

**STATE COMMITTEE ON STATISTICS
REPUBLIC OF TAJIKISTAN**

INFORMATION BULLETIN

**FOOD SECURITY AND POVERTY
IF THE REPUBLIC OF TAJIKISTAN**

№ 4 / 2006

Dushanbe - 2007

Statistical service is one of the effective methods for establishing the order and evaluation of prospects of economic agents activity. Under the conditions of market economy, it is not possible to insure the sustainable development without proper accounting, work analysis and resource planning.

In this respect, and in accordance with legislation, all enterprises, organizations, institutions, and all production and non-production subjects, independently of their form of ownership, have to submit all required complete and accurate reports in due time to the statistical bodies. Thereby, statistical recording is to be indispensable, complete and unexceptional on the whole territory of the republic.

Relevant state authorities have to take required actions to bring accounting system into the line with international standards.

E.SH.RAHMONOV

Introduction

In accordance with European Commission Matrix on Policy Reform of Memorandum of Understanding on Food Security Program in the Republic of Tajikistan the decision about preparation and publishing of Quarterly Food Security Bulletin was made to ensure system of reliable operative information and analysis of current food security situation in the Republic of Tajikistan.

“Food security presumes that all people have access, at all time, to sufficient food required for an active and healthy life. Food security also means physical availability of food in sufficient quantities, accessibility of those foodstuffs for households (through the market and other sources, that suppose sufficient purchasing power), as well as consumption of food in quantities required for satisfying of nutritional needs”.

The purpose of the Bulletin is to bring together and systematize available information on food security in Tajikistan; i.e. the availability of food in the republic and outlook for food production, indicators on access to food, food use and utilization. The Bulletin also contains analysis of current food security situation in the Republic.

The base indicators for Food Security Bulletin are production of food, food availability and accessibility, areas under crops, agricultural production and productivity, main climatic conditions, health indicators, water supply, prices, and quantitative indicators reflecting situation on food market.

The Appendices to the Bulletin show indicators of Poverty Reduction Strategy Paper, information on nutritional status of various socio-economic groups of the population, as well as estimated data on food balance.

The presented Quarterly Food Security Information Bulletin of Tajikistan was prepared by State Committee on Statistics with participation of key Ministries and Departments (Ministry of Finance, Ministry of Health Care, Ministry of Labor and Social Protection of Population, Ministry of Education, Ministry of Transport and Communication, Hydrometeorological Agency under the Committee for Nature and Forestry Protection of the Republic of Tajikistan, etc.). The publication is prepared with technical and financial support of European Commission in the Republic of Tajikistan.

The publication is intended both for specialists and all interested persons.

All recommendations, suggestions and remarks related to the content of the Bulletin should be addressed to the State Committee on Statistics of the Republic of Tajikistan at the following address:

17 Bokhtar Street Dushanbe
734025 Tajikistan
Tel. (992 372) 212387, Fax (992 372) 214375
email: stat@tojikiston.com
<http://www.stat.tj>

CONTENTS

Introduction	125
Overview	128
CHAPTER I. SOCIO-ECONOMIC INDICATORS	131
1.1. Gross Domestic Product.....	131
1.2. Price and Tariff Indices	132
1.3. Foreign trade	133
1.4. Labor market	133
CHAPTER II. AVAILABILITY OF FOOD	134
2.1. Growth in agricultural production.....	135
2.1.1 Outlook of agricultural production	135
2.1.2. Livestock production	138
2.2. Producer prices	140
2.3. Trade in basic foodstuffs.....	142
2.4. Availability of food per capita	143
CHAPTER III. ACCESS TO FOOD.....	144
3.1. Consumer prices.....	144
3.2. Incomes and Expenditures	146
3.2.1. Incomes.....	146
3.2.2. Expenditures	147
3.3. Poverty in the Republic of Tajikistan	147
3.4. Food insecurity: households with spend more than 50% of expenditures on food.....	148
CHAPTER IV. USE AND UTILIZATION	149
4.1. Consumption of food products by the population.....	149
4.2. Food security indicators not related to income	151
4.2.1. Population morbidity.....	151
METHODOLOGY	153
Glossary	155
List of abbreviations	155

Appendix 1. Review of hydro-meteorological conditions of the Republic of Tajikistan	156
Meteorological conditions	156
Hydrological conditions.....	157
Review of snow slides and mudflows.....	158
Appendix 2 PRSP Indicators in the Republic of Tajikistan.	159
Appendix 3. Changes in average wholesale prices in Tajikistan	162
Appendix 4. Changes in average consumer prices in Tajikistan.....	163
Appendix 5. Food balance	165
Appendix 6. Money incomes, expenditures and consumption of households, by decile population groups in the Republic of Tajikistan	171
Appendix 7. Distribution of households and population in them by per capita income in the Republic of Tajikistan.....	172
Appendix 8. Structure of average monthly expenditures of population in the Republic of Tajikistan	173
Appendix 9. Per capita consumption of food in the Republic of Tajikistan	177

OVERVIEW

According to preliminary estimates, Gross Domestic Product for 2006 increased by 7% as compared to 2005. The biggest impact was due to increase of production in industry, trade, agriculture, and services.

As compared to 2005, production of grain decreased by 2.4%. Production of potatoes increased by 3.4%, vegetables - by 5.7%, melons - by 28.1%, fruits - by 40.8%, and grapes - by 18.7%. In 2006, farms of all categories produced 111.7 thsd. tons of meat or 104.4% as compared to 2005, 544.9 thsd.tons of milk (102.2%), and 104.7 mln.eggs (106.1%).

Imports of food products in 2006 increased by 15% as compared to the previous year. The major food products imported to the Republic of Tajikistan were wheat and flour (the greatest share), as well as sugar, vegetable oil, fruits, flour products (macaroni, noodles, bread, cakes, pastries), eggs, tea and others.

Monthly inflation rate in consumer's sector made up 1.04% (against 0.6% in the corresponding period of the previous year).

During 2006, the highest increase in prices was registered for onion (87.4%), carrot (62.7 times), potatoes (57%), sand sugar (39%), beef (32.2%), mutton (31%), eggs (27%), cotton oil (19.6%), milk (16.9%), rice (16.7%), pea (14.4%), semi-smoked sausage (10.5%), poultry meat (10.1%), condensed milk (9.8%), live fish (9.3%), cabbage (8.6%), semolina (8%), cooked sausage (7.8%), buckwheat (6.8%), chocolate sweets (5.4%), animal oil (3.9%), light wheat flour (3.3%), margarine (3.2%), and pasta (0.1%).

Real increase of wages and salaries (deflated by the CPI) in December 2006 made up 23.7% as compared to November 2006, and 34.7% as compared to December 2005. Average monthly salary in real sector in December 2006 was 152.45 somoni, increasing by 37.2% as compared to December 2005. In December 2006, the lowest wages and salaries in real sector were observed in agriculture and forestry, amounting to 62.59 somoni and 71.01 somoni, respectively.

As of the end of December 2006, total arrears in salary payments for the republic amounted to 23.9 mln.somoni.

The cost of *consumer's basket*, at actual consumption (according to household survey 2004) amounted to 48.40 somoni per one household member in prices of end of

December 2006, while the cost of food basket according to rational nutritional standard would amount to 106.92 somoni.

In total structure of household's expenditures for food, bread and bread products occupies the first place (34.8%). In January - September 2006, in all regions of Tajikistan consumption of bread and bread products exceeded approved medical norm by 15%, and the average daily calorie intake decreased to 2079.45 Kcal per capita.

Pensioners spend for food 69% of total consumer expenditures.

In January - December 2006, 20.1 thsd.persons were on leave on initiative of administration, of them 17.7 thsd.persons (88.1%) were on leave without pay. 2.5 thsd.persons were working during incomplete working week / working day. Unemployment rate, including hidden unemployment, amounted to 3.4% of economically active population.

From the beginning of 2006, 55.7 thsd.persons applied to employment offices for a job (which is less by 4.5% than in 2005), of them, 44.9% (25.0 thsd.persons) were young people aged 15-29. All applied persons were unemployed.

In 2006 incidence of infection diseases among population decreased by 11.6% as compared to the previous year, and was estimated at 1295.9 cases per 100 thsd. persons.

In 2006, increase in number of cases of parasitic diseases by 16.5% was observed, of which 42.7% were lamblia cases, 26.5% - geminolepidosis cases, 16.2% - enterobiasis, and 13.6% ascariasis cases. Among population diseased with parasitic infections, children of 0-14 years old accounted for 72.1%.

CHAPTER 1. SOCIO-ECONOMIC INDICATORS

The mentioned below socio-economic indicators depict overall economic situation in the country, required for analysis of food security situation.

1.1 GROSS DOMESTIC PRODUCT

According to preliminary estimates, Gross Domestic Product (GDP) for 2006 was valued at 9272.2 mln.somoni, and increased by 7% as compared to 2005 (in constant prices).

The biggest impact was due to increase of production in industry, trade, agriculture, and services.

Table 1: Main socio-economic indicators

	<i>2004</i>	<i>2005</i>	<i>2006¹</i>
Population, as of the end of period (million)	6,8	6,9	7,1
Nominal GDP (mln.somoni)	6167,2	7206,6	9272,2
of which (in %):			
agriculture	22,0	21,4	18,4
industry	20,5	18,5	21,5
services	41,8	43,8	43,6
GDP per capita (somoni)	910,0	1051,2	1319,3
GDP growth , in % to the corresponding period of the previous year	10,6	6,7	7,0
State budget deficit / surplus (as percentage of GDP)	-0,2	-1,5	0,4
Consumer Price Indices, in % to the corresponding period of the previous year	106,8	107,8	111,9
Price Indices for foodstuffs	105,0	108,9	113,6
Price indices for services	117,3	109,8	118,6
Exchange rate of somoni (per 1 US Dollar)	2,9711	3,1175	3,2983
Officially registered unemployment rate	2,0	2,0	2,3
Number of registered unemployed, thsd.persons	38,8	43,6	47,7
in % to the corresponding period of the previous year	90,4	112,4	112,2
Monthly average wages and salaries (somoni)	61,81	83,58	116,81

	2004	2005	2006 ¹
in % to the corresponding period of the previous year	138,6	135,2	135,8
Trade balance (mln.USD)	-276,4	-421,3	-323,6
Share of food in total imports, %	9,6	11,7	11,3
Share of food in total exports, %	3,2	3,3	2,7

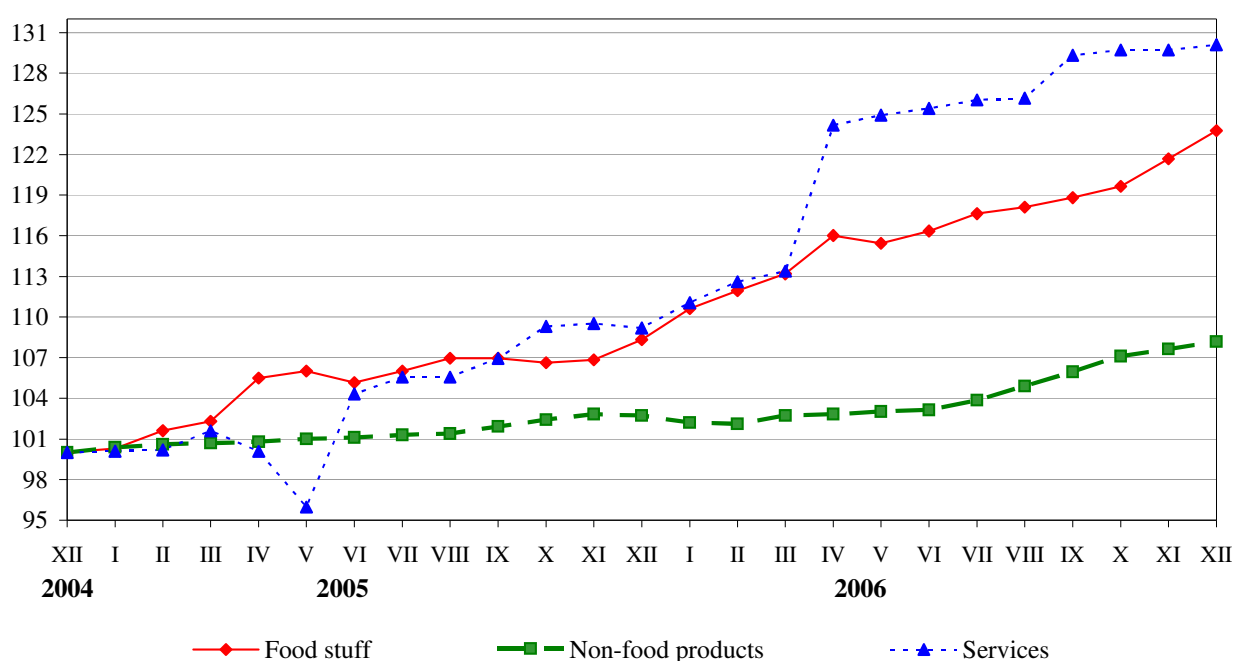
Source: State Committee on Statistics

¹ – preliminary data

1.2 Price and Tariff Indices

In 2006, consumer price index constituted 112.5%, of which for foodstuff - 113.9%, non-food products - 105.3%, and paid services to population - 119.3%. Monthly inflation rate in consumer's sector made up 1.04% (against 0.6% in the corresponding period of the previous year).

Graph 1: Consumer price indices for foodstuff, non-food products and paid services (at the end of each month, in % to December 2003)



During 2006, the increase of prices of foods outpaced those of non-foods. More detailed information on prices of food is available in the section 3 “Access to food”.

1.3 Foreign trade

In January-December 2006, foreign trade turnover of the Republic of Tajikistan including electric power and natural gas was valued at 3121.6 million USD, which is higher by 882.8 mln.USD (or 39.4%) than in January-December 2005. The gap between exports and imports determined the deficit of trade balance valued at 323.6 million USD.

In January-December 2006, volume of exports amounted to 1399.0 mln.USD, which is higher by 54.0% or 490.3 mln.USD than in the similar period of 2005. Volume of imports amounted to 1722.6 mln.USD, which is higher by 29.5% or 392.5 mln.USD than in January-December 2005.

Major plant products in exports were fruits (21324 thsd.USD) and vegetables (6447 thsd.USD), while in imports it were wheat (28025 thsd.USD) and flour (48953 thsd.USD).

1.4 Labor market

According to preliminary estimates, the number of economically active population (employed and officially registered unemployed) in December 2006 was 2062.1 thsd.persons, of them 2015.6 thsd.persons (97.7%) were occupied in the economy, and 45.6 thsd.persons (2.3% of economically active population) had official status of unemployed. In January - December 2006, average annual number of economically active population was 2037.2 thsd.persons, employed population - 1989.5 thsd.persons, and registered unemployment rate - 2.3%.

In December 2006, 3.7 thsd.persons applied to employment offices for a job (which is less by 26% than in the corresponding period of 2005), 2.3 thsd.persons (62.6% of total number of unemployed applied) were placed in a job, and this number decreased by 8.6% as compared to the corresponding period of the previous year.

From the beginning of 2006, 55.7 thsd.persons applied to employment offices for a job (which is less by 4.5% than in 2005), of them, 44.9% (25.0 thsd.persons) were young people aged 15-29. All applied persons were unemployed. 47.0% (26.2 thsd.persons) of them are persons who were looking for a job for the first time, and 40.0% (22.3 thsd.persons) did not have a profession / qualification.

As of the end of December 2006, the number of vacancies, offered by enterprises through employment offices increased by 3.5% as compared to the similar period of 2005, and amounted to 16.3 thsd places. At the same time, the number of vacancies for blue-collar job decreased by 7.6% and amounted to 6.3 thsd.

In January-December 2006, number of professional trainings for registered unemployed through employment offices increased as compared to the corresponding period of 2005.

In January-December 2006, 7.2 thsd. registered unemployed were offered professional training by employment offices (which is higher by 9.4% than at the corresponding period of the previous year). 6.9 thsd. persons have completed the training courses.

Besides, 20.5 thsd. persons were sent to public paid works (of which 12.5 thsd. persons were registered as unemployed), which is less by 15.4% than at the corresponding period of 2005.

Hidden unemployment means underemployment, when a part of workers are on forced leave or work during incomplete working week / working day due to downtime. In January - December 2006, 20.1 thsd. persons were on leave on initiative of administration, of them 17.7 thsd. persons (88.1%) were on leave without pay. 2.5 thsd. persons were working during incomplete working week / working day. Unemployment rate, including hidden unemployment, amounted to 3.4% of economically active population.

Real increase of wages and salaries (deflated by the CPI) in December 2006 made up 23.7% as compared to November 2006, and 34.7% as compared to December 2005.

In December 2006, the lowest wages and salaries in real sector were observed in agriculture and forestry, amounting to 62.59 somoni and 71.01 somoni, respectively. The highest wages and salaries were in communication (578.83 somoni), construction (433.95 somoni), transport (299.36 somoni), and industry (264.53 somoni). Average monthly salary in real sector in December 2006 was 152.45 somoni, increasing by 37.2% as compared to December 2005.

In non-production sphere, the highest salary remains in the area of finance and crediting (879.59 somoni in December 2006). Average monthly salary in non-production sphere in December 2006 was 148.63 somoni, increasing by 56.1% as compared to December 2005.

As of the end of December 2006, total arrears in salary payments for the republic amounted to 23891.5 thsd. somoni, of which arrears for December 2006 accounted for 13.2% (3145.2 thsd. somoni).

CHAPTER II. AVAILABILITY OF FOOD

Availability refers to the physical presence of food as a result of domestic production or market operations. On country level availability of food is determined by combination of food stocks, commercial imports, food aid and domestic production. The availability is also determined by the following elements: weather conditions, crop yield, livestock and productivity, producer prices for food, food prices in neighboring countries, as well as national policy defining production, trade, distribution and pricing.

2.1. Growth in agricultural production

The value of gross agricultural output in 2006 in all categories of farms increased by 5.4% as compared to 2005 and amounted to 3659.3 mln.somoni (at current prices), of which: plant products - 2758.9 mln.somoni (increased by 5.9%), and animal products - 900.4 mln.somoni (increased by 3.9%).

The value of gross agricultural output in all categories of farms in Khatlon Oblast amounted to 1346.4 mln.somoni (increased by 5.8%), Soghd Oblast - 1334.2 mln.somoni (by 6.5%), GBAO - 132.5 mln.somoni (by 3.7%), and regions of the republican subordination - 846.2 mln.somoni (by 3.2%).

2.1.1. Outlook for agricultural production

Climate influence on crop production

The **October** was characterized by warm and relatively dry weather. Mean air temperature on the most part of the republic exceeded the norm by 1-5°C: 16-21°C in valleys, 14-16°C foothills, 7-13°C in mountains, and 1-5°C in high altitudes.

Rainfalls were observed mainly in the second half of the month. Total amount of precipitation during the month was below the norm, and only in some mountain regions it exceeded the norm. In October, gradual decrease in water content on the most rivers of the republic was registered. Monthly water discharge of the most rivers was near or above the norm (80-120%), and above the last years values (85-130%).

In **November**, mean air temperature on the most part of the republic was above the norm by 1-3°C, and only in eastern regions of GBAO it was below the norm by 0-2°C: 8-13°C in valleys, 0-5°C in mountains, and 3-8°C below zero in high altitudes (reaching 11°C below zero in some regions).

Total amount of precipitation all over the republic was above the norm: 110-220% of the monthly norm in valleys, 110-240% in mountains, and 170-350% in high altitudes. Gradual decrease in water content in the most rivers of the republic was also registered in the November. Monthly water discharge of the most rivers was near or above the norm (83-120%), except for Obihingou - Tavildara and Vakhsh - Darband rivers, where monthly water discharge exceeded the average annual values by 40%.

December was characterized by relatively cold weather. The mean monthly air temperature in the most of regions was below the norm by 1-5°C: 0-3°C in valleys, 1-7°C below zero in mountains, and 18-25 °C below zero in eastern parts of GBAO.

The amount of precipitation on the most territory of the republic was above the norm. The heaviest snowfalls were registered in valleys on 1,5,5, and 25 December. During these days, fogs were observed in valleys. December was also characterized by gradual decrease in water content in the most rivers of the republic. Monthly water discharge of the most rivers was near the norm (80-120%), and within the last years values (80-120%).

Table 2: Water reservoirs as of 31 December 2006

<i>Water reservoirs</i>	<i>Changes during the month, mln. cubic meters</i>	<i>Volume of water in 2005</i>		<i>Volume of water in 2006</i>	
		<i>mln. cubic meters</i>	<i>in % to total capacity</i>	<i>mln. cubic meters</i>	<i>in % to total capacity</i>
Kayrakkum	+1,258	3154	75,8	3110	74,7
Nurek	-0,965	8316	79,1	8107	77,2

Table 3: Sown area and gross harvest

	<i>2004</i>	<i>2005</i>	<i>2006</i>
Sown area (thsd.ha)	905,6	901,1	900,2
Winter crops	163,7	181,2	214,9
of which cereal crops	163,7	181,2	214,9
of which:			
wheat	152,1	167,6	199,3
barley	11,4	13,4	15,5
Spring crops	741,9	719,9	685,2
of which cereal crops	240,1	214,3	176,9
of which:			
wheat	170,7	150,1	121,4
barley	37,5	31,3	31,8
Industrial crops	333,1	325,4	293,9
Potatoes	28,6	27,5	27,9
Vegetables	32,0	33,4	35,8
Melons	10,6	9,2	9,1
Gross harvest, thsd.tons			
Grain (weight after processing)	891,6	934,9	912,3

	2004	2005	2006
Barley (weight after processing)	63,4	64,5	61,7
Maize for grain	113,0	155,8	138,9
Potatoes	527,2	555,1	573,7
Vegetables	681,5	718,5	759,7
Melons	150,4	170,2	218,1
Crop yield, centners / ha¹			
Cereal crops	19,8	19,5	17,3
wheat	19,9	19,6	17,8
barley	14,6	15,1	13,2
maize for grain	46,8	40,5	37,7
Potatoes	183,0	196,2	198,5
Vegetables	186,0	186,8	186,9
Melons	136,0	145,7	185,7

The share of areas under cereals and leguminous cultures accounted for 43.5% of all sown areas, under technical cultures - 32.7%, of which under cotton - 29.2%, under feed crops - 14.5%, under potatoes, vegetables and melons - 8.1%.

As compared to 2005, production of grain decreased by 22.6 thsd.tons (or 2.4%). Production of potatoes increased by 18.6 thsd.tons (3.4%), vegetables - by 41.2 thsd.tons (5.7%), melons - by 47.9 thsd.tons (28.1%), fruits - by 60.5 thsd.tons (40.8%), and grapes - by 16.9 thsd.tons (18.7%).

As of 1 January 2007, agricultural enterprises and dehkan farms have harvested grain and legumes (excluding maize) from the area of 256.4 thsd.ha. which is more by 1.2 thsd.ha than at the same date of the previous year. From the harvested area 433.1 thsd.tons of grain were threshed (from the area of 253.6 thsd.ha) with total yield of 17.3 centners from one hectare.

Maize for grain was harvested from the area of 21.1 thsd. ha (more by 6% as compared to the corresponding period of the previous year). 17.2 thsd.tons of maize for grain were harvested with average yield of 30.7 centners from one hectare.

173.9 thsd.tons of potatoes were harvested from the area of 9.4 thsd. ha (which is more by 10.8 thsd.tons as compared to the similar period of the previous year). Yield of potatoes was 184 centners from one hectare. 189.0 thsd.tons of vegetables were harvested from the area of 12.5 thsd.ha, with average yield of 175 centners/ha. 93.1 thsd.tons of

melons were harvested with average yield of 151 centners/ha. During the reporting period fruits and grapes harvest made up 73.9 thsd tons and 54.3 thsd.tons, respectively, increasing by 80% and 56% as compared to the corresponding period of the previous year.

Winter cereal crops were planted by agricultural enterprises and dehkan farms on the area of 119.9 thsd.ha (85% of planned area) or 81% as compared to 2005.

Fall-ploughing was carried out on the area of 114.4 thsd.ha (89% of the level of 2005).

As of 1 January 2007, winter agricultural crops were planted by agricultural enterprises and dehkan farms on the area of 5.2 thsd.ha, which is more by 1.3 thsd.ha (or 32%) as compared to the similar date of last year; of them 2.2 thsd.ha were sown to vegetables and 1.5 thsd.ha were sown to perennial naked grasses.

As of 1 January 2007, agricultural enterprises and dehkan farms sowed 23.2 thsd.tons of seeds of cereal crop and leguminous, including 20.5 thsd.tons of wheat seeds, 0.7 thsd.tons of maize seeds, and 12.0 thsd.tons of seeds of other cereal crops. Besides, 23 tons of seeds of cereal crop and leguminous were put to seed bank.

2.1.2. Livestock production

As of 1 January 2007, number of cattle in farms of all categories increased by 4.5% as compared to the similar date of the previous year; the number of sheep and goats increased by 5.3%, poultry – by 7.2%. The increase in number of cattle was observed in farms of Khatlon oblast (by 5.7%), GBAO (by 1.1%), Soghd oblast (by 3.7%), and RRS (by 4.4%) . Number of poultry increased in farms of Khatlon oblast (by 13.4%), Soghd oblast (by 1.8%), GBAO (by 13%), and RRS (by 4.2%).

In 2006, farms of all categories produced 111.7 thsd. tons of meat or 104.4% as compared to 2005, 544.9 thsd.tons of milk (102.2%), and 104.7 mln.eggs (106.1%).

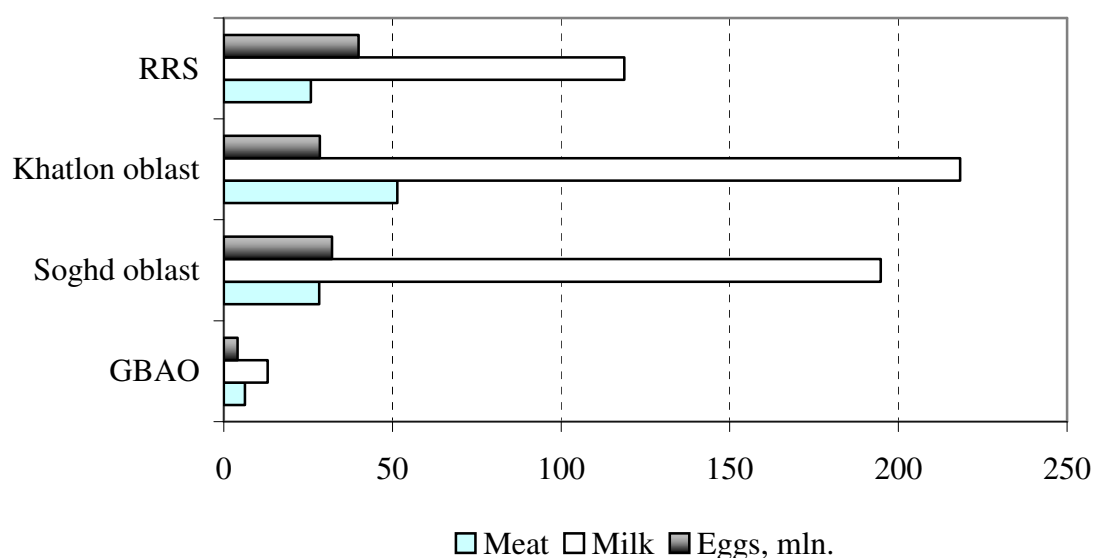
The average milk yield per cow in 2006 was 1502 kg decreasing by 92 kg as compared to the previous year. During the reporting period, in average 57 calves were received from every 100 female cows. The average output of eggs from 1 laying hen was 122 eggs. Laying ability in farms of Soghd oblast increased by 18 pieces as compared to 2005, while in Rudaki district it increased by 50 pieces.

Table 4: Main indicators of livestock production in the Republic of Tajikistan

	2004	2005	2006
Production, thsd.tons			
Meat (slaughtered)	48,2	53,7	55,9
of which:			
Beef and veal	21,8	24,3	25,3
Mutton and goats meat	23,8	26,5	27,6
Poultry	0,5	0,6	0,6
Other meat	2,1	2,3	2,4
Milk	489,5	533,0	544,9
Eggs, mln.	77,7	98,7	104,7
Productivity			
The average milk yield per cow, kg	573	1597	1502
The average output of eggs per laying hen, pieces	261	123	122

Source: data of State Committee on Statistics

Graph 2. Production of main live-stock products in all categories of farms in 2006, thsd. tons



2.2. Producer prices

Table 5: Changes in producer prices

(*somoni / kg*)

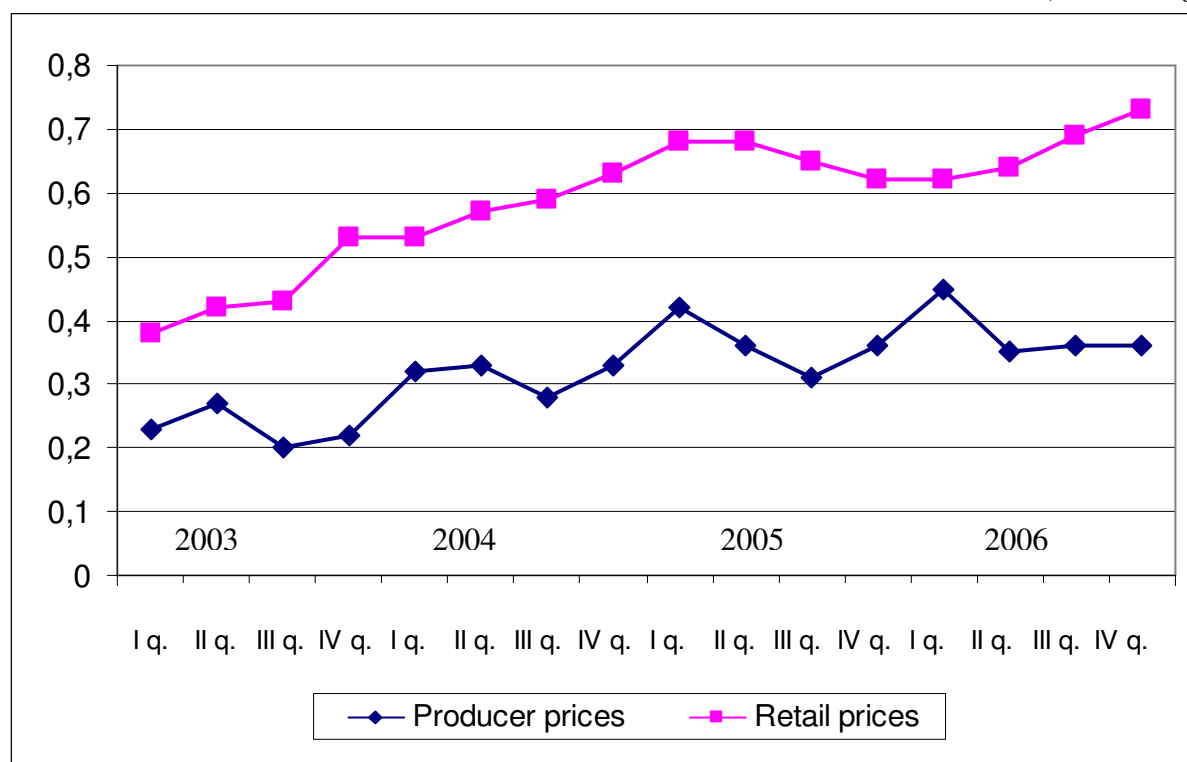
	2005				2006			
	<i>I q.</i>	<i>II q.</i>	<i>III q.</i>	<i>IV q.</i>	<i>I q.</i>	<i>II q.</i>	<i>III q.</i>	<i>IV q.</i>
Wheat	0,42	0,36	0,31	0,36	0,45	0,35	0,36	0,36
Milk	0,42	0,41	0,41	0,41	0,51	0,52	0,51	0,54
Potatoes	0,19	0,19	0,29	0,36	0,28	0,35	0,44	0,36

Source: State Committee on Statistics

In 2006, the imports of wheat decreased by 2% as compared to 2005.

Graph 3. Trends in producer and retail prices of wheat

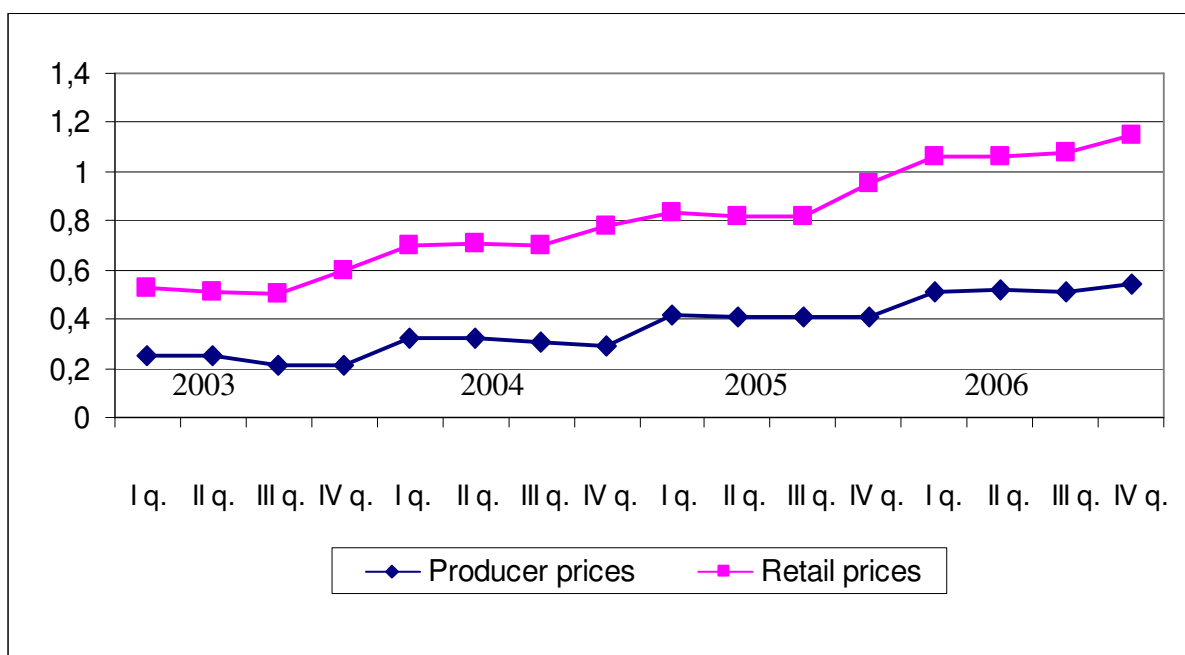
(*somoni/kg*)



In 2005 and 2006 the average price of milk was subject to seasonal fluctuations, and prices mainly increase in fourth quarter of each year.

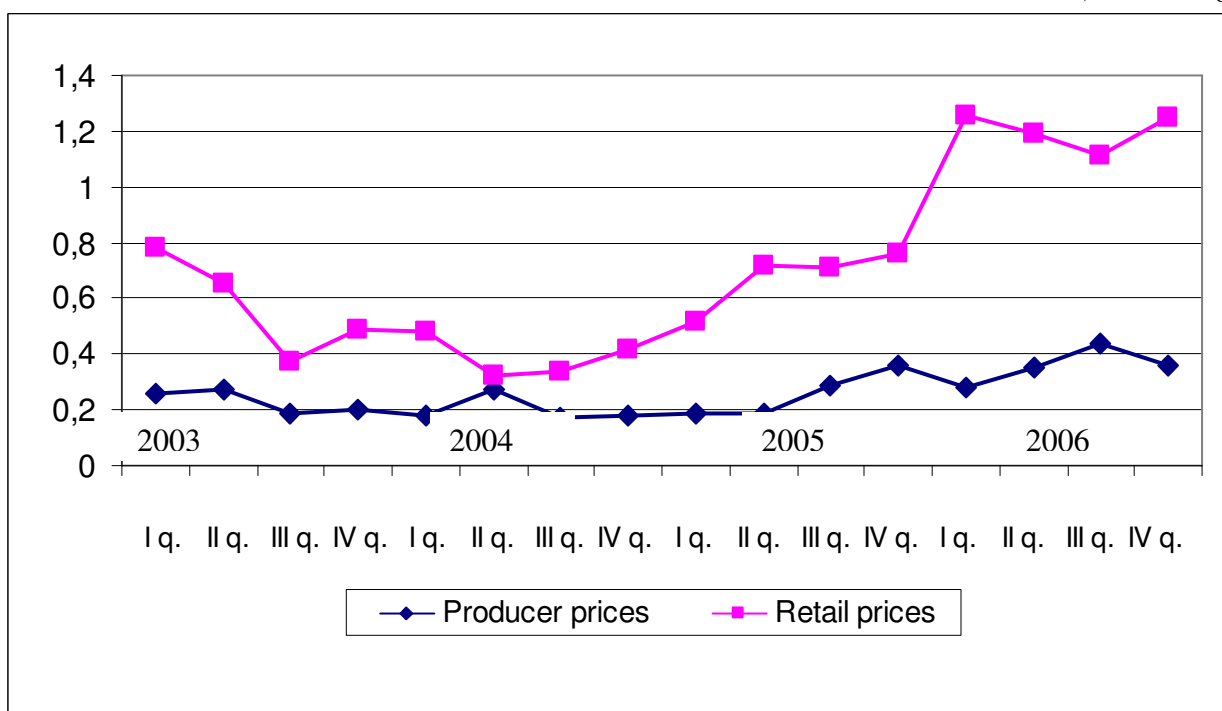
Graph 4. Trends in producer and retail prices of milk

(somon/kg)



Graph 5. Trends in producer and retail prices of potatoes

(somon/kg)



The given graphs show that change in retail prices is higher than in producer's ones. This trend is specific for all types of agricultural products.

Retail prices of potato in the fourth quarter remained at the level of the first quarter of 2006, when both retail and wholesale prices of potato increased by 47 and 2.4 times, respectively, as compared to the first quarter of 2005, and amounted to 1.26 and 1.25

somoni per kg, respectively. In the second and third quarters of 2006, some decrease in prices of potato was observed.

2.3. Trade in basic foodstuffs

Share of food products in the total value of exports of Tajikistan accounted for 3.3% and 2.7% in 2005 and 2006, respectively. The share of food products in total volume of imports was well higher and accounted for 11.7% and 11.3%, respectively.

The major food products imported to the Republic of Tajikistan were wheat and flour (the greatest share), as well as sugar, vegetable oil, fruits, flour products (macaroni, noodles, bread, cakes, pastries), eggs, tea and others.

Imports of food products in 2006 increased by 15% as compared to the previous year. Imports of milk and dairy products increased by 47%, spaghetti, noodles and other - by 36%. Imports of wheat increased by 7% amounting to 376.8 thsd.tons (against 351.3 thsd.tons in 2005), and imports of flour decreased by 2% amounting to 277.3 thsd.tons (against 283.5 thsd.tons in 2005).

Table 6: Exports and Imports of basic food products

	<i>(thsd.tons)</i>			
	2005	2006	2005	2006
	<i>Exports</i>		<i>Imports</i>	
<i>Food products</i>	130	146	880	1011
of which				
wheat	-	-	283,5	277,3
flour	0,2	0,0	351,3	376,8
sugar	3,8	-	101,9	140,9
spaghetti, noodles, elbow and other products	-	-	7,3	9,9
vegetable oil	0,0	0,0	44,7	50,9
milk and dairy products	0,0	0,0	1,9	2,8
eggs	-	-	4,9	10,0
tea	0,1	0,0	6,0	6,0
vegetables	36,5	38,6	0,2	0,5
fruits and berries	13,4	20,7	5,7	9,8
fruit and vegetable juices	16,4	12,9	1,4	2,1
canned vegetables, tomatoes	3,4	3,9	0,6	1,2
dry fruits	54,3	63,0	-	0,0
Share of food products in total volume, %	3,3	2,7	11,7	11,3

2.4. Availability of food per capita

The availability of food per capita is calculated using a food balance. A food balance shows for each basic food commodity, the total physical availability and utilization of that foodstuff over a given period of time, usually 1 year. **Total physical availability** is the sum of stocks at the beginning of the period, production and imports of that commodity in a given period of time. **Total utilization** covers use for human consumption + use as animal seed + seed + losses + exports + stocks at the end of the period. In any one period, the availability and utilization of the same commodity must balance. Drawn up over a succession of years, food balances usually reveal a trend in total availability, imports, exports, and the availability of food for human consumption and for feed use. Dividing the annual amount of food available for human consumption by the population gives a key indicator of availability: the average availability of food per capita per year. This measure of food availability is a national average, which takes no account of households' access (i.e. ability to produce, purchase or otherwise obtain) to food.

Table 7: Consumption of foodstuff per capita

(kg / month)

	January - September 2005	January - September 2006
Bread products (expressed in grain)	12,4	12,5
Potatoes	2,7	2,4
Vegetables and melons	10,7	10,8
Fruits and berries	3,3	3,5
Sugar and confectionery items	0,8	0,9
Meat and meat products	0,6	0,6
Milk and dairy products	4,4	4,9
Eggs (pieces)	2	2
Vegetable oil	1,0	1,0

Source: Household budget survey

The analysis of food balances shows that food availability remains stable during last years.

More detailed information is available in Appendix 5 “Food balance”.

CHAPTER III. ACCESS TO FOOD

Access to food refers to the ability of households to obtain adequate safe and appropriate foods to meet their needs for a healthy and active life. Access can be through production for own consumption, market purchases or donations / transfers.

3.1. Consumer's prices

During 2006 retail prices of most basic foodstuffs increased significantly as compared to December 2005, except of prices for bread and apples (See Table 8, Appendix 4).

**Table 8: Average prices for some food products in consumer's sector
(average for republic)**

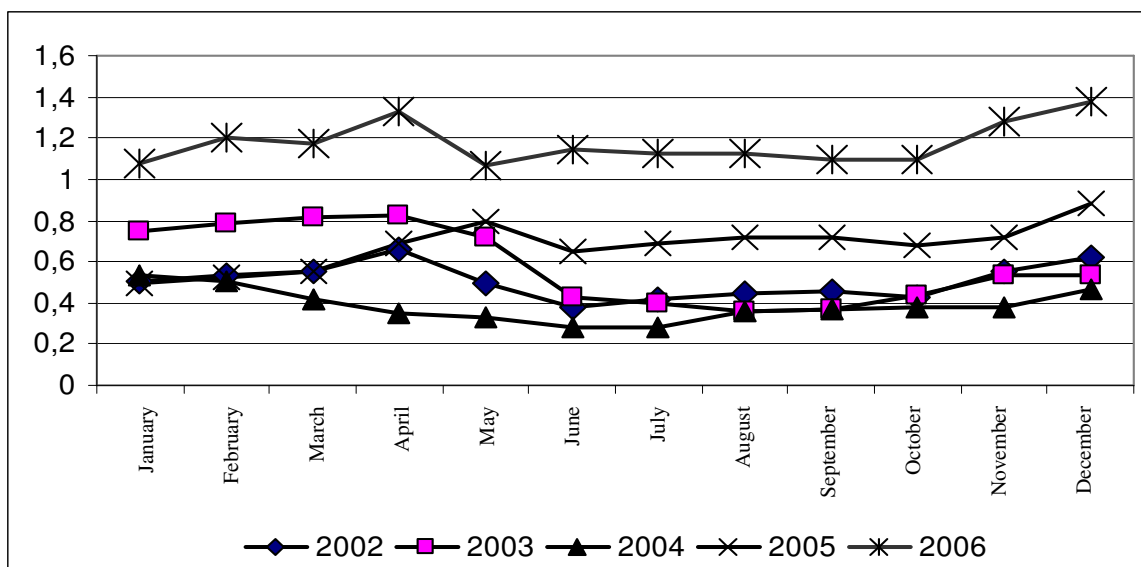
	2006							2005
	January	March	June	September	October	November	December	December
Beef	7,51	7,54	7,81	8,94	9,39	9,77	9,93	7,51
Animal oil	11,35	11,35	11,42	11,69	11,70	11,70	11,82	11,39
Cotton oil	2,66	2,59	2,58	2,79	3,08	3,18	3,22	2,69
Milk	0,98	1,03	0,99	1,05	1,08	1,10	1,12	0,96
Eggs (10 pieces)	3,09	2,49	2,71	3,10	3,29	3,49	4,28	3,37
Sand sugar	1,90	2,46	2,51	2,50	2,46	2,46	2,46	1,75
Salt	0,35	0,35	0,35	0,35	0,35	0,35	0,35	0,35
Light wheat flour	0,98	0,95	0,94	0,95	0,97	0,98	1,03	0,98
Bread made from light wheat flour	1,00	1,00	1,00	1,00	1,00	1,00	1,00	1,00
Rice	2,30	2,38	2,73	2,88	2,78	2,69	2,75	2,30
Potatoes	1,08	1,17	1,14	1,10	1,10	1,28	1,38	0,88
Onion	0,54	0,67	0,50	0,62	0,62	0,78	0,87	0,46
Carrot	0,27	0,28	0,98	0,83	0,62	0,43	0,43	0,22
Apples	1,68	2,04	1,64	1,34	1,34	1,44	1,44	1,62
Vodka	5,57	5,82	5,88	5,86	6,03	6,03	6,03	5,57

During 2006, the highest increase in prices was registered for onion (87.4%), carrot (62.7 times), potatoes (57%), sand sugar (39%), beef (32.2%), mutton (31%), eggs (27%), cotton oil (19.6%), milk (16.9%), rice (16.7%), pea (14.4%), semi-smoked sausage (10.5%), poultry meat (10.1%), condensed milk (9.8%), live fish (9.3%), cabbage (8.6%),

semolina (8%), cooked sausage (7.8%), buckwheat (6.8%), chocolate sweets (5.4%), animal oil (3.9%), light wheat flour (3.3%), margarine (3.2%), and pasta (0.1%).

At the same time, the highest decrease in prices was registered for apples (21%), evaporated milk formula (6.1%), and pearl barley (1.4%).

Graphs 6: Average monthly retail prices for potatoes (somon / kg)



Potatoes. Retail prices of potatoes are subject to seasonal fluctuations and also to fluctuations in supply and demand. The highest seasonal price is normally recorded in the second quarter of each year, prior to the first new harvest. However, during 2005 and the first quarter of 2006, the prices of potatoes were increasing continuously. In the second quarter of the current year, the prices of potatoes slightly decreased and amounted to 1.14 somoni per kg as of the end of June. The same trend was observed in the third quarter of 2006: prices of potatoes slightly decreased and amounted to 1.10 somoni per kg in September. In the fourth quarter, the prices increased again and reached 1.25 somoni per kg.

Flour. In 2005 and first half of 2006 the price of flour was subject to slow decrease. From the third quarter, the prices started to increase and amounted to 1.03 somoni per kg in December (as compared to December 2005 the prices increased by 5.1%).

Beef. During 2006, the prices of beef were subject to increase. Thus, in January 2006 the price of beef amounted to 7.51 somoni, and as of the end of 2006 it reached 9.93 somoni per kg. As compared to December 2005 the prices increased by 32.2%.

Cotton oil. During 2006, the price of cotton oil was also subject to increase. Thus, in January 2006, the price of cotton oil was 2.66 somoni per a liter, while by the end of

2006 it reached 3.22 somoni per a liter. As compared to December 2005, the price cotton oil increased by 19.7%.

Onion. Consumer prices of onion in December 2006 increased by 1.9 times as compared to December 2005.

3.2. Incomes and expenditures

The source of information on household incomes and expenditures is the Household Budget Survey which is conducted on the basis of a monthly survey of 925 households and is comprised of the following: demographic information on the composition of the family, housing and infrastructure, volume of consumption in the family including domestically manufactured items, economic activity in both agricultural and non-agricultural sectors.

3.2.1. Incomes

In 2005 cash incomes of population amounted to 44.20 somoni in a month per capita and increased by 21.5% (adjusted for inflation) as compared to 2004. In January - September 2006 as compared to January - September 2005, per capita cash income increased by 21.6% and amounted to 56.68 somoni. (See Table 9).

Table 9: Trends in population incomes and expenditures

	January - September 2005	January - September 2006
Average per capita incomes (somon / month)	42,08	56,68
Growth in real incomes (%)	122,9	121,6
Average monthly salary	84,10	108,31
Growth in real salary (%)	139,6	116,3
Average per capita expenditures (somon / month)	41,99	56,33
Growth in real expenditures (%)	125,1	121,1

Source: Household Budget Survey and current statistical data

The most important sources of cash incomes of households in January - September of 2006 continued to remain labor incomes - 55.5% and receipts from sales of agricultural products - 12.8%. In January - September 2006, the gap between the average incomes of the highest and the lowest income deciles amounted to 8.4 times.

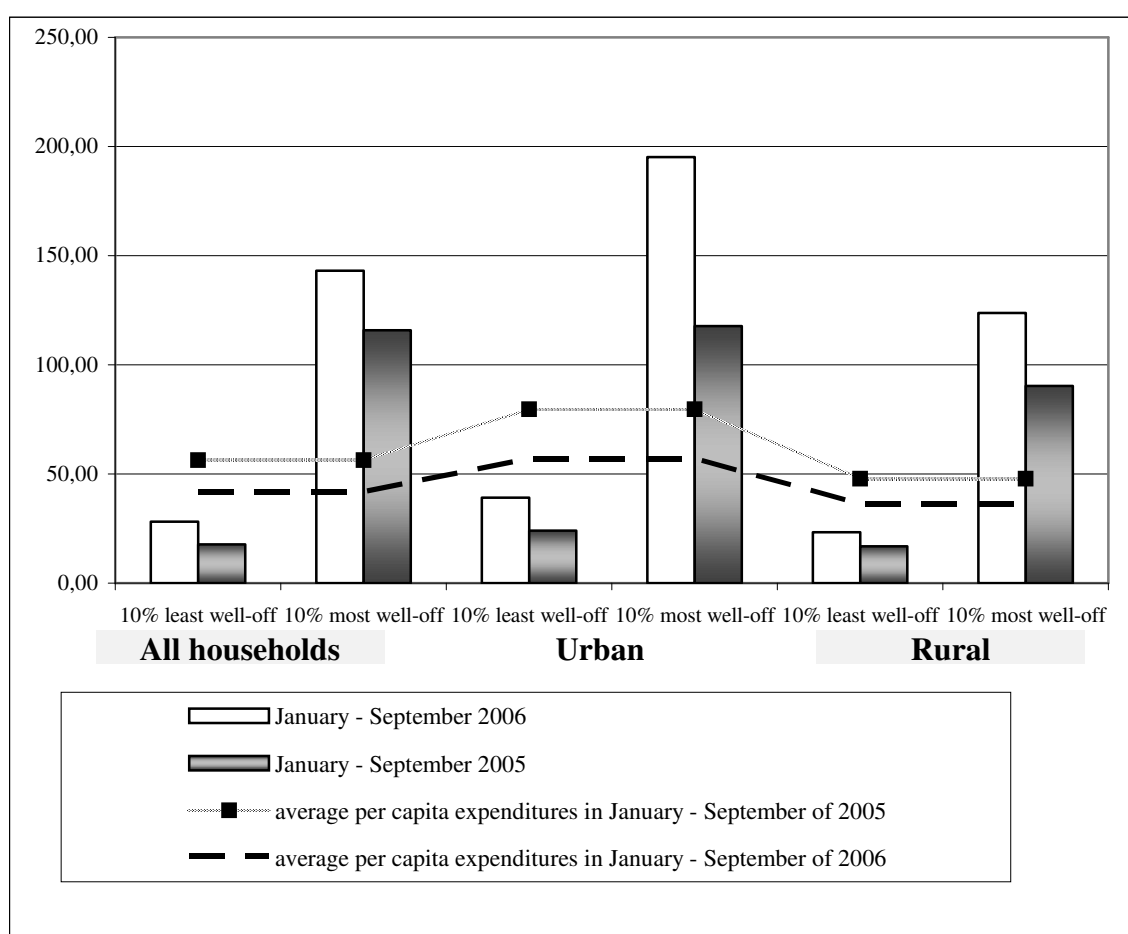
As of the end of December 2006, total arrears in salary payments for the republic made up 23.9 mln.somon.

3.2.2. Expenditures

In 2005 and January - September of 2006, average expenditures of population have risen mainly due to increase in prices (see Appendix 10 and Graph 7).

The gap between expenditures of the highest and the lowest deciles increased from 5.5 times in 2004 to 6.6 times in 2005. However in the first half of 2006, the gap decreased from 6.5 times to 5.1 times.

Graph 7: Growth of per capita expenditures by decile groups in January - September of 2005 and 2006



3.3. Poverty in the Republic of Tajikistan

Poverty and food & nutrition insecurity are closely related and form a vicious circle. Food and nutrition insecurity is defined as “When people lack secure access to sufficient amounts of safe and nutritious food for normal growth and development and an active and healthy life. It may be caused by the unavailability of food, insufficient purchasing power, inappropriate distribution, or inadequate use of food at the household level. Food insecurity, poor conditions of health and sanitation, and inappropriate care and feeding

practice are the major causes of poor nutritional status. Food insecurity may be chronic (persistent), seasonal or transitory.

The poor frequently suffer from any or all of the following characteristics: inadequate money, poor education, and few resources, poor access to employment opportunities, and have little power. They tend to live in poor housing and may have poor access to food, health services, sanitation. Without targeted actions to identify and alleviate poverty, the poor tend to become poorer and possibly more food insecure.

When determining poverty rate many factors that can be grouped into three groups should be considered:

- ◆ Incomes (total family income by sources)
- ◆ Wealth (movable assets and real estate, housing conditions, communal services)
- ◆ Population (access to primary health services and education, occupational activities, employment, unemployment)

Indicators of Poverty Reduction Strategy of the Republic of Tajikistan are given in Appendix 2.

3.4. Food insecurity: households spending more than 50% of expenditures on food

Food insecurity means a situation when people have no regular physical, economic or social access to adequate quantities of qualitative and safe food required for their nutrition, which meets their preferences for an active and healthy life.

The results of the Household Budget Survey show that the share of expenditures for food in the structure of total household's expenditures accounted for less than 70% and decreased by 6.5% as compared to January - September of 2005. The share of expenditures for food in urban area decreased by 9.0%, and in rural area - by 5.4%. At the same time, pensioners spend for food 69% of total consumer expenditures (Table 10).

Table 10: Share of consumer expenditures for food in total structure of household expenditures, in per cent

	January - September 2005	January - September 2006
Republic of Tajikistan	64,2	57,7
Urban	67,5	58,5
Rural	62,6	57,2

	January - September 2005	January - September 2006
Oblasts		
Dushanbe	85,2	55,2
GBAO		
Sogd oblast	56,2	52,3
Khatlon oblast	66,3	66,2
RRS	66,9	57,1
Vulnerable groups of population		
Households having 3 and more children	62,9	58,7
Pensioners	74,3	69,0

More detailed information on expenditures, incomes and deciles is available in Appendix 6.

CHAPTER IV. USE AND UTILIZATION

Use of food refers to the selection, composition, preparation and allocation of food within the family. Utilization of good refers to the ability of the human body to take and use food within the body. Food use covers knowledge of appropriate diets, and proper allocation of food. The ability of the body to utilize food is affected by its state of health and access to clean drinking water, access to basic health services, etc. The ultimate measure of food security is the nutritional status of the population.

4.1. Consumption of food products by the population

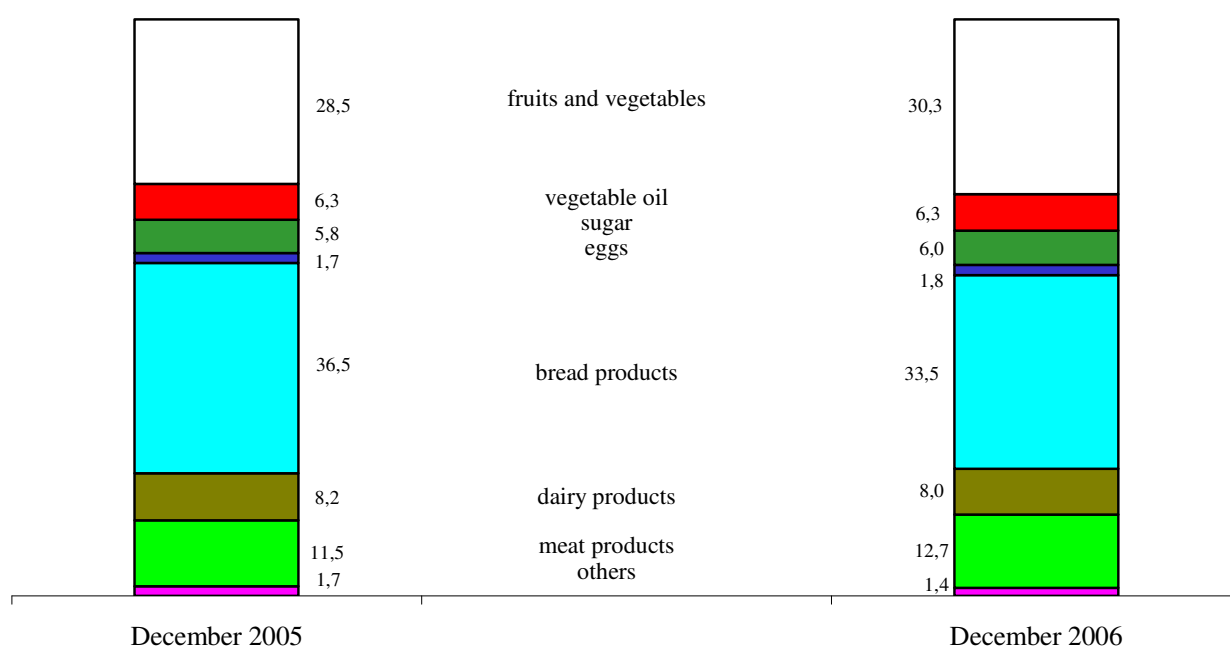
One of the measurements of food and nutritional insecurity is the calculation of daily calorie intake per one household member. The average daily calorie intake in 2005 was 2106.53 Kcal per capita, which is higher the recommendations of the World Health Organization (WHO) (2100 Kcal per a day). In January - September 2006, the average daily calorie intake decreased to 2079.45 Kcal per capita.

In January - September 2006, in all regions of Tajikistan consumption of bread and bread products exceeded approved medical norm by 15% and amounted on average to 112.1 kg per one household member.

In January - September 2006, average consumption of potatoes in Tajikistan amounted to 21.9 kg per capita, vegetables and melons – 97.3 kg, milk and dairy products – 44.4 kg, meat and meat products – 5.3 kg, vegetable oil – 9.1 kg, eggs - 18 pieces, sugar and confectionery – 7.8 kg, and fruits – 31.6 kg. In total structure of household's expenditures for food, bread and bread products occupies the first place (34.8%).

The cost of *consumer's basket*, at actual consumption (according to household survey 2004) amounted to 48.40 somoni per one household member in prices of end of December 2006, while the cost of food basket according to rational nutritional standard would amount to 106.92 somoni.

**Graph 8: Structure of consumer's basket in December 2005-2006
(as of the end of the month, in %, per one household member)**



Appendix 9 shows the detailed information on per capita food consumption in the households of the Republic of Tajikistan.

Table 11: Nutritional values of foods consumed per a day (excluding beer and wine)

	<i>Per one household member per a day</i>	<i>of which:</i>		<i>Per one household member per a day</i>	<i>of which:</i>	
		<i>urban area</i>	<i>rural area</i>		<i>urban area</i>	<i>rural area</i>
	<i>January - September 2005</i>			<i>January - September 2006</i>		
Proteins, gr.	49,38	39,53	53,10	50,48	43,16	53,97
of which animal, gr.	6,19	4,32	6,90	6,69	5,61	7,20
Fats, gr.	43,73	43,08	43,96	45,71	46,35	45,86
of which animal, gr.	6,65	5,56	7,06	7,50	7,93	7,40
Carbohydrate, gr.	357,81	292,49	382,45	362,55	308,93	388,06
Caloric value of consumed food, k/calories	2042,47	1774,63	2143,25	2079,45	1870,53	2184,95
of which animal, gr.	106,32	75,21	118,05	117,55	105,57	123,58

4.2. Food security indicators not related to income

Food utilization also depends on the health status of the population as well as on the knowledge of hygiene and appropriate diets, on access to basic health services and utilities such as clean drinking water and sanitation.

4.2.1 Population morbidity

The greatest number of cases of infectious diseases falls on spring and summer periods when population consumes more water and fresh vegetables and fruits. In this period, incidence of tuberculosis and brucellosis, caused by infected animal food is increasing.

In 2006 incidence of infection diseases among population decreased by 11.6% as compared to the previous year, and was estimated at 1295.9 cases per 100 thsd. persons. During the reporting period, 3 cases of measles were registered (while no cases of measles were registered in 2005). At the same time, number of cases of varicella increased by 8.7%, while incidence of epidemic parotitis increased by 33.1%.

In 2006, cases of acute enteric infections accounted for 74.1% of total number of infection diseases, of which cases of bacillary dysentery accounted for 2.6%, typhoid fever - 2.1%, viral hepatitis - 8.6%, and malaria - 1.3%.

Among population diseased with acute enteric infections, children of 0-14 years old accounted for 84%. For bacillary dysentery this indicator reached 42.1%, while for typhoid fever it was 37.7%.

In 2006, increase in number of cases of parasitic diseases by 16.5% was observed, of which 42.7% were lambliaosis cases, 26.5% - geminolepidosis cases, 16.2% - enterobiasis, and 13.6% ascariasis cases. Among population diseased with parasitic infections, children of 0-14 years old accounted for 72.1%.

Table 12. Population morbidity caused by some specific infection diseases*(cases)*

	2005	2006 ¹	2005				2006			
			1 quarter	2 quarter	3 quarter	4 quarter	1 quarter	2 quarter	3 quarter	4 quarter
Total number of registered cases	102597	90650	10238	20973	40200	31186	10851	21963	36010	21826
of which:										
Acute enteric infections	79937	67171	4110	14710	22976	38141	5450	16662	31302	13757
of which:										
Bacterial dysentery (shigellosis)	2215	1735	192	373	1326	324	274	481	710	270
Typhoid fever	1992	1419	320	277	796	599	233	254	454	478
Tuberculosis, new cases	4112	4043	651	1378	1079	1004	833	1266	1085	859
Brucellosis	1493	1476	206	791	403	93	263	641	373	199

Table 13. Morbidity of children (0-14) by some specific infection diseases*(cases)*

	2005	2006 ¹	2005				2006			
			1 quarter	2 quarter	3 quarter	4 quarter	1 quarter	2 quarter	3 quarter	4 quarter
Total number of registered cases	76785	69357	6735	15028	28629	26393	7456	15822	28357	17722
of which:										
Acute enteric infections	62670	56485	3012	12719	26733	20206	4417	13690	26305	12073
of which:										
Bacterial dysentery (shigellosis)	794	731	63	147	483	101	105	171	349	106
Typhoid fever	802	535	156	112	301	233	87	94	141	213
Tuberculosis, new cases	300	275	38	119	66	77	44	102	69	60
Brucellosis	258	191	27	125	53	53	28	87	56	20

¹) *preliminary data*

METHODOLOGY

1. Methodology of food security analysis

“Food and nutrition security is achieved if adequate food (quantity, safety, quality, social-cultural acceptance) is available and accessible for and satisfactory used and utilized by all individuals at all time to live a healthy and active life”.

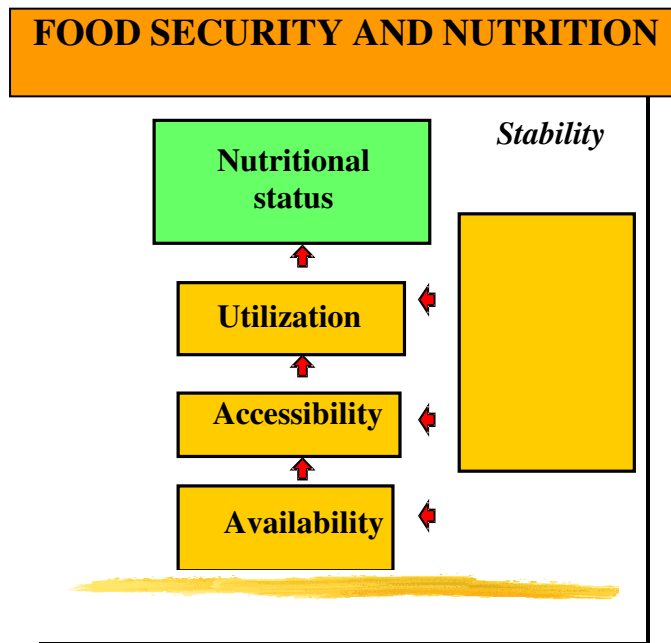
Availability physical existence of quantitatively and qualitatively adequate and safe food items.

Access: all households and household members have sufficient resources to obtain appropriate food (*through* production, purchase or donation)

Use and utilization: adequate knowledge, health and sanitation to enable the human body to digest and utilize that food

Stability: continuous ensuring of availability of, access to and appropriate use and utilization of food. If not, individuals will suffer from chronic or transitory food insecurity

For case of reference the four pillars of food and nutrition security are pictured below:



All four dimensions need to be fulfilled if there is to be food and nutrition security. As individuals and households live in a society, the 4 dimensions of FNS need to co-exist at all levels, from the individual and household level (**micro level**), to the community (village, rayon, oblast) level, representing the **meso level**, and the nation and global level

(macro level).

To monitor food security it is necessary to select relevant indicators and to measure these indicators at regular intervals.

2. Food balance methodology

Food balances for basic foodstuffs are compiled in natural terms.

In the course of the compilation of the food balance, the closing stocks as of December 31 in one year become the opening stocks on January 1 in the following year. With regard to imports and exports of products, the official data was used, in respect of production preliminary data.

Seed use is calculated on areas sown with agricultural crops as well as actual amount of seeds used for 1 ha. The calculation of lost was made according to the official norms.

In order to determine the number of eggs for the incubation the actual number of poultry offspring as well as norms on the number of chicken from the eggs laid for incubation.

The calculation of the volume of food products consumed by population as well as expenses on animal feeding was based on the data obtained during the survey of 925 households. The calculation of meat consumption also included the meat consumed in the course of observing national traditions (funeral, weddings, religious feasts, etc.)

Glossary

The *unemployed* - people of 16 and more who during period under review had no job (profitable occupation); were in search for a job i.e. applied to public employment offices or used alternative ways of job finding as well as were ready to start working.

Gross Domestic Product (GDP) - a general indicator of economic activity which is calculated in basic and market prices (nominal GDP) and in comparable prices (real GDP).

Consumer price index on goods and paid services to the population (CPI) - characterizes the change in the general price level for goods and services over time. The index measures the correlation of the value of actually set of goods and services during the given period to the value thereof during the basic period.

Average nominal monthly salary is calculated by dividing actually accrued salary fund to the staff and part-time employees by the number used for the calculation of average salary and number of months in a year during corresponding period.

Average daily per capita calorie intake measure the calories in the consumed food products per one household member as well as chemical composition in protein and fats.

Official unemployment rate - the ratio of people officially registered as unemployed to the number of economically active population, expressed in per cent.

List of abbreviations

GDP	Gross Domestic Product
GBAO	Gorno-Badakhshan Autonomous Oblast
CPI	Consumer price index on goods and paid services to the population
RRS	Regions of republican subordination
MDG	Millennium Development Goals

Appendix 1

Review of hydro meteorological conditions on the territory of the Republic of Tajikistan during the fourth quarter of 2006

Meteorological conditions

The **October** was characterized by warm and relatively dry weather. Mean air temperature on the most part of the republic exceeded the norm by 1-5°C: 16-21°C in valleys, 14-16°C foothills, 7-13°C in mountains, and 1-5°C in high altitudes.

The warmest weather was observed during first half of the month, when day-time air temperature exceeded the norm by 3-5°C and was 28-33°C in valleys, 24-29°C in northern regions on the republic, 20-25°C in mountains, and 9-14°C in high altitudes.

Rainfalls were observed mainly in the second half of the month. Amount of precipitation was 4-18 mm in valleys and foothills, 18-27 mm in mountains, and 1-6 mm in high altitudes. Total amount of precipitation during the month was below the norm, and only in some mountain regions it exceeded the norm.

In **November**, mean air temperature on the most part of the republic was above the norm by 1-3°C, and only in eastern regions of GBAO it was below the norm by 0-2°C: 8-13°C in valleys, 0-5°C in mountains, and 3-8°C below zero in high altitudes (reaching 11°C below zero in some regions).

The warmest weather was observed during first decade of the month, when day-time air temperature reached 28-32°C in valleys, and 14-19°C in mountain regions.

The coldest weather was registered on 10, 20-30 November, when day-time air temperature fell to 6-11°C in valleys (and 0-2°C on 21 November). Daily average temperature during these days was below the norm by 2-7°C.

Rainfalls were observed on 9, 10, 15-22 November. In result of entry of cold air from Siberia, rain slipped into a snow on 21 November. The heaviest rainfalls were registered on 9, 15-17, and 21 November.

Total amount of precipitation all over the republic was above the norm: 110-220% of the monthly norm in valleys, 110-240% in mountains, and 170-350% in high altitudes.

December was characterized by relatively cold weather. The mean monthly air temperature in the most of regions was below the norm by 1-5°C: 0-3°C in valleys, 1-7°C below zero in mountains, and 18-25 °C below zero in eastern parts of GBAO.

The coldest weather was registered during first 5 days of the month, when day-time air temperature didn't exceed 0-5°C, and daily average temperature was below the norm by 4-7°C.

The warmest weather was observed during third decade of the month, when day-time air temperature fluctuated from 3-8°C to 10-15°C.

The amount of precipitation on the most territory of the republic was above the norm. The heaviest snowfalls were registered in valleys on 1,5,5, and 25 December. During these days, fogs were observed in valleys.

Hydrological conditions

Gradual decrease in water content on the most rivers of the republic was registered in the **October**. Monthly water discharge of the most rivers was near or above the norm (80-120%), and above the last years values (85-130%). In Obihingou Tavildara river monthly water discharge was above the monthly average values by 30-40%.

During the month, level of Sarez lake decreased by 96 sm and amounted to 2538 sm. Content of Nurek reservoir decreased by 0.572 mln.m³ and amounted to 9869 mln.m³, which is less by 0.80 mln.m³ than the level of the previous year. During October, water level in Kairakum reservoir increased by 0.206 mln.m³ and amounted to 1386 mln.m³, which is less by 0.547 mln.m³ than the level of the previous year .

Gradual decrease in water content in the most rivers of the republic was also registered in the **November**. Monthly water discharge of the most rivers was near or above the norm (83-120%), except for Obihingou - Tavildara and Vakhsh - Darband rivers, where monthly water discharge exceeded the average annual values by 40%.

During the month, content of Nurek reservoir decreased by 0.796 mln.m³ and amounted to 9072 mln.m³, which is less by 0.076 mln.m³ than the level of the previous year. Water level in Kairakum reservoir increased by 0.466 mln.m³ and amounted to 1852 mln.m³, which is less by 0.674 mln.m³ than the level of the previous year. In November, level of Sarez lake was decreasing and amounted to 2423 sm, which is lower by 98 sm than the level of the previous year.

December was also characterized by gradual decrease in water content in the most rivers of the republic. Monthly water discharge of the most rivers was near the norm (80-120%), and within the last years values (80-120%). Level of Sarez lake decreased by 126

sm and amounted to 2395 sm, which is higher by 384 sm than the level of the previous year.

In December, content of Nurek reservoir decreased by 0.965 mln.m³ and amounted to 8107 mln.m³, which is less by 0.209 mln.m³ than the level of the previous year. Water level in Kairakum reservoir increased by 1.258 mln.m³ and amounted to 3110 mln.m³, which is less by 0.044 mln.m³ than the level of the previous year.

Review of avalanches and mudflows

October was characterized by warm weather with air temperature in mountains within the norm. Amount of precipitation all over the republic was below the norm. Thus, no avalanches and mudflows were registered and forecasted.

No mudflows were forecasted for November. Dry and warm weather, which was observed up to second decade of the month, changed into cold weather and snowfalls all over the republic. First avalanches were registered on 18 November on northern part of Anzob pass, and on 24 November on Mayhura. As mountains were covered by a snow, Anzob and Hubarabad passes were closed for motor vehicles on 22 November and 24 November, respectively. In total, three avalanches were forecasted with total duration of 6 days (proved by 100%).

No mudflows were forecasted in December. Four avalanches were forecasted with total duration of 10 days (proved by 100%). Small avalanches were observed mainly on southern slope of Gissar range. No victims or destructions were registered.

Appendix 2

PRSP Indicators in the Republic of Tajikistan

Sector	Goals	Indicators	Indicators of SCS					
			1990 ⁰	1999	2003	2004	2005	2006 ¹
Complete PRS	Increase real incomes in the country	GDP per capita (USD)	-	178,2	236,7	309,2	337,2	399,9
	Improved level of living of poorest stratum of population	Employment rate among able-bodied population (%)	-	55,6	51,7	55,3	54,3	...
Macroeconomic management	Sequent macroeconomic management oriented to reaching economic growth required for increase of population incomes	Real GDP growth (%)	98,4*	103,7	110,2	110,6	106,7	107,0
		Inflation rate (%)	-	26,3	13,7	5,7	7,1	12,5
		Credits provided by bank sector (as percentage of GDP)	...	3,6	3,3	7,4	7,3	5,6
		Share of private sector in GDP (%)	-	29,3	39,1	39,8	41,5	42,7
		Direct foreign investment (in % to GDP)	x	0,2	1,7	1,1	2,4	13,7
		State revenues (in % to GDP)	46,8	18,6	17,3	17,9	18,1	17,9
		Public expenditures (in % to GDP)	43,4	17,6	16,2	17,7	19,6	17,5
		Public expenditures for health sector (in % to GDP)	4,8	1,0	0,9	0,9	1,1	1,1
		Public expenditures for education (in % to GDP)	10,4	2,1	2,41	2,7	3,5	3,4
		Public expenditures for social protection and insurance ³⁾ (in % to GDP)	-	0,2 ²⁾	2,3	2,6	3,3	3,2
		Public expenditures for environment protection (in % to GDP)	0,03	-	0,04	0,05	0,04	0,05
		Public expenditures for agriculture (in % to GDP)			0,5	0,5	0,5	0,5
		Public expenditures for irrigation (in % to GDP)			0,2	0,1	0,12	0,27
		Public expenditures for infrastructure (transport and communication) ⁴⁾ (in % to GDP)			1,2	1,4	1,1	0,9
		Average monthly salary in public sector as compared to private sector (%)		64,5	146,9	126,5	166,6	...
		Registered unemployment rate		3,0	2,4	2,0	2,0	2,3
		Population incomes, according to households' survey, per one household member (somon)			35,38	44,42	55,48	56,68 (9 months)
Reforms in public administration	Creation of effective judicial service	Average salary of judge (somon)		20,9	50,34	54,36	91,16	...

Sector	Goals	Indicators	Indicators of SCS						
			1990 ⁰	1999	2003	2004	2005	2006 ¹	
Social protection	Guaranteed incomes of poor populations, ensuring effectiveness of targeted assistance	Number of employed per one pensioner (persons)	2,2	3,10	3,53	3,59	3,84	...	
		Average monthly pension (somon)	x	3,53	13,07	16,92	27,51	40,96 (9 months)	
		Number of pensioners receiving disability pension (thsd.persons)	48,0	67,8	78,2	79,1	84,1	85,1 (9 months)	
Education	Increase of literacy rate and level of general education of population	Coverage by primary education ratio [7-10 years old (1-4 forms)]	90,9	97,4	99,6	99,2	99,0	98,0	
		Coverage by basic education ratio [7-15 years old (1-9 forms)]	94,8	89,1	95,4	95,4	95,6	95,8	
		Coverage by secondary education ratio [16-17 years old (10-11 forms)]	x	35,7	42,0	46,1	46,4	47,6	
	Ensuring access to primary and secondary education	Number of pupils per 1 teacher							
		Schools	14	15,1	16,2	17	17	17	
		institutions of higher educations-specialised secondary educational establishment	12,8	13,4	16,0	16,2	17,4	17,3	
			11,5	11	11,1	11,0	13	11	
	Eliminate gender disparity in access to education	Proportion of boys and girls in primary school:	boys	51,2	52,6	52,0	51,8	52,0	51,9
			girls	48,8	47,4	48,0	48,2	48,0	48,1
		in secondary school:	boys	49,8	59,6	60,5	60,7	51,2	61,1
girls			50,2	40,4	39,5	39,3	38,8	38,9	
Health care		Improved quality of public health services and improved access of poor population to health services	Maternal mortality	42,9	44,2	37,7	39,0	33,1	...
			Infant mortality	43,3	65 ⁵	...
	Mortality of children under 5 years old		65,0	79 ⁵	...	
	Share of births delivered with assistance of skilled medical personnel, %		-	66,6	71,4	75,1	76,2	...	
	Percentage of children aged 1 year who received DPT vaccinations		86,8	98,7	96,3	96,0	94,5	...	
	Number of HIV cases		-	-	119	317	506	626	

Sector	Goals	Indicators	Indicators of SCS					
			1990 ⁰	1999	2003	2004	2005	2006 ¹
		Number of tuberculosis cases per 100000 population	44,4	42,1	66,5	66,6	60,1	57,8
		Number of malaria cases per 100000 population	-	222,0	71,6	48,4	29,1	1,8
		Number of typhoid fever and paratyphoid ABC per 100000 population	48,0	122,0	48,9	38,5	29,4	20,5
		Number of measles cases per 100000 population	130,4	3	33	0,3	0	0,004
Agriculture and Irrigation	Ensure effective use of land and water, as well as fair access of poor population to land and water	Share of population engaged in agricultural sector, %	-	64,4	67,6	66,6	67,5	67,2
		Wages and salary in agricultural sector, somoni	-	5,38	27,00	35,63	38,39	43,04
Development of private sector	Create favorable conditions for private sector functioning	Receipt of funds from privatization by state budget, mln.somoni	-	17,7	21,7	35,9	43,5	...
Infrastructure	Ensure access to steady and satisfactory infrastructure public services for the poorest strata of population	Number of telephone lines per 100 residents	-	3,51	3,65	3,83	3,29	3,33
		Number of mobile (cell) phones per 100 residents	-	...	0,73	2,5	5,9	12,6
		Number of Internet users per 1000 inhabitants	-	...	0,2	0,3	2,8	0,7
		Share of population having continuous access to potable water (urban and rural)	-	44%	-	-	-	-
Environment and tourism	Eliminate serious environmental threats to population health and safety of ecosystem	CO ₂ emission per capita, and use of destroying chlorine and fluorine containing compounds (metric tons of ozone depleters)	-	0,007	0,002	0,001	0,001	...
	Promote establishing of positive image of the country as well as development of tourism	Number of tourists, of which foreigners	-	/-	/887	/401	/318	/572

⁰ – reference year for MDG

¹ – preliminary data of SCS

² – social security

³ – social protection and social insurance

⁴ – data on energy are reflected in item on «данные по энергетике отражены в статье «Fuel and energy complex»

* – for 1992

⁵ – data obtained from MICS3

APPENDIX 3. CHANGES IN AVERAGE WHOLESALE PRICES (SUPPLY) IN TAJIKISTAN (somon / kg)

Regions	I quarter			II quarter			III quarter			IV quarter		
	2004	2005	2006	2004	2005	2006	2004	2005	2006	2004	2005	2006
	Potatoes											
GBAO	-	-	-	0,30	0,30	-	0,27	0,30	-	0,29	0,40	-
Sogd Oblast	0,16	0,12	0,25	0,26	0,13	0,23	0,11	0,10	0,30	0,12	0,31	0,54
Khatlon Oblast	0,5	0,43	0,38	0,27	0,30	0,35	0,18	0,43	0,37	0,17	0,31	0,42
RRS	0,50	0,30	0,64	0,26	0,29	0,70	0,19	0,37	0,50	0,20	0,40	0,42
Average in the Republic	0,18	0,13	0,28	0,27	0,19	0,35	0,17	0,29	0,44	0,18	0,36	0,49
	Milk											
GBAO	0,50	-	-	0,50	0,50	1,0	0,45	-	-	0,44	-	0,54
Sogd Oblast	0,30	0,39	0,45	0,30	0,38	0,45	0,28	0,37	0,43	0,27	0,37	1,00
Khatlon Oblast	0,19	0,17	0,24	0,24	0,19	0,27	0,20	0,21	0,30	0,18	0,23	0,45
RRS	0,44	0,61	0,74	0,44	0,57	0,73	0,44	0,58	0,72	0,43	0,61	0,46
Average in the Republic	0,32	0,42	0,51	0,32	0,41	0,52	0,31	0,41	0,51	0,29	0,41	0,54
	Wheat											
GBAO	0,45	-	0,44	0,45	-	0,19	0,45	0,60	0,50	0,45	0,60	0,50
Sogd Oblast	0,25	0,39	0,43	0,30	0,38	0,37	0,26	0,30	0,42	0,30	0,37	0,38
Khatlon Oblast	0,46	0,62	0,54	0,43	0,29	0,33	0,28	0,28	0,33	0,32	0,30	0,37
RRS	0,35	0,54	0,48	0,36	0,46	0,47	0,33	0,60	0,45	0,36	0,46	0,46
Average in the Republic	0,32	0,42	0,44	0,33	0,34	0,35	0,28	0,31	0,39	0,33	0,36	0,39

APPENDIX 4. CHANGES IN AVERAGE CONSUMER PRICES IN TAJIKISTAN IN 2005-2006 (somon / kg)

	I quarter		II quarter		III quarter		IV quarter	
	2005	2006	2005	2006	2005	2006	2005	2006
	Potatoes							
Dushanbe	0,62	1,25	0,85	1,23	0,77	1,20	0,82	1,33
Sogd Oblast	0,32	1,29	0,58	1,20	0,56	0,94	0,64	1,10
Khatlon Oblast	0,62	1,25	0,72	1,13	0,79	1,20	0,82	1,33
Average in the Republic	0,52	1,26	0,71	1,19	0,71	1,11	0,76	1,25
	Milk							
Dushanbe	1,37	1,80	1,40	1,77	1,40	1,80	1,60	1,82
Sogd Oblast	0,60	0,71	0,57	0,67	0,58	0,67	0,63	0,80
Khatlon Oblast	0,52	0,68	0,48	0,73	0,49	0,75	0,64	0,85
Average in the Republic	0,83	1,06	0,82	1,06	0,82	1,08	0,95	1,15
	Flour of 1st grade							
Dushanbe	1,05	1,00	1,05	0,98	1,03	0,98	1,03	1,00
Sogd Oblast	0,95	0,90	0,94	0,89	0,90	0,93	0,90	0,99
Khatlon Oblast	1,05	0,99	1,05	0,96	1,03	0,93	1,03	0,99
Average in the Republic	1,02	0,96	1,01	0,94	0,99	0,95	0,98	0,99
	Wheat							
Dushanbe	0,65	0,75	0,75	0,78	0,84	0,80	0,70	0,80
Sogd Oblast	0,59	0,48	0,59	0,49	0,53	0,63	0,53	0,72
Khatlon Oblast	0,70	0,65	0,70	0,65	0,59	0,63	0,63	0,68
Average in the Republic	0,65	0,62	0,68	0,64	0,65	0,69	0,62	0,73
	Rice							
Dushanbe	1,67	2,57	2,03	2,80	2,65	3,13	2,60	2,98
Sogd Oblast	1,44	2,23	1,72	2,44	2,29	2,66	2,17	2,62
Khatlon Oblast	1,44	2,23	1,80	2,54	2,35	2,65	2,16	2,66
Average in the Republic	1,52	2,34	1,85	2,59	2,43	2,82	2,31	2,76
	Sugar							
Dushanbe	1,53	2,20	1,67	2,50	1,75	2,55	1,75	2,50
Sogd Oblast	1,54	2,18	1,69	2,50	1,70	2,52	1,75	2,45
Khatlon Oblast	1,53	2,18	1,67	2,46	1,74	2,49	1,74	2,44
Average in the Republic	1,54	2,19	1,68	2,49	1,73	2,52	1,75	2,46

	I quarter		II quarter		III quarter		IV quarter	
	2005	2006	2005	2006	2005	2006	2005	2006
Onion								
Dushanbe	0,64	0,72	0,52	0,63	0,38	0,77	0,41	0,85
Sogd Oblast	0,34	0,38	0,42	0,49	0,23	0,57	0,21	0,59
Khatlon Oblast	0,65	0,68	0,52	0,55	0,31	0,72	0,40	0,83
Average in the Republic	0,54	0,60	0,49	0,56	0,31	0,69	0,34	0,76
Cotton oil								
Dushanbe	2,82	2,80	2,80	2,75	2,80	2,72	2,80	3,27
Sogd Oblast	2,82	2,55	2,73	2,46	2,73	2,74	2,70	3,26
Khatlon Oblast	2,60	2,56	2,65	2,52	2,60	2,60	2,60	3,00
Average in the Republic	2,74	2,64	2,69	2,58	2,71	2,69	2,70	3,18
Mutton								
Dushanbe	8,25	9,00	8,25	9,83	8,33	10,17	8,75	11,67
Sogd Oblast	8,43	9,42	8,19	9,80	8,49	10,83	9,27	12,50
Khatlon Oblast	7,67	8,13	7,37	8,53	7,50	9,24	7,99	10,05
Average in the Republic	8,12	8,85	7,93	9,39	8,11	10,08	8,67	11,67
Beef								
Dushanbe	7,00	8,50	7,27	8,58	7,75	9,83	8,50	10,83
Sogd Oblast	6,47	7,30	6,21	7,47	6,55	8,32	7,21	9,61
Khatlon Oblast	6,40	7,02	6,30	7,23	6,59	8,20	7,07	8,96
Average in the Republic	6,62	7,61	6,59	7,76	6,96	8,78	7,59	9,80
Chicken meet								
Dushanbe	6,22	6,38	6,22	6,22	6,22	7,17	6,22	7,50
Sogd Oblast	5,64	6,22	5,53	6,78	5,86	6,89	6,51	7,20
Khatlon Oblast	6,33	6,59	6,33	6,33	6,33	7,26	6,33	7,26
Average in the Republic	6,06	6,33	6,03	6,44	6,14	7,10	6,35	7,32
Eggs (10 pieces)								
Dushanbe	3,03	2,80	2,93	2,87	3,27	3,03	3,30	3,73
Sogd Oblast	2,82	2,88	2,23	2,42	2,61	2,96	3,23	3,71
Khatlon Oblast	3,00	2,65	3,00	2,64	2,85	2,87	3,30	3,62
Average in the Republic	2,95	2,87	2,72	2,64	2,91	2,96	3,28	3,69

APPENDIX 5. FOOD BALANCE OF THE REPUBLIC OF TAJIKISTAN for 2003-2006

	Basic foodstuffs (physical quantities)	Bread and bread products in grain, thousand tons				Potatoes fresh, thousand tons				Vegetables and melons fresh, thousand tons				Fruits and berries fresh, thousand tons				Sugar and confectionery, in sugar, thousand tons			
		2003	2004	2005	2006	2003	2004	2005	2006	2003	2004	2005	2006	2003	2004	2005	2006	2003	2004	2005	2006
1.	Stocks at the beginning of the period	223,2	215,7	121,8	423,9	87,8	234,9	264,7	403,8	15,9	95,0	21,6	192,2	32,3	13,0	3,3	2,5	10,4	47,4	20,6	81,9
2.	Food production in the country (+)	660,2	679,0	618,5	633,1	473,3	527,2	555,1	573,4	721,5	829,8	888,8	759,2	117,3	237,6	237,6	315,8	0,4	1,6	1,9	2,5
3.	Food imports (+)	353,3	276,8	725,5	675,5	0,9	0,6	0,5	11,5	0,3	2,4	39,7	1,2	0,3	4,8	5,6	9,8	95,8	109,1	123,2	140,9
	Availability (1-3) (+)	1236,7	1171,5	1465,8	1732,5	562,0	762,7	820,3	988,7	737,7	927,2	950,1	952,6	149,9	255,4	246,5	328,1	106,6	158,1	145,7	225,3
4.	Used for seed (-)	60,0	107,2	140	64	104,0	162,2	84,0	112,0	-	-	-	-	-	-	-	-	-	-	-	-
5.	Used as fodder (-)	-	-	4,0	4,0	-	-	-	98,8	-	-	-	95,0	-	-	-	13,0	-	-	-	-
6.	Losses (-)	12,0	12,1	5,0	6,0	25,0	30,0	31,0	30,0	78,0	100,0	1,7	95,0	7,0	9,1	1,2	4,9	-	-	-	-
7.	Food exports (-)	0,3	-	0,3	0,1	0,3	0,3	0,3	0,01	44,2	90,6	37,5	31,2	55,1	57,9	37,6	29,5	-	-	0,028	-
8.	Availability for consumption by the population (-)	908,7	927	891,4	1007,5	197,8	304,5	300,0	325,0	520,5	715,0	717,8	720,0	74,8	172,4	205,2	268,8	59,2	109,6	59,8	77,0
9.	Other utilization (-)	40,0	3,4	1,2	2,0	-	1,0	1,2	1,5	-	-	0,9	1,0	-	12,7	-	9,0	-	27,9	4,0	30,0
	Consumption (4-9) (-)	1021	1049,7	1041,9	1083,6	327,1	498,0	416,5	567,3	642,7	905,6	757,9	942,2	136,9	252,1	244,0	325,2	59,2	137,5	63,8	107,0
10	Stocks at the end of the period	215,7	121,8	423,9	648,9	234,9	264,7	403,8	421,4	95,0	21,6	192,2	10,4	13,0	3,3	2,5	2,9	47,4	20,6	81,9	118,3

	Basic foodstuffs (physical quantities)	Meat and meat products in carcass weight, thousand tons				Milk and dairy products, in milk, thousand tons				Eggs, million				Vegetable oil, thousand tons				Fish and fish products, tons			
		2003	2004	2005	2006	2003	2004	2005	2006	2003	2004	2005	2006	2003	2004	2005	2006	2003	2004	2005	2006
1.	Stocks at the beginning of the period	0,2	8,7	0,6	3,3	1,9	0,6	0,6	0,9	1,0	3,3	1,0	1,2	0,7	0,9	5,0	10,4	11,0	11,0	6,7	4,9
2.	Food production in the country (+)	49,1	48,2	53,5	111,7	459,1	489,5	533,0	544,8	57,1	77,7	98,7	104,7	36,0	28,2	22,9	23,0	234	146,7	178,5	172,1
3.	Food imports (+)	3,6	6,2	12,4	14,9	0,8	1,6	12,4	2,8	43,2	48,0	78,4	160,0	1,2	36,1	56,0	42,4	200	173	269,0	184,4
	Availability (1-3) (+)	52,9	63,1	66,5	129,9	461,8	491,7	546,0	548,5	101,3	129,0	178,1	265,9	37,9	65,2	83,9	75,8	445	330,7	454,2	361,4
4.	Used for seed (-)	-	-	-	-	-	-	-	-	-	-	-	-	-	-	-	-	-	-	-	-
5.	Used as fodder (-)	-	-	-	-	-	-	-	-	-	-	-	-	-	-	-	-	-	-	-	-
6.	Losses (-)	-	-	-	-	-	-	-	-	-	-	-	0,5	-	-	-	-	-	-	-	-
7.	Food exports (-)	-	-	-	0,0	-	0,1	-	0,0	-	-	-	-	-	-	0,2	0,0	-	-	-	0,0
8.	Availability for consumption by the population (-)	44,2	62,5	63,2	123,9	461,2	489,0	543,5	545,6	98,0	127,2	176,5	260,0	37,0	60,2	69,8	66,8	434	324,0	449,3	360,4
9.	Other utilization (-)	-	-	-	2,0	-	2,0	1,6	2,0	-	0,8	0,4	0,4	-	-	3,5	4,0	-	-	-	-
	Consumption (4-9) (-)	44,2	62,5	63,2	125,3	461,2	491,1	545,1	547,6	98,0	128,0	176,9	264,4	37,0	60,2	73,5	70,8	434	324,0	449,3	360,4
10.	Stocks at the end of the period	8,7	0,6	3,3	4,0	0,6	0,6	0,9	0,9	3,3	1,0	1,2	1,5	0,9	5,0	10,4	5,0	11,0	6,7	4,9	1,0

FOOD BALANCE OF THE REPUBLIC OF TAJIKISTAN for 2005, by quarters

	Basic foodstuffs (physical quantities)	Bread and bread products in grain, thousand tons				Potatoes fresh, thousand tons				Vegetables and melons fresh, thousand tons				Fruits and berries fresh, thousand tons				Sugar and confectionery, in sugar, thousand tons			
		I q.	II q.	III q.	IV q.	I q.	II q.	III q.	IV q.	I q.	II q.	III q.	IV q.	I q.	II q.	III q.	IV q.	I q.	II q.	III q.	IV q.
1.	Stocks at the beginning of the period	121,8	65,4	271,1	638,7	264,7	101,2	137,9	293,3	21,6	2,0	6,0	248,0	3,3	0,8	0,8	53,7	20,6	13,5	37,2	67,8
2.	Food production in the country (+)	-	174	439,0	192,0	-	73,9	236,6	244,6	0,4	89,6	516,5	282,3	-	14,6	115,0	109,4	0,4	0,8	0,7	-
3.	Food imports (+)	100,5	257,7	154,9	222,4	-	0,2	-	0,3	0,2	0,7	-	38,8	1,9	-	0,5	3,2	18,5	33,1	42,9	28,7
	Availability (1-3) (+)	222,3	497,1	865,0	1053,1	264,7	175,3	374,5	538,2	22,2	92,3	522,5	569,1	5,2	15,4	116,3	166,3	39,5	47,4	80,8	96,5
4.	Used for seed (-)	80,0	-	-	60	80,0	-	-	4,0	-	-	-	-	-	-	-	-	-	-	-	-
5.	Used as fodder (-)	-	-	-	-	-	-	-	-	-	-	-	-	-	-	-	-	-	-	-	-
6.	Losses (-)	-	-	-	5,0	7,0	-	1,0	23,0	1,7	-	-	-	0,1	0,1	-	1,0	-	-	-	-
7.	Food exports (-)	0,2	0,1	-	-	0,2	-	-	0,1	2,7	3,0	31,8	-	-	-	37,6	-	-	0,028	-	-
8.	Availability for consumption by the population (-)	76,4	225,6	226,0	363,4	76,0	37,1	79,9	107,0	15,8	83,3	242,7	376,0	4,3	14,5	25,0	161,4	25,0	9,2	12,0	13,6
9.	Other utilization (-)	0,3	0,3	0,3	0,3	0,3	0,3	0,3	0,3	-	-	-	0,9	-	-	-	-	1,0	1,0	1,0	1,0
	Consumption (4-9) (-)	156,9	226,0	226,3	428,7	163,5	37,4	81,2	134,4	20,2	86,3	274,5	376,9	4,4	14,6	62,6	162,4	26,0	10,2	13,0	14,6
10.	Stocks at the end of the period	65,4	271,1	638,7	624,4	101,2	137,9	293,3	403,8	2,0	6,0	248,0	192,2	0,8	0,8	53,7	3,9	13,5	37,2	67,8	81,9

	Basic foodstuffs (physical quantities)	Meat and meat products in carcass weight, thousand tons				Milk and dairy products, in milk, thousand tons				Eggs, million				Vegetable oil, thousand tons				Fish and fish products, tons			
		I q.	II q.	III q.	IV q.	I q.	II q.	III q.	IV q.	I q.	II q.	III q.	IV q.	I q.	II q.	III q.	IV q.	I q.	II q.	III q.	IV q.
1.	Stocks at the beginning of the period	0,6	0,5	0,6	1,5	0,6	0,6	0,6	0,8	1,0	0,5	0,5	0,3	5,0	1,0	1,0	2,4	6,7	0,7	0,5	3,7
2.	Food production in the country (+)	9,6	9,3	14,6	20,0	99,2	119,3	141,6	172,9	22,2	24,3	26,6	25,6	8,0	2,8	5,0	7,1	-	82	42,4	54,1
3.	Food imports (+)	3,3	2,0	2,3	4,8	0,3	2,4	-	9,7	17,8	11,4	15,3	33,9	8,2	12,7	12,6	22,5	81	14	82,8	91,2
	Availability (1-3) (+)	13,5	11,8	17,5	26,3	100,1	122,3	142,2	183,4	41,0	36,2	42,4	59,8	21,2	16,5	18,6	32,0	87,7	96,7	125,7	149,0
4.	Used for seed (-)	-	-	-	-	-	-	-	-	-	-	-	-	-	-	-	-	-	-	-	-
5.	Used as fodder (-)	-	-	-	-	-	-	-	-	-	-	-	-	-	-	-	-	-	-	-	-
6.	Losses (-)	-	-	-	-	-	-	-	-	-	-	-	-	-	-	-	-	-	-	-	-
7.	Food exports (-)	-	-	-	-	-	-	-	-	-	-	-	-	-	-	0,2	-	-	-	-	-
8.	Availability for consumption by the population (-)	13,0	11,2	16,0	23,0	99,0	121,4	141,0	182,1	40,4	35,6	42,0	58,9	16,7	15,5	16,0	21,6	87,0	96,2	122,0	144,1
9.	Other utilization (-)	-	-	-	-	0,5	0,3	0,4	0,4	0,1	0,1	0,1	0,1	0,1	3,5	-	-	-	-	-	-
	Consumption (4-9) (-)	13,0	11,2	16,0	23,0	99,5	121,7	141,4	182,5	40,5	35,7	42,1	58,6	20,2	15,5	16,2	21,6	87,0	96,2	122,0	144,1
10.	Stocks at the end of the period	0,5	0,6	1,5	3,3	0,6	0,6	0,8	0,9	0,5	0,5	0,3	1,2	1,0	1,0	2,4	10,4	0,7	0,5	3,7	4,9

FOOD BALANCE OF THE REPUBLIC OF TAJIKISTAN for 2006, by quarters

	Basic foodstuffs (physical quantities)	Bread and bread products in grain, thousand tons				Potatoes fresh, thousand tons				Vegetables and melons fresh, thousand tons				Fruits and berries fresh, thousand tons				Sugar and confectionery, in sugar, thousand tons			
		I q.	II q.	III q.	IV q.	I q.	II q.	III q.	IV q.	I q.	II q.	III q.	IV q.	I q.	II q.	III q.	IV q.	I q.	II q.	III q.	IV q.
1.	Stocks at the beginning of the period	421,9	320,5	361,7	581,7	403,8	327,2	243,5	421,8	192,2	52,5	3,3	154,5	2,5	-	0,6	39,8	81,9	90,8	89	43,1
2.	Food production in the country (+)	-	220,3	412,8	-	-	85,4	228,9	259,1	0,5	121,1	382,4	255,2	-	24,7	154,3	136,8	-	1,2	-	1,3
3.	Food imports (+)	229,2	14,4	82,5	349,4	-	7,3	0,5	3,7	0,1	0,8	0,1	0,2	5,0	1,1	0,8	2,9	22,9	18,5	10,1	89,4
	Availability (1-3) (+)	653,1	555,2	857,0	931,1	403,8	419,9	472,9	684,6	192,8	174,4	385,8	409,9	7,5	25,8	155,7	179,5	104,8	110,5	99,1	133,8
4.	Used for seed (-)	81,0	-	-	162,0	-	111,7	-	0,3	-	-	-	-	-	-	-	-	-	-	-	-
5.	Used as fodder (-)	-	-	-	4,0	-	-	-	98,8	-	-	-	95	-	-	-	13,0	-	-	-	-
6.	Losses (-)	-	-	-	6,0	24,0	12,0	16	-	11,6	-	15	68,4	-	-	-	4,9	-	-	-	-
7.	Food exports (-)	-	-	0,1	-	-	0,005	65,1	-	-	7,7	23,1	0,4	-	21,9	6,7	0,9	-	0,003	0,001	-
8.	Availability for consumption by the population (-)	251,6	193,0	274,9	288,0	52,6	93,6	-	162,6	128,7	163,4	111,6	235,7	7,5	3,3	106,2	157,8	13,6	50,0	17,5	5,9
9.	Other utilization (-)	-	0,5	0,3	1,2	-	-	-	1,5	-	-	-	-	7,5	-	3,0	-	0,4	-	20	9,6
	Consumption (4-9) (-)	332,6	193,5	275,3	461,2	76,6	176,4	51,1	263,2	140,3	171,1	231,3	399,5	-	25,2	115,9	176,6	14,0	50,0	56,0	15,5
10.	Stocks at the end of the period	320,5	361,7	581,7	469,9	327,2	243,5	421,8	421,4	52,5	3,3	154,5	10,4	-	0,6	39,8	2,9	90,8	60,5	43,1	118,3

	Basic foodstuffs (physical quantities)	Meat and meat products in carcass weight, thousand tons				Milk and dairy products, in milk, thousand tons				Eggs, million				Vegetable oil, thousand tons				Fish and fish products, tons			
		I q.	II q.	III q.	IV q.	I q.	II q.	III q.	IV q.	I q.	II q.	III q.	IV q.	I q.	II q.	III q.	IV q.	I q.	II q.	III q.	IV q.
1.	Stocks at the beginning of the period	3,3	5,1	15,3	15,9	0,9	24,0	36	24,7	1,2	28,9	9,2	0,7	10,4	8,4	3,8	-3,8	4,9	-	-	-
2.	Food production in the country (+)	15,4	24,1	14,9	57,3	101,5	124,6	148,3	170,4	24,1	25,1	29,5	26	8,0	2,8	0,7	11,5	-	0,1	0,1	171,9
3.	Food imports (+)	-	10,7	3,4	0,8	0,6	0,5	0,6	1,1	36,8	-	-	123,2	9,5	12,4	10,9	9,6	-	68	36,7	79,7
	Availability (1-3) (+)	18,7	39,9	33,6	74	103,0	149,1	152,5	196,2	62,1	54	38,7	149,9	27,9	23,6	15,4	17,3	4,9	68,1	36,8	251,6
4.	Used for seed (-)																				
5.	Used as fodder (-)																				
6.	Losses (-)											0,5									
7.	Food exports (-)	-	0,085			-	0,016			-	-			-	0,003	0,01		-	-		
8.	Availability for consumption by the population (-)	13,6	24,5	16,7	69	78,0	112,1	125,2	195,3	33,2	44,8	38,0	147,5	19,5	19,8	9,2	8,3	4,9	68,1	36,8	250,6
9.	Other utilization (-)			1,0	1	1,0	1,0	2					0,4				4				
	Consumption (4-9) (-)	13,6	24,6	17,7	70	79,0	113,1	127,8	195,3	33,2	44,8	38	148,4	19,5	19,8	19,2	12,3	4,9	68,1	36,8	250,6
10.	Stocks at the end of the period	5,1	15,3	15,9	4,0	24,0	36,0	24,7	0,9	28,9	9,2	0,7	1,5	8,4	3,8	-3,8	5,0	-	-	-	1,0

**APPENDIX 6. MONEY INCOMES, EXPENDITURES AND CONSUMPTION OF HOUSEHOLDS, IN THE REPUBLIC OF TAJIKISTAN,
BY DECILE POPULATION GROUPS (according to sampling household budget survey)**

	All households				of which:							
	the poorest 10% of population		the richest 10% of population		Urban				Rural			
	9 months of 2005	9 months of 2006	9 months of 2005	9 months of 2006	9 months of 2005	9 months of 2006	9 months of 2005	9 months of 2006	9 months of 2005	9 months of 2006	9 months of 2005	9 months of 2006
Money incomes , somoni	10,95	19,02	125,29	159,42	20,41	34,19	168,67	198,75	9,49	12,96	106,52	144,80
of which:												
labor incomes	7,46	14,14	52,79	61,44	17,00	28,05	97,23	125,02	6,24	8,66	28,21	37,57
social payments (pension, scholarships, benefits and other payments)	1,08	2,25	3,05	4,08	1,17	3,42	5,05	9,85	0,97	1,76	1,67	1,92
receipts from sales of agricultural products, feeds, livestock, etc.	1,25	0,54	16,85	22,79			1,80	0,91	1,39	0,73	26,37	31,05
Expenditures , somoni	17,72	28,11	115,88	143,11	24,01	39,20	117,73	195,14	16,85	23,35	90,26	123,69
of which:												
consumer expenditures	16,83	26,38	79,53	123,46	23,29	37,76	103,60	167,14	15,94	21,55	67,71	107,16
purchase of foods, including public catering	12,38	18,09	39,94	47,87	19,29	27,55	56,49	75,11	11,42	14,17	31,98	37,67
purchase of nonfoods for personal consumption	2,61	4,69	26,33	52,37	1,81	5,38	28,94	55,61	2,78	4,32	24,82	51,22
services	1,81	3,55	12,39	22,80	2,28	4,82	17,43	36,23	1,70	2,99	9,95	17,77
purchase of alcoholic beverages	0,03	0,06	0,88	0,41		0,02	0,82	0,19	0,03	0,07	0,96	0,50
Consumption of main foodstuffs, per 1 household member, kg												
Bread and bread products	11,48	10,56	14,91	15,47	7,77	8,50	10,80	12,30	12,12	11,08	17,39	16,66
Potatoes	1,95	1,82	3,53	2,95	1,80	1,70	3,51	3,53	2,04	1,82	3,56	2,73
Vegetables and melons	4,40	5,20	10,37	10,32	3,51	6,14	10,13	10,19	4,64	4,73	10,69	10,38
Fruits and berries, including dry	0,52	0,44	1,20	1,23	0,26	0,52	1,33	1,96	0,62	0,39	1,10	0,95
Meat and meat products	0,29	0,33	1,25	1,12	0,25	0,39	1,43	1,71	0,31	0,31	1,12	0,90
Milk and dairy products	3,09	2,68	7,11	7,74	1,02	1,79	5,67	8,21	3,45	2,94	7,90	7,57
Fish and fish products			0,01	0,01			0,03	0,04				0,01
Eggs (pieces)	2	2	4	3	1	2	4	4	2	2	4	3
Sugar and confectionery	0,64	0,56	1,07	1,15	0,51	0,63	1,22	1,49	0,67	0,52	1,02	1,02
Vegetable oil and other fats	0,71	0,76	1,24	1,31	0,65	0,92	1,31	1,31	0,73	0,68	1,25	1,30

**APPENDIX 7. DISTRIBUTION OF HOUSEHOLDS AND POPULATION IN THEM BY PER CAPITA INCOME
IN THE REPUBLIC OF TAJIKISTAN IN JANUARY - SEPTEMBER OF 2005-2006** (according to sampling household budget surveys, in %)

	Distribution by money income in Jan-Sept of 2005			
	Total income		Disposable income	
	Number of households surveyed	Population in them	Number of households surveyed	Population in them
Total number	925	5425	925	5425
Including those with monthly per capita income (somon):				
below 10,00	8,8	9,4	9,0	9,6
10,01-15,00	7,1	8,3	7,2	8,3
15,01-20,00	8,8	10,3	9,1	10,6
20,01-25,00	10,2	11,7	10,2	11,7
25,01-30,00	9,2	9,8	9,9	10,4
30,01-35,00	8,6	8,8	8,4	8,7
35,01-40,00	8,1	8,2	8,2	8,2
40,01-45,00	6,3	6,0	6,7	6,4
45,01-50,00	5,6	5,2	5,3	4,9
50,01-55,00	4,0	3,8	4,0	3,7
55,01-60,00	3,5	3,0	3,7	3,0
60,01-65,00	3,0	2,6	2,9	2,5
65,01-70,00	2,2	1,8	1,8	1,5
70,01-75,00	1,9	1,5	1,8	1,4
75,01-80,00	1,7	1,3	1,5	1,1
80,01-85,00	1,3	1,1	1,3	1,0
85,01-90,00	1,1	0,9	0,9	0,8
90,01-95,00	0,7	0,5	0,7	0,5
95,01 and more	7,9	5,8	7,4	5,7

	Distribution by money income in Jan - Sept of 2006			
	Total income		Disposable income	
	Number of households surveyed	Population in them	Number of households surveyed	Population in them
Total number	925	5391	925	5391
Including those with monthly per capita income (somon):				
below 15,00	10,2	11,3	10,3	11,6
15,01-20,00	5,6	6,6	5,7	6,7
20,01-25,00	5,5	6,6	5,7	6,7
25,01-30,00	7,6	9,1	7,7	9,2
30,01-35,00	6,7	7,9	6,7	7,9
35,01-40,00	6,8	7,3	7,3	7,9
40,01-45,00	6,5	7,1	6,8	7,3
45,01-50,00	6,3	6,2	6,2	6,1
50,01-55,00	5,0	4,9	5,0	4,8
55,01-60,00	4,7	4,5	4,6	4,4
60,01-65,00	3,9	3,6	3,9	3,6
65,01-70,00	3,4	3,1	3,4	3,1
70,01-75,00	3,1	2,7	2,9	2,6
75,01-80,00	2,5	2,3	2,5	2,2
80,01-85,00	2,5	2,1	2,3	1,9
85,01-90,00	2,0	1,7	2,0	1,6
90,01-95,00	1,2	1,0	1,2	0,9
95,01-100,00	1,6	1,3	1,6	1,3
100,01 and more	14,9	10,7	14,2	10,2

APPENDIX 8. STRUCTURE OF AVERAGE MONTHLY EXPENDITURES OF POPULATION IN THE REPUBLIC OF TAJIKISTAN
(according to sampling household budget survey)

	9 months of 2005						9 months of 2006					
	Per 1 household member, somoni / month	of which:		Per 1 household member, in %	of which:		Per 1 household member, somoni / month	of which:		Per 1 household member, in %	of which:	
		Urban area	Rural area		Urban area	Rural area		Urban area	Rural area		Urban area	Rural area
Money expenditures	41,99	57,09	36,25	100,00	100,00	100,00	56,33	79,64	47,75	100,00	100,00	100,00
of which:												
Consumer expenditures	35,62	46,91	31,33	84,8	82,2	86,4	51,08	72,57	43,17	90,7	91,1	90,4
including:												
on foods	22,93	31,64	19,61	64,4	67,4	62,6	29,48	42,46	24,70	57,7	58,5	57,2
on nonfoods	8,36	9,31	8,00	23,5	19,8	25,5	14,16	18,31	12,63	27,7	25,2	29,3
including:												
clothes, footwear, fabrics	3,72	4,71	3,34	44,5	50,6	41,8	5,07	7,48	4,18	35,8	40,9	33,1
furniture and cultural and household appliances	0,98	1,08	0,93	11,7	11,6	11,6	2,12	4,43	1,27	15,0	24,2	10,1
medicines	0,55	0,59	0,53	6,6	6,3	6,6	0,92	1,22	0,81	6,5	6,7	6,4
building materials	1,12	0,26	1,45	13,4	2,8	18,1	2,25	1,36	2,58	15,9	7,4	20,4
fuel	0,12	0,07	0,14	1,4	0,8	1,8	0,18	0,11	0,20	1,3	0,6	1,6
tobacco goods, makhorka	0,18	0,17	0,18	2,2	1,8	2,3	0,22	0,22	0,22	1,6	1,2	1,7
alcoholic beverages	0,15	0,11	0,17	0,4	0,2	0,5	0,13	0,08	0,16	0,3	0,1	0,4
services	4,18	5,85	3,55	11,7	12,5	11,3	7,31	11,72	5,68	14,3	16,1	13,2
of which:												

	9 months of 2005						9 monts of 2006					
	Per 1 house-hold member, somoni / month	of which:		Per 1 house-hold member, in %	of which:		Per 1 house-hold member, somoni / month	of which:		Per 1 house-hold member, in %	of which:	
		Urban area	Rural area		Urban area	Rural area		Urban area	Rural area		Urban area	Rural area
housing and communal services	1,23	1,79	1,02	29,4	30,6	28,7	1,87	3,54	1,25	25,6	30,2	22,0
including payments for :												
dwelling space	0,07	0,11	0,06	5,7	6,1	5,9	0,11	0,23	0,06	5,9	6,5	4,8
communal services	1,16	1,68	0,96	94,3	93,9	94,1	1,76	3,31	1,14	94,1	93,5	91,2
o/w electric energy	0,55	0,56	0,54	47,4	33,3	56,3	0,77	1,19	0,61	43,8	36,0	53,5
personal services	0,30	0,36	0,27	7,2	6,2	7,6	0,55	0,67	0,52	7,5	5,7	9,2
o/w repair and individual manufacture of clothes and footwear	0,06	0,10	0,03	20,0	27,8	11,1	0,09	0,17	0,06	16,4	25,4	11,5
cultural and educational services	0,09	0,04	0,11	2,2	0,7	3,1	0,09	0,07	0,10	1,2	0,6	1,8
payments for education	0,24	0,64	0,09	5,7	10,9	2,5	0,56	1,02	0,39	7,7	8,7	6,9
payments for medical services	0,15	0,29	0,10	3,6	5,0	2,8	0,39	0,85	0,21	5,3	7,3	3,7
payments for treatment in sanatoria and health resorts, including rest	0,01	0,03	0,01	0,2	0,5	0,3	0,02	0,06	0,01	0,3	0,5	0,2
transport services	1,99	2,35	1,85	47,6	40,2	52,1	3,39	4,32	3,04	46,4	36,9	53,5
communication services	0,08	0,17	0,05	1,9	2,9	1,4	0,30	0,86	0,09	4,1	7,3	1,6
legal services	0,03	0,02	0,04	0,7	0,3	1,1	0,04	0,01	0,05	0,5	0,1	0,9
Taxes, due, and other payments	0,92	2,71	0,25	2,2	4,7	0,7	1,16	3,46	0,32	2,1	4,3	0,7
Other expenditures	5,45	7,47	4,67	13,0	13,1	12,9	4,09	3,61	4,26	7,3	4,5	8,9

Continued

DISTRIBUTION OF HOUSEHOLDS AND POPULATION IN THEM BY PER CAPITA CONSUMER EXPENDITURES in January - September of 2005
(according to sampling household budget survey), in %

	Number of households surveyed	Population in them	Households consisting of:					Households having children below 16	of which households having			
			1 person	2 persons	3 person	4 persons	5 and more persons		1 child	2 children	3 children	4 and more children
Total number	925	5425	24	44	73	137	647	773	158	227	193	195

of which those with monthly per capita expenditures (somon) :

below 10,00	1,08	1,33			1,37		1,40	1,29	1,27	0,88	2,07	1,03
10,01-15,00	3,77	5,15				0,73	5,28	4,65	1,90	3,97	3,63	8,73
15,01-20,00	9,05	10,76		2,27	2,74	5,11	11,49	10,22	8,23	8,81	8,29	15,38
20,01-25,00	14,11	17,27	16,67	2,27	6,85	3,65	18,01	15,52	6,34	11,45	17,62	25,64
25,01-30,00	13,15	14,45	8,33		5,48	7,30	16,46	14,36	8,23	10,57	16,06	22,05
30,01-35,00	12,28	12,47	8,33	9,09	13,70	9,49	13,04	11,90	11,39	13,66	12,44	9,74
35,01-40,00	10,78	10,26		15,91	9,59	11,68	10,72	11,00	12,02	11,45	15,03	5,64
40,01-45,00	8,41	7,66		13,64	9,59	10,22	7,92	8,80	12,02	8,81	9,33	5,64
45,01-50,00	5,71	4,44	12,50	11,36	6,85	8,76	4,19	5,30	8,86	6,17	4,66	2,05
50,01-55,00	4,85	4,24	4,17	6,82	9,59	6,57	3,73	4,40	5,06	7,93	2,07	2,05
55,01-60,00	2,26	1,70	4,17	4,55	2,74	5,84	1,24	2,07	4,43	2,20	1,55	0,51
60,01-65,00	3,45	2,80	8,33	9,09	4,11	6,57	2,17	2,98	6,33	3,97	2,07	
65,01-70,00	3,13	2,42	8,33	2,27	5,48	5,84	2,02	2,45	3,16	2,65	3,10	1,03
70,01-75,00	1,61	1,24		6,82	4,10	2,19	0,93	0,91	2,53	0,88	0,52	
75,01-80,00	1,29	0,96	4,17	2,27	1,37	3,65	0,62	0,65	1,90	0,44		0,51
80,01-85,00	0,97	0,61		4,55	2,74	2,19	0,31	0,78	0,63	1,76	0,52	
85,01-90,00	0,65	0,27	12,50		1,37	0,72	0,16	0,26		0,88		
90,01-95,00	0,43	0,27			1,37	2,19		0,52	1,90	0,44		
95,01 and more	3,02	1,70	12,50	9,09	10,96	7,30	0,31	1,94	3,80	3,08	1,04	

Continued

DISTRIBUTION OF HOUSEHOLDS AND POPULATION IN THEM BY PER CAPITA CONSUMER EXPENDITURES in January-September of 2006

(according to sampling household budget survey), in %

	Number of households surveyed	Population in them	Households consisting of:					Households having children below 16	of which households having			
			1 person	2 persons	3 person	4 persons	5 and more persons		1 child	2 children	3 children	4 and more children
Total number	925	5391	24	47	72	133	649	778	175	221	179	203

of which those with monthly per capita expenditures (somon) :

below 10,00	1,94	2,76					2,77	2,31	0,57	1,36	2,79	4,43
10,01-15,00	3,03	3,60				3,00	3,70	3,60	4,57	4,07	1,12	4,43
15,01-20,00	6,92	8,81			4,17	2,26	8,94	7,97	5,14	4,07	7,82	14,78
20,01-25,00	9,84	12,82	12,50	2,13	4,17	1,50	12,63	10,80	6,86	7,24	9,50	19,21
25,01-30,00	8,97	10,42	8,33	4,25	1,39	3,76	11,25	10,03	8,57	6,79	13,41	11,82
30,01-35,00	7,35	8,40		2,13	2,78	2,26	9,55	8,23	5,71	7,69	9,50	9,85
35,01-40,00	8,65	9,22	4,17	6,38	2,78	3,76	10,63	9,64	6,86	9,05	11,73	10,84
40,01-45,00	9,08	8,68	4,17	6,38	5,55	12,03	9,24	9,77	12,57	9,50	10,06	7,39
45,01-50,00	5,95	5,56		4,26	5,55	8,27	5,86	5,91	6,29	8,14	5,59	3,45
50,01-55,00	5,41	4,95		6,38	2,78	7,52	5,39	5,52	5,71	6,33	7,26	2,96
55,01-60,00	4,00	3,75	4,17		2,78	4,51	4,31	3,60	2,29	5,43	2,79	3,45
60,01-65,00	3,68	3,00	4,17	8,51	5,55	5,26	2,77	3,47	4,57	4,52	2,79	1,97
65,01-70,00	3,68	3,43		2,13	2,78	7,52	3,24	3,47	6,86	0,91	5,02	1,97
70,01-75,00	2,27	1,73		6,38	2,78	3,76	1,70	1,93	3,43	2,26	2,23	
75,01-80,00	2,27	1,24	20,83	8,51	2,78	3,76	0,77	1,41	1,72	3,17	0,56	
80,01-85,00	1,51	1,21	4,17	2,13	2,78	2,26	1,08	1,16	0,57	2,72	0,56	0,49
85,01-90,00	1,62	1,08	12,50		4,17	2,26	0,93	1,03	0,57	2,72	0,56	
90,01-95,00	2,05	1,47	8,33	2,13	5,55	3,76	1,08	1,41	0,57	2,72	1,12	0,99
95,01 and more	11,78	7,87	16,66	38,30	41,66	22,55	4,16	8,74	16,57	11,31	5,59	1,97

APPENDIX 9. PER CAPITA CONSUMPTION OF FOOD IN THE REPUBLIC OF TAJIKISTAN
(according to sampling household budget surveys)

(per month, kg)

	<i>9 months of 2005</i>			<i>9 months of 2006</i>		
	Total	of which:		Total	of which:	
		Urban area	Rural area		Urban area	Rural area
Bread products	12,38	10,04	13,26	12,45	10,29	13,46
Potatoes	2,66	2,47	2,73	2,43	2,32	2,50
Vegetables and melons	10,65	9,37	11,13	10,81	11,40	10,66
Fruits and berries, including dry	3,25	1,63	3,87	3,51	2,30	4,04
Sugar and confectionary	0,83	0,90	0,80	0,87	1,02	0,82
Meat and meat products	0,55	0,68	0,51	0,59	0,80	0,51
Fish products		0,01			0,01	
Milk and dairy products	4,44	2,38	5,21	4,93	3,67	5,49
Eggs (pieces)	2	2	2	2	2	2
Vegetable oil and margarine	0,97	1,02	0,95	1,01	1,03	0,99

**FOOD SECURITY AND POVERTY
INFORMATION BULLETIN
OF THE REPUBLIC OF TAJIKISTAN**

/ Edited by Shabozov M.Sh. - Chairman
of the State Committee on Statistics
of the Republic of Tajikistan
734025 Tajikistan, Dushanbe, Bokhtar Street, 17 /

Editorial board:

Shabozov M.Sh. - Chairman of Editorial Board

Mukhammadieva B.Z., Asoev A.A., Ashurov I.S., Baimatov K.F., Gukasova T.P.,
Abdulloev M.A., Jdanova L.V., Ziaeva M.A., Kislitsina E.A., Turaev B.T.

Responsible for:

- sections of the Bulletin

Vital and Employment Statistics	Kislitsina E.A.	27-80-88
Social Statistics	Budnikova E.V.	27-94-88
Prices, Household Budgets and Poverty Statistics	Turaev B.T.	27-56-28
Finances	Pulatova N.T.	27-98-71
Gross Domestic Product	Ziaeva M.A.	27-98-71
Trade, External Activity	Jdanova L.V.	23-32-48
Agriculture	Abdulloev M.A.	27-81-14
Nature and Environment Statistics	Norov K.	27-82-66

-preparation of main document, systematization of
parts, and design:

Economic Analysis and International
Relations Department
Gukasova T.P.
Tel. 21-23-87
e-mail: stat@tojikiston.com

-publication:

Chief of Central Computer Center
of the State Committee on Statistics
of the Republic of Tajikistan
Baimatov K.F.
Tel: 27-96-09