

**STATE COMMITTEE ON STATISTICS
REPUBLIC OF TAJIKISTAN**

INFORMATION BULLETIN

**FOOD SECURITY AND POVERTY
IF THE REPUBLIC OF TAJIKISTAN**

№ 3 / 2005

Dushanbe - 2005

Statistical service is one of the effective methods for establishing the order and evaluation of prospects of economic agents activity. Under the conditions of market economy, it is not possible to insure the sustainable development without proper accounting, work analysis and resource planning.

In this respect, and in accordance with legislation, all enterprises, organizations, institutions, and all production and non-production subjects, independently of their form of ownership, have to submit all required complete and accurate reports in due time to the statistical bodies. Thereby, statistical recording is to be indispensable, complete and unexceptional on the whole territory of the republic.

Relevant state authorities have to take required actions to bring accounting system into the line with international standards.

E.SH.RAHMONOV

Introduction

In accordance with European Commission Matrix on Policy Reform of Memorandum of Understanding on Food Security Program in the Republic of Tajikistan the decision about preparation and publishing of Quarterly Food Security Bulletin was made to ensure system of reliable operative information and analysis of current food security situation in the Republic of Tajikistan.

“Food security presumes that all people have access, at all time, to sufficient food required for an active and healthy life. Food security also means physical availability of food in sufficient quantities, accessibility of those foodstuffs for households (through the market and other sources, that suppose sufficient purchasing power), as well as consumption of food in quantities required for satisfying of nutritional needs”.

The purpose of the Bulletin is to bring together and systematize available information on food security in Tajikistan; i.e. the availability of food in the republic and outlook for food production, indicators on access to food, food use and utilization. The Bulletin also contains analysis of current food security situation in the Republic.

The base indicators for Food Security Bulletin are production of food, food availability and accessibility, areas under crops, agricultural production and productivity, main climatic conditions, health indicators, water supply, prices, and quantitative indicators reflecting situation on food market.

The Appendices to the Bulletin show indicators of Poverty Reduction Strategy Paper for 2003, 2004, first quarter, first half and nine months of 2005, detailed information on the access to food of various socio-economic groups of the population for 2003, 2004, and first half of 2005, as well as estimated data on food balance for the first, second, third and fourth quarters of 2004 and the first, second and third quarters of 2005.

The presented Quarterly Food Security Information Bulletin of Tajikistan was prepared by State Committee on Statistics with participation of key Ministries and Departments as well as non-government organizations (Ministry of Finance, Ministry of Health Care, Ministry of Labor and Social Protection of Population, Ministry of Education, Ministry of Communication, Ministry of Transport, Social Protection Fund, Hydrometeorological Agency under the Committee for Nature and Forestry Protection of the Republic of

Tajikistan, etc.). The publication is prepared with technical and financial support of European Commission in the Republic of Tajikistan.

The publication is intended both for specialists and all interested persons.

All recommendations, suggestions and remarks related to the content of the Bulletin should be addressed to the State Committee on Statistics of the Republic of Tajikistan at the following address:

17 Bokhtar Street Dushanbe
734025 Tajikistan
Tel. (992 372) 212387, Fax (992 372) 214375
email: stat@tojikiston.com
<http://www.stat.tj>

CONTENTS

Introduction	123
Overview	127
CHAPTER I. SOCIO-ECONOMIC INDICATORS	129
1.1. Gross Domestic Product.....	129
1.2. Price and Tariff Indices.....	130
1.3. Foreign trade	131
1.4. Labor market	131
CHAPTER II. AVAILABILITY OF FOOD	132
2.1. Growth in agricultural production.....	132
2.1.1 Outlook of agricultural production	132
2.1.2. Livestock production	136
2.2. Producer prices.....	137
2.3. Trade in basic foodstuffs.....	140
2.4. Availability of food per capita	141
CHAPTER III. ACCESS TO FOOD.....	142
3.1. Retail prices.....	142
3.2. Incomes and Expenditures	143
3.2.1. Incomes.....	144
3.2.2. Expenditures	144
3.3. Social protection and the vulnerable groups of population	146
3.3.1 Social protection in the Republic of Tajikistan	146
3.4. Food insecurity: households with spend more than 70% of expenditures on food	147
CHAPTER IV. USE AND UTILIZATION	148
4.1. Consumption of food products by the population.....	148
4.2. Food security indicators not related to income	149
4.2.1. Population morbidity.....	149
METHODOLOGY	151
Glossary	153
List of abbreviations	153

Appendix 1. Review of hydro-meteorological conditions of the Republic of Tajikistan during third quarter of 2004.....	154
Meteorological conditions	154
Hydrological conditions.....	155
Review of snow slides and mudflows.....	156
Appendix 2 PRSP Indicators in the Republic of Tajikistan.	157
Appendix 3. Changes in average wholesale prices in Tajikistan	162
Appendix 4. Changes in average consumer prices in Tajikistan.....	163
Appendix 5. Food balance	165
Appendix 6. Money incomes, expenditures and consumption of households, by decile population groups in the Republic of Tajikistan in 2002-2003	169
Appendix 7. Distribution of households and population in them by per capita income in the Republic of Tajikistan.....	170
Appendix 8. Structure of average monthly expenditures of population in the Republic of Tajikistan	171
Appendix 9. Per capita consumption of food in the republic of Tajikistan	175

OVERVIEW

Growth of real Gross Domestic Product (GDP) was positive and amounted to 5.1% in January-September 2005 as compared to January-September 2004. The growth of GDP was determined by growth in industrial production (8.5%), gross agricultural production (3.1%), retail trade turnover (11.6%), and paid services to population (11.5%).

Growth in gross plant production during nine months of the current year as compared to growth in the previous year was insignificant (1.7%). The low growth was caused by reduction of raw cotton production (41.2% as compared to the corresponding period of the previous year). At the same time, production of some agricultural products increased as follows: grain - by 14.6%, potatoes - by 17.1%, vegetables - by 10.6%, melons - by 28.6%, fruits - by 16.8%, and grapes - by 16.4%. During this period, gross animal production increased by 6.8% due to increase in production of meat (6.7%), milk (5.5%), and eggs (28.9%). In general, during the third quarter of 2005, the weather conditions were favorable for agricultural production, except for first half of July, when mud floods took place in many rivers of the republic and caused significant damage to Tajikistan's economy. As a result, 40 cattle farms, and 5 thsd. hectares of agricultural crops were destroyed. First and beginning of second decade of August were characterized by cool weather. Second and third decades of the month were characterized by settled hot weather, with average daily air temperature in valleys by 1-3 degrees above the norm. Average monthly water discharge of the most rivers was below and near the normal (70-120%). September was characterized by dry warm temperature. At the same time, due to unfavorable spring weather conditions and late maturing of agricultural crops, fall-ploughing was carried out by 15 days later than in the last year on the area of 2617 hectares (63% of the level of the previous year).

As compared to the corresponding period of the previous year, amount of sowed seeds decreased by 12706 (or 54%) tons for cereal crop and leguminous, of which by 12404 tons (or 55%) for wheat.

Prices of wheat began to decline in the second and third quarters of 2005 as compared to the first quarter. However, in the third quarter of 2005 in comparison with the third quarter of 2004 both wholesale and retail prices for wheat increased. During nine months of 2005, imports of wheat increased by 3.8 times as compared to the similar period of the previous year.

Usually, in second quarter of a year prices of potatoes come down, but in the second quarter of 2005, they increased significantly due to bad weather conditions and late

maturing. In the third quarter of 2005 the price of potatoes remained on the level of the second quarter.

Share of food products in the total value of exports of Tajikistan accounted for 2.9% and 3.1% in January-September of 2004 and 2005, respectively. The share of food products in total volume of imports was higher by more than 3 times and accounted for 8.4% and 11.7% during nine months of 2004 and 2005, respectively. Imports of food products in January-September of 2005 increased by 1.5 times as compared to January-September of 2004.

Consumer prices for food products increased by 6.8% during nine months of 2005. The highest increase of prices was registered for rice, carrot, potatoes, cabbage, granulated sugar, beef, evaporated milk formula, pearl barley, spaghetti, etc. At the same time, the highest decrease of prices was registered for onion, eggs, light wheat flour, cotton oil, and some other products. Monthly inflation rate in consumer's sector made up 0.63% (against 0.48% in the corresponding period of the previous year).

In real terms (deflated by the CPI) cash incomes increased by 19.9% in the first half of 2005, the gap between the average incomes of the highest and the lowest income deciles remains significant (11.3 times). The gap between expenditures of the highest and the lowest deciles in the first half of 2005 decreased to 5.8 times from 6.0 times in the first half of 2004.

In all regions of Tajikistan consumption of bread and bread products exceeds approved medical norm by 16%; in total structure of household's expenditures for food, bread and bread products occupies the first place (28.2%). Pensioners spend about 80% of total consumer expenditures for food.

Amount of compensations paid to low-income families with children studying in secondary schools during nine months of 2005 reached 7645.6 thsd.somoni (104.5% of plan). Compensations were paid to 406260 pupils (25% of all pupils).

In the third quarter of 2005, incidence of infection diseases among population increased by 16.1%, and by 9.4% among children of 0-14 years old. Decrease in incidence of acute enteric infections by 15% was observed during this period, while among children of 0-14 years old this indicator increased by 20.6%. At the same time, number of cases of bacterial dysentery increased by 1.7 times (by 28.5 times among children of 0-14 years old). The most adverse months were July and August of 2005. In September of the current year, incidence of acute enteric infections decreased almost by 50%.

CHAPTER 1. SOCIO-ECONOMIC INDICATORS

The mentioned below socio-economic indicators depict overall economic situation in the country, required for analysis of food security situation.

1.1 GROSS DOMESTIC PRODUCT

According to preliminary estimates, growth of real Gross Domestic Product (GDP) was positive and amounted to 5.1% in January-September 2005 as compared to January-September 2004. The biggest impact was due to the increase of production in agriculture, industry and trade.

Table 1: Main socio-economic indicators

	2003	2004	9 months of 2004	9 months of 2005
Population (million)	6,6	6,8	6,7	6,9
Nominal GDP (mln.somoni)	4757,8	6157,5	4240,2	5049,2
of which (in %):				
agriculture	25,2	21,6	21,2	20,3
industry	20,9	19,6	20,7	18,3
services	38,6	42,3	43,1	46,0
GDP per capita (somoni)	724,0	910,0	x	x
GDP growth , in % to the corresponding period of the previous year	10,2	10,6	112,6	105,1
State budget deficit / surplus (as percentage of GDP)	1,1	-0,2	-0,3	-0,8
Consumer Price Indices (CPI), in % to the corresponding period of the previous year	117,1	106,8	106,4	107,7
Price Indices for foodstuffs	115,8	105,0	104,2	108,8
Price indices for services	140,8	117,3	118,8	109,6
Exchange rate of somoni (per 1 US Dollar)	3,0607	2,9711	2,9517	3,0934
Officially registered unemployment rate	2,4	2,2	2,2	2,1

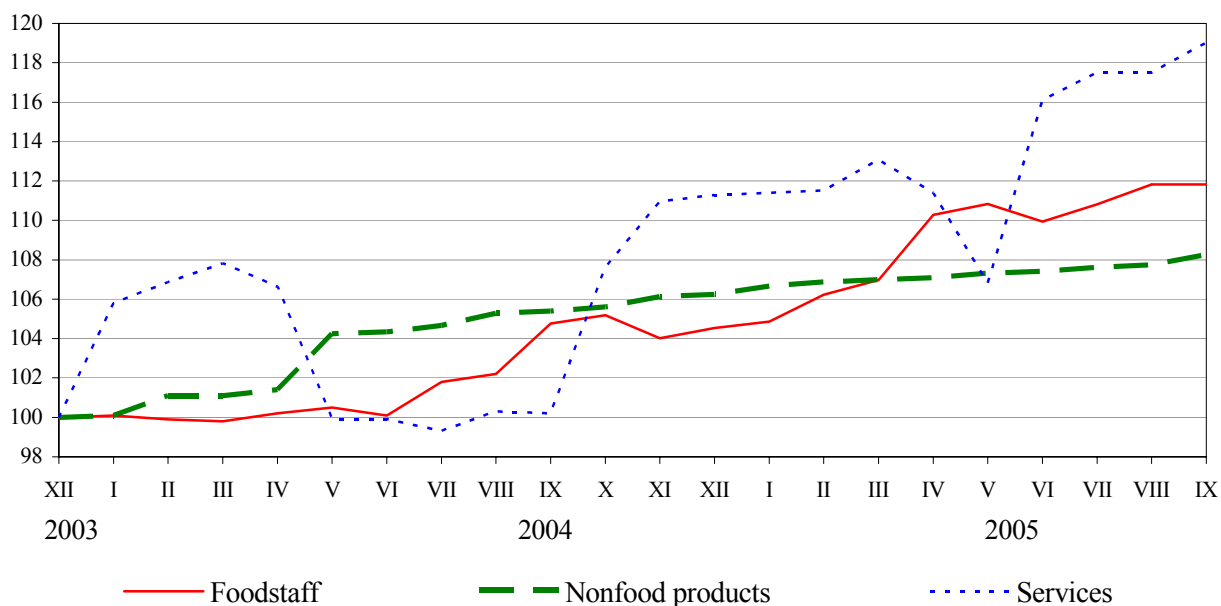
	2003	2004	9 months of 2004	9 months of 2005
Number of registered unemployed, thsd.persons	46,9	41,6	42,2	41,8
in % to the corresponding period of the previous year	98,9	88,7	90,0	99,1
Monthly average wages and salaries (somon)	44,61	61,81	55,95	84,10
in % to the corresponding period of the previous year	137,0	138,6	136,6	150,3
Trade balance (mln.USD)	-83,1	-460,3	-206,3	-302,6
Share of food in total imports, %	9,2	9,4	8,4	11,7
Share of food in total exports, %	3,3	3,0	2,9	3,1

Source: State Committee on Statistics

1.2. Price and Tariff Indices

During the period from beginning of 2005, consumer price index constituted 105.7%, of which for foodstuff - 106.8%, non-food products - 101.9%, and paid services to population - 107.0%. Monthly inflation rate in consumer's sector made up 0.63% (against 0.48% in the corresponding period of the previous year).

Graph 1: Consumer price indices for foodstuff, non-food products and paid services (at the end of each month, in % to December 2003)



During nine months of 2005 the increase of prices of foods outpaced those of non-foods.

More detailed information on prices of food is available in the section 3 “Access to food”.

1.3 Foreign trade

During 9 months of 2005, foreign trade turnover of the Republic of Tajikistan was valued at 1589.3 million USD or 102.3% as compared to January-September of 2004 (increase was 35.8 million USD. Trade balance was negative (-302.6 mln.USD). Foreign trade turnover with CIS countries accounts for 711.4 mln.USD or 44.7%, with other countries of the world - 877.9 mln.USD or 55.2%. The deficit of trade balance with CIS countries constituted -492.7 million USD; trade balance with other countries of the world was positive 190.1 million USD.

Main export goods were aluminum, cotton, electric power, precious and semiprecious stones and metals.

Main import goods were chemical industry products, electric power, machines and equipment as well as plant products, such as wheat, flour, sugar and vegetable oil.

1.4 Labor market

According to the data of the Ministry of Labor and Social Protection of the Republic of Tajikistan, the number of unemployed active (working-age) citizens, registered in employment offices as looking for a job, as at the end of September 2005 amounted to 83.6 thsd.persons, and decreased by 11.5% as compared to the similar date of last year. In January – September 2005, 46.5 thousand persons were registered in employment offices as looking for a job, and a total of 17.5 thousand persons were provided with jobs.

As at the end of September 2005, the number of vacancies, offered by enterprises made up 16.7 thousand. Thus, there were 4 candidates for each vacancy.

Among all persons registered as looking for a job, 41.8 thousand people were granted the official status of unemployed as at the end of September 2005.

During nine months of 2005, 3.9 thousand officially registered unemployed were offered professional training. 16.1 thousand people were sent to public paid works. The share of people registered as unemployed receiving unemployment benefit accounts for 6.5% (2.7 thsd.persons).

CHAPTER II. AVAILABILITY OF FOOD

Availability refers to the physical presence of food as a result of domestic production or market operations. On country level availability of food is determined by combination of food stocks, commercial imports, food aid and domestic production. The availability is also determined by the following elements: weather conditions, crop yield, livestock and productivity, producer prices for food, food prices in neighboring countries, as well as national policy defining production, trade, distribution and pricing.

2.1. Growth in agricultural production

The value of gross agricultural output in January-September 2005 in farms of all categories was 1871947 thsd.somoni (at current prices) which is higher by 3.1% than the output at the corresponding period of the previous year, of which plant products - 1348991 thsd.somoni or higher by 1.7% as compared to the corresponding period of the previous year; and animal products - 522956 thsd.somoni or higher by 6.8%.

The largest share in gross agricultural production belongs to Khatlon (48.6%) and Sogd (26.2%) Oblasts.

2.1.1. Outlook for agricultural production Climate influence on crop production

In **July** 2005, the average monthly air temperature throughout the republic was above the normal by 0.5 degrees. The fall-outs of various intensity throughout the republic were registered during 20 days of the month, and 12-15 days in Soghd Oblast and regions of republican subordination. In the eastern part of GBAO precipitations were registered during 9 days. High water content was observed on the rivers of the republic during **July**. Monthly water discharge of the most rivers of the republic was near the norm (99-170%). As compared to the similar period of the previous year, water content of the rivers was within and above last year's volumes (92-170%).

First and beginning of second decade of **August** were characterized by cool weather. Average daily air temperature during this period was below the norm by 1.5-5 degrees. Second and third decades of the month were characterized by settled hot weather, with average daily air temperature in valleys by 1-3 degrees above the norm. Average monthly water discharge of the most rivers was below and near the normal (70-120%). As compared to the similar period of the previous year, water content of the rivers was below last year's volumes (10-20%).

September was characterized by dry warm temperature. The average monthly air temperature in most regions of the republic was within the normal, and only in some regions of GBAO it was below the norm by 1 degree: 19-24 degrees in valleys, 12-19 degrees in mountains, and 4-9 degrees in high mountain areas.

Precipitations were not observed during the most part of the month, and only on 21-23 September rains were registered in some regions of the republic.

The monthly amount of precipitations throughout the republic was 4-15 mm (below the norm), and it was above the norm in Gissar valley and Shaimak. During September, the gradual decrease of water content was observed in the rivers of the republic. Only in second and third decades of month, gradual increase of water content was registered in Sirdarya river.

No avalanches were registered and forecasted during the period **from July to September**. Mudflows were not observed due to lack of precipitations. However, mud floods were registered on many rivers of the republic in the first half of **July**, that caused significant damage to Tajikistan's economy. As a result, 40 cattle farms, and 5 thsd. hectares of agricultural crops were destroyed.

Table 2: Water reservoirs as of 30 September 2005

<i>Water reservoirs</i>	<i>Changes during the month</i>	<i>Volume of water in 2005</i>		<i>Volume of water in 2004</i>	
	<i>mln. cubic meters</i>	<i>mln. cubic meters</i>	<i>in % to total capacity</i>	<i>mln. cubic meters</i>	<i>in % to total capacity</i>
Kayrakkum	+0,016	1467	35,3	2030	48,8
Nurek	-0,038	10518	92,9	10485	92,6

The weather reports prepared by the Hydrometeorological Agency of the Republic of Tajikistan for the third quarter of 2005 are attached at Appendix 1.

Table 3: Sown area, gross harvest and crop yield

	2003	2004	2004	2005
			9 months	
Sown area (thsd.ha)	886,9	905,6	896,4	900,4
Winter crops	187,2	163,7	163,4	181,3
Cereal crops	187,2	163,7	151,8	181,3
wheat	177,1	152,1	11,4	167,7
barley	9,9	11,4	733,0	13,5
Spring crops	699,7	741,9	733,0	719,1
Cereal crops	217,4	240,1	231,6	214,4
wheat	157,8	170,7	169,1	150,3
barley	27,6	37,5	31,6	31,1
Industrial crops	319,1	333,1	333,1	325,7
Potatoe	26,0	28,6	28,5	27,5
Vegetables	30,2	32,0	32,2	33,5
Melons	10,7	10,6	10,4	9,2
Gross harvest, thsd.tons				
Grain (weight after processing)	884,4	891,6	660,6	757,2
Barley (weight after processing)	50,5	63,4	37,7	53,8
Maize for grain	94,8	113,0	70,7	96,2
Potatoe	473,3	527,2	265,2	310,5
Vegetables	583,0	681,5	419,2	463,4
Melons	138,5	156,4	111,2	142,9
Crop yield, centners / ha a¹				
Cereal crops	19,9	19,8	15,9	16,7
wheat	19,8	19,9	16,8	17,3
barley	14,9	14,6		
maize for grain	37,7	46,8	35,1	35,6
Potatoe	177,0	183,0	187,0	192,0
Vegetables	162,0	186,0	193,0	182,0
Melons	120,0	136,0	129,0	135,0

¹ public sector and dehqan farms

Source: State Committee on Statistics

The share of areas under cereals and leguminous cultures accounts for 44.0% of all sown areas, under technical cultures - 37.0%, of which under cotton - 32.0%, under feed crops

- 12.0%, under potatoes, vegetables and melons - 10.0%.

As compared to similar period of the previous year, production of some agricultural products increased as follows: grain - by 96593 tons (or 14.6%), potatoes - by 45349 tons (or 17.1%), vegetables - by 44400 tons (or 10.6%), melons - by 31767 tons (or 28.6%), fruits - by 11903 tons (or 16.8%), and grapes - by 6598 tons (or 16.4%).

As of 1 October 2005, agricultural enterprises and dehkan farms have harvested grain and legumes (excluding maize) from the area of 239.9 thsd.ha and it is more by 28.9 thsd.ha as compared to the similar period of the previous year. From the harvested area 393.3 thsd.tons of grain were threshed (from the area of 235.1 thsd.ha) with total yied of 16.7 centners from one hectare.

Maize for grain was harvested from the area of 3458 ha (more by 23% as compared to the corresponding period of the previous year). 9986 tons of maize for grain were harvested with average yield of 35.6 centners for one hectare.

73.8 tons of potatoes were harvested from the area of 3849 ha (which is more by 8.8 thsd.tons as compared to the similar period of the previous year). Yield of potatoes was 192 centners from one hectare (more by 5% as compared to the similar period of the previous year). 136.7 thsd.tons of vegetables were harvested from the area of 7520 ha, with average yild of 182 centners/ha (by 11 centners/ha higher then in corresponding period of the previous year). 69.2 thsd.tons of melons were harvested with average yield of 135 centners/ha. During the reporting period fruits and grapes harvest made us 21.5 thsd tones and 17.1 thsd.tons, respectively, dropping by 8% and 26% as compared to the corresponding period of the previous year.

Winter cereal crops were planted by agricultural enterprises and dehkan farms on the area of 4081 hectares (3% of planned area) or 95% as compared to the similar period of the previous year.

Due to unfavorable spring weather conditions and late maturing of agricultural crops, fall-ploughing was carried out by 15 days later than in the last year on the area of 2617 hectares (63% of the level of the previous year).

As of 1 October 2005, winter agricultural crops were planted by agricultural enterprises and dehkan farms on the area of 226 hectares, which is more by 64 hectares or 40% as compared to the similar date of last year; of them 172 ha are sown to vegetables and 54 ha are sown to perennial naked grasses.

As of 1 October 2005, agricultural enterprises and dehkan farms sowed 10980 tons of seeds of cereal crop and leguminous, including 10103 tons of wheat seeds, 122 tons of maize seeds, and 877 tons of seeds of other cereal crops. Besides, 67 tons of seeds of cereal crop and leguminous were put to seed bank.

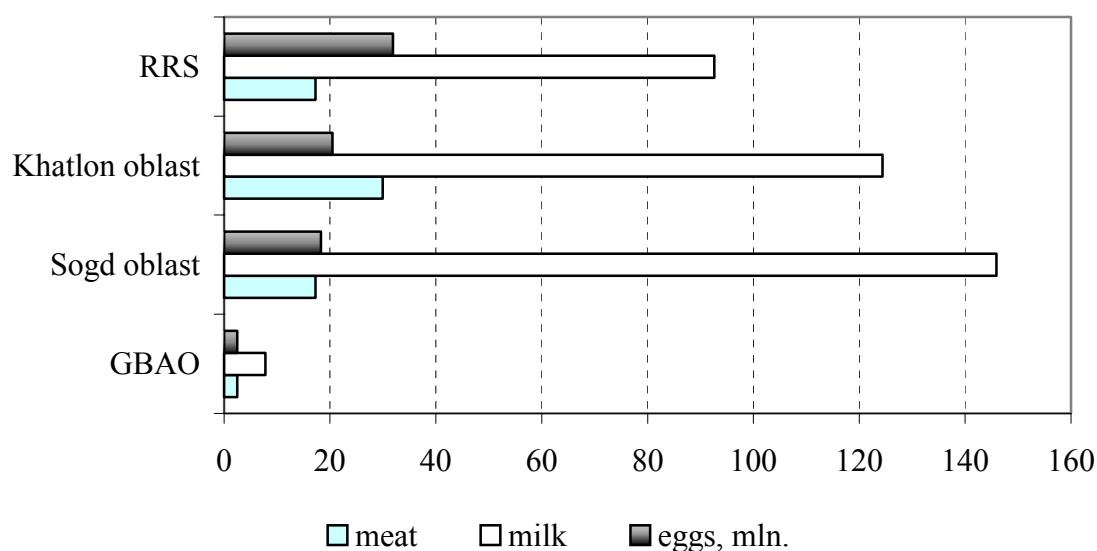
As compared to the corresponding period of the previous year, amount of sowed seeds decreased by 12706 (or 54%) tons for cereal crop and leguminous, of which by 12404 tons (or 55%) for wheat .

2.1.3. Livestock production

As of 1 October 2005, the number of cattle in farms of all categories increased by 6.3% as compared to the similar date of the previous year; the number of sheep and goats increased by 11.6%, poultry – by 9.9%. The increase in number of cattle is observed in farms of Sogd Oblast (by 6%), Khatlon Oblast (by 7.2%), regions of republican subordination (by 6.5%). The increase in number of poultry is observed in farms of Sogd Oblast (by 12.2%), Khatlon Oblast (by 16.9%),

During nine months of 2005, farms of all categories produced 67.1 thsd.tons of meat (live weight) or 106.7% as compared to the corresponding period of the previous year. They have also produced 360.7 thsd.tons of milk (105.5%), 73.2 mln.pieces of eggs (128.9%).

Graph 3. Production of main live-stock products in all categories of farms in January - September 2005, thsd. tons



During January-September of 2005 the average milk yield per cow was 1242 kg increasing by 2% as compared to the previous year.

In average, 49 calves were received from every 100 female cows during nine months of 2005.

For the reporting period, the average output of eggs from 1 laying hen reached 134 eggs (or 109% of the level of 2004).

Table 4: Main indicators of livestock production in the Republic of Tajikistan

	2003	2004	9 months	
			2004	2005
Production, thsd.tons				
Meat (slaughtered)	44,6	48,2	31,4	33,5
Milk	459,2	489,5	341,9	360,7
Eggs, mln.	57,4	77,7	57,2	73,2
Productivity ¹				
The average milk yield per cow, kg	1592	1573	1215	1242
The average output of eggs per laying hen, pieces	112	261	123	134

1- public sector and dehkan farms

Source: State Committee on Statistics

2.2. Producer prices

Table 5: Changes in producer prices

(somoni / kg)

	2003				2004				2005		
	<i>I q.</i>	<i>II q.</i>	<i>III q.</i>	<i>IV q.</i>	<i>I q.</i>	<i>II q.</i>	<i>III q.</i>	<i>IV q.</i>	<i>I q.</i>	<i>II q.</i>	<i>III q.</i>
Wheat	0,23	0,27	0,20	0,22	0,32	0,33	0,28	0,33	0,42	0,36	0,31
Milk	0,25	0,25	0,21	0,21	0,32	0,32	0,31	0,29	0,42	0,41	0,41
Potatoes	0,26	0,27	0,19	0,20	0,18	0,27	0,17	0,18	0,19	0,19	0,29

Source: State Committee on Statistics

In spite of the growth of wheat imports by 1.5 times during the first quarter of 2005, prices of wheat increased by 31.3% (wholesale prices) and 17.3% (retail prices) as compared to the first quarter of 2004; then, in the second and third quarters of 2005 they began to decline. However, in the third quarter of 2005 in comparison with the third quarter of

2004 both wholesale and retail prices for wheat increased. During nine months of 2005, imports of wheat increased by 3.8 times as compared to the similar period of the previous year (See Table 5 and Graph 4).

Graph 4. Trends in producer and retail prices of wheat (by quarters)



In 2005, the average prices of milk continue to fluctuate seasonally. However, during last three quarters prices of milk practically didn't change after price surge in the fourth quarter of 2004. Retail price of milk in the third quarter of 2005 was 0.82 somoni, and wholesale price was 0.41 somoni (See Graph 5).

Graph 5. Trends in producer and retail prices of milk (by quarters)

(somon/kg)



Graph 6. Trends in producer and retail prices of potatoes

(somon/kg)



The given graphs show that change in retail prices is higher than in producer's ones. This trend is specific for all types of agricultural products. Usually, in second quarter of a year prices of potatoes come down, but in the second quarter of 2005, they increased significantly due to bad weather conditions and late maturing. In the third quarter of 2005 the price of potatoes remained on the level of the second quarter. Wholesale prices

increased only in the third quarter of 2005 (See Appendices 3 and 4).

2.3. Trade in basic foodstuffs

Share of food products in the total value of exports of Tajikistan accounted for 2.9% and 3.1% in January-September of 2004 and 2005, respectively. The share of food products in total volume of imports was higher by more than 3 times and accounted for 8.4% and 11.7% during nine months of 2004 and 2005, respectively.

The major food products imported to the Republic of Tajikistan were wheat and flour (the greatest share), as well as sugar, vegetable oil, tea, meat, flour products (macaroni, noodles, bread, cakes, pastries), vegetables, fruits and others.

Imports of food products in January-September of 2005 increased by 1.5 times as compared to January-September of 2004, of which imports of vegetables increased by 1.5 times, milk and dairy products - by 1.9 times, spaghetti, noodles and other pasta - by 44%. Imports of wheat increased by 3.8 times, amounting to 187.7 thsd.tons (against 44 thsd.tons in January-September of 2004), and imports of flour increased by 1.4 times amounting to 238.1 thsd.tons (against 147.1 thsd.tons during nine months of 2004).

Table 6: Exports and Imports of basic food products

(thsd.tons)

	9 months			
	2004	2005	2004	2005
	Exports		Imports	
<i>Food products</i>	96	89	341	606
of which				
wheat	-	-	44,0	187,7
flour	-	-	147,1	238,1
sugar	-	0,0	67,9	80,5
spaghetti, noodles, elbow and other products	-	-	4,6	5,5
vegetable oil	-	0,0	24,3	32,4
milk and dairy products	0,1	0,0	0,7	1,1
meat and meat products	-	-	4,5	7,6
eggs	-	-	1,8	2,8
tea	-	0,0	4,4	4,8
Vegetables ¹	43,3	28,4	0,0	0,2
of them onion	39,0	27,4	0,1	-
fruits and berries - total ¹	5,1	5,4	4,0	2,3
products received by processing of vegetables and fruits ¹	31,8	34,5	-	0,7
potatoes	0,1	0,2	0,6	-
Share of food products in total volume, %	2,9	3,1	8,4	11,7

¹ – the structure was adjusted

2.4. Availability of food per capita

The availability of food per capita is calculated using a food balance. A food balance shows for each basic food commodity, the total physical availability and utilization of that foodstuff over a given period of time, usually 1 year. **Total physical availability** is the sum of stocks at the beginning of the period, production and imports of that commodity in a given period of time. **Total utilization** covers use for human consumption + use as animal seed + seed + losses + exports + stocks at the end of the period. In any one period, the availability and utilization of the same commodity must balance. Drawn up over a succession of years, food balances usually reveal a trend in total availability, imports, exports, and the availability of food for human consumption and for feed use. Dividing the annual amount of food available for human consumption by the population gives a key indicator of availability: the average availability of food per capita per year. This measure of food availability is a national average, which takes no account of households' access (i.e. ability to produce, purchase or otherwise obtain) to food.

Table 7: Developments in Per Capita Availability of Basic Foodstuffs

(per capita, kg / month)

	2003	2004	1 half of 2004	1 half of 2005
Bread products (expressed in grain)	13,1	13,0	12,6	12,6
Potatoes	2,5	2,9	3,0	2,7
Vegetables and melons	6,5	6,4	6,1	5,4
Fruits and berries	2,3	3,8	1,4	1,6
Sugar and confectionery items	0,8	0,8	0,8	0,8
Meat and meat products	0,6	0,6	0,5	0,5
Milk and dairy products	4,2	4,0	4,6	4,8
Eggs (pieces)	2	2	2	3
Vegetable oil	0,9	1,0	0,9	1,0
Fish and fish products	0,01	0,01	0,1	0,0

Source: Household budget survey

The analysis of food balances shows that food availability remains stable during last three years (See Table 7)

More detailed information is available in Appendix 5 “Food balance”.

CHAPTER III. ACCESS TO FOOD

Access to food refers to the ability of households to obtain adequate safe and appropriate foods to meet their needs for a healthy and active life. Access can be through production for own consumption, market purchases or donations / transfers.

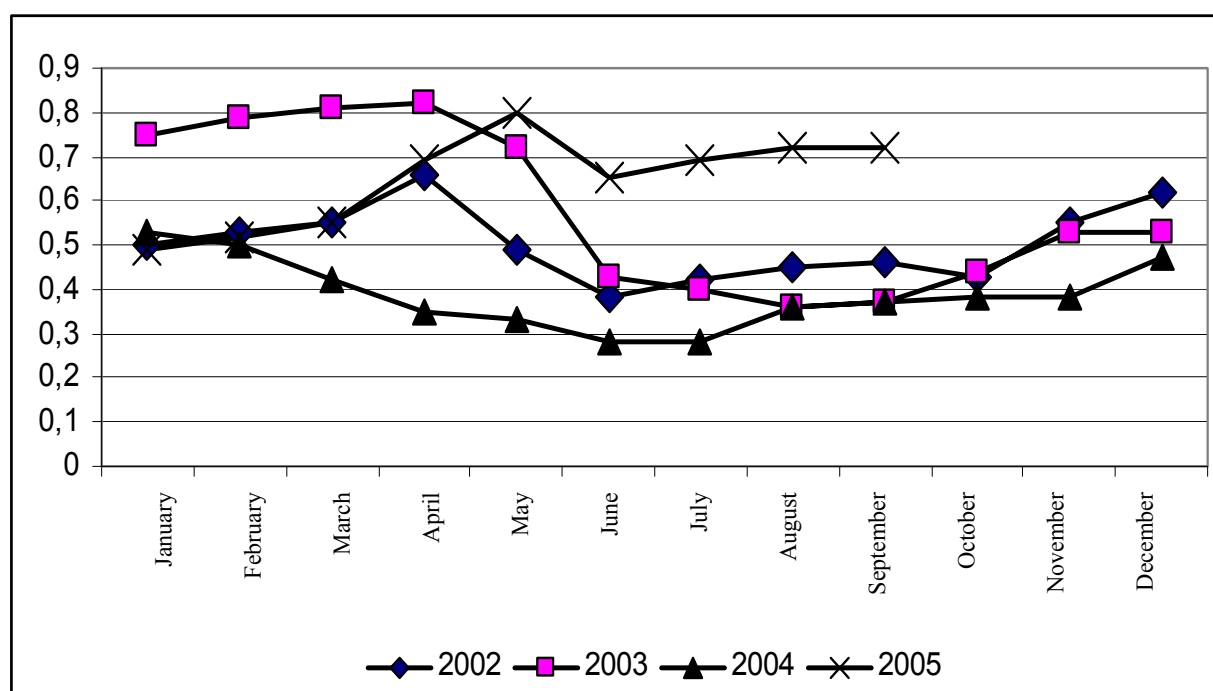
3.1. Retail prices

In the third quarter of 2005, the retail prices of most basic foodstuffs (except for flour, wheat and onion) increased significantly as compared to the second quarter of 2005 (See Appendix 4).

From the beginning of 2005 the highest increase of prices was registered for rice (69.5%), carrot (56.2%), potatoes (51.2%), cabbage (44.8%), granulated sugar (11.1%), pease (9.2%), beef (7.3%), evaporated milk formula (6.6%), pearly barley (4.3%), spaghetti (3.7%), live fish (3.4%), condensed milk (2.4%), mutton (2.2%).

At the same time, the highest decrease of prices was registered for onion (35.3%), apples (6.1%), eggs (3.9%), and light wheat flour (3.0%), cotton oil (2.7%), and buckwheat (1.9%).

Graphs 7: Average monthly retail prices for potatoes (somon / kg)

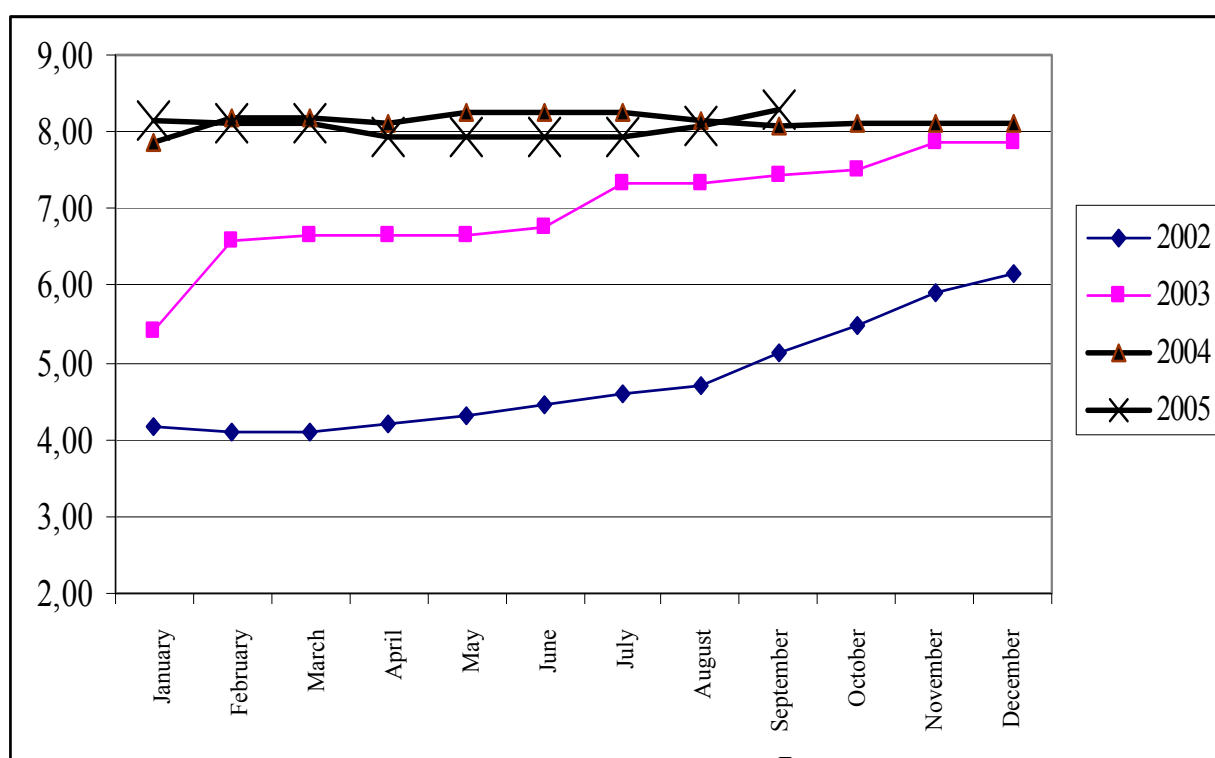


Potatoes. Retail prices of potatoes are subject to seasonal fluctuations and also to fluctuations in supply and demand. The highest seasonal price is normally recorded in the second quarter of each year, prior to the first new harvest. During the period from January to March 2005, the prices of potatoes increased by 15.8% (and amounted to 0.52 somoni/kg), during the period from March to June they increased by 18% (0.71 somoni/kg), and during July-September - remained on the level of June (0.71 somoni/kg).

Flour. In 2004 prices of flour remained stable - 1.00-1.02 somoni/kg. And this trend continued to remain in the first and second quarters of 2005 (1.01 somoni/kg). In the third quarter, the price of flour slightly decreases and amounted to 0.99 somoni/kg.

Beef and other kinds of meat. In March 2005 the prices of *beef* decreased by 1% as compared to the previous month and constituted 6.58 somoni per kilogram. In June, the prices increased by 1.5% as compared to May 2005 and amounted to 6.68 somoni/kg. In September the price of beef increased significantly as compared to June and reached 7.16 somoni/kg. The average price of *mutton* was 8.12 somoni/kg in the first quarter of 2005. In the second quarter it decreased and was 7.93 somoni/kg, and in the third quarter the price of mutton increased up to level of the first quarter - 8.11 somoni/kg.

Graph 8: Average monthly retail prices for mutton (somon / kg)



3.2. Incomes and expenditures

The source of information on household incomes and expenditures is the Household Budget Survey which is conducted on the basis of a monthly survey of 925 households and is comprised of the following: demographic information on the composition of the family, housing and infrastructure, volume of consumption in the family including domestically manufactured items, economic activity in both agricultural and non-agricultural sectors.

3.2.1. Incomes

In 2004 cash incomes and salary (including individual labor activity) of the population in nominal terms increased by 25.6% and on average constituted 33.75 somoni in a month per capita. In the first half of 2005, cash incomes and salary in nominal terms increased by 29.1% and amounted to 37.35 somoni in a month per capita. In real terms (deflated by the CPI) cash incomes increased by 17.6% in 2004, and by 19.9% in the first half of 2005 (See Table 8).

Table 8: Trends in population incomes and expenditures

	2003	2004	1 st half of 2004	1 st half of 2005
Average per capita money incomes (somoni / month)	26,88	33,75	28,93	37,35
Growth in real incomes (%)	117,7	117,6	116,6	119,9
Average nominal salary	44,61	61,81	53,23	81,57
Growth in real salary (%)	117,2	129,8	129,9	143,0
Average per capita money expenditures (somoni / month)	26,17	32,93	29,01	37,73
Growth in real expenditures (%)	115,0	117,8	117,3	120,8

Source: Household Budget Survey and current statistical data

In the first half of 2005, the most important sources of cash incomes of households continue to remain labor incomes - 59.5% and receipts from sales of agricultural products - 15.1%. In the first half of 2005, the gap between the average incomes of the highest and the lowest income deciles amounted to 11.3 times.

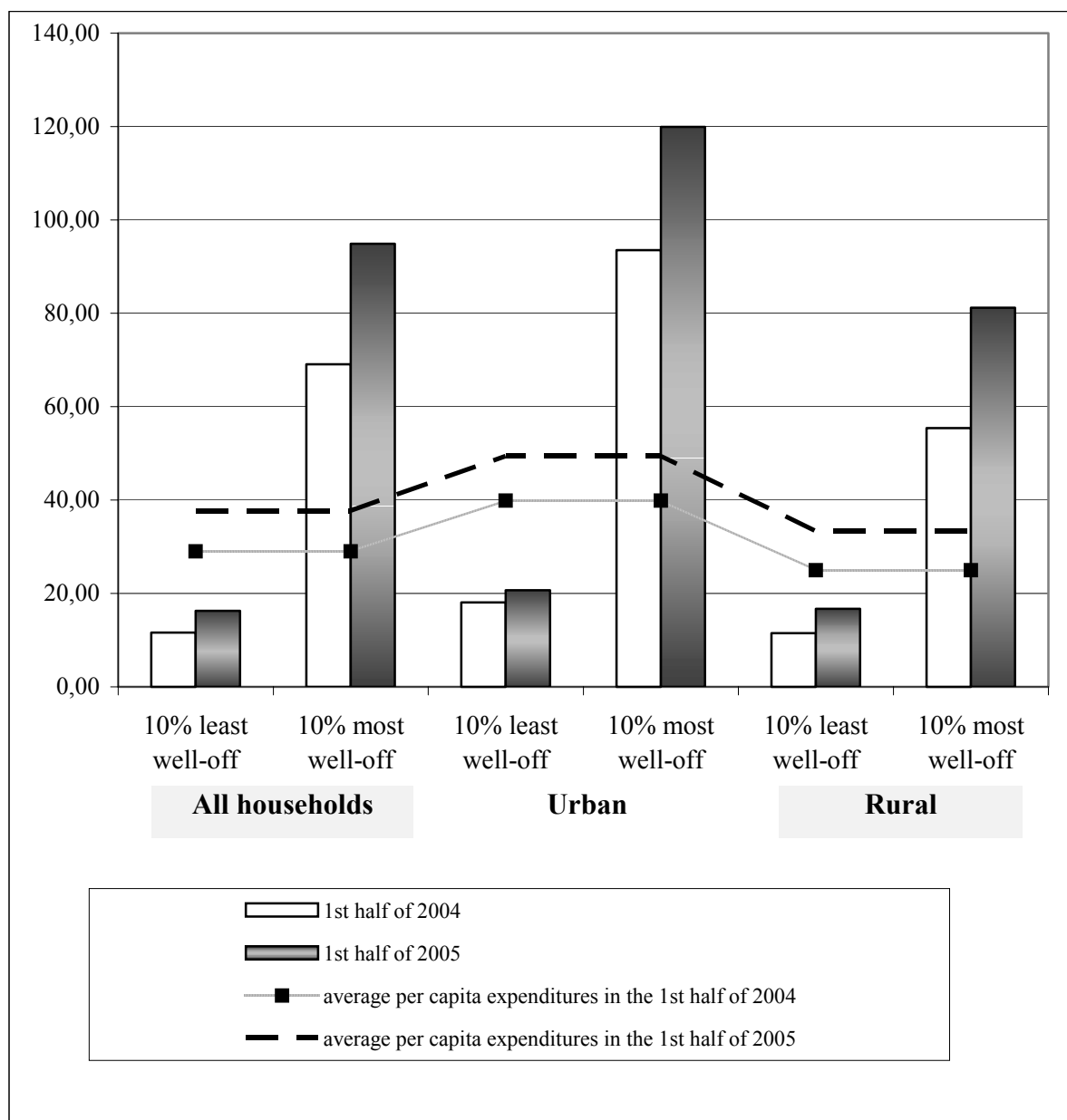
As of the end of September 2005, total arrears in salary payments for the republic made up 29.1 mln.somoni.

3.2.2. Expenditures

In 2004, the average expenditures of the population also rose in nominal and real terms due to higher real incomes and stabilization of prices on consumer goods and services. In the first half of 2005, average expenditures of population have risen mainly due to increase in prices (see Appendix 10 and Graph 9).

In contrast to the previous year, the gap between expenditures of the highest and the lowest deciles decreased from 6.1 times in 2003 to 5.5 times in 2004, and in the first half of 2005, the gap decreased to 5.8 times from 6.0 times in the first half of 2004.

Graph 9: Growth of average per capita expenditures, by decile groups of the population in the first half of 2004 and 2005



3.3. Social protection and the vulnerable groups of population.

3.3.1 Social protection in the Republic of Tajikistan

At present time state social protection is carried out through provision of state benefits (benefits to poor families and social allowances), subsidies to different categories of residents.

According to the data of Fund on Social Protection of Population of the Republic of Tajikistan, the amount of actually paid lump-sum birth benefits increased by 210% times in the third quarter of 2005, and amount of child benefits increased by 220% times as compared to the similar date of 2004.

According to data of the Ministry of Labour and Social Protection of the Republic of Tajikistan, amount of compensations paid to low-income families with children studying in secondary schools during nine months of 2005 reached 7645.6 thsd.somoni (104.5% of plan). Compensations were paid to 406260 pupils (25% of all pupils).

Table 9: Payment of social benefits

thsd.somoni

	2004			2005		
	1 quarter	2 quarter	3 quarter	1 quarter	2 quarter	3 quarter
Lump-sum birth benefit	72,0	65,1	64,2	123,0	169,7	142,0
Child benefit (for children below 1.5 years old)	196,5	211,0	172,7	311,6	409,1	365,3
Compensations to low-income families with children studying in secondary schools*	1940,9	1969,0	1890,6	2409,7	2522,5	2713,4

*) According to data of Ministry of Labour and Social Protection of Population. In 2005, 25% of children studying in schools were provided with compensations in accordance with the Decree of the President of the Republic of Tajikistan No.1403 of 4 November 2004

3.4. Food insecurity: households spending more than 70% of expenditures on food

Food insecurity means a situation when people have no regular physical, economic or social access to adequate quantities of qualitative and safe food required for their nutrition and meets their preferences for an active and healthy life.

The results of the Household Budget Survey (Table 9) show that the share of expenditures on food in the structure of total expenditures decreased by 1.3% as compared to the first half of 2004, and accounted for less than 70%. The share of expenditures for food in urban area decreased by 1.9%, and in rural area - by 0.6%. At the same time, pensioners spend about 80% of total consumer expenditures for food (Table 10).

Table 10: Share of consumer expenditures for food in total structure of household expenditures

	2003	2004	1 st half of 2004	1 st half of 2005
Republic of Tajikistan	66,1	64,5	67,5	66,6
Urban	70,1	68,6	69,7	68,4
Rural	63,5	62,1	66,0	65,6
Oblasts				
Dushanbe	83,7	84,2	83,8	84,3
GBAO				
Sogd oblast	60,3	57,2	59,2	61,9
Khatlon oblast	70,7	66,8	70,1	68,2
RRS	63,2	66,8	71,6	77,8
Vulnerable groups of population				
Households having 3 and more children	65,7	54,5	68,2	69,1
Pensioners	77,3	79,2	79,5	79,6

More detailed information on expenditures, incomes and deciles is available in Appendix 6.

CHAPTER IV. USE AND UTILIZATION

Use of food refers to the selection, composition, preparation and allocation of food within the family. Utilization of good refers to the ability of the human body to take and use food within the body. Food use covers knowledge of appropriate diets, and proper allocation of food. The ability of the body to utilize food is affected by its state of health and access to clean drinking water, access to basic health services, etc. The ultimate measure of food security is the nutritional status of the population.

4.1. Consumption of food products by the population

One of the measurements of food and nutritional insecurity is the calculation of daily calorie intake per one household member. The average daily calorie intake reached 2071.62 Kcal per capita in 2004, and 2015 Kcal per capita in the first half of 2005 and was slightly lower recommendations of the World Health Organization (WHO) (2100 Kcal per day).

In all regions of Tajikistan consumption of bread and bread products exceeds approved medical norm by 16% and amounted on average to 75.7 kg in the first half of 2005 per one household member.

In the first half of 2005, in Tajikistan the consumption of potatoes amounted to 16.1 kg per capita, vegetables and melons – 32.5 kg, milk and dairy products – 28.6 kg, meat and meat products – 3.1 kg, vegetable oil – 5.8 kg, eggs - 16 pieces, sugar and confectionery – 5 kg, fruits – 9.6 kg.

In total structure of household's expenditures for food, bread and bread products occupies the first place (28.2%).

Appendix 9 shows the detailed information on per capita food consumption in the households of the Republic of Tajikistan.

Table 11: Nutritional values of foods consumed per a day (excluding beer and wine)

	<i>Per one household member per a day</i>	<i>of which:</i>		<i>Per one household member per a day</i>	<i>of which:</i>	
		<i>urban area</i>	<i>rural area</i>		<i>urban area</i>	<i>rural area</i>
	<i>1st half of 2004</i>			<i>1st half of 2005</i>		
Proteins, gr.	45,96	37,13	49,22	46,38	38,28	49,39
of which animal, gr.	6,01	4,61	6,52	6,14	4,62	6,70
Fats, gr.	40,58	40,20	40,66	44,36	43,84	44,51
of which animal, gr.	6,72	6,14	6,93	7,13	6,34	7,42
Carbohydrate, gr.	347,81	286,41	370,38	350,52	296,04	370,66
Caloric value of consumed food, k/calories	1967,73	1730,58	2054,01	2015,19	1802,61	2093,16
of which animal, gr.	107,01	82,55	116,06	110,44	85,04	119,90

Source: household budget surveys

4.2. Food security indicators not related to income

Food utilization also depends on the health status of the population as well as on the knowledge of hygiene and appropriate diets, on access to basic health services and utilities such as clean drinking water and sanitation.

4.2.1 Population morbidity

The greatest number of cases of infectious diseases falls on spring and summer periods when population consumes more water and fresh vegetables and fruits. In this period, incidence of tuberculosis and brucellosis, caused by infected animal food is increasing.

The following increase in *tuberculosis* and *brucellosis* cases was registered during three quarter of 2005 as compared to the corresponding periods:

in the first quarter - by 20.8% and 21.9%, respectively; and by 15.1% and 58.8% among children of 0-14 years old;

in the second quarter - by 41.2% and 25.6%, respectively; and by 63% and 21.4% among children of 0-14 years old;

in the third quarter - number of tuberculosis cases increased by 33.2%, but number of brucellosis cases decreased by 2%. (See Tables 13 and 14).

Share of acute enteric infections in total number of infection diseases accounted for:

in the first quarter - 40.1%; and 44.7% among children of 0-14 years old;

in the second quarter - more than 70%; and 86.5% among children of 0-14 years old;

in the third quarter - 57%; and 93.4% among children of 0-14 years old;

In the first quarter of 2005 as compared to the similar period of the previous year, incidence of infection diseases decreased by 10%, of which bacterial dysentery - by 13.5%, typhoid fever - by 12.8%; in the second quarter of 2005 the decrease was 16%, 9%, and 45%, respectively. Incidence of infection diseases among children of 0-14 years old decreased by 16%, of which bacterial dysentery - by 21%; and in the second quarter of 2005 the decrease was 9.7% and 19.7%, respectively. In the third quarter of 2005 as compared to the third quarter of 2004, incidence of infection diseases among population increased by 16.1%, and by 9.4% among children of 0-14 years old. Decrease in incidence of acute enteric infections by 15% was registered during this period, while among children of 0-14 years old this indicator increased by 20.6%. At the same time, number of cases of bacterial dysentery increased by 1.7 times (by 28.5 times among children of 0-14 years old). The most adverse months were July and August of 2005. In September of the current year, incidence of acute enteric infections decreased almost by 50%.

Table 12. Population morbidity caused by some specific infection diseases*(cases)*

	2003	2004	2004			2005		
			<i>1 quarter</i>	<i>2 quarter</i>	<i>3 quarter</i>	<i>1 quarter</i>	<i>2 quarter</i>	<i>3 quarter</i>
Total number of registered cases	95819	99296	9928	24191	34612	10238	20973	40200
of which:								
Acute enteric infections	66698	70521	4570	17483	27031	4110	14710	22976
of which:								
Bacterial dysentery (shigellosis)	1830	1557	222	410	778	192	373	1326
Typhoid fever	3148	2481	367	499	972	320	277	796
Tuberculosis, new cases	3074	3324	539	976	810	651	1378	1079
Brucellosis	1471	1309	169	630	412	206	791	403

Table 13. Morbidity of children (0-14) by some specific infection diseases*(cases)*

	2003	2004	2004			2005		
			<i>1 quarter</i>	<i>2 quarter</i>	<i>3 quarter</i>	<i>1 quarter</i>	<i>2 quarter</i>	<i>3 quarter</i>
Total number of registered cases	68150	75255	6694	17253	26168	6735	15028	28629
of which:								
Acute enteric infections	53805	58797	3585	14083	22168	3012	12719	26733
of which:								
Bacterial dysentery	862	700	80	183	376	63	147	483
Typhoid fever	1164	966	142	172	345	156	112	301
Tuberculosis, new cases	288	241	33	73	65	38	119	66
Brucellosis	219	187	17	103	55	27	125	53

METHODOLOGY

1. Methodology of food security analysis

“Food and nutrition security is achieved if adequate food (quantity, safety, quality, social-cultural acceptance) is available and accessible for and satisfactory used and utilized by all individuals at all time to live a healthy and active life”.

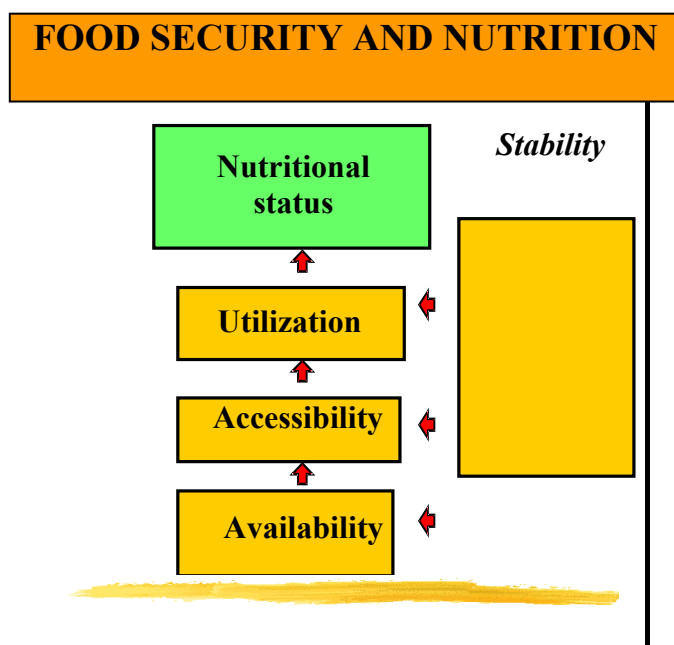
Availability physical existence of quantitatively and qualitatively adequate and safe food items.

Access: all households and household members have sufficient resources to obtain appropriate food (*through* production, purchase or donation)

Use and utilization: adequate knowledge, health and sanitation to enable the human body to digest and utilize that food

Stability: continuous ensuring of availability of, access to and appropriate use and utilization of food. If not, individuals will suffer from chronic or transitory food insecurity

For case of reference the four pillars of food and nutrition security are pictured below:



All four dimensions need to be fulfilled if there is to be food and nutrition security. As individuals and households live in a society, the 4 dimensions of FNS need to co-exist at all levels, from the individual and household level (**micro level**), to the community (village, rayon, oblast) level, representing the **meso level**, and the nation and global level

(macro level).

To monitor food security it is necessary to select relevant indicators and to measure these indicators at regular intervals.

2. Food balance methodology

Food balances for basic foodstuffs are compiled in natural terms.

In the course of the compilation of the food balance, the closing stocks as of December 31 in one year become the opening stocks on January 1 in the following year. With regard to imports and exports of products, the official data was used, in respect of production preliminary data.

Seed use is calculated on areas sown with agricultural crops as well as actual amount of seeds used for 1 ha. The calculation of lost was made according to the official norms.

In order to determine the number of eggs for the incubation the actual number of poultry offspring as well as norms on the number of chicken from the eggs laid for incubation.

The calculation of the volume of food products consumed by population as well as expenses on animal feeding was based on the data obtained during the survey of 925 households. The calculation of meat consumption also included the meat consumed in the course of observing national traditions (funeral, weddings, religious feasts, etc.)

Glossary

The *unemployed* - people of 16 and more who during period under review had no job (profitable occupation); were in search for a job i.e. applied to public employment offices or used alternative ways of job finding as well as were ready to start working.

Gross Domestic Product (GDP) - a general indicator of economic activity which is calculated in basic and market prices (nominal GDP) and in comparable prices (real GDP).

Consumer price index on goods and paid services to the population (CPI) - characterizes the change in the general price level for goods and services over time. The index measures the correlation of the value of actually set of goods and services during the given period to the value thereof during the basic period.

Average nominal monthly salary is calculated by dividing actually accrued salary fund to the staff and part-time employees by the number used for the calculation of average salary and number of months in a year during corresponding period.

Average daily per capita calorie intake measure the calories in the consumed food products per one household member as well as chemical composition in protein and fats.

Official unemployment rate - the ratio of people officially registered as unemployed to the number of economically active population, expressed in per cent.

List of abbreviations

GDP	Gross Domestic Product
GBAO	Gorno-Badakhshan Autonomous Oblast
CPI	Consumer price index on goods and paid services to the population
RRS	Regions of republican subordination
MDG	Millennium Development Goals

Appendix 1

Review of hydro meteorological conditions on the territory of the Republic of Tajikistan during the third quarter of 2005

Meteorological conditions

In **July** 2005, the average monthly air temperature throughout the republic was above the normal by 0.5 degrees, and only in some regions it was below the normal by 1 degrees: 27-32 degrees in valleys, 16-21 degrees in mountainous regions, 10-15 degrees in high mountain areas.

The fall-outs of various intensity throughout the republic were registered during 20 days of the month, and 12-15 days in Soghd Oblast and regions of republican subordination. In the eastern part of GBAO precipitations were registered during 9 days.

Amount of precipitations was 20-70% of long-term average (while normal is 20-30 mm for republic, and 3-9 mm for GBAO), and only in Djirgatal region amount of precipitation exceeded the normal value (129%). The heaviest rain 916 mm) was observed in Djirgital region on 16 July.

Frequently rains were accompanied by thunderstorms, and in some places by strong winds (up to 16-21 m/sec). Fogs were observed in valleys and piedmont regions during the second decade of the month, and dust-storm was registered in Isanbay on 10 July.

First and beginning of second decade of **August** were characterized by cool weather. Average daily air temperature during this period was below the norm by 1.5-5 degrees, at that, the highest decrease in temperature was observed during beginning and end of first decade.

Second and third decades of the month were characterized by settled hot weather , with average daily air temperature in valleys by 1-3 degrees above the norm. The period from 15 to 17 August was the most hot. Another picture was observed in mountainous regions where an air temperature during the periods from 12 to 22 and from 27 to 31 August decreased by 1-4 degrees.

Decrease of temperature was accompanied by slight amount of precipitations (0-5 mm), with maximum rainfalls in Dushanbe and Shaimak (5 mm).

In valleys, the amount of precipitation was near-norm apart from Dushanbe where the amount of precipitation reached 5 mm (while the norm is 2.6 mm). In mountainous regions, amount of precipitations was above the norm, and in some regions the norm was exceeded by 10-11 mm.

September was characterized by dry warm temperature. The average monthly air temperature in most regions of the republic was within the normal, and only in some regions of GBAO it was below the norm by 1 degree: 19-24 degrees in valleys, 12-19 degrees in mountains, and 4-9 degrees in high mountain areas.

The warmest weather was registered during second decade of the month. The maximum air temperature during this period rose up to 32-37 degrees in valleys, 25-30 degrees in mountains, and 13-18 degrees in high-mountain regions.

Precipitations were not observed during the most part of the month, and only on 21-23 September rains were registered in some regions of the republic. The monthly amount of precipitations throughout the republic was 4-15 mm (below the norm), and it was above the norm in Gissar valley and Shaimak.

Hydrological conditions

High water content was observed on the rivers of the republic during **July**. Monthly water discharge of the most rivers of the republic was near the norm (99-170%). As compared to the similar period of the previous year, water content of the rivers was within and above last year's volumes (92-170%).

During the month, the level of Sarez lake increased by 480 sm and amounted to 2583 sm (which is higher by 530 sm than the level of the previous year). Nurek reservoir capacity increased by 1.689 mln.m³ and amounted to 10110 mln.m³, which is higher than the level of the previous year by 0.606 mln.m³. The capacity of Kairakum reservoir decreased by 1.018 mln.m³ and amounted to 2302 mln.m³, which is less than the level of the previous year by 0.400 mln.m³.

During **August**, decrease of water content in the rivers of the republic was registered. At the end of first and beginning of second decade of August, the increase of water content due to high air temperature was observed in Isfara, Vakhsh and some other rivers of GBAO. Average monthly water discharge of the most rivers was below and near the normal (70-120%). As compared to the similar period of the previous year, water content of the rivers was below last year's volumes (10-20%).

During the month, Nurek reservoir capacity increased by 1.047 mln.m³ and amounted to 10,551 mln.m³, which is higher than the level of the previous year by 0.050 mln.m³. The capacity of Kairakum reservoir decreased by 0.720 mln.m³ and amounted to 1982 mln.m³, exceeding the level of the previous year by 0.298 mln.m³. the level of Sarez lake increased by 0.198 sm and reached 2,253 sm.

During **September**, the gradual decrease of water content was observed in the rivers of the republic. Only in second and third decades of month, gradual increase of water content was registered in Sirdarya river. Average monthly water discharge of the most rivers was within and above the normal (95-204%), except for Vakhsh and Yahsu rivers, where water discharge was near and below the long-term average values (76-102%).

During the month, Nurek reservoir capacity decreased by 0.066 mln.m³ and amounted to 10,485 mln.m³, which is less than the level of the previous year by 0.008 mln.m³. The capacity of Kairakum reservoir increased by 0.048 mln.m³ and amounted to 2030 mln.m³, which is higher than the level of the previous year by 0.275 mln.m³.

Review of snow slides and mudflows

No avalanches were registered and forecasted during the period **from July to September**. Mudflows were not observed due to lack of precipitations. However, mud floods were registered on many rivers of the republic in the first half of **July**, that caused significant damage to Tajikistan's economy. The mud floods were caused by high precipitations fell in March and April in mountains (exceeded the norm by 100%) and high-mountain regions (2000-4000 m above sea level) in the form of snow. Water content, current speed and water discharge sharply increased in Pyandj, Kizilsu-Yujniy and Yahsu, as well as Zeravshan river and its feeders - that caused mud floods. As a result, 3700 dwelling houses, 85 schools and hospitals, 200 km of power transmission and communication lines, 383 km of motor roads, 18 transformer plants, 44 bridges, more than 40 irrigation and waterside structures, 43 km of coast-protecting dams, 30 hydraulic power stations, 40 cattle farms, and 5 thsd. hectares of agricultural crops were destroyed. 38 victims were registered.

Appendix 2

Poverty Reduction Strategy Paper Indicators in the Republic of Tajikistan for 2004 - 2005

	Indicator	Measure	2004	1 st quarter of 2005	1 st half of 2005	9 months of 2005
MACROECONOMIC INDICATORS						
1.	GDP	mln.somoni	6157,5	1274,6	2796,3	5049,2
2.	GDP growth rate	%	110,6	107,8	108,1	105,1
3.	Agricultural output (in % to GDP)	%	36,7	8,3	18,5	37,1
4.	Industrial output (in % to GDP)	%	63,6	75,1	67,8	56,1
5.	Services (in % to GDP)	%	26,0	35,2	32,8	30,0
6.	Income from taxes (in % to GDP)	%	15,2	21,9	20,6	17,3
7.	Revenue of State budget (in % to GDP)	%	16,7	23,2	21,8	18,3
8.	Expenditures of State budget (in % to GDP)	%	17,6	19,6	21,2	19,0
9.	Exports	mln.USD	914,9	211,3	430,4	643,4
10.	Imports	mln.USD	1375,2	277,4	603,3	946,0
11.	Inflation rate in consumers' sector	%	5,7	1,8	4,1	5,7
12.	Share of private sector in GDP	%	39,8	-	-	-
13.	State budget revenues from privatization	thsd. somoni	35889,2	9052,1	19205,1	31784,8
POVERTY INDICATORS						
14.	Poverty level	%	64,4 ¹	x	x	x
16	Urban poverty level	%	55,4 ¹	x	x	x
17	Rural poverty level	%	67,7 ¹	x	x	x
18	Share of people living under absolute poverty	%	19,9 ¹	x	x	x
19.	Population incomes, according to household surveys, per 1 household member	somoni per a month	44,32	38,63	45,47	...
SOCIAL PROTECTION INDICATORS						
20.	Expenditures of state budget (in % to GDP) for social sector	%	6,6	9,6	9,9	8,8
21.	Registered unemployment rate	%	2,2	2,1	2,0	2,1
22.	Number of registered labour migrants	thsd. persons	2,3	x	1,4	...

	Indicator	Measure	2004	1 st quarter of 2005	1 st half of 2005	9 months of 2005
23.	Share of labour force in total population	%	29,1-2003г.	x	x	x
24.	Share of able-bodied population occupied in private sector	%	23,1-2003г.	x	x	x
25.	Share of invalids in total population	%	1,8	1,8	x	x
26.	Share of pensioners in total population	%	7,7	7,8	x	x
GENDER STATISTICS						
27.	Share of women in total labour force	%	-	-	-	-
28.	Share of women in total number of employees	%	52,4	x	x	x
29.	Share of women in executive authorities	%	24,9	x	x	x
30.	Share of women in representative agencies of State power	%	35,4	x	x	x
31.	Share of women in juridical departments	%	36,3	x	x	x
AGRICULTURE						
32.	Expenditures of State budget (in % to GDP)	%	0,5	0,6	0,7	0,6
33.	Number of employed in agricultural sector (excluding persons occupied in (dehkan) farms and private plot)	thsd. persons	546,4	521,8	539,8	552,6
34.	Wages and salaries in agricultural sector	somoni	34,96	35,94	35,90	38,13
38.	Wage arrears in agricultural sector	thsd. somoni	15621,2	16253,5	15578,8	16595,5
39.	Total number of farms	number	17097	19416	19416	19416
	of which in:					
	GBAO	number	53	49	49	49
	Sogd Oblast	number	1800	2957	2957	2957
	Khatlon Oblast	number	6032	7528	7528	7528
	RRS	number	8882	8882	8882	8882
40.	% of individual land utilization	%
IRRIGATION STATISTICS						
41.	Expenditures of State budget (in % to GDP)	%	0,1	0,13	0,18	0,1
42.	Total irrigated land	ha	735411	703809	703809	703809
	of which:					
	Arable land	ha	503916	499997	499997	499997
	Perennial plantations	ha	79517	77076	77076	77076
	Fallow lands	ha	16571	15940	15940	15940
	Hay-fields	ha	849	672	672	672

	Indicator	Measure	2004	1 st quarter of 2005	1 st half of 2005	9 months of 2005
	Pastures	ha	3247	2516	2516	2516
	Infields	ha	86108	71928	71928	71928
	Private household plots	ha	36499	32212	32212	32212
	Forests	ha	5704	3468	3468	3468
43.	Irrigated lands per capita	ha	0,12	0,11	0,11	0,11
44.	Share of arable land vulnerable to erosion	%
45.	Share of developed lands	%	1,0	x	x	x
46.	Share of lands vulnerable to salinization and swamping	%	1,9	x	x	x
HEALTH CARE						
47.	Expenditures of State budget (in % to GDP)	%	0,9	1,3	1,3	1,2
48.	Share of population suffering from malnutrition	per 100 000 population	132	x	x	x
49.	Maternal mortality ⁵	per 100 000 births	39,0	x	x	x
50.	Infant mortality	
	- according to MICS 2000	per 1000 births	89,0	x	x	x
51.	Registered childhood mortality	
52.	Rate of contraceptive use among women of fertile age (%)	%	14,8	x	x	x
53.	Share of 1-year children vaccinated against measles	%	97,5	x	x	x
54.	Coverage of vaccination, %	%	97,0-2002г.	x	x	x
55.	Mortality caused by malaria and typhoid in 1999, per 100 000 population	number	0/4,9	x	x	x
56.	Number of cases of AIDS / HIV ⁵ (as of the end of period)	cases	317/1	x	454
57.	Number of cases of tuberculosis	cases	3287	651	2029	3108
58.	Number of cases of typhoid fever	cases	2547	320	597	1393
59.	Infection diseases	per 100 000 population	1341,1	150,4	465,1	1038,0
	Acute intestinal infections		908,5	60,8	281,0	787,6
	Typhoid fever		38,0	4,7	8,9	20,2
	Diphtheria		0,04	0,01	0,04	0,03
	Whooping cough		1,1	0,03	0,06	0,3
	Measles		0,3	-	-	-
	Malaria discovered for a first time		44,6	0,3	7,2	22,2
	Scab		52,4	15,2	28,9	34,4
	Pediculosis		20,1	1,9	6,0	7,4

	Indicator	Measure	2004	1 st quarter of 2005	1 st half of 2005	9 months of 2005
	Influenza virus infection		1497,7	303,2	347,7	353,4
	Acute respiratory infections		4813,2	1781,2	2776,5	3384,7
	Viral hepatitis (including serum hepatitis)		159,5	26,1	51,0	52,7
	Varicella		19,8	3,4	5,8	6,6
	Mumps		6,3	1,4	3,2	5,1
	Meningococcal infection		1,0	0,2	0,5	0,6
	AIDS		0,01	-	-	-
	Human immunodeficiency virus		4,7	-	-	-
60.	Share of population consuming adequately iodized salt (%), according to MICS-2 conducted in 2000		20,2	x	x	x
EDUCATION						
61.	Expenditures of State budget (in % to GDP)	%	2,7	3,8	4,1	3,6
62.	Literacy rate among adult population, according to population census 2000	%	95,5	x	x	x
63.	Population with higher education	per 10 000 population	21,2	x	x	x
64.	Population with specialized secondary education	per 10 000 population	11,3	x	x	x
65.	Share of literate population among population at the age of 15-24, according to population census 2000	%	99,8	x	x	x
66.	Proportion of pupils starting grade 1 who reach grade 5	%	89,6	x	x	x
67.	Number of pupils per 1 trained teacher		schools – 17 IHE-16,2 SSEE-11,0	x	x	x
68.	Number of schoolbooks per 1 pupil	numbers per 1 pupil	8,1	x	x	x
69.	Proportion of girls and boys while enrollment to schools	%	girls-48 boys-52	x	x	x
70.	% of females, by type of education	%	IHE 26 SSEE-56 TVS-26.8 PE –29.8	x	x	x
ENVIRONMENT						
71.	Expenditures of State budget (in % to GDP)	%	0,05	0,02	0,04	0,04
72.	Proportion of irrigated and marshy lands	%	x	x	x	x
73.	Consumption of ozone depleters	metric ton	64,26	x	x	x
74.	Percentage of forest land (in % to total lands)	%	3	x	x	x
INFRASTRUCTURE DEVELOPMENT						
75.	Expenditures of State budget (in % to GDP)	%	1,3	0,9	1,3	1,3

	Indicator	Measure	2004	1 st quarter of 2005	1 st half of 2005	9 months of 2005
76.	Share of regions where more than 50% of roads are in bad conditions		x	x	x	x
77.	Share of population with access to television and radio broadcasting	%	Телев 93,7	x	x	x
78.	Number of telephones per 100 resident population	number	4	4	4	4
79.	Number of mobile phones per 100 resident population	number	2,5	2,4	3,1	4,8
80.	Internet per 1000 resident population		0,3	0,3	0,4	0,5
81.	Population expenditures for communal services and electric power, per 1 household member	somoni per month	0,98	1,22	1,20	...
82.	Population receiving compensation for: – gas	persons / number of families	338778 25473	256252 37171	235063 39429	208664 44834
	- electric power	number of families	543309	527348	514226	511302
83.	Number of foreign tourists	persons	401	x	144	164

2) Source: World Bank -2003

x) according to annual reports

3) according to data of the Ministry of Health Care of the Republic of Tajikistan

APPENDIX 3. CHANGES IN AVERAGE WHOLESALE PRICES (SUPPLY) IN TAJIKISTAN

(somon / kg)

	2003			2004			2005		
	I quarter	II quarter	III quarter	I quarter	II quarter	III quarter	I quarter	II quarter	III quarter
	Potatoes								
GBAO	-	-		-	0,27	0,27	-	0,30	0,30
Sogd Oblast	0,19	0,20	0,20	0,16	0,09	0,11	0,12	0,13	0,10
Khatlon Oblast	0,58	0,28	0,24	0,21	0,14	0,18	0,43	0,30	0,43
RRS	0,73	0,70	0,29	0,50	0,19	0,19	0,30	0,29	0,37
Average in the Republic	0,21	0,21	0,26	0,18	0,12	0,17	0,13	0,19	0,29
	Milk								
GBAO	0,58	0,26	0,51	0,50	0,46	0,45	-	0,50	-
Sogd Oblast	0,23	0,22	0,23	0,30	0,28	0,28	0,39	0,38	0,37
Khatlon Oblast	0,20	0,24	0,17	0,19	0,20	0,20	0,17	0,19	0,21
RRS	0,36	0,35	0,34	0,44	0,44	0,44	0,61	0,57	0,58
Average in the Republic	0,26	0,26	0,25	0,32	0,31	0,31	0,42	0,41	0,41
	Wheat								
GBAO	0,39	0,24	0,43	0,45	0,45	0,45	-	-	0,60
Sogd Oblast	0,20	0,25	0,20	0,25	0,19	0,26	0,39	0,38	0,30
Khatlon Oblast	0,34	0,23	0,21	0,46	0,33	0,28	0,62	0,29	0,28
RRS	0,28	0,29	0,33	0,35	0,33	0,33	0,54	0,46	0,60
Average in the Republic	0,31	0,24	0,23	0,33	0,25	0,27	0,42	0,34	0,31

APPENDIX 4. CHANGES IN AVERAGE CONSUMER PRICES IN TAJIKISTAN IN 2004-2005 (somoni / kg)

	I quarter		II quarter		III quarter	
	2004	2005	2004	2005	2004	2005
	Potatoes					
Dushanbe	0,55	0,62	0,38	0,85	0,39	0,77
Sogd Oblast	0,32	0,32	0,24	0,58	0,26	0,56
Khatlon Oblast	0,58	0,62	0,34	0,72	0,37	0,79
Average in the Republic	0,48	0,52	0,32	0,71	0,34	0,71
	Milk					
Dushanbe	1,15	1,37	1,15	1,40	1,15	1,40
Sogd Oblast	0,45	0,60	0,47	0,57	0,45	0,58
Khatlon Oblast	0,50	0,52	0,50	0,48	0,50	0,49
Average in the Republic	0,70	0,83	0,71	0,82	0,70	0,82
	Flour of 1st grade					
Dushanbe	1,04	1,05	1,04	1,05	1,04	1,03
Sogd Oblast	0,90	0,95	0,90	0,94	0,90	0,90
Khatlon Oblast	1,09	1,05	1,05	1,05	1,05	1,03
Average in the Republic	1,01	1,02	1,00	1,01	1,00	0,99
	Wheat					
Dushanbe	0,60	0,65	0,65	0,75	0,67	0,84
Sogd Oblast	0,47	0,59	0,53	0,59	0,53	0,53
Khatlon Oblast	0,53	0,70	0,52	0,70	0,58	0,59
Average in the Republic	0,53	0,65	0,57	0,68	0,59	0,65
	Rice					
Dushanbe	1,39	1,67	1,50	2,03	1,63	2,65
Sogd Oblast	1,26	1,44	1,28	1,72	1,35	2,29
Khatlon Oblast	1,25	1,44	1,27	1,80	1,35	2,35
Average in the Republic	1,30	1,52	1,35	1,85	1,44	2,43
	Sugar					
Dushanbe	1,44	1,53	1,42	1,67	1,59	1,75
Sogd Oblast	1,41	1,54	1,50	1,69	1,57	1,70
Khatlon Oblast	1,47	1,53	1,47	1,67	1,61	1,74
Average in the Republic	1,44	1,54	1,46	1,68	1,59	1,73

	I-квартал		II -квартал		III -квартал	
	2004	2005	2004	2005	2004	2005
	Onions					
Dushanbe	0,58	0,64	0,40	0,52	0,32	0,38
Sogd Oblast	0,28	0,34	0,33	0,42	0,24	0,23
Khatlon Oblast	0,56	0,65	0,38	0,52	0,30	0,31
Average in the Republic	0,47	0,54	0,37	0,49	0,28	0,31
	Cotton oil					
Dushanbe	2,75	2,82	2,75	2,80	2,78	2,80
Sogd Oblast	2,79	2,82	2,88	2,73	2,94	2,73
Khatlon Oblast	2,52	2,60	2,49	2,65	2,59	2,60
Average in the Republic	2,69	2,74	2,71	2,69	2,77	2,71
	Mutton					
Dushanbe	8,30	8,25	8,50	8,25	8,33	8,33
Sogd Oblast	8,43	8,43	8,40	8,19	8,39	8,49
Khatlon Oblast	7,49	7,67	7,70	7,37	7,73	7,50
Average in the Republic	8,07	8,12	8,20	7,93	8,15	8,11
	Beef					
Dushanbe	7,00	7,00	7,00	7,27	7,00	7,75
Sogd Oblast	6,43	6,47	6,30	6,21	6,30	6,55
Khatlon Oblast	6,44	6,40	6,46	6,30	6,44	6,59
Average in the Republic	6,62	6,62	6,59	6,59	6,58	6,96
	Chicken meet					
Dushanbe	6,22	6,22	6,22	6,22	6,22	6,22
Sogd Oblast	5,50	5,64	4,60	5,53	5,00	5,86
Khatlon Oblast	6,37	6,33	6,37	6,33	6,37	6,33
Average in the Republic	6,03	6,06	5,73	6,03	5,86	6,14
	Eggs (10 pieces)					
Dushanbe	2,53	3,03	2,50	2,93	2,97	3,27
Sogd Oblast	2,23	2,82	2,00	2,23	2,32	2,61
Khatlon Oblast	2,66	3,00	2,50	3,00	2,63	2,85
Average in the Republic	2,47	2,95	2,33	2,72	2,64	2,91

APPENDIX 5. FOOD BALANCE OF THE REPUBLIC OF TAJIKISTAN

	Basic foodstuffs (physical quantities)	Bread and bread products in grain, thousand tons				Potatoes fresh, thousand tons				Vegetables and melons fresh, thousand tons				Fruits and berries fresh, thousand tons				Sugar and confectionery, in sugar, thousand tons			
		I q. 2004	II q. 2004	III q. 2004	IV q. 2004	I q. 2004	II q. 2004	III q. 2004	IV q. 2004	I q. 2004	II q. 2004	III q. 2004	IV q. 2004	I q. 2004	II q. 2004	III q. 2004	IV q. 2004	I q. 2004	II q. 2004	III q. 2004	IV q. 2004
1.	Stocks at the beginning of the period	215,7	17,3	39,1	290,1	234,9	154,4	29,5	100,2	95,0	1,0	3,0	11,0	13,0	0,1	-	26,0	47,4	47,1	42,8	28,7
2.	Food production in the country (+)	-	121,0	483,0	75,0	-	68,8	196,4	262,0	0,4	85,0	444,9	299,5	-	12,9	98,2	126,5	-	-	-	1,6
3.	Food imports (+)	86,6	126,8	20,5	42,9	-	-	0,6	-	0,1	2,2	-	0,1	2,7	1,0	0,8	0,3	13,6	8,4	49,8	37,3
	Availability (1-3) (+)	302,3	265,1	542,6	408,0	234,9	223,2	226,5	362,2	95,5	88,2	447,9	310,6	15,7	14,0	99,0	152,8	61,0	55,5	92,6	67,6
4.	Used for seed (-)	60,0	-	10,0	37,2	31,2	81,0	50,0	-	-	-	-	-	-	-	-	-	-	-	-	-
5.	Used as fodder (-)	-	-	-	-	-	-	-	-	-	-	-	-	-	-	-	-	-	-	-	-
6.	Losses (-)	-	-	12,1	-	-	-	9,0	21,0	-	8,0	9,0	83,0	-	0,6	0,9	7,6	-	-	-	-
7.	Food exports (-)	-	-	-	-	-	-	0,1	0,2	0,5	17,7	26,4	46,0	5,3	5,7	11,3	35,6	-	-	-	-
8.	Availability for consumption by the population (-)	225	226,0	230,0	246,0	49,3	112,7	67,2	75,3	94,0	59,5	401,5	160,0	10,3	7,7	60,8	93,6	13,9	12,7	36,0	47,0
9.	Other utilization (-)	-	-	0,4	3,0	-	-	-	1,0	-	-	-	-	-	-	-	12,7	-	-	27,9	-
	Consumption (4-9) (-)	285	226,0	252,5	286,2	80,5	112,7	126,3	97,5	94,5	85,2	436,9	289,0	15,6	7,7	73,0	149,5	13,9	12,7	63,9	47,0
10.	Stocks at the end of the period	17,3	39,1	290,1	121,8	154,4	29,5	100,2	264,7	1,0	3,0	11,0	21,6	0,1	-	26,0	3,3	47,1	42,8	28,7	20,6

	Basic foodstuffs (physical quantities)	Meat and meat products in carcass weight, thousand tons				Milk and dairy products, in milk, thousand tons				Eggs, million				Vegetable oil, thousand tons				Fish and fish products, tons			
		I q. 2004	II q. 2004	III q. 2004	IV q. 2004	I q. 2004	II q. 2004	III q. 2004	IV q. 2004	I q. 2004	II q. 2004	III q. 2004	IV q. 2004	I q. 2004	II q. 2004	III q. 2004	IV q. 2004	I q. 2004	II q. 2004	III q. 2004	IV q. 2004
1.	Stocks at the beginning of the period	8,7	0,5	0,2	0,1	0,6	-	-	-	3,3	0,2	0,7	0,6	0,9	0,2	2,3	3,4	11,0	7,0	1,0	1,7
2.	Food production in the country (+)	7,5	13,6	13,5	13,6	93,7	127,6	120,6	147,6	16,0	20,0	21,3	20,4	6,8	10,6	3,5	7,3	19,1	53,3	74,3	-
3.	Food imports (+)	0,3	0,1	-	5,8	0,3	0,2	0,2	0,9	1,1	-	28,0	18,9	2,5	2,1	2,1	29,4	12	0,4	64,4	96,2
	Availability (1-3) (+)	16,5	14,2	13,7	19,5	94,6	127,8	120,8	148,5	20,4	23,6	50,0	39,9	10,2	12,9	7,9	40,1	42,1	60,7	140,4	97,9
4.	Used for seed (-)	-	-	-	-	-	-	-	-	-	-	-	-	-	-	-	-	-	-	-	-
5.	Used as fodder (-)	-	-	-	-	-	-	-	-	-	-	-	-	-	-	-	-	-	-	-	-
6.	Losses (-)	-	-	-	-	-	-	-	-	-	-	-	-	-	-	-	-	-	-	-	-
7.	Food exports (-)	-	-	-	-	-	-	0,1	-	-	-	-	-	-	-	-	-	-	-	-	-
8.	Availability for consumption by the population (-)	16,0	14,0	13,6	18,9	94,6	127,8	118,7	147,9	20,2	22,9	48,6	38,9	10,0	10,6	4,5	35,1	35,1	59,0	138,7	91,2
9.	Other utilization (-)	-	-	-	-	-	-	2,0	-	-	-	0,8	-	-	-	-	-	-	-	-	-
	Consumption (4-9) (-)	16,0	14,0	13,6	18,9	94,6	127,8	120,8	147,9	20,2	22,9	49,4	38,9	10,0	10,6	4,5	35,1	35,1	59,0	138,7	91,2
10.	Stocks at the end of the period	0,5	0,2	0,1	0,6	-	-	-	0,6	0,2	0,7	0,6	1,0	0,2	2,3	3,4	5,0	7,0	1,7	1,7	6,7

APPENDIX 5. FOOD BALANCE OF THE REPUBLIC OF TAJIKISTAN (continued)

	Basic foodstuffs (physical quantities)	Bread and bread products in grain, thousand tons				Potatoes fresh, thousand tons				Vegetables and melons fresh, thousand tons				Fruits and berries fresh, thousand tons				Sugar and confectionery, in sugar, thousand tons			
		1 q. 2005	II q. 2005	III q. 2005		1 q. 2005	II q. 2005	III q. 2005		1 q. 2005	II q. 2005	III q. 2005		1 q. 2005	II q. 2005	III q. 2005		1 q. 2005	II q. 2005	III q. 2005	
1.	Stocks at the beginning of the period	121,8	65,7	271,4		264,7	101,2	137,9		21,6	2,0	6,0		3,3	0,8	0,8		20,6	13,5	37,2	
2.	Food production in the country (+)	-	174	439,0		-	73,9	236,6		0,4	89,6	516,5		-	14,6	115,0		0,4	0,8	0,7	
3.	Food imports (+)	100,5	257,7	154,9		-	0,2	-		0,2	0,7	-		1,9	-	0,5		18,5	33,1	42,9	
	Availability (1-3) (+)	222,3	497,4	865,3		264,7	175,3	374,5		22,2	92,3	522,5		5,2	15,4	116,3		39,5	47,4	80,8	
4.	Used for seed (-)	80,0	-	-		80,0	-	-		-	-	-		-	-	-		-	-	-	
5.	Used as fodder (-)	-	-	-		-	-	-		-	-	-		-	-	-		-	-	-	
6.	Losses (-)	-	-	-		7,0	-	1,0		1,7	-	-		0,1	0,1	-		-	-	-	
7.	Food exports (-)	0,2	0,1	-		0,2	-	-		2,7	3,0	31,8		-	-	37,6		-	0,028	-	
8.	Availability for consumption by the population (-)	76,4	225,6	226,0		76,0	37,1	79,9		15,8	83,3	242,7		4,3	14,5	25,0		25,0	9,2	12,0	
9.	Other utilization (-)	0,3	0,3	0,3		0,3	0,3	0,3		-	-	-		-	-	-		1,0	1,0	1,0	
	Consumption (4-9) (-)	156,9	226,0	226,3		163,5	37,4	80,2		20,2	86,3	274,5		4,4	14,6	62,6		26,0	10,2	13,0	
10.	Stocks at the end of the period	65,7	271,4	639,0		101,2	137,9	294,3		2,0	6,0	248,0		0,8	0,8	53,7		13,5	37,2	67,8	

	Basic foodstuffs (physical quantities)	Meat and meat products in carcass weight, thousand tons				Milk and dairy products, in milk, thousand tons				Eggs, million				Vegetable oil, thousand tons				Fish and fish products, tons			
		1 q. 2005	I1 q. 2005	III q. 2005		1 q. 2005	I1 q. 2005	III q. 2005		1 q. 2005	I1 q. 2005	III q. 2005		1 q. 2005	I1 q. 2005	III q. 2005		1 q. 2005	I1 q. 2005	III q. 2005	
1.	Stocks at the beginning of the period	0,6	0,5	0,6		0,6	0,6	0,6		1,0	0,5	0,5		5,0	1,0	1,0		6,7	0,7	0,5	
2.	Food production in the country (+)	9,6	9,3	14,6		99,2	119,3	141,6		22,2	24,3	26,6		8,0	2,8	5,0		-	82	42,4	
3.	Food imports (+)	3,3	2,0	2,3		0,3	2,4	-		17,8	11,4	15,3		8,2	12,7	12,6		81	14	82,8	
	Availability (1-3) (+)	13,5	11,8	17,5		100,1	122,3	142,2		41,0	36,2	42,4		21,2	16,5	18,6		87,7	96,7	125,7	
4.	Used for seed (-)	-	-	-		-	-	-		-	-	-		-	-	-		-	-	-	
5.	Used as fodder (-)	-	-	-		-	-	-		-	-	-		-	-	-		-	-	-	
6.	Losses (-)	-	-	-		-	-	-		-	-	-		-	-	-		-	-	-	
7.	Food exports (-)	-	-	-		-	-	-		-	-	-		-	-	0,2		-	-	-	
8.	Availability for consumption by the population (-)	13,0	11,2	16,0		99,0	121,4	141,0		40,4	35,6	42,0		16,7	15,5	16,0		87,0	96,2	122,0	
9.	Other utilization (-)	-	-	-		0,5	0,3	0,4		0,1	0,1	0,1		-	-	-		-	-	-	
	Consumption (4-9) (-)	13,0	11,2	16,0		99,5	121,7	141,4		40,5	35,7	42,1		20,2	15,5	16,2		87,0	96,2	122,0	
10.	Stocks at the end of the period	0,5	0,6	1,5		0,6	0,6	0,8		0,5	0,5	0,3		1,0	1,0	2,4		0,7	0,5	3,7	

**APPENDIX 6. MONEY INCOMES, EXPENDITURES AND CONSUMPTION OF HOUSEHOLDS, IN THE REPUBLIC OF TAJIKISTAN,
BY DECILE POPULATION GROUPS (according to sampling household budget survey)**

	All households				of which:							
					Urban				Rural			
	the poorest 10% of population		the richest 10% of population		the poorest 10% of population		the richest 10% of population		the poorest 10% of population		the richest 10% of population	
	I half of 2004	I half of 2005	I half of 2004	I half of 2005	I half of 2004	I half of 2005	I half of 2004	I half of 2005	I half of 2004	I half of 2005	I half of 2004	I half of 2005
Money incomes , somoni	7,86	9,02	72,88	101,96	17,94	19,58	96,24	128,57	6,93	8,02	59,98	88,47
of which:												
labor incomes	4,30	5,69	38,63	51,10	14,36	16,42	67,10	91,94	4,45	5,07	19,56	23,78
social payments (pension, scholarships, benefits and other payments)	0,77	1,12	2,45	3,40	1,28	1,07	3,53	5,29	0,84	1,01	0,98	1,74
receipts from sales of agricultural products, feeds, livestock, etc.	0,71	1,30	8,86	15,23			0,30	2,25	0,71	1,31	14,46	26,00
Expenditures , somoni	11,59	16,26	69,06	94,89	18,08	20,69	93,51	119,94	11,49	16,66	55,39	81,18
of which:												
consumer expenditures	10,66	15,36	57,99	72,51	17,29	20,15	79,44	96,68	10,48	15,75	45,72	59,18
purchase of foods, including public catering	7,83	11,48	32,81	38,06	14,81	17,81	43,92	52,57	7,72	11,39	24,87	29,96
purchase of nonfoods for personal consumption	1,54	2,22	15,96	21,67	1,04	0,91	19,03	28,29	1,60	2,53	15,82	18,38
services	1,26	1,61	8,91	12,27	1,42	1,40	16,02	15,38	1,14	1,79	4,73	10,27
purchase of alcoholic beverages	0,03	0,05	0,31	0,51	0,01		0,47	0,56	0,02	0,05	0,29	0,57
Consumption of main foodstuffs, per 1 household member, kg												
Bread and bread products	17,82	11,95	20,99	14,69	11,23	7,79	15,43	11,36	18,04	12,30	25,58	17,49
Potatoes	3,57	2,13	5,80	3,66	2,79	1,86	5,79	3,75	3,78	2,25	5,81	3,68
Vegetables and melons	4,78	3,65	13,04	7,50	4,69	2,98	12,05	7,18	4,80	3,77	13,91	7,98
Fruits and berries, including dry	0,55	0,32	1,50	1,20	0,27	0,24	2,96	1,26	0,65	0,35	1,20	1,10
Meat and meat products	0,25	0,33	1,49	1,25	0,28	0,26	1,82	1,36	0,23	0,36	1,22	1,13
Milk and dairy products	4,57	3,14	8,45	7,00	1,57	1,05	8,62	6,00	5,63	3,29	8,39	7,84
Fish and fish products			0,02	0,01			0,05				0,01	
Eggs (pieces)	2	2	5	4	2	1	7	5	2	2	4	4
Sugar and confectionery	0,80	0,65	1,58	1,10	0,80	0,49	1,76	1,32	0,76	0,68	1,45	1,05
Vegetable oil and other fats	0,96	0,72	1,84	1,25	0,95	0,66	1,70	1,33	0,94	0,74	1,94	1,28

**APPENDIX 7. DISTRIBUTION OF HOUSEHOLDS AND POPULATION IN THEM BY PER CAPITA INCOME
IN THE REPUBLIC OF TAJIKISTAN IN THE FIRST QUARTERS OF 2004-2005** (according to sampling household budget surveys, in %)

	Distribution by money income in 1st half of 2004			
	Total income		Disposable income	
	Number of households surveyed	Population in them	Number of households surveyed	Population in them
Total number	925	5424	925	5424
Including those with monthly per capita income (somoni):				
below 5,00	10,7	11,5	10,9	11,7
5,01-8,00	8,3	9,8	8,5	10,0
8,01-11,00	9,3	10,9	9,7	11,4
11,01-14,00	8,9	10,1	9,2	10,5
14,01-17,00	9,5	11,0	9,6	10,9
17,01-20,00	9,0	9,5	9,0	9,4
20,01-23,00	7,2	7,1	7,3	7,1
23,01-26,00	6,2	5,7	6,2	5,7
26,01-29,00	5,0	4,5	5,1	4,6
29,01-32,00	4,0	3,4	4,1	3,4
32,01-35,00	3,3	2,7	2,9	2,4
35,01-38,00	3,0	2,5	3,4	2,7
38,01-41,00	2,7	2,1	2,2	1,7
41,01-44,00	1,7	1,3	1,8	1,3
44,01-47,00	2,0	1,5	1,7	1,3
47,01-50,00	1,4	0,9	1,2	0,8
50,01-53,00	1,0	0,7	0,9	0,6
53,01-56,00	0,7	0,5	0,6	0,4
56,01 and more	6,1	4,3	5,7	4,1

	Distribution by money income in 1st half of 2005			
	Total income		Disposable income	
	Number of households surveyed	Population in them	Number of households surveyed	Population in them
Total number	925	5394	925	5394
Including those with monthly per capita income (somoni):				
below 7,00	10,3	10,9	10,4	11,1
7,01-11,00	7,4	8,5	7,5	8,6
11,01-15,00	9,1	10,7	9,5	11,1
15,01-19,00	11,6	13,4	11,6	13,4
19,01-23,00	9,5	9,8	10,1	10,3
23,01-27,00	8,5	8,6	8,4	8,5
27,01-31,00	7,9	7,9	7,9	7,9
31,01-35,00	6,1	5,9	6,8	6,6
35,01-39,00	5,6	5,2	5,1	4,7
39,01-43,00	3,9	3,7	3,9	3,5
43,01-47,00	3,4	2,9	3,6	2,9
47,01-51,00	2,8	2,4	2,7	2,2
51,01-55,00	2,1	1,6	1,6	1,3
55,01-59,00	1,6	1,2	1,6	1,1
59,01-63,00	1,6	1,2	1,4	1,0
63,01-67,00	0,9	0,7	0,9	0,7
67,01-71,00	1,1	0,9	1,0	0,8
71,01-75,00	0,5	0,4	0,5	0,4
75,01 and more	6,1	4,1	5,5	3,9

APPENDIX 8. STRUCTURE OF AVERAGE MONTHLY EXPENDITURES OF POPULATION IN THE REPUBLIC OF TAJIKISTAN
(according to sampling household budget survey)

	I half of 2004						I half of 2005					
	Per 1 household member, somoni / month	of which:		Per 1 household member, in %	of which:		Per 1 household member, somoni / month	of which:		Per 1 household member, in %	of which:	
		Urban area	Rural area		Urban area	Rural area		Urban area	Rural area		Urban area	Rural area
Money expenditures	29,01	39,86	24,98	100,0	100,0	100,0	37,73	49,39	33,32	100,00	100,00	100,00
of which:												
Consumer expenditures	25,89	36,46	21,96	89,2	91,5	87,9	32,98	44,32	28,70	87,4	89,7	86,1
including:												
on foods	17,48	25,58	14,50	67,5	70,2	66,0	21,97	30,32	18,81	66,6	68,4	65,5
on nonfoods	5,08	5,79	4,80	19,6	15,9	21,9	6,83	8,36	6,25	20,7	18,9	21,8
including:												
clothes, footwear, fabrics	2,18	2,52	2,06	42,9	43,5	42,9	2,87	4,20	2,38	42,0	50,2	38,1
furniture and cultural and household appliances	0,53	0,60	0,50	10,4	10,4	10,4	0,77	0,91	0,71	11,3	10,9	11,4
medicines	0,39	0,52	0,34	7,7	9,0	7,1	0,54	0,60	0,52	7,9	7,2	8,3
building materials	0,53	0,19	0,65	10,4	3,3	13,5	0,84	0,27	1,06	12,3	3,2	17,0
fuel	0,08	0,12	0,07	1,6	2,1	1,5	0,15	0,07	0,17	2,2	0,8	2,7
tobacco goods, makhorka	0,16	0,19	0,14	3,1	3,3	2,9	0,18	0,17	0,18	2,6	2,0	2,9
alcoholic beverages	0,09	0,11	0,08	0,3	0,3	0,4	0,11	0,07	0,13	0,3	0,2	0,5
services	3,24	4,98	2,58	12,5	13,7	11,7	4,07	5,57	3,51	12,3	12,6	12,2
of which:												
housing and communal services	0,88	1,66	0,59	27,2	33,3	22,9	1,27	1,84	1,05	31,2	33,0	29,9
including payments for :												

	I half of 2004						I half of 2005					
	Per 1 household member, somoni / month	of which:		Per 1 household member, in %	of which:		Per 1 household member, somoni / month	of which:		Per 1 household member, in %	of which:	
		Urban area	Rural area		Urban area	Rural area		Urban area	Rural area		Urban area	Rural area
dwelling space	0,05	0,13	0,02	5,7	7,8	3,4	0,06	0,07	0,05	4,7	3,8	4,8
communal services	0,83	1,53	0,57	94,3	92,2	96,6	1,21	1,77	1,00	95,3	96,2	95,2
o/w electric energy	0,43	0,48	0,42	51,8	31,4	73,7	0,55	0,59	0,54	45,5	33,3	54,0
personal services	0,21	0,36	0,17	6,5	7,2	6,6	0,27	0,34	0,26	6,6	6,1	7,4
o/w repair and individual manufacture of clothes and footwear	0,04	0,08	0,03	19,0	22,2	17,6	0,05	0,08	0,04	18,5	23,5	15,4
cultural and educational services	0,05	0,05	0,04	1,5	1,0	1,6	0,06	0,01	0,08	1,5	0,2	2,3
payments for education	0,19	0,56	0,05	5,9	11,2	1,9	0,23	0,60	0,09	5,7	10,8	2,6
payments for medical services	0,10	0,26	0,26	3,1	5,2	1,6	0,12	0,29	0,06	2,9	5,2	1,7
payments for treatment in sanatoria and health resorts, including rest												
transport services	1,70	1,89	1,66	52,5	38,0	64,3	1,96	2,20	1,88	48,2	39,5	53,6
communication services	0,03	0,08	0,01	0,9	1,6	0,4	0,06	0,13	0,04	1,5	2,3	1,1
legal services	0,01	0,02	0,01	0,3	0,4	0,4	0,04	0,03	0,04	1,0	0,5	1,1
Taxes, due, and other payments	0,69	1,88	0,24	2,4	4,7	1,0	0,90	2,66	0,23	2,4	5,4	0,7
Other expenditures	2,43	1,52	2,78	8,4	3,8	11,1	3,85	2,41	4,39	10,2	4,9	13,2

DISTRIBUTION OF HOUSEHOLDS AND POPULATION IN THEM BY PER CAPITA CONSUMER EXPENDITURES
in first half of 2004 (according to sampling household budget survey), in % (continued)

	Number of households surveyed	Population in them	Households consisting of:					Households having children below 16	of which households having			
			1 person	2 persons	3 person	4 persons	5 and more persons		1 child	2 children	3 children	4 and more children
Total number	925	5417	24	53	66	131	651	787	154	229	193	211

of which those with monthly per capita expenditures (somon) :

below 7,00	1,8	2,3					2,6	2,2	0,7	0,4	2,1	5,2
7,01-11,00	6,2	8,0			3,0	2,3	8,1	7,5	4,5	4,8	7,8	12,3
11,01-15,00	12,5	15,9	4,2	3,8		3,8	16,6	14,0	8,4	11,8	8,8	25,1
15,01-19,00	12,3	14,1	16,7	3,8	6,1	7,6	14,4	12,6	9,1	10,5	16,6	13,7
19,01-23,00	12,7	14,4	4,2	1,9	7,6	6,9	15,7	14,2	9,1	11,4	18,7	17,1
23,01-27,00	9,1	9,5	4,2	3,8	3,0	6,9	10,9	9,9	8,4	10,1	13,0	8,1
27,01-31,00	10,0	9,1		7,6	10,6	13,7	9,8	10,2	13,6	13,1	11,4	3,3
31,01-35,00	9,1	8,1	4,2	9,4	15,2	12,2	8,3	9,4	8,4	12,7	8,8	7,1
35,01-39,00	5,1	4,1	8,3	5,7	7,6	6,1	4,3	5,0	4,5	8,7	3,1	2,8
39,01-43,00	4,2	3,0		13,2	10,6	7,6	2,2	3,4	9,7	3,5	1,0	1,0
43,01-47,00	3,1	2,6	4,2	1,9	3,0	6,9	1,8	2,9	6,5	4,8	0,5	0,5
47,01-51,00	3,1	2,3	12,5	7,6	9,1	4,6	2,0	2,5	3,9	2,2	3,1	1,4
51,01-55,00	1,9	1,3	4,2	5,7	4,5	4,6	0,6	1,0	2,0	0,9	1,0	0,5
55,01-59,00	1,7	1,1	8,3	5,7	4,5	3,1	0,6	0,9	1,3	0,4	1,6	0,5
59,01-63,00	1,4	0,8	4,2	7,6	1,5	2,3	0,5	1,0	3,9	0,4	0,5	
63,01-67,00	1,5	1,2		3,8	6,1	3,8	0,5	1,0		2,6	1,0	
67,01-71,00	0,6	0,4	8,3	3,8	1,5		0,2	0,3				1,0
71,01-75,00	0,3	0,2		1,9	1,5	0,8		0,3	0,6	0,4		
75,01 and more	3,2	1,9	16,7	13,2	4,5	6,9	0,9	1,8	5,2	1,3	1,0	0,5

**DISTRIBUTION OF HOUSEHOLDS AND POPULATION IN THEM BY PER CAPITA CONSUMER EXPENDITURES
in first half of 2005 (according to sampling household budget survey), in %, continued**

	Number of households surveyed	Population in them	Households consisting of:					Households having children below 16	of which households having			
			1 person	2 persons	3 person	4 persons	5 and more persons		1 child	2 children	3 children	4 and more children
Total number	925	5460	23	45	67	134	656	783	165	221	200	197

of which those with monthly per capita expenditures (somoni) :

below 7,00	2,1	2,7			1,5		2,8	2,4	1,8	1,4	3,0	3,6
7,01-11,00	6,6	8,3			1,5	3,0	8,6	7,8	4,2	7,7	6,5	12,2
11,01-15,00	8,5	10,6		2,2		3,7	11,2	9,6	6,7	6,8	8,5	16,2
15,01-19,00	17,2	19,9	13,0	2,2	10,5	9,7	20,8	18,5	7,3	14,5	22,0	28,9
19,01-23,00	13,6	13,6	17,4	2,2	14,9	11,2	14,5	14,3	8,5	17,2	16,5	13,7
23,01-27,00	12,5	12,7	4,4	8,9	10,5	11,2	13,6	12,4	15,2	10,0	13,0	12,2
27,01-31,00	10,3	9,8	4,4	13,3	11,9	10,5	10,1	10,9	13,9	12,2	12,0	5,6
31,01-35,00	5,7	4,5		20,0	7,5	11,2	3,5	5,5	11,5	4,1	5,0	2,6
35,01-39,00	5,8	4,9	8,7	8,9	7,5	8,2	4,7	5,7	8,5	9,0	4,5	1,0
39,01-43,00	3,2	2,7	8,7	8,9	5,9	7,5	2,1	2,6	3,7	2,7	2,5	1,5
43,01-47,00	3,3	2,7	4,4	6,7	1,5	4,5	2,8	2,9	7,3	2,7	1,5	1,0
47,01-51,00	2,1	1,7		6,7	4,5	2,2	1,5	1,7	3,0	1,8	1,5	0,5
51,01-55,00	1,9	1,3	8,7	6,7	3,0	3,0	1,1	1,1	1,2	2,7	0,5	
55,01-59,00	1,7	1,2	4,3	2,2	5,9	3,0	0,6	0,8	1,8	0,9	0,5	
59,01-63,00	1,4	1,2		2,2	3,0	2,2	1,1	1,1	1,2	0,9	1,5	1,0
63,01-67,00	0,8	0,5			1,5	2,2	0,3	0,6		1,8	0,5	
67,01-71,00	0,7	0,3	13,0			1,5	0,2	0,4	0,6	0,9		
71,01-75,00	0,3	0,2			3,0		0,2	0,3		0,4	0,5	
75,01 and more	2,3	1,2	13,0	8,9	5,9	5,2	0,3	1,4	3,6	2,3		

APPENDIX 9. PER CAPITA CONSUMPTION OF FOOD IN THE REPUBLIC OF TAJIKISTAN
(according to sampling household budget surveys)
(per month, kg)

	<i>I half of 2004</i>			<i>I half of 2005</i>		
	Total	of which:		Total	of which:	
		Urban area	Rural area		Urban area	Rural area
Bread products	12,57	10,06	13,49	12,63	10,45	13,43
Potatoes	2,98	3,09	2,94	2,67	2,54	2,72
Vegetables and melons	6,06	6,14	6,02	5,42	5,61	5,34
Fruits and berries, including dry	1,38	0,68	1,64	1,60	0,82	1,89
Sugar and confectionary	0,77	0,88	0,73	0,83	0,93	0,79
Meat and meat products	0,46	0,59	0,41	0,52	0,66	0,47
Fish products	0,01	0,01	0,00	-	-	-
Milk and dairy products	4,55	2,78	5,21	4,76	2,86	5,47
Eggs (pieces)	2	3	2	3	2	3
Vegetable oil and margarine	0,88	0,92	0,86	0,97	1,01	0,95

**FOOD SECURITY AND POVERTY
INFORMATION BULLETIN
OF THE REPUBLIC OF TAJIKISTAN**

/ Edited by Shabozov M.Sh. - Chairman
of the State Committee on Statistics
of the Republic of Tajikistan
734025 Tajikistan, Dushanbe, Bokhtar Street, 17 /

Editorial board:

Shabozov M.Sh. - Chairman of Editorial Board
Mukhammadieva B.Z., Asoev A.A., Ashurov I.S., Baimatov K.F., Gukasova T.P.,
Abdulloev M.A., Jdanova L.V., Ziaeva M.A., Kislitsina E.A., Turaev B.T.

Responsible for:

- sections of the Bulletin

Vital and Employment Statistics	Kislitsina E.A.	27-80-88
Social Statistics	Budnikova E.V.	27-94-88
Prices, Household Budgets and Poverty Statistics	Turaev B.T.	27-56-28
Finances	Pulatova N.T.	27-98-71
Gross Domestic Product	Ziaeva M.A.	27-98-71
Trade, External Activity	Jdanova L.V.	23-32-48
Agriculture	Abdulloev M.A.	27-43-29
Nature and Environment Statistics	Norov K.	27-82-66

-preparation of main document, systematization of parts, and design:

Economic Analysis and International
Relations Department
Gukasova T.P.
Tel. 21-23-87
e-mail: stat@tojikiston.com

-publication:

Chief of Central Computer Center
of the State Committee on Statistics
of the Republic of Tajikistan
Baimatov K.F.
Tel: 27-96-09