

**STATE COMMITTEE ON STATISTICS
REPUBLIC OF TAJIKISTAN**

INFORMATION BULLETIN

**FOOD SECURITY AND POVERTY
IF THE REPUBLIC OF TAJIKISTAN**

№ 2 / 2005

Dushanbe - 2005

Statistical service is one of the effective methods for establishing the order and evaluation of prospects of economic agents activity. Under the conditions of market economy, it is not possible to insure the sustainable development without proper accounting, work analysis and resource planning.

In this respect, and in accordance with legislation, all enterprises, organizations, institutions, and all production and non-production subjects, independently of their form of ownership, have to submit all required complete and accurate reports in due time to the statistical bodies. Thereby, statistical recording is to be indispensable, complete and unexceptional on the whole territory of the republic.

Relevant state authorities have to take required actions to bring accounting system into the line with international standards.

E.SH.RAHMONOV

Introduction

In accordance with European Commission Matrix on Policy Reform of Memorandum of Understanding on Food Security Program in the Republic of Tajikistan the decision about preparation and publishing of Quarterly Food Security Bulletin was made to ensure system of reliable operative information and analysis of current food security situation in the Republic of Tajikistan.

“Food security presumes that all people have access, at all time, to sufficient food required for an active and healthy life. Food security also means physical availability of food in sufficient quantities, accessibility of those foodstuffs for households (through the market and other sources, that suppose sufficient purchasing power), as well as consumption of food in quantities required for satisfying of nutritional needs”.

The purpose of the Bulletin is to bring together and systematize available information on food security in Tajikistan; i.e. the availability of food in the republic and outlook for food production, indicators on access to food, food use and utilization. The Bulletin also contains analysis of current food security situation in the Republic.

The base indicators for Food Security Bulletin are production of food, food availability and accessibility, areas under crops, agricultural production and productivity, main climatic conditions, health indicators, water supply, prices, and quantitative indicators reflecting situation on food market.

The Appendices to the Bulletin show indicators of Poverty Reduction Strategy Paper, detailed information on the access to food of various socio-economic groups of the population for 2003, 2004, and first quarter and first half of 2005, as well as estimated data on food balance for the first, second, third and fourth quarters of 2004 and the first and second quarters of 2005.

The presented Quarterly Food Security Information Bulletin of Tajikistan was prepared by State Committee on Statistics with participation of key Ministries and Departments as well as non-government organizations (Ministry of Finance, Ministry of Health Care, Ministry of Labor and Social Protection of Population, Ministry of Education, Ministry of Communication, Ministry of Transport, Social Protection Fund, Hydrometeorological

Agency under the Committee for Nature and Forestry Protection of the Republic of Tajikistan, etc.). The publication is prepared with technical and financial support of European Commission in the Republic of Tajikistan.

The publication is intended both for specialists and all interested persons.

All recommendations, suggestions and remarks related to the content of the Bulletin should be addressed to the State Committee on Statistics of the Republic of Tajikistan at the following address:

17 Bokhtar Street, Dushanbe, 734025, Tajikistan

Tel.: (992 372) 212387, Fax: (992 372) 214375

E-mail: stat@tojikiston.com

http:// www.stat.tj

CONTENTS

Introduction	3
Overview	7
CHAPTER I. SOCIO-ECONOMIC INDICATORS	9
1.1. Gross Domestic Product.....	9
1.2. Price and Tariff Indices.....	10
1.3. Foreign trade	11
1.4. Labor market	11
CHAPTER II. AVAILABILITY OF FOOD	12
2.1. Growth in agricultural production.....	12
2.1.1 Outlook of agricultural production	12
2.1.2 Spring crops	14
2.1.3. Livestock production	15
2.1.4. Provision of feed.....	16
2.2. Producer prices.....	17
2.3. Trade in basic foodstuffs.....	19
2.4. Availability of food per capita	20
CHAPTER III. ACCESS TO FOOD.....	21
3.1. Retail prices.....	21
3.2. Incomes and Expenditures	22
3.2.1. Incomes.....	23
3.2.2. Expenditures	23
3.3. Social protection and the vulnerable groups of population	25
3.3.1 Social protection in the Republic of Tajikistan	25
3.4. Food insecurity: households with spend more than 70% of expenditures on food	26
CHAPTER IV. USE AND UTILIZATION	26
4.1. Consumption of food products by the population.....	27
4.2. Food security indicators not related to income	28
4.2.1. Population morbidity.....	28

4.2.2 Nutritional status of the population.....	30
METHODOLOGY	32
Glossary	34
List of abbreviations	34
Appendix 1. Review of hydro-meteorological conditions of the Republic of Tajikistan during third quarter of 2004.....	35
Meteorological conditions	35
Hydrological conditions.....	37
Review of snow slides and mudflows.....	38
Appendix 2 PRSP Indicators in the Republic of Tajikistan.	39
Appendix 3. Changes in average wholesale prices in Tajikistan	44
Appendix 4. Changes in average consumer prices in Tajikistan.....	45
Appendix 5. Food balance	47
Appendix 6. Money incomes, expenditures and consumption of households, by decile population groups in the Republic of Tajikistan in 2002-2003	51
Appendix 7. Distribution of households and population in them by per capita income in the Republic of Tajikistan.....	52
Appendix 8. Structure of average monthly expenditures of population in the Republic of Tajikistan	53
Distribution of households and population in them by per capita consumer expenditures.....	55
Appendix 9. Per capita consumption of food in the republic of Tajikistan	57

OVERVIEW

According to preliminary estimates, growth of real Gross Domestic Product (GDP) was positive and amounted to 8.1% in the first half of 2005 as compared to the first half of 2004. The biggest impact was due to the increase of production in agriculture, industry and trade. The value of gross agricultural output in the first half of 2005 increased by 6.8% as compared to the corresponding period of the previous year, of which output of plant products increased by 9.4%, and output of animal products increased by 4.4%. Production of grain in the first half of 2005 as compared to the first half of 2004 increased by 6.9%, production of vegetables increased by 6.3%, melons - by 13.8%, and fruits - by 1.8%. During this period, production of potato decreased by 2817 tons (or 1.9%), and grapes - by 432 tons (or 20.9%). Production of milk decreased by 1.6%. Imports of vegetables also decreased by 40%, milk and dairy products - by 20%, and spaghetti, noodle, etc - by 24%.

Monthly inflation rate in consumer's sector made up 0.68% (against 0.17% in the corresponding period of the previous year). In the first half of 2005, the increase of prices of foods outpaced those of non-foods.

From the beginning of 2005 the highest increase of prices was registered for cabbage, carrot, rice, potatoes, apples, evaporated milk formula, condensed milk, as well as spaghetti and semolina. Increase in prices of potato was caused by less planting (as compared to the previous year), as well as weather conditions and late maturing. As a result, production of potato decreased by 2% as compared to the corresponding period of the previous year.

Imports of wheat increased by 3.6 times as compared to the first half of 2004, but this fact did not stimulate the decrease of wheat retail prices. Imports of flour increased by 1.4 times amounting to 159.1 thsd.tons (against 93.0 thsd.tons in the first half of 2004). During this period the price of light wheat flour decreased by 0.4%.

The most important sources of cash incomes of households continue to remain labor incomes - 57% and receipts from sales of agricultural products - 17.4%. In the first quarter of 2005, the gap between the average incomes of the highest and the lowest income deciles amounted to 11.6 times. In the first quarter of 2005, average expenditures of population have risen mainly due to increase in prices, and in total structure of household's expenditures, expenditures for food, bread and bread products occupies the first place (26.9%). In all regions of Tajikistan consumption of bread and bread products exceeds approved medical norm by 16%.

The average accrued monthly wages and salaries of employees in June 2005 amounted to 91.10 somoni and was higher by 7.7% than in May 2005. As compared to June 2004, it increased by 1.5 times.

In real terms (deflated by the CPI), monthly wages and salaries increased by 7.4% in June 2005 as compared to May 2005. And as compared to June 2004, they increased by 36.3%.

As of the end of June 2005, total arrears in salary payments for the republic made up 27.9 mln.somoni.

In the first quarter of 2005, the amount of actually paid lump-sum birth benefits increased by 1.7 times, and amount of child benefits increased by 1.6 times. In 2005 compensations to low-income families with children studying in secondary schools covered 25% of all pupils.

The greatest number of cases of infectious diseases falls on spring and summer periods when population consumes more water and fresh vegetables and fruits. In this period, incidence of tuberculosis and brucellosis, caused by infected animal food is increasing. Share of acute enteric infections in total number of infection diseases was 70%, for children of 0-14 years old, this indicator reached 86.5%.

According to Republican Nutrition Center under the Ministry of Health Care of the Republic of Tajikistan, the following typical nutritional disorders, having significant health influence, were discovered during nutritional status survey among pupils: poor vitamins A, B2, iron and calcium, etc. intake, caused by lower consumption of animal origin products; incidence of iron deficiency among pupils aged 15 was 46% for girls and 42% for boys; a diet of surveyed pupils is characterized by extraordinary sameness and poor variety of products

CHAPTER 1. SOCIO-ECONOMIC INDICATORS

The mentioned below socio-economic indicators depict overall economic situation in the country, required for analysis of food security situation.

1.1 GROSS DOMESTIC PRODUCT

According to preliminary estimates, growth of real Gross Domestic Product (GDP) was positive and amounted to 8.1% in the first half of 2005 as compared to the first half of 2004. The biggest impact was due to the increase of production in agriculture, industry and trade.

Table 1: Main socio-economic indicators

	2003	2004 ¹	<i>1 quarter of 2004</i>	<i>1 quarter of 2005</i>
Population (million)	6,6	6,8	6.7	6.8
Nominal GDP (mln.somoni)	4757,8	6157,5	2354,5	2796,3
of which (in %):				
agriculture	25,2	21,6	12,6	13,2
industry	20,9	19,6	24,9	21,5
services	38,6	42,3	45,4	47,7
GDP per capita (somoni)	724,0	910,0	x	x
GDP growth , in % to the corresponding period of the previous year	10,2	10,6	11,1	8,1
State budget deficit / surplus (as percentage of GDP)	1,1	-0,9	1,0	0,5
Consumer Price Indices (CPI), in % to the corresponding period of the previous year	117,1	106,8	105,2	107,1
Price Indices for foodstuffs	115,8	105,0	102,3	108,3
Price indices for services	140,8	117,3	120,7	106,0
Exchange rate of somoni (per 1 US Dollar)	3,0607	2,9711	2,9216	3,0563
Officially registered unemployment rate	2,4	2,2	2,2	2,0
Number of registered unemployed, thsd.persons	46,9	41,6	42,5	40,5

	2003	2004 ¹	1 quarter of 2004	1 quarter of 2005
in % to the corresponding period of the previous year	98,9	88,7	90,2	95,3
Monthly average wages and salaries (somon)	44,61	61,81	53,20	81,57
in % to the corresponding period of the previous year	137,0	138,6	136,6	153,3
Trade balance (mln.USD)	-83,1	-460,3	-148,0	-209,3
Share of food in total imports, %	9,2	9,4	2,4	2,7
Share of food in total exports, %	3,3	3,0	8,9	12,4

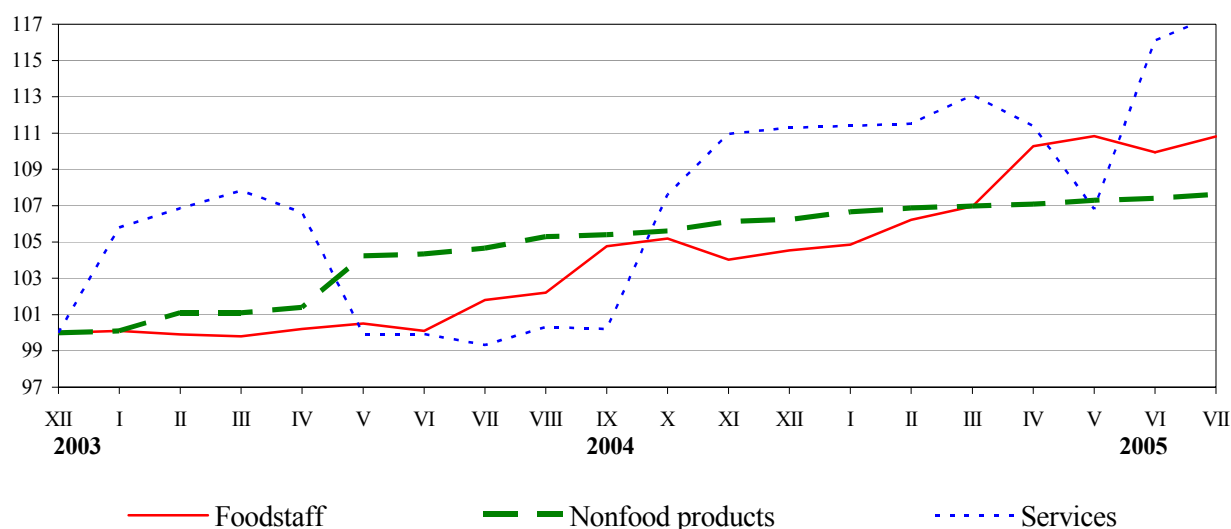
Source: State Committee on Statistics

1) preliminary data

1.2. Price and Tariff Indices

In the first half of 2005, consumer price index constituted 104.1%, of which for foodstuff - 105.0%, non-food products - 101.1%, and paid services to population - 104.4%. Monthly inflation rate in consumer's sector made up 0.68% (against 0.17% in the corresponding period of the previous year).

Graph 1: Consumer price indices for foodstuff, non-food products and paid services (at the end of each month, in % to December 2003)



During first half of 2005 the increase of prices of foods outpaced those of non-foods. More detailed information on prices of food is available in the section 3 “Access to food”.

1.3 Foreign trade

In the first half of 2005, foreign trade turnover of the Republic of Tajikistan was valued at 1033,7 million USD. The value of exports¹ amounted to 430,4 million USD decreasing by 5,4% as compared to the first half of 2004. The value of imports² amounted to 603,4 million USD increasing by 7.9%. The gap between exports and imports determined the deficit of trade balance valued at - (minus) 173,0 million USD. The deficit of trade balance with CIS countries constituted -306,5 million USD; the trade balance with other countries of the world was positive 133,5 million USD.

Major export goods were aluminum, cotton, electric power, precious and semiprecious stones and metals.

Major import goods were chemical industry products, electric power, machines and equipment as well as plant products, such as wheat, flour, sugar and vegetable oil.

1.4 Labor market

According to the data of the Ministry of Labor and Social Protection of the Republic of Tajikistan, the number of unemployed active (working-age) citizens, registered in employment offices as looking for a job, as at the end of June 2005 amounted to 84.9 thsd.persons, and decreased by 12.1% as compared to the similar date of last year. In January - June 2005, 33.4 thousand persons were registered in employment offices as looking for a job, and a total of 11.9 thousand persons were provided with jobs.

As at the end of June 2005, the number of vacancies, offered by enterprises made up 19.1 thousand. Thus, there were 4 candidates for each vacancy.

Among all persons registered as looking for a job, 42.9 thousand people were granted the official status of unemployed as at the end of June 2005.

In the 1st half of 2005, 1.9 thousand officially registered unemployed were offered professional training. 11.7 thousand people were sent to public paid works. The share of people registered as unemployed receiving unemployment benefit accounts for 4.9% (2.1 thsd.persons).

¹ Exports in FOB prices – the price of goods which includes its value as well as all costs of delivery to the border of the exporting country.

² Imports in CIF prices – the price of goods that includes its value as well as transportation and insurance costs to the border of the exporting country.

CHAPTER II. AVAILABILITY OF FOOD

Availability refers to the physical presence of food as a result of domestic production or market operations. On country level availability of food is determined by combination of food stocks, commercial imports, food aid and domestic production. The availability is also determined by the following elements: weather conditions, crop yield, livestock and productivity, producer prices for food, food prices in neighboring countries, as well as national policy defining production, trade, distribution and pricing.

2.1. Growth in agricultural production

The value of gross agricultural output in the first half of 2005 was 517.7 mln.somoni (at current prices) which is higher by 6.8% than the output at the corresponding period of the previous year, of which plant products - 258.5 mln.somoni or higher by 9.4% as compared to the corresponding period of the previous year; and animal products - 259.2 mln.somoni or higher by 4.4%. The largest share in gross agricultural production belongs to Khatlon (55.0%) and Sogd (24.3%) Oblasts.

2.1.1. Outlook for agricultural production Climate influence on crop production

In **April**, the coldest weather was registered on 5-11 April. During the month, the level of Sarez lake, Nurek and Kayrakkum reservoirs decreased.

Second and third decades of the **May** were characterized by lower temperature conditions. Heavy rainfalls accompanied by storms were observed on 8-9 May, and were the most intensive in Gissar valley, where they amounted to 40-52 mm for a night. Snowfalls were registered in mountains of Sogd oblast on 19 May. In some places snowfalls were heavy (29 mm per a day in Darvaz regions). Intensive thunderstorm activity was registered in valleys and foothills (24 days).

The first part of **June** was characterized by cool weather. The peak temperature in valleys didn't exceed 22-27 degrees. But the coldest weather was registered on 9-12 June, when the mean daily temperature was below the norm by 4-9 degrees and amounted to 20-25 degrees.

Fall-outs of various intensity were infrequent. High water content was observed on the rivers of GBAO, Pyandj and Vakhsh regions as well as rivers of southern slope of Gissar range in **June** 2005. Monthly water discharge of the most rivers of the republic was

within and above the norm (110-210%). In the second decade of the month the peak water discharge exceeded the maximum long-term average values by 10-80%.

On 23 June the ingress of warm air from south-west was registered: air temperature increased up to 41 degrees in Dushanbe, 46 degrees in Isambay that caused intense snow dissolution. As a result, floods were observed in all rivers of the republic, water discharge was 150-250% of the norm. In some places mudflows were registered, since the water contained mass of clay, sand, and stones. These flood flows caused significant economic losses for the republic

Table 2: Water reservoirs as of 30 June 2005

<i>Water reservoirs</i>	<i>Changes during the month</i>	<i>Volume of water in 2005</i>		<i>Volume of water in 2004</i>	
	<i>mln. cubic meters</i>	<i>mln. cubic meters</i>	<i>in % to total capacity</i>	<i>mln. cubic meters</i>	<i>in % to total capacity</i>
Kayrakkum	-0,167	3320	79,8	3374	81,1
Nurek	+2,332	8421	80,2	8031	76,4

The weather reports prepared by the Hydrometeorological Agency of the Republic of Tajikistan for the second quarter of 2005 are attached at Appendix 1.

Table 3: Sown area
(*thsd.ha*)

	2003	2004	2004	2005	2004	2005
			<i>1 quarter</i>		<i>1 quarter</i>	
Sown area	886,9	905,6	302,1	251,6	896,4	900,4
Winter crops	187,2	163,7	87,0	112,6	168,8	184,3
Cereal crops	187,2	163,6	87,0	112,6	163,4	181,2
wheat	177,1	152,1	87,0	112,6	151,8	167,7
barley	9,9	11,4	-	-	11,4	13,5
Spring crops	699,7	741,9	155,2	215,0	733,0	716,1
Cereal crops	217,4	240,1	110,0	126,7	231,6	214,4
wheat	157,8	170,7	97,4	107,1	169,1	150,3
barley	27,6	37,5	11,0	18,8	31,6	31,1

Source: State Committee on Statistics

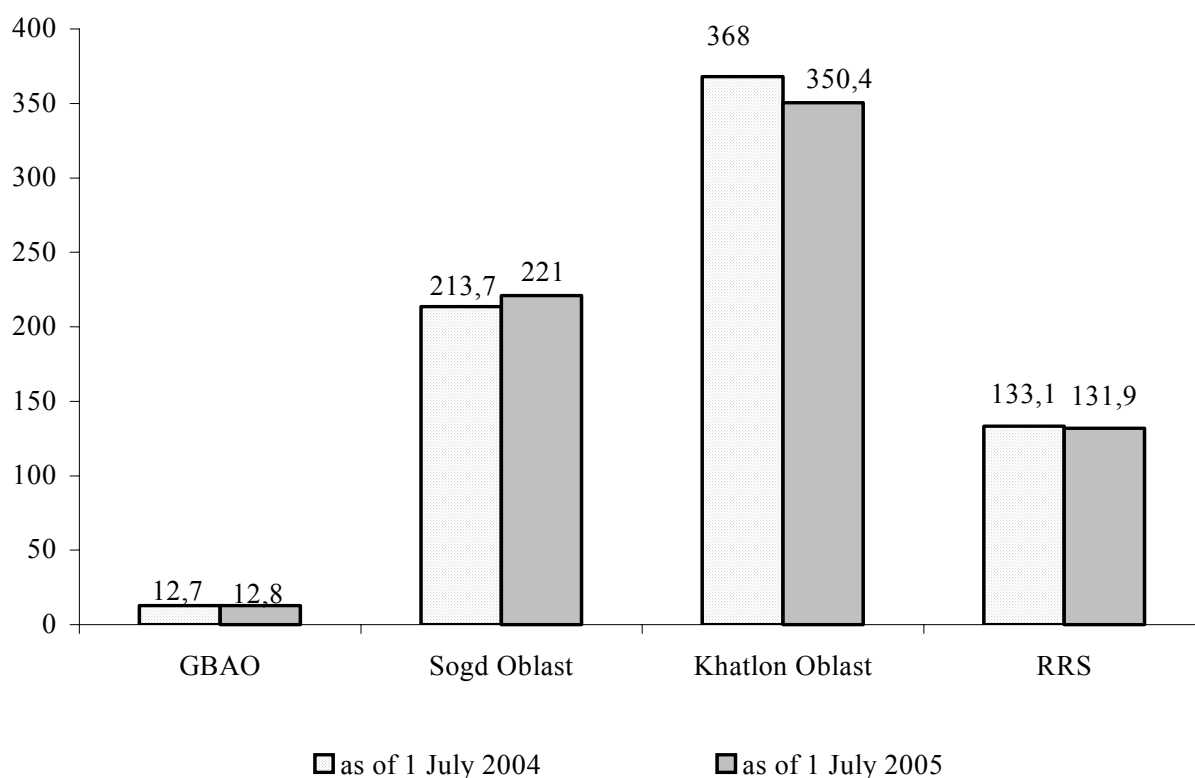
The share of areas under cereals and leguminous cultures accounts to 44.0% of all sown areas, under technical cultures - 37.0%, of which under cotton - 32.0%, under feed crops - 12.0%, under potatoes, vegetables and melons - 8.0%.

2.1.2. Spring crops

At the beginning of July of the current year, spring crops were sown on an area of 716.1 thousand ha, or 98% of the areas under spring crops at the corresponding time last year. Rates of sowing of spring crops by Oblasts are presented in Graph 2.

Graph 2: Area under spring crops

(thsd.ha)



The area sown to potatoes amounted to 27.5 thsd.ha which is less by 987 ha than at the corresponding time last year. Similarly, vegetables were sown on 33.5 thsd.ha that is by 1.2 thsd.ha higher than in the corresponding period of the last year.

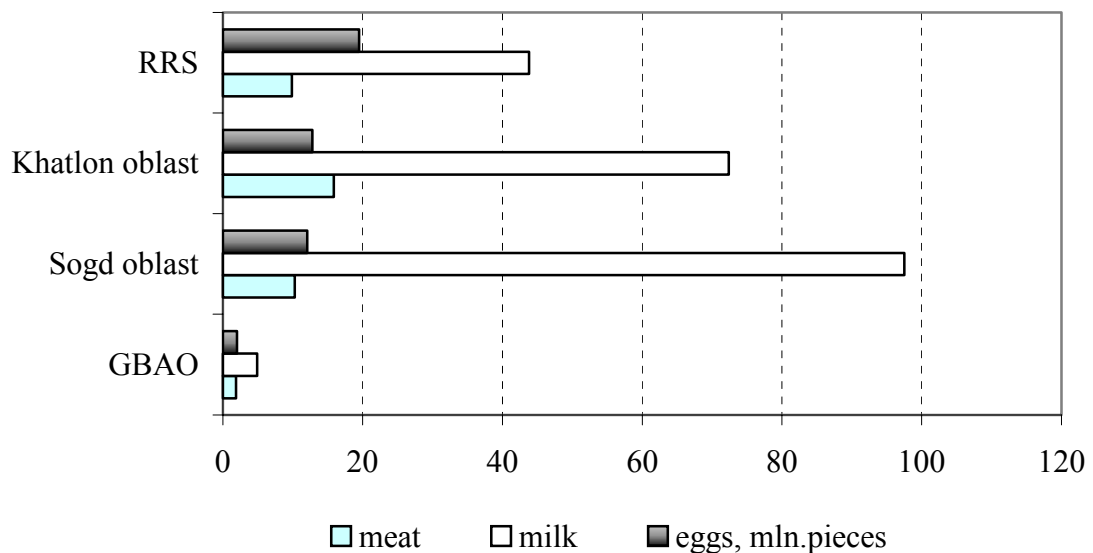
In the first half of 2005 production of grain increased by 6.9% as compared to the corresponding period of the previous year, production of vegetables increased by 6.3%, melons - by 13.8%, and fruits - by 1.8%. During this period, production of potato decreased by 2817 tons (or 1.9%), and grapes - by 432 tons (or 20.9%)

2.1.3. Livestock production

As of 1 July 2005, the number of cattle in farms of all categories increased by 6.2% as compared to the similar date of the previous year; the number of sheep and goats increased by 9.9%, poultry – by 12.2%. The increase in number of poultry is observed in farms of Sogd Oblast (by 13%), Khatlon Oblast (by 14.6%), regions of republican subordination (by 9.8%).

In the first half of 2005, farms of all categories produced 37.9 thsd.tons of meat (live weight) or 100.7% to the corresponding period of the previous year. They have also produced 218.5 thsd.tons of milk (98.3%), 46.5 mln.pieces of eggs (128.9%).

**Graph 3. Production of main live-stock products
in all categories of farms in the first half of 2005, thsd. tons**



In the first half of 2005 the average milk yield per cow was 811 kg increasing by 1% as compared to the previous year.

In average, 41 calves were received from every 100 female cows in the first half of 2005.

For the reporting period, the average output of eggs from 1 laying hen reached 60 eggs (or 76% of the level of 2004). Laying ability in farms of Sogd oblast increased by 9%.

Table 5: Main indicators of livestock production in the Republic of Tajikistan

	2003	2004	1 quarter		1 quarter	
			2004	2005	2004	2005
Production, thsd.tons						
Meat (slaughtered)	44,6	48,2	6,8	7,3	21,0	21,1
of which:						
Beef and veal	20,0	21,8	3,0	3,3	9,2	6,5
Mutton and goats meat	22,0	23,8	3,4	3,6	10,5	10,4
Poultry	0,5	0,5	0,1	0,1	0,4	0,3
Other meat	2,0	2,1	0,3	0,3	0,9	0,9
Milk	459,2	489,5	93,7	98,1	221,3	218,5
Eggs, mln.	57,4	77,7	15,9	22,2	36,0	46,5
Productivity						
The average milk yield per cow, kg	1592	1573	352	359	805,0	811,0
The average output of eggs per laying hen, pieces	112	261	33	33	79	60

Source: State Committee on Statistics

2.1.4 Provision of feed

As of 1 July 2005 agricultural enterprises and (dekhkan) farms stored 191,1 thsd.tons of forage (or 28% of planned), of them: 62,9 thsd. tons (or 28%) of hay, 80,8 thsd.tons (50%) of haylage, 55,5 thsd.tons (17%) of straw and other forage, 5,8 thsd.tons (2%) of succulent feed, including 0,4 thsd.tons (1%) of root crops and feed melons, and 5,4 thsd.tons (2%) of ensilage.

The total provision of feed in feed units amounts to 70,4 thsd.tons that accounts for 24% of planned value. The number of feed per 1 conventional head makes up 2.7 centners.

2.2. Producer prices

Table 6: Changes in producer prices

(somoni / kg)

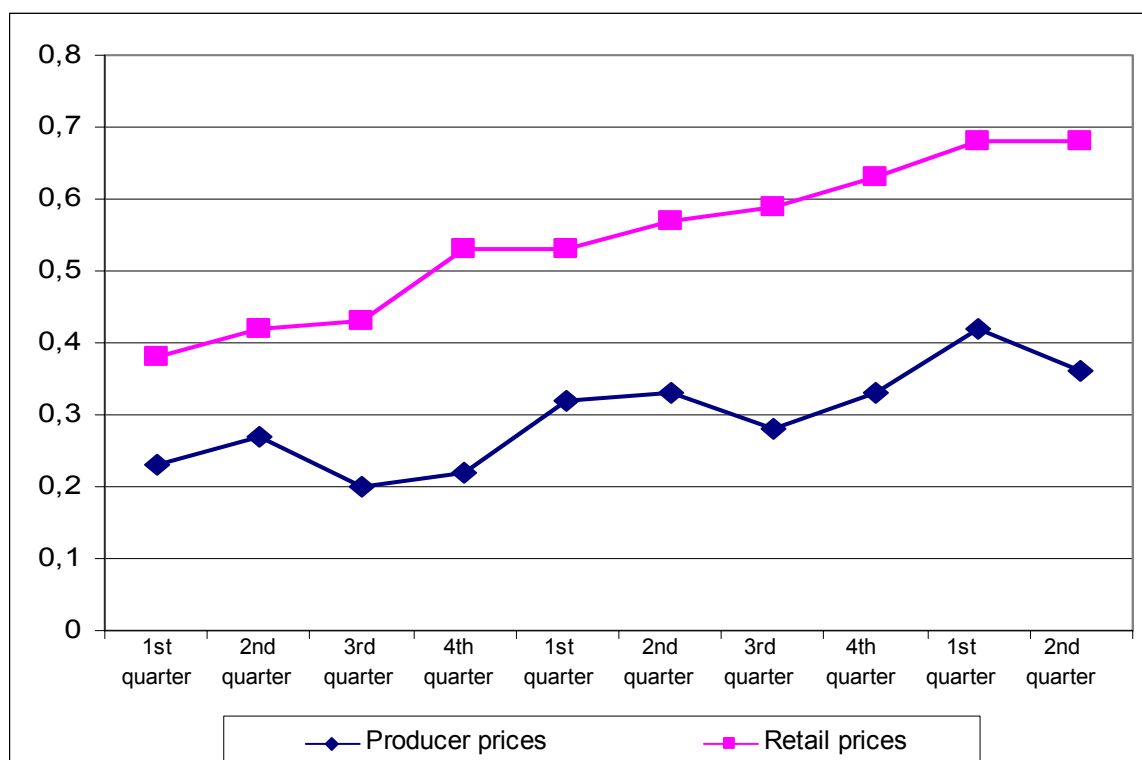
	2003				2004				2005	
	I q.	II q.	III q.	IV q.	I q.	II q.	III q.	IV q.	I q.	II q.
Wheat	0,23	0,27	0,20	0,22	0,32	0,33	0,28	0,33	0,42	0,36
Milk	0,25	0,25	0,21	0,21	0,32	0,32	0,31	0,29	0,42	0,41
Potatoes	0,26	0,27	0,19	0,20	0,18	0,27	0,17	0,18	0,19	0,19

Source: State Committee on Statistics

In spite of the growth of wheat imports by 1.5 times during the first quarter of 2005, prices of wheat increased by 31.3% (wholesale prices) and 17.3% (retail prices) as compared to the first quarter of 2004. In the first half of 2005, imports of wheat increased by 3.6 times as compared to the first half of 2004, but this fact did not stimulate the decrease of wheat retail prices (See Table 6 and Graph 4).

Graph 4. Trends in producer and retail prices of wheat

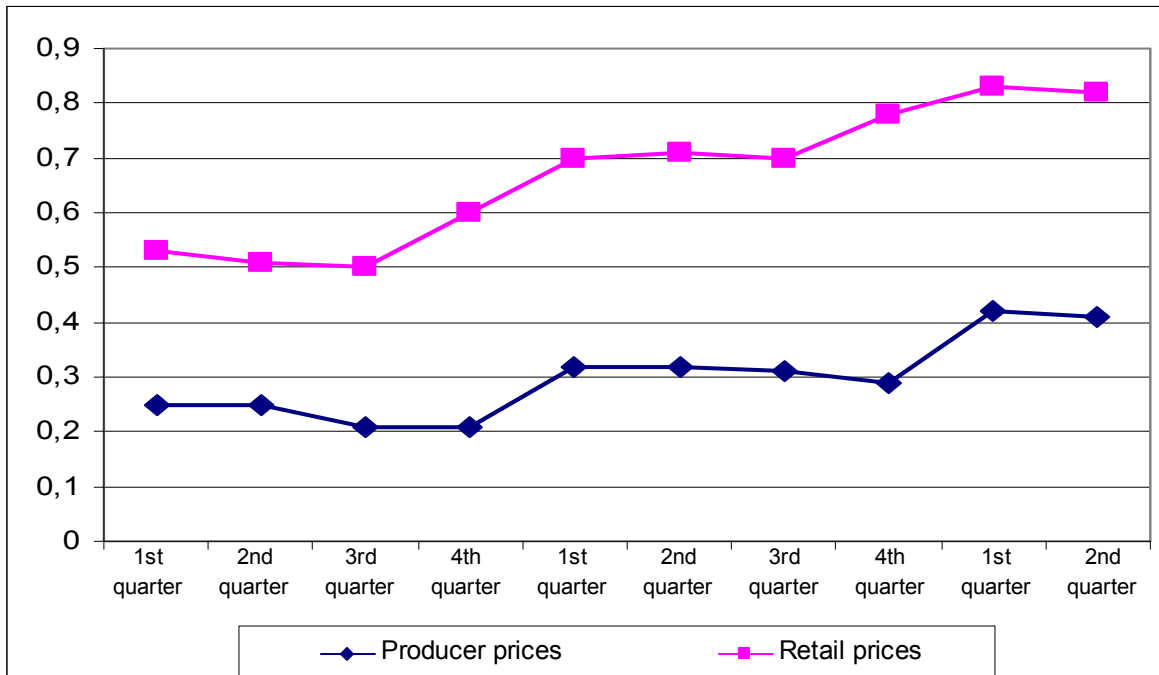
(somoni/kg)



In 2005, the prices of milk continue to fluctuate seasonally. However, in the first quarter of 2005 the increase in prices of milk was registered as compared to the similar period of the previous year. In the second quarter producer's prices of milk decreased, but retail prices remained at the first quarter's level (See Graph 5).

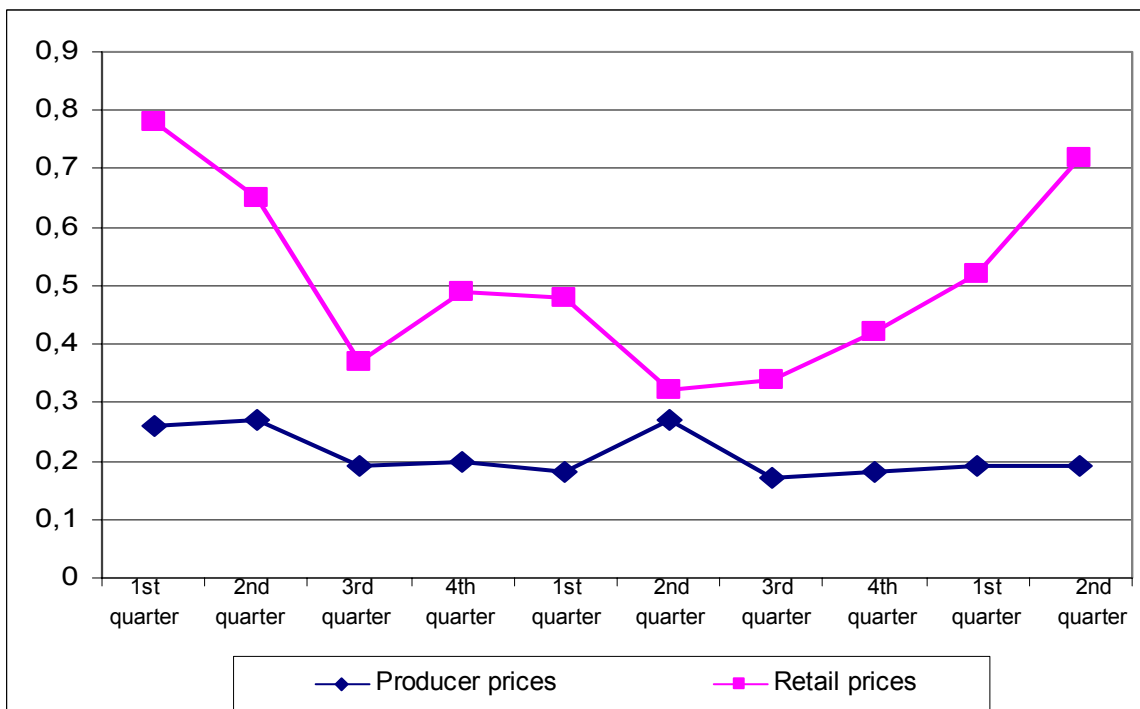
Graph 5. Trends in producer and retail prices of milk

(somon/kg)



Graph 6. Trends in producer and retail prices of potatoes

(somon/kg)



The given graphs show that change in retail prices is higher than in producer ones. This trend is specific for all types of agricultural products. Usually, in second quarter of a year prices of potatoes come down, but in the second quarter of 2005, they increased significantly due to bad weather conditions and late maturing (See Appendices 3 and 4).

2.3. Trade in basic foodstuffs

Share of food products in the total value of exports of Tajikistan accounted for 2.4% and 2.7% in the first half of 2004 and 2005, respectively. The share of food products in total volume of imports was higher by more than 3 times and accounted for 8.9% and 12.4%, in the first half of 2004 and 2005, respectively.

The major food products imported to the Republic of Tajikistan were wheat and flour (the greatest share), as well as sugar, vegetable oil, tea, meat, flour products (macaroni, noodles, bread, cakes, pastries), vegetables, fruits and others.

Imports of food products in the first half of 2005 increased by 1.5 times as compared to the first quarter of 2004. However, there are some fluctuations in the structure of imports. Thus, in the first half of 2005 as compared to the first half of 2004, the imports of vegetables fell by 40%, milk and dairy products - by 20%, spaghetti, noodles and other pasta - by 24%, while the imports of wheat increased by 3.6 times, amounting to 145.0 thsd.tons (against 34.6 thsd.tons in the first half of 2004), and imports of flour increased by 1.4 times amounting to 159.1 thsd.tons (against 93.0 thsd.tons in the first half of 2004).

Table 7: Exports and Imports of basic food products

(thsd.tons)

	<i>I half of</i>			
	<i>2004</i>	<i>2005</i>	<i>2004</i>	<i>2005</i>
	<i>Exports</i>		<i>Imports</i>	
<i>Food products</i>	44,8	42,8	231,1	418,0
of which				
wheat	-	-	34,3	145,0
flour	-	-	93,4	159,1
sugar	-	-	45,8	48,1
spaghetti, noodles, elbow and other products	-	-	3,6	3,9
vegetable oil	-	0,0	15,1	18,2
milk and dairy products	-	-	0,6	0,9
meat and meat products	-	-	2,8	5,3
eggs	-	-	1,4	1,8
tea	-	-	2,6	3,2
vegetables	12,6	5,7	2,7	0,9
fruits and berries	17,7	24,5	3,9	1,9
products received by processing of vegetables and fruits	8,8	9,6	1,6	1,1
potatoes	0,1	0,2	0,6	0,2
onion	8,1	2,1	-	0,2
Share of food products in total volume, %	2,4	2,7	8,9	12,4

2.4. Availability of food per capita

The availability of food per capita is calculated using a food balance. A food balance shows for each basic food commodity, the total physical availability and utilization of that foodstuff over a given period of time, usually 1 year. **Total physical availability** is the sum of stocks at the beginning of the period, production and imports of that commodity in a given period of time. **Total utilization** covers use for human consumption + use as animal seed + seed + losses + exports + stocks at the end of the period. In any one period, the availability and utilization of the same commodity must balance. Drawn up over a succession of years, food balances usually reveal a trend in total availability, imports, exports, and the availability of food for human consumption and for feed use. Dividing the annual amount of food available for human consumption by the population gives a key indicator of availability: the average availability of food per capita per year. This measure of food availability is a national average, which takes no account of households' access (i.e. ability to produce, purchase or otherwise obtain) to food.

Table 8: Developments in Per Capita Availability of Basic Foodstuffs

(per capita, kg / month)

	2003	2004	1 quarter of 2004	1 quarter of 2005
Bread products (expressed in grain)	13,1	13,0	13,1	12,6
Potatoes	2,5	2,9	2,7	2,8
Vegetables and melons	6,5	6,4	5,0	5,1
Fruits and berries	2,3	3,8	1,0	1,6
Sugar and confectionery items	0,8	0,8	0,7	0,8
Meat and meat products	0,6	0,6	0,5	0,6
Milk and dairy products	4,2	4,0	3,6	3,7
Eggs (pieces)	2	2	2	2
Vegetable oil	0,9	1,0	0,9	1,0
Fish and fish products	0,01	0,01	0,01	0,00

Source: Household budget survey

The analysis of food balances shows that food availability remains stable during last three years (See Table 8)

More detailed information is available in Appendix 5 “Food balance”.

CHAPTER III. ACCESS TO FOOD

Access to food refers to the ability of households to obtain adequate safe and appropriate foods to meet their needs for a healthy and active life. Access can be through production for own consumption, market purchases or donations / transfers.

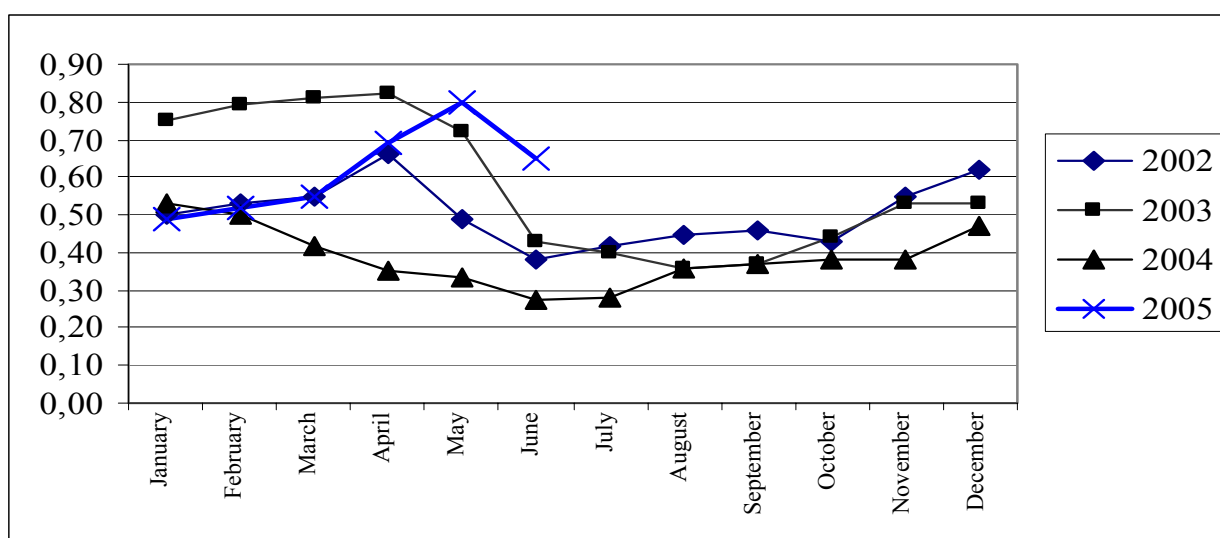
3.1. Retail prices

In the second quarter of 2005, the retail prices of most basic foodstuffs increased significantly as compared to the first quarter of 2005 (See Appendix 4).

From the beginning of 2005 the highest increase of prices was registered for cabbage (85.4%), carrot (53.2%), rice (43.9%), potatoes (36%), apples (10.9%), evaporated milk formula (8.1%), condensed milk (2.4%), as well as spaghetti and semolina (2%).

At the same time, the highest decrease of prices was registered for onion (29.7%), eggs (9.1%), buckwheat (3.1%), cotton oil (3%), milk (2.8%), mutton (2.1%), animal oil (0.6%), and light wheat flour (0.4%).

Graphs 7: Average monthly retail prices for potatoes (somon / kg)



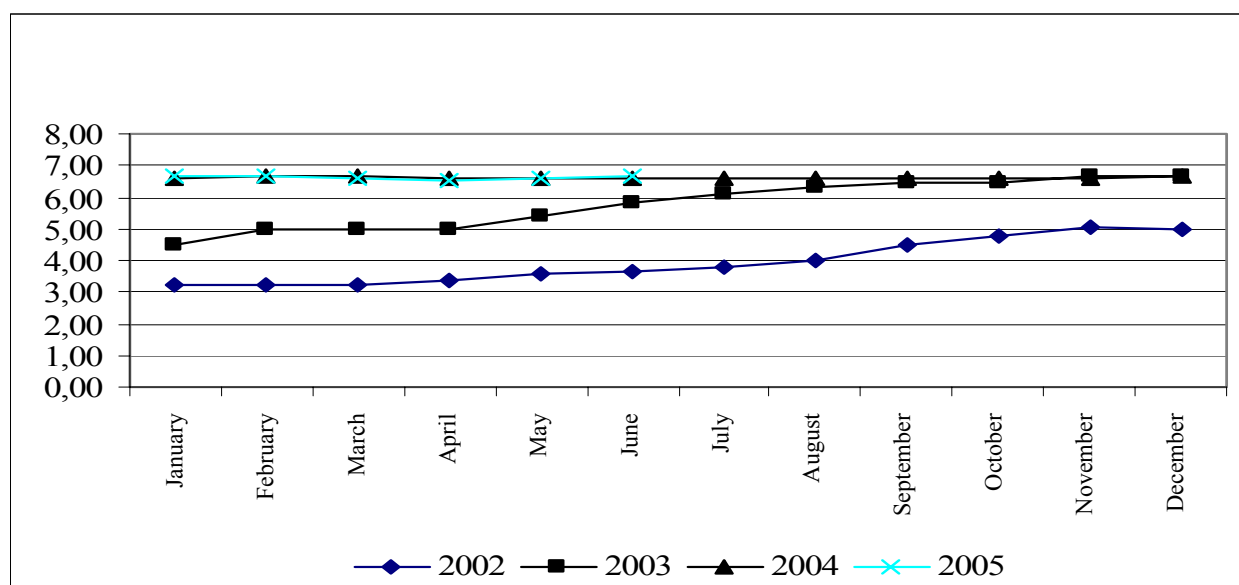
Potatoes. Retail prices of potatoes are subject to seasonal fluctuations and also to fluctuations in supply and demand. The highest seasonal price is normally recorded in the second quarter of each year, prior to the first new harvest. During the second quarter of the current year, the prices of potatoes increased significantly as compared to the previous years, due to weather conditions and late maturing. During the period from January to March 2005, the prices of potatoes increased by 15.8%, and during the period from March to June they increased by 18% and amounted to 0.52 somoni/kg in the first

quarter and 0.71 somoni/kg in the second quarter of 2005 (average for republic).

Flour. In 2004 prices of flour remained stable - 1.00-1.02 somoni/kg. And this trend continues to remain in the first and second quarters of 2005 as well (1.02 somoni/kg)

Beef and other kinds of meat. During 2004 the prices of beef remained stable. In March 2005 the prices of beef decreased by 1% as compared to the previous month and constituted 6.58 somoni per kilogram. In June, the prices increased by 1.5% as compared to May 2005 and amounted to 6.68 somoni/kg. The average price of mutton was 8.11 somoni/kg in the first quarter of 2005, but in the second quarter it decreased and was 7.93 somoni/kg.

Graph 8: Average monthly retail prices for beef (somon / kg)



3.2. Incomes and expenditures

The source of information on household incomes and expenditures is the Household Budget Survey which is conducted on the basis of a monthly survey of 925 households and is comprised of the following: demographic information on the composition of the family, housing and infrastructure, volume of consumption in the family including domestically manufactured items, economic activity in both agricultural and non-agricultural sectors.

3.2.1. Incomes

In 2004 cash incomes and salary (including individual labor activity) of the population in nominal terms increased by 25.6% and on average constituted 33.75 somoni in a month per capita. In the first quarter of 2005, cash incomes and salary increased by 28.1%, 36.63 somoni in a month per capita. In real terms (deflated by the CPI) cash incomes increased by 17.6% in 2004, and by 21.9% in the first quarter of 2005 (See Table 9).

Table 9: Trends in population incomes and expenditures

	2003	2004	1 st quarter of 2004	1 st quarter of 2005
Average per capita incomes (somon / month)	26,88	33,75	28,59	36,63
Growth in real incomes (%)	117,7	17,6	113,7	121,9
Average monthly salary	44,61	61,81	54,10	80,23
Growth in real salary (%)	117,0	129,7	132,1	140,3
Average per capita expenditures (somon / month)	26,17	32,93	28,44	36,52
Growth in real expenditures (%)	115,0	17,8	113,5	122,2

Source: Household Budget Survey and current statistical data

The most important sources of cash incomes of households continue to remain labor incomes - 57% and receipts from sales of agricultural products - 17.4%. In the first quarter of 2005, the gap between the average incomes of the highest and the lowest income deciles amounted to 11.6 times.

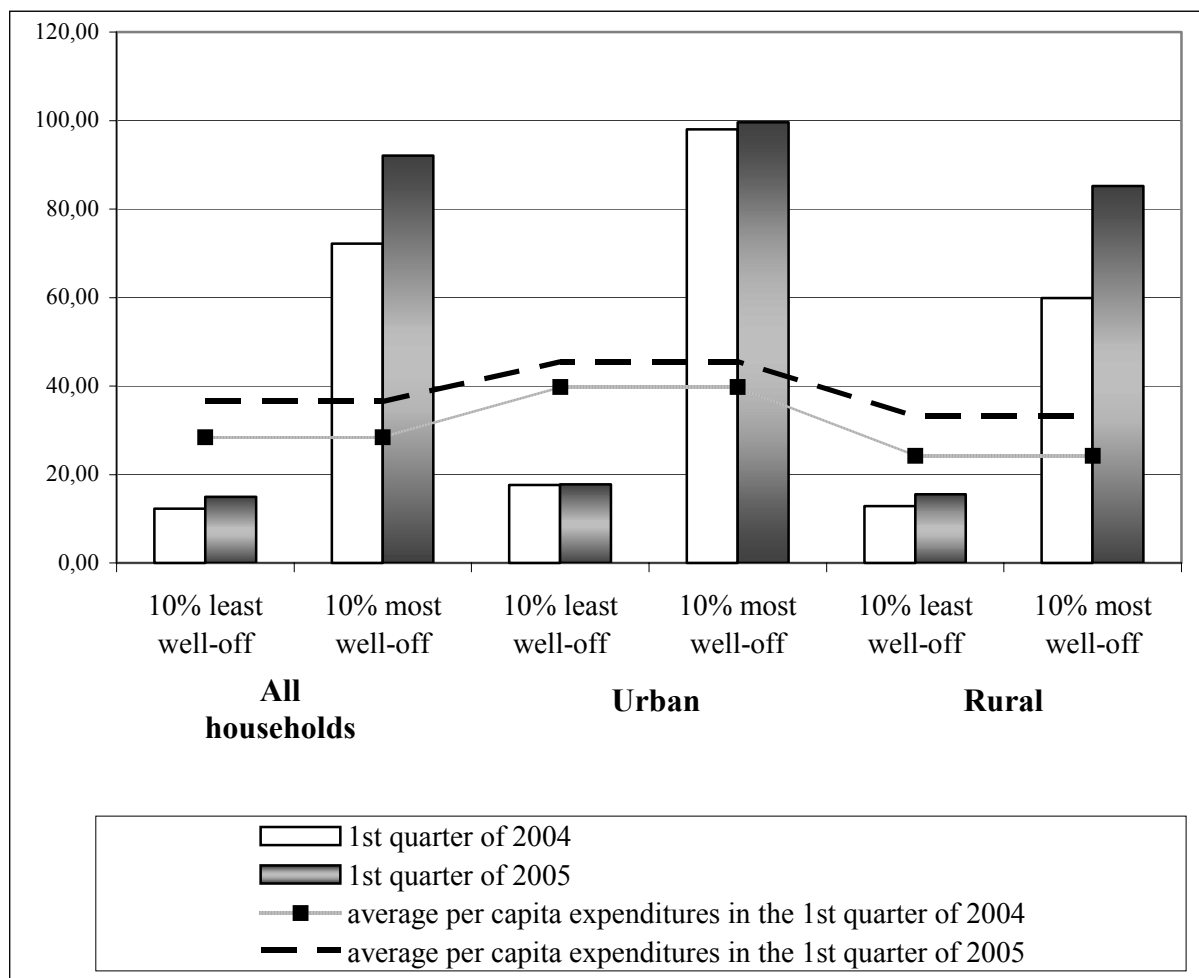
As of the end of June 2005, total arrears in salary payments for the republic made up 27.9 mln.somoni.

3.2.2. Expenditures

In 2004, the average expenditures of the population also rose in nominal and real terms due to higher real incomes and stabilization of prices on consumer goods and services. In the first quarter of 2005, average expenditures of population have risen mainly due to increase in prices (see Appendix 10 and Graph 9).

In contrast to the previous year, the gap between expenditures of the highest and the lowest deciles decreased from 6.1 times in 2003 to 5.5 times in 2004. However in the first quarter of 2005, the gap increased up to 6.2 times against 5.9 times in the first quarter of 2004.

Graph 9: Growth of average per capita expenditures, by decile groups of the population in the first quarters of 2004 and 2005



3.3. Social protection and the vulnerable groups of population.

3.3.1 Social protection in the Republic of Tajikistan

At present time state social protection is carried out through provision of state benefits (benefits to poor families and social allowances), subsidies to different categories of residents.

According to the data of Fund on Social Protection of Population of the Republic of Tajikistan, the amount of actually paid lump-sum birth benefits increased by 1.7 times in the first quarter of 2005, and amount of child benefits increased by 1.6 times.

In 2005 compensations to low-income families with children studying in secondary schools covered 25% of all pupils.

Table 10: Payment of social benefits

	2004	1 st quarter of 2004	1 st quarter of 2005
Lump-sum birth benefit	320,2	72,0	123,0
Child benefit (for children below 1.5 years old)	845,3	196,5	311,6
compensations to low-income families with children studying in secondary schools*	7766,7	1940,9	2409,7

*) According to data of Ministry of Labour and Social Protection of Population. In 2005, 25% of children studying in schools were provided with compensations in accordance with the Decree of the President of the Republic of Tajikistan No.1403 of 4 November 2004

3.4. Food insecurity: households spending more than 70% of expenditures on food

Food insecurity means a situation when people have no regular physical, economic or social access to adequate quantities of qualitative and safe food required for their nutrition and meets their preferences for an active and healthy life.

The results of the Household Budget Survey (Table 9) show that the share of expenditures on food in the structure of total expenditures decreased by 2.4% as compared to the first quarter of 2004, and accounted for less than 70%. The share of expenditures on food in urban area decreased by 3.1%, and in rural area - by 1.9%. At the same time, pensioners spend 75.4% of total consumer expenditures for food (Table 11).

Table 11: Share of consumer expenditures for food in total structure of household expenditures

	2003	2004	1 st quarter of 2004	1 st quarter of 2005
Republic of Tajikistan	66,1	64,5	68,2	65,8
Urban	70,1	68,6	70,9	67,8
Rural	63,5	62,1	66,5	64,6
Oblasts				
Dushanbe	83,7	84,2	82,0	86,2
GBAO				
Sogd oblast	60,3	57,2	60,1	55,9
Khatlon oblast	70,7	66,8	72,1	67,3
RRS	63,2	66,8	70,1	72,1
Vulnerable groups of population				
Households having 3 and more children	65,7	54,5	x	x
Pensioners	77,3	79,2	80,2	75,4

More detailed information on expenditures, incomes and deciles is available in Appendix 6.

CHAPTER IV. USE AND UTILIZATION

Use of food refers to the selection, composition, preparation and allocation of food within the family. Utilization of good refers to the ability of the human body to take and use food within the body. Food use covers knowledge of appropriate diets, and proper allocation of food. The ability of the body to utilize food is affected by its state of health and access to clean drinking water, access to basic health services, etc. The ultimate measure of food security is the nutritional status of the population.

4.1. Consumption of food products by the population

One of the measurements of food and nutritional insecurity is the calculation of daily calorie intake per one household member. The average daily calorie intake reached 2071.62 Kcal per capita in 2004, and 2023 Kcal per capita in the first quarter of 2005 and was slightly lower recommendations of the World Health Organization (WHO) (2100 Kcal per day).

In all regions of Tajikistan consumption of bread and bread products exceeds approved medical norm by 16% and amounted on average to 38 kg in the first quarter of 2005 per one household member.

In the first quarter of 2005, in Tajikistan the consumption of potatoes amounted to 8.4 kg per capita, vegetables and melons – 15.3 kg, milk and dairy products – 11.1 kg, meat and meat products – 1.8 kg, vegetable oil – 3.0 kg, eggs - 6 pieces, sugar and confectionery – 2.4 kg, fruits and grapes – 4.8 kg.

In total structure of household's expenditures for food, bread and bread products occupies the first place (26.9%).

Appendix 9 shows the detailed information on per capita food consumption in the households of the Republic of Tajikistan.

Table 12: Nutritional values of foods consumed per a day (excluding beer and wine)

	<i>Per one household member per a day</i>	<i>of which:</i>		<i>Per one household member per a day</i>	<i>of which:</i>	
		<i>urban area</i>	<i>rural area</i>		<i>urban area</i>	<i>rural area</i>
	<i>1st quarter of 2004</i>			<i>1st quarter of 2005</i>		
Proteins, gr.	46,34	38,45	49,37	46,37	37,71	49,57
of which animal, gr.	5,23	4,51	5,51	5,82	4,50	6,30
Fats, gr.	40,43	42,13	39,83	43,66	43,56	43,69
of which animal, gr.	6,24	6,73	6,07	6,62	6,43	6,69
Carbohydrate, gr.	354,38	298,90	375,68	353,97	292,66	376,58
Caloric value of consumed food, k/calories	1993,26	1807,33	2065,60	2023,39	1786,70	2110,58
of which animal, gr.	94,12	85,95	97,28	99,64	83,97	105,44

Source: household budget surveys

4.2. Food security indicators not related to income

Food utilization also depends on the health status of the population as well as on the knowledge of hygiene and appropriate diets, on access to basic health services and utilities such as clean drinking water and sanitation.

4.2.1 Population morbidity

The greatest number of cases of infectious diseases falls on spring and summer periods when population consumes more water and fresh vegetables and fruits. In this period, incidence of tuberculosis and brucellosis, caused by infected animal food is increasing.

According to the data of the Center for disease control and prevention, in 2004 sanitary inspections in term of observance of anti-brucellosis measures were conducted in 419 livestock holdings. In total 303 entities were tested, of them in 48 cases anti-brucellosis measures were not observed. Preventive medical tests of workers showed that out of 680 examined persons, 1 person had brucellosis clinical implications. Twenty one enterprises (out of 35 enterprises subject to supervision) involved in processing of livestock raw commodities and products were inspected; of them anti-brucellosis measures were not observed in 4 entities.

Increase in tuberculosis and brucellosis cases was registered in the first quarter of 2005 as compared to the corresponding period of 2004 by 20.8% and 21.9%, respectively. Increase in tuberculosis and brucellosis cases among children of 0-14 years old amounted to 15.1 and 58.8%, respectively. In the second quarter of 2005 as compared to the corresponding period of the previous year, incidence of tuberculosis and brucellosis increased by 41.2% and 25.6%, respectively; among children of 0-14 years old the increase reached 63% and 21.4%, respectively (See Tables 13 and 14).

In the first quarter of 2005, share of acute enteric infections in total number of infection diseases accounted for 40.1%, for children of 0-14 years old this share accounted for 44.7%. In the second quarter of 2005, share of acute enteric infections in total number of infection diseases was 70%, for children of 0-14 years old, this indicator reached 86.5%.

In the first quarter of 2005 as compared to the similar period of the previous year, incidence of infection diseases decreased by 10%, of which bacterial dysentery - by 13.5%, typhoid fever - by 12.8%; in the second quarter of 2005 the decrease was 16%, 9%, and 45%, respectively. Incidence of infection diseases among children of 0-14 years old decreased by 16%, of which bacterial dysentery - by 21%; and in the second quarter of 2005 the decrease was 9.7% and 19.7%, respectively

Use of high-quality portable water has a significant importance for prevention of infection diseases.

Table 13. Population morbidity caused by some specific infection diseases*(cases)*

	2003	2004	2004		2005.	
			<i>1 quarter</i>	<i>2 quarter</i>	<i>1 quarter</i>	<i>2 quarter</i>
Total number of registered cases	95819	99296	9928	24191	10238	20973
of which:						
Acute enteric infections	66698	70521	4570	17483	4110	14710
of which:						
Bacterial dysentery (shigellosis)	1830	1557	222	410	192	373
Typhoid fever	3148	2481	367	499	320	277
Tuberculosis, new cases	3074	3324	539	976	651	1378
Brucellosis	1471	1309	169	630	206	791

Таблица 14: Заболеваемость детей 0-14 лет инфекционными болезнями*(случаев)*

	2003	2004	2004		2005	
			<i>1 quarter</i>	<i>2 quarter</i>	<i>1 quarter</i>	<i>2 quarter</i>
Total number of registered cases	68150	75255	6694	17253	6735	15028
of which:						
Acute enteric infections	53805	58797	3585	14083	3012	12719
of which:						
Bacterial dysentery (shigellosis)	862	700	80	183	63	147
Typhoid fever	1164	966	142	172	156	112
Tuberculosis, new cases	288	241	33	73	38	119
Brucellosis	219	187	17	103	27	125

4.2.2 Nutritional status of the population

Nutritional status, nutritious microelement deficiency and malnutrition are the main indicators of food and nutritional security. High quality and variety of foods, consumption of fruits and vegetables by children are the powerful factors that are able to prevent spread of infectious and other diseases.

Republican Nutrition Center under the Ministry of Health Care of the Republic of Tajikistan under its research activity “Monitoring of nutritional status and prevalence of dietetic diseases among pupils of Tajikistan” conducted an assessment of nutritional status and prevalence of iron deficiency among pupils (15 years old) in Dushanbe and RRS.

As a result, the following typical nutritional disorders, having significant health influence were discovered:

- low share of fats, and high share of carbohydrate in a diet (nutritional values of food consumed by the children is the following: proteins - 10.95%, fats - 17.35%, carbohydrate - 71.7%)

- consumption of total protein by pupils is about the norms recommended by WHO, however it's well below the norms recommended by MOH of USSR (1991)

- poor vitamins A, B2, iron and calcium, etc. intake is caused by lower consumption of animal origin products

- incidence of iron deficiency among pupils aged 15 was 46% for girls and 42% for boys

- consumption of meat, eggs, sugar, etc. by pupils decreased against the level of consumption of 1987

- a diet of surveyed pupils is characterized by extraordinary sameness and poor variety of products

Iodized salt research ¹

13364 samples of iodized salt were tested by institutions for disease control in 2004, of them 2089 samples did not meet the health standards. 829 samples were tested in the enterprises produced iodized salt - of them 243 samples didn't meet the health standards. 5593 samples of iodized salt were taken from trade points - of them 652 samples didn't satisfy the health standards. 3625 samples were tested in preschool institutions, schools and medical institutions - of them 333 samples didn't meet the health standards.

Health criteria of food products ¹

In 2004, 14491 samples of food products were tested with regard to sanitary and hygienic standards, of them 1105 samples did not meet biomedical and hygien requirements. Of them 1519 samples were tested with regard to pesticide content, of them 18 samples didn't satisfy health standards.

Таблица 15: Number of samples covered by chemical test

Food products	Number of samples covered by chemical test			
	Total number	Of them, do not meet health standards	Of them samples tested with regard to pesticide content	
			Total number	Of them, do not meet health standards
Total number	14491	1105	1519	18
of which:				
Meat and meat products	1276	70	29	-
Milk, dairy products including dairy butter	1912	122	56	-
Bread products and flour-and-cereals products	2434	181	150	-
Sugar and confectionery	740	60	98	-
Fats vegetable origin products	1718	126	63	-
Beer and soft drinks	1005	166	90	-
Alcoholic beverages	1267	90	8	2
Vegetables and melons	1648	235	503	10
Grain and cereal products	248	10	66	3
Others	931	20	190	3

¹⁾ According to the data of State center for disease control and prevention

METHODOLOGY

1. Methodology of food security analysis

“Food and nutrition security is achieved if adequate food (quantity, safety, quality, social-cultural acceptance) is available and accessible for and satisfactory used and utilized by all individuals at all time to live a healthy and active life”.

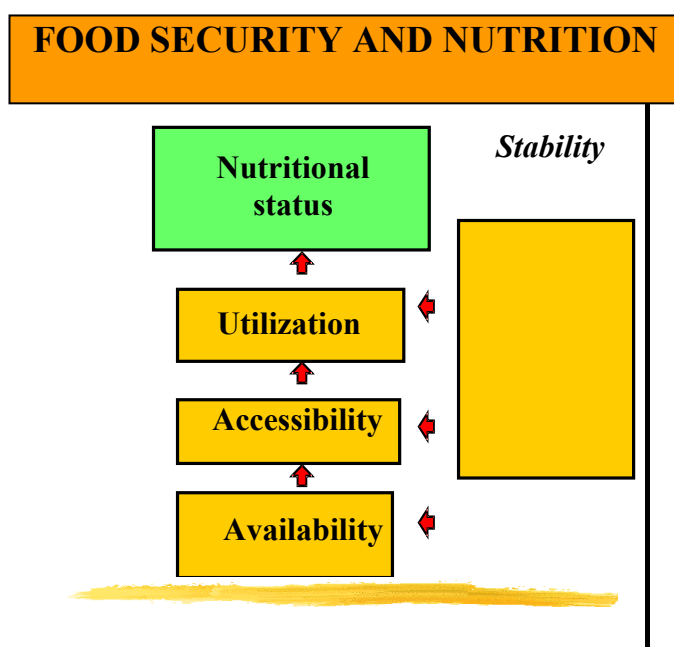
Availability physical existence of quantitatively and qualitatively adequate and safe food items.

Access: all households and household members have sufficient resources to obtain appropriate food (*through* production, purchase or donation)

Use and utilization: adequate knowledge, health and sanitation to enable the human body to digest and utilize that food

Stability: continuous ensuring of availability of, access to and appropriate use and utilization of food. If not, individuals will suffer from chronic or transitory food insecurity

For case of reference the four pillars of food and nutrition security are pictured below:



All four dimensions need to be fulfilled if there is to be food and nutrition security. As individuals and households live in a society, the 4 dimensions of FNS need to co-exist at all levels, from the individual and household level (**micro level**), to the community (vil-

lage, rayon, oblast) level, representing the **meso level**, and the nation and global level (**macro level**).

To monitor food security it is necessary to select relevant indicators and to measure these indicators at regular intervals.

2. Food balance methodology

Food balances for basic foodstuffs are compiled in natural terms.

In the course of the compilation of the food balance, the closing stocks as of December 31 in one year become the opening stocks on January 1 in the following year. With regard to imports and exports of products, the official data was used, in respect of production preliminary data.

Seed use is calculated on areas sown with agricultural crops as well as actual amount of seeds used for 1 ha. The calculation of lost was made according to the official norms.

In order to determine the number of eggs for the incubation the actual number of poultry offspring as well as norms on the number of chicken from the eggs laid for incubation.

The calculation of the volume of food products consumed by population as well as expenses on animal feeding was based on the data obtained during the survey of 925 households. The calculation of meat consumption also included the meat consumed in the course of observing national traditions (funeral, weddings, religious feasts, etc.)

Glossary

The *unemployed* - people of 16 and more who during period under review had no job (profitable occupation); were in search for a job i.e. applied to public employment offices or used alternative ways of job finding as well as were ready to start working.

Gross Domestic Product (GDP) - a general indicator of economic activity which is calculated in basic and market prices (nominal GDP) and in comparable prices (real GDP).

Consumer price index on goods and paid services to the population (CPI) - characterizes the change in the general price level for goods and services over time. The index measures the correlation of the value of actually set of goods and services during the given period to the value thereof during the basic period.

Average nominal monthly salary is calculated by dividing actually accrued salary fund to the staff and part-time employees by the number used for the calculation of average salary and number of months in a year during corresponding period.

Average daily per capita calorie intake measure the calories in the consumed food products per one household member as well as chemical composition in protein and fats.

Official unemployment rate - the ratio of people officially registered as unemployed to the number of economically active population, expressed in per cent.

List of abbreviations

GDP	Gross Domestic Product
GBAO	Gorno-Badakhshan Autonomous Oblast
CPI	Consumer price index on goods and paid services to the population
RRS	Regions of republican subordination

Appendix 1

Review of hydro meteorological conditions on the territory of the Republic of Tajikistan during the second quarter of 2005

Meteorological conditions

In **April** 2005, the average monthly air temperature throughout the republic was within the normal, and only in Gorno-Badakhshan Autonomous Oblast it was below the normal by 1-5 degrees: 13-18 degrees in valleys, 4-10 degrees in mountainous regions, 0-5 degrees below zero in high mountain areas, and about 11 degrees in Bulunkul region.

The coldest weather was registered on 5-11 April. The day-time temperature these days decreased to 8-13 degrees, night-time temperature decreased to 0-5 degrees, and mean daily temperature was below the normal by 5-10 degrees.

The fall-outs of various intensity were registered mainly during the first part of the months.

Amount of precipitations in Khatlon and Sogd Oblasts, as well as in the regions of the republican subordination was below the long-term average (30-80% of the norm), in GBAO it was above the norm (150-250%). The stronger winds (up to 20-25 m/sec) were registered during fall-outs in Bulunkul, Rushan, and Djirgital regions.

During **May** the average monthly air temperature was below the normal by 1-2 degrees: 18-21 degrees in valleys, 8-13 degrees in mountainous regions, and 1-6 degrees in high mountain areas.

At the beginning of the month the weather was relatively warm. Day-time temperature reached 27-32 degrees, and night-time temperature was about 14-19 degrees. In high agricultural regions, the night-time temperature was 6-11 degrees, and day-time temperature was 19-24 degrees. The mean daily temperature throughout the republic was above the normal by 1-6 degrees

Second and third decades of the month were characterized by lower temperature conditions. Some days during this period, the day-time temperature fell to 18-23 degrees, and the mean daily temperature was below the normal by 3-8 degrees.

The fall-outs of various intensity were observed during 10-15 days in valleys and foothills, and 5-10 days in mountainous and high-mountain regions.

Monthly amount of precipitations in piedmont and mountainous regions was 25-100 mm, while the norm is 30-130 mm (60-100%). And only in valleys the average amount of precipitation exceeded the normal values by 30% and amounted to 50-100 mm, while the norm is 40-80 mm.

Heavy rainfalls accompanied by storms were observed on 8-9 May, and were the most intensive in Gissar valley, where they amounted to 40-52 mm for a night. Snowfalls were registered in mountains of Sogd oblast on 19 May. In some places snowfalls were heavy (29 mm per a day in Darvaz regions). Intensive thunderstorm activity was registered in valleys and foothills (24 days). The stronger winds up to 20-25 m/sec were registered during fall-outs in some regions of the republic.

The first part of **June** was characterized by cool weather. The peak temperature in valleys didn't exceed 22-27 degrees. But the coldest weather was registered on 9-12 June, when the mean daily temperature was below the norm by 4-9 degrees and amounted to 20-25 degrees.

Warm weather was observed during the second part of the month, when the day-time air temperature reached 33-38 degrees. The warmest weather was registered during the period from 20 to 24 June, when air temperature in valleys reached 36-41 degrees, and 41-46 degrees in southern part of the republic. The average daily air temperature during this period was above the long-term average values by 3-5 degrees.

Fall-outs of various intensity were infrequent. Fall-outs were registered during 3-7 days in Khatlon oblast and regions of the republican subordination, 8-10 days in Sogd oblast, and 2-7 days in the western part of GBAO and some regions of the eastern part.

Monthly amount of precipitation was mainly above the normal (60-380%). Distribution of precipitation in GBAO was not uniform: from 4% of the norm in Ishkoshim and Horog regions and to 113-272% of the norm in Shaimak, Irht and Bulunkul regions. Heavy rainfalls were registered on 4, 10, and 14 June: 14-21 mm in Dushanbe, Gissar, Yavan and Isanbay regions, 36 mm in Hovaling, and 14 mm in Djirgatal.

Thunderstorms and strong winds (up to 17-22 m/s) were very frequent in some regions of the republic. At the end of the month, fogs were observed in most regions of the country.

Hydrological conditions

During first decade of **April** floods were observed on Yahsu, Kizilsu rivers and rivers of southern slope of Gissar range. On 5-6 April water discharge on Yahso, Kizilsu, and Varzob rivers exceeded the long-term average values by 1.5-2 times. Second and third decades were characterized by decrease of water content.

Monthly water discharge of the most rivers of the republic was above the norm (96-190%) and exceeded the last year volumes (70-120%).

During the month, the level of Sarez lake decreased by 76 sm and amounted to 1714 sm. Nurek reservoir capacity decreased by 0.202 mln.m³ and amounted to 5997 mln.m³, which is higher than the level of the previous year by 0.011 mln.m³. The capacity of Kairakum reservoir decreased by 0.049 mln.m³ and amounted to 3414 mln.m³, which is less than the level of the previous year by 0.024 mln.m³.

In the first and second decades of **May**, increase of water content in the rivers of the republic was registered. In the third decade of the month due to decrease of air temperature the water content in the rivers was below or within the norm (60-100%). Water content of the rivers was less by 10-40% as compared to the corresponding period of the previous year.

During the month, the level of Sarez lake increased by 115 sm and reached 1829 sm. Nurek reservoir capacity increased by 0.092 mln.m³ and amounted to 6089 mln.m³, which is lower than the level of the previous year by 0.361 mln.m³. The capacity of Kairakum reservoir increased by 0.073 mln.m³ and amounted to 3487 mln.m³, exceeding the level of the previous year by 0.064 mln.m³.

High water content was observed on the rivers of GBAO, Pyandj and Vakhsh regions as well as rivers of southern slope of Gissar range in **June** 2005. Monthly water discharge of the most rivers of the republic was within and above the norm (110-210%). In the second decade of the month the peak water discharge exceeded the maximum long-term average values by 10-80%. As compared to the corresponding period of the previous year, the water content of the rivers of the republic was within or above the norm (90-160%).

During the month, the level of Sarez lake increased by 274 sm and amounted to 2103 sm. Nurek reservoir capacity increased by 2.332 mln.m³ and amounted to 8421 mln.m³, which is higher than the level of the previous year by 0.390 mln.m³. The capacity of Kairakum reservoir decreased by 0.167 mln.m³ and amounted to 3320 mln.m³, which is less than the level of the previous year by 0.054 mln.m³.

Review of snow slides and mudflows

One avalanche with 2 days duration (19-20 April) was forecasted for **April**; the forecast scored 100%: avalanches were observed on the southern slope of Anzob pass in Shodmondar region. Destructions and victims were not registered.

One mudflow with duration of 3 days (6-8 April) was forecasted; the forecast scored 100%. Mudflows were observed on the lower part of Obihingou valley near Tavildara region. Mud floods occurred on some tributary streams of Varzob river. Destructions and victims were not registered

The amount of precipitation in mountains and foothills was the following: 80% of the norm in Dushanbe, 31% in Mayhura, 202% in Horog, and 95% in Yavan.

In **May** 3 avalanche with total duration of 10 days were forecasted; the forecast scored 100%. Avalanches were observed on the southern slope of Anzob pass and in Shodmondar region on 83-88 km of Dushanbe-Hudjand Road. Destructions and victims were not registered.

One mudflow with duration of 3 days (7-9 May) was forecasted; the forecast scored 100%. Mudflows were observed on the lower part of Obihingou valley near Tavildara region. Mud floods occurred on some tributary streams of Varzob river. The mudflows were caused by long-lasting and heavy precipitation. Destructions and victims were not registered.

Avalanche forecast was not provided for **June**. Avalanches were not registered during the month. With a view to uniform snow dissolution and lack of heavy rainfalls, the mudflow forecast was not produced as well. However, the ingress of warm air from south-west was registered on 23 June: air temperature increased up to 41 degrees in Dushanbe, 46 degrees in Isambay that caused intense snow dissolution. As a result, floods were observed in all rivers of the republic, water discharge was 150-250% of the norm. In some places mudflows were registered, since the water contained mass of clay, sand, and stones. These flood flows caused significant economic losses for the republic.

Appendix 2

PRSP Indicators in the Republic of Tajikistan for 2003, 2004, first quarter and first half of 2005

	Indicator	Measure	2003	2004 ¹	1 st quarter of 2005	1 st half of 2005
MACROECONOMIC INDICATORS						
1.	GDP	mln.somoni	4757,8	6157,5	1274,6	2796,3
2.	GDP growth rate	%	110,2	110,6	107,8	108,1
3.	Production of food products (in % to GDP)		...			-
4.	Agricultural output (in % to GDP)	%	41,5	36,7	8,3	18,5
5.	Industrial output (in % to GDP)	%	65,8	63,6	75,1	67,8
6.	Services (in % to GDP)	%	25,6	26,0	35,2	32,8
7.	Income from taxes (in % to GDP)	%	15,0	15,2	21,9	20,6
8.	Revenue of State budget (in % to GDP)	%	17,3	16,7	23,2	21,8
9.	Expenditures of State budget (in % to GDP)	%	16,2	17,6	19,6	21,2
10.	Exports	mln.USD	797,9	914,9	211,3	430,4
11.	Imports	mln.USD	881,3	1375,2	277,4	603,3
12.	Inflation rate in consumers' sector	%	13,7	5,7	1,8	4,1
13.	Share of private sector in GDP	%	35,3	39,8	-	-
14.	State budget revenues from privatization	thsd.somoni	21700,6	35889,2	9052,1	19205,1
POVERTY INDICATORS						
15.	Poverty level	%	64,4 ²	x	x	x
16.	Urban poverty level	%	55,4 ²	x	x	x
17.	Rural poverty level	%	67,7 ²	x	x	x
18.	Share of people living under absolute poverty	%	19,9 ²	x	x	x
19.	Population incomes, according to household surveys, per 1 household member	somoni per a month	35,38	44,32	38,63	...
SOCIAL PROTECTION INDICATORS						
20.	Expenditures of state budget (in % to GDP) for social sector	%	6,1	6,6	9,6	9,9
21.	Registered unemployment rate	%	2,6	2,2	2,1	2,0
22.	Number of registered labour migrants	thsd.persons	2,7	2,3	x	x
23.	Share of labour force in total population	%	29,1	3)	x	x
24.	Share of able-bodied population occupied in private sector	%	23,1	3)	x	x

	Indicator	Measure	2003	2004 ¹	1 st quarter of 2005	1 st half of 2005
25.	Share of invalids in total population	%	1,8	1,8	1,8	x
26.	Share of pensioners in total population	%	8,1	7,7	7,8	x
GENDER STATISTICS						
27.	Share of women in total labour force	%	-	-	x	x
28.	Share of women in total number of employees	%	47,2	52,4	x	x
29.	Share of women in executive authorities	%	27,1	24,9	x	x
30.	Share of women in representative agencies of State power	%	32,5	35,4	x	x
31.	Share of women in juridical departments	%	36,3	36,3	x	x
AGRICULTURE						
32.	Expenditures of State budget (in % to GDP)	%	0,5	0,5	0,6	0,7
33.	Number of employed in agricultural sector (excluding persons occupied in (dehkan) farms and private plot)	thsd.persons	548,9	546,4	521,8	539,8
34.	Agricultural productivity		x	x	x	x
35.	Wages and salaries in agricultural sector	somoni	27,00	34,96	35,94	35,90
36.	Access of farmers to credits	
37.	Access of farmers to new technologies	
38.	Wage arrears in agricultural sector	thsd.somoni	15532,3	15621,2	16253,5	15578,8
39.	Total number of farms	number	16433	17097	19416	19416
	of which in:					
	GBAO	number	51	53	49	49
	Sogd Oblast	number	2726	1800	2957	2957
	Khatlon Oblast	number	5478	6032	7528	7528
	RRS	number	8178	8882	8882	8882
40.	% of individual land utilization	%	1,5
IRRIGATION STATISTICS						
41.	Expenditures of State budget (in % to GDP)	%	0,2	0,1	0,13	0,18
42.	Total irrigated land	ha	722223	735411	703809	703809
	of which:					
	Arable land	ha	502795	503916	499997	499997
	Perennial plantations	ha	78996	79517	77076	77076
	Fallow lands	ha	13640	16571	15940	15940
	Hay-fields	ha	852	849	672	672
	Pastures	ha	3230	3247	2516	2516

	Indicator	Measure	2003	2004 ¹	1 st quarter of 2005	1 st half of 2005
	Infields	ha	80149	86108	71928	71928
	Private household plots	ha	36895	36499	32212	32212
	Forests	ha	5666	5704	3468	3468
43.	Irrigated lands per capita	ha	0,11	0,12	0,11	0,11
44.	Share of arable land vulnerable to erosion	%
45.	Share of developed lands	%	0,4	1,0	x	x
46.	Share of lands vulnerable to salinization and swamping	%	4,2	1,9	x	x
HEALTH CARE						
47.	Expenditures of State budget (in % to GDP)	%	0,9	0,9	1,3	1,3
48.	Share of population suffering from malnutrition	per 100 000 population	136,5 ⁴	132	x	x
49.	Maternal mortality ⁵	per 100 000 births	37,7	39,0	x	x
50.	Infant mortality	
	- according to MICS 2000	per 1000 births	89,0	x	x	x
51.	Registered childhood mortality	
52.	Rate of contraceptive use among women of fertile age (%)	%	15,3	14,8	x	
53.	Share of 1-year children vaccinated against measles	%	97,7	97,5 ³⁾	x	
54.	Coverage of vaccination, %	%	97,0-in 2002			
55.	Mortality caused by malaria and typhoid in 1999, per 100 000 population	number	0/4,9	x	x	x
56.	Number of cases of AIDS / HIV ⁵	cases	119/1	317/1	x	x
57.	Number of cases of tuberculosis	cases	3972	3287	651	2029
58.	Number of cases of typhoid fever	cases	3148	2547	320	597
59.	Infection diseases	per 100 000 population	1457,7	1341,1	150,4	465,1
	Acute intestinal infections		1014,7	908,5	60,8	281,0
	Typhoid fever		47,9	38,0	4,7	8,9
	Diphtheria		0,20	0,04	0,01	0,04
	Whooping cough		0,32	1,1	0,03	0,06
	Measles		33,0	0,3	-	-
	Malaria discovered for a first time		71,6	44,6	0,3	7,2
	Scab		55,0	52,4	15,2	28,9
	Pediculosis		18,2	20,1	1,9	6,0
	Influenza virus infection		752,0	1497,7	303,2	347,7
	Acute respiratory infections		5503,9	4813,2	1781,2	2776,5
	Viral hepatitis (including serum hepatitis)		88,1	159,5	26,1	51,0
	Varicella		15,0	19,8	3,4	5,8
	Mumps		28,2	6,3	1,4	3,2

	Indicator	Measure	2003	2004 ¹	1 st quarter of 2005	1 st half of 2005
	Meningococcal infection		1,2	1,0	0,2	0,5
	AIDS		0,01	0,01	-	-
	Human immunodeficiency virus		1,8	4,7	-	-
60.	Share of population consuming adequately iodized salt (%), according to MICS-2 conducted in 2000		20,2	x	x	x
EDUCATION						
61.	Expenditures of State budget (in % to GDP)	%	2,41	2,7	3,8	4,1
62.	Literacy rate among adult population, according to population census 2000	%	95,5	x	x	x
63.	Population with higher education	per 10 000 population	20,4	21,2	x	x
64.	Population with specialized secondary education	per 10 000 population	8,4	11,3	x	x
65.	Share of literate population among population at the age of 15-24, according to population census 2000	%	99,8	x	x	x
66.	Proportion of pupils starting grade 1 who reach grade 5	%	102,7	89,6	x	x
67.	Number of pupils per 1 trained teacher		schools -16 IHE-16,5 SSEE-11,1	17 16,2 11,0	x	x
68.	Number of schoolbooks per 1 pupil	numbers per 1 pupil	6,8	8,1	x	x
69.	Proportion of girls and boys while enrollment to schools	%	girls-48 boys-52	48 52	x	x
70.	% of females, by type of education	%	IHE 24,8 SSEE-53,3 TVS-28,4 PE -31,3	26 56 26,8 29,8	x	x
ENVIRONMENT						
71.	Expenditures of State budget (in % to GDP)	%	0,04	0,05	0,02	0,04
72.	Proportion of irrigated and marshy lands	%	4,2	x	x	x
73.	Consumption of ozone depleters	metric ton	38,85	64,26	x	x
74.	Percentage of forest land (in % to total lands)	%	3	3	x	x
INFRASTRUCTURE DEVELOPMENT						
75.	Expenditures of State budget (in % to GDP)	%	1,2	1,3	0,9	1,3
76.	Share of regions where more than 50% of roads are in bad conditions		80	x	x	x

	Indicator	Measure	2003	2004 ¹	1 st quarter of 2005	1 st half of 2005
77.	Share of population with access to television and radio broadcasting	%	tel - 89,7 radio - 63,2	93,7	x	x
78.	Number of telephones per 100 resident population	number	4	4	4	4
79.	Number of mobile phones per 100 resident population	number	0,73	2,5	2,4	3,1
80.	Internet per 1000 resident population		0,2	0,3	0,3	0,4
81.	Population expenditures for communal services and electric power, per 1 household member	somoni per month	0,71	0,98	1,22	...
82.	Population receiving compensation for: – gas	persons / number of families	117547/-	338778 25473	256252 37171	235063 39429
	- electric power	number of families	413425	543309	527348	514226
83.	Number of foreign tourists	persons	887	401	x	144

1) preliminary data

2) Source: World Bank

3) according to annual reports

4) estimates - malnutrition (Ministry of Health Care of the Republic of Tajikistan)

5) according to data of the Ministry of Health Care of the Republic of Tajikistan

IHE - institutions of higher educations

SSEE - specialised secondary educational establishment

TVS - technical vocational school

PE - postgraduate education

APPENDIX 3. CHANGES IN AVERAGE WHOLESALE PRICES (SUPPLY) IN TAJIKISTAN

(somon / kg)

	2003	2004	2003		2004		2005	
			I quarter	II quarter	I quarter	II quarter	I quarter	II quarter
Potatoes								
GBAO	0,21	0,29	-	-	-	0,27	-	0,30
Sogd Oblast	0,20	0,12	0,19	0,20	0,16	0,09	0,12	0,13
Khatlon Oblast	0,30	0,17	0,58	0,28	0,21	0,14	0,43	0,30
RRS	0,27	0,20	0,73	0,70	0,50	0,19	0,30	0,29
Average in the Republic	0,25	0,17	0,21	0,21	0,18	0,12	0,13	0,19
Milk								
GBAO	0,62	0,44	0,58	0,26	0,50	0,46	-	0,50
Sogd Oblast	0,23	0,27	0,23	0,22	0,30	0,28	0,39	0,38
Khatlon Oblast	0,19	0,18	0,20	0,24	0,19	0,20	0,17	0,19
RRS	0,35	0,44	0,36	0,35	0,44	0,44	0,61	0,57
Average in the Republic	0,25	0,29	0,26	0,26	0,32	0,31	0,42	0,41
Wheat								
GBAO	0,70	0,55	0,39	0,24	0,45	0,45	-	-
Sogd Oblast	0,20	0,27	0,20	0,25	0,25	0,19	0,39	0,38
Khatlon Oblast	0,28	0,28	0,34	0,23	0,46	0,33	0,62	0,29
RRS	0,35	0,38	0,28	0,29	0,35	0,33	0,54	0,46
Average in the Republic	0,28	0,29	0,31	0,24	0,33	0,25	0,42	0,34

APPENDIX 4. CHANGES IN AVERAGE CONSUMER PRICES IN TAJIKISTAN (somon / kg)

	2004	I quarter		II quarter	
		2004	2005	2004	2005
		Potatoes			
Dushanbe	0,46	0,55	0,62	0,38	0,85
Sogd Oblast	0,28	0,32	0,32	0,24	0,58
Khatlon Oblast	0,43	0,58	0,62	0,34	0,72
Average in the Republic	0,39	0,48	0,52	0,32	0,71
		Milk			
Dushanbe	1,16	1,15	1,37	1,15	1,40
Sogd Oblast	0,48	0,45	0,60	0,47	0,57
Khatlon Oblast	0,53	0,50	0,52	0,50	0,48
Average in the Republic	0,72	0,70	0,83	0,71	0,82
		Flour of 1st grade			
Dushanbe	1,04	1,04	1,05	1,04	1,05
Sogd Oblast	0,91	0,90	0,95	0,90	0,94
Khatlon Oblast	1,06	1,09	1,05	1,05	1,05
Average in the Republic	1,00	1,01	1,02	1,00	1,01
		Wheat			
Dushanbe	0,64	0,60	0,65	0,65	0,75
Sogd Oblast	0,52	0,47	0,59	0,53	0,59
Khatlon Oblast	0,58	0,53	0,70	0,52	0,70
Average in the Republic	0,58	0,53	0,65	0,57	0,68
		Rice			
Dushanbe	1,55	1,39	1,67	1,50	2,03
Sogd Oblast	1,32	1,26	1,44	1,28	1,72
Khatlon Oblast	1,32	1,25	1,44	1,27	1,80
Average in the Republic	1,39	1,30	1,52	1,35	1,85
		Sugar			
Dushanbe	1,54	1,44	1,53	1,42	1,67
Sogd Oblast	1,57	1,41	1,54	1,50	1,69
Khatlon Oblast	1,60	1,47	1,53	1,47	1,67
Average in the Republic	1,57	1,44	1,54	1,46	1,68

	2004	I quarter		II quarter	
		2004	2005	2004	2005
Onions					
Dushanbe	0,44	0,58	0,64	0,40	0,52
Sogd Oblast	0,28	0,28	0,34	0,33	0,42
Khatlon Oblast	0,42	0,56	0,65	0,38	0,52
Average in the Republic	0,38	0,47	0,54	0,37	0,49
Cotton oil					
Dushanbe	2,78	2,75	2,82	2,75	2,80
Sogd Oblast	2,88	2,79	2,82	2,88	2,73
Khatlon Oblast	2,55	2,52	2,60	2,49	2,65
Average in the Republic	2,74	2,69	2,74	2,71	2,69
Mutton					
Dushanbe	8,35	8,30	8,25	8,50	8,25
Sogd Oblast	8,41	8,43	8,43	8,40	8,19
Khatlon Oblast	7,65	7,49	7,67	7,70	7,37
Average in the Republic	8,13	8,07	8,12	8,20	7,93
Beef					
Dushanbe	7,00	7,00	7,00	7,00	7,27
Sogd Oblast	6,38	6,43	6,47	6,30	6,21
Khatlon Oblast	6,42	6,44	6,40	6,46	6,30
Average in the Republic	6,60	6,62	6,62	6,59	6,59
Chicken meet					
Dushanbe	6,24	6,22	6,22	6,22	6,22
Sogd Oblast	5,13	5,50	5,64	4,60	5,53
Khatlon Oblast	6,39	6,37	6,33	6,37	6,33
Average in the Republic	5,92	6,03	6,06	5,73	6,03
Eggs (10 pieces)					
Dushanbe	2,83	2,53	3,03	2,50	2,93
Sogd Oblast	2,41	2,23	2,82	2,00	2,23
Khatlon Oblast	2,74	2,66	3,00	2,50	3,00
Average in the Republic	2,66	2,47	2,95	2,33	2,72

APPENDIX 5. FOOD BALANCE OF THE REPUBLIC OF TAJIKISTAN

	Basic foodstuffs (physical quantities)	Bread and bread products in grain, thousand tons				Potatoes fresh, thousand tons				Vegetables and melons fresh, thousand tons				Fruits and berries fresh, thousand tons				Sugar and confectionery, in sugar, thousand tons			
		I q. 2004	II q. 2004	III q. 2004	IV q. 2004	I q. 2004	II q. 2004	III q. 2004	IV q. 2004	I q. 2004	II q. 2004	III q. 2004	IV q. 2004	I q. 2004	II q. 2004	III q. 2004	IV q. 2004	I q. 2004	II q. 2004	III q. 2004	IV q. 2004
1.	Stocks at the beginning of the period	215,7	17,3	39,1	290,1	234,9	154,4	29,5	100,2	95,0	1,0	3,0	11,0	13,0	0,1	-	26,0	47,4	47,1	42,8	28,7
2.	Food production in the country (+)	-	121,0	483,0	75,0	-	68,8	196,4	262,0	0,4	85,0	444,9	299,5	-	12,9	98,2	126,5	-	-	-	1,6
3.	Food imports (+)	86,6	126,8	20,5	42,9	-	-	0,6	-	0,1	2,2	-	0,1	2,7	1,0	0,8	0,3	13,6	8,4	49,8	37,3
	Availability (1-3) (+)	302,3	265,1	542,6	408,0	234,9	223,2	226,5	362,2	95,5	88,2	447,9	310,6	15,7	14,0	99,0	152,8	61,0	55,5	92,6	67,6
4.	Used for seed (-)	60,0	-	10,0	37,2	31,2	81,0	50,0	-	-	-	-	-	-	-	-	-	-	-	-	-
5.	Used as fodder (-)	-	-	-	-	-	-	-	-	-	-	-	-	-	-	-	-	-	-	-	-
6.	Losses (-)	-	-	12,1	-	-	-	9,0	21,0	-	8,0	9,0	83,0	-	0,6	0,9	7,6	-	-	-	-
7.	Food exports (-)	-	-	-	-	-	-	0,1	0,2	0,5	17,7	26,4	46,0	5,3	5,7	11,3	35,6	-	-	-	-
8.	Availability for consumption by the population (-)	225	226,0	230,0	246,0	49,3	112,7	67,2	75,3	94,0	59,5	401,5	160,0	10,3	7,7	60,8	93,6	13,9	12,7	36,0	47,0
9.	Other utilization (-)	-	-	0,4	3,0	-	-	-	1,0	-	-	-	-	-	-	-	12,7	-	-	27,9	-
	Consumption (4-9) (-)	285	226,0	252,5	286,2	80,5	112,7	126,3	97,5	94,5	85,2	436,9	289,0	15,6	7,7	73,0	149,5	13,9	12,7	63,9	47,0
10.	Stocks at the end of the period	17,3	39,1	290,1	121,8	154,4	29,5	100,2	264,7	1,0	3,0	11,0	21,6	0,1	-	26,0	3,3	47,1	42,8	28,7	20,6

	Basic foodstuffs (physical quantities)	Meat and meat products in carcass weight, thousand tons				Milk and dairy products, in milk, thousand tons				Eggs, million				Vegetable oil, thousand tons				Fish and fish products, tons			
		I q. 2004	II q. 2004	III q. 2004	IV q. 2004	I q. 2004	II q. 2004	III q. 2004	IV q. 2004	I q. 2004	II q. 2004	III q. 2004	IV q. 2004	I q. 2004	II q. 2004	III q. 2004	IV q. 2004	I q. 2004	II q. 2004	III q. 2004	IV q. 2004
1.	Stocks at the beginning of the period	8,7	0,5	0,2	0,1	0,6	-	-	-	3,3	0,2	0,7	0,6	0,9	0,2	2,3	3,4	11,0	7,0	1,0	1,7
2.	Food production in the country (+)	7,5	13,6	13,5	13,6	93,7	127,6	120,6	147,6	16,0	20,0	21,3	20,4	6,8	10,6	3,5	7,3	19,1	53,3	74,3	-
3.	Food imports (+)	0,3	0,1	-	5,8	0,3	0,2	0,2	0,9	1,1	-	28,0	18,9	2,5	2,1	2,1	29,4	12	0,4	64,4	96,2
	Availability (1-3) (+)	16,5	14,2	13,7	19,5	94,6	127,8	120,8	148,5	20,4	23,6	50,0	39,9	10,2	12,9	7,9	40,1	42,1	60,7	140,4	97,9
4.	Used for seed (-)	-	-	-	-	-	-	-	-	-	-	-	-	-	-	-	-	-	-	-	-
5.	Used as fodder (-)	-	-	-	-	-	-	-	-	-	-	-	-	-	-	-	-	-	-	-	-
6.	Losses (-)	-	-	-	-	-	-	-	-	-	-	-	-	-	-	-	-	-	-	-	-
7.	Food exports (-)	-	-	-	-	-	-	0,1	-	-	-	-	-	-	-	-	-	-	-	-	-
8.	Availability for consumption by the population (-)	16,0	14,0	13,6	18,9	94,6	127,8	118,7	147,9	20,2	22,9	48,6	38,9	10,0	10,6	4,5	35,1	35,1	59,0	138,7	91,2
9.	Other utilization (-)	-	-	-	-	-	-	2,0	-	-	-	0,8	-	-	-	-	-	-	-	-	-
	Consumption (4-9) (-)	16,0	14,0	13,6	18,9	94,6	127,8	120,8	147,9	20,2	22,9	49,4	38,9	10,0	10,6	4,5	35,1	35,1	59,0	138,7	91,2
10.	Stocks at the end of the period	0,5	0,2	0,1	0,6	-	-	-	0,6	0,2	0,7	0,6	1,0	0,2	2,3	3,4	5,0	7,0	1,7	1,7	6,7

APPENDIX 5. FOOD BALANCE OF THE REPUBLIC OF TAJIKISTAN (continued)

	Basic foodstuffs (physical quantities)	Bread and bread products in grain, thousand tons				Potatoes fresh, thousand tons				Vegetables and melons fresh, thousand tons				Fruits and berries fresh, thousand tons				Sugar and confectionery, in sugar, thousand tons			
		2003	2004	1 q. 2005	II q. 2005	2003	2004	1 q. 2005	II q. 2005	2003	2004	1 q. 2005	II q. 2005	2003	2004	1 q. 2005	II q. 2005	2003	2004	1 q. 2005	II q. 2005
1.	Stocks at the beginning of the period	223,2	215,7	121,8	65,7	87,8	234,9	264,7	101,2	15,9	95,0	21,6	2,0	32,3	13,0	3,3	0,8	10,4	47,4	20,6	13,5
2.	Food production in the country (+)	660,2	679,0	-	174	473,3	527,2	-	73,9	721,5	829,8	0,4	89,6	117,3	237,6	-	14,6	0,4	1,6	0,4	0,8
3.	Food imports (+)	353,3	276,8	100,5	257,7	0,9	0,6	-	0,2	0,3	2,4	0,2	0,7	0,3	4,8	1,9	-	95,8	109,1	18,5	33,1
	Availability (1-3) (+)	1236,7	1271,5	222,3	497,4	562,0	762,7	264,7	175,3	737,7	927,2	22,2	92,3	149,9	255,4	5,2	15,4	106,6	158,1	39,5	47,4
4.	Used for seed (-)	60,0	107,2	80,0	-	104,0	162,2	80,0	-	-	-	-	-	-	-	-	-	-	-	-	-
5.	Used as fodder (-)	-	-	-	-	-	-	-	-	-	-	-	-	-	-	-	-	-	-	-	-
6.	Losses (-)	12,0	12,1	-	-	25,0	30,0	7,0	-	78,0	100,0	1,7	-	7,0	9,1	0,1	0,1	-	-	-	-
7.	Food exports (-)	0,3	-	0,2	0,005	0,3	0,3	0,2	-	44,2	90,6	2,7	3,0	55,1	57,9	-	-	-	-	-	0,028
8.	Availability for consumption by the population (-)	908,7	927	76,4	437,0	197,8	304,5	76,0	-	520,5	715,0	15,8	83,3	74,8	172,4	4,3	14,5	59,2	109,6	25,0	9,2
9.	Other utilization (-)	40,0	3,4	0,3	0,3	-	1,0	0,3	0,3	-	-	-	-	-	12,7	-	-	-	27,9	1,0	1,0
	Consumption (4-9) (-)	1021	1049,7	156,9	437,3	327,1	498,0	163,5	37,4	642,7	905,6	20,2	86,3	136,9	252,1	4,4	14,6	59,2	137,5	26,0	10,2
10.	Stocks at the end of the period	215,7	121,8	65,7	60,1	234,9	264,7	101,2	137,9	95,0	21,6	2,0	6,0	13,0	3,3	0,8	0,8	47,4	20,6	13,5	37,2

	Basic foodstuffs (physical quantities)	Meat and meat products in carcass weight, thousand tons				Milk and dairy products, in milk, thousand tons				Eggs, million				Vegetable oil, thousand tons				Fish and fish products, tons			
		2003	2004	1 q. 2005	I1 q. 2005	2003	2004	1 q. 2005	I1 q. 2005	2003	2004	1 q. 2005	I1 q. 2005	2003	2004	1 q. 2005	I1 q. 2005	2003	2004	1 q. 2005	I1 q. 2005
1.	Stocks at the beginning of the period	0,2	8,7	0,6	0,5	1,9	0,6	0,6	0,6	1,0	3,3	1,0	0,5	0,7	0,9	5,0	1,0	11,0	11,0	6,7	0,7
2.	Food production in the country (+)	49,1	48,2	9,6	9,3	459,1	489,5	99,2	119,3	57,1	77,7	22,2	24,3	36,0	28,2	8,0	2,8	234	146,7	-	82
3.	Food imports (+)	3,6	6,2	3,3	2,0	0,8	1,6	0,3	2,4	43,2	48,0	17,8	^{11,4}	1,2	36,1	8,2	12,7	200	173	81	14
	Availability (1-3) (+)	52,9	63,1	13,5	11,8	461,8	491,7	100,1	122,3	101,3	129,0	41,0	36,2	37,9	65,2	21,2	16,5	445	330,7	87,7	96,7
4.	Used for seed (-)	-	-	-	-	-	-	-	-	-	-	-	-	-	-	-	-	-	-	-	-
5.	Used as fodder (-)	-	-	-	-	-	-	-	-	-	-	-	-	-	-	-	-	-	-	-	-
6.	Losses (-)	-	-	-	-	-	-	-	-	-	-	-	-	-	-	-	-	-	-	-	-
7.	Food exports (-)	-	-	-	-	-	0,1	-	--	-	-	-	-	-	-	-	-	-	-	-	-
8.	Availability for consumption by the population (-)	44,2	62,5	13,0	11,2	461,2	489,0	99,0	121,4	98,0	127,2	40,4	35,6	37,0	60,2	16,7	15,5	434	324,0	87,0	96,2
9.	Other utilization (-)	-	-	-	-	-	2,0	0,5	0,3	-	0,8	0,1	0,1	-	-	-	-	-	-	-	-
	Consumption (4-9) (-)	44,2	62,5	13,0	11,2	461,2	491,1	99,5	121,7	98,0	128,0	40,5	35,7	37,0	60,2	20,2	15,5	434	324,0	87,0	96,2
10.	Stocks at the end of the period	8,7	0,6	0,5	0,6	0,6	0,6	0,6	0,6	3,3	1,0	0,5	0,5	0,9	5,0	1,0	1,0	11,0	6,7	0,7	0,5

**APPENDIX 6. MONEY INCOMES, EXPENDITURES AND CONSUMPTION OF HOUSEHOLDS, IN THE REPUBLIC OF TAJIKISTAN,
BY DECILE POPULATION GROUPS (according to sampling household budget survey)**

	All households				of which:							
					Urban				Rural			
	the poorest 10% of population		the richest 10% of population		the poorest 10% of population		the richest 10% of population		the poorest 10% of population		the richest 10% of population	
I quarter of 2004	I quarter of 2005	I quarter of 2004	I quarter of 2005	I quarter of 2004	I quarter of 2005	I quarter of 2004	I quarter of 2005	I quarter of 2004	I quarter of 2005	I quarter of 2004	I quarter of 2005	
Money incomes , somoni	5,31	8,80	83,09	102,14	16,00	18,04	103,76	114,06	4,52	7,95	72,95	93,69
of which:												
labor incomes	2,70	6,02	37,63	7,05	14,54	15,48	63,49	87,38	2,34	5,30	19,71	20,97
social payments (pension, scholarships, benefits and other payments)	0,67	0,85	1,94	2,98	0,85	0,84	2,75	4,00	0,67	0,75	1,11	1,75
receipts from sales of agricultural products, feeds, livestock, etc.	1,21	1,48	9,52	17,45				0,93	1,21	1,50	17,95	29,57
Expenditures , somoni	12,30	14,95	72,18	92,09	17,65	17,81	98,00	99,62	12,87	15,56	59,88	85,22
of which:												
consumer expenditures	10,89	14,02	57,78	68,50	16,64	17,30	81,15	83,80	11,20	14,58	45,44	58,99
purchase of foods, including public catering	7,75	10,11	33,78	35,44	13,87	15,56	48,21	43,48	7,74	9,99	23,71	30,58
purchase of nonfoods for personal consumption	1,64	2,18	14,92	22,21	1,28	0,59	15,54	26,16	1,85	2,61	16,46	19,65
services	1,46	1,65	8,63	10,27	1,46	1,14	16,66	13,88	1,56	1,90	4,90	8,06
purchase of alcoholic beverages	0,04	0,07	0,44	0,58	0,02	0,01	0,74	0,28	0,05	0,08	0,37	0,70
Consumption of main foodstuffs, per 1 household member, kg												
Bread and bread products	11,76	11,38	15,47	15,57	8,72	7,20	11,67	10,70	12,35	11,67	18,25	18,44
Potatoes	2,28	2,50	3,41	3,95	1,56	1,92	3,94	3,86	2,42	2,61	3,36	3,87
Vegetables and melons	3,58	3,86	6,66	7,66	2,33	2,52	6,34	6,68	3,67	3,98	7,51	8,37
Fruits and berries, including dry	0,45	0,31	1,53	1,26	0,22	0,15	1,63	1,35	0,54	0,32	0,93	1,30
Meat and meat products	0,27	0,32	1,14	1,35	0,27	0,25	1,66	1,47	0,30	0,32	0,86	1,36
Milk and dairy products	2,45	2,03	5,60	6,60	0,96	0,87	6,33	6,09	2,66	2,39	5,11	7,45
Fish and fish products			0,02	0,01	0,01		0,05	0,03				
Eggs (pieces)	2	2	4	3	1	1	5	4	2	2	4	3
Sugar and confectionery	0,49	0,65	1,09	1,11	0,42	0,48	1,20	1,28	0,49	0,66	0,96	1,08
Vegetable oil and other fats	0,61	0,68	1,25	1,27	0,65	0,57	1,22	1,34	0,62	0,68	1,17	1,34

**APPENDIX 7. DISTRIBUTION OF HOUSEHOLDS AND POPULATION IN THEM BY PER CAPITA INCOME
IN THE REPUBLIC OF TAJIKISTAN (according to sampling household budget surveys, in %)**

	Distribution by money income in 1st quarter of 2004			
	Total income		Disposable income	
	Number of households surveyed	Population in them	Number of households surveyed	Population in them
Total number	925	5424	925	5424
Including those with monthly per capita income (somoni):				
below 5,00	0,6	0,5	0,7	0,7
5,01-8,00	1,6	1,3	1,6	1,2
8,01-11,00	2,1	2,6	3,0	3,8
11,01-14,00	6,4	8,6	8,4	11,7
14,01-17,00	9,8	12,6	10,2	12,4
17,01-20,00	10,2	11,9	9,4	10,4
20,01-23,00	9,4	10,3	9,9	10,8
23,01-26,00	9,3	9,8	8,8	9,3
26,01-29,00	5,4	5,9	6,2	6,2
29,01-32,00	6,1	5,8	6,8	6,5
32,01-35,00	6,3	6,1	4,6	4,7
35,01-38,00	5,4	5,4	5,8	4,9
38,01-41,00	4,9	3,6	4,7	3,7
41,01-44,00	3,1	2,7	3,7	2,7
44,01-47,00	4,0	3,0	3,0	2,2
47,01-50,00	2,9	1,9	2,2	1,5
50,01-53,00	2,6	1,9	2,0	1,2
53,01-56,00	0,7	0,4	1,0	0,5
56,01 and more	9,2	5,7	8,0	5,6

	Distribution by money income in 1st quarter of 2005			
	Total income		Disposable income	
	Number of households surveyed	Population in them	Number of households surveyed	Population in them
Total number	925	5394	925	5394
Including those with monthly per capita income (somoni):				
below 7,00	11,7	12,8	11,8	13,0
7,01-11,00	8,0	9,0	8,1	9,1
11,01-15,00	8,5	10,2	9,0	10,7
15,01-19,00	11,8	13,0	11,7	12,9
19,01-23,00	9,5	9,7	10,0	10,0
23,01-27,00	8,1	8,0	8,1	8,2
27,01-31,00	8,2	8,3	8,3	8,5
31,01-35,00	6,0	5,8	6,5	6,2
35,01-39,00	5,4	4,9	4,9	4,4
39,01-43,00	3,6	3,3	3,7	3,3
43,01-47,00	3,2	2,7	3,3	2,7
47,01-51,00	2,5	2,2	2,5	2,2
51,01-55,00	2,2	1,8	2,0	1,8
55,01-59,00	2,0	1,5	1,5	0,9
59,01-63,00	1,7	1,2	1,2	0,8
63,01-67,00	0,7	0,6	0,6	0,6
67,01-71,00	0,6	0,6	0,7	0,6
71,01-75,00	0,6	0,5	0,6	0,5
75,01 and more	5,7	3,9	5,5	3,6

APPENDIX 8. STRUCTURE OF AVERAGE MONTHLY EXPENDITURES OF POPULATION IN THE REPUBLIC OF TAJIKISTAN
(according to sampling household budget survey)

	I quarter of 2004						I quarter of 2005					
	Per 1 household member, somoni / month	of which:		Per 1 household member, in %	of which:		Per 1 household member, somoni / month	of which:		Per 1 household member, in %	of which:	
		Urban area	Rural area		Urban area	Rural area		Urban area	Rural area		Urban area	Rural area
Money expenditures	28,44	39,75	24,25	100,00	100,00	100,00	36,52	45,53	33,16	100,00	100,00	100,00
of which:												
Consumer expenditures	24,99	35,88	20,95	87,9	90,3	86,4	31,41	41,27	27,73	86,0	90,6	83,6
including:												
on foods	17,05	25,45	13,93	68,2	70,9	66,5	20,65	28,00	17,91	65,7	67,8	64,6
on nonfoods	4,82	5,38	4,61	19,3	15,0	22,0	6,85	8,00	6,43	21,8	19,4	23,2
including:												
clothes, footwear, fabrics	2,16	2,36	2,09	44,8	43,9	45,3	2,98	4,17	2,54	43,5	52,1	39,5
furniture and cultural and household appliances	0,45	0,54	0,42	9,3	10,0	9,1	0,65	0,65	0,64	9,5	8,1	10,0
medicines	0,32	0,44	0,28	6,6	8,2	6,1	0,53	0,61	0,51	7,7	7,6	7,9
building materials	0,47	0,19	0,58	9,8	3,5	12,6	0,80	0,05	1,07	11,7	0,6	16,6
fuel	0,13	0,15	0,12	2,7	2,8	2,6	0,21	0,10	0,25	3,1	1,3	3,9
tobacco goods, makhorka	0,15	0,19	0,14	3,1	3,5	3,0	0,18	0,18	0,18	2,6	2,3	2,8
alcoholic beverages	0,11	0,11	0,11	0,4	0,3	0,5	0,13	0,06	0,15	0,4	0,1	0,5
services	3,01	4,94	2,30	12,0	13,8	11,0	3,78	5,21	3,24	12,0	12,6	11,7
of which:												
housing and communal services	0,86	1,78	0,52	28,6	36,0	22,6	1,25	1,86	1,02	33,1	35,7	31,5
including payments for :												
dwelling space	0,05	0,12	0,03	5,8	6,7	5,8	0,03	0,07	0,01	2,4	3,8	1,0

	I quarter of 2004						I quarter of 2005					
	Per 1 house-hold member, somoni / month	of which:		Per 1 house-hold member, in %	of which:		Per 1 house-hold member, somoni / month	of which:		Per 1 house-hold member, in %	of which:	
		Urban area	Rural area		Urban area	Rural area		Urban area	Rural area		Urban area	Rural area
communal services	0,81	1,66	0,49	94,2	93,3	94,2	1,20	1,79	1,01	96,0	96,2	99,0
o/w electric energy	0,41	0,53	0,37	50,6	31,9	75,5	0,59	0,57	0,59	49,2	31,8	58,4
personal services	0,23	0,44	0,15	7,6	8,9	6,5	0,26	0,24	0,27	6,9	4,6	8,3
o/w repair and individual manufacture of clothes and footwear	0,04	0,07	0,03	17,4	15,9	20,0	0,04	0,07	0,02	15,4	29,2	7,4
cultural and educational services	0,04	0,01	0,05	1,3	0,2	2,2	0,05	0,01	0,01	1,3	0,2	0,4
payments for education	0,23	0,62	0,08	7,6	12,6	3,5	0,21	0,48	0,14	5,6	9,2	4,3
payments for medical services	0,08	0,16	0,05	2,7	3,2	2,2	0,14	0,35	0,06	3,7	6,7	1,9
payments for treatment in sanatoria and health resorts, including rest	0,00	0,00	0,00	0,0	0,0	0,0	0,00	0,00	0,00	0,0	0,0	0,0
transport services	1,49	1,69	1,42	49,5	34,2	61,7	1,69	1,98	1,58	44,7	38,0	48,8
communication services	0,03	0,08	0,01	1,0	1,6	0,4	0,05	0,10	0,03	1,3	1,9	0,9
legal services	0,01	0,01	0,00	0,3	0,2	0,0	0,03	0,04	0,03	0,8	0,8	0,9
Taxes, due, and other payments	0,65	1,73	0,24	2,3	4,4	1,0	0,89	2,57	0,22	2,4	5,6	0,7
Other expenditures	2,80	2,14	3,06	9,8	5,4	12,6	4,22	1,69	5,21	11,6	3,7	15,7

**DISTRIBUTION OF HOUSEHOLDS AND POPULATION IN THEM BY PER CAPITA CONSUMER EXPENDITURES
in first quarter of 2004 (according to sampling household budget survey), in % (continued)**

	Number of households surveyed	Population in them	Households consisting of:					Households having children below 16	of which households having			
			1 person	2 persons	3 person	4 persons	5 and more persons		1 child	2 children	3 children	4 and more children
Total number	925	5424	24	51	59	131	660	780	149	238	189	204

of which those with monthly per capita expenditures (somon) :

below 7,00	4,4	5,4			1,7	1,5	5,8	5,3	1,3	1,3	6,9	11,3
7,01-11,00	7,7	10,0	4,2		1,7	2,3	10,1	9,0	9,4	7,1	6,4	13,2
11,01-15,00	12,1	14,8		3,9	1,7	6,9	15,3	13,6	6,7	10,5	15,9	20,1
15,01-19,00	11,8	13,6	8,3	3,9	3,4	7,6	14,2	12,4	7,4	11,8	13,8	15,7
19,01-23,00	11,7	12,7	12,5	2,0	11,9	9,9	12,9	12,7	11,4	12,6	10,1	16,2
23,01-27,00	12,2	12,6		2,0	13,6	9,2	13,9	13,0	12,8	10,9	19,6	9,3
27,01-31,00	8,8	7,6	8,3	9,8	10,2	11,5	8,2	8,5	8,7	12,2	8,5	3,9
31,01-35,00	6,3	5,4	4,2	9,8	6,8	8,4	5,6	6,2	5,4	9,7	7,4	1,5
35,01-39,00	4,6	4,2	4,2	5,9	6,8	3,1	4,5	4,8	4,7	6,3	3,7	3,9
39,01-43,00	4,6	3,7	4,2	9,8	5,1	10,7	3,2	4,1	6,7	3,8	4,8	2,0
43,01-47,00	3,1	2,4		2,0	10,2	6,1	2,1	3,2	9,4	3,8	1,1	
47,01-51,00	1,6	1,0	8,3	3,9	5,1	2,3	0,6	0,9	2,0	0,8	0,5	0,5
51,01-55,00	1,9	1,2	4,2	5,9	3,4	5,3	0,6	1,2	2,0	2,1	0,5	
55,01-59,00	2,3	1,2	16,7	9,8	1,7	4,6	0,6	1,3	2,0	2,9		
59,01-63,00	0,7	0,4		2,0	1,7	2,3	0,2	0,4	0,7	0,4		0,5
63,01-67,00	1,1	0,5	4,2	9,8	1,7	1,5	0,2	0,5	2,0	0,4		
67,01-71,00	0,8	0,4	4,2	3,9	3,4		0,3	0,4		0,8		0,5
71,01-75,00	0,5	0,6				1,5	0,5	0,5	1,3	0,4	0,5	
75,01 and more	3,8	2,4	16,7	15,7	10,2	5,3	1,4	2,3	6,0	2,1	0,5	1,5

DISTRIBUTION OF HOUSEHOLDS AND POPULATION IN THEM BY PER CAPITA CONSUMER EXPENDITURES
in first quarter of 2005 (according to sampling household budget survey), in %

	Number of households surveyed	Population in them	Households consisting of:					Households having children below 16	of which households having			
			1 person	2 persons	3 person	4 persons	5 and more persons		1 child	2 children	3 children	4 and more children
Total number	925	5450	24	47	66	135	653	772	177	208	188	199

of which those with monthly per capita expenditures (somon) :

below 7,00	4,0	5,1			1,5		5,5	4,8	3,4	3,4	4,3	8,0
7,01-11,00	8,0	9,8			1,5	5,2	10,1	9,1	5,7	8,2	8,0	14,1
11,01-15,00	9,7	11,8		2,2	3,0	6,0	12,1	10,6	8,5	9,1	9,6	15,1
15,01-19,00	17,2	19,4	20,8	2,2	12,1	8,2	20,7	18,0	6,8	13,5	21,3	29,7
19,01-23,00	13,4	13,4	8,3	2,2	13,6	14,2	14,2	14,4	13,6	16,8	14,9	12,1
23,01-27,00	12,5	12,3		13,3	10,6	11,9	13,3	13,1	13,6	13,9	13,8	11,1
27,01-31,00	8,9	8,6	4,2	8,9	6,1	13,4	8,4	9,3	14,7	10,1	9,0	4,0
31,01-35,00	6,4	5,4	8,3	13,3	16,7	5,2	4,9	6,0	10,2	5,8	6,9	1,5
35,01-39,00	4,2	3,2	4,2	11,1	6,1	9,0	2,5	3,8	4,5	6,3	3,2	1,0
39,01-43,00	2,8	2,0	4,2	8,9	7,6	4,5	1,5	2,1	3,4	3,4	1,6	
43,01-47,00	2,5	1,9	8,3	8,9	3,0	3,0	1,5	1,9	3,4	1,9	0,5	2,0
47,01-51,00	2,8	2,2	4,2	4,4	3,0	7,5	1,5	1,8	2,8	1,9	1,6	1,0
51,01-55,00	2,1	1,5	8,3	8,9	1,5	3,0	1,2	1,4	2,3	1,4	2,1	
55,01-59,00	1,1	0,8	12,5		1,5	0,8	0,8	0,7	0,6	1,0	1,1	
59,01-63,00	0,7	0,4		6,7		0,8	0,3	0,4	0,6		0,5	0,5
63,01-67,00	0,2	0,2			1,5		0,2	0,1			0,5	
67,01-71,00	0,4	0,3			3,0	1,5		0,4	1,1	0,5		
71,01-75,00	0,1	0,0	4,2									
75,01 and more	3,1	2,1	12,5	8,9	7,6	6,0	1,2	2,2	5,1	2,9	1,1	

APPENDIX 9. PER CAPITA CONSUMPTION OF FOOD IN THE REPUBLIC OF TAJIKISTAN
(according to sampling household budget surveys)
(per month, kg)

	<i>I quarter of 2004</i>			<i>I quarter of 2005</i>		
	Total	of which:		Total	of which:	
		Urban area	Rural area		Urban area	Rural area
Bread products	13,06	10,73	13,95	12,62	10,24	13,50
Potatoes	2,68	2,63	2,71	2,78	2,75	2,79
Vegetables and melons	4,95	4,52	5,12	5,13	4,84	5,24
Fruits and berries, including dry	1,04	0,77	1,15	1,59	0,67	1,93
Sugar and confectionary	0,74	0,88	0,69	0,84	0,91	0,81
Meat and meat products	0,53	0,68	0,48	0,61	0,66	0,60
Fish products	0,01	0,01	-	-	0,01	-
Milk and dairy products	3,61	2,99	3,85	3,72	3,00	3,98
Eggs (pieces)	2	2	2	2	2	2
Vegetable oil and margarine	0,88	0,95	0,86	0,95	0,99	0,94

**FOOD SECURITY AND POVERTY
INFORMATION BULLETIN
OF THE REPUBLIC OF TAJIKISTAN**

/ Edited by Shabozov M.Sh. - Chairman
of the State Committee on Statistics
of the Republic of Tajikistan
734025 Tajikistan, Dushanbe, Bokhtar Street, 17 /

Editorial board:

Shabozov M.Sh. - Chairman of Editorial Board
Mukhammadieva B.Z., Asoev A.A., Ashurov I.S., Baimatov K.F., Gukasova T.P.,
Abdulloev M.A., Jdanova L.V., Ziaeva M.A., Kislitsina E.A., Rassolko V.I., Turaev B.T.

**Responsible for:
- sections of the Bulletin**

Vital and Employment Statistics	Kislitsina E.A.	27-80-88
Social Statistics	Budnikova E.V.	27-94-88
Prices, Household Budgets and Poverty Statistics	Turaev B.T.	27-56-28
Finances	Pulatova N.T.	27-98-71
Gross Domestic Product	Ziaeva M.A.	27-98-71
Trade, External Activity	Jdanova L.V.	23-32-48
Capital Construction	Nasriddionov A.S.	27-65-12
Agriculture	Abdulloev M.A.	27-43-29
Nature and Environment Statistics	Norov K.	27-82-66

-preparation of main document, systematization of
parts, and design:

Economic Analysis and International
Relations Department
Gukasova T.P.
Tel. 21-23-87
e-mail: stat@tojikiston.com

-publication:

Chief of Central Computer Center
of the State Committee on Statistics
of the Republic of Tajikistan
Baimatov K.F.
Tel: 27-96-09