

**STATE COMMITTEE ON STATISTICS
REPUBLIC OF TAJIKISTAN**

INFORMATION BULLETIN

**FOOD SECURITY AND POVERTY
IF THE REPUBLIC OF TAJIKISTAN**

№ 1 / 2007

Dushanbe - 2007

Statistical service is one of the effective methods for establishing the order and evaluation of prospects of economic agents activity. Under the conditions of market economy, it is not possible to insure the sustainable development without proper accounting, work analysis and resource planning.

In this respect, and in accordance with legislation, all enterprises, organizations, institutions, and all production and non-production subjects, independently of their form of ownership, have to submit all required complete and accurate reports in due time to the statistical bodies. Thereby, statistical recording is to be indispensable, complete and unexceptional on the whole territory of the republic.

Relevant state authorities have to take required actions to bring accounting system into the line with international standards.

EMOMALI RAHMON

Introduction

In accordance with European Commission Matrix on Policy Reform of Memorandum of Understanding on Food Security Program in the Republic of Tajikistan the decision about preparation and publishing of Quarterly Food Security Bulletin was made to ensure system of reliable operative information and analysis of current food security situation in the Republic of Tajikistan.

“Food security presumes that all people have access, at all time, to sufficient food required for an active and healthy life. Food security also means physical availability of food in sufficient quantities, accessibility of those foodstuffs for households (through the market and other sources, that suppose sufficient purchasing power), as well as consumption of food in quantities required for satisfying of nutritional needs”.

The purpose of the Bulletin is to bring together and systematize available information on food security in Tajikistan; i.e. the availability of food in the republic and outlook for food production, indicators on access to food, food use and utilization. The Bulletin also contains analysis of current food security situation in the Republic.

The base indicators for Food Security Bulletin are production of food, food availability and accessibility, areas under crops, agricultural production and productivity, main climatic conditions, health indicators, water supply, prices, and quantitative indicators reflecting situation on food market.

The Appendices to the Bulletin show indicators of Poverty Reduction Strategy Paper, information on nutritional status of various socio-economic groups of the population, as well as estimated data on food balance.

The presented Quarterly Food Security Information Bulletin of Tajikistan was prepared by State Committee on Statistics with participation of key Ministries and Departments (Ministry of Finance, Ministry of Health Care, Ministry of Labor and Social Protection of Population, Ministry of Education, Ministry of Transport and Communication, Hydro meteorological Agency under the Committee for Nature and Forestry Protection of the Republic of Tajikistan, etc.). The publication is prepared with technical and financial support of European Commission in the Republic of Tajikistan.

The publication is intended both for specialists and all interested persons.

All recommendations, suggestions and remarks related to the content of the Bulletin should be addressed to the State Committee on Statistics of the Republic of Tajikistan at the following address:

17 Bokhtar Street Dushanbe
734025 Tajikistan
Tel. (992 372) 212387, Fax (992 372) 214375
email: stat@tojikiston.com
<http://www.stat.tj>

CONTENTS

Introduction	139
Overview	143
CHAPTER I. SOCIO-ECONOMIC INDICATORS	145
1.1. Gross Domestic Product.....	145
1.2. Price and Tariff Indices	146
1.3. Foreign trade	147
1.4. Labor market	147
CHAPTER II. AVAILABILITY OF FOOD	148
2.1. Growth in agricultural production.....	149
2.1.1 Outlook of agricultural production	149
2.1.2. Spring crops	151
2.1.3. Livestock production	152
2.2. Producer prices.....	153
2.3. Trade in basic foodstuffs.....	155
2.4. Availability of food per capita	156
CHAPTER III. ACCESS TO FOOD.....	157
3.1. Consumer prices.....	157
3.2. Incomes and Expenditures	159
3.2.1. Incomes.....	159
3.2.2. Expenditures	160
3.3. Poverty in the Republic of Tajikistan	161
3.4. Food insecurity: households with spend more than 70% of expenditures on food.....	161
CHAPTER IV. USE AND UTILIZATION	162
4.1. Consumption of food products by the population.....	162
4.2. Food security indicators not related to income	164
4.2.1. Population morbidity.....	164
4.2.2 Immunization	166
4.2.3 Breastfeeding of children	166
4.2.4 Social Protection in the Republic of Tajikistan	167

METHODOLOGY	170
Glossary	172
List of abbreviations	172
Appendix 1. Review of hydro-meteorological conditions	173
Meteorological conditions	173
Hydrological conditions.....	174
Review of snow slides and mudflows.....	175
Appendix 2 PRSP Indicators in the Republic of Tajikistan.	176
Appendix 3. Changes in average wholesale prices in Tajikistan	180
Appendix 4. Changes in average consumer prices in Tajikistan.....	181
Appendix 5. Food balance	183
Appendix 6. Money incomes, expenditures and consumption of households, by decile population groups in the Republic of Tajikistan.....	191
Appendix 7. Distribution of households and population in them by per capita income in the Republic of Tajikistan.....	192
Appendix 8. Structure of average monthly expenditures of population in the Republic of Tajikistan	193
Appendix 9. Per capita consumption of food in the republic of Tajikistan	195

OVERVIEW

According to preliminary estimates, Gross Domestic Product (GDP) for January - March 2007 was valued at 2041452.4 thsd.somoni, and increased by 5.3% as compared to the corresponding period of 2006 (in constant prices).

Monthly inflation rate in consumer's sector made up 0.73% (against 1.13% in the corresponding period of the previous year).

During the first quarter of 2007, the increase of prices of foods outpaced those of non-foods. During 2007, the highest increase in prices was registered for cabbage (86.7%), carrot (30.9 %), light wheat flour (9.2%), pearl barley (9.0%), milk (8.7%), condensed milk (5.1%), semi-smoked sausages and mutton (3.7%), apples (3.3%), beef (3.1%), milk powder (2.0%), bread made from light wheat flour (1.7%), live fish (0.6%), animal and vegetable oil (0.4%), and onion (0.2%).

In 2006, in all regions of Tajikistan consumption of bread and bread products exceeded approved medical norm by 22.3% and amounted on average to 159 kg per one household member.

The results of the Household Budget Survey show that the share of expenditures for food in the structure of total household's expenditures accounted for less than 60% and decreased by 5.9% as compared to 2005. In total structure of household's expenditures for food, bread and bread products occupies the first place (34.9%)

In the first quarter of 2007, farms of all categories produced 16.2 thsd. tons of meat or 105.5% as compared to the similar period of the previous year, 104.3 thsd.tons of milk (102.8%), and 26.6 mln.eggs (110.5%).

As of 1 April 2007, the share of areas under cereals and leguminous cultures accounted for 80.2% of all sown areas, under technical cultures - 9.5%, of which under cotton - 5.4%, under feed crops - 6.3%, under potatoes, vegetables and melons - 3.6%.

In the first quarter of 2007 incidence of infection diseases among population decreased by 11.4% as compared to the first quarter of 2006. Cases of acute enteric infections account for 31.6% of total number of infection diseases. At the same time, number of cases of typhoid fever increased by 3%, mainly due to use of poor potable water. As compared to the similar period of the previous year, number of cases of acute enteric infections decreased by 44.2%, of which cases of bacterial dysentery - by 30%.

In the first quarter of 2007 as compared to the first quarter of 2006, number of cases of brucellosis decreased by 50%.

Number of newly discovered cases of malnutrition among children of 0-14 years increased and amounted to 301.1 cases per 100 thsd.children against 274.8 cases per 100 thsd.children in 2004.

Among all population applied to medical centers, endemic goitre accounts for more than 75% in total number of cases of endocrine system, dyspepsia and metabolic diseases. Decrease in number of cases of endemic goiter is observed for some time past.

Due to high cost of rubella vaccine, increase in cases of rubella is observed. Thus, in the first quarter of 2007 number of cases of rubella amounted to 318 against 11 cases in the first quarter of 2006.

In 2006 number of anemia cases decreased by 10.2% as compared to 2005.

As of 1 January 2007, 64406 persons received monthly social benefits, of them 43990 persons (68.3%) were disabled persons. The size of social benefit is liken to minimum old age pension. The average size of social benefit in 2006 was 17.35 somoni.

The average size of social benefit to disabled children in 2006 was 18.87 somoni.

CHAPTER 1. SOCIO-ECONOMIC INDICATORS

The mentioned below socio-economic indicators depict overall economic situation in the country, required for analysis of food security situation.

1.1 GROSS DOMESTIC PRODUCT

According to preliminary estimates, Gross Domestic Product (GDP) for January - March 2007 was valued at 2041452.4 thsd.somoni, and increased by 5.3% as compared to the corresponding period of 2006 (in constant prices).

The biggest impact was due to increase of production in industry, trade, agriculture, and services.

Table 1: Main socio-economic indicators

	2005	2006	<i>1 quarter of 2006</i>	<i>1 quarter of 2007¹</i>
Population, as of the end of period (million)	6,9	7,1	6,9	7,1
Nominal GDP (mln.somoni)	7206,6	9272,2	1546,1	2041,5
of which (in %):				
agriculture	21,4	18,4	8,5	8,3
industry	18,5	21,5	23,9	20,8
services	43,8	43,6	51,6	50,5
GDP per capita (somoni)	1051,2	1319,3	x	x
GDP growth , in % to the corresponding period of the previous year	6,7	7,0	6,2	5,3
State budget deficit / surplus (as percentage of GDP)	-1,5	0,4	3,8	9,0
Consumer Price Indices, <i>in % to the corresponding period of the previous year</i>	107,8	111,9	108,5	118,1
Price Indices for foodstuffs	108,9	113,6	110,2	120,3
Price indices for services	109,8	118,6	110,7	127,8
Exchange rate of somoni (per 1 US Dollar)	3,1175	3,2983	3,2087	3,4372
Officially registered unemployment rate	2,0	2,3	2,4	2,3
Number of registered unemployed, thsd.persons	43,6	47,7	49,0	49,4
in % to the corresponding period of the previous year	112,4	112,2	123,4	100,8

	2005	2006	1 quarter of 2006	1 quarter of 2007 ¹
Monthly average wages and salaries (somon)	83,58	116,81	98,75	146,52
in % to the corresponding period of the previous year	135,2	135,8	123,1	148,4
Trade balance (mln.USD)	-421,3	-326,4	-60,5	-156,3
Share of food in total imports, %	11,7	11,3	10,9	12,8
Share of food in total exports, %	3,3	2,7	1,8	2,9

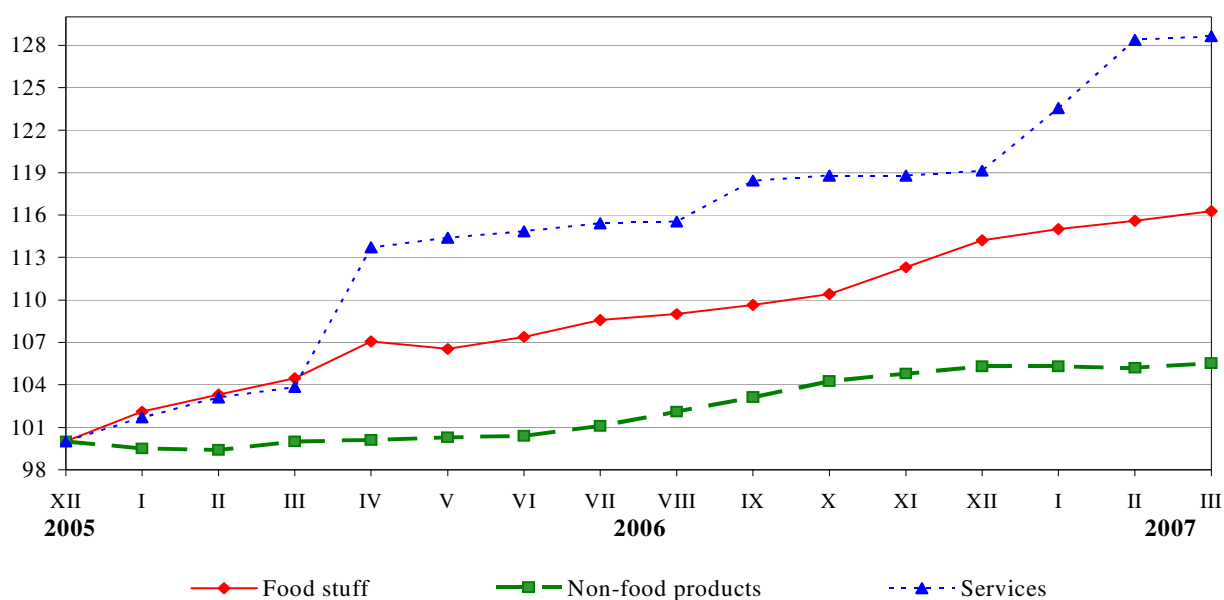
Source: State Committee on Statistics

¹ – preliminary data

1.2 Price and Tariff Indices

In the first quarter of 2007, consumer price index constituted 102.2%, of which for foodstuff - 101.8%, non-food products - 100.2%, and paid services to population - 108.0%. Monthly inflation rate in consumer's sector made up 0.73% (against 1.13% in the corresponding period of the previous year).

Graph 1: Consumer price indices for foodstuff, non-food products and paid services (at the end of each month, in % to December 2003)



During the first quarter of 2007, the increase of prices of foods outpaced those of non-foods. More detailed information on prices of food is available in the section 3 “Access to food”.

1.3 Foreign trade

In January-March 2007, foreign trade turnover of the Republic of Tajikistan including electric power and natural gas was valued at 891.5 million USD, which is higher by 196.3 mln.USD (or 28.2%) than in January-March 2006. The gap between exports and imports determined the deficit of trade balance valued at 156.3 million USD.

In January-March 2007, volume of exports amounted to 367.6 mln.USD, which is higher by 15.80% or 50.2 mln.USD than in the similar period of 2006. Volume of imports amounted to 523.9 mln.USD, which is higher by 38.6% or 146.0 mln.USD than in January-March 2006.

Major plant products in exports were fruits (7006 thsd.USD) and vegetables (1856 thsd.USD), while in imports it were wheat (9728 thsd.USD) and flour (20965 thsd.USD).

1.4 Labor market

According to preliminary estimates, the number of economically active population (employed and officially registered unemployed) in March 2007 was 2039.3 thsd.persons, of them 1989.9 thsd.persons (97.6%) were occupied in the economy, and 49.4 thsd.persons (2.4% of economically active population) had official status of unemployed.

As of the end of March 2007, 67.0 thsd.persons were registered in employment offices as looking for a job, which is by 13.9% less than at the corresponding date of the previous year, and by 3.7% higher than in February 2007.

From the beginning of 2007, 17.7 thsd.persons applied to employment offices for a job (which is more by 3.2% than in 2006), of them, 43.5% (7.7 thsd.persons) were young people aged 15-29. All applied persons were unemployed. 51.2% (9.1 thsd.persons) of them are persons who were looking for a job for the first time, and 50.4% (8.9 thsd.persons) did not have a profession / qualification.

As of the end of March 2007, the number of vacancies, offered by enterprises through employment offices decreased by 12.6% as compared to the similar period of 2006, and amounted to 13.8 thsd places. At the same time, the number of vacancies for blue-collar job decreased by 36.0% and amounted to 6.1 thsd.

As of the end of March 2007, number of unemployed officially registered in employment offices of the Ministry of Labor and Social Protection of Population of the Republic of Tajikistan amounted to 49.4 thsd., increasing by 5.3% as compared to the previous month. Females accounted for 54.7% of total number of unemployed (27.0 thsd.persons), and persons aged 15-29 accounted for 51.9% (25.6 thsd.persons).

In January-March 2007, number of professional trainings for registered unemployed and their engagement in public works through employment offices decreased as compared to the corresponding period of 2006. In January-March 2007, 1.6 thsd. registered unemployed were offered professional training by employment offices (which is less by 29.2% than at the corresponding period of the previous year). 0.1 thsd. persons have completed the training courses.

Besides, 4.3 thsd. persons were sent to public paid works (of which 4.2 thsd. persons were registered as unemployed), which is less by 21.8% than at the corresponding period of 2006.

Hidden unemployment means underemployment, when a part of workers are on forced leave or work during incomplete working week / working day due to downtime. In January - March 2007, 8.3 thsd. persons were on leave on initiative of administration, of them 7.4 thsd. persons (88.8%) were on leave without pay. 1.8 thsd. persons were working during incomplete working week / working day. Unemployment rate, including hidden unemployment, amounted to 2.8% of economically active population.

Real increase of wages and salaries (deflated by the CPI) in March 2007 made up 5.6% as compared to February 2007, and 24.3% as compared to March 2006.

In March 2007, the lowest wages and salaries in real sector were observed in agriculture and forestry, amounting to 42.63 somoni and 41.79 somoni, respectively. Average monthly salary in real sector in March 2007 was 149.38 somoni, increasing by 35.6% as compared to March 2006.

In non-production sphere, the highest salary remains in the area of finance and crediting (939.42 somoni in March 2007). Average monthly salary in non-production sphere in March 2007 was 146.41 somoni, increasing by 55.5% as compared to March 2006.

As of the end of March 2007, total arrears in salary payments for the republic (inclusive of arrears for previous years) amounted to 27523 thsd. somoni, of which arrears for March 2007 accounted for 11.3% (3101.8 thsd. somoni).

CHAPTER II. AVAILABILITY OF FOOD

Availability refers to the physical presence of food as a result of domestic production or market operations. On country level availability of food is determined by combination of food stocks, commercial imports, food aid and domestic production. The availability is also determined by the following elements: weather conditions, crop yield, livestock and productivity, producer prices for food, food prices in neighboring countries, as well as national policy defining production, trade, distribution and pricing.

2.1. Growth in agricultural production

The value of gross agricultural output in January - March 2007 in all categories of farms increased by 5.4% as compared to the similar period of the previous year and amounted to 230.5 mln.somoni (at current prices), of which: plant products - 1.0 mln.somoni (increased by 26.8%), and animal products - 229.5 mln.somoni (increased by 5.3%).

The value of gross agricultural output in all categories of farms in Soghd Oblast amounted to 78.5 mln.somoni (increased by 2.6%), Khatlon Oblast - 104.7 mln.somoni (by 8.3%), regions of the republican subordination - 39.7 mln.somoni (by 4.0%), and GBAO - 7.6 mln.somoni (by 5.5%).

2.1.1. Outlook for agricultural production

Climate influence on crop production

Very cold weather was observed during five days in the first decade of **January**, when day-time air temperature fluctuated from -1 and +4 degrees, night-time air temperature was 5-10 degrees below zero, and average daily air temperature was below the norm by 3-7 degrees .

Relatively warm weather was observed at the end of the month, when day-time air temperature was 12-20 degrees, and amounted to 23 degrees in the south regions of the republic.

Snowfalls were observed almost every day during second decade of the January. Snow cover depth reached 5-14 sm in valleys, 120-180 sm in southern slope of Gissar range, and up to 40 sm in mountain regions of republican subordination. In January, decrease in water discharge and water content in the rivers of the republic was registered, and only in the third decade of the month water content and discharge increased due to raise of temperature

Average monthly air temperature in **February** all over the republic exceeded the norm by 2-4 degrees, and only in Murgab region it was below the norm by 4 degrees. Monthly amount of precipitation was within and above the norm (apart from GBAO). In first decade of February, increase of water content in Yahsu, Kyzylsu rivers, and rivers of southern slope of Gissar range was observed, while in second and third decades water decrease in water content was registered.

The most part of **March** was characterized by warm weather, when average daily air temperature was below the norm. Amount of precipitations during the month on the most part of the republic exceeded the norm. Rains and water snow were observed during 15-19 days in valleys and foothills, while the norm is 9-16 days. In mountain regions water snow was observed during 14-18 days, while the norm is 15-20 days. During second and

third decades of March, increase of water content in Yahsu, Kyzylsu rivers, and rivers of southern slope of Gissar range was observed. Average monthly water discharge of the most rivers in first and second decades of the month was within and above the norm (100-130%), while in third decade it exceeded the norm and last years values (150-300%).

In March, content of Nurek reservoir decreased by 0.139 mln.m³ and amounted to 5988 mln.m³, which is higher by 0.011 mln.m³ than the level of the previous year. Water level in Kairakum reservoir decreased by 0.030 mln.m³ and amounted to 3453 mln.m³, which is higher by 0.133 mln.m³ than the level of the previous year.

Table 2: Water reservoirs as of 31 March 2007

Water reservoirs	Changes during the month, mln. cubic meters	Volume of water in 2006		Volume of water in 2007	
		mln. cubic meters	in % to total capacity	mln. cubic meters	in % to total capacity
Kayrakkum	-0,030	3320	79,8	3453	83,0
Nurek	-0,139	8421	80,2	5988	57,0

Table 3: Sown area and gross harvest

	2005	2006	1 st quarter of	
			2006	2007
Sown area (thsd.ha)	901,1	900,2	306,1	265,4
Winter crops	181,2	214,9	147,5	119,6
Cereal crops	181,2	214,9	147,5	119,6
Spring crops	719,9	685,3	158,6	145,8
Cereal crops	214,3	187,0	89,9	93,2
wheat	150,1	121,4	69,8	70,6
barley	31,3	31,7	16,9	18,9
Industrial crops	325,4	294,0	30,5	25,1
Potatoes	27,5	27,9	1,8	2,1
Vegetables	33,5	35,8	6,1	6,4
Melons	9,2	9,1	1,2	1,2
Gross harvest, thsd.tons				
Vegetables	718,5	759,2	0,5	0,6

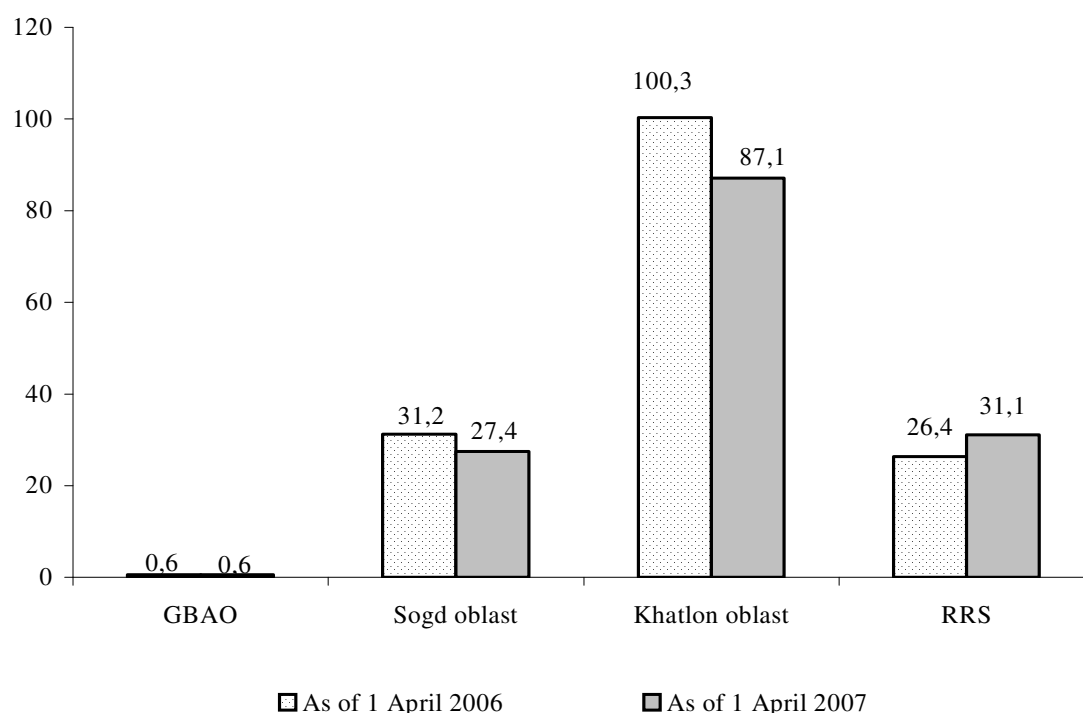
Source: State Committee on Statistics

As of 1 April 2007, the share of areas under cereals and leguminous cultures accounted for 80.2% of all sown areas, under technical cultures - 9.5%, of which under cotton - 5.4%, under feed crops - 6.3%, under potatoes, vegetables and melons - 3.6%.

2.1.2. Spring crops

As of 1 April of the current year, spring crops were sown on an area of 145.8 thousand ha, or 92% of the areas under spring crops at the corresponding time last year. Details on spring crops sowing by Oblasts are presented in Graph 2.

Graph 2: Area under spring crops (thsd.ha)



The area sown to potatoes amounted to 2.1 thsd.ha, which is higher by 0.3 thsd.ha than at the corresponding time last year. Similarly, vegetables were sown on 6.4 thsd.ha that is by 0.3 ths.ha higher than in the corresponding period of the last year.

**Table 4: Availability of seed for spring seeding works
as at the beginning of February 2007**

	Availability of seeds, thsd.tons	In percent of the required amount
Cereals and leguminous cultures (excluding maize)	26,6	43
of which:		
wheat	23,9	48
rice	0,2	9
Maize	0,7	28
Potatoes	9,6	28

Source: State Committee on Statistics

The above table shows that quantity of actually sowed agricultural crops by agricultural enterprises and dehkan farms was below the norm and didn't reach even a half of total needs.

2.1.3. Livestock production

As of 1 April 2007, number of cattle in farms of all categories increased by 6.1% as compared to the similar date of the previous year; the number of sheep and goats increased by 4.1%, poultry – by 7.7%. Increase in number of poultry was observed in farms of Soghd oblast (by 12.8%) and Khatlon oblast (by 14.9%).

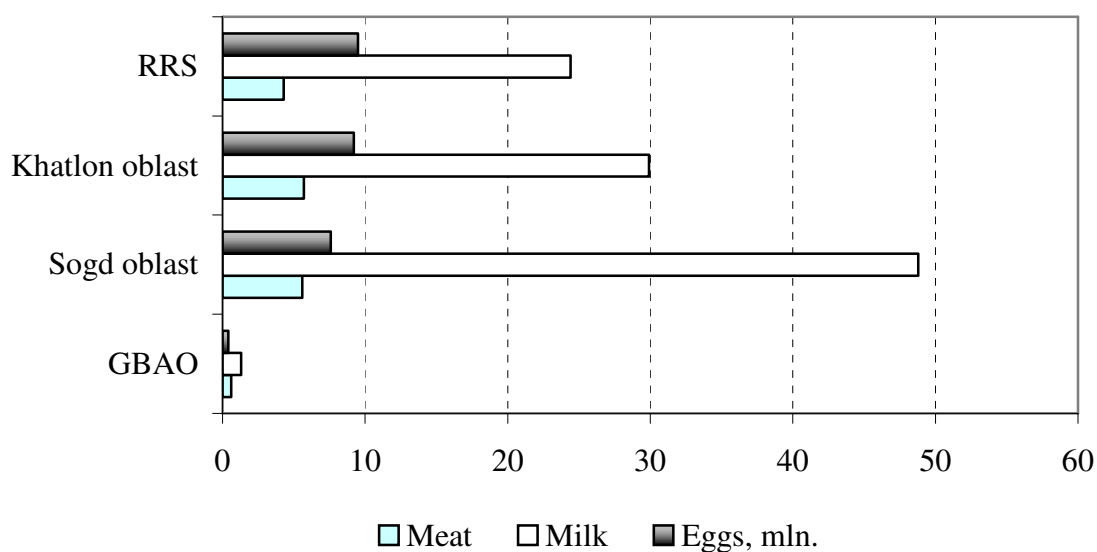
In the first quarter of 2007, farms of all categories produced 16.2 thsd. tons of meat or 105.5% as compared to the similar period of the previous year, 104.3 thsd.tons of milk (102.8%), and 26.6 mln.eggs (110.5%).

The average milk yield per cow in the first quarter of 2007 was 312 kg decreasing by 10.5% as compared to the corresponding period of the previous year. During the reporting period, in average 21 calves were received from every 100 female cows. The average output of eggs from 1 laying hen was 30 eggs (decreasing by 3.2% as compared to the corresponding period of the previous year).

Table 5: Main indicators of livestock production in the Republic of Tajikistan

	<i>2005</i>	<i>2006</i>	<i>I quarter of 2006</i>	<i>I quarter of 2007</i>
Production, thsd.tons				
Meat (slaughtered)	53,7	55,9	7,7	8,1
of which:				
Beef and veal	24,3	25,3	3,5	3,7
Mutton and goats meat	26,5	27,6	3,8	4,0
Poultry	0,6	0,6	0,1	0,1
Other meat	2,3	2,4	0,3	0,3
Milk	533,0	544,9	101,5	104,3
Eggs, mln.	98,7	104,7	24,1	26,6
Productivity				
The average milk yield per cow, kg	1597	1502	354	317
The average output of eggs per laying hen, pieces	123	122	31	30

**Graph 3. Production of main live-stock products
in all categories of farms in the first quarter of 2007, thsd. tons**



2.2. Producer prices

Table 6: Changes in producer prices

(somon / kg)

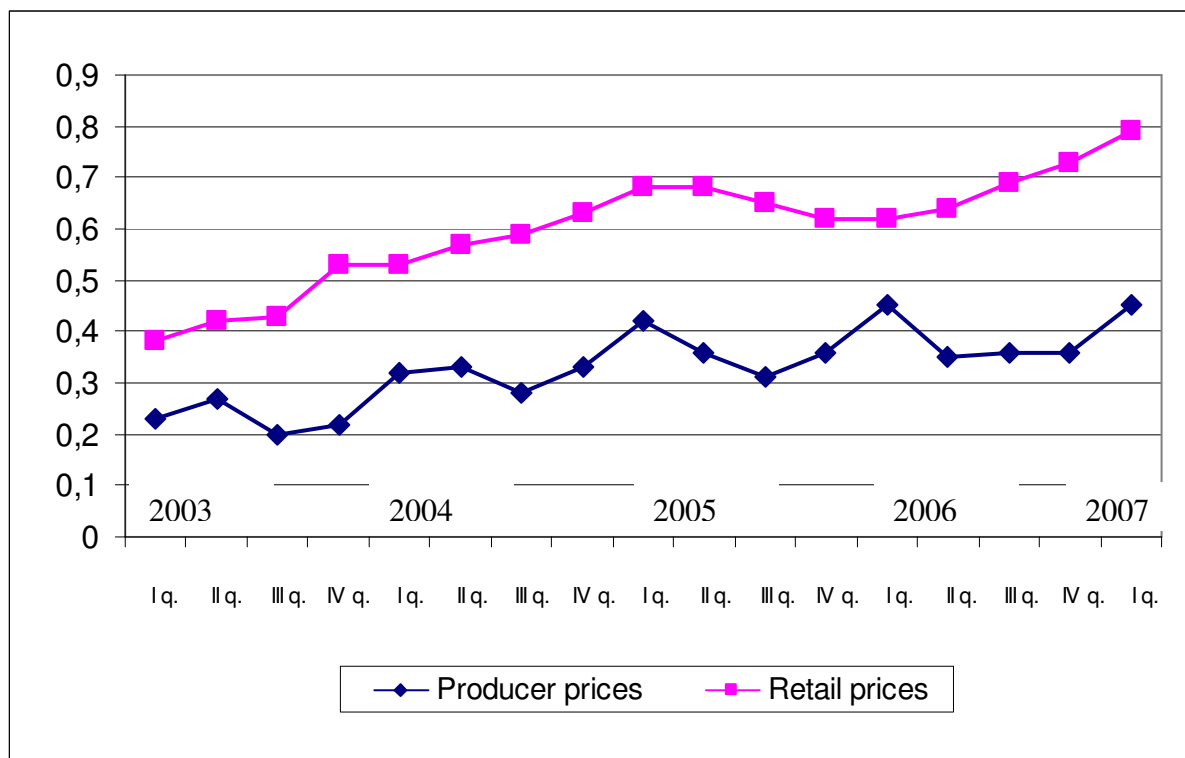
	2005				2006				2007
	I q.	II q.	III q.	IV q.	I q.	II q.	III q.	IV q.	I q.
Wheat	0,42	0,34	0,31	0,36	0,44	0,35	0,39	0,39	0,45
Milk	0,42	0,41	0,41	0,41	0,51	0,52	0,51	0,54	0,67
Potatoes	0,13	0,19	0,29	0,36	0,28	0,35	0,44	0,49	0,29

Source: State Committee on Statistics

In the first quarter of 2007, the imports of wheat increased by 7% as compared to the first quarter of 2006.

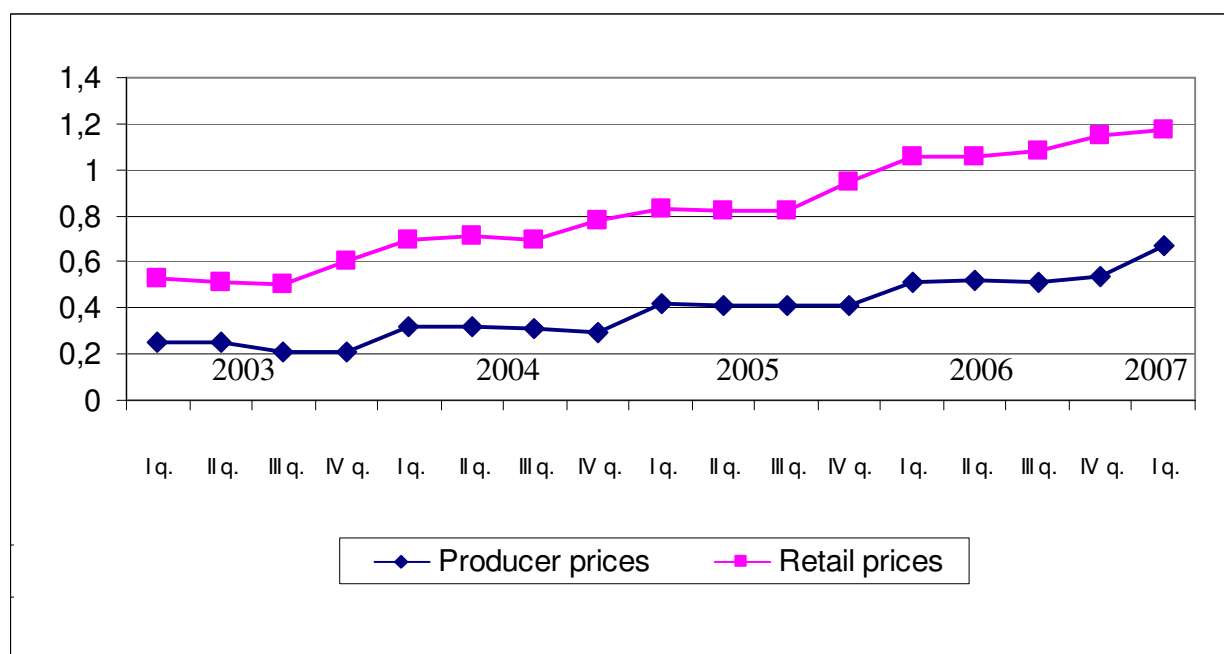
Graph 4. Trends in producer and retail prices of wheat

(somon/kg)



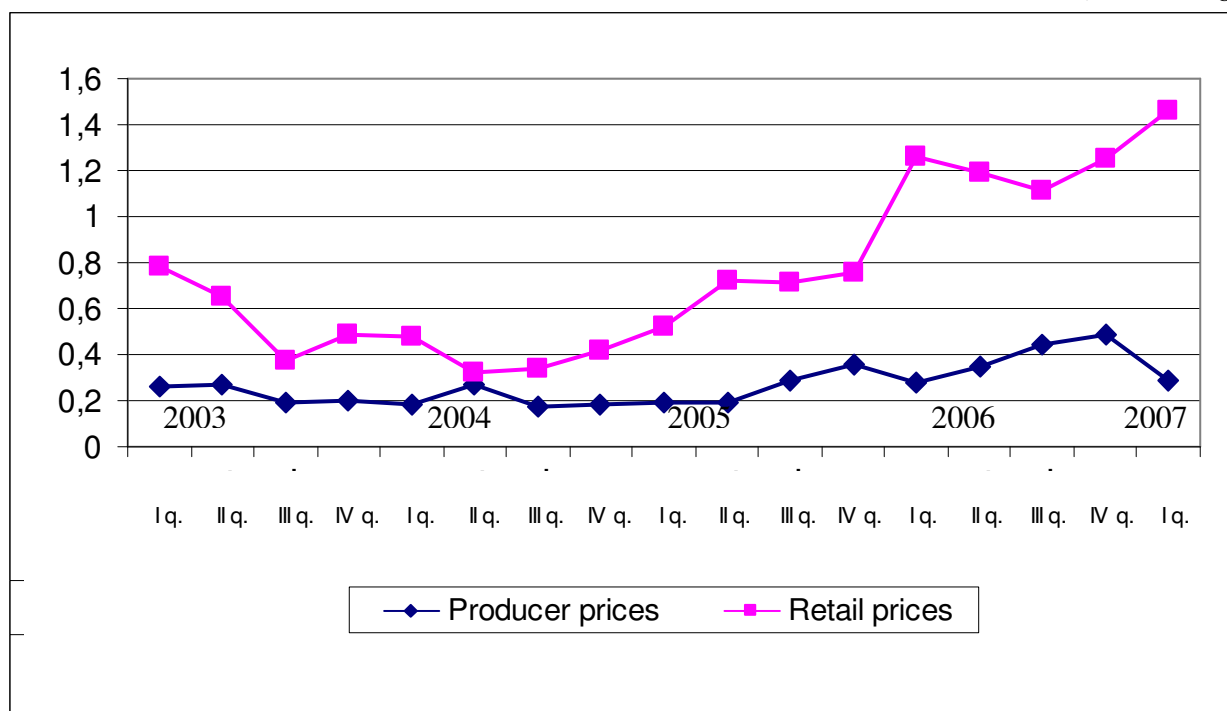
Graph 5. Trends in producer and retail prices of milk

(somon/kg)



Graph 6. Trends in producer and retail prices of potatoes

(somon/kg)



The given graphs show that change in retail prices is higher than in producer's ones. This trend is specific for all types of agricultural products (see Appendices 3 and 4).

2.3. Trade in basic foodstuffs

Share of food products in the total value of exports of Tajikistan accounted for 1.8% and 3.0% in the first quarters of 2006 and 2007, respectively. The share of food products in total volume of imports was well higher and accounted for 10.9% and 12.2%, respectively.

The major food products imported to the Republic of Tajikistan were wheat and flour (the greatest share), as well as sugar, vegetable oil, fruits, flour products (macaroni, noodles, bread, cakes, pastries), eggs, tea and others.

Imports of food products in the first quarter of 2007 increased by 24% as compared to the similar period of the previous year. Imports of milk and dairy products increased by 50%, vegetable oil - by 45%, sugar - by 23%. Imports of wheat increased by 7% amounting to 88.4 thsd.tons (against 82.5 thsd.tons in the first quarter of 2006), and imports of flour increased by 26% amounting to 141.1 thsd.tons (against 111.7 thsd.tons).

Table 7: Exports and Imports of basic food products*(thsd.tons)*

	<i>1 quarter of 2006</i>	<i>1 quarter of 2007</i>	<i>1 quarter of 2006</i>	<i>1 quarter of 2007</i>
	<i>Exports</i>		<i>Imports</i>	
<i>Food products</i>	20,5	40,6	261,9	325,0
of which				
wheat	-	-	82,5	88,4
flour	-	-	111,7	141,1
sugar	-	-	22,9	28,2
spaghetti, noodles, elbow and other products	-	0,0	2,7	2,4
vegetable oil	-	-	9,5	13,8
milk and dairy products	-	-	0,6	0,9
eggs	-	-	2,3	1,0
tea	-	-	1,4	0,9
vegetables	1,4	10,0	0,1	0,1
fruits and berries	1,4	2,2	5,0	2,2
fruit and vegetable juices	2,5	3,2	0,4	0,4
canned vegetables, tomatoes	0,5	0,2	0,2	0,2
Share of food products in total volume, %	1,8	3,0	10,9	12,2

2.4. Availability of food per capita

The availability of food per capita is calculated using a food balance. A food balance shows for each basic food commodity, the total physical availability and utilization of that foodstuff over a given period of time, usually 1 year. **Total physical availability** is the sum of stocks at the beginning of the period, production and imports of that commodity in a given period of time. **Total utilization** covers use for human consumption + use as animal seed + seed + losses + exports + stocks at the end of the period. In any one period, the availability and utilization of the same commodity must balance. Drawn up over a succession of years, food balances usually reveal a trend in total availability, imports, exports, and the availability of food for human consumption and for feed use. Dividing the annual amount of food available for human consumption by the population gives a key indicator of availability: the average availability of food per capita per year. This measure of food availability is a national average, which takes no account of households' access (i.e. ability to produce, purchase or otherwise obtain) to food.

Table 8: Consumption of foodstuff per capita*(kg / month)*

	2005	2006
Bread products (expressed in grain)	12,9	13,3
Potatoes	2,7	2,8
Vegetables and melons	6,6	6,3
Fruits and berries	3,2	4,0
Sugar and confectionery items	0,9	1,0
Meat and meat products	0,7	0,9
Milk and dairy products	4,0	4,9
Eggs (pieces)	2	2
Vegetable oil	1,0	1,1
Fish and fish products	0,01	0,01

Source: Household budget survey

The analysis of food balances shows that food availability remains stable during last years.

More detailed information is available in Appendix 5 “Food balance”.

CHAPTER III. ACCESS TO FOOD

Access to food refers to the ability of households to obtain adequate safe and appropriate foods to meet their needs for a healthy and active life. Access can be through production for own consumption, market purchases or donations / transfers.

3.1. Consumer's prices

In March 2007 retail prices of most basic foodstuffs increased significantly as compared to March 2006, except of prices for bread and apples (See Table 9, Appendix 4).

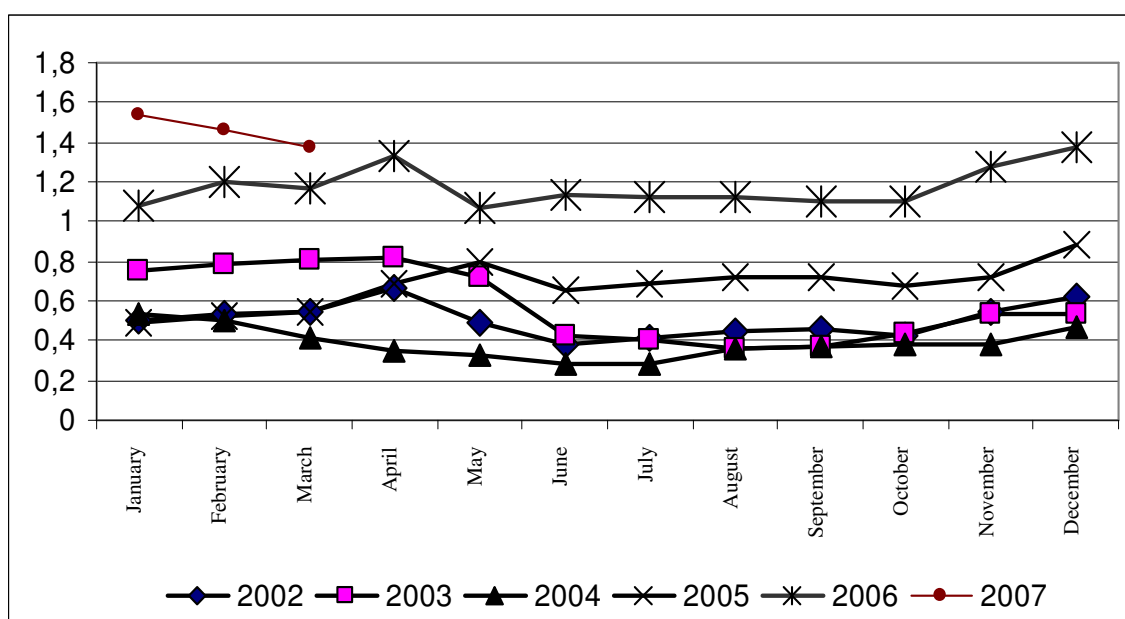
**Table 9: Average prices for some food products in consumer's sector
(average for Republic)**

	2006			2006	
	January	February	March	March	December
Beef	9,93	9,93	10,24	7,54	9,93
Animal oil	13,24	13,14	13,09	11,35	13,14
Cotton oil	3,16	3,25	3,26	2,59	3,22
Milk	1,06	1,15	1,15	0,81	1,03
Eggs (10 pieces)	4,48	4,24	4,12	2,49	4,66
Sand sugar	2,46	2,40	2,37	2,46	2,46
Salt	0,46	0,46	0,46	0,40	0,46
Light wheat flour	1,09	1,15	1,16	0,95	1,06
Bread made from light wheat flour	1,19	1,19	1,19	1,00	1,16
Rice	3,03	2,79	2,69	2,38	3,05
Potatoes	1,55	1,46	1,38	1,17	1,43
Onion	0,92	0,93	0,92	0,67	0,91
Carrot	0,46	0,49	0,60	0,28	0,46
Apples	1,51	1,54	1,56	2,21	1,51
Vodka	5,99	5,99	5,99	5,82	5,99

During 2007, the highest increase in prices was registered for cabbage (86.7%), carrot (30.9 %), light wheat flour (9.2%), pearl barley (9.0%), milk (8.7%), condensed milk (5.1%), semi-smoked sausages and mutton (3.7%), apples (3.3%), beef (3.1%), milk powder (2.0%), bread made from light wheat flour (1.7%), live fish (0.6%), animal and vegetable oil (0.4%), and onion (0.2%).

At the same time, the highest decrease in prices was registered for eggs (11.6%), rice (11.5%), pea (5.9%), sand sugar (3.7%), potato (3.5%), buckwheat (2.1%), pasta and semolina (1.6%), chocolate sweets (1.0%), margarine and poultry meat (0.1%).

Graphs 7: Average monthly retail prices for potatoes (somon / kg)



Potatoes. Retail prices of potatoes are subject to seasonal fluctuations and also to fluctuations in supply and demand. The highest seasonal price is normally recorded in the second quarter of each year, prior to the first new harvest. In the first quarter of 2007 prices for potato decreased as compared to December 2006 mainly due to import of potato (see Graph 7).

Flour. From the third quarter of 2006, the prices of flour started to increase and amounted to 1.06 somoni per kg in December. In the first quarter of 2007 prices continued to increase and reached 1.16 somoni per kg by the end of March 2007. Total increase in prices of flour for three months was 9.2%.

Beef. During 2006, the prices of beef were subject to increase, and by the end of 2006 reached 9.93 somoni per kg. As compared to December 2005 the prices increased by 32.2%. In March 2007, the prices reached 10.24 somoni per kg, increasing by 3.1% as

compared to December 2006.

Cotton oil. During 2006, the price of cotton oil was also subject to increase. Thus, in January 2006, the price of cotton oil was 2.66 somoni per a liter, while by the end of 2006 it reached 3.22 somoni per a liter. As compared to December 2005, the price cotton oil increased by 19.7%. In March 2007, average price of cotton oil was 3.26 somoni per a liter.

Carrot. Consumer prices of carrot in March 2007 amounted to 0.60 somoni per kg, increasing by 30.9% as compared to December 2006.

3.2. Incomes and expenditures

The source of information on household incomes and expenditures is the Household Budget Survey which is conducted on the basis of a monthly survey of 925 households and is comprised of the following: demographic information on the composition of the family, housing and infrastructure, volume of consumption in the family including domestically manufactured items, economic activity in both agricultural and non-agricultural sectors.

3.2.1. Incomes

In 2006 as compared to 2005, per capita cash income increased by 38.9% and amounted to 61.40 somoni. (See Table 10).

Table 10: Trends in population incomes and expenditures

	2005	2006
Average per capita incomes (somon / month)	44,20	61,40
Growth in real incomes (%)	121,5	124,1
Average monthly salary	83.58	116,81
Growth in real salary (%)	121.4	131.2
Average per capita expenditures (somon / month)	43,43	60,97
Growth in real expenditures (%)	122,4	125,5

Source: Household Budget Survey and current statistical data

The most important sources of cash incomes of households in 2006 continued to remain labor incomes - 43.4% and receipts from sales of agricultural products - 25.8%. In 2006,

the gap between the average incomes of the highest and the lowest deciles amounted to 9.3 times.

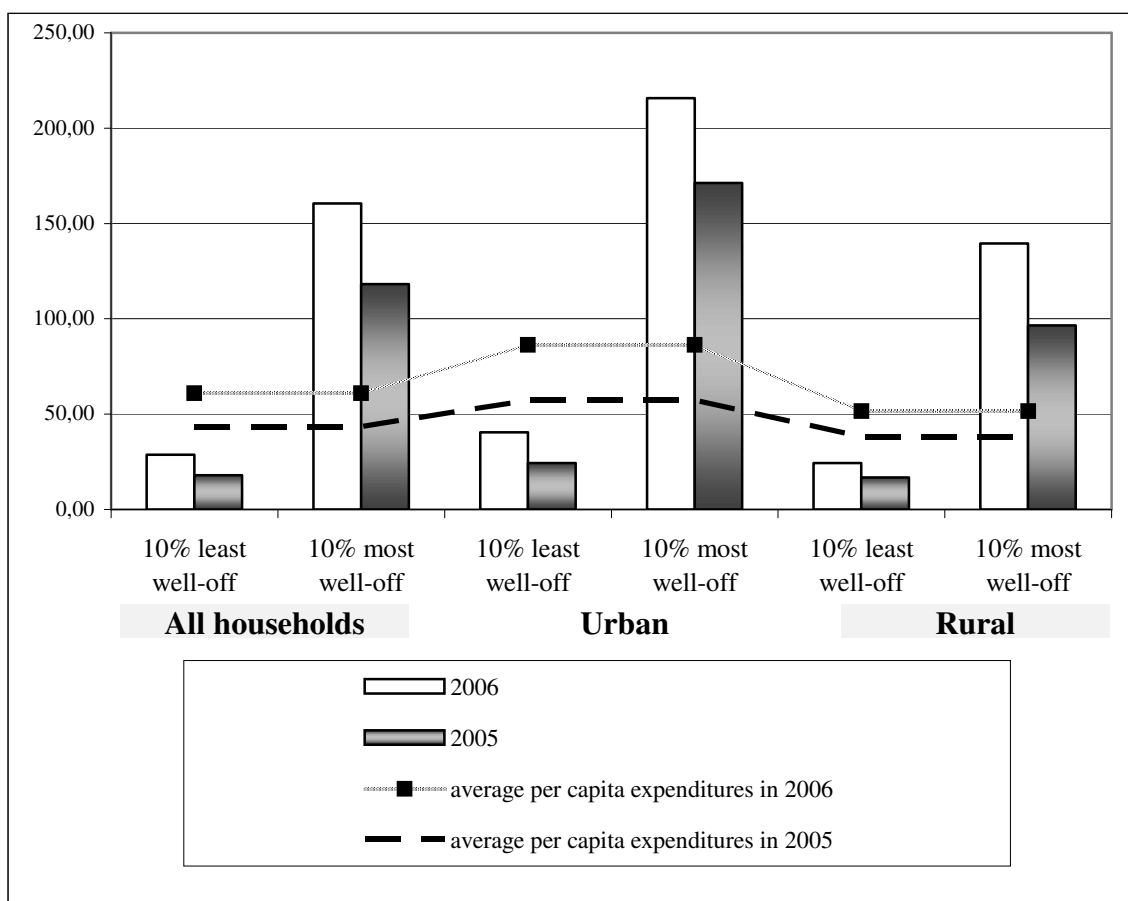
As of the end of December 2006, total arrears in salary payments for the republic made up 23.9 mln.somoni.

3.2.2. Expenditures

In 2005 and 2006, average expenditures of population have risen mainly due to increase in prices (see Appendix 10 and Graph 7).

The gap between expenditures of the highest and the lowest deciles decreased from 6.6 times in 2005 to 5.8 times in 2006.

Graph 8: Growth of per capita expenditures by decile groups in 2005 and 2006



3.3. Poverty in the Republic of Tajikistan

Poverty and food & nutrition insecurity are closely related and form a vicious circle. Food and nutrition insecurity is defined as “When people lack secure access to sufficient amounts of safe and nutritious food for normal growth and development and an active and healthy life. It may be caused by the unavailability of food, insufficient purchasing power, inappropriate distribution, or inadequate use of food at the household level. Food insecurity, poor conditions of health and sanitation, and inappropriate care and feeding practice are the major causes of poor nutritional status. Food insecurity may be chronic (persistent), seasonal or transitory.

When determining poverty rate many factors that can be grouped into three groups should be considered:

- ◆ Incomes (total family income by sources)
- ◆ Wealth (movable assets and real estate, housing conditions, communal services)
- ◆ Population (access to primary health services and education, occupational activities, employment, unemployment)

Indicators of Poverty Reduction Strategy of the Republic of Tajikistan are given in Appendix 2.

3.4. Food insecurity: households spending more than 50% of expenditures on food

Food insecurity means a situation when people have no regular physical, economic or social access to adequate quantities of qualitative and safe food required for their nutrition, which meets their preferences for an active and healthy life.

The results of the Household Budget Survey show that the share of expenditures for food in the structure of total household's expenditures accounted for less than 60% and decreased by 5.9% as compared to 2005. The share of expenditures for food in urban area decreased by 8.8%, and in rural area - by 1.4%. At the same time, pensioners spend for food 69.4% of total consumer expenditures (Table 11).

**Table 11: Share of consumer expenditures for food
in total structure of household expenditures, in per cent**

	2005	2006
Republic of Tajikistan	63,7	57,8
Urban	67,8	59,0
Rural	61,4	60,0
Oblasts		
Dushanbe	84,4	56,1
GBAO		
Soghd oblast	55,9	50,5
Khatlon oblast	66,6	66,9
RRS	65,8	57,4
Vulnerable groups of population		
Households having 3 and more children	64,8	58,9
Pensioners	74,6	69,4

More detailed information on expenditures, incomes and deciles is available in Appendix 6.

CHAPTER IV. USE AND UTILIZATION

Use of food refers to the selection, composition, preparation and allocation of food within the family. Utilization of food refers to the ability of the human body to take and use food within the body. Food use covers knowledge of appropriate diets, and proper allocation of food. The ability of the body to utilize food is affected by its state of health and access to clean drinking water, access to basic health services, etc. The ultimate measure of food security is the nutritional status of the population.

4.1. Consumption of food products by the population

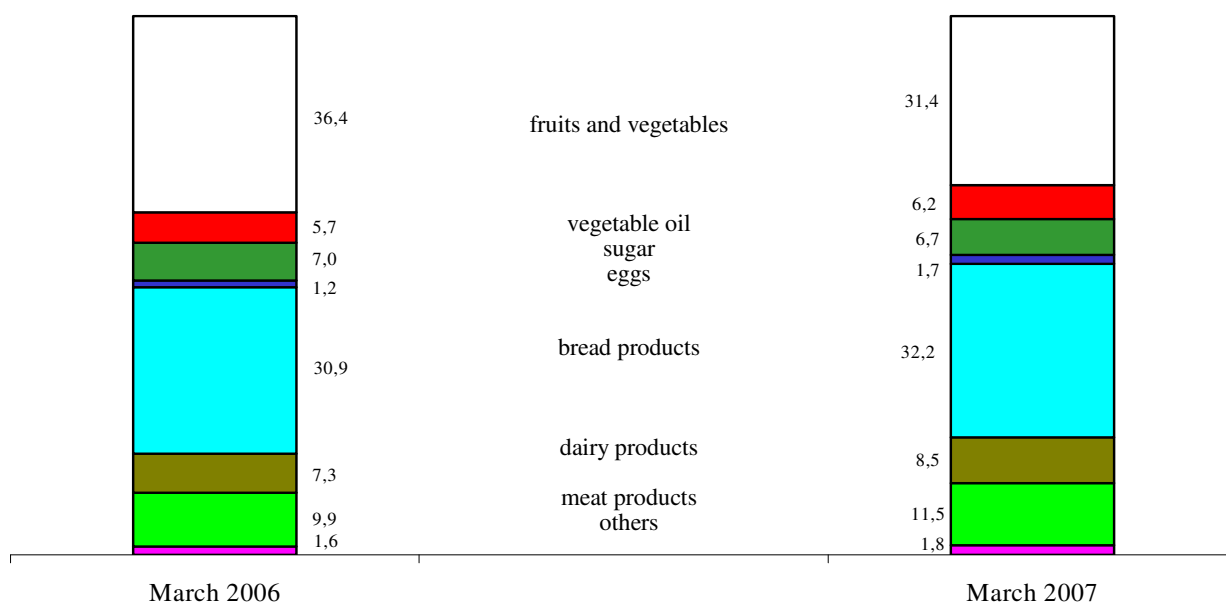
One of the measurements of food and nutritional insecurity is the calculation of daily calorie intake per one household member. The average daily calorie intake in 2005 was 2106.53 Kcal per capita, which is higher than the recommendations of the World Health Organization (WHO) (2100 Kcal per a day). In 2006, the average daily calorie intake increased to 2219.09 Kcal per capita.

In 2006, in all regions of Tajikistan consumption of bread and bread products exceeded approved medical norm by 22.3% and amounted on average to 159 kg per one household member.

In 2006, average consumption of potatoes in Tajikistan amounted to 33.2 kg per capita, vegetables and melons – 75.4 kg, milk and dairy products – 58.8 kg, meat and meat products – 10.2 kg, vegetable oil – 13.1 kg, eggs - 24 pieces, sugar and confectionery – 12.1 kg, and fruits – 48.4 kg. In total structure of household's expenditures for food, bread and bread products occupies the first place (34.9%).

The cost of *consumer's basket*, at actual consumption (according to household survey 2006) amounted to 53.37 somoni per one household member in prices of end of March 2006, while the cost of food basket according to rational nutritional standard would amount to 113.63 somoni.

Graph 9: Structure of consumer's basket in March 2006-2007
(as of the end of the month, in %, per one household member)



Appendix 9 shows the detailed information on per capita food consumption in the households of the Republic of Tajikistan.

Table 12: Nutritional values of foods consumed per a day (excluding beer and wine)

	Per one household member per a day	of which:		Per one household member per a day	of which:	
		urban area	rural area		urban area	rural area
	2005			2006		
Proteins, gr.	47,90	38,84	51,41	50,37	42,11	53,43
of which animal, gr.	5,87	5,04	6,19	7,12	6,84	7,23
Fats, gr.	46,70	45,03	47,39	51,03	52,69	50,41
of which animal, gr.	7,21	7,32	7,17	9,20	10,84	8,59
Carbohydrate, gr.	366,47	298,59	392,82	381,36	320,26	403,96
Caloric value of consumed food, k/calories	2106,53	1823,12	2217,15	2219,09	1990,10	2303,61
of which animal, gr.	105,53	94,18	109,93	131,52	138,10	129,06

4.2. Food security indicators not related to income

4.2.1 Population morbidity

The greatest number of cases of infectious diseases falls on spring and summer periods when population consumes more water and fresh vegetables and fruits. In this period, incidence of tuberculosis and brucellosis, caused by infected animal food is increasing.

Table 13. Population morbidity caused by some specific infection diseases

	2005	2006	1 st quarter of 2006	1 st quarter of 2007
Total number of registered cases	102907	90650	10851	9616
Acute enteric infections	79927	67171	5450	3043
of which:				
Bacterial dysentery	2103	1735	274	192
Typhoid fever	2010	1419	233	240
Tuberculosis	4204	4043	833	962
Brucellosis	1614	1476	263	132

In the first quarter of 2007 incidence of infection diseases among population decreased by 11.4% as compared to the first quarter of 2006. Cases of acute enteric infections account for 31.6% of total number of infection diseases. At the same time, number of cases of typhoid fever increased by 3%, mainly due to use of poor potable water. As compared to the similar period of the previous year, number of cases of acute enteric infections decreased by 44.2%, of which cases of bacterial dysentery - by 30%.

During the reporting period, increase in number of cases of tuberculosis by 15.5% as compared to the first quarter of 2006 was observed.

In the first quarter of 2007 as compared to the first quarter of 2006, number of cases of brucellosis decreased by 50%.

Table 14. Morbidity of children (0-14) by some specific infection diseases

	2005	2006	1 st quarter of 2006	1 st quarter of 2007
Total number of registered cases	77361	69357	7457	6450
Acute enteric infections	65827	56485	4515	2325
of which:				
Bacterial dysentery	760	731	105	58
Typhoid fever	810	535	87	123
Tuberculosis	291	275	44	60
Brucellosis	226	191	28	17

In the first quarter of 2007 incidence of infection diseases among children aged 0-14 decreased by 13.5% as compared to the first quarter of 2006. Cases of acute enteric infections account for more than 36% of total number of infection diseases. As compared to the similar period of the previous year, number of cases of acute enteric infections decreased by 48.6%, of which cases of bacterial dysentery - by 45%. At the same time, number of cases of typhoid fever increased by 41.4%.

During the reporting period, increase in number of cases of tuberculosis among children of 0-14 years old by 36.4% as compared to the first quarter of 2006 was observed.

In the first quarter of 2007 as compared to the first quarter of 2006, number of cases of brucellosis decreased by 39%.

Table 15: Nutritional status indicators

	<i>Total number of persons on the dispensary books</i>			<i>of which cases revealed for the first time (new cases)</i>		
	<i>2004</i>	<i>2005</i>	<i>2006</i>	<i>2004</i>	<i>2005</i>	<i>2006</i>
Number of children of 0-14 years old suffering from malnutrition	6351	5836	4655	7104	7363	7737
per 100 000 children of this age group	246,2	224,5	180,9	274,8	283,2	301,1
Population suffered from endemic goitre, total	134495	114500	94612	123802	109500	91745
per 100 000 population	1983,6	1654,6	1336,4	1845,0	1598,5	1310,6
of which children below 14 years old	75528	54553	42193	59204	53166	39377
per 100 000 children of this age group	2928,0	2098,2	1640,0	2290,3	2044,8	1532,2
Population suffered from anemia, total	112850	82776	82693	113436	105076	108690
per 100 000 population	1664,4	1196,2	1168,0	1675,5	1533,9	1552,7
of which children below 14 years old	23031	23720	21052	24816	25443	22846
per 100 000 children of this age group	892,8	912,3	818,2	960,0	978,6	889,0

Source: Ministry of Health Care of the Republic of Tajikistan

Number of newly discovered cases of malnutrition among children of 0-14 years increased and amounted to 301.1 cases per 100 thsd.children against 274.8 cases per 100 thsd.children in 2004.

Among all population applied to medical centers, endemic goitre accounts for more than 75% in total number of cases of endocrine system, dyspepsia and metabolic diseases. Decrease in number of cases of endemic goiter is observed for some time past.

In 2006 number of anemia cases decreased by 10.2% as compared to 2005.

4.2.2 Immunization

The immunization of children in all regions of the Republic is very important measure for prevention of infectious diseases.

Table 16. Percentage of children below 1 year immunized against vaccine-controlled diseases in the Republic of Tajikistan

	<i>BCG</i>		<i>General Polio-3</i>		<i>DPT3</i>		<i>Measles-1</i>		<i>Hepatitis B-3</i>	
	2005	2006	2005	2006	2005	2006	2005	2006	2005	2006
Total	93,2	95,9	95,5	94,8	94,5	96,1	96,7	97,6	92,5	94,2

Source: Ministry of Healthcare of the Republic of Tajikistan

Due to high cost of rubella vaccine, increase in cases of rubella is observed. Thus, in the first quarter of 2007 number of cases of rubella amounted to 318 against 11 cases in the first quarter of 2006.

Similarly, number of cases of acute hepatitis increased and accounted for 28.8% of total infection diseases in the first quarter of 2007. As compared to the similar period of 2006, number of cases of acute hepatitis increased by 100%.

4.2.3 Breastfeeding of children

The *Program on breastfeeding* was a new policy and contributed a lot to introduction of exclusive breastfeeding of new-born children, decrease of their morbidity and mortality.

Table 17. Breastfeeding of children during first year of life

	2003	2004	2005	2006
Number of children exclusively breastfed during:				
children of 0-4 months	129798	123488	126338	123477
as percentage of the total number of children aged 1 year in the reporting period	85,7	87,9	87,1	84,8
children of 0-7 months	114568	102791	94522	100416
as percentage of the total number of children aged 1 year in the reporting period	75,7	72,3	65,1	69,0

Source: Ministry of Health Care of the Republic of Tajikistan

4.2.4 Social Protection in the Republic of Tajikistan

In accordance with article 103 of Labor Code of the Republic of Tajikistan, and with the purpose to strengthen social protection of population and to increase salaries of employees of state-financed organizations and social pensions, the President of the Republic of Tajikistan by his Decree dated 16 March 2007 No.219 “About increase in official salaries of employees of state-financed organizations and social pensions” resolved the following (effective from 1 April 2007):

- additional payments to teachers of general education schools (schools, lyceum, gymnasiums, boarding-schools of all types) to be provided as follows:

- a) for class management - 15% of pay rates

- b) for checking of exercise books - 20% of pay rates.

- official salaries of employees of primary medical care establishments to be increased by 30%, and official salaries of other employees in health sector to be increased by 10%;

- official salaries and base rates for employees of state-financed organizations to be increased by 15%;

- official salaries of top officials and specialists of central bodies of the Presidium of Academy of Sciences, Academy of Pedagogical Science, and Academy of Agricultural Science of the Republic of Tajikistan to be liken to salaries of government employees, top officials and specialists of central bodies of ministries of the Republic of Tajikistan;

- official salaries of sectorial centralized accounting departments of local government bodies, village and rural djamoats responsible for accounting, to be liken to salaries of specialists of local government bodies;

- social pension to citizens of the Republic of Tajikistan to be increased by 50%.

Table 18: Social benefits by types*somoni*

<i>Types of social benefits</i>	2004	2005	2006
Children-invalids ¹	6,00	12,00	20,00
Invalids from childhood ²	7,03	11,89	18,87
of which:			
of 1 st group	6,83	13,01	18,86
of 2 nd group	7,09	11,63	18,21
Invalids due to industrial injuries or occupational disease	30,94	55,74	89,85
of 1 st group	20,17	55,12	71,77
of 2 nd group	38,80	61,92	113,19
of 3 rd group	19,83	44,11	55,20
Invalids due to general disease	25,80	39,00	57,50
of 1 st group	26,61	35,14	59,42
of 2 nd group	26,95	40,83	58,55
of 3 rd group	20,49	31,78	51,73
Elderly citizens (old-age pension)	15,25	25,02	39,57
Elderly citizens in high-mountainous regions ³	35,19	53,95	86,38
Women born 5 and more children and Mothers - invalids from childhood	12,44	19,01	33,30
Children in case of loss of bread-winner	9,86	15,94	23,30
Orphans ⁴	18,76	25,16	43,20

Source: Ministry of labour and social protection of population

1) Minimum size of disability benefits

2) Average size of monthly social benefits

3) Persons who worked and lives permanently in Murgab region of GBAO

4) Receiving surverior's pensions

As of 1 January 2007, 64406 persons received monthly social benefits, of them 43990 persons (68.3%) were disabled persons. The size of social benefit is liken to minimum old age pension. The average size of social benefit in 2006 was 17.35 somoni.

Table 19. Number of disabled persons registered in social protection bodies
(at the end of each year, persons)

	2002	2003	2004	2005	2006
Number of disabled persons receiving disability pensions as well as social pensions and benefits, total	116161	118501	118928	125727	130850
per 1000 population	18,0	18,0	17,6	18,2	18,5
<i>including:</i>					
Number of disabled children below 16, receiving social pensions, total	19471	17693	16444	16963	19101
per 10000 children	66,6	60,2	59,6	60,6	63,0*

*) *estimates*

The average size of social benefit to disabled children in 2006 was 18.87 somoni.

METHODOLOGY

1. Methodology of food security analysis

“Food and nutrition security is achieved if adequate food (quantity, safety, quality, social-cultural acceptance) is available and accessible for and satisfactory used and utilized by all individuals at all time to live a healthy and active life”.

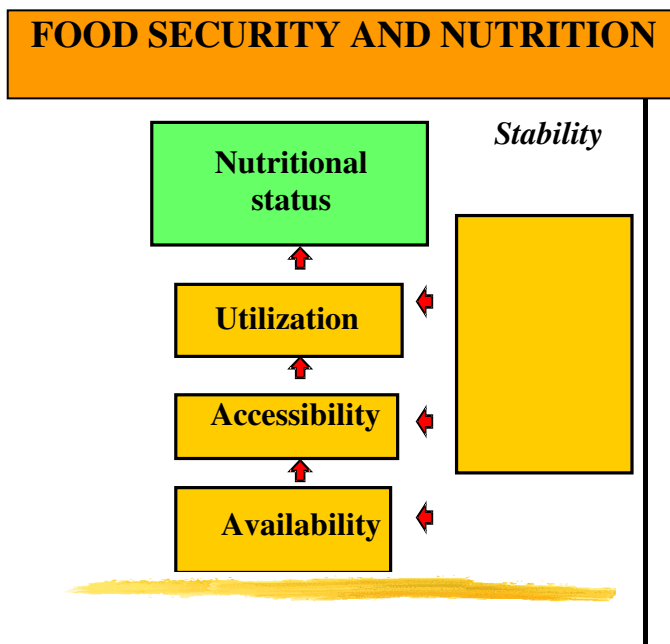
Availability physical existence of quantitatively and qualitatively adequate and safe food items.

Access: all households and household members have sufficient resources to obtain appropriate food (*through* production, purchase or donation)

Use and utilization: adequate knowledge, health and sanitation to enable the human body to digest and utilize that food

Stability: continuous ensuring of availability of, access to and appropriate use and utilization of food. If not, individuals will suffer from chronic or transitory food insecurity

For case of reference the four pillars of food and nutrition security are pictured below:



All four dimensions need to be fulfilled if there is to be food and nutrition security. As individuals and households live in a society, the 4 dimensions of FNS need to co-exist at

all levels, from the individual and household level (**micro level**), to the community (village, rayon, oblast) level, representing the **meso level**, and the nation and global level (**macro level**).

To monitor food security it is necessary to select relevant indicators and to measure these indicators at regular intervals.

2. Food balance methodology

Food balances for basic foodstuffs are compiled in natural terms.

In the course of the compilation of the food balance, the closing stocks as of December 31 in one year become the opening stocks on January 1 in the following year. With regard to imports and exports of products, the official data was used, in respect of production preliminary data.

Seed use is calculated on areas sown with agricultural crops as well as actual amount of seeds used for 1 ha. The calculation of lost was made according to the official norms.

In order to determine the number of eggs for the incubation the actual number of poultry offspring as well as norms on the number of chicken from the eggs laid for incubation.

The calculation of the volume of food products consumed by population as well as expenses on animal feeding was based on the data obtained during the survey of 925 households. The calculation of meat consumption also included the meat consumed in the course of observing national traditions (funeral, weddings, religious feasts, etc.)

Glossary

The *unemployed* - people of 16 and more who during period under review had no job (profitable occupation); were in search for a job i.e. applied to public employment offices or used alternative ways of job finding as well as were ready to start working.

Gross Domestic Product (GDP) - a general indicator of economic activity which is calculated in basic and market prices (nominal GDP) and in comparable prices (real GDP).

Consumer price index on goods and paid services to the population (CPI) - characterizes the change in the general price level for goods and services over time. The index measures the correlation of the value of actually set of goods and services during the given period to the value thereof during the basic period.

Average nominal monthly salary is calculated by dividing actually accrued salary fund to the staff and part-time employees by the number used for the calculation of average salary and number of months in a year during corresponding period.

Average daily per capita calorie intake measure the calories in the consumed food products per one household member as well as chemical composition in protein and fats.

Official unemployment rate - the ratio of people officially registered as unemployed to the number of economically active population, expressed in per cent.

List of abbreviations

GDP	Gross Domestic Product
GBAO	Gorno-Badakhshan Autonomous Oblast
CPI	Consumer price index on goods and paid services to the population
RRS	Regions of republican subordination
MDG	Millennium Development Goals

Appendix 1

Review of meteorological conditions on the territory of the Republic of Tajikistan during the first quarter of 2007

Meteorological conditions

The weather in the first and second decades of **January** was cold, while in the third one it became warmer. Average air temperature in the most regions was above the norm by 0.6-2.4 degrees, and in Gissar valley – by 0.6 - 1.5 degrees, while in the eastern part of GBAO it was below the norm by 4-11 degrees: in valleys - 0.4-4 degrees, in mountain regions - 3-10 degrees, and in the eastern part of GBAO – 22-29 degrees.

Very cold weather was observed during five days in the first decade of the month, when day-time air temperature fluctuated from -1 and +4 degrees, night-time air temperature was 5-10 degrees below zero, and average daily air temperature was below the norm by 3-7 degrees .

Relatively warm weather was observed at the end of the month, when day-time air temperature was 12-20 degrees, and amounted to 23 degrees in the south regions of the republic.

During other period of January, night-time air temperature was within -3 and -8 degrees and -3 and +2 degrees, and day-time air temperature fluctuated between +1 and +6 degrees, and +9 and +14 degrees.

Snowfalls were observed almost every day during second decade of the January. Snow cover depth reached 5-14 sm in valleys, 120-180 sm in southern slope of Gissar range, and up to 40 sm in mountain regions of republican subordination. Amount of precipitation varied with regions of the republic: 35-75% of the norm in Khatlon oblast, 70-130% of the norm in Soghd oblast, 20-105% of the norm in regions of the republican subordination, 100-165% of the norm in the western part of GBAO, and 5-70% of the norm in the eastern part of GBAO.

Fogs were registered on 10, 14, and 17 January.

Average monthly air temperature in **February** all over the republic exceeded the norm by 2-4 degrees, and only in Murgab region it was below the norm by 4 degrees, as follows: 3-8 degrees in valleys and foothills, 2-5 degrees below zero in mountains, and 13-18 degrees below zero in high altitudes.

In general, the month was characterized by high-temperature climate, and fall in temperature was observed only on 19, and 26-28 February. During these periods day-time air temperature fell to 10-12 degrees, and was within -2 to +2 degrees in valleys; while night-time air temperature was -3 -8 degrees. Average daily temperature during these days was below the norm by 3-8 degrees. During the rest part of the month, rise in temperature was registered: 14-19 degrees during day-time and 0-13 degrees at nights in RRS and Khatlon oblast, 10-15 degrees at day-time and -2+7 degrees at nights in Soghd oblast.

Monthly amount of precipitation was within and above the norm (apart from GBAO) and amounted to 23-73 mm in Soghd oblast (while the norm is 15-40 mm), 50-109 mm in Khatlon oblast (the norm is 45-115 mm), 136-170 mm in RRS (the norm is 40-140 mm), 9-35 mm in the western part of GBAO (the norm is 10-35 mm), and 1-3 mm in the eastern part of GBAO (the norm is 5-15 mm).

Heavy precipitations were registered on 2, 11, 12, 19, and 26 February (15-32 mm).

The most part of **March** was characterized by warm weather, when average daily air temperature was below the norm, while in GBAO was above the norm by -4 degrees: 6-11 degrees in valleys, -1 +2 degrees in mountain agricultural regions, 2-3 degrees in western part of GBAO, and 5-9 degrees below zero in high mountain arrears.

The warmest weather was registered on 6-8, 15-17, and 20-29 March, when day-time air temperature in valleys was 16-22, and average daily air temperature exceeded the norm by 2-4 degrees.

Relatively cold weather was registered on 1-4, 12, and 31 March, when day-time air temperature in valleys was 4-10 degrees, and average daily air temperature was below the norm by 2-5 degrees.

On 12 March, in Gissar valley and some settlements of Khatlon oblast, the rain turned into snow. Amount of precipitations during the month on the most part of the republic exceeded the norm. Rains and water snow were observed during 15-19 days in valleys and foothills, while the norm is 9-16 days. In mountain regions water snow was observed during 14-18 days, while the norm is 15-20 days.

Hydrological conditions

In **January**, decrease in water discharge and water content in the rivers of the republic was registered, and only in the third decade of the month water content and discharge increased due to raise of temperature.

Monthly water discharge of the most rivers was within the norm and last years values (80-120%). In rivers Isfara - Toshkurgan water content was above the norm by 60%.

During the month, content of Nurek reservoir decreased by 1.224 mln.m³ and amounted to 6883 mln.m³, which is less by 0.391 mln.m³ than the level of the previous year. Water level in Kairakum reservoir increased by 0.343 mln.m³ and amounted to 3453 mln.m³, which is less by 0.025mln.m³ than the level of the previous year .

In first decade of **February**, increase of water content in Yahsu, Kyzylsu rivers, and rivers of southern slope of Gissar range was observed, while in second and third decades water decrease in water content was registered.

Monthly water discharge of the most rivers was above the norm (105-170%), except for some rivers, where monthly water discharge was below the norm (55-110%).

During the month, content of Nurek reservoir decreased by 0.756 mln.m³ and amounted to 6127 mln.m³, which is less by 0.426 mln.m³ than the level of the previous year. Water level in Kairakum reservoir decreased by 0.030 mln.m³ and amounted to 3423 mln.m³, which is less by 0.059 mln.m³ than the level of the previous year.

Forecasts were proved by 80%.

During second and third decades of **March**, increase of water content in Yahsu, Kyzylsu rivers, and rivers of southern slope of Gissar range was observed. Maximum values of water discharge in Yahsu, Kyzylsu and Varzob rivers was registered on 26-31 March (increase by 100%).

Average monthly water discharge of the most rivers in first and second decades of the month was within and above the norm (100-130%), while in third decade it exceeded the norm and last years values (150-300%).

In March, content of Nurek reservoir decreased by 0.139 mln.m³ and amounted to

5988 mln.m³, which is higher by 0.011 mln.m³ than the level of the previous year. Water level in Kairakum reservoir decreased by 0.030 mln.m³ and amounted to 3453 mln.m³, which is higher by 0.133 mln.m³ than the level of the previous year.

Review of avalanches and mudflows

In **January**, no mudflows were registered and forecasted.

Two avalanches were forecasted with total duration of 8 days. Snowfall in southern slopes of Gissar range exceeded the norm, and in other mountain regions it was near to the norm. As a result of heavy and continued snowfall, avalanches were observed on 18 and 19 January in Varzob canyon, in Gushara area up to tunnel portal "Istiklol".

The forecasts were proved by 100%. No victims or destructions were registered.

In **February**, no mudflows were registered and forecasted.

Four avalanches were forecasted with total duration of 12 days. On 10, 11, 12, and 26-27 February avalanches were registered in Varzob river upstream, on southern slopes of Gissar range. No avalanches were registered in other areas.

The forecasts were proved by 100%. No victims or destructions were registered.

In **March**, temperature was below the norm, while amount of precipitation all over the republic exceeded the norm, including Zeravshan and Pamir rivers upstreams. As a result, number of avalanches increased. Great amount of precipitation was observed in the second and third decades of the month.

In total, 5 avalanches with total duration of 11 days were forecasted for March. Mudflows and avalanches were registered on southern slopes of Gissar range in the first half of March. In the beginning of second decade of the month, many avalanches were observed in the area of Lyahsh meteorological station. At the end of month, avalanches were registered in Varzob river upstream, on 55-62 km of Dushanbe - Khudjand road, on northern and southern parts of Istiklol tunnel, on Rushan - Horog Road (Pamir), and in the area of Sarez lake.

In March, one mudflow was forecasted (and was proved). Due to heavy rainfalls on Varzob river and southern slope of Gissar range, mudflows were observed. At the end of March, water discharge in Varzob river increased from 25 m/s to 200 m/s. Small mudflows washed out Dushanbe - Horog road in Tavildara region. No victims or destructions were registered.

Appendix 2

PRSP Indicators in the Republic of Tajikistan

Sector	Goals	Indicators	Indicators of SCS						
			1990 ⁰	1999	2003	2004	2005	2006 ¹	1 st quarter of 2007
Complete PRS	Increase real incomes in the country	GDP per capita (USD)	-	178,2	236,7	309,2	337,2	399,9	x
	Improved level of living of poorest strata of population	Employment rate among able-bodied population (%)	-	55,6	51,7	55,3	54,3
Macroeconomic management oriented to reaching economic growth required for increase of population incomes	Sequent macroeconomic management oriented to reaching economic growth required for increase of population incomes	Real GDP growth (%)	98,4*	103,7	110,2	110,6	106,7	107,0	105,3
		Inflation rate (%)	-	26,3	13,7	5,7	7,1	12,5	2,2
		Credits provided by bank sector (as percentage of GDP)	...	3,6	3,3	7,4	7,3	5,6	25,4
		Share of private sector in GDP (%)	-	29,3	39,1	39,8	41,5	42,7	x
		Direct foreign investment (in % to GDP)	x	0,2	1,7	1,1	2,4	13,7	x
		State revenues (in % to GDP)	46,8	18,6	17,3	17,9	18,1	17,9	29,4
		Public expenditures (in % to GDP)	43,4	17,6	16,2	17,7	19,6	17,5	20,4
		Public expenditures for health sector (in % to GDP)	4,8	1,0	0,9	0,9	1,1	1,1	1,4
		Public expenditures for education (in % to GDP)	10,4	2,1	2,41	2,7	3,5	3,4	4,3
		Public expenditures for social protection and insurance ³⁾ (in % to GDP)	-	0,2 ²⁾	2,3	2,6	3,3	3,2	4,0
		Public expenditures for environment protection (in % to GDP)	0,03	-	0,04	0,05	0,04	0,05	0,02
		Public expenditures for agriculture (in % to GDP)			0,5	0,5	0,5	0,5	1,1
		Public expenditures for irrigation (in % to GDP)			0,2	0,1	0,12	0,27	0,43
		Public expenditures for infrastructure (transport and communication) ⁴⁾ (in % to GDP)			1,2	1,4	1,1	0,9	1,6
		Average monthly salary in public sector as compared to private sector (%)		64,5	146,9	126,5	166,6	171,0	167,2
	Registered unemployment rate		3,0	2,4	2,0	2,0	2,3	2,3	

Sector	Goals	Indicators	Indicators of SCS							
			1990 ⁰	1999	2003	2004	2005	2006 ¹	1 st quarter of 2007	
		Population incomes, according to households' survey, per one household member (somoni)			35,38	44,42	55,48	75,86	...	
Reforms in public administration	Creation of effective judicial service	Average salary of judge (somoni)		20,9	50,34	54,36	91,16	158,52	...	
Social protection	Guaranteed incomes of poor populations, ensuring effectiveness of targeted assistance	Number of employed per one pensioner (persons)	2,2	3,10	3,53	3,59	3,84	
		Average monthly pension (somoni)	x	3,53	13,07	16,92	27,51	42,33	42,51	
		Number of pensioners receiving disability pension (thsd.persons)	48,0	67,8	78,2	79,1	84,1	86,9	89,7	
Education	Increase of literacy rate and level of general education of population	Coverage by primary education ratio [7-10 years old (1-4 forms)]	90,9	97,4	99,6	99,2	99,0	98,0	...	
		Coverage by basic education ratio [7-15 years old (1-9 forms)]	94,8	89,1	95,4	95,4	95,6	95,8	...	
		Coverage by secondary education ratio [16-17 years old (10-11 forms)]	x	35,7	42,0	46,1	46,4	47,6	...	
	Ensuring access to primary and secondary education	Number of pupils per 1 teacher								
		Schools	14	15,1	16,2	17	17	17	x...	
		institutions of higher education-specialised secondary educational establishment	12,8	13,4	16,0	11,0	17,4	17,3		
			11,5	11	11,1		13	11		
	Eliminate gender disparity in access to education	Proportion of boys and girls in primary school:	boys	51,2	52,6	52,0	51,8	52,0	51,9	x
			girls	48,8	47,4	48,0	48,2	48,0	48,1	
		in secondary school:	boys	49,8	59,6	60,5	60,7	61,1	61,1	
girls			50,2	40,4	39,5	39,3	38,9	38,9		

Sector	Goals	Indicators	Indicators of SCS						
			1990 ⁰	1999	2003	2004	2005	2006 ¹	1 st quarter of 2007
Health care	Improved quality of public health services and improved access of poor population to health services	Maternal mortality	42,9	44,2	37,7	39,0	33,1	43,4	x
		Infant mortality	40,4	12,9	10,9	11,5	11,7	...	x
		Mortality of children under 5 years old	61,0	20,8	17,0	16,5	16,4	...	x
		Share of births delivered with assistance of skilled medical personnel, %	-	66,6	71,4	75,1	76,2	78,3	x
		Percentage of children aged 1 year who received DPT vaccinations	86,8	98,7	96,3	96,0	94,5	96,4	x
		Number of HIV cases	-	-	119	317	506	626	x
		Number of tuberculosis cases per 100000 population	44,4	42,1	66,5	66,6	60,1	57,8	13,6
		Number of malaria cases per 100000 population	-	222,0	71,6	48,4	29,1	1,8	0,22
		Number of typhoid fever and paratyphoid ABC per 100000 population	48,0	122,0	48,9	38,5	29,4	20,5	3,4
		Number of measles cases per 100000 population	130,4	3	33	0,3	0	0,004	0,03
Agriculture and Irrigation	Ensure effective use of land and water, as well as fair access of poor population to land and water	Share of population engaged in agricultural sector, %	-	64,4	67,6	66,6	67,5	67,2	...
		Wages and salary in agricultural sector, somoni	-	5,38	27,00	35,63	38,39	42,99	36,02
Development of private sector	Create favorable conditions for private sector functioning	Receipt of funds from privatization by state budget, mln.somoni	-	17,7	21,7	35,9	43,5	...	
Infrastructure	Ensure access to steady and satisfactory infrastructure public services for the poorest stratum of population	Number of telephone lines per 100 residents	-	3,51	3,65	3,83	3,29	3,33	...
		Number of mobile (cell) phones per 100 residents	-	...	0,73	2,5	5,9	12,6	...
		Number of Internet users per 1000 inhabitants	-	...	0,2	0,3	0,6	0,7	...
		Share of population having continuous access to potable water (urban and rural)	-	44%	-	-	-	-	-

Sector	Goals	Indicators	Indicators of SCS						
			1990 ⁰	1999	2003	2004	2005	2006 ¹	1 st quarter of 2007
Environment and tourism	Eliminate serious environmental threats to population health and safety of ecosystem	CO ₂ emission per capita, and use of destroying chlorine and fluorine containing compounds (metric tons of ozone depleters)	-	0,007	0,002	0,001	0,001
	Promote establishing of positive image of the country as well as development of tourism	Number of tourists, of which foreigners	-	/-	/887	/401	/318	/572	/58

⁰ – reference year for MDG

¹ – preliminary data of SCS

² - social security

³ - social protection and social insurance

⁴ – data on energy are reflected in item on «данные по энергетике отражены в статье «Fuel and energy complex»

* - for 1992

APPENDIX 3. CHANGES IN AVERAGE WHOLESALE PRICES (SUPPLY) IN TAJIKISTAN (somoni / kg)

	I quarter			II quarter			III quarter			IV quarter		
	2005	2006	2007	2005	2006		2005	2006		2005	2006	
	Potatoes											
GBAO	-	-	-	0,30	-		0,30	-		0,40	-	
Soghd Oblast	0,12	0,25	0,50	0,13	0,23		0,10	0,30		0,31	0,54	
Khatlon Oblast	0,43	0,38	-	0,30	0,35		0,43	0,37		0,31	0,42	
RRS	0,30	0,64	1,05	0,29	0,70		0,37	0,50		0,40	0,42	
Average in the Republic	0,13	0,28	0,29	0,19	0,35		0,29	0,44		0,36	0,49	
	Milk											
GBAO	-	-	-	0,50	1,0		-	-		-	0,54	
Soghd Oblast	0,39	0,45	0,60	0,38	0,45		0,37	0,43		0,37	1,00	
Khatlon Oblast	0,17	0,24	0,50	0,19	0,27		0,21	0,30		0,23	0,45	
RRS	0,61	0,74	0,84	0,57	0,73		0,58	0,72		0,61	0,46	
Average in the Republic	0,42	0,51	0,67	0,41	0,52		0,41	0,51		0,41	0,54	
	Wheat											
GBAO	-	0,44	-	-	0,19		0,60	0,50		0,60	0,50	
Soghd Oblast	0,39	0,43	0,49	0,38	0,37		0,30	0,42		0,37	0,38	
Khatlon Oblast	0,62	0,54	0,57	0,29	0,33		0,28	0,33		0,30	0,37	
RRS	0,54	0,48	0,62	0,46	0,47		0,60	0,45		0,46	0,46	
Average in the Republic	0,42	0,44	0,45	0,34	0,35		0,31	0,39		0,36	0,39	

APPENDIX 4. CHANGES IN AVERAGE CONSUMER PRICES IN TAJIKISTAN IN 2005-2006 (somon / kg)

				I quarter			
	2004	2005	2006	2004	2005	2006	2007
	Potatoes						
Dushanbe	0,46	0,77	1,25	0,55	0,62	1,25	1,53
Soghd Oblast	0,28	0,53	1,13	0,32	0,32	1,29	1,29
Khatlon Oblast	0,43	0,74	1,23	0,58	0,62	1,25	1,57
Average in the Republic	0,39	0,68	1,20	0,48	0,52	1,26	1,46
	Milk						
Dushanbe	1,16	1,44	1,80	1,15	1,37	1,80	1,57
Soghd Oblast	0,48	0,60	0,71	0,45	0,60	0,71	0,97
Khatlon Oblast	0,53	0,53	0,75	0,50	0,52	0,68	0,93
Average in the Republic	0,72	0,86	1,09	0,70	0,83	1,06	1,17
	Flour of 1st grade						
Dushanbe	1,04	1,04	0,99	1,04	1,05	1,00	1,16
Soghd Oblast	0,91	0,92	0,93	0,90	0,95	0,90	1,08
Khatlon Oblast	1,06	1,04	0,97	1,09	1,05	0,99	1,16
Average in the Republic	1,00	1,00	0,96	1,01	1,02	0,96	1,13
	Wheat						
Dushanbe	0,64	0,74	0,78	0,60	0,65	0,75	0,87
Soghd Oblast	0,52	0,56	0,58	0,47	0,59	0,48	0,82
Khatlon Oblast	0,58	0,66	0,65	0,53	0,70	0,65	0,70
Average in the Republic	0,58	0,65	0,67	0,53	0,65	0,62	0,79
	Rice						
Dushanbe	1,55	2,24	2,87	1,39	1,67	2,57	3,13
Soghd Oblast	1,32	1,91	2,49	1,26	1,44	2,23	2,54
Khatlon Oblast	1,32	1,94	2,52	1,25	1,44	2,23	2,87
Average in the Republic	1,39	2,03	2,63	1,30	1,52	2,34	2,85
	Sugar						
Dushanbe	1,54	1,68	2,44	1,44	1,53	2,20	2,42
Soghd Oblast	1,57	1,67	2,41	1,41	1,54	2,18	2,42
Khatlon Oblast	1,60	1,67	2,39	1,47	1,53	2,18	2,39
Average in the Republic	1,57	1,68	2,42	1,44	1,54	2,19	2,41

				I quarter			
	2004	2005	2006	2004	2005	2006	2007
	Onion						
Dushanbe	0,44	0,49	0,74	0,58	0,64	0,72	1,03
Soghd Oblast	0,28	0,30	0,51	0,28	0,34	0,38	0,68
Khatlon Oblast	0,42	0,47	0,70	0,56	0,65	0,68	1,05
Average in the Republic	0,38	0,42	0,65	0,47	0,54	0,60	0,92
	Cotton oil						
Dushanbe	2,78	2,81	2,89	2,75	2,82	2,80	3,30
Soghd Oblast	2,88	2,75	2,75	2,79	2,82	2,55	3,39
Khatlon Oblast	2,55	2,61	2,67	2,52	2,60	2,56	3,04
Average in the Republic	2,74	2,71	2,77	2,69	2,74	2,64	3,24
	Mutton						
Dushanbe	8,35	8,40	10,17	8,30	8,25	9,00	12,33
Soghd Oblast	8,41	8,60	10,64	8,43	8,43	9,42	13,00
Khatlon Oblast	7,65	7,63	8,99	7,49	7,67	8,13	10,97
Average in the Republic	8,13	8,21	10,00	8,07	8,12	8,85	12,10
	Beef						
Dushanbe	7,00	7,63	9,44	7,00	7,00	8,50	11,17
Soghd Oblast	6,38	6,61	8,18	6,43	6,47	7,30	9,63
Khatlon Oblast	6,42	6,59	7,85	6,44	6,40	7,02	9,57
Average in the Republic	6,60	6,94	8,49	6,62	6,62	7,61	10,12
	Chicken meet						
Dushanbe	6,24	6,22	6,82	6,22	6,22	6,38	7,25
Soghd Oblast	5,13	5,89	6,77	5,50	5,64	6,22	7,11
Khatlon Oblast	6,39	6,33	6,86	6,37	6,33	6,59	7,04
Average in the Republic	5,92	6,15	6,80	6,03	6,06	6,33	7,13
	Eggs (10 pieces)						
Dushanbe	2,83	3,13	3,11	2,53	3,03	2,80	4,75
Soghd Oblast	2,41	2,72	2,99	2,23	2,82	2,88	4,05
Khatlon Oblast	2,74	3,04	2,95	2,66	3,00	2,65	4,65
Average in the Republic	2,66	2,97	3,04	2,47	2,95	2,87	4,48

APPENDIX 5. FOOD BALANCE OF THE REPUBLIC OF TAJIKISTAN for 2003-2006

	Basic foodstuffs (physical quantities)	Bread and bread products in grain, thousand tons				Potatoes fresh, thousand tons				Vegetables and melons fresh, thousand tons				Fruits and berries fresh, thousand tons				Sugar and confectionery, in sugar, thousand tons			
		2003	2004	2005	2006	2003	2004	2005	2006	2003	2004	2005	2006	2003	2004	2005	2006	2003	2004	2005	2006
1.	Stocks at the beginning of the period	223,2	215,7	121,8	423,9	87,8	234,9	264,7	403,8	15,9	95,0	21,6	192,2	32,3	13,0	3,3	2,5	10,4	47,4	20,6	81,9
2.	Food production in the country (+)	660,2	679,0	618,5	633,1	473,3	527,2	555,1	573,4	721,5	829,8	888,8	759,2	117,3	237,6	237,6	315,8	0,4	1,6	1,9	2,5
3.	Food imports (+)	353,3	276,8	725,5	675,5	0,9	0,6	0,5	11,5	0,3	2,4	39,7	1,2	0,3	4,8	5,6	9,8	95,8	109,1	123,2	140,9
	Availability (1-3) (+)	1236,7	1171,5	1465,8	1732,5	562,0	762,7	820,3	988,7	737,7	927,2	950,1	952,6	149,9	255,4	246,5	328,1	106,6	158,1	145,7	225,3
4.	Used for seed (-)	60,0	107,2	140	64	104,0	162,2	84,0	112,0	-	-	-	-	-	-	-	-	-	-	-	-
5.	Used as fodder (-)	-	-	4,0	4,0	-	-	-	98,8	-	-	-	95,0	-	-	-	13,0	-	-	-	-
6.	Losses (-)	12,0	12,1	5,0	6,0	25,0	30,0	31,0	30,0	78,0	100,0	1,7	95,0	7,0	9,1	1,2	4,9	-	-	-	-
7.	Food exports (-)	0,3	-	0,3	0,1	0,3	0,3	0,3	0,01	44,2	90,6	37,5	31,2	55,1	57,9	37,6	29,5	-	-	0,028	-
8.	Availability for consumption by the population (-)	908,7	927	891,4	1007,5	197,8	304,5	300,0	325,0	520,5	715,0	717,8	720,0	74,8	172,4	205,2	268,8	59,2	109,6	59,8	77,0
9.	Other utilization (-)	40,0	3,4	1,2	2,0	-	1,0	1,2	1,5	-	-	0,9	1,0	-	12,7	-	9,0	-	27,9	4,0	30,0
	Consumption (4-9) (-)	1021	1049,7	1041,9	1083,6	327,1	498,0	416,5	567,3	642,7	905,6	757,9	942,2	136,9	252,1	244,0	325,2	59,2	137,5	63,8	107,0
10	Stocks at the end of the period	215,7	121,8	423,9	648,9	234,9	264,7	403,8	421,4	95,0	21,6	192,2	10,4	13,0	3,3	2,5	2,9	47,4	20,6	81,9	118,3

	Basic foodstuffs (physical quantities)	Meat and meat products in carcass weight, thousand tons				Milk and dairy products, in milk, thousand tons				Eggs, million				Vegetable oil, thousand tons				Fish and fish products, tons			
		2003	2004	2005	2006	2003	2004	2005	2006	2003	2004	2005	2006	2003	2004	2005	2006	2003	2004	2005	2006
1.	Stocks at the beginning of the period	0,2	8,7	0,6	3,3	1,9	0,6	0,6	0,9	1,0	3,3	1,0	1,2	0,7	0,9	5,0	10,4	11,0	11,0	6,7	4,9
2.	Food production in the country (+)	49,1	48,2	53,5	111,7	459,1	489,5	533,0	544,8	57,1	77,7	98,7	104,7	36,0	28,2	22,9	23,0	234	146,7	178,5	172,1
3.	Food imports (+)	3,6	6,2	12,4	14,9	0,8	1,6	12,4	2,8	43,2	48,0	78,4	160,0	1,2	36,1	56,0	42,4	200	173	269,0	184,4
	Availability (1-3) (+)	52,9	63,1	66,5	129,9	461,8	491,7	546,0	548,5	101,3	129,0	178,1	265,9	37,9	65,2	83,9	75,8	445	330,7	454,2	361,4
4.	Used for seed (-)	-	-	-	-	-	-	-	-	-	-	-	-	-	-	-	-	-	-	-	-
5.	Used as fodder (-)	-	-	-	-	-	-	-	-	-	-	-	-	-	-	-	-	-	-	-	-
6.	Losses (-)	-	-	-	-	-	-	-	-	-	-	-	0,5	-	-	-	-	-	-	-	-
7.	Food exports (-)	-	-	-	0,0	-	0,1	-	0,0	-	-	-	-	-	-	0,2	0,0	-	-	-	0,0
8.	Availability for consumption by the population (-)	44,2	62,5	63,2	123,9	461,2	489,0	543,5	545,6	98,0	127,2	176,5	260,0	37,0	60,2	69,8	66,8	434	324,0	449,3	360,4
9.	Other utilization (-)	-	-	-	2,0	-	2,0	1,6	2,0	-	0,8	0,4	0,4	-	-	3,5	4,0	-	-	-	-
	Consumption (4-9) (-)	44,2	62,5	63,2	125,3	461,2	491,1	545,1	547,6	98,0	128,0	176,9	264,4	37,0	60,2	73,5	70,8	434	324,0	449,3	360,4
10.	Stocks at the end of the period	8,7	0,6	3,3	4,0	0,6	0,6	0,9	0,9	3,3	1,0	1,2	1,5	0,9	5,0	10,4	5,0	11,0	6,7	4,9	1,0

FOOD BALANCE OF THE REPUBLIC OF TAJIKISTAN for 2005, by quarters

	Basic foodstuffs (physical quantities)	Bread and bread products in grain, thousand tons				Potatoes fresh, thousand tons				Vegetables and melons fresh, thousand tons				Fruits and berries fresh, thousand tons				Sugar and confectionery, in sugar, thousand tons			
		I q.	II q.	III q.	IV q.	I q.	II q.	III q.	IV q.	I q.	II q.	III q.	IV q.	I q.	II q.	III q.	IV q.	I q.	II q.	III q.	IV q.
1.	Stocks at the beginning of the period	121,8	65,4	271,1	638,7	264,7	101,2	137,9	293,3	21,6	2,0	6,0	248,0	3,3	0,8	0,8	53,7	20,6	13,5	37,2	67,8
2.	Food production in the country (+)	-	174	439,0	192,0	-	73,9	236,6	244,6	0,4	89,6	516,5	282,3	-	14,6	115,0	109,4	0,4	0,8	0,7	-
3.	Food imports (+)	100,5	257,7	154,9	222,4	-	0,2	-	0,3	0,2	0,7	-	38,8	1,9	-	0,5	3,2	18,5	33,1	42,9	28,7
	Availability (1-3) (+)	222,3	497,1	865,0	1053,1	264,7	175,3	374,5	538,2	22,2	92,3	522,5	569,1	5,2	15,4	116,3	166,3	39,5	47,4	80,8	96,5
4.	Used for seed (-)	80,0	-	-	60	80,0	-	-	4,0	-	-	-	-	-	-	-	-	-	-	-	-
5.	Used as fodder (-)	-	-	-	-	-	-	-	-	-	-	-	-	-	-	-	-	-	-	-	-
6.	Losses (-)	-	-	-	5,0	7,0	-	1,0	23,0	1,7	-	-	-	0,1	0,1	-	1,0	-	-	-	-
7.	Food exports (-)	0,2	0,1	-	-	0,2	-	-	0,1	2,7	3,0	31,8	-	-	-	37,6	-	-	0,028	-	-
8.	Availability for consumption by the population (-)	76,4	225,6	226,0	363,4	76,0	37,1	79,9	107,0	15,8	83,3	242,7	376,0	4,3	14,5	25,0	161,4	25,0	9,2	12,0	13,6
9.	Other utilization (-)	0,3	0,3	0,3	0,3	0,3	0,3	0,3	0,3	-	-	-	0,9	-	-	-	-	1,0	1,0	1,0	1,0
	Consumption (4-9) (-)	156,9	226,0	226,3	428,7	163,5	37,4	81,2	134,4	20,2	86,3	274,5	376,9	4,4	14,6	62,6	162,4	26,0	10,2	13,0	14,6
10.	Stocks at the end of the period	65,4	271,1	638,7	624,4	101,2	137,9	293,3	403,8	2,0	6,0	248,0	192,2	0,8	0,8	53,7	3,9	13,5	37,2	67,8	81,9

	Basic foodstuffs (physical quantities)	Meat and meat products in carcass weight, thousand tons				Milk and dairy products, in milk, thousand tons				Eggs, million				Vegetable oil, thousand tons				Fish and fish products, tons			
		I q.	II q.	III q.	IV q.	I q.	II q.	III q.	IV q.	I q.	II q.	III q.	IV q.	I q.	II q.	III q.	IV q.	I q.	II q.	III q.	IV q.
1.	Stocks at the beginning of the period	0,6	0,5	0,6	1,5	0,6	0,6	0,6	0,8	1,0	0,5	0,5	0,3	5,0	1,0	1,0	2,4	6,7	0,7	0,5	3,7
2.	Food production in the country (+)	9,6	9,3	14,6	20,0	99,2	119,3	141,6	172,9	22,2	24,3	26,6	25,6	8,0	2,8	5,0	7,1	-	82	42,4	54,1
3.	Food imports (+)	3,3	2,0	2,3	4,8	0,3	2,4	-	9,7	17,8	11,4	15,3	33,9	8,2	12,7	12,6	22,5	81	14	82,8	91,2
	Availability (1-3) (+)	13,5	11,8	17,5	26,3	100,1	122,3	142,2	183,4	41,0	36,2	42,4	59,8	21,2	16,5	18,6	32,0	87,7	96,7	125,7	149,0
4.	Used for seed (-)	-	-	-	-	-	-	-	-	-	-	-	-	-	-	-	-	-	-	-	-
5.	Used as fodder (-)	-	-	-	-	-	-	-	-	-	-	-	-	-	-	-	-	-	-	-	-
6.	Losses (-)	-	-	-	-	-	-	-	-	-	-	-	-	-	-	-	-	-	-	-	-
7.	Food exports (-)	-	-	-	-	-	-	-	-	-	-	-	-	-	-	0,2	-	-	-	-	-
8.	Availability for consumption by the population (-)	13,0	11,2	16,0	23,0	99,0	121,4	141,0	182,1	40,4	35,6	42,0	58,9	16,7	15,5	16,0	21,6	87,0	96,2	122,0	144,1
9.	Other utilization (-)	-	-	-	-	0,5	0,3	0,4	0,4	0,1	0,1	0,1	0,1	0,1	3,5	-	-	-	-	-	-
	Consumption (4-9) (-)	13,0	11,2	16,0	23,0	99,5	121,7	141,4	182,5	40,5	35,7	42,1	58,6	20,2	15,5	16,2	21,6	87,0	96,2	122,0	144,1
10.	Stocks at the end of the period	0,5	0,6	1,5	3,3	0,6	0,6	0,8	0,9	0,5	0,5	0,3	1,2	1,0	1,0	2,4	10,4	0,7	0,5	3,7	4,9

FOOD BALANCE OF THE REPUBLIC OF TAJIKISTAN for 2006, by quarters

	Basic foodstuffs (physical quantities)	Bread and bread products in grain, thousand tons				Potatoes fresh, thousand tons				Vegetables and melons fresh, thousand tons				Fruits and berries fresh, thousand tons				Sugar and confectionery, in sugar, thousand tons			
		I q.	II q.	III q.	IV q.	I q.	II q.	III q.	IV q.	I q.	II q.	III q.	IV q.	I q.	II q.	III q.	IV q.	I q.	II q.	III q.	IV q.
1.	Stocks at the beginning of the period	421,9	320,5	361,7	581,7	403,8	327,2	243,5	421,8	192,2	52,5	3,3	154,5	2,5	-	0,6	39,8	81,9	90,8	89	43,1
2.	Food production in the country (+)	-	220,3	412,8	-	-	85,4	228,9	259,1	0,5	121,1	382,4	255,2	-	24,7	154,3	136,8	-	1,2	-	1,3
3.	Food imports (+)	229,2	14,4	82,5	349,4	-	7,3	0,5	3,7	0,1	0,8	0,1	0,2	5,0	1,1	0,8	2,9	22,9	18,5	10,1	89,4
	Availability (1-3) (+)	653,1	555,2	857,0	931,1	403,8	419,9	472,9	684,6	192,8	174,4	385,8	409,9	7,5	25,8	155,7	179,5	104,8	110,5	99,1	133,8
4.	Used for seed (-)	81,0	-	-	162,0	-	111,7	-	0,3	-	-	-	-	-	-	-	-	-	-	-	-
5.	Used as fodder (-)	-	-	-	4,0	-	-	-	98,8	-	-	-	95	-	-	-	13,0	-	-	-	-
6.	Losses (-)	-	-	-	6,0	24,0	12,0	16	-	11,6	-	15	68,4	-	-	-	4,9	-	-	-	-
7.	Food exports (-)	-	-	0,1	-	-	0,005	65,1	-	-	7,7	23,1	0,4	-	21,9	6,7	0,9	-	0,003	0,001	-
8.	Availability for consumption by the population (-)	251,6	193,0	274,9	288,0	52,6	93,6	-	162,6	128,7	163,4	111,6	235,7	7,5	3,3	106,2	157,8	13,6	50,0	17,5	5,9
9.	Other utilization (-)	-	0,5	0,3	1,2	-	-	-	1,5	-	-	-	-	7,5	-	3,0	-	0,4	-	20	9,6
	Consumption (4-9) (-)	332,6	193,5	275,3	461,2	76,6	176,4	51,1	263,2	140,3	171,1	231,3	399,5	-	25,2	115,9	176,6	14,0	50,0	56,0	15,5
10.	Stocks at the end of the period	320,5	361,7	581,7	469,9	327,2	243,5	421,8	421,4	52,5	3,3	154,5	10,4	-	0,6	39,8	2,9	90,8	60,5	43,1	118,3

	Basic foodstuffs (physical quantities)	Meat and meat products in carcass weight, thousand tons				Milk and dairy products, in milk, thousand tons				Eggs, million				Vegetable oil, thousand tons				Fish and fish products, tons			
		I q.	II q.	III q.	IV q.	I q.	II q.	III q.	IV q.	I q.	II q.	III q.	IV q.	I q.	II q.	III q.	IV q.	I q.	II q.	III q.	IV q.
1.	Stocks at the beginning of the period	3,3	5,1	15,3	15,9	0,9	24,0	36	24,7	1,2	28,9	9,2	0,7	10,4	8,4	3,8	-3,8	4,9	-	-	-
2.	Food production in the country (+)	15,4	24,1	14,9	57,3	101,5	124,6	148,3	170,4	24,1	25,1	29,5	26	8,0	2,8	0,7	11,5	-	0,1	0,1	171,9
3.	Food imports (+)	-	10,7	3,4	0,8	0,6	0,5	0,6	1,1	36,8	-	-	123,2	9,5	12,4	10,9	9,6	-	68	36,7	79,7
	Availability (1-3) (+)	18,7	39,9	33,6	74	103,0	149,1	152,5	196,2	62,1	54	38,7	149,9	27,9	23,6	15,4	17,3	4,9	68,1	36,8	251,6
4.	Used for seed (-)																				
5.	Used as fodder (-)																				
6.	Losses (-)											0,5									
7.	Food exports (-)	-	0,085			-	0,016			-	-			-	0,003	0,01		-	-		
8.	Availability for consumption by the population (-)	13,6	24,5	16,7	69	78,0	112,1	125,2	195,3	33,2	44,8	38,0	147,5	19,5	19,8	9,2	8,3	4,9	68,1	36,8	250,6
9.	Other utilization (-)			1,0	1	1,0	1,0	2					0,4				4				
	Consumption (4-9) (-)	13,6	24,6	17,7	70	79,0	113,1	127,8	195,3	33,2	44,8	38	148,4	19,5	19,8	19,2	12,3	4,9	68,1	36,8	250,6
10.	Stocks at the end of the period	5,1	15,3	15,9	4,0	24,0	36,0	24,7	0,9	28,9	9,2	0,7	1,5	8,4	3,8	-3,8	5,0	-	-	-	1,0

FOOD BALANCE OF THE REPUBLIC OF TAJIKISTAN for 2007, by quarters

	Basic foodstuffs (physical quantities)	Bread and bread products in grain, thousand tons		Potatoes fresh, thousand tons		Vegetables and melons fresh, thousand tons		Fruits and berries fresh, thousand tons		Sugar and confectionery, in sugar, thousand tons	
		I q.		I q.		I q.		I q.		I q.	
1.	Stocks at the beginning of the period	469,9		421,4		10,4		2,9		118,3	
2.	Food production in the country (+)	-		-		0,6		-		-	
3.	Food imports (+)	2,7		13,9		0,1		2,2		28,2	
	Availability (1-3) (+)	472,6		435,3		11,3		5,1		146,5	
4.	Used for seed (-)										
5.	Used as fodder (-)										
6.	Losses (-)										
7.	Food exports (-)	-		-		10,0		2,2		-	
8.	Availability for consumption by the population (-)	270,9		56,6		1,3		2,8		14,6	
9.	Other utilization (-)										
	Consumption (4-9) (-)										
10.	Stocks at the end of the period	201,7		378,7		0,0		0,1		131,9	

	Basic foodstuffs (physical quantities)	Meat and meat products in carcass weight, thousand tons		Milk and dairy products, in milk, thousand tons		Eggs, million		Vegetable oil, thousand tons		Fish and fish products, tons	
		I q.		I q.		I q.		I q.		I q.	
1.	Stocks at the beginning of the period	4,0		0,9		1,5		5,0		1,0	
2.	Food production in the country (+)	16,2		104,3		26,6		-		-	
3.	Food imports (+)	1,2		0,6		1,0		1,5		0,1	
	Availability (1-3) (+)	21,4		105,8		29,1		6,5		1,1	
4.	Used for seed (-)										
5.	Used as fodder (-)										
6.	Losses (-)										
7.	Food exports (-)	-		-							
8.	Availability for consumption by the population (-)	14,6		84,0		25,1		6,0		1,1	
9.	Other utilization (-)										
	Consumption (4-9) (-)										
10.	Stocks at the end of the period	6,8		21,8		4,0		0,5		0,0	

**APPENDIX 6. MONEY INCOMES, EXPENDITURES AND CONSUMPTION OF HOUSEHOLDS, IN THE REPUBLIC OF TAJIKISTAN,
BY DECILE POPULATION GROUPS (according to sampling household budget survey)**

	All households				of which:							
	the poorest 10% of population		the richest 10% of population		Urban				Rural			
	2005	2006	2005	2006	2005	2006	2005	2006	2005	2006	2005	2006
Money incomes , somoni	11,54	19,54	108,30	180,79	20,95	35,18	168,88	220,29	9,68	13,60	83,77	165,71
of which:												
labor incomes	8,19	14,77	52,32	64,65	17,78	28,40	102,34	139,81	6,46	9,59	27,92	36,47
social payments (pension, scholarships, benefits and other payments)	1,10	2,12	2,82	4,33	1,12	3,40	4,67	9,45	1,04	1,63	1,66	2,39
receipts from sales of agricultural products, feeds, livestock, etc.	1,14	0,44	18,00	24,22			2,14	0,68	1,32	0,61	26,64	33,03
Expenditures , somoni	17,94	28,79	118,28	160,50	24,39	40,54	171,22	215,73	16,76	24,32	96,60	139,54
of which:												
consumer expenditures	16,98	27,13	86,00	136,87	23,71	38,96	108,62	188,02	15,74	22,64	75,33	117,48
purchase of foods, including public catering	12,68	19,41	40,92	53,68	19,89	29,28	58,25	85,45	11,30	15,66	33,12	41,68
purchase of nonfoods for personal consumption	2,52	4,34	30,57	60,42	1,70	4,85	31,63	67,35	2,74	4,14	26,69	57,73
services	1,75	3,35	13,58	22,20	2,10	4,81	18,02	34,79	1,68	2,79	11,50	17,44
purchase of alcoholic beverages	0,03	0,04	0,93	0,57	0,01	0,01	0,78	0,43	0,03	0,05	1,02	0,62
Consumption of main foodstuffs, per 1 household member, kg												
Bread and bread products	11,37	10,57	14,96	15,50	7,81	8,76	11,23	12,20	12,25	10,99	17,00	16,71
Potatoes	1,94	1,91	3,42	2,96	1,74	1,72	3,55	3,64	2,04	1,94	3,38	2,71
Vegetables and melons	4,26	4,86	10,22	9,84	3,37	5,71	9,78	9,67	4,54	4,43	10,51	9,90
Fruits and berries, including dry	0,53	0,50	1,27	1,44	0,37	0,77	1,45	2,28	0,59	0,39	1,16	1,14
Meat and meat products	0,38	0,34	1,30	1,31	0,28	0,41	1,54	1,95	0,32	0,31	1,16	1,08
Milk and dairy products	2,74	2,39	6,62	7,61	1,33	1,91	3,93	8,46	3,03	2,51	7,04	7,30
Fish and fish products			0,01	0,02			0,05	0,07				
Eggs (pieces)	2	2	4	3	1	2	4	4	2	2	4	3
Sugar and confectionery	0,63	0,59	1,08	1,18	0,53	0,68	1,27	1,55	0,66	0,54	1,02	1,05
Vegetable oil and other fats	0,69	0,76	1,24	1,32	0,65	0,91	1,31	1,31	0,77	0,69	1,23	1,33

**APPENDIX 7. DISTRIBUTION OF HOUSEHOLDS AND POPULATION IN THEM BY PER CAPITA INCOME
IN THE REPUBLIC OF TAJIKISTAN IN JANUARY - SEPTEMBER OF 2005-2006** (according to sampling household budget surveys, in %)

	Distribution by money income in 2005			
	Total income		Disposable income	
	Number of households surveyed	Population in them	Number of households surveyed	Population in them
Total number	925	5439	925	5439
Including those with monthly per capita income (somon):				
below 10,00	8,3	8,9	8,5	9,1
10,01-15,00	6,7	7,9	6,8	7,9
15,01-20,00	8,2	9,5	8,5	9,8
20,01-25,00	9,4	10,9	9,5	10,9
25,01-30,00	9,2	9,9	9,7	10,3
30,01-35,00	8,4	8,9	8,5	8,9
35,01-40,00	8,2	8,3	8,2	8,3
40,01-45,00	6,2	6,1	6,6	6,5
45,01-50,00	5,9	5,5	5,6	5,2
50,01-55,00	4,2	4,1	4,2	4,0
55,01-60,00	3,5	3,0	3,7	3,1
60,01-65,00	3,1	2,7	2,9	2,5
65,01-70,00	2,4	2,0	2,0	1,8
70,01-75,00	2,0	1,6	2,3	1,6
75,01-80,00	1,9	1,4	1,7	1,3
80,01-85,00	1,4	1,2	1,3	1,1
85,01-90,00	1,4	0,9	1,0	0,8
90,01-95,00	0,8	0,6	0,7	0,6
95,01 and more	8,8	6,6	8,3	6,3

	Distribution by money income in 2006			
	Total income		Disposable income	
	Number of households surveyed	Population in them	Number of households surveyed	Population in them
Total number	925	5393	925	5393
Including those with monthly per capita income (somon):				
below 15,00	9,4	10,5	9,6	10,7
15,01-20,00	5,6	6,6	5,7	6,8
20,01-25,00	5,3	6,3	5,5	6,5
25,01-30,00	6,9	8,2	7,0	8,4
30,01-35,00	6,0	7,1	6,0	7,1
35,01-40,00	6,5	7,1	6,8	7,6
40,01-45,00	6,2	6,8	6,6	7,1
45,01-50,00	6,2	6,3	6,1	6,2
50,01-55,00	4,9	4,9	4,9	4,9
55,01-60,00	5,0	4,9	5,0	4,9
60,01-65,00	4,0	3,7	3,9	3,6
65,01-70,00	3,4	3,2	3,4	3,1
70,01-75,00	3,2	2,9	3,0	2,7
75,01-80,00	2,7	2,5	2,7	2,4
80,01-85,00	2,4	2,2	2,3	1,9
85,01-90,00	2,2	1,8	2,2	1,8
90,01-95,00	1,5	1,2	1,4	1,1
95,01-100,00	1,8	1,5	1,8	1,4
100,01 and more	16,8	12,3	16,1	11,8

APPENDIX 8. STRUCTURE OF AVERAGE MONTHLY EXPENDITURES OF POPULATION IN THE REPUBLIC OF TAJIKISTAN
(according to sampling household budget survey)

	2005						2006					
	Per 1 household member, somoni / month	of which:		Per 1 household member, in %	of which:		Per 1 household member, somoni / month	of which:		Per 1 household member, in %	of which:	
		Urban area	Rural area		Urban area	Rural area		Urban area	Rural area		Urban area	Rural area
Money expenditures	43,43	57,29	38,15	100,00	100,00	100,00	60,97	86,35	51,55	100,00	100,00	100,00
of which:												
Consumer expenditures	37,52	48,42	33,37	86,4	84,5	87,5	55,09	79,04	46,26	90,4	91,5	89,7
including:												
on foods	23,90	32,82	20,50	63,7	67,8	61,4	31,83	46,70	26,35	57,8	59,1	57,0
on nonfoods	9,01	9,54	8,80	24,0	19,7	26,4	15,66	20,24	13,98	28,4	25,6	30,2
including:												
clothes, footwear, fabrics	4,02	4,86	3,70	44,6	50,9	42,0	5,90	8,63	4,90	37,7	42,6	35,1
furniture and cultural and household appliances	1,05	1,12	1,03	11,7	11,7	11,7	2,25	4,60	1,39	14,4	22,7	9,9
medicines	0,53	0,61	0,51	5,9	6,4	5,8	0,95	1,27	0,84	6,1	6,3	6,0
building materials	1,16	0,27	1,49	12,9	2,8	16,9	2,43	1,66	2,72	15,5	8,2	19,5
fuel	0,17	0,08	0,20	1,9	0,8	2,3	0,27	0,16	0,31	1,7	0,8	2,2
tobacco goods, makhorka	0,18	0,10	0,19	2,0	1,0	2,2	0,22	0,21	0,22	1,4	1,0	1,6
alcoholic beverages	0,16	0,11	0,19	0,4	0,2	0,6	0,16	0,12	0,17	0,3	0,2	0,4
services	4,45	5,95	3,88	11,9	12,3	11,6	7,44	11,98	5,76	13,5	15,2	12,5
of which:												

	2005						2006					
	Per 1 house-hold member, somoni / month	of which:		Per 1 house-hold member, in %	of which:		Per 1 house-hold member, somoni / month	of which:		Per 1 house-hold member, in %	of which:	
		Urban area	Rural area		Urban area	Rural area		Urban area	Rural area		Urban area	Rural area
housing and communal services	1,29	1,81	1,08	29,0	30,4	27,8	1,87	3,45	1,28	25,1	28,8	22,2
including payments for :												
dwelling space	0,06	0,10	0,05	4,7	5,5	4,6	0,10	0,23	0,05	5,3	6,7	3,9
communal services	1,23	1,71	1,03	95,3	94,5	95,4	1,77	3,22	1,23	94,7	93,3	96,1
o/w electric energy	0,56	0,57	0,56	45,5	33,3	54,4	0,80	1,25	0,63	45,2	38,8	51,2
personal services	0,30	0,35	0,30	6,7	5,9	7,7	0,58	0,75	0,52	7,8	6,3	9,0
o/w repair and individual manufacture of clothes and footwear	0,06	0,09	0,05	20,0	25,7	16,7	0,09	0,18	0,06	15,5	24,0	11,5
cultural and educational services	0,10	0,04	0,12	2,2	0,7	3,1	0,14	0,17	0,12	1,9	1,4	2,1
payments for education	0,26	0,59	0,13	5,8	9,9	3,4	0,50	0,93	0,34	6,7	7,8	5,9
payments for medical services	0,18	0,21	0,13	4,0	3,5	3,4	0,40	0,78	0,25	5,4	6,5	4,3
payments for treatment in sanatoria and health resorts, including rest	0,01	0,02		0,2	0,3	0,0	0,02	0,04	0,01	0,3	0,3	0,2
transport services	2,12	2,47	1,99	47,6	41,5	51,3	3,43	4,46	3,05	46,1	37,2	53,0
communication services	0,09	0,21	0,05	2,0	3,5	1,3	0,35	1,00	0,11	4,7	8,3	1,9
legal services	0,03	0,03	0,03	0,7	0,5	0,8	0,04	0,01	0,04	0,5	0,1	0,7
Taxes, due, and other payments	0,95	2,78	0,26	2,2	4,9	0,7	1,29	3,60	0,44	2,1	4,2	0,9
Other expenditures	4,96	6,09	4,52	11,4	10,6	11,8	4,59	3,71	4,85	7,5	4,3	9,4

Continued

DISTRIBUTION OF HOUSEHOLDS AND POPULATION IN THEM BY PER CAPITA CONSUMER EXPENDITURES in 2005
(according to sampling household budget survey), in %

	Number of households surveyed	Population in them	Households consisting of:					Households having children below 16	of which households having			
			1 person	2 persons	3 person	4 persons	5 and more persons		1 child	2 children	3 children	4 and more children
Total number	925	5439	24	43	69	137	652	779	164	216	197	202

of which those with monthly per capita expenditures (somon) :

below 10,00	0,65	0,83			1,45		0,77	0,77	0,61		2,03	0,50
10,01-15,00	3,45	4,71					4,92	4,10	1,22	3,24	3,05	8,42
15,01-20,00	9,05	10,90			2,90	5,11	11,52	10,40	6,71	9,72	8,63	15,84
20,01-25,00	11,31	14,03	8,33	4,65	2,90	2,19	14,75	12,58	4,88	10,19	12,18	21,78
25,01-30,00	12,50	13,94	12,50		7,25	5,84	15,36	13,74	8,54	8,33	16,24	21,29
30,01-35,00	11,10	11,63	12,50	4,65	8,70	8,03	12,44	10,78	7,32	9,72	13,70	11,88
35,01-40,00	11,75	11,30		16,28	8,70	12,40	12,13	12,07	12,80	11,11	17,26	7,43
40,01-45,00	10,13	9,23	8,33	13,95	11,59	11,68	9,37	10,40	14,02	12,50	10,15	5,44
45,01-50,00	6,03	5,15	8,33	11,63	8,70	7,30	5,06	5,65	9,75	6,94	5,07	1,48
50,01-55,00	5,28	4,44		9,30	10,14	8,76	3,84	4,75	7,31	7,87	2,54	1,48
55,01-60,00	2,37	2,26		2,33	2,90	4,38	2,00	2,57	3,05	4,63	1,52	0,99
60,01-65,00	3,23	2,53	4,17	6,98	2,90	6,57	2,15	2,95	6,10	2,78	2,03	1,48
65,01-70,00	3,34	2,53	12,50	4,65	5,79	6,57	2,00	2,57	4,88	4,17	1,02	0,50
70,01-75,00	2,59	2,02	4,17	6,98	5,79	2,92	1,84	2,18	4,88	2,32	1,02	0,99
75,01-80,00	0,97	0,68	4,17	4,65	1,45	0,73	0,62	0,13	0,61			
80,01-85,00	0,97	0,55	4,17	4,65	1,45	2,92	0,15	0,64	1,22	0,93		0,50
85,01-90,00	0,32	0,26				1,46	0,15	0,26	0,61	0,46		
90,01-95,00	0,97	0,66	8,33			3,65	0,31	0,51	0,61	0,46	1,02	
95,01 and more	3,99	2,35	12,50	9,30	17,39	9,49	0,62	2,95	4,88	4,63	2,54	

Continued

DISTRIBUTION OF HOUSEHOLDS AND POPULATION IN THEM BY PER CAPITA CONSUMER EXPENDITURES in 2006

(according to sampling household budget survey), in %

	Number of households surveyed	Population in them	Households consisting of:					Households having children below 16	of which households having			
			1 person	2 persons	3 person	4 persons	5 and more persons		1 child	2 children	3 children	4 and more children
Total number	925	5393	22	49	69	131	654	783		220	186	207

of which those with monthly per capita expenditures (somoni) :

below 10,00	1,51	2,05					2,14	1,79	0,59	0,91	1,07	4,35
10,01-15,00	2,38	3,16				0,77	3,21	2,81	3,53	2,27	2,69	2,90
15,01-20,00	6,16	7,52	4,55		2,90	3,05	7,65	7,15	4,71	5,00	5,38	13,04
20,01-25,00	8,00	10,09	9,09	2,04	2,90	2,29	10,09	8,56	5,88	4,09	8,60	15,46
25,01-30,00	7,46	9,58	4,55		2,90	3,82	9,33	8,43	4,71	7,27	6,99	14,00
30,01-35,00	7,57	8,26	4,55	6,12	1,45	2,29	9,48	8,30	5,88	6,36	11,83	9,18
35,01-40,00	8,43	9,72		6,12		3,05	10,86	9,32	5,88	9,55	11,83	9,66
40,01-45,00	8,43	8,85	4,54	2,04	2,90	5,34	10,24	9,45	12,35	7,27	9,68	9,18
45,01-50,00	6,27	6,23		4,08	2,90	8,40	6,58	7,15	6,47	8,18	8,60	5,31
50,01-55,00	6,92	6,28		4,08	7,25	9,92	6,73	6,39	6,47	9,55	5,91	3,38
55,01-60,00	4,76	4,07	4,54	8,17	2,89	5,34	4,59	4,98	7,65	4,55	4,84	3,38
60,01-65,00	4,32	3,60	4,54	8,17	4,35	7,63	3,36	3,58	4,12	5,45	3,23	1,45
65,01-70,00	2,49	2,46			4,35	3,05	2,45	2,17	3,53	1,37	2,15	1,92
70,01-75,00	2,59	2,44			1,45	6,11	2,29	2,43	4,12	1,37	3,22	1,45
75,01-80,00	1,73	1,37	4,55	2,04	1,45	3,82	1,22	1,66	1,76	3,18	0,54	0,97
80,01-85,00	1,84	1,07	9,09	10,20	2,89	3,05	0,61	0,89	1,76	0,45	1,07	0,49
85,01-90,00	2,49	1,81	18,18	6,12		3,82	1,68	2,17	0,59	4,09	2,69	0,97
90,01-95,00	1,84	1,22	13,64		8,70	1,53	0,92	1,28	0,59	3,18	0,54	0,49
95,01 and more	14,81	10,22	18,18	40,82	50,72	26,72	6,57	11,49	19,41	15,91	9,14	2,42

APPENDIX 9. PER CAPITA CONSUMPTION OF FOOD IN THE REPUBLIC OF TAJIKISTAN
(according to sampling household budget surveys)

(per month, kg)

	<i>2005</i>			<i>2006</i>		
	Total	of which:		Total	of which:	
		Urban area	Rural area		Urban area	Rural area
Bread products	12,91	10,37	13,89	13,25	10,68	14,20
Potatoes	2,68	2,54	2,73	2,76	2,61	2,82
Vegetables and melons	6,62	5,55	7,03	6,28	5,61	6,53
Fruits and berries, including dry	3,20	1,64	3,80	4,03	2,82	4,48
Sugar and confectionary	0,92	0,97	0,90	1,01	1,19	0,94
Meat and meat products	0,67	0,82	0,64	0,85	1,08	0,76
Fish products	0,01	0,02	0,01	0,01	0,03	
Milk and dairy products	4,02	3,06	4,39	4,90	4,69	4,98
Eggs (pieces)	2	2	2	2	3	2
Vegetable oil and margarine	1,03	1,00	1,04	1,09	1,12	1,08

**FOOD SECURITY AND POVERTY
INFORMATION BULLETIN
OF THE REPUBLIC OF TAJIKISTAN**

/ Edited by Shabozov M.Sh. - Chairman
of the State Committee on Statistics
of the Republic of Tajikistan
734025 Tajikistan, Dushanbe, Bokhtar Street, 17 /

Editorial board:

Shabozov M.Sh. - Chairman of Editorial Board

Mukhammadieva B.Z., Asoev A.A., Ashurov I.S., Baimatov K.F., Gukasova T.P.,
Abdulloev M.A., Jdanova L.V., Ziaeva M.A., Kislitsina E.A., Turaev B.T.

Responsible for:

- sections of the Bulletin

Vital and Employment Statistics	Kislitsina E.A.	227-80-88
Social Statistics	Budnikova E.V.	227-94-88
Prices, Household Budgets and Poverty Statistics	Turaev B.T.	227-56-28
Finances	Pulatova N.T.	227-98-71
Gross Domestic Product	Ziaeva M.A.	227-98-71
Trade, External Activity	Jdanova L.V.	223-32-48
Agriculture	Abdulloev M.A.	227-81-14
Nature and Environment Statistics	Norov K.	227-82-66

-preparation of main document, systematization of
parts, and design:

Economic Analysis and International
Relations Department

Gukasova T.P.

Tel. 221-23-87

e-mail: stat@tojikiston.com

-publication:

Chief of Central Computer Center
of the State Committee on Statistics
of the Republic of Tajikistan

Baimatov K.F.

Tel: 227-96-09