

**STATE COMMITTEE ON STATISTICS  
REPUBLIC OF TAJIKISTAN**

**INFORMATION BULLETIN**

**FOOD SECURITY AND POVERTY  
IF THE REPUBLIC OF TAJIKISTAN**

**№ 1 / 2006**

**Dushanbe - 2006**

**Statistical service is one of the effective methods for establishing the order and evaluation of prospects of economic agents activity. Under the conditions of market economy, it is not possible to insure the sustainable development without proper accounting, work analysis and resource planning.**

**In this respect, and in accordance with legislation, all enterprises, organizations, institutions, and all production and non-production subjects, independently of their form of ownership, have to submit all required complete and accurate reports in due time to the statistical bodies. Thereby, statistical recording is to be indispensable, complete and unexceptional on the whole territory of the republic.**

**Relevant state authorities have to take required actions to bring accounting system into the line with international standards.**

**E.SH.RAHMONOV**

## **Introduction**

In accordance with European Commission Matrix on Policy Reform of Memorandum of Understanding on Food Security Program in the Republic of Tajikistan the decision about preparation and publishing of Quarterly Food Security Bulletin was made to ensure system of reliable operative information and analysis of current food security situation in the Republic of Tajikistan.

“Food security presumes that all people have access, at all time, to sufficient food required for an active and healthy life. Food security also means physical availability of food in sufficient quantities, accessibility of those foodstuffs for households (through the market and other sources, that suppose sufficient purchasing power), as well as consumption of food in quantities required for satisfying of nutritional needs”.

The purpose of the Bulletin is to bring together and systematize available information on food security in Tajikistan; i.e. the availability of food in the republic and outlook for food production, indicators on access to food, food use and utilization. The Bulletin also contains analysis of current food security situation in the Republic.

The base indicators for Food Security Bulletin are production of food, food availability and accessibility, areas under crops, agricultural production and productivity, main climatic conditions, health indicators, water supply, prices, and quantitative indicators reflecting situation on food market.

The Appendices to the Bulletin show indicators of Poverty Reduction Strategy Paper for 2004, 2005, and 1<sup>st</sup> of 2006, information on nutritional status of various socio-economic groups of the population for 2004-2005, as well as estimated data on food balance for 2004, 2005, and first quarter of 2006.

The presented Quarterly Food Security Information Bulletin of Tajikistan was prepared by State Committee on Statistics with participation of key Ministries and Departments (Ministry of Finance, Ministry of Health Care, Ministry of Labor and Social Protection of Population, Ministry of Education, Ministry of Communication, Ministry of Transport, Social Protection Fund, Hydrometeorological Agency under the Committee for Nature and Forestry Protection of the Republic of Tajikistan, etc.). The publication is prepared with technical and financial support of European Commission in the Republic of

Tajikistan.

The publication is intended both for specialists and all interested persons.

All recommendations, suggestions and remarks related to the content of the Bulletin should be addressed to the State Committee on Statistics of the Republic of Tajikistan at the following address:

17 Bokhtar Street Dushanbe

734025 Tajikistan

Tel. (992 372) 212387, Fax (992 372) 214375

email: [stat@tojikiston.com](mailto:stat@tojikiston.com)

<http://www.stat.tj>

## CONTENTS

Introduction .....	139
Overview .....	141
<b>CHAPTER I. SOCIO-ECONOMIC INDICATORS .....</b>	<b>143</b>
1.1. Gross Domestic Product .....	145
1.2. Price and Tariff Indices.....	146
1.3. Foreign trade .....	147
1.4. Labor market .....	147
<b>CHAPTER II. AVAILABILITY OF FOOD .....</b>	<b>149</b>
2.1. Growth in agricultural production.....	149
2.1.1 Outlook of agricultural production .....	150
2.1.2. Spring crops.....	151
2.1.3. Livestock production .....	153
2.2. Producer prices .....	154
2.3. Trade in basic foodstuffs.....	157
2.4. Availability of food per capita .....	158
<b>CHAPTER III. ACCESS TO FOOD.....</b>	<b>159</b>
3.1. Retail prices.....	159
3.2. Incomes and Expenditures .....	161
3.2.1. Incomes .....	161
3.2.2. Expenditures.....	162
3.3. Poverty in the Republic of Tajikistan .....	163
3.4. Food insecurity: households with spend more than 70% of expenditures on food.....	163
<b>CHAPTER IV. USE AND UTILIZATION .....</b>	<b>164</b>
4.1. Consumption of food products by the population.....	164
4.2. Food security indicators not related to income .....	166
4.2.1. Population morbidity.....	166
4.2.2. Nutritional status of the population .....	168
4.2.3 Immunization.....	168
4.2.4 Breastfeeding of children .....	169

4.2.5 Social Protection in the Republic of Tajikistan .....	170
<b>METHODOLOGY</b> .....	173
Glossary .....	175
List of abbreviations .....	175
Appendix 1. Review of hydro-meteorological conditions of the Republic of Tajikistan during first quarter of 2006 .....	176
Meteorological conditions .....	176
Hydrological conditions .....	177
Review of snow slides and mudflows .....	178
Appendix 2 PRSP Indicators in the Republic of Tajikistan. ....	180
Appendix 3. Changes in average wholesale prices in Tajikistan .....	183
Appendix 4. Changes in average consumer prices in Tajikistan .....	184
Appendix 5. Food balance .....	186
Appendix 6. Money incomes, expenditures and consumption of households, by decile population groups in the Republic of Tajikistan in 2004-2005 .....	192
Appendix 7. Distribution of households and population in them by per capita income in the Republic of Tajikistan .....	193
Appendix 8. Structure of average monthly expenditures of population in the Republic of Tajikistan .....	194
Appendix 9. Per capita consumption of food in the republic of Tajikistan .....	198

## OVERVIEW

According to preliminary estimates, growth of real Gross Domestic Product (GDP) as compared to the similar period of the previous year was positive and amounted to 6.2% in January - March 2006.

The value of gross agricultural output in January - March 2006 in all categories of farms increased by 5.6% as compared to the corresponding period of the previous year and amounted to 133270 thsd.somoni (at current prices), of which: plant products - 796 thsd.somoni (increased by 15.2%), and animal products - 132474 thsd.somoni (increased by 5.5%).

In the first quarter of 2006, production of meat in farms of all categories increased by 5.4% as compared to the similar period of the previous year, milk - increased by 3.4%, eggs - by 8.6%.

Unemployment rate, including hidden unemployment, amounted to 3.1% of economically active population

Monthly average nominal wages and salaries of employees in March 2006 was 107.23 somoni, increasing by 10.8% as compared to February 2006, and by 22.2% as compared to March 2005. The lowest wages and salaries in real sector were observed in agriculture and forestry, amounting to 32.80 somoni and 37.93 somoni, respectively.

As of the end of March 2006, total arrears in salary payments for the republic made up 26526.7 thsd.somoni, of which arrears for March 2006 accounted for 13.8% (3655.7 thsd.somoni).

Monthly inflation rate in consumer's sector made up 1.13% (against 0.60% in the corresponding period of the previous year).

During 2006 retail prices of most basic foodstuffs increased significantly as compared to December 2005, except of flour, cotton oil and eggs. The highest increase of prices was registered for onion, sand sugar, potatoes, carrot, cabbage, milk, rice, and others.

Imports of wheat increased by 30% amounting to 82.5 thsd.tons (against 63.2 thsd.tons in the similar period of 2005), and imports of flour increased by 45% amounting to 111.7 thsd.tons (against 77.2 thsd.tons in the first quarter of 2005).

In 2005 the average daily calorie intake reached 2106.53 Kcal per capita and was higher the recommendations of the World Health Organization (WHO) (2100 Kcal per a day).

However, the adequate daily calorie intake is observed in rural area, while in urban area it was lower and amounted to 1823.12 Kcal per a day

In 2005, consumption of bread and bread products exceeded approved medical norm by 19%. Pensioners spend for food 74.57% of total consumer expenditures

The greatest number of cases of infectious diseases falls on spring and summer periods when population consumes more water and fresh vegetables and fruits. In this period, incidence of tuberculosis and brucellosis, caused by infected animal food is increasing. In the first quarter of 2006, the increase in number of cases of brucellosis by 27.7% and tuberculosis by 28% was observed.

In the first quarter of 2006 incidence of infection diseases among children aged 0-14 increased by 10.7% as compared to the first quarter of 2005. Cases of acute enteric infections account for more than 60% of total number of infection diseases. As compared to the similar period of the previous year, number of cases of acute enteric infections increased by 49.9%, of which cases of bacterial dysentery - by 66.7%, mainly due to use of poor potable water. At the same time, number of cases of typhoid fever decreased by 44.2%.

As of 1 January 2006, 61142 persons received monthly social benefits, of them 41637 persons (68.1%) were disabled persons. The size of social benefit is liken to minimum old age pension. The average size of benefit in 2005 was 10.70 somoni.

## CHAPTER 1. SOCIO-ECONOMIC INDICATORS

*The mentioned below socio-economic indicators depict overall economic situation in the country, required for analysis of food security situation.*

### 1.1 GROSS DOMESTIC PRODUCT

According to preliminary estimates, growth of real Gross Domestic Product (GDP) as compared to the similar period of the previous year was positive and amounted to 6.2% in January - March 2006. The biggest impact was due to increase of production in agriculture, industry and trade.

**Table 1: Main socio-economic indicators**

	2004	2005 <sup>1</sup>	1 <sup>st</sup> quarter 2006
Population (million)	6,8	6,9	6,9
Nominal GDP (mln.somoni)	6157,5	7201,1	1546,1
of which (in %):			
agriculture	22,0	21,4	8,5
industry	20,5	18,5	23,9
services	41,8	43,8	51,6
GDP per capita (somoni)	910,0	1051,2	x
GDP growth , in % to the corresponding period of the previous year	10,6	6,7	6,2
State budget deficit / surplus (as percentage of GDP)	-0,2	-1,5	3,8
Consumer Price Indices (CPI), in % to the corresponding period of the previous year	106,8	107,8	108,4
Price Indices for foodstuffs	105,0	108,9	110,5
Price indices for services	117,3	109,8	113,9
Exchange rate of somoni (per 1 US Dollar)	2,9711	3,1175	3,2087
Officially registered unemployment rate	2,2	2,1	2,4
Number of registered unemployed, thsd.persons	41,6	42,2	49,0
in % to the corresponding period of the previous year	88,7	101,4	123,4

	2004	2005 <sup>1</sup>	1 <sup>st</sup> quarter 2006
Monthly average wages and salaries (somoni)	61,81	85,99	98,75
in % to the corresponding period of the previous year	138,6	141,5	123,1
Trade balance (mln.USD)	-276,4	-421,1	- 72,7
Share of food in total imports, %	9,6	11,7	10,9
Share of food in total exports, %	3,2	3,3	1,8

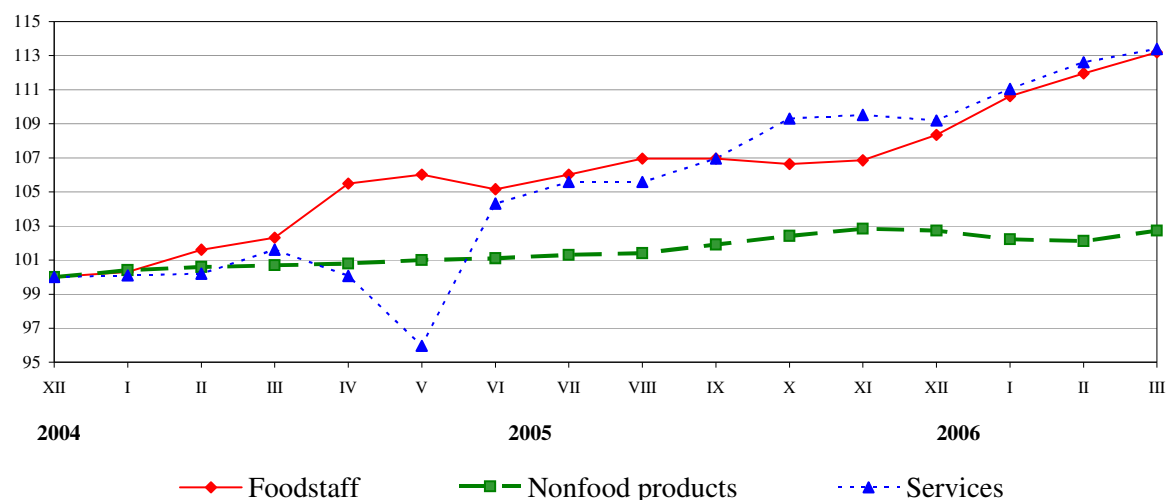
1) preliminary data

Source: State Committee on Statistics

## 1.2. Price and Tariff Indices

In January-March 2006, consumer price index constituted 103.4%, of which for foodstuff - 104.4%, non-food products - 100.0%, and paid services to population - 103.8%. Monthly inflation rate in consumer's sector made up 1.13% (against 0.60% in the corresponding period of the previous year).

**Graph 1: Consumer price indices for foodstuff, non-food products and paid services (at the end of each month, in % to December 2003)**



**During the first quarter of 2006, the increase of prices of foods outpaced those of non-foods.**

More detailed information on prices of food is available in the section 3 “Access to food”.

### **1.3 Foreign trade**

In the first quarter of 2006, foreign trade turnover of the Republic of Tajikistan including electric power and natural gas was valued at 695.0 million USD, which is by 206.3 mln.USD (or 42.2%) higher than in the 1<sup>st</sup> quarter of 2005. The gap between exports and imports determined the deficit of trade balance valued at - (minus) 60.3 million USD.

In the first quarter of 2006, volume of exports amounted to 317.4 mln.USD, which is by 50.2% or 106.1 mln.USD higher than in the first quarter of 2005. Volume of imports amounted to 377.6 mln.USD, which is by 36.1% or 100.2 mln.USD higher than in the similar period of 2005.

About 45.2% (or 314.0 mln.USD) of foreign trade turnover falls on the CIS countries, and 54.8% (or 381.0 mln.USD) falls on other countries of the world. The deficit of trade balance with CIS countries constituted -224.3 million USD; the trade balance with other countries of the world was positive 164.0 million USD.

Major export goods were aluminum, cotton, electric power, precious and semiprecious stones and metals.

Major import goods were chemical industry products, electric power, machines and equipment as well as plant products, such as wheat, flour, sugar and vegetable oil.

### **1.4 Labor market**

According to preliminary estimates, the number of economically active population (employed and officially registered unemployed) in March 2006 was 2019.6 thsd.persons, of them 1970.6 thsd.persons (97.6%) were occupied in the economy. Number of unemployed officially registered in employment offices of Ministry of Labour and Social Protection of the Republic of Tajikistan, as of the end of March 2006 amounted to 49.0 thsd.persons, which is by 5.9% higher than in the previous month. In the total number of unemployed, women accounted for 53.3% (26.1 thsd.persons), and persons aged 15-29 accounted for 54.1% (26.5 thsd.persons). Officially registered unemployment rate was 2.4% of economically active population.

In March 2006, payroll number of employed in enterprises of all forms of ownership amounted to 1028.5 thsd.persons (or 52.2% of total number of employed population). In March 2006, payroll number of employed increased by 1.5% as compared to February 2006, and decreased by 1.8% as compared to March 2005.

From the beginning of 2006, 17.2 thsd.persons applied to employment offices for a job (which is by 9.8% higher than in 2005). Of them, 47.4% (8.1 thsd.persons) were young people aged 15-29. All applied persons were unemployed. 44.9% (7.7 thsd.persons) of them are persons who were looking for a job for the first time, and 46.5% (8.0 thsd.persons) did not have a profession / qualification.

As of the end of March 2006, the number of vacancies, offered by enterprises through employment offices decreased by 7.8% as compared to the similar period of 2005, and made up 15.8 thsd. At the same time, the number of vacancies for blue-collar job increased by 17.9% and reached 9.5 thsd.

Measures for social protection of unemployed population and increase of their competitiveness on labour market include professional training, retraining, professional development, and organization of public paid works.

In January-March 2006, number of professional trainings through employment offices for registered unemployed and their engaging in public paid works increased as compared to the corresponding period of 2005. In January-March 2006, 2.3 thsd. registered unemployed were offered professional training by employment offices (which is by 39.2% higher than at the corresponding period of the previous year). 0.5 thsd.persons have completed the training courses.

Besides, 5.5 thsd.persons were sent to public paid works (of which 4.4 thsd. persons were registered as unemployed), which is by 16.9% higher than at the corresponding period of the previous year.

Employment offices provide unemployed population with various career guidance services. As of the end of March 2006, 2.3 thsd. unemployed were provided with such services.

The actual number of unemployed in the republic can be higher due to hidden and unregistered unemployment. In January - March 2006, 11.6 thsd.persons were on leave on initiative of administration, of them 9.5 thsd.persons (81.9%) were on leave without pay. 1.0 thsd.persons were working during incomplete working week or working day. Unemployment rate, including hidden unemployment, amounted to 3.1% of economically active population.

Monthly average nominal wages and salaries of employees in March 2006 was 107.23 somoni, increasing by 10.8% as compared to February 2006, and by 22.2% as compared to March 2005.

Real increase of wages and salaries (deflated by the CPI) in March 2006 made up 9.8% as compared to February 2006, and 12.1% as compared to March 2005.

In March 2006 the lowest wages and salaries in real sector were observed in agriculture and forestry, amounting to 32.80 somoni and 37.93 somoni, respectively. The highest wages and salaries were in construction (285.70 somoni), communication (275.39 somoni), transport (259.07 somoni), and industry (213.40 somoni). In nonmaterial sphere, the highest salary remains in the area of finance and crediting (522.76 somoni in March 2006).

As of the end of March 2006, total arrears in salary payments for the republic made up 26526.7 thsd.somoni, of which arrears for March 2006 accounted for 13.8% (3655.7 thsd.somoni).

## **CHAPTER II. AVAILABILITY OF FOOD**

*Availability refers to the physical presence of food as a result of domestic production or market operations. On country level availability of food is determined by combination of food stocks, commercial imports, food aid and domestic production. The availability is also determined by the following elements: weather conditions, crop yield, livestock and productivity, producer prices for food, food prices in neighboring countries, as well as national policy defining production, trade, distribution and pricing.*

### **2.1. Growth in agricultural production**

The value of gross agricultural output in January - March 2006 in all categories of farms increased by 5.6% as compared to the corresponding period of the previous year and amounted to 133270 thsd.somoni (at current prices), of which: plant products - 796 thsd.somoni (increased by 15.2%), and animal products - 132474 thsd.somoni (increased by 5.5%).

The value of gross agricultural output in all categories of farms in GBAO amounted to 3223 thsd.somoni (increased by 2.3%), Soghd Oblast - 58534 thsd.somoni (by 4.2%), Khatlon Oblast - 39788 thsd.somoni (by 10.1%), and regions of the republican subordination - 31725 thsd.somoni (by 3.2%).

### 2.1.1. Outlook for agricultural production

#### Climate influence on crop production

In *January*, the average monthly air temperature was below the mean annual values by 1.5-3.0 degrees in valleys and piedmont areas, and above the mean annual values by 1.5-3.5 degrees in mountainous regions. The coldest period was 1-7 January

Precipitations were frequent: during 16-21 days in valleys, piedmonts and mountains, and 7-14 days in high mountain areas. The amount of precipitation was mainly above the mean annual values (150-300% of the norm). Intensive precipitation, mainly snow, were registered on 31 January (in some places 20-50 mm for a day).

As before, average monthly water discharge of the most rivers of the republic was above the norm by (103-150%). Nurek reservoir capacity decreased by 1.042 mln.m<sup>3</sup> and amounted to 7274 mln.m<sup>3</sup>, which is less than the level of the previous year by 0.145 mln.m<sup>3</sup>.

The capacity of Kairakum reservoir increased by 0.324 mln.m<sup>3</sup> and reached 3478 mln.m<sup>3</sup> which is higher than the level of the previous year by 0.393.

In *February*, the average monthly air temperature was above the mean annual values by 3.0-5.00 degrees. The most part of the month was characterized by higher temperature conditions, and only in third decade of the month temporary fall of temperature was registered. Monthly amount of precipitations, registered mainly during the second and third decades of the month, was within and above the mean annual values. The heaviest precipitation were registered during 17-19 and 23-24 February (30-46 mm). During second and third decades of **February**, increase of water content in Yahsu, Kyzylsu rivers, and rivers of southern slope of Gissar range was observed.

In *March*, the average monthly air temperature on the most part of the republic was above normal by 2-4<sup>0</sup> degrees.

Precipitations were seldom (6-11 days) and not very intensive. Only at the end of the month heavy rains were registered almost on the whole territory of the republic (20-44 mm).

During March increase of water content in the rivers of the republic, mainly in the rivers of Gissar range and southern part of the republic, was observed. Average monthly water discharge of the most rivers was below the last year values by 46-80%.

**Table 2: Water reservoirs as of 31 March 2006**

Water reservoirs	Changes during the month	Volume of water in 2006		Volume of water in 2005	
	mln. cubic meters	mln. cubic meters	in % to total capacity	mln. cubic meters	in % to total capacity
Kayrakkum	-0,167	3320	79,8	3374	81,1
Nurek	+2,332	8421	80,2	8031	76,4

The weather reports prepared by the Hydrometeorological Agency of the Republic of Tajikistan for the first quarter of 2006 are attached at Appendix 1.

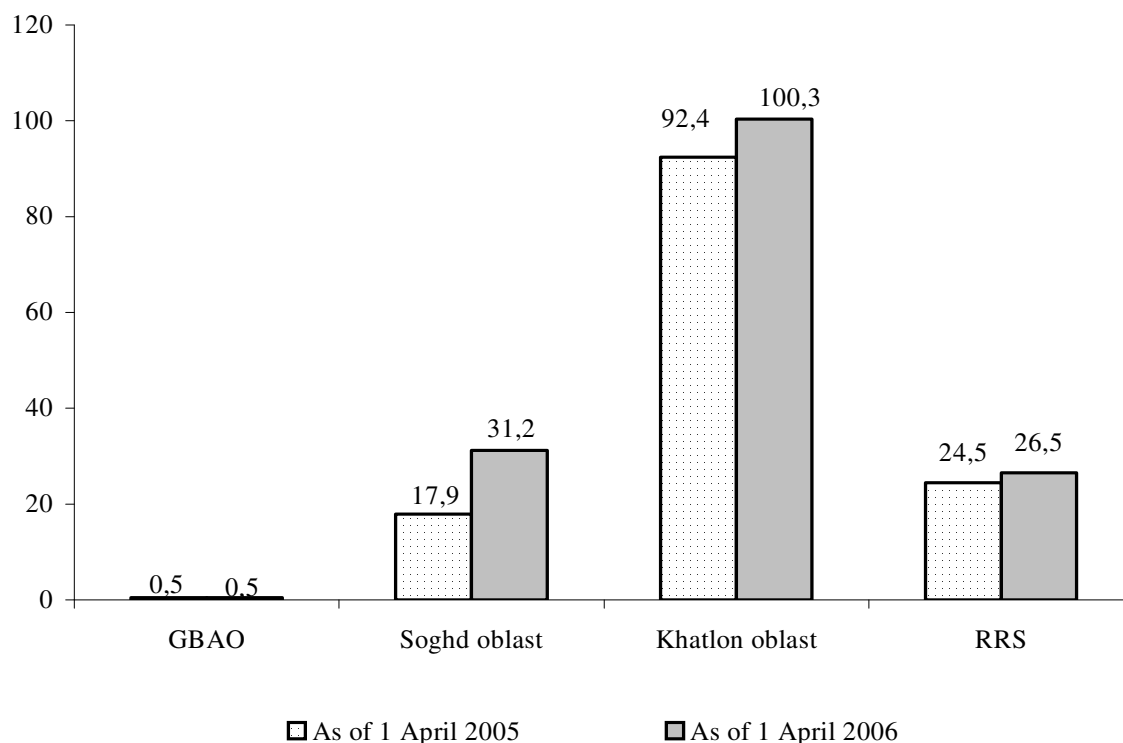
**Table 3: Sown area and gross harvest**

	2004	2005	1 quarter	
			2005	2006
<b>Sown area (thsd.ha)</b>	905,6	901,1	254,3	306,1
<b>Winter crops</b>	163,7	181,2	115,3	147,5
Cereal crops	163,7	181,2	115,3	147,5
<b>Spring crops</b>	741,9	719,9	139,0	158,6
Cereal crops	240,1	214,3	94,5	89,9
wheat	170,7	150,1	81,1	69,8
barley	37,5	31,3	12,1	16,9
<b>Industrial crops</b>	333,1	352,4	24,4	30,5
Potatoes	28,6	27,5	1,1	1,8
Vegetables	32,0	33,5	3,8	6,1
Melons	10,6	9,2	0,6	1,2
<b>Gross harvest, thsd.tons</b>				
Vegetables	681,5	718,5	0,4	0,5

As of 1 April 2006, the share of areas under cereals and leguminous cultures accounted for 44,6% of all sown areas, under technical cultures - 10,0%, of which under cotton - 5,6%, under feed crops - 10,7%, under potatoes, vegetables and melons - 2,4%.

### 2.1.2. Spring crops

As of 1 April of the current year, spring crops were sown on an area of 158.6 thousand ha, or 114% of the areas under spring crops at the corresponding time last year. Details on spring crops sowing by Oblasts are presented in Graph 2.

**Graph 2: Area under spring crops***(thsd.ha)*

The area sown to potatoes amounted to 1.8 thsd.ha, which is higher by 0.7 thsd.ha than at the corresponding time last year. Similarly, vegetables were sown on 6.1 thsd.ha that is by 2.3 ths.ha higher than in the corresponding period of the last year.

**Table 4: Availability of seed for spring seeding works  
as at the beginning of February 2006**

	<i>Availability of seeds, thsd.tons</i>	<i>In percent of the required amount</i>
Cereals and leguminous cultures (excluding maize)	31,4	41,3
of which:		
wheat	28,8	48,0
rice	0,4	17,0
Maize	0,6	50,0
Potatoes	11,1	11,0

*Source: State Committee on Statistics*

The above table shows that quantity of actually sowed agricultural crops by agricultural enterprises and dehkan farms was below the norm and didn't reach even a half of total needs.

### 2.1.3. Livestock production

As of 1 April 2006, number of cattle in farms of all categories increased by 2.8% as compared to the similar date of the previous year; the number of sheep and goats increased by 4.0%, poultry – by 5%. The increase in number of poultry is observed in farms of Soghd oblast (by 7.8%) and Khatlon oblast (by 8.3%) .

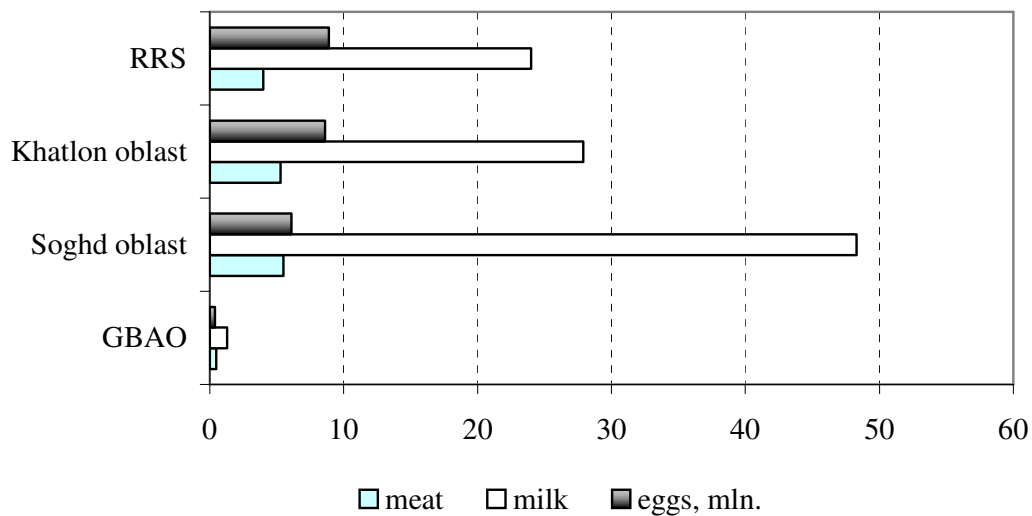
In the first quarter of 2006, farms of all categories produced 15.4 thsd. tons of meat or 105.4% as compared to the similar period of the previous year, 101.5 thsd.tons of milk (103.4%), and 24.1 mln.eggs (108.6%).

The average milk yield per cow for the first quarter of 2006 was 354 kg decreasing by 1% as compared to the corresponding period of the previous year. During the reporting period, in average 22 calves were received from every 100 female cows. The average output of eggs from 1 laying hen was 31 eggs decreasing by 6% as compared to 2005. Laying ability in farms of Khatlon oblast was increased by 50%

**Table 5: Main indicators of livestock production in the Republic of Tajikistan**

	2004	2005	1 quarter 2005	1 quarter 2006
<b>Production, thsd.tons</b>				
Meat (slaughtered)	48,2	53,7	7,3	7,7
of which:				
Beef and veal	21,8	24,3	3,3	3,5
Mutton and goats meat	23,8	26,5	3,6	3,8
Poultry	0,5	0,6	0,1	0,1
Other meat	2,1	2,3	0,3	0,3
Milk	489,5	533,0	98,1	101,5
Eggs, mln.	77,7	98,7	22,2	24,1
<b>Productivity</b>				
The average milk yield per cow, kg	1573	1597	359	354
The average output of eggs per laying hen, pieces	261	123	33	31

**Graph 3. Production of main live-stock products  
in all categories of farms in the first quarter of 2006, thsd. tons**



## 2.2. Producer prices

**Table 6: Changes in producer prices**

(somon / kg)

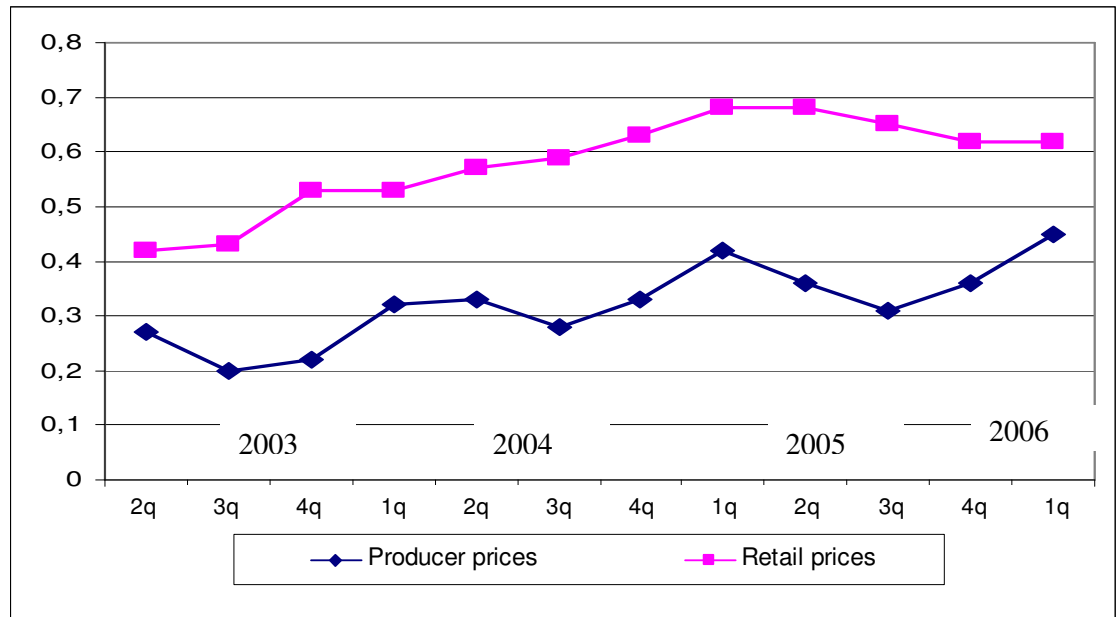
	2004				2005				2006
	I q.	II q.	III q.	IV q.	I q.	II q.	III q.	IV q.	I q.
Wheat	0,32	0,33	0,28	0,33	0,42	0,36	0,31	0,36	0,45
Milk	0,32	0,32	0,31	0,29	0,42	0,41	0,41	0,41	0,51
Potatoes	0,18	0,27	0,17	0,18	0,19	0,19	0,29	0,36	0,28

Source: State Committee on Statistics

In the first quarter of 2006, the imports of wheat increased by 30% as compared to the first quarter of 2005.

**Graph 4. Trends in producer and retail prices of wheat (by quarters)**

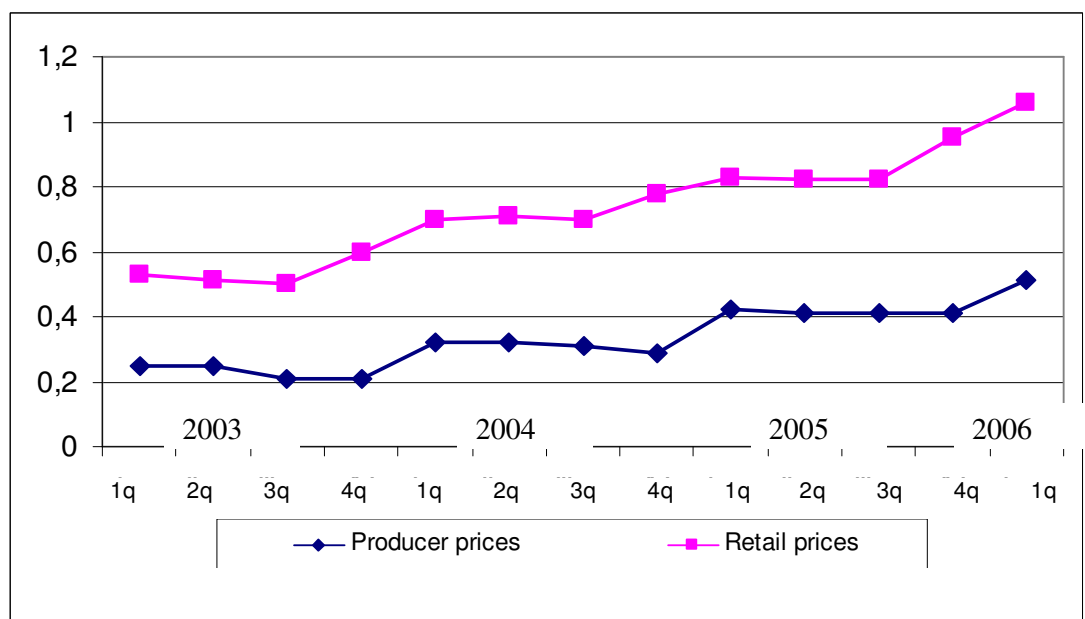
(somon/kg)



In 2004 and 2005 the average price of milk was subject to seasonal fluctuations, and prices mainly increase in fourth quarter of each year. In the first quarter of 2006, retail price of milk was 1.06 somoni (and increased as compared to the similar period of the previous year by 28%), and wholesale price was 0.51 somoni (and increased by 21%).

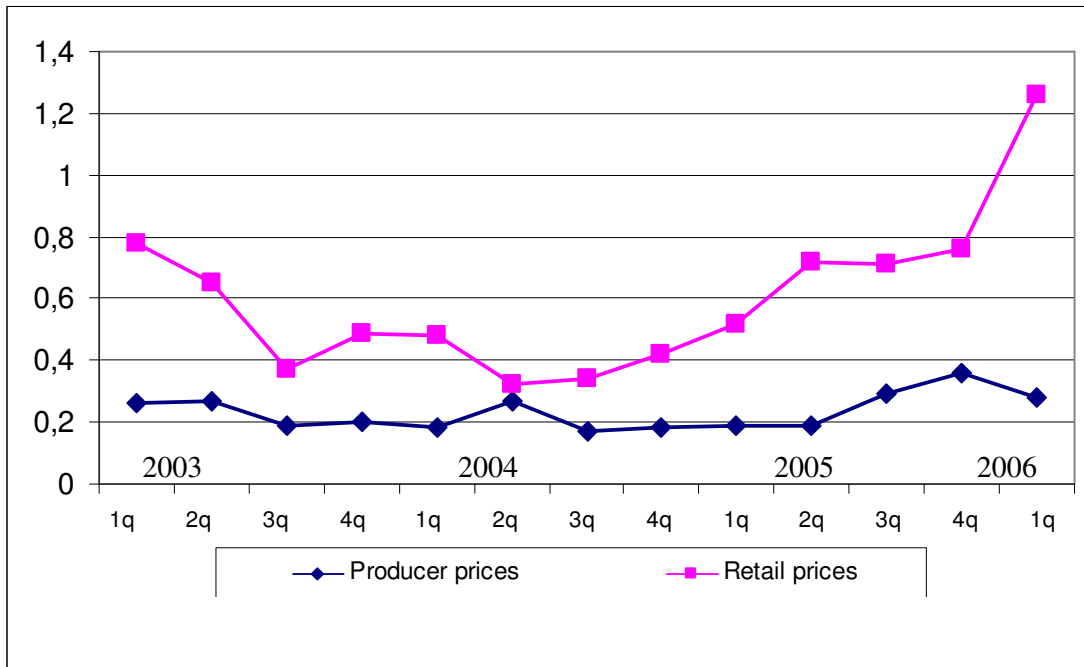
**Graph 5. Trends in producer and retail prices of milk**

(somon/kg)



**Graph 6. Trends in producer and retail prices of potatoes**

(*somoni/kg*)



The given graphs show that change in retail prices is higher than in producer's ones. This trend is specific for all types of agricultural products. Usually, in second quarter of a year prices of potatoes come down, but in the second quarter of 2005 they increased significantly due to bad weather conditions and late maturing. In the third quarter of 2005 the price of potatoes remained on the level of the second quarter. Wholesale prices increased only in the third quarter of 2005 and continued to increase along with retail prices in the fourth quarter. In the first quarter of 2006 both retail and wholesale prices of potato increased by 47 and 2.4 times, respectively, as compared to the first quarter of 2005 (See Appendices 3 and 4).

### 2.3. Trade in basic foodstuffs

Share of food products in the total value of exports of Tajikistan accounted for 3.1% and 1.8% in the first quarters of 2005 and 2006, respectively. The share of food products in total volume of imports was well higher and accounted for 12.1% and 10.9%, respectively.

The major food products imported to the Republic of Tajikistan were wheat and flour (the greatest share), as well as sugar, vegetable oil, fruits, flour products (macaroni, noodles, bread, cakes, pastries), eggs, tea and others.

Imports of food products in the first quarter of 2006 increased by 38% as compared to the similar period of the previous year. Imports of milk and dairy products increased by 50%, spaghetti, noodles and other - by 69%. Imports of wheat increased by 30% amounting to 82.5 thsd.tons (against 63.2 thsd.tons in the similar period of 2005), and imports of flour increased by 45% amounting to 111.7 thsd.tons (against 77.2 thsd.tons in the first quarter of 2005).

**Table 7: Exports and Imports of basic food products**

	<i>(thsd.tons)</i>			
	<i>1<sup>st</sup> quarter 2005</i>	<i>1<sup>st</sup> quarter 2006</i>	<i>1<sup>st</sup> quarter 2005</i>	<i>1<sup>st</sup> quarter 2006</i>
	<i>Exports</i>		<i>Imports</i>	
<i>Food products</i>	24,6	20,5	190,0	261,9
of which				
wheat			63,2	82,5
flour			77,2	111,7
sugar			18,5	22,9
spaghetti, noodles, elbow and other products			1,6	2,7
vegetable oil			8,4	9,5
milk and dairy products			0,4	0,6
eggs	1,0	-	1,1	2,3
tea	0,0	0,0	2,0	1,4
vegetables	2,9	1,4	0,2	0,1
fruits and berries	15,9	1,4	1,9	5,0
fruit and vegetable juices	3,2	2,5	0,2	0,4
Canned vegetables, tomatoes	1,0	0,5	0,1	0,2
Share of food products in total volume, %	3,1	1,8	12,1	10,9

## 2.4. Availability of food per capita

The availability of food per capita is calculated using a food balance. A food balance shows for each basic food commodity, the total physical availability and utilization of that foodstuff over a given period of time, usually 1 year. **Total physical availability** is the sum of stocks at the beginning of the period, production and imports of that commodity in a given period of time. **Total utilization** covers use for human consumption + use as animal seed + seed + losses + exports + stocks at the end of the period. In any one period, the availability and utilization of the same commodity must balance. Drawn up over a succession of years, food balances usually reveal a trend in total availability, imports, exports, and the availability of food for human consumption and for feed use. Dividing the annual amount of food available for human consumption by the population gives a key indicator of availability: the average availability of food per capita per year. This measure of food availability is a national average, which takes no account of households' access (i.e. ability to produce, purchase or otherwise obtain) to food.

**Table 8: Consumption of foodstuff per capita**

(kg / month)

	2004	2005
Bread products (expressed in grain)	13,0	12,9
Potatoes	2,9	2,7
Vegetables and melons	6,4	6,6
Fruits and berries	3,8	3,2
Sugar and confectionery items	0,8	0,9
Meat and meat products	0,6	0,7
Milk and dairy products	4,0	4,0
Eggs (pieces)	2	2
Vegetable oil	1,0	1,0
Fish and fish products	0,01	0,01

Source: Household budget survey

The analysis of food balances shows that food availability remains stable during last years.

**More detailed information is available in Appendix 5 “Food balance”.**

## CHAPTER III. ACCESS TO FOOD

*Access to food refers to the ability of households to obtain adequate safe and appropriate foods to meet their needs for a healthy and active life. Access can be through production for own consumption, market purchases or donations / transfers.*

### 3.1. Retail prices

During 2006 retail prices of most basic foodstuffs increased significantly as compared to December 2004, except of flour, cotton oil and eggs (See Table 8, Appendix 4).

**Table 9: Average prices for some food products in consumer's sector  
(average for republic)**

*at the end of period, somoni per kg, liter, piece*

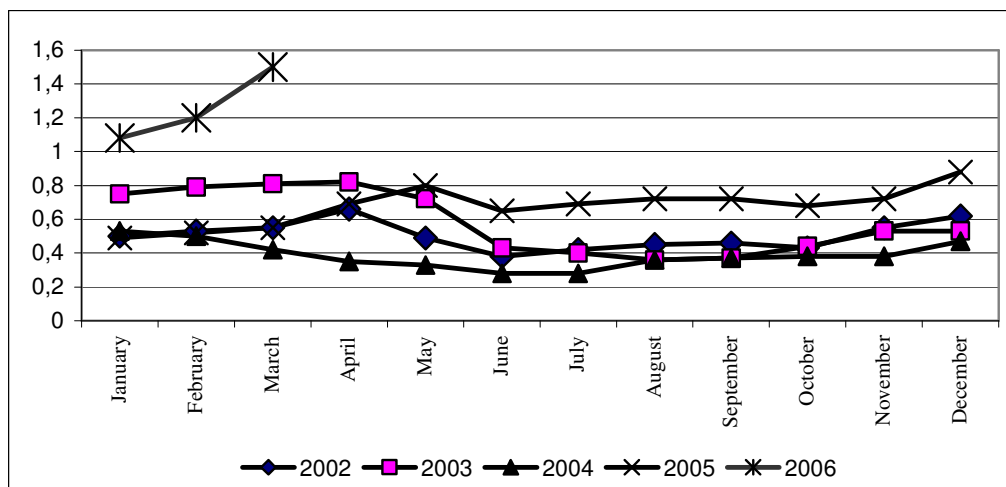
	2006 z.			2005 z.	
	January	February	March	March	December
Beef	7,51	7,51	7,54	6,55	7,51
Animal oil	11,35	11,45	11,35	9,79	11,39
Cotton oil	2,66	2,63	2,59	2,71	2,69
Milk	0,98	0,98	1,03	0,77	0,96
Eggs (10 pieces)	3,09	2,83	2,49	2,61	3,37
Sand sugar	1,90	2,20	2,46	1,57	1,75
Salt	0,35	0,35	0,35	0,34	0,35
Light wheat flour	0,98	0,97	0,95	1,02	0,98
Bread made from light wheat flour	1,00	1,00	1,00	1,00	1,00
Rise	2,30	2,30	2,38	1,57	2,30
Potatoes	1,08	1,20	1,17	0,55	0,88
Onion	0,54	0,57	0,67	0,58	0,46
Carrot	0,27	0,27	0,28	0,25	0,22
Apples	1,68	1,80	2,04	1,60	1,62
Vodka	5,57	5,87	5,82	5,63	5,57

During 2006, the highest increase in prices was registered for onion (43.9%), sand sugar (40.5%), potatoes (33.1%), carrot (24.6%), cabbage (18.4%), apples (17.2%), milk (7.5%), rice (3.8%), semi-smoked sausage (3.6%), pea (2.2%), filter-tipped cigarettes (1.9%), mutton (0.8%), chocolate sweets (0.5%), pearl barley and cooked sausage (0.4%), pasta and beef (0.3%).

At the same time, the highest decrease in prices was registered for eggs (26.0%), evaporated milk formula (4.1%), cotton oil (3.8%), light wheat flour (3.5%), live fish

(2.3%), buckwheat (1.2%), poultry meat (0.9%), vodka (0.8%), condensed milk (0.5%), margarine and animal oil (0.3%).

**.Graphs 7: Average monthly retail prices for potatoes (somon / kg)**



**Potatoes.** Retail prices of potatoes are subject to seasonal fluctuations and also to fluctuations in supply and demand. The highest seasonal price is normally recorded in the second quarter of each year, prior to the first new harvest. However, during 2005 and the first quarter of 2006, the prices of potatoes were increasing continuously. Thus, in the first quarter of 2006 as compared to the first quarter of 2005 price of potato increased by 2.4 times.

**Flour.** In 2005 and first quarter of 2006 the price of flour was subject to slow decrease. In the first quarter of 2006 as compared to the first quarter of 2005 the prices decreased by 6% and amounted to 0.96 somoni per kg.

**Beef and other kinds of meat.** During 2005, the prices of *beef* were subject to increase. Thus, in January 2006 the prices of *beef* amounted to 6.64 somoni, and as of the end of 2005 they reached 7.6 somoni per kg. During January - March 2006, the prices increased by 0.3% and amounted to 7.62 somoni per kg.

During 2005, the prices of *mutton* were also subject to increase. Thus, in January 2006 the prices of *mutton* amounted to 8.13 somoni, and as of the end of 2005 they reached 8.76 somoni per kg. During January - March 2006, the prices increased by 0.7% and amounted to 8.90 somoni per kg.

## 3.2. Incomes and expenditures

The source of information on household incomes and expenditures is the Household Budget Survey which is conducted on the basis of a monthly survey of 925 households and is comprised of the following: demographic information on the composition of the family, housing and infrastructure, volume of consumption in the family including domestically manufactured items, economic activity in both agricultural and non-agricultural sectors.

### 3.2.1. Incomes

In 2005 cash incomes of population increased by 21.5% as compared to 2004 and amounted to 44.20 somoni in a month per capita. (See Table 9).

**Table 10: Trends in population incomes and expenditures**

	2004	2005
Average per capita incomes (somon / month)	33,75	44,20
Growth in real incomes (%)	17,6	21,5
Average monthly salary	128,1	141,5
Growth in real salary (%)	121,2	131,2
Average per capita expenditures (somon / month)	32,93	43,43
Growth in real expenditures (%)	17,8	22,4

*Source: Household Budget Survey and current statistical data*

The most important sources of cash incomes of households continue to remain labor incomes - 57.2% and receipts from sales of agricultural products - 13%. In 2005, the gap between the average incomes of the highest and the lowest income deciles amounted to 6.4 times.

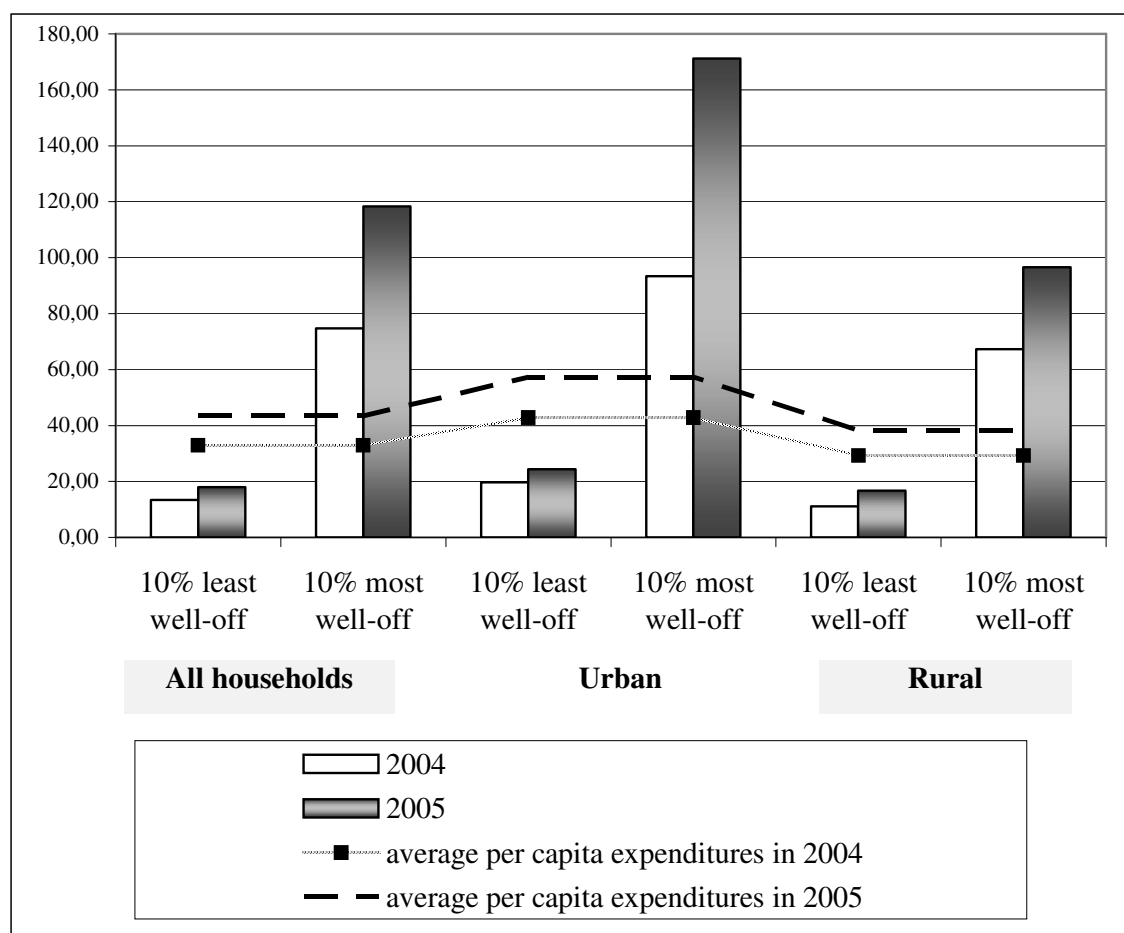
**As of the end of December 2005**, total arrears in salary payments for the republic made up 27.5 mln.somoni.

### 3.2.2. Expenditures

In 2004, the average expenditures of the population also rose in nominal and real terms due to higher real incomes and stabilization of prices on consumer goods and services. In 2005 average expenditures of population have risen mainly due to increase in prices (see Appendix 10 and Graph 9).

The gap between expenditures of the highest and the lowest deciles decreased from 6.1 times in 2003 to 5.5 times in 2004. However in 2005, the gap increased up to 6.6 times against 5.5 times in 2004.

**Graph 8: Growth of average per capita expenditures, by decile groups of the population in 2004 and 2005**



### **3.3. Poverty in the Republic of Tajikistan**

*Poverty and food & nutrition insecurity are closely related and form a vicious circle. Food and nutrition insecurity is defined as “When people lack secure access to sufficient amounts of safe and nutritious food for normal growth and development and an active and healthy life. It may be caused by the unavailability of food, insufficient purchasing power, inappropriate distribution, or inadequate use of food at the household level. Food insecurity, poor conditions of health and sanitation, and inappropriate care and feeding practice are the major causes of poor nutritional status. Food insecurity may be chronic (persistent), seasonal or transitory.*

The poor frequently suffer from any or all of the following characteristics: inadequate money, poor education, and few resources, poor access to employment opportunities, and have little power. They tend to live in poor housing and may have poor access to food, health services, sanitation. Without targeted actions to identify and alleviate poverty, the poor tend to become poorer and possibly more food insecure.

When determining poverty rate many factors that can be grouped into three groups should be considered:

- ◆ Incomes (total family income by sources)
- ◆ Wealth (movable assets and real estate, housing conditions, communal services)
- ◆ Population (access to primary health services and education, occupational activities, employment, unemployment)

Indicators of Poverty Reduction Strategy of the Republic of Tajikistan are given in Appendix 2.

### **3.4. Food insecurity: households spending more than 70% of expenditures on food**

*Food insecurity means a situation when people have no regular physical, economic or social access to adequate quantities of qualitative and safe food required for their nutrition, which meets their preferences for an active and healthy life.*

The results of the Household Budget Survey (Table 11) show that the share of expenditures for food in the structure of total household's expenditures accounted for less than 70% and decreased by 0.8% as compared to 2004. The share of expenditures for food in urban area decreased by 0.8%, and in rural area - by 0.7%. At the same time, pensioners spend for food 74.57% of total consumer expenditures (Table 11).

**Table 11: Share of consumer expenditures for food  
in total structure of household expenditures**

	<b>2004</b>	<b>2005</b>
<b>Republic of Tajikistan</b>	<b>64,5</b>	<b>63,7</b>
Urban	68,6	67,8
Rural	62,1	61,4
<b>Oblasts</b>		
Dushanbe	84,24	84,36
GBAO		
Sogd oblast	57,2	55,94
Khatlon oblast	66,84	66,60
RRS	66,81	65,84
<b>Vulnerable groups of population</b>		
Households having 3 and more children	64,76	64,8
Pensioners	79,21	74,57

More detailed information on expenditures, incomes and deciles is available in Appendix 6.

## CHAPTER IV. USE AND UTILIZATION

*Use of food refers to the selection, composition, preparation and allocation of food within the family. Utilization of food refers to the ability of the human body to take and use food within the body. Food use covers knowledge of appropriate diets, and proper allocation of food. The ability of the body to utilize food is affected by its state of health and access to clean drinking water, access to basic health services, etc. The ultimate measure of food security is the nutritional status of the population.*

### 4.1. Consumption of food products by the population

One of the measurements of food and nutritional insecurity is the calculation of daily calorie intake per one household member. The average daily calorie intake was 2071.62 Kcal per capita in 2004. In 2005 the average daily calorie intake reached 2106.53 Kcal per capita and was higher the recommendations of the World Health Organization (WHO) (2100 Kcal per a day). However, the adequate daily calorie intake is observed in rural area, while in urban area it was lower and amounted to 1823.12 Kcal per a day.

In all regions of Tajikistan consumption of bread and bread products exceeded approved medical norm by 19% and amounted on average to 154.8 kg in 2005 per one household

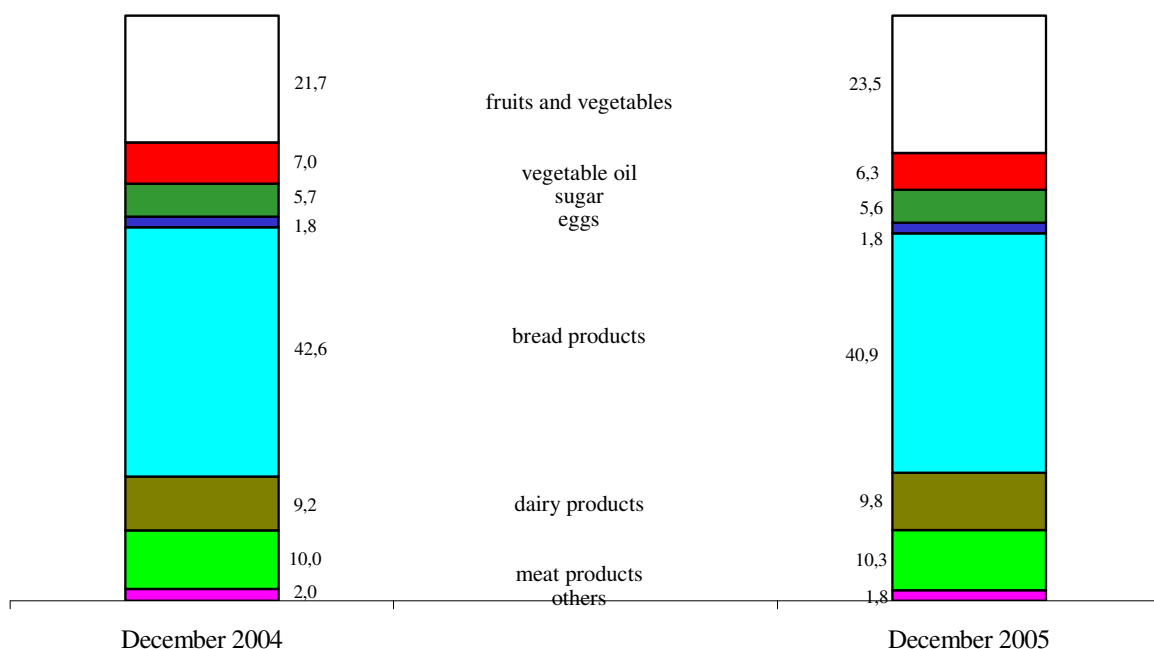
member.

In 2005 the consumption of potatoes in Tajikistan amounted to 32.4 kg per capita, vegetables and melons – 79.2 kg, milk and dairy products – 39.6 kg, meat and meat products – 8.4 kg, vegetable oil – 12 kg, eggs - 24 pieces, sugar and confectionery – 10.8 kg, fruits – 38.4 kg.

In total structure of household's expenditures for food, bread and bread products occupies the first place (24.6%).

The cost of *consumer's basket*, at actual consumption (according to household survey 2003) amounted to 36.42 somoni per one household member in prices of December 2005, while the cost of food basket according to rational nutritional standard would amount to 86.84 somoni.

**Graph 9. Structure of consumer's basket in December 2004-2005  
(as of the end of the month, in %, per one household member)**



Appendix 9 shows the detailed information on per capita food consumption in the households of the Republic of Tajikistan.

**Table 12: Nutritional values of foods consumed per a day (excluding beer and wine)**

	<i>Per one household member per a day</i>	<i>of which:</i>		<i>Per one household member per a day</i>	<i>of which:</i>	
		<i>urban area</i>	<i>rural area</i>		<i>urban area</i>	<i>rural area</i>
	2004			2005		
Proteins, gr.	47,58	38,59	51,11	47,90	38,84	51,41
of which animal, gr.	5,68	4,96	5,96	5,87	5,04	6,19
Fats, gr.	43,62	43,53	43,73	46,70	45,03	47,39
of which animal, gr.	6,81	6,84	6,80	7,21	7,32	7,17
Carbohydrate, gr.	364,94	299,10	390,87	366,47	298,59	392,82
Caloric value of consumed food, k/calories	2071,62	1821,58	2171,34	2106,53	1823,12	2217,15
of which animal, gr.	100,89	89,62	105,37	105,53	94,18	109,93

#### 4.2. Food security indicators not related to income

Food utilization also depends on the health status of the population as well as on the knowledge of hygiene and appropriate diets, on access to basic health services and utilities such as clean drinking water and sanitation.

##### 4.2.1 Population morbidity

The greatest number of cases of infectious diseases falls on spring and summer periods when population consumes more water and fresh vegetables and fruits. In this period, incidence of tuberculosis and brucellosis, caused by infected animal food is increasing.

**Table 13. Population morbidity caused by some specific infection diseases***(cases)*

	2004	2005*	1 quarter 2005	1 quarter 2006
Total number of registered cases	99296	102907	10238	10851
Acute enteric infections	70521	79927	4140	5450
of which:				
Bacterial dysentery	1557	2103	192	274
Typhoid fever	2481	2010	320	233
Tuberculosis	3324	4204	651	833
Brucellosis	1309	1614	206	263

\*) *adjusted*

In the first quarter of 2006 incidence of infection diseases increased by 6% as compared to the first quarter of 2005. Cases of acute enteric infections account for 53.2% of total number of infection diseases. As compared to the similar period of the previous year, number of cases of acute enteric infections increased by 31.6%, of which cases of bacterial dysentery - by 42.7%, mainly due to use of poor potable water. At the same time, number of cases of typhoid fever decreased by 27.2%.

During the reported period, increase in number of cases of tuberculosis by 28% as compared to the first quarter of 2005 was observed.

In the first quarter of 2006 as compared to the first quarter of 2005, number of cases of brucellosis increased by 27.7%.

**Table 14. Morbidity of children (0-14) by some specific infection diseases**

*(cases)*

	2004	2005*	1 quarter 2005	1 quarter 2006
Total number of registered cases	75255	77361	6735	7457
Acute enteric infections	58797	65827	3012	4515
of which:				
Bacterial dysentery	700	760	63	105
Typhoid fever	966	810	156	87
Tuberculosis	241	291	38	44
Brucellosis	187	226	27	28

\*) *adjusted*

In the first quarter of 2006 incidence of infection diseases among children aged 0-14 increased by 10.7% as compared to the first quarter of 2005. Cases of acute enteric infections account for more than 60% of total number of infection diseases. As compared to the similar period of the previous year, number of cases of acute enteric infections increased by 49.9%, of which cases of bacterial dysentery - by 66.7%, mainly due to use of poor potable water. At the same time, number of cases of typhoid fever decreased by 44.2%.

During the reported period, increase in number of cases of tuberculosis among children of 0-4 years old by 15.8% as compared to the first quarter of 2005 was observed.

In the first quarter of 2006 as compared to the first quarter of 2005, number of cases of brucellosis increased by 3.7%.

**Table 15: Nutritional status indicators**

	<i>Total number of persons on the dispensary books</i>			<i>of which cases revealed for the first time (new cases)</i>		
	<i>2003</i>	<i>2004</i>	<i>2005*</i>	<i>2003</i>	<i>2004</i>	<i>2005*</i>
Number of children of 0-14 years old suffering from malnutrition	6261	6351	5836	7769	7104	7363
per 100 000 children of this age group	242,0	245,8	224,5	298,8	274,8	283,2
<b>Population suffered from endemic goitre, total</b>	140560	134495	114500	127288	123802	109500
per 100 000 population	2116,9	1983,6	1654,6	1937,5	1845,0	1598,5
of which children below 14 years old	77489	78528	54553	62974	59204	53166
per 100 000 children of this age group	2994,6	3041,1	2098,2	2422,1	2290,3	2044,8
<b>Population suffered from anemia, total</b>	77549	112850	82776	110920	113436	105076
per 100 000 population	1167,9	1664,4	1196,2	1674,6	1675,5	1533,9
of which children below 14 years old	25337	23031	23720	27047	24816	25443
per 100 000 children of this age group	979,2	890,0	912,3	1040,3	960,0	978,6

*Source: Ministry of Health Care of the Republic of Tajikistan*

\*) Preliminary data. In earlier publications for 2003 and 2004, data referred to prevalence rate, while the present publication presents data on number of persons on the dispensary books as at the end of period.

Among all population applied to medical centers, endemic goitre accounts for 80% in total number of cases of endocrine system, dyspepsia and metabolic diseases. Decrease in number of cases of endemic goiter is observed for some time past.

The number of cases of anemia is increasing.

#### **4.2.3 Immunization**

The immunization of children in all regions of the Republic is very important measure for prevention of infectious diseases.

**Table 16. Percentage of children immunized against vaccine-controlled diseases in the Republic of Tajikistan**

<i>BCG</i>		<i>General Polio-3</i>		<i>DPT3</i>		<i>Measles-1</i>		<i>Hepatitis B-3</i>	
2004	2005	2004	2005	2004	2005	2004	2005	2004	2005
94,0	93,2	95,6	95,5	95,7	94,5	97,5	96,7	81,6	92,5

*Source: Ministry of Healthcare of the Republic of Tajikistan*

The calculation was made among children subject to immunization by each vaccine according to the vaccination schedule, approved by the Ministry of Healthcare of the Republic of Tajikistan. Children in regions difficult of access not always receive vaccinations due to temperature condition and limited shelf life of vaccines received by Republic as a humanitarian aid. National Immunization Days play significant role in promoting more complete coverage of vaccination among children.

#### 4.2.4 Breastfeeding of children

The *Program on breastfeeding* was a new policy and contributed a lot to introduction of exclusive breastfeeding of new-born children, decrease of their morbidity and mortality.

**Table 17. Breastfeeding of children during first year of life**

	2002	2003	2004	2005
Number of children exclusively breastfed during:				
0-4 months	129165	129798	123488	126338
as percentage of the total number of children aged 1 year in the reporting period	86,6	85,7	87,9	87,1
0- 7 months	107762	114568	102791	94522
as percentage of the total number of children aged 1 year in the reporting period	72,3	75,7	72,3	65,1

*Source: Ministry of Health Care of the Republic of Tajikistan*

#### 4.2.5 Social Protection in the Republic of Tajikistan

From 1 April 2006, in accordance with the Decree of the President of the Republic of Tajikistan No. 1716 of 20 March 2006 “On measures for strengthening of social protection and increase of minimum wages, current official salaries of employees of budget organizations and institutions, as well as pensions and scholarships”:

- the minimum salary and minimum pension to be increased by 66%, amounting to 20 somoni per a month;

- official salary structure and procedures for payment of additional pay for length of service, qualify rank of government employees in government bodies, local executive bodies of State power, salary for military rank to armed forces personnel, staff of internal affairs bodies and other law enforcement bodies, courts, public prosecutions departments to be established from 1 April 2006.

- existing salaries and base wage rates of employees in departments and organizations, financed from the State budget, to be increased from 1 April 2006, as follows:

- employed in science - by 40%; at the same time salary of employees of Academy of Agricultural Sciences of the Republic of Tajikistan and Academy of Pedagogic Sciences of the Republic of Tajikistan to be liken to salary of employees of Academy of Sciences of the Republic of Tajikistan.

- existing salaries of directors and deputy directors of secondary schools, boarding schools, and infant school to be increased by 50%, salary of other persons engaged in education - by 40%; at the same time, the salary of teachers in infant schools to be liken to salary of teachers in primary classes;

- salary of employed in primary health care to be increased in average by 60%; salary of other persons engaged in health care - by 40%;

- salary of employed in social protection sphere - by 40%;

- salary of employed in culture sphere - by 40%;

- salary of employed in other spheres - by 40%.

From 1 April 2006, Presidential scholarships, fellowships were increased by 40%, scholarships in higher and professional education - by 50%.

Labour pensions were increased from 1 April 2006 through applying salary increase ratios

Pensions to single women and widows were increased from 1 April 2006 by 50% of minimum pension

From 1 April 2006, maximum old age pension was established at 180 somoni per a month.

**Table 18: Social benefits by types***somoni*

<i>Types of social benefits</i>	<b>2003</b>	<b>2004</b>	<b>2005</b>
Children-invalids <sup>1</sup>	5,00	6,00	12,00
Invalids from childhood <sup>2</sup>	5,81	7,03	11,89
of which:			
of 1 <sup>st</sup> group	6,25	6,83	13,01
of 2 <sup>nd</sup> group	5,63	7,09	11,63
Invalids due to industrial injuries or occupational disease	18,72	30,94	55,74
of 1 <sup>st</sup> group	16,03	20,17	55,12
of 2 <sup>nd</sup> group	22,25	38,80	61,92
of 3 <sup>rd</sup> group	13,79	19,83	44,11
Invalids due to general disease	19,75	25,80	39,00
of 1 <sup>st</sup> group	20,44	26,61	35,14
of 2 <sup>nd</sup> group	20,18	26,95	40,83
of 3 <sup>rd</sup> group	17,21	20,49	31,78
Elderly citizens (old-age pension)	12,02	15,25	25,02
Elderly citizens in high-mountainous regions <sup>3</sup>	29,71	35,19	53,95
Women born 5 and more children and Mothers - invalids from childhood	9,17	12,44	19,01
Children in case of loss of bread-winner	7,21	9,86	15,94
Orphans <sup>4</sup>	15,62	18,76	25,16

*Source: Ministry of labour and social protection of population*

- 1) Minimum size of disability benefits
- 2) Average size of monthly social benefits
- 3) Persons who worked and lives permanently in Murgab region of GBAO
- 4) Receiving surverior's pensions

As of 1 January 2006, 61142 persons received monthly social benefits, of them 41637 persons (68.1%) were disabled persons. The size of social benefit is liken to minimum old age pension. The average size of benefit in 2005 was 10.70 somoni.

**Table 19. Number of disabled persons registered in social protection bodies**  
*(at the end of each year, persons)*

	2001	2002	2003	2004	2005
Number of disabled persons receiving disability pensions as well as social pensions and benefits, total	114385	116161	118501	118928	125727
per 1000 population	18,1	18,0	18,0	17,6	18,2
<i>including:</i>					
Number of disabled children below 16, receiving social pensions, total	19243	19471	17693	16444	16963
per 10000 children	66,0	66,6	60,2	59,6	60,6

The average size of social benefit to disabled children in 2005 was 11.89 somoni.

## METHODOLOGY

### 1. Methodology of food security analysis

“Food and nutrition security is achieved if adequate food (quantity, safety, quality, social-cultural acceptance) is available and accessible for and satisfactory used and utilized by all individuals at all time to live a healthy and active life”.

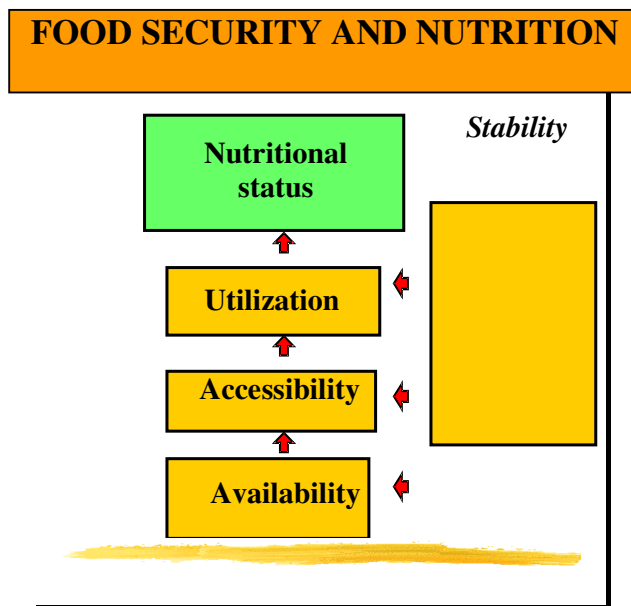
**Availability** physical existence of quantitatively and qualitatively adequate and safe food items.

**Access:** all households and household members have sufficient resources to obtain appropriate food (*through* production, purchase or donation)

**Use and utilization:** adequate knowledge, health and sanitation to enable the human body to digest and utilize that food

**Stability:** continuous ensuring of availability of, access to and appropriate use and utilization of food. If not, individuals will suffer from chronic or transitory food insecurity

For case of reference the four pillars of food and nutrition security are pictured below:



All four dimensions need to be fulfilled if there is to be food and nutrition security. As individuals and households live in a society, the 4 dimensions of FNS need to co-exist at all levels, from the individual and household level (**micro level**), to the community (village, rayon, oblast) level, representing the **meso level**, and the nation and global level

**(macro level).**

To monitor food security it is necessary to select relevant indicators and to measure these indicators at regular intervals.

## **2. Food balance methodology**

Food balances for basic foodstuffs are compiled in natural terms.

In the course of the compilation of the food balance, the closing stocks as of December 31 in one year become the opening stocks on January 1 in the following year. With regard to imports and exports of products, the official data was used, in respect of production preliminary data.

Seed use is calculated on areas sown with agricultural crops as well as actual amount of seeds used for 1 ha. The calculation of lost was made according to the official norms.

In order to determine the number of eggs for the incubation the actual number of poultry offspring as well as norms on the number of chicken from the eggs laid for incubation.

The calculation of the volume of food products consumed by population as well as expenses on animal feeding was based on the data obtained during the survey of 925 households. The calculation of meat consumption also included the meat consumed in the course of observing national traditions (funeral, weddings, religious feasts, etc.)

## Glossary

**The *unemployed*** - people of 16 and more who during period under review had no job (profitable occupation); were in search for a job i.e. applied to public employment offices or used alternative ways of job finding as well as were ready to start working.

***Gross Domestic Product (GDP)*** - a general indicator of economic activity which is calculated in basic and market prices (nominal GDP) and in comparable prices (real GDP).

***Consumer price index on goods and paid services to the population (CPI)*** - characterizes the change in the general price level for goods and services over time. The index measures the correlation of the value of actually set of goods and services during the given period to the value thereof during the basic period.

***Average nominal monthly salary*** is calculated by dividing actually accrued salary fund to the staff and part-time employees by the number used for the calculation of average salary and number of months in a year during corresponding period.

***Average daily per capita calorie intake*** measure the calories in the consumed food products per one household member as well as chemical composition in protein and fats.

***Official unemployment rate*** - the ratio of people officially registered as unemployed to the number of economically active population, expressed in per cent.

### List of abbreviations

GDP	Gross Domestic Product
GBAO	Gorno-Badakhshan Autonomous Oblast
CPI	Consumer price index on goods and paid services to the population
RRS	Regions of republican subordination
MDG	Millennium Development Goals

## Appendix 1

### Review of hydro meteorological conditions on the territory of the Republic of Tajikistan during the first quarter of 2006

#### *Meteorological conditions*

In **January**, the average monthly air temperature was below the mean annual values by 1.5-3.0<sup>0</sup> degrees in valleys and piedmont areas, and above the mean annual values by 1.5-3.5<sup>0</sup> degrees in mountainous regions, and amounted to 0-1<sup>0</sup> degrees in valley areas of regions of the republican subordination and Khatlon oblast, 2.5-3.5<sup>0</sup> degrees below zero in valley regions of Soghd oblast and piedmonts, and 12-17<sup>0</sup> degrees below zero in high mountain areas.

Acute temperature fluctuations were observed during the month. The coldest period was 1-7 January, when night-time temperature in valleys fell to 6-11<sup>0</sup> degrees below zero, and day-time temperature was within -2 + 3<sup>0</sup> degrees. The average daily temperature during this period was by 2-7<sup>0</sup> degrees below the normal. The warmest temperature was registered during 21-27 January, when day-time temperature reached 8-13<sup>0</sup> degrees, and night-time temperature fluctuated from 2-7<sup>0</sup> degrees above zero to 1-6<sup>0</sup> degrees below zero. The average daily temperature during this period was by 1-5<sup>0</sup> degrees above the normal.

Precipitations were frequent: during 16-21 days in valleys, piedmonts and mountains, and 7-14 days in high mountain areas. The amount of precipitation was mainly above the mean annual values (150-300% of the norm). Only in mountains of Soghd oblast, monthly amount of precipitation was below normal: 5-10 mm while the norm is 7-17 mm. On 15 January, heavy snow showers were observed in western part of GBAO (15-20 mm), caused in raise of snow cover depth by 15-20 sm. Heavy downfalls were registered almost on the whole territory of the republic (30-80 mm). Intensive precipitation, mainly snow, were registered also on 31 January (in some places 20-50 mm for a day).

During a month, fogs were observed frequently in valleys and piedmont areas as well as passes. In some regions, increase of wind force was registered.

In **February**, the average monthly air temperature was above the mean annual values by 3.0-5.0<sup>0</sup> degrees and amounted to 6-11<sup>0</sup> degrees in valley areas of regions of the republican subordination and Khatlon oblast, 4-8<sup>0</sup> degrees in valley regions of Soghd oblast and piedmonts, 0-3<sup>0</sup> degrees below zero in mountains, and 7-11<sup>0</sup> degrees below zero in high mountain areas.

The most part of the month was characterized by higher temperature conditions, and only in third decade of the month temporary fall of temperature was registered. During this

period day-time temperature fell by 10-12<sup>0</sup> degrees, and was within 3-6<sup>0</sup> degrees in valleys, while the night-time temperature was within 0-5<sup>0</sup> degrees. Average daily temperature during this period was below the normal by 1-6<sup>0</sup> degrees. During the rest part of the month, maximum air temperature in 16-21<sup>0</sup> degrees in valleys of the regions of republican subordination and Khatlon oblast, and night-time temperature fluctuated from 00 to 15<sup>0</sup> degrees. In Soghd oblast air temperature was within 8-13<sup>0</sup> degrees at day-time and from 3<sup>0</sup> degrees below zero to 7<sup>0</sup> degrees above zero at night-time. In mountain regions, daytime temperature during the most part of the month was above zero (0-5<sup>0</sup> degrees), but at nights it fluctuated from 10 to 12<sup>0</sup> degrees below zero.

Monthly amount of precipitations, registered mainly during the second and third decades of the month, was within and above the mean annual values. The heaviest precipitation were registered during 17-19 and 23-24 February (30-46 mm). In some days fogs were observed in valleys, piedmont areas and passes. In some regions, increase of wind force up to 15-22 m/s was registered.

In **March**, the average monthly air temperature on the most part of the republic was above normal by 2-4<sup>0</sup> degrees and amounted to 11-13.5<sup>0</sup> degrees in valley areas of regions of the republican subordination and Khatlon oblast, 7-9<sup>0</sup> degrees in piedmonts, 1<sup>0</sup> degrees below zero in mountains, and 5-10<sup>0</sup> degrees below zero in high mountain areas.

The most part of the month was characterized by higher temperature conditions, and only in third decade of the month temporary fall of temperature was registered. The day-time temperature fell by 15-20<sup>0</sup> degrees and didn't exceed 2-7<sup>0</sup> degrees. Average daily temperature during this period was below normal by 1-6<sup>0</sup> degrees.

Precipitations were seldom (6-11 days) and not very intensive. Only at the end of the month heavy rains were registered almost on the whole territory of the republic (20-44 mm).

Thunderstorms and increase of wind force up to 17-22 m/s were registered frequently in some regions of the republic. Fogs were observed at the end of the month in valleys, piedmont areas and passes.

### ***Hydrological conditions***

During **January**, the gradual decrease of water content in rivers of the republic was registered. Only on 27, 28 January, small-scale rain floods were registered in Yahsu, Kyzylsu rivers, and rivers of southern slope of Gissar range. As before, average monthly water discharge of the most rivers of the republic was above the norm by (103-150%). As compared to the similar period of the previous year, water content of rivers was below and within the level of the previous year (70-105%).

During the month, the level of Sarez lake decreased by 90sm and amounted to 2305 sm. Nurek reservoir capacity decreased by 1.042 mln.m<sup>3</sup> and amounted to 7274 mln.m<sup>3</sup>, which is less than the level of the previous year by 0.145 mln.m<sup>3</sup>. The capacity of Kairakum reservoir increased by 0.324 mln.m<sup>3</sup> and reached 3478 mln.m<sup>3</sup> which is higher than the level of the previous year by 0.393.

During second and third decades of **February**, increase of water content in Yahsu, Kyzylsu rivers, and rivers of southern slope of Gissar range was observed. Maximum values of water discharge in Yahsu, Kyzylsu and Varzob rivers were 2-3 times higher of the maximum values observed during this season. First and third decades of the month were characterized by decrease of flood discharge observed in the second decade. As before, monthly water discharge of the most rivers of the republic was above the norm (108-300%) and above last years values (100-170%).

During the month, the level of Sarez lake decreased by 95 sm and amounted to 2210 sm (which is higher by 372 sm than the level of the previous year). Nurek reservoir capacity decreased by 0.721 mln.m<sup>3</sup> and amounted to 6553 mln.m<sup>3</sup>, which is higher than the level of the previous year by 0.154 mln.m<sup>3</sup>. The capacity of Kairakum reservoir during the month remained unchanged at the level of 3482 mln.m<sup>3</sup> which is higher than the level of the previous year by 0.063.

During **March** increase of water content in the rivers of the republic, mainly in the rivers of Gissar range and southern part of the republic, was observed. Average monthly water discharge of the most rivers was below the last year values by 46-80%.

During the month, the level of Sarez lake decreased by 84 sm and amounted to 2123 sm.

### ***Review of avalanches and mudflows***

For **January**, mudflows were not forecasted and registered. 5 avalanches with total duration of 12 days were forecasted (the forecast was proved by 100%).

In January there were two dangerous, in terms of avalanches, periods. The first period was from 14 to 20 January. During this period, avalanches were coming down from heads of the rivers originating on southern slope of Gissar range and western Pamir: on 16 January avalanche blocked Pamir high road on 16<sup>th</sup> km from Horog. No victims or destructions were registered. The second period from 26 to 31 January was more dangerous. On 27 January, routing taxi was covered by snow-slide in Haspo village of Tehavr Djamoat (Vanch regions), one person dead. On 29 January in result of avalanching, 10 sheep and goats and 2 cattle perished in avalanche station Navabad on Western Pamir. On 30-31 January as a result of heavy snowing, many avalanches were registered in Varzob river upstream. As a result, one power transmission line was destroyed and communication with avalanche station Maihura was lost for a day. Another

avalanching occurred on the station destroyed several trees. The road Dushanbe - Ziddi was blocked by avalanches in many places. Section from 150 to 214 km on the road Dushanbe - Horog in Obihingoy valley was overwhelmed by avalanches. Kalayhumb-Horog road, Pamir highway and Horog-Ishkashim road on Western Pamir were blocked by avalanches in many places. 7 houses in outskirts of Djirgital were destroyed by avalanche on 31 January.

No mudflows were observed and forecasted in **February**.

4 avalanches with total duration of 11 days were forecasted (the forecast was proved by 100%). All avalanches consisted of dry fresh snow. Avalanches blocked for a short period of time Dushanbe - Ziddi, Dushanbe-Tavildara, Horog - Ishkashim roads and Pamir highway. No victims or destructions were registered.

1 avalanche with total duration of 2 days was forecasted for the beginning of **March**. Avalanches occurred on Varzob river and slope of Anzob pass.

On 9 March avalanches were registered near Irht station (basin of Sarez lake). Since precipitations were not registered, it can be assumed that avalanches were caused by earthquake. On 20 March avalanches were observed on Pamir highway. The last two cases were not forecasted, and therefore, validity of forecasts for March was 33%.

One warning regarding mudflow was given from the end of March (with duration of 1 day). The forecast was proved by 100% - mudflow occurred on Yahsu river.

No victims or destructions were registered.

## Appendix 2

### PRSP Indicators in the Republic of Tajikistan

Sector	Goals	Indicators	Indicators of SCS					
			1990 <sup>0</sup>	1999	2003	2004	2005 <sup>1</sup>	1q. 2006
Complete PRS	Increase real incomes in the country	GDP per capita (USD)	-	178,2	236,7	309,2	337,2	X
	Improved level of living of poorest stratum of population	Employment rate among able-bodied population (%)	-	55,6	51,7	55,2	...	..
Macroeconomic management	Sequent macroeconomic management oriented to reaching economic growth required for increase of population incomes	Real GDP growth (%)	98,4*	103,7	110,2	110,6	106,7	106,2
		Inflation rate (%)	-	26,3	13,7	5,7	7,1	6,2
		Credits provided by bank sector (as percentage of GDP)	...	3,6	3,3	7,4	7,3	8,9
		Share of private sector in GDP (%)	-	29,3	39,1	39,8	...	...
		Direct foreign investment (in % to GDP)	x	0,2	1,7	1,1	2,4	...
		State revenues (in % to GDP)	46,8	18,6	17,3	17,9	18,1	23,7
		Public expenditures (in % to GDP)	43,4	17,6	16,2	17,7	19,6	19,9
		Public expenditures for health sector (in % to GDP)	4,8	1,0	0,9	0,9	1,1	1,3
		Public expenditures for education (in % to GDP)	10,4	2,1	2,41	2,7	3,5	3,9
		Public expenditures for social protection and insurance <sup>3)</sup> (in % to GDP)	-	0,2 <sup>2)</sup>	2,3	2,6	3,3	4,2
		Public expenditures for environment protection (in % to GDP)	0,03	-	0,04	0,05	0,04	0,05
		Public expenditures for agriculture (in % to GDP)			0,5	0,5	0,5	0,5
		Public expenditures for irrigation (in % to GDP)			0,2	0,1	0,12	0,13
		Public expenditures for infrastructure (transport and communication) <sup>4)</sup> (in % to GDP)			1,2	1,4	1,1	1,2
		Average monthly salary in public sector as compared to private sector (%)		64,5	146,9	126,5	166,6	...
		Registered unemployment rate		3,0	2,4	2,2	2,1	2,4
Population incomes, according to households' survey, per one household member (somon)			35,38	43,42	55,48	...		
Reforms in public administration	Creation of effective judicial service	Average salary of judge (somon)		20,9	50,34	54,36	91,16	...
Social protection	Guaranteed incomes of poor	Number of employed per one pensioner (persons)	2,2	3,10	3,53	3,59	3,84	
		Average monthly pension (somon)	x	3,53	13,07	16,92	27,51	

	populations, ensuring effectiveness of targeted assistance	Number of pensioners receiving disability pension (thsd.persons)	48,0	67,8	78,2	79,1	84,1		
Education	Increase of literacy rate and level of general education of population	Coverage by primary education ratio [7-10 years old (1-4 forms)]	90,9	97,4	99,6	99,2	99,0		
		Coverage by basic education ratio [7-15 years old (1-9 forms)]	94,8	89,1	95,4	95,4	95,6		
		Coverage by secondary education ratio [16-17 years old (10-11 forms)]	x	35,7	42,0	46,1	46,4		
	Ensuring access to primary and secondary education	Number of pupils per 1 teacher							
		Schools-	14	15,1	16,2	17	17		
		institutions of higher educations-	12,8	13,4	16,0	16,2	17,4		
		specialised secondary educational establishment -	11,5	11	11,1	11,0	13		
	Eliminate gender disparity in access to education	Proportion of boys and girls in primary school:	boys	51,2	52,6	52,0	51,8	52,0	
			girls	48,8	47,4	48,0	48,2	48,0	
		in secondary school:	boys	49,8	59,6	60,5	60,7	51,2	
girls			50,2	40,4	39,5	39,3	38,8		
Health care		Improved quality of public health services and improved access of poor population to health services	Maternal mortality	42,9	44,2 <sup>1</sup>	37,7 <sup>1</sup>	39,0 <sup>1</sup>	40,1	
			Infant mortality	43,3	...	...	...	...	
	Mortality of children under 5 years old		65,0	...	...	...	...		
	Share of births delivered with assistance of skilled medical personnel, %		-	66,6	71,4	75,1	76,2		
	Percentage of children aged 1 year who received DPT vaccinations		86,8	98,7	96,3	96,0	94,5		
	Number of HIV cases		-	-	119	317	506	544	
	Number of tuberculosis cases per 100000 population		44,4	42,1	66,5	66,6	60,1	12,0	
	Number of malaria cases per 100000 population		-	222,0	71,6	48,4	29,1	0,3	
	Number of typhoid fever and paratyphoid ABC per 100000 population		48,0	122,0	48,9	38,5	29,4	3,4	
	Number of measles cases per 100000 population		130,4	3	33	0,3	0	0	
Agriculture	Ensure effective use	Share of population engaged in agricultural sector, %	-	64,4	67,6	66,6	...		

and Irrigation	of land and water, as well as fair access of poor population to land and water	Wages and salary in agricultural sector, somoni	-	5,38	27,00	35,63	40,08	27,42
Development of private sector	Create favorable conditions for private sector functioning	Receipt of funds from privatization by state budget, mln.somoni	-	17,7	21,7	35,9	43,5	
Infrastructure	Ensure access to steady and satisfactory infrastructure public services for the poorest stratum of population	Number of telephone lines per 100 residents	-	3,51	3,65	3,83	3,29	3,32
		Number of mobile (cell) phones per 100 residents	-	...	0,73	2,5	5,9	7,1
		Number of Internet users per 1000 inhabitants	-	...	0,2	0,3	2,8	0,55
		Share of population having continuous access to potable water (urban and rural)	-	44%	-	-	-	
Environment and tourism	Eliminate serious environmental threats to population health and safety of ecosystem	CO <sub>2</sub> emission per capita, and use of destroying chlorine and fluorine containing compounds (metric tons of ozone depleters)	-	0,007	0,002	0,001	0,001	
		Promote establishing of positive image of the country as well as development of tourism	-	/-	/887	/401	/318	

0 – reference year for MDG

1 – preliminary data of SCS

<sup>2</sup> - social security

<sup>3</sup> - social protection and social insurance

<sup>4</sup> – data on energy are reflected in item on «данные по энергетике отражены в статье «Fuel and energy complex»

\* - for 1992

**APPENDIX 3. CHANGES IN AVERAGE WHOLESALE PRICES (SUPPLY) IN TAJIKISTAN**

(somoni / kg)

Regions	I quarter			II quarter		III quarter		IV quarter				
	2004	2005	2006	2004	2005	2004	2005	2004	2005			
	<b>Potatoes</b>											
GBAO	-	-	-		0,30	0,30		0,27	0,30		0,29	0,40
Sogd Oblast	0,16	0,12	0,25		0,26	0,13		0,11	0,10		0,12	0,31
Khatlon Oblast	0,5	0,43	0,38		0,27	0,30		0,18	0,43		0,17	0,31
RRS	0,50	0,30	0,64		0,26	0,29		0,19	0,37		0,20	0,40
<b>Average in the Republic</b>	0,18	0,13	0,28		0,27	0,19		0,17	0,29		0,18	0,36
	<b>Milk</b>											
GBAO	0,50	-	-		0,50	0,50		0,45	-		0,44	-
Sogd Oblast	0,30	0,39	0,45		0,30	0,38		0,28	0,37		0,27	0,37
Khatlon Oblast	0,19	0,17	0,24		0,24	0,19		0,20	0,21		0,18	0,23
RRS	0,44	0,61	0,74		0,44	0,57		0,44	0,58		0,43	0,61
<b>Average in the Republic</b>	0,32	0,42	0,51		0,32	0,41		0,31	0,41		0,29	0,41
	<b>Wheat</b>											
GBAO	0,45	-	0,44		0,45	-		0,45	0,60		0,45	0,60
Sogd Oblast	0,25	0,39	0,43		0,30	0,38		0,26	0,30		0,30	0,37
Khatlon Oblast	0,46	0,62	0,54		0,43	0,29		0,28	0,28		0,32	0,30
RRS	0,35	0,54	0,48		0,36	0,46		0,33	0,60		0,36	0,46
<b>Average in the Republic</b>	0,32	0,42	0,44		0,33	0,34		0,28	0,31		0,33	0,36

**APPENDIX 4. CHANGES IN AVERAGE CONSUMER PRICES IN TAJIKISTAN IN 2004-2006 (somoni / kg)**

			<b>I quarter</b>		
	<b>2004</b>	<b>2005</b>	<b>2004</b>	<b>2005</b>	<b>2006</b>
	<b>Potatoes</b>				
Dushanbe	0,46	0,77	0,55	0,62	1,25
Sogd Oblast	0,28	0,53	0,32	0,32	1,29
Khatlon Oblast	0,43	0,74	0,58	0,62	1,25
<b>Average in the Republic</b>	0,39	0,68	0,48	0,52	1,26
	<b>Milk</b>				
Dushanbe	1,16	1,44	1,15	1,37	1,8
Sogd Oblast	0,48	0,60	0,45	0,60	0,71
Khatlon Oblast	0,53	0,53	0,50	0,52	0,68
<b>Average in the Republic</b>	0,72	0,86	0,70	0,83	1,06
	<b>Flour of 1<sup>st</sup> grade</b>				
Dushanbe	1,04	1,04	1,04	1,05	1,00
Sogd Oblast	0,91	0,92	0,90	0,95	0,90
Khatlon Oblast	1,06	1,04	1,09	1,05	0,99
<b>Average in the Republic</b>	1,00	1,00	1,01	1,02	0,96
	<b>Wheat</b>				
Dushanbe	0,64	0,74	0,60	0,65	0,75
Sogd Oblast	0,52	0,56	0,47	0,59	0,48
Khatlon Oblast	0,58	0,66	0,53	0,70	0,65
<b>Average in the Republic</b>	0,58	0,65	0,53	0,65	0,62
	<b>Rice</b>				
Dushanbe	1,55	2,24	1,39	1,67	2,57
Sogd Oblast	1,32	1,91	1,26	1,44	2,23
Khatlon Oblast	1,32	1,94	1,25	1,44	2,23
<b>Average in the Republic</b>	1,39	2,03	1,30	1,52	2,34
	<b>Sugar</b>				
Dushanbe	1,54	1,68	1,44	1,53	2,20
Sogd Oblast	1,57	1,67	1,41	1,54	2,18
Khatlon Oblast	1,60	1,67	1,47	1,53	2,18
<b>Average in the Republic</b>	1,57	1,68	1,44	1,54	2,19

			<b>I quarter</b>		
	<b>2004</b>	<b>2005</b>	<b>2004</b>	<b>2005</b>	<b>2006</b>
	<b>Onions</b>				
Dushanbe	0,44	0,49	0,58	0,64	0,72
Sogd Oblast	0,28	0,30	0,28	0,34	0,38
Khatlon Oblast	0,42	0,47	0,56	0,65	0,68
<b>Average in the Republic</b>	0,38	0,42	0,47	0,54	0,60
	<b>Cotton oil</b>				
Dushanbe	2,78	2,81	2,75	2,82	2,80
Sogd Oblast	2,88	2,75	2,79	2,82	2,55
Khatlon Oblast	2,55	2,61	2,52	2,60	2,56
<b>Average in the Republic</b>	2,74	2,71	2,69	2,74	2,64
	<b>Mutton</b>				
Dushanbe	8,35	8,40	8,30	8,25	9,00
Sogd Oblast	8,41	8,60	8,43	8,43	9,42
Khatlon Oblast	7,65	7,63	7,49	7,67	8,13
<b>Average in the Republic</b>	8,13	8,21	8,07	8,12	8,85
	<b>Beef</b>				
Dushanbe	7,00	7,63	7,00	7,00	8,50
Sogd Oblast	6,38	6,61	6,43	6,47	7,30
Khatlon Oblast	6,42	6,59	6,44	6,40	7,02
<b>Average in the Republic</b>	6,60	6,94	6,62	6,62	7,61
	<b>Chicken meet</b>				
Dushanbe	6,24	6,22	6,22	6,22	6,38
Sogd Oblast	5,13	5,89	5,50	5,64	6,22
Khatlon Oblast	6,39	6,33	6,37	6,33	6,59
<b>Average in the Republic</b>	5,92	6,15	6,03	6,06	6,33
	<b>Eggs (10 pieces)</b>				
Dushanbe	2,83	3,13	2,53	3,03	2,80
Sogd Oblast	2,41	2,72	2,23	2,82	2,88
Khatlon Oblast	2,74	3,04	2,66	3,00	2,65
<b>Average in the Republic</b>	2,66	2,97	2,47	2,95	2,87

**APPENDIX 5. FOOD BALANCE OF THE REPUBLIC OF TAJIKISTAN for 2002-2005**

	Basic foodstuffs (physical quantities)	Bread and bread products in grain, thousand tons				Potatoes fresh, thousand tons				Vegetables and melons fresh, thousand tons				Fruits and berries fresh, thousand tons				Sugar and confectionery, in sugar, thousand tons			
		2002	2003	2004	2005	2002	2003	2004	2005	2002	2003	2004	2005	2002	2003	2004	2005	2002	2003	2004	2005
1.	Stocks at the beginning of the period	221,0	223,2	215,7	121,8	21,0	87,8	234,9	264,7	53,4	15,9	95,0	21,6	46,3	32,3	13,0	3,3	4,0	10,4	47,4	20,6
2.	Food production in the country (+)	544,6	660,2	679,0	805,0	356,7	473,3	527,2	555,1	584,9	721,5	829,8	888,8	228,6	117,3	237,6	237,6	0,3	0,4	1,6	1,9
3.	Food imports (+)	465,4	353,3	276,8	725,5	0,2	0,9	0,6	0,5	0,5	0,3	2,4	39,7	0,9	0,3	4,8	5,6	59,7	95,8	109,1	123,2
	<b>Availability (1-3) (+)</b>	1231,0	1236,7	1171,5	1652,3	377,9	562,0	762,7	820,3	638,8	737,7	927,2	950,1	275,8	149,9	255,4	246,5	64,0	106,6	158,1	145,7
4.	Used for seed (-)	60,8	60,0	107,2	140	90,4	104,0	162,2	84,0	-	-	-	-	-	-	-	-	-	-	-	-
5.	Used as fodder (-)	-	-	-	4,0	-	-	-	-	-	-	-	-	-	-	-	-	-	-	-	-
6.	Losses (-)	11,0	12,0	12,1	5,0	19,0	25,0	30,0	31,0	63,0	78,0	100,0	1,7	14,0	7,0	9,1	1,2	-	-	-	-
7.	Food exports (-)	-	0,3	-	0,3	-	0,3	0,3	0,3	36,5	44,2	90,6	37,5	18,5	55,1	57,9	37,6	-	-	-	0,028
8.	Availability for consumption by the population (-)	891,0	908,7	927	891,4	180,4	197,8	304,5	300,0	523,4	520,5	715,0	717,8	211,0	74,8	172,4	205,2	53,6	59,2	109,6	59,8
9.	Other utilization (-)	45	40,0	3,4	1,2	-	-	1,0	1,2	-	-	-	0,9	-	-	12,7	-	-	-	27,9	4,0
	<b>Consumption (4-9) (-)</b>	1007,8	1021	1049,7	1041,9	289,8	327,1	498,0	416,5	622,9	642,7	905,6	757,9	243,5	136,9	252,1	244,0	53,6	59,2	137,5	63,8
10	Stocks at the end of the period	223,2	215,7	121,8	610,4	88,1	234,9	264,7	403,8	15,9	95,0	21,6	192,2	32,3	13,0	3,3	2,5	10,4	47,4	20,6	81,9

	Basic foodstuffs (physical quantities)	Meat and meat products in carcass weight, thousand tons				Milk and dairy products, in milk, thousand tons				Eggs, million				Vegetable oil, thousand tons				Fish and fish products, tons			
		2002	2003	2004	2005	2002	2003	2004	2005	2002	2003	2004	2005	2002	2003	2004	2005	2002	2003	2004	2005
1.	Stocks at the beginning of the period	1,0	0,2	8,7	0,6	-	1,9	0,6	0,6	-	1,0	3,3	1,0	0,2	0,7	0,9	5,0	-	11,0	11,0	6,7
2.	Food production in the country (+)	39,4	49,1	48,2	53,5	416,8	459,1	489,5	533,0	46,0	57,1	77,7	98,7	31,3	36,0	28,2	22,9	324	234	146,7	178,5
3.	Food imports (+)	1,2	3,6	6,2	12,4	0,6	0,8	1,6	12,4	11,0	43,2	48,0	78,4	15,4	1,2	36,1	56,0	77	200	173	269,0
	<b>Availability (1-3) (+)</b>	41,6	52,9	63,1	66,5	417,4	461,8	491,7	546	57,0	101,3	129,0	178,1	46,9	37,9	65,2	83,9	401	445	330,7	454,2
4.	Used for seed (-)	-	-	-	-	-	-	-	-	-	-	-	-	-	-	-	-	-	-	-	-
5.	Used as fodder (-)	-	-	-	-	-	-	-	-	-	-	-	-	-	-	-	-	-	-	-	-
6.	Losses (-)	-	-	-	-	-	-	-	-	-	-	-	-	-	-	-	-	-	-	-	-
7.	Food exports (-)	-	-	-	-	-	-	0,1	-	-	-	-	-	-	-	-	0,2	-	-	-	-
8.	Availability for consumption by the population (-)	41,4	44,2	62,5	63,2	415,5	461,2	489,0	543,5	56,0	98,0	127,2	176,5	46,2	37,0	60,2	69,8	390,0	434	324,0	449,3
9.	Other utilization (-)	-	-	-	-	-	-	2,0	1,6	-	-	0,8	0,4	-	-	-	3,5	-	-	-	-
	<b>Consumption (4-9) (-)</b>	41,4	44,2	62,5	63,2	415,5	461,2	491,1	545,1	56,0	98,0	128,0	176,9	46,2	37,0	60,2	73,5	390,0	434	324,0	449,3
10.	Stocks at the end of the period	0,2	8,7	0,6	3,3	1,9	0,6	0,6	0,9	1,0	3,3	1,0	1,2	0,7	0,9	5,0	10,4	11,0	11,0	6,7	4,9

**FOOD BALANCE OF THE REPUBLIC OF TAJIKISTAN for 2005, by quarters**

	Basic foodstuffs (physical quantities)	Bread and bread products in grain, thousand tons				Potatoes fresh, thousand tons				Vegetables and melons fresh, thousand tons				Fruits and berries fresh, thousand tons				Sugar and confectionery, in sugar, thousand tons			
		I q.	II q.	III q.	IV q.	I q.	II q.	III q.	IV q.	I q.	II q.	III q.	IV q.	I q.	II q.	III q.	IV q.	I q.	II q.	III q.	IV q.
1.	Stocks at the beginning of the period	121,8	65,4	271,1	638,7	264,7	101,2	137,9	293,3	21,6	2,0	6,0	248,0	3,3	0,8	0,8	53,7	20,6	13,5	37,2	67,8
2.	Food production in the country (+)	-	174	439,0	192,0	-	73,9	236,6	244,6	0,4	89,6	516,5	282,3	-	14,6	115,0	109,4	0,4	0,8	0,7	-
3.	Food imports (+)	100,5	257,7	154,9	222,4	-	0,2	-	0,3	0,2	0,7	-	38,8	1,9	-	0,5	3,2	18,5	33,1	42,9	28,7
	<b>Availability (1-3) (+)</b>	222,3	497,1	865,0	1053,1	264,7	175,3	374,5	538,2	22,2	92,3	522,5	569,1	5,2	15,4	116,3	166,3	39,5	47,4	80,8	96,5
4.	Used for seed (-)	80,0	-	-	60	80,0	-	-	4,0	-	-	-	-	-	-	-	-	-	-	-	-
5.	Used as fodder (-)	-	-	-	-	-	-	-	-	-	-	-	-	-	-	-	-	-	-	-	-
6.	Losses (-)	-	-	-	5,0	7,0	-	1,0	23,0	1,7	-	-	-	0,1	0,1	-	1,0	-	-	-	-
7.	Food exports (-)	0,2	0,1	-	-	0,2	-	-	0,1	2,7	3,0	31,8	-	-	-	37,6	-	-	0,028	-	-
8.	Availability for consumption by the population (-)	76,4	225,6	226,0	363,4	76,0	37,1	79,9	107,0	15,8	83,3	242,7	376,0	4,3	14,5	25,0	161,4	25,0	9,2	12,0	13,6
9.	Other utilization (-)	0,3	0,3	0,3	0,3	0,3	0,3	0,3	0,3	-	-	-	0,9	-	-	-	-	1,0	1,0	1,0	1,0
	<b>Consumption (4-9) (-)</b>	156,9	226,0	226,3	428,7	163,5	37,4	81,2	134,4	20,2	86,3	274,5	376,9	4,4	14,6	62,6	162,4	26,0	10,2	13,0	14,6
10.	Stocks at the end of the period	65,4	271,1	638,7	624,4	101,2	137,9	293,3	403,8	2,0	6,0	248,0	192,2	0,8	0,8	53,7	3,9	13,5	37,2	67,8	81,9

	Basic foodstuffs (physical quantities)	Meat and meat products in carcass weight, thousand tons				Milk and dairy products, in milk, thousand tons				Eggs, million				Vegetable oil, thousand tons				Fish and fish products, tons			
		I q.	II q.	III q.	IV q.	I q.	II q.	III q.	IV q.	I q.	II q.	III q.	IV q.	I q.	II q.	III q.	IV q.	I q.	II q.	III q.	IV q.
1.	Stocks at the beginning of the period	0,6	0,5	0,6	1,5	0,6	0,6	0,6	0,8	1,0	0,5	0,5	0,3	5,0	1,0	1,0	2,4	6,7	0,7	0,5	3,7
2.	Food production in the country (+)	9,6	9,3	14,6	20,0	99,2	119,3	141,6	172,9	22,2	24,3	26,6	25,6	8,0	2,8	5,0	7,1	-	82	42,4	54,1
3.	Food imports (+)	3,3	2,0	2,3	4,8	0,3	2,4	-	9,7	17,8	11,4	15,3	<sup>33,9</sup>	8,2	12,7	12,6	22,5	81	14	82,8	91,2
	<b>Availability (1-3) (+)</b>	13,5	11,8	17,5	26,3	100,1	122,3	142,2	183,4	41,0	36,2	42,4	59,8	21,2	16,5	18,6	32,0	87,7	96,7	125,7	149,0
4.	Used for seed (-)	-	-	-	-	-	-	-	-	-	-	-	-	-	-	-	-	-	-	-	-
5.	Used as fodder (-)	-	-	-	-	-	-	-	-	-	-	-	-	-	-	-	-	-	-	-	-
6.	Losses (-)	-	-	-	-	-	-	-	-	-	-	-	-	-	-	-	-	-	-	-	-
7.	Food exports (-)	-	-	-	-	-	-	-	-	-	-	-	-	-	-	0,2	-	-	-	-	-
8.	Availability for consumption by the population (-)	13,0	11,2	16,0	23,0	99,0	121,4	141,0	182,1	40,4	35,6	42,0	58,9	16,7	15,5	16,0	21,6	87,0	96,2	122,0	144,1
9.	Other utilization (-)	-	-	-	-	0,5	0,3	0,4	0,4	0,1	0,1	0,1	0,1	0,1	3,5	-	-	-	-	-	-
	<b>Consumption (4-9) (-)</b>	13,0	11,2	16,0	23,0	99,5	121,7	141,4	182,5	40,5	35,7	42,1	58,6	20,2	15,5	16,2	21,6	87,0	96,2	122,0	144,1
10.	Stocks at the end of the period	0,5	0,6	1,5	3,3	0,6	0,6	0,8	0,9	0,5	0,5	0,3	1,2	1,0	1,0	2,4	10,4	0,7	0,5	3,7	4,9

**FOOD BALANCE OF THE REPUBLIC OF TAJIKISTAN for 2006, by quarters**

	Basic foodstuffs (physical quantities)	Bread and bread products in grain, thousand tons				Potatoes fresh, thousand tons				Vegetables and melons fresh, thousand tons				Fruits and berries fresh, thousand tons				Sugar and confectionery, in sugar, thousand tons			
		I q.	II q.	III q.	IV q.	I q.	II q.	III q.	IV q.	I q.	II q.	III q.	IV q.	I q.	II q.	III q.	IV q.	I q.	II q.	III q.	IV q.
1.	Stocks at the beginning of the period	620,4				403,8				192,2				2,5				81,9			
2.	Food production in the country (+)	-				-				0,5											
3.	Food imports (+)	229,2				-				0,1				5,0				22,9			
	<b>Availability (1-3) (+)</b>	849,6				403,8				192,8				7,5				104,8			
4.	Used for seed (-)	81,0				-															
5.	Used as fodder (-)	-				-															
6.	Losses (-)	-				24,0				11,6											
7.	Food exports (-)	-				-															
8.	Availability for consumption by the population (-)	251,6				52,6				128,7				7,5				13,6			
9.	Other utilization (-)	-				-								7,5				0,4			
	<b>Consumption (4-9) (-)</b>	332,6				76,6				140,3								14,0			
10.	Stocks at the end of the period	517,0				327,2				52,5								90,8			

	Basic foodstuffs (physical quantities)	Meat and meat products in carcass weight, thousand tons				Milk and dairy products, in milk, thousand tons				Eggs, million				Vegetable oil, thousand tons				Fish and fish products, tons			
		I q.	II q.	III q.	IV q.	I q.	II q.	III q.	IV q.	I q.	II q.	III q.	IV q.	I q.	II q.	III q.	IV q.	I q.	II q.	III q.	IV q.
1.	Stocks at the beginning of the period	3,3				0,9				1,2				10,4				4,9			
2.	Food production in the country (+)	15,4				101,5				24,1				8,0							
3.	Food imports (+)					0,6				36,8				9,5							
	<b>Availability (1-3) (+)</b>	18,7				103,0				62,1				27,9				4,9			
4.	Used for seed (-)																				
5.	Used as fodder (-)																				
6.	Losses (-)																				
7.	Food exports (-)																				
8.	Availability for consumption by the population (-)	13,6				78,0				33,2				19,5				4,9			
9.	Other utilization (-)					1,0															
	<b>Consumption (4-9) (-)</b>	13,6				79,0				33,2				19,5				4,9			
10.	Stocks at the end of the period	5,1				24,0				28,9				8,4							

**APPENDIX 6. MONEY INCOMES, EXPENDITURES AND CONSUMPTION OF HOUSEHOLDS, IN THE REPUBLIC OF TAJIKISTAN,  
BY DECILE POPULATION GROUPS (according to sampling household budget survey)**

	All households				of which:							
					Urban				Rural			
	the poorest 10% of population		the richest 10% of population		the poorest 10% of population		the richest 10% of population		the poorest 10% of population		the richest 10% of population	
	2004	2005	2004	2005	2004	2005	2004	2005	2004	2005	2004	2005
<b>Money incomes , somoni</b>	12,86	11,54	81,63	108,30	19,63	20,95	95,59	168,88	10,19	9,68	76,06	83,77
of which:												
labor incomes	8,47	8,19	32,39	52,32	15,90	17,78	68,91	102,34	5,53	6,46	18,26	27,92
social payments (pension, scholarships, benefits and other payments)	0,79	1,10	1,53	2,82	1,21	1,12	3,27	4,67	0,62	1,04	0,85	1,66
receipts from sales of agricultural products, feeds, livestock, etc.	2,11	1,14	11,66	18,00			0,48	2,14	2,95	1,32	15,94	26,64
<b>Expenditures , somoni</b>	13,48	17,94	74,69	118,28	19,64	24,39	93,42	171,22	11,05	16,76	67,30	96,60
of which:												
consumer expenditures	12,97	16,98	63,20	86,00	18,61	23,71	80,87	108,62	10,75	15,74	56,23	75,33
purchase of foods, including public catering	10,47	12,68	30,38	40,92	16,13	19,89	45,03	58,25	8,28	11,30	24,66	33,12
purchase of nonfoods for personal consumption	1,37	2,52	23,63	30,57	1,11	1,70	20,61	31,63	1,48	2,74	24,73	26,69
services	1,12	1,75	8,85	13,58	1,36	2,10	14,93	18,02	1,02	1,68	6,48	11,50
purchase of alcoholic beverages	0,01	0,03	0,34	0,93	0,01	0,01	0,30	0,78	0,01	0,03	0,36	1,02
<b>Consumption of main foodstuffs, per 1 household member, kg</b>												
Bread and bread products	9,96	11,37	15,13	14,96	6,93	7,81	10,95	11,23	11,16	12,25	16,71	17,00
Potatoes	2,00	1,94	4,10	3,42	2,00	1,74	4,27	3,55	2,00	2,04	4,04	3,38
Vegetables and melons	3,66	4,26	10,21	10,22	2,88	3,37	7,65	9,78	3,97	4,54	11,17	10,51
Fruits and berries, including dry	1,63	0,53	1,22	1,27	0,51	0,37	1,53	1,45	2,07	0,59	0,95	1,16
Meat and meat products	0,24	0,38	1,12	1,30	0,26	0,28	1,53	1,54	0,23	0,32	0,96	1,16
Milk and dairy products	1,98	2,74	6,46	6,62	1,04	1,33	5,39	3,93	2,34	3,03	6,86	7,04
Fish and fish products			0,02	0,01			0,07	0,05				
Eggs (pieces)	1	2	3	4	1	1	4	4	1	2	3	4
Sugar and confectionery	0,59	0,63	1,17	1,08	0,49	0,53	1,34	1,27	0,62	0,66	1,10	1,02
Vegetable oil and other fats	0,67	0,69	1,32	1,24	0,62	0,65	1,21	1,31	0,69	0,77	1,36	1,23

**APPENDIX 7. DISTRIBUTION OF HOUSEHOLDS AND POPULATION IN THEM BY PER CAPITA INCOME  
IN THE REPUBLIC OF TAJIKISTAN IN 2004-2005** (according to sampling household budget surveys, in %)

	<b>Distribution by money income in 2004</b>			
	<b>Total income</b>		<b>Disposable income</b>	
	<b>Number of households surveyed</b>	<b>Population in them</b>	<b>Number of households surveyed</b>	<b>Population in them</b>
Total number	925	5394	925	5394
Including those with monthly per capita income (somon):				
below 5,00	8,7	9,3	8,9	9,5
5,01-8,00	6,6	7,7	6,8	7,9
8,01-11,00	8,3	9,6	8,5	9,9
11,01-14,00	8,1	9,3	8,4	9,7
14,01-17,00	8,7	10,2	8,9	10,2
17,01-20,00	8,6	9,3	8,8	9,5
20,01-23,00	7,3	7,5	7,4	7,6
23,01-26,00	7,1	6,8	6,9	6,7
26,01-29,00	5,4	5,1	5,6	5,2
29,01-32,00	4,8	4,3	4,8	4,3
32,01-35,00	3,9	3,4	3,6	3,2
35,01-38,00	3,6	3,1	3,7	3,2
38,01-41,00	3,0	2,5	2,8	2,2
41,01-44,00	2,1	1,5	2,0	1,6
44,01-47,00	2,2	1,7	2,0	1,6
47,01-50,00	1,7	1,3	1,5	1,1
50,01-53,00	1,2	0,9	1,1	0,7
53,01-56,00	0,8	0,6	0,8	0,5
56,01 and more	7,9	5,7	7,4	5,5

	<b>Distribution by money income in 2005</b>			
	<b>Total income</b>		<b>Disposable income</b>	
	<b>Number of households surveyed</b>	<b>Population in them</b>	<b>Number of households surveyed</b>	<b>Population in them</b>
Total number	925	5439	925	5439
Including those with monthly per capita income (somon):				
below 7,00	8,3	8,9	8,5	9,1
7,01-11,00	6,7	7,9	6,8	7,9
11,01-15,00	8,2	9,5	8,5	9,8
15,01-19,00	9,4	10,9	9,5	10,9
19,01-23,00	9,2	9,9	9,7	10,3
23,01-27,00	8,4	8,9	8,5	8,9
27,01-31,00	8,2	8,3	8,2	8,3
31,01-35,00	6,2	6,1	6,6	6,5
35,01-39,00	5,9	5,5	5,6	5,2
39,01-43,00	4,2	4,1	4,2	4,0
43,01-47,00	3,5	3,0	3,7	3,1
47,01-51,00	3,1	2,7	2,9	2,5
51,01-55,00	2,4	2,0	2,0	1,8
55,01-59,00	2,0	1,6	2,3	1,6
59,01-63,00	1,9	1,4	1,7	1,3
63,01-67,00	1,4	1,2	1,3	1,1
67,01-71,00	1,4	0,9	1,0	0,8
71,01-75,00	0,8	0,6	0,7	0,6
75,01 and more	8,8	6,6	8,3	6,3

**APPENDIX 8. STRUCTURE OF AVERAGE MONTHLY EXPENDITURES OF POPULATION IN THE REPUBLIC OF TAJIKISTAN**  
(according to sampling household budget survey)

	2004						2005					
	Per 1 household member, somoni / month	of which:		Per 1 household member, in %	of which:		Per 1 household member, somoni / month	of which:		Per 1 household member, in %	of which:	
		Urban area	Rural area		Urban area	Rural area		Urban area	Rural area		Urban area	Rural area
<b>Money expenditures</b>	<b>32,93</b>	<b>42,83</b>	<b>29,22</b>	<b>100,0</b>	<b>100,0</b>	<b>100,0</b>	<b>43,43</b>	<b>57,29</b>	<b>38,15</b>	<b>100,00</b>	<b>100,00</b>	<b>100,00</b>
of which:												
<b>Consumer expenditures</b>	<b>29,36</b>	<b>39,17</b>	<b>25,69</b>	<b>89,2</b>	<b>91,5</b>	<b>87,9</b>	<b>37,52</b>	<b>48,42</b>	<b>33,37</b>	<b>86,4</b>	<b>84,5</b>	<b>87,5</b>
including:												
on foods	18,94	26,88	15,96	64,5	68,6	62,1	23,90	32,82	20,50	63,7	67,8	61,4
on nonfoods	7,00	7,29	6,90	23,8	18,6	26,9	9,01	9,54	8,80	24,0	19,7	26,4
including:												
clothes, footwear, fabrics	3,15	3,49	3,02	45,0	47,9	43,8	4,02	4,86	3,70	44,6	50,9	42,0
furniture and cultural and household appliances	0,80	0,96	0,74	11,4	13,2	10,7	1,05	1,12	1,03	11,7	11,7	11,7
medicines	0,42	0,60	0,35	6,0	8,2	5,1	0,53	0,61	0,51	5,9	6,4	5,8
building materials	0,81	0,24	1,03	11,6	3,3	14,9	1,16	0,27	1,49	12,9	2,8	16,9
fuel	0,12	0,11	0,12	1,7	1,5	1,7	0,17	0,08	0,20	1,9	0,8	2,3
tobacco goods, makhorka	0,16	0,18	0,16	2,3	2,5	2,3	0,18	0,10	0,19	2,0	1,0	2,2
alcoholic beverages	0,10	0,08	0,11	0,3	0,2	0,4	0,16	0,11	0,19	0,4	0,2	0,6
services	3,32	4,92	2,72	11,3	12,6	10,6	4,45	5,95	3,88	11,9	12,3	11,6
of which:												

	2004						2005					
	Per 1 household member, somoni / month	of which:		Per 1 household member, in %	of which:		Per 1 household member, somoni / month	of which:		Per 1 household member, in %	of which:	
		Urban area	Rural area		Urban area	Rural area		Urban area	Rural area		Urban area	Rural area
housing and communal services	1,03	1,69	0,78	31,0	34,3	28,7	1,29	1,81	1,08	29,0	30,4	27,8
including payments for :												
dwelling space	0,05	0,13	0,02	4,9	7,7	2,6	0,06	0,10	0,05	4,7	5,5	4,6
communal services	0,98	1,56	0,76	95,1	92,3	97,4	1,23	1,71	1,03	95,3	94,5	95,4
o/w electric energy	0,47	0,49	0,46	48,0	31,4	60,5	0,56	0,57	0,56	45,5	33,3	54,4
personal services	0,23	0,32	0,19	6,9	6,5	7,0	0,30	0,35	0,30	6,7	5,9	7,7
o/w repair and individual manufacture of clothes and footwear	0,04	0,07	0,03	17,4	21,9	15,8	0,06	0,09	0,05	20,0	25,7	16,7
cultural and educational services	0,06	0,03	0,08	1,8	0,6	2,9	0,10	0,04	0,12	2,2	0,7	3,1
payments for education	0,19	0,47	0,08	5,7	9,6	2,9	0,26	0,59	0,13	5,8	9,9	3,4
payments for medical services	0,11	0,30	0,03	3,3	3,1	1,1	0,18	0,21	0,13	4,0	3,5	3,4
payments for treatment in sanatoria and health resorts, including rest	0,01	0,02		0,3	0,4	0,0	0,01	0,02		0,2	0,3	0,0
transport services	1,62	1,87	1,52	48,8	38,0	55,9	2,12	2,47	1,99	47,6	41,5	51,3
communication services	0,03	0,08	0,01	0,9	1,6	0,4	0,09	0,21	0,05	2,0	3,5	1,3
legal services	0,01	0,02	0,01	0,3	0,4	0,4	0,03	0,03	0,03	0,7	0,5	0,8
<b>Taxes, due, and other payments</b>	<b>0,79</b>	<b>2,17</b>	<b>0,26</b>	<b>2,4</b>	<b>5,1</b>	<b>0,9</b>	<b>0,95</b>	<b>2,78</b>	<b>0,26</b>	<b>2,2</b>	<b>4,9</b>	<b>0,7</b>
<b>Other expenditures</b>	<b>2,78</b>	<b>1,49</b>	<b>3,28</b>	<b>8,4</b>	<b>3,5</b>	<b>11,2</b>	<b>4,96</b>	<b>6,09</b>	<b>4,52</b>	<b>11,4</b>	<b>10,6</b>	<b>11,8</b>

Continued

**DISTRIBUTION OF HOUSEHOLDS AND POPULATION IN THEM BY PER CAPITA CONSUMER EXPENDITURES in 2004**  
(according to sampling household budget survey), in %

	Number of households surveyed	Population in them	Households consisting of:					Households having children below 16	of which households having			
			1 person	2 persons	3 person	4 persons	5 and more persons		1 child	2 children	3 children	4 and more children
<b>Total number</b>	925	5394	25	49	68	135	648	793	161	225	186	221

of which those with monthly per capita expenditures (somoni) :

below 7,00	0,1	0,1					0,2	0,1				0,5
7,01-11,00	3,8	4,7				1,5	5,1	4,5	3,1	3,1	3,2	8,2
11,01-15,00	9,1	11,1	4,0	4,1	2,9	3,0	11,7	10,2	6,2	7,6	9,7	16,3
15,01-19,00	10,4	13,6	4,0	2,0		3,0	14,0	11,6	6,2	9,8	9,7	19,0
19,01-23,00	11,7	13,5	12,0	2,0	2,9	10,4	13,7	12,4	11,8	7,1	13,4	17,2
23,01-27,00	11,6	12,8	8,0	2,0	5,9	5,2	14,5	12,1	5,6	12,0	17,2	12,7
27,01-31,00	10,8	10,8		4,1	5,9	14,1	11,7	11,7	14,3	12,0	15,1	6,8
31,01-35,00	8,3	7,6		14,3	14,7	7,4	7,7	8,1	8,7	9,8	9,7	4,5
35,01-39,00	6,9	5,8	12,0	8,2	13,2	6,7	5,9	6,6	6,8	8,4	7,0	4,1
39,01-43,00	6,6	5,7		10,2	14,7	7,4	5,6	6,6	9,9	9,8	3,2	3,6
43,01-47,00	3,0	2,3		4,1	7,4	7,4	1,5	2,4	3,7	2,7	2,2	1,4
47,01-51,00	2,9	2,2	12,0	4,1	2,9	5,2	1,9	2,4	4,4	3,6	1,1	0,9
51,01-55,00	3,2	2,3	8,0	12,3	2,9	5,2	1,9	2,7	6,8	2,2	2,2	0,5
55,01-59,00	2,9	2,0	8,0	6,1	5,9	5,9	1,5	2,4	3,7	3,1	2,7	0,5
59,01-63,00	1,1	0,9		2,0		3,0	0,8	1,0	0,6	1,8	1,6	
63,01-67,00	1,3	0,9	8,0	6,1	1,5	1,5	0,6	0,5	1,2	0,4		0,5
67,01-71,00	1,4	0,7	4,0	6,1	4,4	3,0	0,2	1,0	1,2	1,8	0,5	0,5
71,01-75,00	1,1	0,7	4,0	4,1	2,9	2,2	0,3	0,8		1,8		0,9
75,01 and more	3,9	2,3	16,0	8,2	11,8	8,2	1,2	3,0	5,6	3,1	1,6	2,3

Continued

**DISTRIBUTION OF HOUSEHOLDS AND POPULATION IN THEM BY PER CAPITA CONSUMER EXPENDITURES in 2005**  
(according to sampling household budget survey), in %

	Number of households surveyed	Population in them	Households consisting of:					Households having children below 16	of which households having			
			1 person	2 persons	3 person	4 persons	5 and more persons		1 child	2 children	3 children	4 and more children
<b>Total number</b>	925	5439	24	43	69	137	652	779	164	216	197	202

of which those with monthly per capita expenditures (somon) :

below 10,00	0,65	0,83			1,45		0,77	0,77	0,61		2,03	0,50
10,01-15,00	3,45	4,71					4,92	4,10	1,22	3,24	3,05	8,42
15,01-20,00	9,05	10,90			2,90	5,11	11,52	10,40	6,71	9,72	8,63	15,84
20,01-25,00	11,31	14,03	8,33	4,65	2,90	2,19	14,75	12,58	4,88	10,19	12,18	21,78
25,01-30,00	12,50	13,94	12,50		7,25	5,84	15,36	13,74	8,54	8,33	16,24	21,29
30,01-35,00	11,10	11,63	12,50	4,65	8,70	8,03	12,44	10,78	7,32	9,72	13,70	11,88
35,01-40,00	11,75	11,30		16,28	8,70	12,40	12,13	12,07	12,80	11,11	17,26	7,43
40,01-45,00	10,13	9,23	8,33	13,95	11,59	11,68	9,37	10,40	14,02	12,50	10,15	5,44
45,01-50,00	6,03	5,15	8,33	11,63	8,70	7,30	5,06	5,65	9,75	6,94	5,07	1,48
50,01-55,00	5,28	4,44		9,30	10,14	8,76	3,84	4,75	7,31	7,87	2,54	1,48
55,01-60,00	2,37	2,26		2,33	2,90	4,38	2,00	2,57	3,05	4,63	1,52	0,99
60,01-65,00	3,23	2,53	4,17	6,98	2,90	6,57	2,15	2,95	6,10	2,78	2,03	1,48
65,01-70,00	3,34	2,53	12,50	4,65	5,79	6,57	2,00	2,57	4,88	4,17	1,02	0,50
70,01-75,00	2,59	2,02	4,17	6,98	5,79	2,92	1,84	2,18	4,88	2,32	1,02	0,99
75,01-80,00	0,97	0,68	4,17	4,65	1,45	0,73	0,62	0,13	0,61			
80,01-85,00	0,97	0,55	4,17	4,65	1,45	2,92	0,15	0,64	1,22	0,93		0,50
85,01-90,00	0,32	0,26				1,46	0,15	0,26	0,61	0,46		
90,01-95,00	0,97	0,66	8,33			3,65	0,31	0,51	0,61	0,46	1,02	
95,01 and more	3,99	2,35	12,50	9,30	17,39	9,49	0,62	2,95	4,88	4,63	2,54	

**APPENDIX 9. PER CAPITA CONSUMPTION OF FOOD IN THE REPUBLIC OF TAJIKISTAN**  
(according to sampling household budget surveys)

(per month, kg)

	<i>2004</i>			<i>2005</i>		
	<b>Total</b>	<b>of which:</b>		<b>Total</b>	<b>of which:</b>	
		<b>Urban area</b>	<b>Rural area</b>		<b>Urban area</b>	<b>Rural area</b>
Bread products	12,99	10,51	13,96	12,91	10,37	13,89
Potatoes	2,95	3,03	2,92	2,68	2,54	2,73
Vegetables and melons	6,41	5,25	6,86	6,62	5,55	7,03
Fruits and berries, including dry	3,77	1,68	4,57	3,20	1,64	3,80
Sugar and confectionary	0,83	0,92	0,80	0,92	0,97	0,90
Meat and meat products	0,61	0,73	0,57	0,67	0,82	0,64
Fish products	0,01	0,06	0,01	0,01	0,02	0,01
Milk and dairy products	4,03	3,12	4,39	4,02	3,06	4,39
Eggs (pieces)	2	2	2	2	2	2
Vegetable oil and margarine	0,96	0,99	0,95	1,03	1,00	1,04

**FOOD SECURITY AND POVERTY  
INFORMATION BULLETIN  
OF THE REPUBLIC OF TAJIKISTAN**

/ Edited by Shabozov M.Sh. - Chairman  
of the State Committee on Statistics  
of the Republic of Tajikistan  
734025 Tajikistan, Dushanbe, Bokhtar Street, 17 /

**Editorial board:**

**Shabozov M.Sh.** - Chairman of Editorial Board  
Mukhammadieva B.Z., Asoev A.A., Ashurov I.S., Baimatov K.F., Gukasova T.P.,  
Abdulloev M.A., Jdanova L.V., Zieaeva M.A., Kislitsina E.A., Turaev B.T.

**Responsible for:  
- sections of the Bulletin**

Vital and Employment Statistics	Kislitsina E.A.	27-80-88
Social Statistics	Budnikova E.V.	27-94-88
Prices, Household Budgets and Poverty Statistics	Turaev B.T.	27-56-28
Finances	Pulatova N.T.	27-98-71
Gross Domestic Product	Zieaeva M.A.	27-98-71
Trade, External Activity	Jdanova L.V.	23-32-48
Agriculture	Abdulloev M.A.	27-81-14
Nature and Environment Statistics	Norov K.	27-82-66

**-preparation of main document**, systematization of parts, and design: Economic Analysis and International Relations Department  
**Gukasova T.P.**  
Tel. 21-23-87  
e-mail: [stat@tojikiston.com](mailto:stat@tojikiston.com)

**-publication:** Chief of Central Computer Center  
of the State Committee on Statistics  
of the Republic of Tajikistan  
**Baimatov K.F.**  
Tel: 27-96-09