

**STATE COMMITTEE ON STATISTICS
REPUBLIC OF TAJIKISTAN**

INFORMATION BULLETIN

**FOOD SECURITY AND POVERTY
OF THE REPUBLIC OF TAJIKISTAN**

№ 3 / 2006

Dushanbe - 2006

Statistical service is one of the effective methods for establishing the order and evaluation of prospects of economic agents activity. Under the conditions of market economy, it is not possible to insure the sustainable development without proper accounting, work analysis and resource planning.

In this respect, and in accordance with legislation, all enterprises, organizations, institutions, and all production and non-production subjects, independently of their form of ownership, have to submit all required complete and accurate reports in due time to the statistical bodies. Thereby, statistical recording is to be indispensable, complete and unexceptional on the whole territory of the republic.

Relevant state authorities have to take required actions to bring accounting system into the line with international standards.

E.SH.RAHMONOV

Introduction

In accordance with European Commission Matrix on Policy Reform of Memorandum of Understanding on Food Security Program in the Republic of Tajikistan the decision about preparation and publishing of Quarterly Food Security Bulletin was made to ensure system of reliable operative information and analysis of current food security situation in the Republic of Tajikistan.

“Food security presumes that all people have access, at all time, to sufficient food required for an active and healthy life. Food security also means physical availability of food in sufficient quantities, accessibility of those foodstuffs for households (through the market and other sources, that suppose sufficient purchasing power), as well as consumption of food in quantities required for satisfying of nutritional needs”.

The purpose of the Bulletin is to bring together and systematize available information on food security in Tajikistan; i.e. the availability of food in the republic and outlook for food production, indicators on access to food, food use and utilization. The Bulletin also contains analysis of current food security situation in the Republic.

The base indicators for Food Security Bulletin are production of food, food availability and accessibility, areas under crops, agricultural production and productivity, main climatic conditions, health indicators, water supply, prices, and quantitative indicators reflecting situation on food market.

The Appendices to the Bulletin show indicators of Poverty Reduction Strategy Paper, information on nutritional status of various socio-economic groups of the population, as well as estimated data on food balance.

It is a first time when the bulletin also includes the information on preliminary results of Multiple Indicator Cluster Survey (MICS-3) conducted jointly by the State Committee on Statistics and UNICEF in 2005.

The presented Quarterly Food Security Information Bulletin of Tajikistan was prepared by State Committee on Statistics with participation of key Ministries and Departments (Ministry of Finance, Ministry of Health Care, Ministry of Labor and Social Protection of Population, Ministry of Education, Ministry of Communication, Ministry of Transport,

Social Protection Fund, Hydrometeorological Agency under the Committee for Nature and Forestry Protection of the Republic of Tajikistan, etc.). The publication is prepared with technical and financial support of European Commission in the Republic of Tajikistan.

The publication is intended both for specialists and all interested persons.

All recommendations, suggestions and remarks related to the content of the Bulletin should be addressed to the State Committee on Statistics of the Republic of Tajikistan at the following address:

17 Bokhtar Street Dushanbe
734025 Tajikistan
Tel. (992 372) 212387, Fax (992 372) 214375
email: stat@tojikiston.com
<http://www.stat.tj>

CONTENTS

Introduction	131
Overview	135
CHAPTER I. SOCIO-ECONOMIC INDICATORS	137
1.1. Gross Domestic Product.....	137
1.2. Price and Tariff Indices	138
1.3. Foreign trade	139
1.4. Labor market	139
CHAPTER II. AVAILABILITY OF FOOD	141
2.1. Growth in agricultural production.....	141
2.1.1 Outlook of agricultural production	141
2.1.2. Livestock production	145
2.2. Producer prices	146
2.3. Trade in basic foodstuffs.....	148
2.4. Availability of food per capita	149
CHAPTER III. ACCESS TO FOOD.....	150
3.1. Retail prices.....	150
3.2. Incomes and Expenditures	153
3.2.1. Incomes.....	153
3.2.2. Expenditures	154
3.3. Poverty in the Republic of Tajikistan	154
3.4. Food insecurity: households with spend more than 50% of expenditures on food.....	155
CHAPTER IV. USE AND UTILIZATION	156
4.1. Consumption of food products by the population.....	156
4.2. Food security indicators not related to income	158
4.2.1. Population morbidity.....	158
4.2.2. Status of women and children in the Republic of Tajikistan	159
4.2.2.1. Child and Infant Mortality	159
4.2.2.2. Immunization	159
4.2.2.3. Birth Registration.....	160

4.2.2.4. Nutritional Status	161
4.2.2.5. Water and Sanitation.....	161
4.2.2.6. Salt Iodization	162
METHODOLOGY	163
Glossary	165
List of abbreviations	165
Appendix 1. Review of hydro-meteorological conditions of the Republic of Tajikistan	166
Meteorological conditions	166
Hydrological conditions.....	167
Review of snow slides and mudflows.....	168
Appendix 2 PRSP Indicators in the Republic of Tajikistan.	169
Appendix 3. Changes in average wholesale prices in Tajikistan	172
Appendix 4. Changes in average consumer prices in Tajikistan.....	173
Appendix 5. Food balance	175
Appendix 6. Money incomes, expenditures and consumption of households, by decile population groups in the Republic of Tajikistan	181
Appendix 7. Distribution of households and population in them by per capita income in the Republic of Tajikistan.....	182
Appendix 8. Structure of average monthly expenditures of population in the Republic of Tajikistan	183
Appendix 9. Per capita consumption of food in the Republic of Tajikistan	187

OVERVIEW

According to preliminary estimates, growth of real Gross Domestic Product (GDP) in January - September 2006 as compared to the similar period of the previous year was positive and amounted to 7.6%.

Production of grain as compared to the similar period of the previous year decreased, while production of potatoes, vegetables, melons, fruits, and grapes increased.

During nine months of 2006, production of meat (live weight) by farms of all categories increased by 3.6% as compared to the similar period of the previous year, production of milk increased by 3.8%, and production of eggs - by 7.5%.

Monthly inflation rate in consumer's sector made up 1.0% (against 0.63% in the corresponding period of the previous year).

During January-September 2006, the highest increase in prices was registered for carrot, cabbage, sand sugar, onion, rice, potatoes, beef, mutton, buckwheat, pea, live fish, milk, condensed milk, poultry meat, semi-smoked sausage, semolina, cotton oil, etc..

Real increase of wages and salaries (deflated by the CPI) in September 2006 made up 15.1% as compared to August 2006, and 23.2% as compared to September 2005.

In September 2006, the lowest wages and salaries in real sector were observed in agriculture and forestry.

As of the end of September 2006, total arrears in salary payments for the republic amounted to 24669.2 thsd.somoni, of which arrears for September 2006 accounted for 13.2% (3261.6 thsd.somoni).

In 2005 and first half of 2006, average expenditures of population have risen mainly due to increase in prices. In total structure of household's expenditures for food, bread and bread products occupies the first place (36.0%). Pensioners spend for food 68% of total consumer expenditures.

In the third quarter of 2006, increase in number of registered cases of tuberculosis by 0.6% (4.5% among children aged 0-14) as compared to the third quarter of 2005 was observed.

In the third quarter of 2006 as compared to the third quarter of 2005, number of cases of brucellosis among population decreased by 7.4%. At the same time, number of cases of brucellosis among children aged 0-14 increased by 5.7%.

According to preliminary results of Multiple Indicator Cluster Survey (MICS-3) conducted by the State Committee on Statistics of Tajikistan and UNICEF in 2005, child mortality rates are almost five times higher in children born to mothers with little or no secondary education as compared to those with higher levels of education. Children born into the poorer households (poorest quintile) interviewed are more likely to die during their first five years of life as compared to those living in wealthier environment.

Approximately 95 percent of children aged 15-26 months received a BCG vaccination by the age of 12 months. The first dose of DPT was given to 91 percent of these same children with the percentage declining for subsequent doses of DPT to 87 percent for the second dose, and 82 percent for the third dose. Similarly, 92 percent of children received the first dose of Polio vaccine by age 12 months with this declining to 79 percent by the third dose. The coverage for measles vaccine by 15 months is 86 percent.

The results of the survey shows that in Tajikistan the births of 88 percent of children less than five years of age have been registered. Children in urban areas are somewhat less likely to have their births registered (85 percent) than children in rural areas (90 percent). The lowest birth registration rates are observed in RRS and Dushanbe (81 and 83 percent).

The age pattern shows that a higher percentage of children aged 12-23 months are underweight or wasted as compared to children of other ages. However, for stunting the levels reach a plateau during the second to fifth year of life. This pattern is expected and is related to the age at which many children cease to be breastfed and are continuously exposed to contamination from the water, food and the environment.

Results of MICS-2003 showed that in 46 percent of households, salt was found to contain 15 parts per million PPM or more of iodine, that reveal an important progress made over the past five years.

The percentage of the population using an improved source of drinking water has increased in comparison to the MICS 2000 when the figure was only 57 percent. Use of public taps or standpipes has increased from 8 to 23 percent while surface water use has decreased from 33 to 25 percent.

CHAPTER 1. SOCIO-ECONOMIC INDICATORS

The mentioned below socio-economic indicators depict overall economic situation in the country, required for analysis of food security situation.

1.1 GROSS DOMESTIC PRODUCT

According to preliminary estimates, growth of real Gross Domestic Product (GDP) in January - September 2006 as compared to the similar period of the previous year was positive and amounted to 7.6%. The biggest impact was due to increase of production in agriculture, industry and trade.

Table 1: Main socio-economic indicators

	<i>2004</i>	<i>2005</i>	<i>January - September 2005</i>	<i>January - September 2006</i>
Population, as of the end of period (million)	6,8	6,9	6,9	7,0
Nominal GDP (mln.somoni)	6157,5	7201,1	5049,2	6519,8
of which (in %):				
agriculture	22,0	21,4	20,3	22,9
industry	20,5	18,5	18,3	18,4
services	41,8	43,8	46,0	43,2
GDP per capita (somoni)	910,0	1051,2	x	x
GDP growth , in % to the corresponding period of the previous year	10,6	6,7	105,1	107,6
State budget deficit / surplus (as percentage of GDP)	-0,2	-1,5	-0,7	0,3 ¹
Consumer Price Indices, in % to the corresponding period of the previous year	106,8	107,8	107,7	110,8
Price Indices for foodstuffs	105,0	108,9	108,9	112,1
Price indices for services	117,3	109,8	109,6	118,4
Exchange rate of somoni (per 1 US Dollar)	2,9711	3,1175	3,0934	3,2649
Officially registered unemployment rate	2,0	2,0	2,1	2,4
Number of registered unemployed, thsd.persons	38,8	43,6	44,9	47,2
in % to the corresponding period of the previous year	90,4	112,4	110,6	105,2

	2004	2005	January - September 2005	January - September 2006
Monthly average wages and salaries (somon)	61,81	83,58	84,10	108,31
in % to the corresponding period of the previous year	138,6	135,2	150,3	128,8
Trade balance (mln.USD)	-276,4	-421,1	-302,6	-214,0
Share of food in total imports, %	9,6	11,7	14,1	9,1
Share of food in total exports, %	3,2	3,3	3,7	2,0

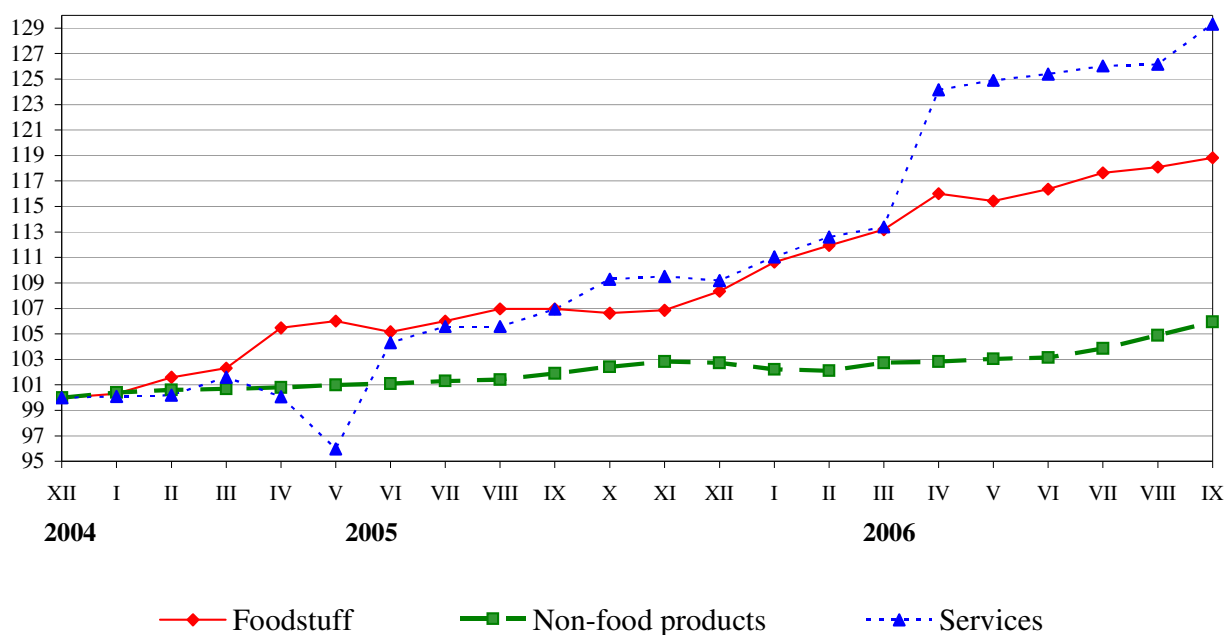
Source: State Committee on Statistics

¹ – Special funds are excluded

1.2 Price and Tariff Indices

In January-September 2006, consumer price index constituted 109.0%, of which for foodstuff - 109.4%, non-food products - 103.1%, and paid services to population - 118.6%. Monthly inflation rate in consumer's sector made up 1.0% (against 0.63% in the corresponding period of the previous year).

Graph 1: Consumer price indices for foodstuff, non-food products and paid services (at the end of each month, in % to December 2003)



During the nine months of 2006, the increase of prices of foods outpaced those of non-foods. More detailed information on prices of food is available in the section 3 “Access to food”.

1.3 Foreign trade

In January-September 2006, foreign trade turnover of the Republic of Tajikistan including electric power and natural gas was valued at 2228.0 million USD, which is by 634.4 mln.USD (or 39.8%) higher than in January-September 2005. The gap between exports and imports determined the deficit of trade balance valued at - (minus) 214.0 million USD.

In January-September 2006, volume of exports amounted to 1007.0 mln.USD, which is by 56.0% or 361.5 mln.USD higher than in the similar period of 2005. Volume of imports amounted to 1221.0 mln.USD, which is by 28.8% or 272.9 mln.USD higher than in January-September 2005.

Major plant products in exports were fruits (12167 thsd.USD) and vegetables (5014 thsd.USD), while in imports it were wheat (19552 thsd.USD) and flour (34259 thsd.USD).

1.4 Labor market

According to preliminary estimates, the number of economically active population (employed and officially registered unemployed) in September 2006 was 2053.6 thsd.persons, of them 2006.6 thsd.persons (97.7%) were occupied in the economy, and 47.2 thsd.persons (2.3% of economically active population) had official status of unemployed.

As of the end of September 2006, 67.7 thsd.persons were registered in employment offices as looking for a job, which is by 19.0% less than at the corresponding date of the previous year, and by 5.8% less than in August 2006.

From the beginning of 2006, 46.6 thsd.persons applied to employment offices for a job (which is by 0.1% higher than in 2005). Of them, 43.9% (20.5 thsd.persons) were young people aged 15-29. All applied persons were unemployed. 44.5% (20.7 thsd.persons) of them are persons who were looking for a job for the first time, and 40.5% (18.9 thsd.persons) did not have a profession / qualification.

As of the end of September 2006, the number of vacancies, offered by enterprises through employment offices increased by 4.5% as compared to the similar period of 2005, and amounted to 17.4 thsd places. At the same time, the number of vacancies for blue-collar job increased by 0.9% and amounted to 8.5 thsd (48.7% of total number of vacancies).

In January-September 2006, number of professional trainings through employment offices for registered unemployed and their engaging in public paid works increased as compared to the corresponding period of 2005. In January-September 2006, 6.4 thsd. registered unemployed were offered professional training by employment offices (which is by 13.8% higher than at the corresponding period of the previous year). 5.0 thsd. persons have completed the training courses.

Besides, 16.6 thsd. persons were sent to public paid works (of which 9.5 thsd. persons were registered as unemployed), which is by 3.3% higher than at the corresponding period of 2005.

Hidden unemployment means underemployment, when a part of workers are on forced leave or work during incomplete working week / working day due to downtime. In January - September 2006, 15.7 thsd. persons were on leave on initiative of administration, of them 13.4 thsd. persons (84.9%) were on leave without pay. 2.0 thsd. persons were working during incomplete working week / working day. Unemployment rate, including hidden unemployment, amounted to 3.1% of economically active population.

Monthly average nominal wages and salaries of employees in September 2006 was 137.34 somoni, increasing by 16.2% as compared to August 2006, and by 39.3% as compared to September 2005.

Real increase of wages and salaries (deflated by the CPI) in September 2006 made up 15.1% as compared to August 2006, and 23.2% as compared to September 2005.

In September 2006, the lowest wages and salaries in real sector were observed in agriculture and forestry, amounting to 54.43 somoni and 77.30 somoni, respectively. The highest wages and salaries were in construction (343.13 somoni), communication (312.67 somoni), transport (271.90 somoni), and industry (260.22 somoni). Average monthly salary in real sector in September 2006 was 133.34 somoni, increasing by 34.0% as compared to September 2005.

In nonmaterial sphere, the highest salary remains in the area of finance and crediting (601.20 somoni in September 2006). Average monthly salary in nonmaterial sphere in September 2006 was 124.79 somoni, increasing by 40.2% as compared to September 2005.

As of the end of September 2006, total arrears in salary payments for the republic amounted to 24669.2 thsd. somoni, of which arrears for September 2006 accounted for 13.2% (3261.6 thsd. somoni).

CHAPTER II. AVAILABILITY OF FOOD

Availability refers to the physical presence of food as a result of domestic production or market operations. On country level availability of food is determined by combination of food stocks, commercial imports, food aid and domestic production. The availability is also determined by the following elements: weather conditions, crop yield, livestock and productivity, producer prices for food, food prices in neighboring countries, as well as national policy defining production, trade, distribution and pricing.

2.1. Growth in agricultural production

The value of gross agricultural output in January - September 2006 in all categories of farms increased by 8.5% as compared to the corresponding period of the previous year and amounted to 2410124 thsd.somoni (at current prices), of which: plant products - 1838512 thsd.somoni (increased by 9.9%), and animal products - 571612 thsd.somoni (increased by 4.4%).

The value of gross agricultural output in all categories of farms in Khatlon Oblast amounted to 1012045 thsd.somoni (increased by 13.6%), Soghd Oblast - 840504 thsd.somoni (by 4.9%), GBAO - 58220 thsd.somoni (by 6.7%), and regions of the republican subordination - 499355 thsd.somoni (by 5.3%).

2.1.1. Outlook for agricultural production

Climate influence on crop production

The **July** mean air temperature on the most part of the republic exceeded the norm by 0.2-1.6°C, and only in Soghd region and Yavan district was below the norm by 0.5-1.2°C, as follows: 25-35°C in valleys, 15-20°C in mountains, up to 23°C in the western part of GBAO, and 13-15°C in high altitudes. Not heavy rainfalls were observed during 1-5 days. 10-12 and 24-27 July were characterized by dust storms and mists in valleys of Khatlon regions and RRS, which were caused by entry of cold air from north-westward. During the month, water content of all rivers, including Vakhsh and Gund decreased (73-75% below the norm).

The **August** of this year was dry and hot. The mean monthly air temperature in the most of regions exceeded the norm by 1-3°C and was: 25-30°C in valleys, 24-26°C in foothills, 17-25°C in mountains, and 12-15 degrees in high altitudes. The amount of precipitations was 1-14 mm, which is below the norm. In the first decade of the **August**, water content of most rivers was subject to fluctuations. Beginning from second decade of the month, water content of the rivers gradually decreased. During the month, the level of Sarez lake increased by 301 sm and amounted to 2665 sm. Content of Nurek reservoir

increased by 2.017 mln.m³ and amounted to 10544 mln.m³, which is higher than the level of the previous year by 0.075 mln.m³. Water level in Kairakum reservoir decreased by 0.685 mln.m³ and amounted to 1009 mln.m³, which is less than the level of the previous year by 0.503 mln.m³.

The **September** mean air temperature was below the norm by 1°C all over the territory of the republic, and near the norm in high altitudes: 18-23°C in valleys, 12-17°C in mountains, and 6-8°C in high altitudes. In September, gradual decrease in water content on the most rivers of the republic was registered. Monthly water discharge of the most rivers was below and near the norm (70-100%), and below and within the last years values (80-100%). During the month, the level of Sarez lake decreased by 31 sm and amounted to 2634 sm. Content of Nurek reservoir decreased by 0.103 mln.m³ and amounted to 10441 mln.m³, which is less than the level of the previous year by 0.077 mln.m³. Water level in Kairakum reservoir increased by 0.171 mln.m³ and amounted to 1180 mln.m³, which is less than the level of the previous year by 0.287 mln.m³.

Table 2: Water reservoirs as of 31 September 2006

<i>Water reservoirs</i>	<i>Changes during the month, mln. cubic meters</i>	<i>Volume of water in 2005</i>		<i>Volume of water in 2006</i>	
		<i>mln. cubic meters</i>	<i>in % to total capacity</i>	<i>mln. cubic meters</i>	<i>in % to total capacity</i>
Kayrakkum	+ 0,171	1180	28,4	2526	60,7
Nurek	- 0,103	10441	99,4	9149	87,1

The weather reports prepared by the Hydrometeorological Agency of the Republic of Tajikistan for the third quarter of 2006 are attached at Appendix 1.

Table 3: Sown area and gross harvest

	<i>2004</i>	<i>2005</i>	<i>2005</i>	<i>2006</i>
			<i>January - September</i>	
Sown area (thsd.ha)	905,6	901,1	900,4	899,3
Winter crops	163,7	181,2	181,3	214,1
of which cereal crops	163,7	181,2	181,3	214,1
of which:				
wheat	152,3	167,7	167,8	198,5
barley	11,4	13,5	13,5	15,5

	2004	2005	2005	2006
			January - September	
Spring crops	741,9	719,9	719,1	685,2
of which cereal crops	240,1	214,3	214,4	187,8
of which:				
wheat	170,7	150,1	150,3	122,2
barley	37,5	31,3	31,1	30,4
Industrial crops	333,1	325,4	325,7	294,0
Potatoes	28,6	27,5	27,5	27,9
Vegetables	32,0	33,4	33,5	35,8
Melons	10,6	9,2	9,2	9,1
Gross harvest, thsd.tons				
Grain (weight after processing)	891,6	934,9	757,2	743,9
Barley (weight after processing)	63,4	64,5	53,8	52,8
Maize for grain	113,0	155,8	96,2	
Potatoes	527,2	555,1	310,5	314,3
Vegetables	681,5	718,5	463,4	504,0
Melons	150,4	170,2	142,9	153,8
Crop yield, centners / ha¹				
Cereal crops	19,8	19,5	16,7	17,0
wheat	19,9	19,6	17,3	17,6
barley	14,6	15,1		
maize for grain	46,8	40,5	35,6	34,6
Potatoes	183,0	196,2	192,0	182,0
Vegetables	186,0	186,8	182,0	176,0
Melons	136,0	145,7	135,0	147,0

¹ public sector and dehqan farms

Source: State Committee on Statistics

The share of areas under cereals and leguminous cultures accounted for 44,7% of all sown areas, under technical cultures - 32,7%, of which under cotton - 29,2%, under feed crops - 14,5%, under potatoes, vegetables and melons - 8,1%.

As compared to the similar period of the previous year, production of grain decreased by 13332 tons (1,8%). Production of potatoes increased by 15775 tons (5,3%), vegetables - by 40393 tons (8,7%), melons - by 10916 tons (7,6%), fruits - by 34756 tons (41,9%), and grapes - by 14709 tons (31,5%).

As of 1 October 2006, agricultural enterprises and dehkan farms have harvested grain and legumes (excluding maize) from the area of 240.79 thsd.ha and it is more by 0.8 thsd.ha as compared to the similar period of the previous year. From the harvested area 398 thsd.tons of grain were threshed (from the area of 234.5 thsd.ha) with total yied of 17.0 centners from one hectare.

Maize for grain was harvested from the area of 3772 ha (more by 9% as compared to the corresponding period of the previous year). 12315 tons of maize for grain were harvested with average yield of 29.5 centners for one hectare.

82.3 tons of potatoes were harvested from the area of 4507 ha (which is more by 8.5 thsd.tons as compared to the similar period of the previous year). Yield of potatoes was 182 centners from one hectare (more by 10 c/ha as compared to nine months of 2005). 160.7 thsd.tons of vegetables were harvested from the area of 9119 ha, with average yild of 176 centners/ha (by 6 centners/ha higher then in corresponding period of the previous year). 76.2 thsd.tons of melons were harvested with average yield of 147 centners/ha. During the reporting period fruits and grapes harvest made us 47.9 thsd tones and 34.2 thsd.tons, respectively, increasing by 2.2 and 2 times as compared to the corresponding period of the previous year.

Winter cereal crops were planted by agricultural enterprises and dehkan farms on the area of 3159 hectares (2% of planned area) or 77.0% as compared to the similar period of the previous year.

Fall-ploughing was carried out on the area of 1411 hectares (54% of the level of the previous year).

As of 1 October 2006, winter agricultural crops were planted by agricultural enterprises and dehkan farms on the area of 510 hectares, which is more by 284 hectares (2 times) as compared to the similar date of last year; of them 286 ha are sown to vegetables and 224 ha are sown to perennial naked grasses.

As of 1 October 2006, agricultural enterprises and dehkan farms sowed 14430 tons of seeds of cereal crop and leguminous, including 12631 tons of wheat seeds, 536 tons of maize seeds, and 1639 tons of seeds of other cereal crops. Besides, 20 tons of seeds of cereal crop and leguminous were put to seed bank.

As compared to the corresponding period of the previous year, amount of sowed seeds increased by 3450 (or 31%) tons for cereal crop and leguminous, of which by 2528 tons (or 25%) for wheat .

2.1.2. Livestock production

As of 1 October 2006, number of cattle in farms of all categories increased by 5.1% as compared to the similar date of the previous year; the number of sheep and goats increased by 4.2%, poultry – by 10.1%. The increase in number of cattle is observed in farms of Soghd oblast (by 5.5%), GBAO (by 1.9%), Khatlon oblast (by 0.2%), and RRS (by 4.1%) . Number of poultry increased in farms of Khatlon oblast (by 13.7%), GBAO (by 6.1%), Soghd oblast (by 5.3%), and RRS (by 10.6%).

During nine months of 2006, farms of all categories produced 69.5 thsd. tons of meat (live weight) or 103.6% as compared to the similar period of the previous year, 374.4 thsd.tons of milk (103.8%), and 78.7 mln.eggs (107.5%).

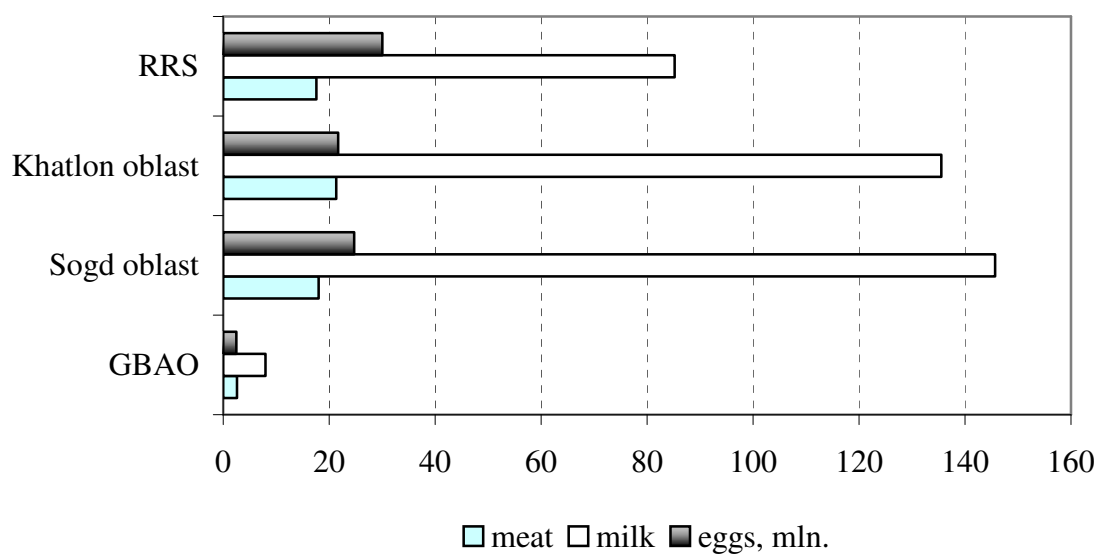
The average milk yield per cow for January-September 2006 was 1174 kg decreasing by 68 kg as compared to the corresponding period of the previous year. During the reporting period, in average 48 calves were received from every 100 female cows. The average output of eggs from 1 laying hen was 96 eggs, decreasing by 38 pieces as compared to the similar period of 2005. Laying ability in farms of Rudaki district increased by 37 pieces, and in Vahdat district - by 10 pieces.

Table 4: Main indicators of livestock production in the Republic of Tajikistan

	2005	2006	Nine months of	
			2005	2006
Production, thsd.tons				
Meat (slaughtered)	48,2	53,7	33,5	34,8
of which:				
Beef and veal	21,8	24,3	15,1	15,7
Mutton and goats meat	23,8	26,5	16,5	16,8
Poultry	0,5	0,6	0,4	0,6
Other meat	2,1	2,3	1,5	1,7
Milk	489,5	533,0	360,7	374,4
Eggs, mln.	77,7	98,7	73,2	78,7
Productivity				
The average milk yield per cow, kg	1573	1597	1242	1174
The average output of eggs per laying hen, pieces	261	123	134	96

Source: data of State Committee on Statistics

**Graph2. Production of main live-stock products
in all categories of farms in January-September 2006, thsd. tons**



2.2. Producer prices

Table 5: Changes in producer prices

(somon / kg)

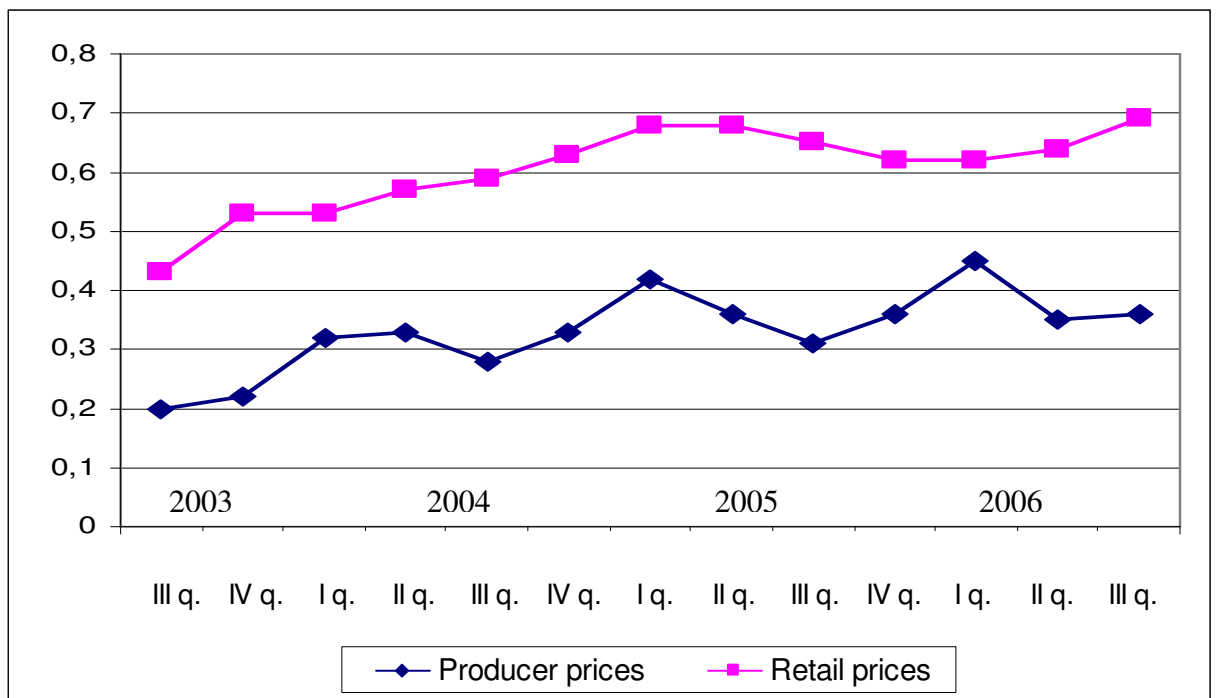
	2005				2006		
	I q.	II q.	III q.	IV q.	I q.	II q.	III q.
Wheat	0,42	0,36	0,31	0,36	0,45	0,35	0,36
Milk	0,42	0,41	0,41	0,41	0,51	0,52	0,51
Potatoes	0,19	0,19	0,29	0,36	0,28	0,35	0,44

Source: State Committee on Statistics

In January-September 2006, the imports of wheat increased by 5% as compared to the similar period of the previous year.

Graph 3. Trends in producer and retail prices of wheat

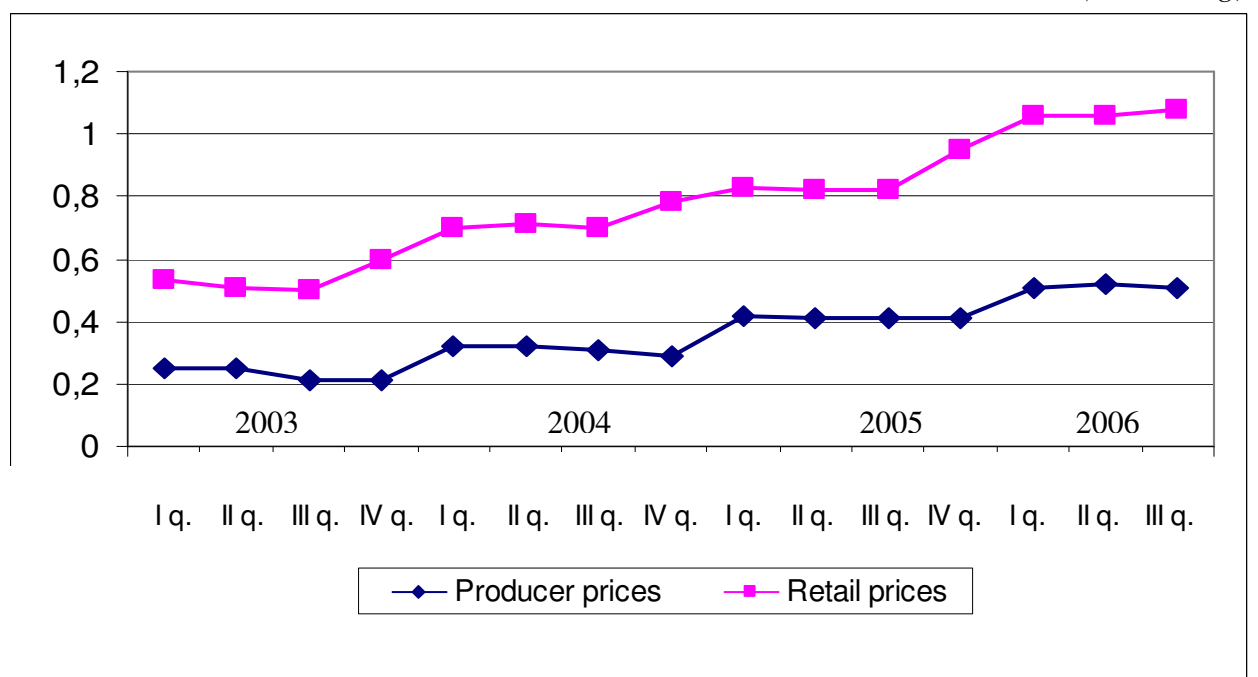
(somoni/kg)



In 2004 and 2005 the average price of milk was subject to seasonal fluctuations, and prices mainly increase in fourth quarter of each year. In the second quarter of 2006, average retail price of milk was 1.06 somoni, while wholesale price was 0.52 somoni, and increased as compared to the similar period of the previous year by 29% and 27%, respectively. In the third quarter of 2006, the wholesale price of milk slightly decreased and amounted to 0.51 somoni, while retail prices increased up to 1.08 somoni.

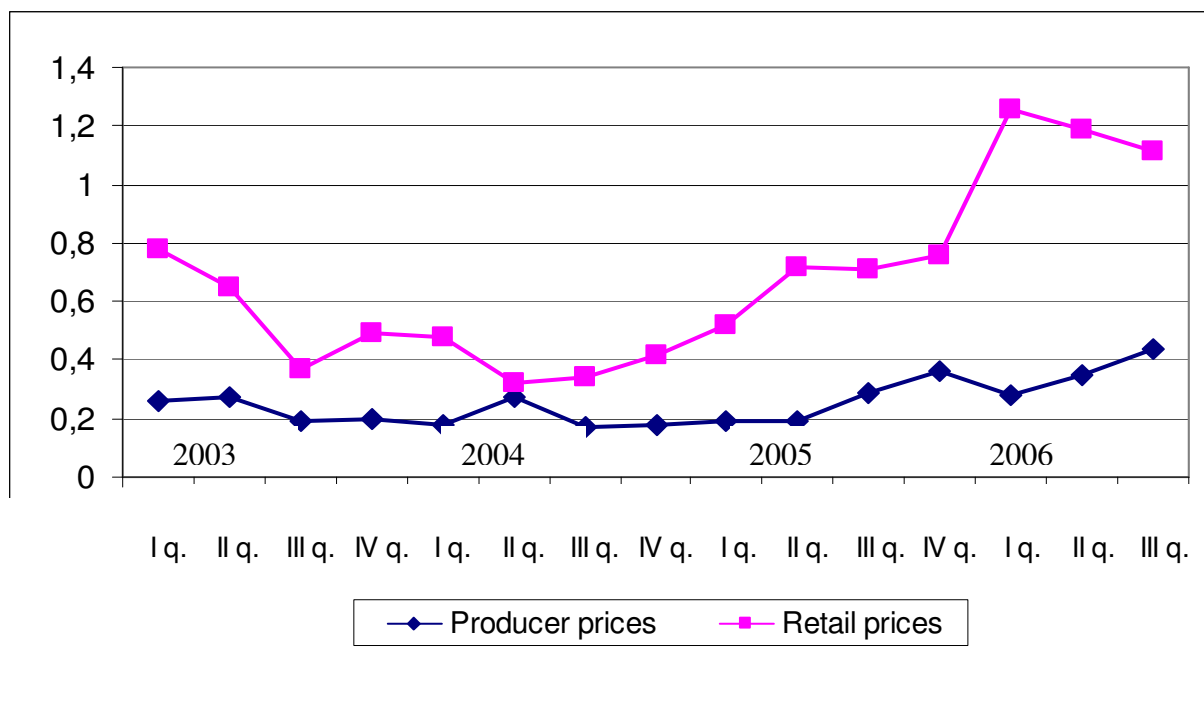
Graph 4. Trends in producer and retail prices of milk

(somoni/kg)



Graph 5. Trends in producer and retail prices of potatoes

(somoni/kg)



The given graphs show that change in retail prices is higher than in producer's ones. This trend is specific for all types of agricultural products. In the first quarter of 2006 both retail and wholesale prices of potato increased by 47 and 2.4 times, respectively, as compared to the first quarter of 2005. In the second quarter, wholesale prices continued to increase and amounted to 0.35 somoni per kg, while retail prices slightly decreased as compared to the first quarter of 2006, but as compared to the second quarter of 2005 they increased and amounted to 1.19 somoni per kg. In the third quarter of 2006, wholesale price increased again up to 0.44 somoni, while retail price slightly decreased and amounted to 1.11 somoni per kg. (see Appendices 3 and 4).

2.3. Trade in basic foodstuffs

Share of food products in the total value of exports of Tajikistan accounted for 3.0% and 2.4% in January-September of 2005 and 2006, respectively. The share of food products in total volume of imports was well higher and accounted for 11.2% and 10.7%, respectively.

The major food products imported to the Republic of Tajikistan were wheat and flour (the greatest share), as well as sugar, vegetable oil, fruits, flour products (macaroni, noodles, bread, cakes, pastries), eggs, tea and others.

Imports of food products in January-September 2006 increased by 19% as compared to the similar period of the previous year. Imports of milk and dairy products increased by 64%, spaghetti, noodles and other - by 40%. Imports of wheat increased by 5% amounting to 197.8 thsd.tons (against 187.70 thsd.tons in the similar period of 2005), and imports of flour increased by 12% amounting to 266.4 thsd.tons (against 238.1 thsd.tons in January-September 2005).

Table 6: Exports and Imports of basic food products

(thsd.tons)

	January-September of 2005	January-September of 2006	January-September of 2005	January-September of 2006
	<i>Exports</i>		<i>Imports</i>	
<i>Food products</i>	89	97	606	724
of which				
wheat	-	-	187,7	197,8-
flour	-	0,0	238,1	266,4
sugar	0,0	-	80,5	114,7
spaghetti, noodles, elbow and other products	-	-	5,5	7,7
vegetable oil	0,0	-	32,4	32,8
milk and dairy products	0,0	-	1,1	1,8
eggs	-	-	2,8	7,0
tea	0,0	0,0	4,8	4,8
vegetables	28,4	30,6	0,2	0,4
fruits and berries	5,4	10,6	2,3	6,9
fruit and vegetable juices	12,0	10,3	1,0	1,6
canned vegetables, tomatoes	2,7	1,1	0,6	0,9
dry fruits	30,9	33,0	-	0,0
Share of food products in total volume, %	3,0	2,4	11,2	10,7

2.4. Availability of food per capita

The availability of food per capita is calculated using a food balance. A food balance shows for each basic food commodity, the total physical availability and utilization of that foodstuff over a given period of time, usually 1 year. **Total physical availability** is the sum of stocks at the beginning of the period, production and imports of that commodity in a given period of time. **Total utilization** covers use for human consumption + use as animal seed + seed + losses + exports + stocks at the end of the period. In any one period, the availability and utilization of the same commodity must

balance. Drawn up over a succession of years, food balances usually reveal a trend in total availability, imports, exports, and the availability of food for human consumption and for feed use. Dividing the annual amount of food available for human consumption by the population gives a key indicator of availability: the average availability of food per capita per year. This measure of food availability is a national average, which takes no account of households' access (i.e. ability to produce, purchase or otherwise obtain) to food.

Table 7: Consumption of foodstuff per capita

(kg / month)

	I half of 2005	I half of 2006
Bread products (expressed in grain)	12,6	12,3
Potatoes	2,7	2,4
Vegetables and melons	5,4	6,9
Fruits and berries	1,6	2,0
Sugar and confectionery items	0,8	0,9
Meat and meat products	0,5	0,6
Milk and dairy products	4,8	5,4
Eggs (pieces)	3	2
Vegetable oil	1,0	1,0
Fish and fish products	0,0	0,0

Source: Household budget survey

The analysis of food balances shows that food availability remains stable during last years.

More detailed information is available in Appendix 5 “Food balance”.

CHAPTER III. ACCESS TO FOOD

Access to food refers to the ability of households to obtain adequate safe and appropriate foods to meet their needs for a healthy and active life. Access can be through production for own consumption, market purchases or donations / transfers.

3.1. Retail prices

During 2006 retail prices of most basic foodstuffs increased significantly as compared to December 2005, except of flour, cotton oil and eggs (See Table 8, Appendix 4).

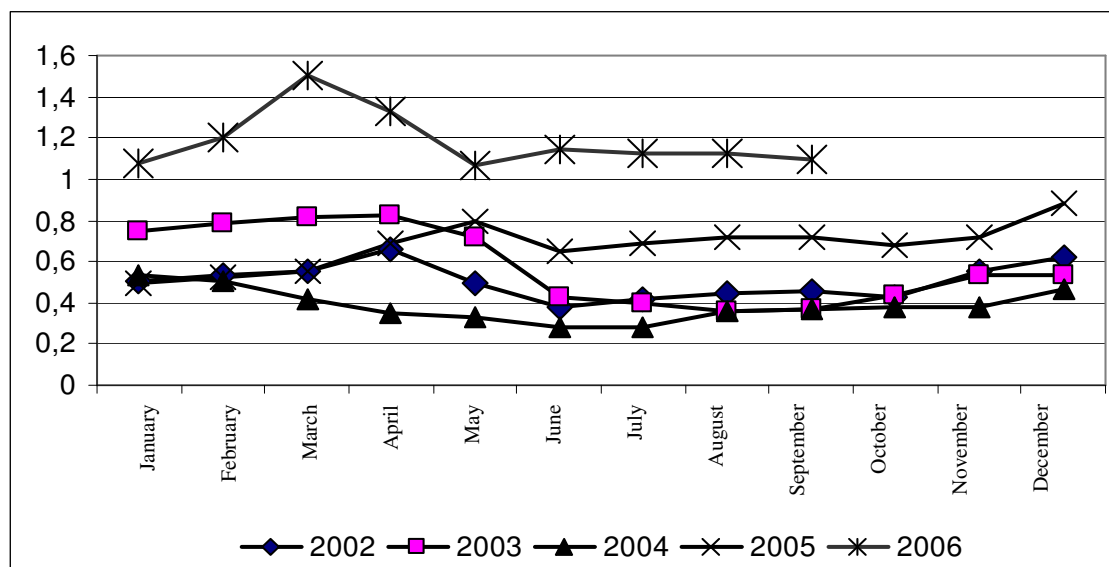
**Table 8: Average prices for some food products in consumer's sector
(average for republic)**

	2006						2005	
	Janury	March	June	July	August	September	September	December
Beef	7,51	7,54	7,81	8,40	8,73	8,94	7,09	7,51
Animal oil	11,35	11,35	11,42	11,42	11,54	11,69	9,87	11,39
Cotton oil	2,66	2,59	2,58	2,58	2,66	2,79	2,70	2,69
Milk	0,98	1,03	0,99	0,99	1,01	1,05	0,78	0,96
Eggs (10 pieces)	3,09	2,49	2,71	2,77	2,97	3,10	2,96	3,37
Sand sugar	1,90	2,46	2,51	2,53	2,53	2,50	1,73	1,75
Salt	0,35	0,35	0,35	0,35	0,35	0,35	0,35	0,35
Light wheat flour	0,98	0,95	0,94	0,94	0,94	0,95	0,99	0,98
Bread made from light wheat flour	1,00	1,00	1,00	1,00	1,00	1,00	1,00	1,00
Rice	2,30	2,38	2,73	2,71	2,77	2,88	2,47	2,30
Potatoes	1,08	1,17	1,14	1,12	1,12	1,10	0,72	0,88
Onion	0,54	0,67	0,50	0,71	0,71	0,62	0,31	0,46
Carrot	0,27	0,28	0,98	0,90	0,84	0,83	0,42	0,22
Apples	1,68	2,04	1,64	1,52	1,45	1,34	1,36	1,62
Vodka	5,57	5,82	5,88	5,86	5,86	5,86	5,57	5,57

During 2006, the highest increase in prices was registered for carrot (2.2 times), cabbage (74%), sand sugar (41.2%), onion (34.7%), rice (25.5%), potatoes (24.8%), beef (19%), mutton (16.8%), buckwheat (11.9%), pea (11.2%), live fish (10.4%), milk (8.9%), condensed milk (8.6%), poultry meat (8.2%), semi-smoked sausage (5.1%), semolina (4.9%), cotoon oil (3.9%), chocolate sweets (2.8%), animal oil (2.7%), margarine (2.5%), and cooked sausage (2.3%).

At the same time, the highest decrease in prices was registered for apples (26.6%), eggs (7.8%), evaporated milk formula (6.8%), light wheat flour (4.3%), pearl barley (2.9%), and pasta (1.2%).

Graphs 6: Average monthly retail prices for potatoes (somoni / kg)



Potatoes. Retail prices of potatoes are subject to seasonal fluctuations and also to fluctuations in supply and demand. The highest seasonal price is normally recorded in the second quarter of each year, prior to the first new harvest. However, during 2005 and the first quarter of 2006, the prices of potatoes were increasing continuously. In the second quarter of the current year, the prices of potatoes slightly decreased and amounted to 1.14 somoni per kg as of the end of June. The same trend was observed in the third quarter of 2006: the process of potatoes slightly decrease and amounted to 1.10 somoni per kg in September.

Flour. In 2005 and first half of 2006 the price of flour was subject to slow decrease. In the third quarter, the prices started to increase and amounted to 0.95 somoni per kg in September.

Beef and other kinds of meat. During 2005, the prices of *beef* were subject to increase. Thus, in January 2005 the prices of beef amounted to 6.64 somoni, and as of the end of 2005 they reached 7.6 somoni per kg. During January - September 2006, the prices increased by 19% as compared to December 2005 and amounted to 8.94 somoni per kg as of the end of September.

During 2005, the prices of *mutton* were also subject to increase. Thus, in January 2005 the prices of mutton amounted to 8.13 somoni, and as of the end of 2005 they reached 8.76 somoni per kg. During January - September 2006, the prices increased by 19.2% as compared to December 2005 and amounted to 10.44 somoni per kg as of the end of September.

3.2. Incomes and expenditures

The source of information on household incomes and expenditures is the Household Budget Survey which is conducted on the basis of a monthly survey of 925 households and is comprised of the following: demographic information on the composition of the family, housing and infrastructure, volume of consumption in the family including domestically manufactured items, economic activity in both agricultural and non-agricultural sectors.

3.2.1. Incomes

In 2005 cash incomes of population amounted to 44.20 somoni in a month per capita and increased by 21.5% (adjusted for inflation) as compared to 2004. In the first half of 2006 as compared to the first half of 2005, per capita cash income increased by 36.2% and amounted to 50.86 somoni. (See Table 9).

Table 9: Trends in population incomes and expenditures

	I half of 2005	I half of 2006
Average per capita incomes (somon / month)	37,35	50,86
Growth in real incomes (%)	119,9	124,1
Average monthly salary	81,57	107,70
Growth in real salary (%)	143,0	120,4
Average per capita expenditures (somon / month)	37,73	50,89
Growth in real expenditures (%)	120,8	123,0

Source: Household Budget Survey and current statistical data

The most important sources of cash incomes of households in the first half of 2006 continue to remain labor incomes - 56.5% and receipts from sales of agricultural products - 14.5%. In the first half of 2006, the gap between the average incomes of the highest and the lowest income deciles amounted to 8.4 times.

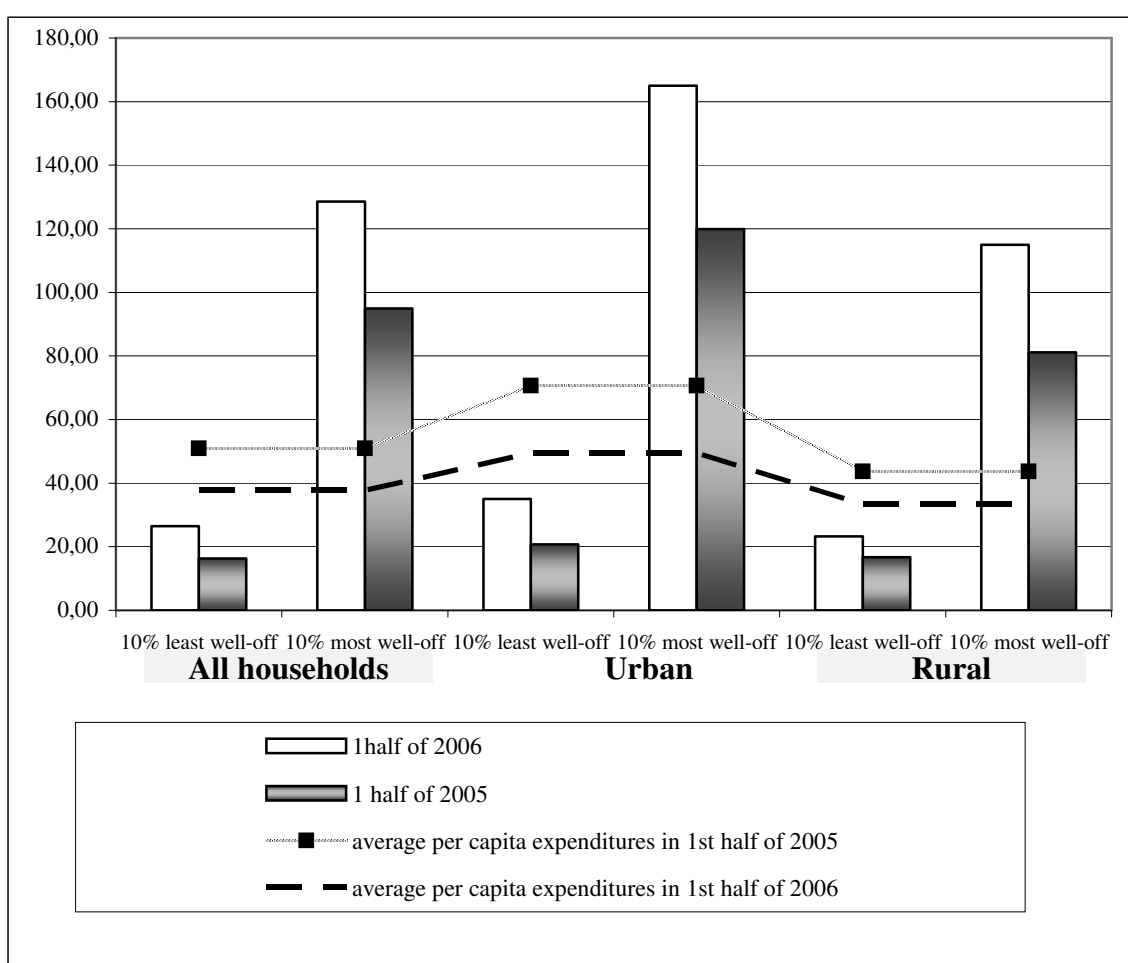
As of the end of September 2006, total arrears in salary payments for the republic made up 21.7 mln.somoni.

3.2.2. Expenditures

In 2005 and first half of 2006, average expenditures of population have risen mainly due to increase in prices (see Appendix 10 and Graph 8).

The gap between expenditures of the highest and the lowest deciles increased from 5.5 times in 2004 to 6.6 times in 2005. However in the first half of 2006, the gap decreased from 5.8 times to 4.9 times.

Graph 7: Growth of per capita expenditures by decile groups in the first half of 2005 and 2006



3.3. Poverty in the Republic of Tajikistan

Poverty and food & nutrition insecurity are closely related and form a vicious circle. Food and nutrition insecurity is defined as “When people lack secure access to sufficient amounts of safe and nutritious food for normal growth and development and an active and healthy life. It may be caused by the unavailability of food, insufficient purchasing power, inappropriate distribution, or inadequate use of food at the household level. Food

insecurity, poor conditions of health and sanitation, and inappropriate care and feeding practice are the major causes of poor nutritional status. Food insecurity may be chronic (persistent), seasonal or transitory.

The poor frequently suffer from any or all of the following characteristics: inadequate money, poor education, and few resources, poor access to employment opportunities, and have little power. They tend to live in poor housing and may have poor access to food, health services, sanitation. Without targeted actions to identify and alleviate poverty, the poor tend to become poorer and possibly more food insecure.

When determining poverty rate many factors that can be grouped into three groups should be considered:

- ◆ Incomes (total family income by sources)
- ◆ Wealth (movable assets and real estate, housing conditions, communal services)
- ◆ Population (access to primary health services and education, occupational activities, employment, unemployment)

Indicators of Poverty Reduction Strategy of the Republic of Tajikistan are given in Appendix 2.

3.4. Food insecurity: households spending more than 50% of expenditures on food

Food insecurity means a situation when people have no regular physical, economic or social access to adequate quantities of qualitative and safe food required for their nutrition, which meets their preferences for an active and healthy life.

The results of the Household Budget Survey show that the share of expenditures for food in the structure of total household's expenditures accounted for less than 70% and decreased by 7.7% as compared to the first half of 2005. The share of expenditures for food in urban area decreased by 8.8%, and in rural area - by 7.1%. At the same time, pensioners spend for food 68% of total consumer expenditures (Table 10).

Table 10: Share of consumer expenditures for food in total structure of household expenditures, in per cent

	I half of 2005	I half of 2006
Republic of Tajikistan	66,6	58,9
Urban	68,4	59,6
Rural	65,6	58,5

	I half of 2005	I half of 2006
Oblasts		
Dushanbe	84,3	55,8
GBAO		
Sogd oblast	61,9	54,4
Khatlon oblast	68,2	67,5
RRS	77,8	57,2
Vulnerable groups of population		
Households having 3 and more children	69,1	59,1
Pensioners	79,6	68,0

More detailed information on expenditures, incomes and deciles is available in Appendix 6.

CHAPTER IV. USE AND UTILIZATION

Use of food refers to the selection, composition, preparation and allocation of food within the family. Utilization of good refers to the ability of the human body to take and use food within the body. Food use covers knowledge of appropriate diets, and proper allocation of food. The ability of the body to utilize food is affected by its state of health and access to clean drinking water, access to basic health services, etc. The ultimate measure of food security is the nutritional status of the population.

4.1. Consumption of food products by the population

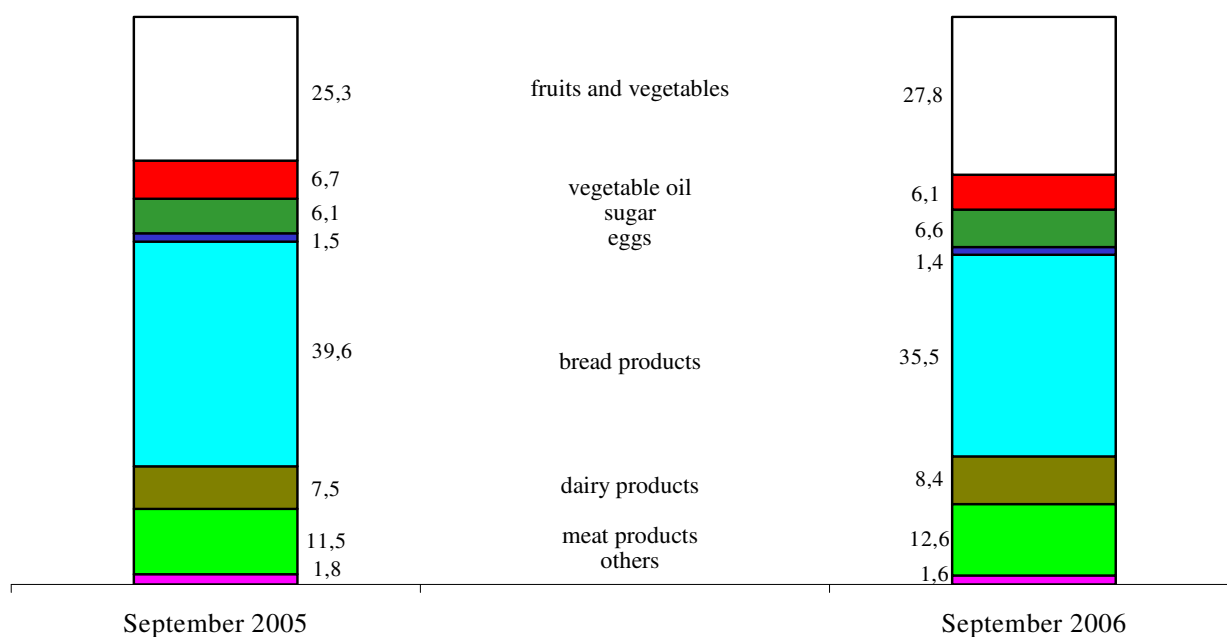
One of the measurements of food and nutritional insecurity is the calculation of daily calorie intake per one household member. The average daily calorie intake in 2005 was 2106.53 Kcal per capita, which is higher the recommendations of the World Health Organization (WHO) (2100 Kcal per a day). In the first half of 2006, the average daily calorie intake decreased to 2090.89 Kcal per capita.

In the first half of 2006, in all regions of Tajikistan consumption of bread and bread products exceeded approved medical norm by 17% and amounted on average to 73.8 kg per one household member.

In the first half of 2006, average consumption of potatoes in Tajikistan amounted to 14.4 kg per capita, vegetables and melons – 41.49 kg, milk and dairy products – 32.4 kg, meat and meat products – 3.6 kg, vegetable oil – 6 kg, eggs - 12 pieces, sugar and confectionery – 5.4 kg, and fruits – 12 kg. In total structure of household's expenditures for food, bread and bread products occupies the first place (36.0%).

The cost of *consumer's basket*, at actual consumption (according to household survey 2004) amounted to 43.83 somoni per one household member in prices of end of September 2006, while the cost of food basket according to rational nutritional standard would amount to 96.90 somoni.

Graph 8: Structure of consumer's basket in September 2005-2006
(as of the end of the month, in %, per one household member)



Appendix 9 shows the detailed information on per capita food consumption in the households of the Republic of Tajikistan.

Table 11: Nutritional values of foods consumed per a day (excluding beer and wine)

	Per one household member per a day	of which:		Per one household member per a day	of which:	
		urban area	rural area		urban area	rural area
	<i>1st half of 2005</i>			<i>1st half of 2006</i>		
Proteins, gr.	46,38	38,28	49,39	47,27	38,71	50,38
of which animal, gr.	6,14	4,62	6,70	7,18	5,62	7,45
Fats, gr.	44,36	43,84	44,51	45,45	45,53	45,40
of which animal, gr.	7,13	6,34	7,42	7,87	7,71	7,93
Carbohydrate, gr.	350,52	296,04	370,66	346,27	288,83	367,13
Caloric value of consumed food, k/calories	2015,19	1802,61	2093,16	2009,44	1784,64	2090,89
of which animal, gr.	110,44	85,04	119,90	123,89	103,00	131,43

4.2. Food security indicators not related to income

Food utilization also depends on the health status of the population as well as on the knowledge of hygiene and appropriate diets, on access to basic health services and utilities such as clean drinking water and sanitation.

4.2.1 Population morbidity

Table 12. Population morbidity caused by some specific infection diseases

(cases)

	2005.			2006		
	<i>1 quarter</i>	<i>2 quarter</i>	<i>3 quarter</i>	<i>1 quarter</i>	<i>2 quarter</i>	<i>3 quarter</i>
Total number of registered cases	10238	20973	40200	10851	21963	36010
of which:						
Acute enteric infections	4143	14710	35334	5450	16662	31302
of which:						
Bacterial dysentery (shigellosis)	192	373	1326	274	481	710
Typhoid fever	320	277	796	233	254	454
Tuberculosis, new cases	651	1655	1079	833	1266	1085
Brucellosis	206	791	403	263	641	373

Table 13. Morbidity of children (0-14) by some specific infection diseases

(cases)

	2005			2006		
	<i>1 quarter</i>	<i>2 quarter</i>	<i>3 quarter</i>	<i>1 quarter</i>	<i>2 quarter</i>	<i>3 quarter</i>
Total number of registered cases	6735	15028	28628	7456	15822	28357
of which:						
Acute enteric infections	3012	12719	26733	4417	13690	26305
of which:						
Bacterial dysentery (shigellosis)	63	147	483	105	171	349
Typhoid fever	156	112	301	87	94	141
Tuberculosis, new cases	38	119	66	44	102	69
Brucellosis	27	125	53	28	87	56

In the third quarter of 2006 incidence of infection diseases among population decreased by 10.4% as compared to the third quarter of 2005, of which incidence of infection diseases among children 0-14 years old decreased by 0.9%. Cases of acute enteric infections account for 87% of total number of infection diseases (among children of 0-14 years old this indicator reached 92.8%). As compared to the similar period of the previous year, number of cases of acute enteric infections decreased by 11.4% (1.6% for children aged 0-14).

Cases of bacterial dysentery decreased by 46.5% (by 27.7% among children aged 0-14). Number of registered cases of typhoid fever decreased by 43% (by 53% among children aged 0-14).

During the reporting period, increase in number of registered cases of tuberculosis by 0.6% (4.5% among children aged 0-14) as compared to the third quarter of 2005 was observed.

In the third quarter of 2006 as compared to the third quarter of 2005, number of cases of brucellosis among population decreased by 7.4%. At the same time, number of cases of brucellosis among children aged 0-14 increased by 5.7%.

4.2.2. Status of women and children in the Republic of Tajikistan

Based on preliminary results of Multiple Indicator Cluster Survey (MICS-3) conducted by the State Committee on Statistics of Tajikistan and UNICEF in 2005

4.2.2.1 Child and Infant Mortality

The infant mortality rate (calculated based on Brass method) is estimated at 65 per thousand, while the under-five mortality rate is 79 per thousand. Mortality rate is higher among males than females (92 versus 66). The highest level of infant and under-five mortality rate occurs in Khatlon (102 per thousand) while the lowest is seen in GBAO (54-59 per thousand). Child mortality rates are almost five times higher in children born to mothers with little or no secondary education as compared to those with higher levels of education. Children born into the poorer households (poorest quintile) interviewed are more likely to die during their first five years of life as compared to those living in wealthier environment.

4.2.2.2 Immunization

According to UNICEF and WHO guidelines, by 12 months old a child should receive; a BCG vaccination to protect against tuberculosis, three doses of DPT vaccination against

diphtheria, pertussis, and tetanus, three doses of the polio vaccine, and a measles vaccination. The vaccination schedule followed by the National Immunization Programme of Tajikistan provides all vaccinations mentioned above as well as vaccinations against hepatitis B (three doses). All vaccinations should be received during the first year of life, with the exception of measles which is given soon after the age of 12 months.

Approximately 95 percent of children aged 15-26 months received a BCG vaccination by the age of 12 months. The first dose of DPT was given to 91 percent of these same children with the percentage declining for subsequent doses of DPT to 87 percent for the second dose, and 82 percent for the third dose. Similarly, 92 percent of children received the first dose of Polio vaccine by age 12 months with this declining to 79 percent by the third dose. The coverage for measles vaccine by 15 months is 86 percent. Overall, the percentage of children who had all eight recommended vaccinations by their first birthday is low at only 69 percent, and a significant number of children (4 percent) never received any of the eight doses of vaccines. It is worth mentioning that none of the latter children had an immunization card available either at home or at the health facility.

Coverage with hepatitis B vaccine was analyzed separately taking into consideration its recent introduction (it was started in 2002 small scale in a few districts as well as the maternity hospital and has scaled up to cover all districts since 2003). Approximately 83 percent of children aged 15-26 months received the first dose of hepatitis B vaccine by the age of 12 months. As in the case of the polio and DPT coverage, the prevalence of subsequent doses of hepatitis B vaccine drops gradually to 77 percent for the second dose and 69 percent for the third dose.

4.2.2.3 Birth Registration

Birth registration is a fundamental means of securing these rights for children. The results of the survey shows that in Tajikistan the births of 88 percent of children less than five years of age have been registered. Children in urban areas are somewhat less likely to have their births registered (85 percent) than children in rural areas (90 percent). The lowest birth registration rates are observed in RRS and Dushanbe (81 and 83 percent). Among those whose children's births are not registered, cost was the main reason accounting for 40 percent of unregistered births while lack of time accounted for 17 percent. Missing other required documents (marriage certificate, passport) for birth registration was stated by 8 percent of respondents. Travel distance as well as lack of knowledge, both the need to register the birth and the place where registration is performed, appeared to explain almost one in ten unregistered births.

4.2.2.4 Nutritional Status

Weight for age indicator can be used as a measure of both acute and chronic malnutrition. Children whose weight for age is more than two standard deviations below the median of the reference population are considered moderately or severely underweight.

Children whose height for age is more than two standard deviations below the median of the reference population are considered short for their age and are classified as moderately or severely stunted. Stunting is a reflection of chronic malnutrition as a result of failure to receive adequate nutrition over a long period of time and/ or recurrent or chronic illness.

Children whose weight for height is more than two standard deviations below the median of the reference population are classified as moderately or severely wasted. Wasting is usually the result of a recent nutritional deficiency. The indicator may exhibit significant seasonal shifts associated with changes in the availability of food and/ or disease prevalence.

The age pattern shows that a higher percentage of children aged 12-23 months are underweight or wasted as compared to children of other ages. However, for stunting the levels reach a plateau during the second to fifth year of life. This pattern is expected and is related to the age at which many children cease to be breastfed and are continuously exposed to contamination from the water, food and the environment.

4.2.2.5 Water and Sanitation

Unsafe drinking water can be a significant carrier of diseases such as trachoma, cholera, typhoid, and schistosomiasis. In addition to its association with disease, access to drinking water may be particularly important for women and children, particularly in rural areas, who bear the primary responsibility for carrying water, often for long distances.

According to the WHO/UNICEF Joint Monitoring Programme for Water Supply and Sanitation Assessment, conducted in 2000, the population using improved drinking water sources are those who use any of the following types of supply: piped water, public tap, borehole/ tubewell, protected well, protected spring or rainwater. Overall, 70 percent of the population had access to improved drinking water sources – 93 percent in urban areas and 61 percent in rural areas. The source of drinking water for the population varied

strongly by region. The situation in the GBAO and Khatlon regions was considerably worse than in other areas; only 52-55 percent of the population in these regions got its drinking water from an improved source. In Dushanbe, 93 percent of the population used drinking water that was piped into their dwelling or into their yard or plot. However, it is worth mentioning that supplied pipe water, particularly that in Dushanbe, comes from surface sources without being exposed to routine cleaning procedures. In RRS 39 percent of population used piped water, while in Sogd and Khatlon that proportion was 27 and 28 percent respectively. In contrast, only about 15 percent of those residing in GBAO had piped water. In Sogd the most important source of drinking water was public taps while in Khatlon and GBAO four out of ten households used river or stream water (an unsafe source).

The percentage of the population using an improved source of drinking water has increased in comparison to the MICS 2000 when the figure was only 57 percent. Use of public taps or standpipes has increased from 8 to 23 percent while surface water use has decreased from 33 to 25 percent.

Improved sanitation facilities include: flush toilets connected to a sewage systems septic tanks or pit latrines, ventilated improved pit latrines, pit latrines with slabs, and composting toilets. 94 percent of the population of Tajikistan is living in households using improved sanitation facilities. This percentage is 97 in urban areas and 92 percent in rural areas. Residents of GBAO were much less likely than others to use improved facilities. Almost eight percent of household population there used bushes, fields, or had no facilities. In Dushanbe the most common facility were flush toilets with connection to a piped sewer system (73 percent), other areas of the country used pit latrines with slabs (62-86 percent).

4.2.2.6 Salt Iodization

Iodine Deficiency Disorders (IDD) is the leading cause of preventable mental retardation and impaired psychomotor development in young children. In its most extreme form, iodine deficiency causes cretinism. It also increases the risks of stillbirth and miscarriage in pregnant women. Iodine deficiency is most commonly associated with visible goitres.

According to MICS-2000, proportion of the population consuming an adequate amount of iodized salt was as low as 20 percent. Results of MICS-2003 showed that in 46 percent of households, salt was found to contain 15 parts per million (PPM) or more of iodine, that reveal an important progress made over the past five years.

METHODOLOGY

1. Methodology of food security analysis

“Food and nutrition security is achieved if adequate food (quantity, safety, quality, social-cultural acceptance) is available and accessible for and satisfactory used and utilized by all individuals at all time to live a healthy and active life”.

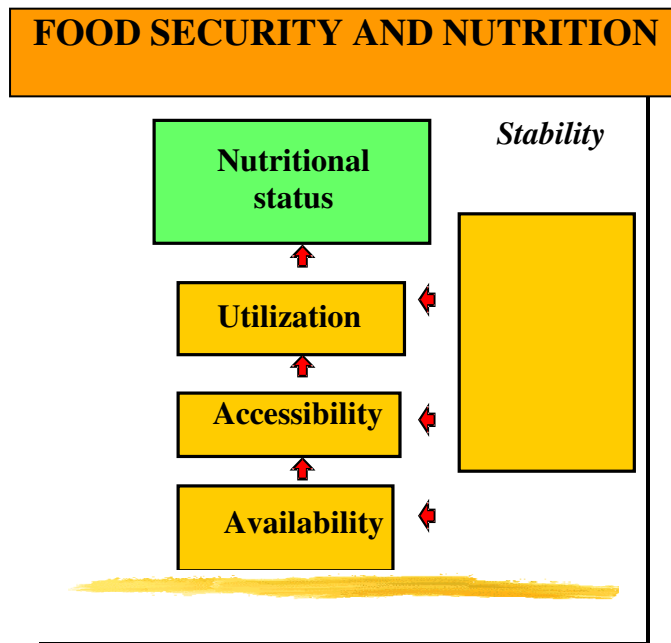
Availability physical existence of quantitatively and qualitatively adequate and safe food items.

Access: all households and household members have sufficient resources to obtain appropriate food (*through* production, purchase or donation)

Use and utilization: adequate knowledge, health and sanitation to enable the human body to digest and utilize that food

Stability: continuous ensuring of availability of, access to and appropriate use and utilization of food. If not, individuals will suffer from chronic or transitory food insecurity

For case of reference the four pillars of food and nutrition security are pictured below:



All four dimensions need to be fulfilled if there is to be food and nutrition security. As individuals and households live in a society, the 4 dimensions of FNS need to co-exist at all levels, from the individual and household level (**micro level**), to the community (village, rayon, oblast) level, representing the **meso level**, and the nation and global level

(macro level).

To monitor food security it is necessary to select relevant indicators and to measure these indicators at regular intervals.

2. Food balance methodology

Food balances for basic foodstuffs are compiled in natural terms.

In the course of the compilation of the food balance, the closing stocks as of December 31 in one year become the opening stocks on January 1 in the following year. With regard to imports and exports of products, the official data was used, in respect of production preliminary data.

Seed use is calculated on areas sown with agricultural crops as well as actual amount of seeds used for 1 ha. The calculation of lost was made according to the official norms.

In order to determine the number of eggs for the incubation the actual number of poultry offspring as well as norms on the number of chicken from the eggs laid for incubation.

The calculation of the volume of food products consumed by population as well as expenses on animal feeding was based on the data obtained during the survey of 925 households. The calculation of meat consumption also included the meat consumed in the course of observing national traditions (funeral, weddings, religious feasts, etc.)

Glossary

The *unemployed* - people of 16 and more who during period under review had no job (profitable occupation); were in search for a job i.e. applied to public employment offices or used alternative ways of job finding as well as were ready to start working.

Gross Domestic Product (GDP) - a general indicator of economic activity which is calculated in basic and market prices (nominal GDP) and in comparable prices (real GDP).

Consumer price index on goods and paid services to the population (CPI) - characterizes the change in the general price level for goods and services over time. The index measures the correlation of the value of actually set of goods and services during the given period to the value thereof during the basic period.

Average nominal monthly salary is calculated by dividing actually accrued salary fund to the staff and part-time employees by the number used for the calculation of average salary and number of months in a year during corresponding period.

Average daily per capita calorie intake measure the calories in the consumed food products per one household member as well as chemical composition in protein and fats.

Official unemployment rate - the ratio of people officially registered as unemployed to the number of economically active population, expressed in per cent.

List of abbreviations

GDP	Gross Domestic Product
GBAO	Gorno-Badakhshan Autonomous Oblast
CPI	Consumer price index on goods and paid services to the population
RRS	Regions of republican subordination
MDG	Millennium Development Goals

Appendix 1

Review of hydro meteorological conditions on the territory of the Republic of Tajikistan during the third quarter of 2006

Meteorological conditions

The July mean air temperature on the most part of the republic exceeded the norm by 0.2-1.6°C, and only in Soghd region and Yavan district was below the norm by 0.5-1.2°C, as follows: 25-35°C in valleys, 15-20°C in mountains, up to 23°C in the western part of GBAO, and 13-15°C in high altitudes.

The first and third decades of the month were characterized by hot weather, however, the hottest periods were on 5-10, 20-27, and 29-31 July with day-time air temperature at 39-44°C, which is near absolute maximum air temperature in July. The daily average air temperature during this period exceeded the norm by 2-3°C.

The second decade was mainly characterized by decreased temperature conditions. The coolest weather was registered on 12-16 July, when day-time air temperature in valleys fell to 29-35°C. The daily average air temperature during this period was below the norm by 3-8°C.

Not heavy rainfalls were observed during 1-5 days. The most number of rainy days was registered in Soghd region and western part of GBAO (3-5 days). 10-12 and 24-27 July were characterized by dust storms and mists in valleys of Khatlon regions and RRS, which were caused by entry of cold air from north-westward.

The **August** of this year was dry and hot. The mean monthly air temperature in the most of regions exceeded the norm by 1-3°C and was: 25-30°C in valleys, 24-26°C in foothills, 17-25°C in mountains, and 12-15 degrees in high altitudes. The hottest weather was observed in the first decade of the month with day-time air temperature at 40-42°C, and daily average temperature exceeding the norm by 1-3°C.

On 16-18 August, temporary drop in temperature was registered with maximum air temperature not exceeding 33-35°C. The daily average air temperature during this period was below the norm by 1-2°C.

In general, no rainfalls were observed during the month on the territory of the republic. Slight rains were registered only on 4, 6, 9. 13-15 August in some mountain and high mountain regions. The amount of precipitations was 1-14 mm, which is below the norm

The **September** mean air temperature was below the norm by 1°C all over the territory of the republic, and near the norm in high altitudes: 18-23°C in valleys, 12-17°C in mountains, and 6-8°C in high altitudes.

The warmest periods were 16-18 and 28-30 September, when air temperature increased up to 32-37°C. In mountains the warmest weather was observed in the mid-month with average air temperature at 29-31°C.

On 19-20 September, further to entry of cold air from the territory of Russia, the day-time air temperature in valleys dropped by 5-10°C and amounted to 18-22°C. In mountains sharp fall of temperature was not observed.

Rainfalls in September were seldom. Amount of precipitation was 00-01 mm in valleys and foothills, and 1-5 mm in mountains. Overall monthly amount of precipitation was below the norm.

The main hazardous weather in September was in the form of fogs (6 days) and strengthened wind (15-20 m/s), which was observed in Anzob, Rushan, Humragi, and Hudjan districts.

Hydrological conditions

In **July**, water content of most rivers was subject to fluctuations. Increase in flow of rivers was registered in the first and third decades of the month due to increase in air temperature which caused increase in glacier runoff. The highest increase in flow was registered on Obihingou river (above the norm by 107%). Flow of Vakhsh and Gunt rivers was below the norm (85% and 97%). During the month, water content of all rivers, including Vakhsh and Gunt, decreased (73-75% below the norm). Water level on Pyandj river was below the norm by 0.76 sm (as compared to the corresponding period of the previous year).

In the first decade of the **August**, water content of most rivers was subject to fluctuations. Beginning from second decade of the month, water content of the rivers gradually decreased. Water discharge of the most rivers was below the norm by 80-99%, and below the last years values by 70-80%.

During the month, the level of Sarez lake increased by 301 sm and amounted to 2665 sm. Content of Nurek reservoir increased by 2.017 mln.m³ and amounted to 10544 mln.m³, which is higher than the level of the previous year by 0.075 mln.m³.

During August, water level in Kairakum reservoir decreased by 0.685 mln.m³ and

amounted to 1009 mln.m³, which is less than the level of the previous year by 0.503 mln.m³.

Gradual decrease in water content on the most rivers of the republic was registered in the **September**. Monthly water discharge of the most rivers was below and near the norm (70-100%), and below and within the last years values (80-100%).

During the month, the level of Sarez lake decreased by 31 sm and amounted to 2634 sm. Content of Nurek reservoir decreased by 0.103 mln.m³ and amounted to 10441 mln.m³, which is less than the level of the previous year by 0.077 mln.m³. Water level in Kairakum reservoir increased by 0.171 mln.m³ and amounted to 1180 mln.m³, which is less than the level of the previous year by 0.287 mln.m³.

Review of avalanches and mudflows

No avalanches were observed and forecasted in **July** due to the lack of snow cover and snowfalls. No mudflows were registered and forecasted due to lack of long-lasting and intensive rains.

No avalanches were observed and forecasted in **August** due to the lack of snow cover and snowfalls.

In August, one mudflow with total duration of 4 days was forecasted (proved by 100%). On 11-14 August there was a warning on possible glacial mudflow. On 13 August, 9.00 a.m. on water measuring bridge Sarypul (Rasht district), the increase of water content by 6-7 meters was registered. This unexpected freshet washed away a bridge between Rasht and Tajikabad and two foot-bridges in Yangolik-Vrangam settlements and Runov settlement (Rasht district). A highway Dushanbe - Djirgatal near Nimich settlement was washed away, and 40-50 ha of fields were overwatered. Two hydraulic power stations were harmed. All flood-plain of Suhrob river in Rasht districts was overwatered from 9.00 a.m. to 8.00 p.m. on 13 August. There were no victims. This freshet occurred on Muksu river and was caused by break on pre-glacial lake. Possibly it occurred on Fortambek glacier on the northern flank of Petr Perviy range. Usually, a lot of such lakes can be observed near Fortambek glacier.

No other mudflows were registered in August.

No avalanches were observed and forecasted in **September** due to the lack of snow cover and snowfalls. No mudflows were registered and forecasted due to lack of long-lasting and intensive rains.

Appendix 2

PRSP Indicators in the Republic of Tajikistan

Sector	Goals	Indicators	Indicators of SCS					
			1990 ⁰	1999	2003	2004	2005	9 months. 2006 ¹
Complete PRS	Increase real incomes in the country	GDP per capita (USD)	-	178,2	236,7	309,2	337,2	x
	Improved level of living of poorest stratum of population	Employment rate among able-bodied population (%)	-	55,6	51,7	55,3	54,3	x
Macroeconomic management	Sequent macroeconomic management oriented to reaching economic growth required for increase of population incomes	Real GDP growth (%)	98,4*	103,7	110,2	110,6	106,7	107,6
		Inflation rate (%)	-	26,3	13,7	5,7	7,1	9,0
		Credits provided by bank sector (as percentage of GDP)	...	3,6	3,3	7,4	7,3	8,6
		Share of private sector in GDP (%)	-	29,3	39,1	39,8	41,5	x
		Direct foreign investment (in % to GDP)	x	0,2	1,7	1,1	2,4	...
		State revenues (in % to GDP)	46,8	18,6	17,3	17,9	18,1	17,8
		Public expenditures (in % to GDP)	43,4	17,6	16,2	17,7	19,6	17,5
		Public expenditures for health sector (in % to GDP)	4,8	1,0	0,9	0,9	1,1	1,1
		Public expenditures for education (in % to GDP)	10,4	2,1	2,41	2,7	3,5	3,5
		Public expenditures for social protection and insurance ³⁾ (in % to GDP)	-	0,2 ²⁾	2,3	2,6	3,3	3,2
		Public expenditures for environment protection (in % to GDP)	0,03	-	0,04	0,05	0,04	0,03
		Public expenditures for agriculture (in % to GDP)			0,5	0,5	0,5	0,5
		Public expenditures for irrigation (in % to GDP)			0,2	0,1	0,12	0,1
		Public expenditures for infrastructure (transport and communication) ⁴⁾ (in % to GDP)			1,2	1,4	1,1	1,0
		Average monthly salary in public sector as compared to private sector (%)		64,5	146,9	126,5	166,6	108,31
		Registered unemployment rate		3,0	2,4	2,0	2,0	2,4
Population incomes, according to households' survey, per one household member (somon)			35,38	44,42	55,48	...		
Reforms in public administration	Creation of effective judicial service	Average salary of judge (somon)		20,9	50,34	54,36	91,16	x

Sector	Goals	Indicators	Indicators of SCS					
			1990 ⁰	1999	2003	2004	2005	9 months. 2006 ¹
Social protection	Guaranteed incomes of poor populations, ensuring effectiveness of targeted assistance	Number of employed per one pensioner (persons)	2,2	3,10	3,53	3,59	3,84	x
		Average monthly pension (somon)	x	3,53	13,07	16,92	27,51	x
		Number of pensioners receiving disability pension (thsd.persons)	48,0	67,8	78,2	79,1	84,1	x
Education	Increase of literacy rate and level of general education of population	Coverage by primary education ratio [7-10 years old (1-4 forms)]	90,9	97,4	99,6	99,2	99,0	x
		Coverage by basic education ratio [7-15 years old (1-9 forms)]	94,8	89,1	95,4	95,4	95,6	x
		Coverage by secondary education ratio [16-17 years old (10-11 forms)]	x	35,7	42,0	46,1	46,4	x
	Ensuring access to primary and secondary education	Number of pupils per 1 teacher						
		Schools	14	15,1	16,2	17	17	x
		institutions of higher educations-specialised secondary educational establishment	12,8 11,5	13,4 11	16,0 11,1	16,2 11,0	17,4 13	
	Eliminate gender disparity in access to education	Proportion of boys and girls in primary school:						
		boys	51,2	52,6	52,0	51,8	52,0	x
		girls	48,8	47,4	48,0	48,2	48,0	
		in secondary school:						
boys		49,8	59,6	60,5	60,7	51,2		
girls		50,2	40,4	39,5	39,3	38,8		
Health care	Improved quality of public health services and improved access of poor population to health services	Maternal mortality	42,9	44,2	37,7	39,0	33,1	x
		Infant mortality	43,3	65 ⁵	x
		Mortality of children under 5 years old	65,0	79 ⁵	x
		Share of births delivered with assistance of skilled medical personnel, %	-	66,6	71,4	75,1	76,2	x
		Percentage of children aged 1 year who received DPT vaccinations	86,8	98,7	96,3	96,0	94,5	x
		Number of HIV cases	-	-	119	317	506	544
		Number of tuberculosis cases per 100000 population	44,4	42,1	66,5	66,6	60,1	45,5

Sector	Goals	Indicators	Indicators of SCS					9 months. 2006 ¹
			1990 ⁰	1999	2003	2004	2005	
		Number of malaria cases per 100000 population	-	222,0	71,6	48,4	29,1	14,0
		Number of typhoid fever and paratyphoid ABC per 100000 population	48,0	122,0	48,9	38,5	29,4	13,6
		Number of measles cases per 100000 population	130,4	3	33	0,3	0	0,3
Agriculture and Irrigation	Ensure effective use of land and water, as well as fair access of poor population to land and water	Share of population engaged in agricultural sector, %	-	64,4	67,6	66,6	67,5	69,4
		Wages and salary in agricultural sector, somoni	-	5,38	27,00	35,63	38,39	36,35
Development of private sector	Create favorable conditions for private sector functioning	Receipt of funds from privatization by state budget, mln.somoni	-	17,7	21,7	35,9	43,5	35,7
Infrastructure	Ensure access to steady and satisfactory infrastructure public services for the poorest stratum of population	Number of telephone lines per 100 residents	-	3,51	3,65	3,83	3,29	3,36
		Number of mobile (cell) phones per 100 residents	-	...	0,73	2,5	5,9	10,1
		Number of Internet users per 1000 inhabitants	-	...	0,2	0,3	2,8	0,68
		Share of population having continuous access to potable water (urban and rural)	-	44%	-	-	-	x
Environment and tourism	Eliminate serious environmental threats to population health and safety of ecosystem	CO ₂ emission per capita, and use of destroying chlorine and fluorine containing compounds (metric tons of ozone depleters)	-	0,007	0,002	0,001	0,001	x
	Promote establishing of positive image of the country as well as development of tourism	Number of tourists, of which foreigners	-	/-	/887	/401	/318	/445

0 – reference year for MDG

1 – preliminary data of SCS

² - social security

³ - social protection and social insurance

⁴ – data on energy are reflected in item on «данные по энергетике отражены в статье «Fuel and energy complex»

* - for 1992

⁵ – data obtained from MICS3

APPENDIX 3. CHANGES IN AVERAGE WHOLESALE PRICES (SUPPLY) IN TAJIKISTAN (somon / kg)

Regions	I quarter			II quarter			III quarter			IV quarter		
	2004	2005	2006	2004	2005	2006	2004	2005	2006		2004	2005
	Potatoes											
GBAO	-	-	-	0,30	0,30	-	0,27	0,30	-		0,29	0,40
Sogd Oblast	0,16	0,12	0,25	0,26	0,13	0,23	0,11	0,10	0,30		0,12	0,31
Khatlon Oblast	0,5	0,43	0,38	0,27	0,30	0,35	0,18	0,43	0,37		0,17	0,31
RRS	0,50	0,30	0,64	0,26	0,29	0,70	0,19	0,37	0,50		0,20	0,40
Average in the Republic	0,18	0,13	0,28	0,27	0,19	0,35	0,17	0,29	0,44		0,18	0,36
	Milk											
GBAO	0,50	-	-	0,50	0,50	1,0	0,45	-	-		0,44	-
Sogd Oblast	0,30	0,39	0,45	0,30	0,38	0,45	0,28	0,37	0,43		0,27	0,37
Khatlon Oblast	0,19	0,17	0,24	0,24	0,19	0,27	0,20	0,21	0,30		0,18	0,23
RRS	0,44	0,61	0,74	0,44	0,57	0,73	0,44	0,58	0,72		0,43	0,61
Average in the Republic	0,32	0,42	0,51	0,32	0,41	0,52	0,31	0,41	0,51		0,29	0,41
	Wheat											
GBAO	0,45	-	0,44	0,45	-	0,19	0,45	0,60	0,50		0,45	0,60
Sogd Oblast	0,25	0,39	0,43	0,30	0,38	0,37	0,26	0,30	0,42		0,30	0,37
Khatlon Oblast	0,46	0,62	0,54	0,43	0,29	0,33	0,28	0,28	0,33		0,32	0,30
RRS	0,35	0,54	0,48	0,36	0,46	0,47	0,33	0,60	0,45		0,36	0,46
Average in the Republic	0,32	0,42	0,44	0,33	0,34	0,35	0,28	0,31	0,39		0,33	0,36

APPENDIX 4. CHANGES IN AVERAGE CONSUMER PRICES IN TAJIKISTAN IN 2004-2006 (somon / kg)

	I quarter			II quarter			III quarter		
	2004	2005	2006	2004	2005	2006	2004	2005	2006
	Potatoes								
Dushanbe	0,55	0,62	1,25	0,38	0,85	1,23	0,39	0,77	1,20
Sogd Oblast	0,32	0,32	1,29	0,24	0,58	1,20	0,26	0,56	0,94
Khatlon Oblast	0,58	0,62	1,25	0,34	0,72	1,13	0,37	0,79	1,20
Average in the Republic	0,48	0,52	1,26	0,32	0,71	1,19	0,34	0,71	1,11
	Milk								
Dushanbe	1,15	1,37	1,80	1,15	1,40	1,77	1,15	1,40	1,80
Sogd Oblast	0,45	0,60	0,71	0,47	0,57	0,67	0,45	0,58	0,67
Khatlon Oblast	0,50	0,52	0,68	0,50	0,48	0,73	0,50	0,49	0,75
Average in the Republic	0,70	0,83	1,06	0,71	0,82	1,06	0,70	0,82	1,08
	Flour of 1st grade								
Dushanbe	1,04	1,05	1,00	1,04	1,05	0,98	1,04	1,03	0,98
Sogd Oblast	0,90	0,95	0,90	0,90	0,94	0,89	0,90	0,90	0,93
Khatlon Oblast	1,09	1,05	0,99	1,05	1,05	0,96	1,05	1,03	0,93
Average in the Republic	1,01	1,02	0,96	1,00	1,01	0,94	1,00	0,99	0,95
	Wheat								
Dushanbe	0,60	0,65	0,75	0,65	0,75	0,78	0,67	0,84	0,80
Sogd Oblast	0,47	0,59	0,48	0,53	0,59	0,49	0,53	0,53	0,63
Khatlon Oblast	0,53	0,70	0,65	0,52	0,70	0,65	0,58	0,59	0,63
Average in the Republic	0,53	0,65	0,62	0,57	0,68	0,64	0,59	0,65	0,69
	Rice								
Dushanbe	1,39	1,67	2,57	1,50	2,03	2,80	1,63	2,65	3,13
Sogd Oblast	1,26	1,44	2,23	1,28	1,72	2,44	1,35	2,29	2,66
Khatlon Oblast	1,25	1,44	2,23	1,27	1,80	2,54	1,35	2,35	2,65
Average in the Republic	1,30	1,52	2,34	1,35	1,85	2,59	1,44	2,43	2,82
	Sugar								
Dushanbe	1,44	1,53	2,20	1,42	1,67	2,50	1,59	1,75	2,55
Sogd Oblast	1,41	1,54	2,18	1,50	1,69	2,50	1,57	1,70	2,52
Khatlon Oblast	1,47	1,53	2,18	1,47	1,67	2,46	1,61	1,74	2,49
Average in the Republic	1,44	1,54	2,19	1,46	1,68	2,49	1,59	1,73	2,52

	I quarter			II quarter			III quarter		
	2004	2005	2006	2004	2005	2006	2004	2005	2006
	Onions								
Dushanbe	0,58	0,64	0,72	0,40	0,52	0,63	0,32	0,38	0,77
Sogd Oblast	0,28	0,34	0,38	0,33	0,42	0,49	0,24	0,23	0,57
Khatlon Oblast	0,56	0,65	0,68	0,38	0,52	0,55	0,30	0,31	0,72
Average in the Republic	0,47	0,54	0,60	0,37	0,49	0,56	0,28	0,31	0,69
	Cotton oil								
Dushanbe	2,75	2,82	2,80	2,75	2,80	2,75	2,78	2,80	2,72
Sogd Oblast	2,79	2,82	2,55	2,88	2,73	2,46	2,94	2,73	2,74
Khatlon Oblast	2,52	2,60	2,56	2,49	2,65	2,52	2,59	2,60	2,60
Average in the Republic	2,69	2,74	2,64	2,71	2,69	2,58	2,77	2,71	2,69
	Mutton								
Dushanbe	8,30	8,25	9,00	8,50	8,25	9,83	8,33	8,33	10,17
Sogd Oblast	8,43	8,43	9,42	8,40	8,19	9,80	8,39	8,49	10,83
Khatlon Oblast	7,49	7,67	8,13	7,70	7,37	8,53	7,73	7,50	9,24
Average in the Republic	8,07	8,12	8,85	8,20	7,93	9,39	8,15	8,11	10,08
	Beef								
Dushanbe	7,00	7,00	8,50	7,00	7,27	8,58	7,00	7,75	9,83
Sogd Oblast	6,43	6,47	7,30	6,30	6,21	7,47	6,30	6,55	8,32
Khatlon Oblast	6,44	6,40	7,02	6,46	6,30	7,23	6,44	6,59	8,20
Average in the Republic	6,62	6,62	7,61	6,59	6,59	7,76	6,58	6,96	8,78
	Chicken meet								
Dushanbe	6,22	6,22	6,38	6,22	6,22	6,22	6,22	6,22	7,17
Sogd Oblast	5,50	5,64	6,22	4,60	5,53	6,78	5,00	5,86	6,89
Khatlon Oblast	6,37	6,33	6,59	6,37	6,33	6,33	6,37	6,33	7,26
Average in the Republic	6,03	6,06	6,33	5,73	6,03	6,44	5,86	6,14	7,10
	Eggs (10 pieces)								
Dushanbe	2,53	3,03	2,80	2,50	2,93	2,87	2,97	3,27	3,03
Sogd Oblast	2,23	2,82	2,88	2,00	2,23	2,42	2,32	2,61	2,96
Khatlon Oblast	2,66	3,00	2,65	2,50	3,00	2,64	2,63	2,85	2,87
Average in the Republic	2,47	2,95	2,87	2,33	2,72	2,64	2,64	2,91	2,96

APPENDIX 5. FOOD BALANCE OF THE REPUBLIC OF TAJIKISTAN for 2002-2005

	Basic foodstuffs (physical quantities)	Bread and bread products in grain, thousand tons				Potatoes fresh, thousand tons				Vegetables and melons fresh, thousand tons				Fruits and berries fresh, thousand tons				Sugar and confectionery, in sugar, thousand tons			
		2002	2003	2004	2005	2002	2003	2004	2005	2002	2003	2004	2005	2002	2003	2004	2005	2002	2003	2004	2005
1.	Stocks at the beginning of the period	221,0	223,2	215,7	121,8	21,0	87,8	234,9	264,7	53,4	15,9	95,0	21,6	46,3	32,3	13,0	3,3	4,0	10,4	47,4	20,6
2.	Food production in the country (+)	544,6	660,2	679,0	805,0	356,7	473,3	527,2	555,1	584,9	721,5	829,8	888,8	228,6	117,3	237,6	237,6	0,3	0,4	1,6	1,9
3.	Food imports (+)	465,4	353,3	276,8	725,5	0,2	0,9	0,6	0,5	0,5	0,3	2,4	39,7	0,9	0,3	4,8	5,6	59,7	95,8	109,1	123,2
	Availability (1-3) (+)	1231,0	1236,7	1171,5	1652,3	377,9	562,0	762,7	820,3	638,8	737,7	927,2	950,1	275,8	149,9	255,4	246,5	64,0	106,6	158,1	145,7
4.	Used for seed (-)	60,8	60,0	107,2	140	90,4	104,0	162,2	84,0	-	-	-	-	-	-	-	-	-	-	-	-
5.	Used as fodder (-)	-	-	-	4,0	-	-	-	-	-	-	-	-	-	-	-	-	-	-	-	-
6.	Losses (-)	11,0	12,0	12,1	5,0	19,0	25,0	30,0	31,0	63,0	78,0	100,0	1,7	14,0	7,0	9,1	1,2	-	-	-	-
7.	Food exports (-)	-	0,3	-	0,3	-	0,3	0,3	0,3	36,5	44,2	90,6	37,5	18,5	55,1	57,9	37,6	-	-	-	0,028
8.	Availability for consumption by the population (-)	891,0	908,7	927	891,4	180,4	197,8	304,5	300,0	523,4	520,5	715,0	717,8	211,0	74,8	172,4	205,2	53,6	59,2	109,6	59,8
9.	Other utilization (-)	45	40,0	3,4	1,2	-	-	1,0	1,2	-	-	-	0,9	-	-	12,7	-	-	-	27,9	4,0
	Consumption (4-9) (-)	1007,8	1021	1049,7	1041,9	289,8	327,1	498,0	416,5	622,9	642,7	905,6	757,9	243,5	136,9	252,1	244,0	53,6	59,2	137,5	63,8
10	Stocks at the end of the period	223,2	215,7	121,8	610,4	88,1	234,9	264,7	403,8	15,9	95,0	21,6	192,2	32,3	13,0	3,3	2,5	10,4	47,4	20,6	81,9

	Basic foodstuffs (physical quantities)	Meat and meat products in carcass weight, thousand tons				Milk and dairy products, in milk, thousand tons				Eggs, million				Vegetable oil, thousand tons				Fish and fish products, tons			
		2002	2003	2004	2005	2002	2003	2004	2005	2002	2003	2004	2005	2002	2003	2004	2005	2002	2003	2004	2005
1.	Stocks at the beginning of the period	1,0	0,2	8,7	0,6	-	1,9	0,6	0,6	-	1,0	3,3	1,0	0,2	0,7	0,9	5,0	-	11,0	11,0	6,7
2.	Food production in the country (+)	39,4	49,1	48,2	53,5	416,8	459,1	489,5	533,0	46,0	57,1	77,7	98,7	31,3	36,0	28,2	22,9	324	234	146,7	178,5
3.	Food imports (+)	1,2	3,6	6,2	12,4	0,6	0,8	1,6	12,4	11,0	43,2	48,0	78,4	15,4	1,2	36,1	56,0	77	200	173	269,0
	Availability (1-3) (+)	41,6	52,9	63,1	66,5	417,4	461,8	491,7	546,0	57,0	101,3	129,0	178,1	46,9	37,9	65,2	83,9	401	445	330,7	454,2
4.	Used for seed (-)	-	-	-	-	-	-	-	-	-	-	-	-	-	-	-	-	-	-	-	-
5.	Used as fodder (-)	-	-	-	-	-	-	-	-	-	-	-	-	-	-	-	-	-	-	-	-
6.	Losses (-)	-	-	-	-	-	-	-	-	-	-	-	-	-	-	-	-	-	-	-	-
7.	Food exports (-)	-	-	-	-	-	-	0,1	-	-	-	-	-	-	-	-	0,2	-	-	-	-
8.	Availability for consumption by the population (-)	41,4	44,2	62,5	63,2	415,5	461,2	489,0	543,5	56,0	98,0	127,2	176,5	46,2	37,0	60,2	69,8	390,0	434	324,0	449,3
9.	Other utilization (-)	-	-	-	-	-	-	2,0	1,6	-	-	0,8	0,4	-	-	-	3,5	-	-	-	-
	Consumption (4-9) (-)	41,4	44,2	62,5	63,2	415,5	461,2	491,1	545,1	56,0	98,0	128,0	176,9	46,2	37,0	60,2	73,5	390,0	434	324,0	449,3
10.	Stocks at the end of the period	0,2	8,7	0,6	3,3	1,9	0,6	0,6	0,9	1,0	3,3	1,0	1,2	0,7	0,9	5,0	10,4	11,0	11,0	6,7	4,9

FOOD BALANCE OF THE REPUBLIC OF TAJIKISTAN for 2005, by quarters

	Basic foodstuffs (physical quantities)	Bread and bread products in grain, thousand tons				Potatoes fresh, thousand tons				Vegetables and melons fresh, thousand tons				Fruits and berries fresh, thousand tons				Sugar and confectionery, in sugar, thousand tons			
		I q.	II q.	III q.	IV q.	I q.	II q.	III q.	IV q.	I q.	II q.	III q.	IV q.	I q.	II q.	III q.	IV q.	I q.	II q.	III q.	IV q.
1.	Stocks at the beginning of the period	121,8	65,4	271,1	638,7	264,7	101,2	137,9	293,3	21,6	2,0	6,0	248,0	3,3	0,8	0,8	53,7	20,6	13,5	37,2	67,8
2.	Food production in the country (+)	-	174	439,0	192,0	-	73,9	236,6	244,6	0,4	89,6	516,5	282,3	-	14,6	115,0	109,4	0,4	0,8	0,7	-
3.	Food imports (+)	100,5	257,7	154,9	222,4	-	0,2	-	0,3	0,2	0,7	-	38,8	1,9	-	0,5	3,2	18,5	33,1	42,9	28,7
	Availability (1-3) (+)	222,3	497,1	865,0	1053,1	264,7	175,3	374,5	538,2	22,2	92,3	522,5	569,1	5,2	15,4	116,3	166,3	39,5	47,4	80,8	96,5
4.	Used for seed (-)	80,0	-	-	60	80,0	-	-	4,0	-	-	-	-	-	-	-	-	-	-	-	-
5.	Used as fodder (-)	-	-	-	-	-	-	-	-	-	-	-	-	-	-	-	-	-	-	-	-
6.	Losses (-)	-	-	-	5,0	7,0	-	1,0	23,0	1,7	-	-	-	0,1	0,1	-	1,0	-	-	-	-
7.	Food exports (-)	0,2	0,1	-	-	0,2	-	-	0,1	2,7	3,0	31,8	-	-	-	37,6	-	-	0,028	-	-
8.	Availability for consumption by the population (-)	76,4	225,6	226,0	363,4	76,0	37,1	79,9	107,0	15,8	83,3	242,7	376,0	4,3	14,5	25,0	161,4	25,0	9,2	12,0	13,6
9.	Other utilization (-)	0,3	0,3	0,3	0,3	0,3	0,3	0,3	0,3	-	-	-	0,9	-	-	-	-	1,0	1,0	1,0	1,0
	Consumption (4-9) (-)	156,9	226,0	226,3	428,7	163,5	37,4	81,2	134,4	20,2	86,3	274,5	376,9	4,4	14,6	62,6	162,4	26,0	10,2	13,0	14,6
10.	Stocks at the end of the period	65,4	271,1	638,7	624,4	101,2	137,9	293,3	403,8	2,0	6,0	248,0	192,2	0,8	0,8	53,7	3,9	13,5	37,2	67,8	81,9

	Basic foodstuffs (physical quantities)	Meat and meat products in carcass weight, thousand tons				Milk and dairy products, in milk, thousand tons				Eggs, million				Vegetable oil, thousand tons				Fish and fish products, tons			
		I q.	II q.	III q.	IV q.	I q.	II q.	III q.	IV q.	I q.	II q.	III q.	IV q.	I q.	II q.	III q.	IV q.	I q.	II q.	III q.	IV q.
1.	Stocks at the beginning of the period	0,6	0,5	0,6	1,5	0,6	0,6	0,6	0,8	1,0	0,5	0,5	0,3	5,0	1,0	1,0	2,4	6,7	0,7	0,5	3,7
2.	Food production in the country (+)	9,6	9,3	14,6	20,0	99,2	119,3	141,6	172,9	22,2	24,3	26,6	25,6	8,0	2,8	5,0	7,1	-	82	42,4	54,1
3.	Food imports (+)	3,3	2,0	2,3	4,8	0,3	2,4	-	9,7	17,8	11,4	15,3	33,9	8,2	12,7	12,6	22,5	81	14	82,8	91,2
	Availability (1-3) (+)	13,5	11,8	17,5	26,3	100,1	122,3	142,2	183,4	41,0	36,2	42,4	59,8	21,2	16,5	18,6	32,0	87,7	96,7	125,7	149,0
4.	Used for seed (-)	-	-	-	-	-	-	-	-	-	-	-	-	-	-	-	-	-	-	-	-
5.	Used as fodder (-)	-	-	-	-	-	-	-	-	-	-	-	-	-	-	-	-	-	-	-	-
6.	Losses (-)	-	-	-	-	-	-	-	-	-	-	-	-	-	-	-	-	-	-	-	-
7.	Food exports (-)	-	-	-	-	-	-	-	-	-	-	-	-	-	-	0,2	-	-	-	-	-
8.	Availability for consumption by the population (-)	13,0	11,2	16,0	23,0	99,0	121,4	141,0	182,1	40,4	35,6	42,0	58,9	16,7	15,5	16,0	21,6	87,0	96,2	122,0	144,1
9.	Other utilization (-)	-	-	-	-	0,5	0,3	0,4	0,4	0,1	0,1	0,1	0,1	0,1	3,5	-	-	-	-	-	-
	Consumption (4-9) (-)	13,0	11,2	16,0	23,0	99,5	121,7	141,4	182,5	40,5	35,7	42,1	58,6	20,2	15,5	16,2	21,6	87,0	96,2	122,0	144,1
10.	Stocks at the end of the period	0,5	0,6	1,5	3,3	0,6	0,6	0,8	0,9	0,5	0,5	0,3	1,2	1,0	1,0	2,4	10,4	0,7	0,5	3,7	4,9

FOOD BALANCE OF THE REPUBLIC OF TAJIKISTAN for 2006, by quarters

	Basic foodstuffs (physical quantities)	Bread and bread products in grain, thousand tons				Potatoes fresh, thousand tons				Vegetables and melons fresh, thousand tons				Fruits and berries fresh, thousand tons				Sugar and confectionery, in sugar, thousand tons			
		I q.	II q.	III q.	IV q.	I q.	II q.	III q.	IV q.	I q.	II q.	III q.	IV q.	I q.	II q.	III q.	IV q.	I q.	II q.	III q.	IV q.
1.	Stocks at the beginning of the period	620,4	517,0	558,2		403,8	327,2	243,5		192,2	52,5	3,3		2,5	-	0,6		81,9	90,8	89,0	
2.	Food production in the country (+)	-	220,3	523,6		-	85,4	228,9		0,5	121,1	382,4		-	24,7	154,3		-	1,2	-	
3.	Food imports (+)	229,2	14,4	82,5		-	7,3	0,5		0,1	0,8	0,1		5,0	1,1	0,8		22,9	18,5	10,1	
	Availability (1-3) (+)	849,6	751,7	1164,3		403,8	419,9	472,9		192,8	174,4	385,8		7,5	25,8	155,7		104,8	110,5	99,1	
4.	Used for seed (-)	81,0	-	-		-	111,7	-		-	-	-		-	-	-		-	-	-	
5.	Used as fodder (-)	-	-	-		-	-	-		-	-	-		-	-	-		-	-	-	
6.	Losses (-)	-	-	-		24,0	12,0	16,0		11,6	-	15,0		-	-	-		-	-	-	
7.	Food exports (-)	-	-	0,1		-	0,005	-		-	7,7	23,1		-	21,9	6,7		-	0,003	0,001	
8.	Availability for consumption by the population (-)	251,6	193,0	274,9		52,6	52,7	35,1		128,7	163,4	111,6		7,5	3,3	106,2		13,6	21,5	17,5	
9.	Other utilization (-)	-	0,5	0,3		-	-	-		-	-	-		7,5	-	3,0		0,4	-	20,0	
	Consumption (4-9) (-)	332,6	193,5	225,3		76,6	176,4	51,1		140,3	171,1	231,3		-	25,2	115,9		14,0	21,5	56,0	
10.	Stocks at the end of the period	517,0	558,2	939,0		327,2	243,5	421,8		52,5	3,3	154,5		-	0,6	39,8		90,8	89,0	43,1	

	Basic foodstuffs (physical quantities)	Meat and meat products in carcass weight, thousand tons				Milk and dairy products, in milk, thousand tons				Eggs, million				Vegetable oil, thousand tons				Fish and fish products, tons			
		I q.	II q.	III q.	IV q.	I q.	II q.	III q.	IV q.	I q.	II q.	III q.	IV q.	I q.	II q.	III q.	IV q.	I q.	II q.	III q.	IV q.
1.	Stocks at the beginning of the period	3,3	5,1	8,4		0,9	24,0	36,0		1,2	28,9	9,2		10,4	8,4	3,8		4,9	-	-	
2.	Food production in the country (+)	15,4	4,4	14,9		101,5	124,6	148,3		24,1	25,1	29,5		8,0	2,8	0,7		-	0,1	0,1	
3.	Food imports (+)	-	10,7	3,4		0,6	0,5	0,6		36,8	-	-		9,5	12,4	10,9		-	68	36,7	
	Availability (1-3) (+)	18,7	20,2	26,7		103,0	149,1	152,5		62,1	54,0	38,7		27,9	23,6	15,4		4,9	68,1	36,8	
4.	Used for seed (-)																				
5.	Used as fodder (-)																				
6.	Losses (-)																				
7.	Food exports (-)	-	0,085	-		-	0,016	-		-	-	-		-	0,003	0,01		-	-	-	
8.	Availability for consumption by the population (-)	13,6	11,7	9,8		78,0	112,1	125,8		33,2	44,8	38,0		19,5	19,8	19,2		4,9	68,1	36,8	
9.	Other utilization (-)			1,0		1,0	1,0	2,0													
	Consumption (4-9) (-)	13,6	11,8	10,8		79,0	113,1	127,8		33,2	44,8	38,0		19,5	19,8	19,2		4,9	68,1	36,8	
10.	Stocks at the end of the period	5,1	8,4	15,9		24,0	36,0	24,7		28,9	9,2	0,7		8,4	3,8	-3,8		-	-	-	

**APPENDIX 6. MONEY INCOMES, EXPENDITURES AND CONSUMPTION OF HOUSEHOLDS, IN THE REPUBLIC OF TAJIKISTAN,
BY DECILE POPULATION GROUPS (according to sampling household budget survey)**

	All households				of which:							
					Urban				Rural			
	the poorest 10% of population		the richest 10% of population		the poorest 10% of population		the richest 10% of population		the poorest 10% of population		the richest 10% of population	
I half of 2005	I half of 2006	I half of 2005	I half of 2006	I half of 2005	I half of 2006	I half of 2005	I half of 2006	I half of 2005	I half of 2006	I half of 2005	I half of 2006	
Money incomes , somoni	9,02	16,32	101,96	140,02	19,58	30,99	128,57	165,70	8,02	10,85	88,47	130,45
of which:												
labor incomes	5,69	12,34	51,10	56,91	16,42	25,79	91,94	113,23	5,07	7,32	23,78	35,95
social payments (pension, scholarships, benefits and other payments)	1,12	1,78	3,40	3,75	1,07	3,22	5,29	8,59	1,01	1,24	1,74	1,95
receipts from sales of agricultural products, feeds, livestock, etc.	1,30	0,70	15,23	24,72			2,25	1,36	1,31	0,96	26,00	33,41
Expenditures , somoni	16,26	26,48	94,89	128,55	20,69	35,08	119,94	164,97	16,66	23,27	81,18	115,00
of which:												
consumer expenditures	15,36	24,49	72,51	112,94	20,15	34,02	96,68	142,87	15,75	20,94	59,18	101,80
purchase of foods, including public catering	11,48	16,59	38,06	44,23	17,81	25,09	52,57	67,32	11,39	13,43	29,96	35,64
purchase of nonfoods for personal consumption	2,22	4,30	21,67	48,52	0,91	3,98	28,29	47,73	2,53	4,42	18,38	48,82
services	1,61	3,53	12,27	19,84	1,40	4,91	15,38	27,55	1,79	3,01	10,27	16,97
purchase of alcoholic beverages	0,05	0,07	0,51	0,35		0,03	0,56	0,26	0,05	0,09	0,57	0,38
Consumption of main foodstuffs, per 1 household member, kg												
Bread and bread products	11,95	10,58	14,69	15,58	7,79	7,76	11,36	12,19	12,30	11,61	17,49	16,81
Potatoes	2,13	1,88	3,66	2,92	1,86	1,58	3,75	3,63	2,25	1,99	3,68	2,66
Vegetables and melons	3,65	4,16	7,50	8,91	2,98	4,31	7,18	8,40	3,77	4,10	7,98	9,09
Fruits and berries, including dry	0,32	0,42	1,20	1,20	0,24	0,40	1,26	1,71	0,35	0,42	1,10	1,02
Meat and meat products	0,33	0,34	1,25	1,13	0,26	0,40	1,36	1,67	0,36	0,32	1,13	0,94
Milk and dairy products	3,14	2,75	7,00	6,90	1,05	1,91	6,00	7,65	3,29	3,07	7,84	6,62
Fish and fish products		0,00	0,01	0,01				0,04		0,00		0,01
Eggs (pieces)	2	2	4	3	1	2	5	5	2	2	4	3
Sugar and confectionery	0,65	0,57	1,10	1,19	0,49	0,58	1,32	1,51	0,68	0,56	1,05	1,07
Vegetable oil and other fats	0,72	0,76	1,25	1,30	0,66	0,87	1,33	1,34	0,74	0,71	1,28	1,28

**APPENDIX 7. DISTRIBUTION OF HOUSEHOLDS AND POPULATION IN THEM BY PER CAPITA INCOME
IN THE REPUBLIC OF TAJIKISTAN IN THE FIRST HALF OF 2005-2006** (according to sampling household budget surveys, in %)

	Distribution by money income in the first half of 2005			
	Total income		Disposable income	
	Number of households surveyed	Population in them	Number of households surveyed	Population in them
Total number	925	5394	925	5394
Including those with monthly per capita income (somoni):				
below 10,00	10,3	10,9	10,4	11,1
10,01-15,00	7,4	8,5	7,5	8,6
15,01-20,00	9,1	10,7	9,5	11,1
20,01-25,00	11,6	13,4	11,6	13,4
25,01-30,00	9,5	9,8	10,1	10,3
30,01-35,00	8,5	8,6	8,4	8,5
35,01-40,00	7,9	7,9	7,9	7,9
40,01-45,00	6,1	5,9	6,8	6,6
45,01-50,00	5,6	5,2	5,1	4,7
50,01-55,00	3,9	3,7	3,9	3,5
55,01-60,00	3,4	2,9	3,6	2,9
60,01-65,00	2,8	2,4	2,7	2,2
65,01-70,00	2,1	1,6	1,6	1,3
70,01-75,00	1,6	1,2	1,6	1,1
75,01-80,00	1,6	1,2	1,4	1,0
80,01-85,00	0,9	0,7	0,9	0,7
85,01-90,00	1,1	0,9	1,0	0,8
90,01-95,00	0,5	0,4	0,5	0,4
95,01 and more	6,1	4,1	5,5	3,9

	Distribution by money income in the first half of 2006			
	Total income		Disposable income	
	Number of households surveyed	Population in them	Number of households surveyed	Population in them
Total number	925	5434	925	5434
Including those with monthly per capita income (somoni):				
below 15,00	11,9	13,3	12,0	13,6
15,01-20,00	6,5	7,3	6,6	7,5
20,01-25,00	6,1	7,2	6,3	7,3
25,01-30,00	8,2	10,0	8,3	10,1
30,01-35,00	6,8	7,5	6,8	7,5
35,01-40,00	7,2	7,5	7,6	8,1
40,01-45,00	6,8	7,3	7,3	7,7
45,01-50,00	6,6	6,5	6,4	6,3
50,01-55,00	4,9	4,8	5,2	4,7
55,01-60,00	4,6	4,4	4,5	4,3
60,01-65,00	3,8	3,4	3,8	3,4
65,01-70,00	3,0	2,7	3,1	2,7
70,01-75,00	3,0	2,5	2,6	2,3
75,01-80,00	2,3	2,1	2,3	2,0
80,01-85,00	2,4	2,0	2,0	1,6
85,01-90,00	1,6	1,3	1,7	1,3
90,01-95,00	1,0	0,7	0,9	0,7
95,01-100,00	1,5	1,3	1,5	1,2
100,01 and more	11,8	8,2	11,1	7,7

APPENDIX 8. STRUCTURE OF AVERAGE MONTHLY EXPENDITURES OF POPULATION IN THE REPUBLIC OF TAJIKISTAN
(according to sampling household budget survey)

	I half of 2005						I half of 2006					
	Per 1 household member, somoni / month	of which:		Per 1 household member, in %	of which:		Per 1 household member, somoni / month	of which:		Per 1 household member, in %	of which:	
		Urban area	Rural area		Urban area	Rural area		Urban area	Rural area		Urban area	Rural area
Money expenditures	37,73	49,39	33,32	100,00	100,00	100,00	50,89	70,67	43,68	100,00	100,00	100,00
of which:												
Consumer expenditures	32,98	44,32	28,70	87,4	89,7	86,1	46,38	64,69	39,71	91,1	91,5	90,9
including:												
on foods	21,97	30,32	18,81	66,6	68,4	65,5	27,34	38,56	23,25	58,9	59,6	58,5
on nonfoods	6,83	8,36	6,25	20,7	18,9	21,8	12,13	15,54	10,89	26,2	24,0	27,4
including:												
clothes, footwear, fabrics	2,87	4,20	2,38	42,0	50,2	38,1	3,90	6,24	3,04	32,2	40,2	27,9
furniture and cultural and household appliances	0,77	0,91	0,71	11,3	10,9	11,4	1,73	3,79	0,98	14,3	24,4	9,0
medicines	0,54	0,60	0,52	7,9	7,2	8,3	0,93	1,30	0,86	7,7	8,4	7,9
building materials	0,84	0,27	1,06	12,3	3,2	17,0	1,59	0,76	1,89	13,1	4,9	17,4
fuel	0,15	0,07	0,17	2,2	0,8	2,7	0,24	0,12	0,28	2,0	0,8	2,6
tobacco goods, makhorka	0,18	0,17	0,18	2,6	2,0	2,9	0,22	0,22	0,22	1,8	1,4	2,0
alcoholic beverages	0,11	0,07	0,13	0,3	0,2	0,5	0,12	0,06	0,15	0,3	0,1	0,4
services	4,07	5,57	3,51	12,3	12,6	12,2	6,79	10,53	5,42	14,6	16,3	13,6
of which:												

	I half of 2005						I half of 2006					
	Per 1 house-hold member, somoni / month	of which:		Per 1 house-hold member, in %	of which:		Per 1 house-hold member, somoni / month	of which:		Per 1 house-hold member, in %	of which:	
		Urban area	Rural area		Urban area	Rural area		Urban area	Rural area		Urban area	Rural area
housing and communal services	1,27	1,84	1,05	31,2	33,0	29,9	1,71	3,15	1,19	25,2	29,9	22,0
including payments for :												
dwelling space	0,06	0,07	0,05	4,7	3,8	4,8	0,12	0,25	0,07	7,0	7,9	5,9
communal services	1,21	1,77	1,00	95,3	96,2	95,2	1,59	2,90	1,12	93,0	92,1	94,1
o/w electric energy	0,55	0,59	0,54	45,5	33,3	54,0	0,74	1,16	0,59	46,5	40,0	52,7
personal services	0,27	0,34	0,26	6,6	6,1	7,4	0,61	0,68	0,59	9,0	6,5	10,9
o/w repair and individual manufacture of clothes and footwear	0,05	0,08	0,04	18,5	23,5	15,4	0,01	0,17	0,05	1,3	25,0	8,5
cultural and educational services	0,06	0,01	0,08	1,5	0,2	2,3	0,10	0,09	0,10	1,5	0,9	1,8
payments for education	0,23	0,60	0,09	5,7	10,8	2,6	0,31	0,74	0,15	4,6	7,0	2,8
payments for medical services	0,12	0,29	0,06	2,9	5,2	1,7	0,33	0,75	0,18	4,9	7,1	3,3
payments for treatment in sanatoria and health resorts, including rest							0,01	0,03	0,01	0,1	0,3	0,2
transport services	1,96	2,20	1,88	48,2	39,5	53,6	3,31	4,02	3,06	48,7	38,2	56,5
communication services	0,06	0,13	0,04	1,5	2,3	1,1	0,25	0,79	0,05	3,7	7,5	0,9
legal services	0,04	0,03	0,04	1,0	0,5	1,1	0,06	0,02	0,07	0,9	0,2	1,3
Taxes, due, and other payments	0,90	2,66	0,23	2,4	5,4	0,7	1,06	3,20	0,28	2,1	4,5	0,6
Other expenditures	3,85	2,41	4,39	10,2	4,9	13,2	3,45	2,78	3,69	6,8	3,9	8,4

Continued

DISTRIBUTION OF HOUSEHOLDS AND POPULATION IN THEM BY PER CAPITA CONSUMER EXPENDITURES in the first half of 2005
(according to sampling household budget survey), in %

	Number of households surveyed	Population in them	Households consisting of:					Households having children below 16	of which households having			
			1 person	2 persons	3 person	4 persons	5 and more persons		1 child	2 children	3 children	4 and more children
Total number	925	5460	23	45	67	134	656	783	165	221	200	197

of which those with monthly per capita expenditures (somon) :

below 10,00	2,1	2,7			1,5		2,8	2,4	1,8	1,4	3,0	3,6
10,01-15,00	6,6	8,3			1,5	3,0	8,6	7,8	4,2	7,7	6,5	12,2
15,01-20,00	8,5	10,6		2,2		3,7	11,2	9,6	6,7	6,8	8,5	16,2
20,01-25,00	17,2	19,9	13,0	2,2	10,5	9,7	20,8	18,5	7,3	14,5	22,0	28,9
25,01-30,00	13,6	13,6	17,4	2,2	14,9	11,2	14,5	14,3	8,5	17,2	16,5	13,7
30,01-35,00	12,5	12,7	4,4	8,9	10,5	11,2	13,6	12,4	15,2	10,0	13,0	12,2
35,01-40,00	10,3	9,8	4,4	13,3	11,9	10,5	10,1	10,9	13,9	12,2	12,0	5,6
40,01-45,00	5,7	4,5		20,0	7,5	11,2	3,5	5,5	11,5	4,1	5,0	2,6
45,01-50,00	5,8	4,9	8,7	8,9	7,5	8,2	4,7	5,7	8,5	9,0	4,5	1,0
50,01-55,00	3,2	2,7	8,7	8,9	5,9	7,5	2,1	2,6	3,7	2,7	2,5	1,5
55,01-60,00	3,3	2,7	4,4	6,7	1,5	4,5	2,8	2,9	7,3	2,7	1,5	1,0
60,01-65,00	2,1	1,7		6,7	4,5	2,2	1,5	1,7	3,0	1,8	1,5	0,5
65,01-70,00	1,9	1,3	8,7	6,7	3,0	3,0	1,1	1,1	1,2	2,7	0,5	
70,01-75,00	1,7	1,2	4,3	2,2	5,9	3,0	0,6	0,8	1,8	0,9	0,5	
75,01-80,00	1,4	1,2		2,2	3,0	2,2	1,1	1,1	1,2	0,9	1,5	1,0
80,01-85,00	0,8	0,5			1,5	2,2	0,3	0,6		1,8	0,5	
85,01-90,00	0,7	0,3	13,0			1,5	0,2	0,4	0,6	0,9		
90,01-95,00	0,3	0,2			3,0		0,2	0,3		0,4	0,5	
95,01 and more	2,3	1,2	13,0	8,9	5,9	5,2	0,3	1,4	3,6	2,3		

Continued

DISTRIBUTION OF HOUSEHOLDS AND POPULATION IN THEM BY PER CAPITA CONSUMER EXPENDITURES in the first half of 2006
(according to sampling household budget survey), in %

	Number of households surveyed	Population in them	Households consisting of:					Households having children below 16	of which households having			
			1 person	2 persons	3 person	4 persons	5 and more persons		1 child	2 children	3 children	4 and more children
Total number	925	5409	25	43	70	135	652	771	169	223	187	192

of which those with monthly per capita expenditures (somoni) :

below 10,00	3,24	4,31					4,60	3,89	1,78	2,24	3,74	7,81
10,01-15,00	4,76	5,43					4,44	5,83	5,71	5,92	4,93	8,34
15,01-20,00	8,43	10,37	8,00		5,71	1,48	10,74	9,47	7,69	4,48	9,09	17,19
20,01-25,00	11,68	14,67	12,00	4,65	4,29	2,96	14,72	12,84	7,69	9,42	14,97	19,27
25,01-30,00	9,08	10,64	4,00	6,98	1,43	5,93	10,89	10,12	6,51	7,17	11,23	15,63
30,01-35,00	10,38	10,81	4,00	6,98	5,71	5,19	12,42	11,54	8,88	9,87	14,44	13,02
35,01-40,00	8,65	8,65		2,32	1,43	8,89	10,12	9,47	13,61	9,87	9,63	5,21
40,01-45,00	6,27	6,08	4,00		7,14	8,15	6,29	6,23	7,10	8,07	6,95	2,60
45,01-50,00	7,03	6,28	4,00	9,30	5,71	9,63	6,60	6,23	6,51	7,17	8,02	3,13
50,01-55,00	3,89	3,57		2,32	4,29	4,44	3,98	4,28	5,33	5,83	4,28	1,56
55,01-60,00	3,78	3,19		6,98	5,71	6,67	2,91	3,24	5,33	3,59	2,14	2,08
60,01-65,00	2,81	2,16	4,00	11,63	2,86	5,19	1,69	2,08	1,77	3,14	2,67	0,52
65,01-70,00	2,16	1,82	16,00				1,48	2,15	1,69	1,77	1,35	3,21
70,01-75,00	2,49	1,71	8,00	4,65	7,14	3,70	1,38	2,08	1,77	4,48	1,61	
75,01-80,00	1,84	1,11	4,00	9,30	4,29	5,18	0,31	1,03	1,77	2,24		
80,01-85,00	1,95	1,62			2,86	5,93	1,23	1,69	3,55	2,24	0,54	0,52
85,01-90,00	1,19	0,66	8,00	2,33	5,71		0,61	0,90	2,37	0,90		0,52
90,01-95,00	1,51	1,17	4,00	6,98	1,43	0,74	1,23	0,90	0,59	0,90	1,60	0,52
95,01 and more	8,86	5,75	20,00	25,58	34,29	20,00	2,30	6,61	10,06	12,11	2,14	1,56

APPENDIX 9. PER CAPITA CONSUMPTION OF FOOD IN THE REPUBLIC OF TAJIKISTAN
(according to sampling household budget surveys)

(per month, kg)

	<i>I half of 2005</i>			<i>I half of 2006</i>		
	Total	of which:		Total	of which:	
		Urban area	Rural area		Urban area	Rural area
Bread products	12,63	10,45	13,43	12,27	9,95	13,12
Potatoes	2,67	2,54	2,72	2,44	2,20	2,53
Vegetables and melons	5,42	5,61	5,34	6,88	6,80	6,90
Fruits and berries, including dry	1,60	0,82	1,89	1,97	1,24	2,24
Sugar and confectionary	0,83	0,93	0,79	0,86	1,00	0,81
Meat and meat products	0,52	0,66	0,47	0,57	0,79	0,49
Fish products	-	-	-	0,00	0,01	-
Milk and dairy products	4,76	2,86	5,47	5,37	3,54	6,04
Eggs (pieces)	3	2	3	2,39	2,79	2,24
Vegetable oil and margarine	0,97	1,01	0,95	0,98	1,01	0,97

**FOOD SECURITY AND POVERTY
INFORMATION BULLETIN
OF THE REPUBLIC OF TAJIKISTAN**

/ Edited by Shabozov M.Sh. - Chairman
of the State Committee on Statistics
of the Republic of Tajikistan
734025 Tajikistan, Dushanbe, Bokhtar Street, 17 /

Editorial board:

Shabozov M.Sh. - Chairman of Editorial Board

Mukhammadiyeva B.Z., Asoev A.A., Ashurov I.S., Baimatov K.F., Gukasova T.P.,
Abdulloev M.A., Jdanova L.V., Ziaeva M.A., Kislitsina E.A., Turaev B.T.

Responsible for:

- sections of the Bulletin

Vital and Employment Statistics	Kislitsina E.A.	27-80-88
Social Statistics	Budnikova E.V.	27-94-88
Prices, Household Budgets and Poverty Statistics	Turaev B.T.	27-56-28
Finances	Pulatova N.T.	27-98-71
Gross Domestic Product	Ziaeva M.A.	27-98-71
Trade, External Activity	Jdanova L.V.	23-32-48
Agriculture	Abdulloev M.A.	27-81-14
Nature and Environment Statistics	Norov K.	27-82-66

-preparation of main document, systematization of parts, and design:

Economic Analysis and International
Relations Department

Gukasova T.P.

Tel. 21-23-87

e-mail: stat@tojikiston.com

-publication:

Chief of Central Computer Center
of the State Committee on Statistics
of the Republic of Tajikistan

Baimatov K.F.

Tel: 27-96-09