

**STATE COMMITTEE ON STATISTICS
REPUBLIC OF TAJIKISTAN**

INFORMATION BULLETIN

**FOOD SECURITY AND POVERTY
IF THE REPUBLIC OF TAJIKISTAN**

№ 2 / 2006

Dushanbe - 2006

Statistical service is one of the effective methods for establishing the order and evaluation of prospects of economic agents activity. Under the conditions of market economy, it is not possible to insure the sustainable development without proper accounting, work analysis and resource planning.

In this respect, and in accordance with legislation, all enterprises, organizations, institutions, and all production and non-production subjects, independently of their form of ownership, have to submit all required complete and accurate reports in due time to the statistical bodies. Thereby, statistical recording is to be indispensable, complete and unexceptional on the whole territory of the republic.

Relevant state authorities have to take required actions to bring accounting system into the line with international standards.

E.SH.RAHMONOV

Introduction

In accordance with European Commission Matrix on Policy Reform of Memorandum of Understanding on Food Security Program in the Republic of Tajikistan the decision about preparation and publishing of Quarterly Food Security Bulletin was made to ensure system of reliable operative information and analysis of current food security situation in the Republic of Tajikistan.

“Food security presumes that all people have access, at all time, to sufficient food required for an active and healthy life. Food security also means physical availability of food in sufficient quantities, accessibility of those foodstuffs for households (through the market and other sources, that suppose sufficient purchasing power), as well as consumption of food in quantities required for satisfying of nutritional needs”.

The purpose of the Bulletin is to bring together and systematize available information on food security in Tajikistan; i.e. the availability of food in the republic and outlook for food production, indicators on access to food, food use and utilization. The Bulletin also contains analysis of current food security situation in the Republic.

The base indicators for Food Security Bulletin are production of food, food availability and accessibility, areas under crops, agricultural production and productivity, main climatic conditions, health indicators, water supply, prices, and quantitative indicators reflecting situation on food market.

The Appendices to the Bulletin show indicators of Poverty Reduction Strategy Paper, information on nutritional status of various socio-economic groups of the population, as well as estimated data on food balance.

The presented Quarterly Food Security Information Bulletin of Tajikistan was prepared by State Committee on Statistics with participation of key Ministries and Departments (Ministry of Finance, Ministry of Health Care, Ministry of Labor and Social Protection of Population, Ministry of Education, Ministry of Communication, Ministry of Transport, Social Protection Fund, Hydrometeorological Agency under the Committee for Nature and Forestry Protection of the Republic of Tajikistan, etc.). The publication is prepared with technical and financial support of European Commission in the Republic of Tajikistan.

The publication is intended both for specialists and all interested persons.

All recommendations, suggestions and remarks related to the content of the Bulletin should be addressed to the State Committee on Statistics of the Republic of Tajikistan at the following address:

17 Bokhtar Street Dushanbe
734025 Tajikistan
Tel. (992 372) 212387, Fax (992 372) 214375
email: stat@tojikiston.com
<http://www.stat.tj>

CONTENTS

Introduction	123
Overview	127
CHAPTER I. SOCIO-ECONOMIC INDICATORS	129
1.1. Gross Domestic Product.....	129
1.2. Price and Tariff Indices	130
1.3. Foreign trade	131
1.4. Labor market	131
CHAPTER II. AVAILABILITY OF FOOD	133
2.1. Growth in agricultural production.....	133
2.1.1 Outlook of agricultural production	133
2.1.2. Spring crops	135
2.1.3. Livestock production	136
2.2. Producer prices.....	138
2.3. Trade in basic foodstuffs.....	140
2.4. Availability of food per capita	141
CHAPTER III. ACCESS TO FOOD.....	142
3.1. Retail prices.....	142
3.2. Incomes and Expenditures	144
3.2.1. Incomes.....	144
3.2.2. Expenditures	145
3.3. Poverty in the Republic of Tajikistan	146
3.4. Food insecurity: households with spend more than 70% of expenditures on food.....	146
CHAPTER IV. USE AND UTILIZATION	147
4.1. Consumption of food products by the population.....	147
4.2. Food security indicators not related to income	149
4.2.1. Population morbidity.....	149
METHODOLOGY	151
Glossary	153
List of abbreviations	153

Appendix 1. Review of hydro-meteorological conditions of the Republic of Tajikistan	154
Meteorological conditions	154
Hydrological conditions.....	155
Review of avalanches and mudflows.....	156
Appendix 2 PRSP Indicators in the Republic of Tajikistan.	157
Appendix 3. Changes in average wholesale prices in Tajikistan	160
Appendix 4. Changes in average consumer prices in Tajikistan.....	161
Appendix 5. Food balance	163
Appendix 6. Money incomes, expenditures and consumption of households, by deciles population groups in the Republic of Tajikistan	169
Appendix 7. Distribution of households and population in them by per capita income in the Republic of Tajikistan in the first quarters of 2005-2006	170
Appendix 8. Structure of average monthly expenditures of population in the Republic of Tajikistan	171
Appendix 9. Per capita consumption of food in the republic of Tajikistan	175

OVERVIEW

According to preliminary estimates, growth of real Gross Domestic Product (GDP) as compared to the similar period of the previous year was positive and amounted to 7.1% in January - June 2006.

Monthly inflation rate in consumer's sector made up 1.1% (against 0.68% in the corresponding period of the previous year).

Share of food products in the total value of exports of Tajikistan accounted for 2.6% and 1.7% in the first half of 2005 and 2006, respectively. The share of food products in total volume of imports was well higher and accounted for 12.3% and 10.6%, respectively.

Major plant products in exports were fruits (6162 thsd.USD) and vegetables (1536 thsd.USD), while in imports it were wheat (11218 thsd.USD) and flour (24384 thsd.USD).

Imports of food products in January-June 2006 increased by 15% as compared to the similar period of the previous year. Imports of milk and dairy products increased by 67%, spaghetti, noodles and other - by 39%. Imports of wheat decreased by 15% amounting to 123.2 thsd.tons (against 145.0 thsd.tons in the similar period of 2005), and imports of flour increased by 19% amounting to 189.3 thsd.tons (against 159.1 thsd.tons in the first half of 2005).

As of 1 July 2006, production of grain increased by 26.6%, potatoes - by 15.7%, vegetables - 24.2%, melons - in 2 times, fruits - 69.6%, and grapes 59.6% as compared to the similar date of the previous year.

In the first half of 2006, farms of all categories produced 39.5 thsd. tons of meat or 104.4% as compared to the similar period of the previous year, 226.1 thsd.tons of milk (103.4%), and 49.2 mln.eggs (106.0%).

In January - June 2006, 13.6 thsd.persons were on leave on initiative of administration, of them 11.8 thsd.persons (85.3%) were on leave without pay. 1.1 thsd.persons were working during incomplete working week or working day. Unemployment rate, including hidden unemployment, amounted to 3.1% of economically active population.

Monthly average nominal wages and salaries of employees in June 2006 was 131.05 somoni, increasing by 15.6% as compared to May 2006, and by 43.9% as compared to June 2005.

In June 2006, the lowest wages and salaries in real sector were observed in agriculture and forestry, amounting to 42.37 somoni and 47.22 somoni, respectively.

The cost of *consumer's basket*, at actual consumption (according to household survey 2004) amounted to 44.76 somoni per one household member in prices of end of June

2006, while the cost of food basket according to rational nutritional standard would amount to 93.91 somoni.

In total structure of household's expenditures for food, bread and bread products occupies the first place (39.4%). In the first quarter of 2006, in all regions of Tajikistan consumption of bread and bread products exceeded approved medical norm by 17%.

During 2006 retail prices of most basic foodstuffs increased significantly as compared to December 2005, except of flour, cotton oil and eggs.

As compared to the similar period of the previous year, number of cases of acute enteric infections increased by 13.3% (7.6% for children aged 0-14), of which cases of bacterial dysentery increased by 29% (16.3% for children aged 0-14), mainly due to use of poor potable water, fruits and vegetables. At the same time, number of registered cases of typhoid fever decreased by 8.3%.

CHAPTER 1. SOCIO-ECONOMIC INDICATORS

The mentioned below socio-economic indicators depict overall economic situation in the country, required for analysis of food security situation.

1.1 GROSS DOMESTIC PRODUCT

According to preliminary estimates, growth of real Gross Domestic Product (GDP) as compared to the similar period of the previous year was positive and amounted to 7.1% in January - June 2006. The biggest impact was due to increase of production in agriculture, industry and trade.

Table 1: Main socio-economic indicators

	<i>2004</i>	<i>2005</i>	<i>1 half of 2005</i>	<i>1 half of 2006</i>
Population (million)	6,8	6,9	6,839	6,985
Nominal GDP (mln.somoni)	6157,5	7201,1	2796,2	3524,5
of which (in %):				
agriculture	22,0	21,4	13,2	13,7
industry	20,5	18,5	21,5	20,7
services	41,8	43,8	47,7	48,8
GDP per capita (somoni)	910,0	1051,2	x	x
GDP growth , in % to the corresponding period of the previous year	10,6	6,7	8,1	7,1
State budget deficit / surplus (as percentage of GDP)	-0,2	-1,5	0,6	0,8
Consumer Price Indices (CPI), in % to the corresponding period of the previous year	106,8	107,8	107,1	109,7
Price Indices for foodstuffs	105,0	108,9	108,3	110,9
Price indices for services	117,3	109,8	106,0	117,5
Exchange rate of somoni (per 1 US Dollar)	2,9711	3,1175	3,0563	3,2179
Officially registered unemployment rate	2,0	2,0	2,0	2,4
Number of registered unemployed, thsd.persons	38,8	43,6	40,5	48,2
in % to the corresponding period of the previous year	90,4	112,4	95,3	119,0

	2004	2005	1 half of 2005	1 half of 2006
Monthly average wages and salaries (somon)	61,81	83,58	81,57	107,70
in % to the corresponding period of the previous year	138,6	135,2	153,2	132,0
Trade balance (mln.USD)	-276,4	-421,1	-172,98	-133,1
Share of food in total imports, %	9,6	11,7	27,1	23,8
Share of food in total exports, %	3,2	3,3	11,0	9,7

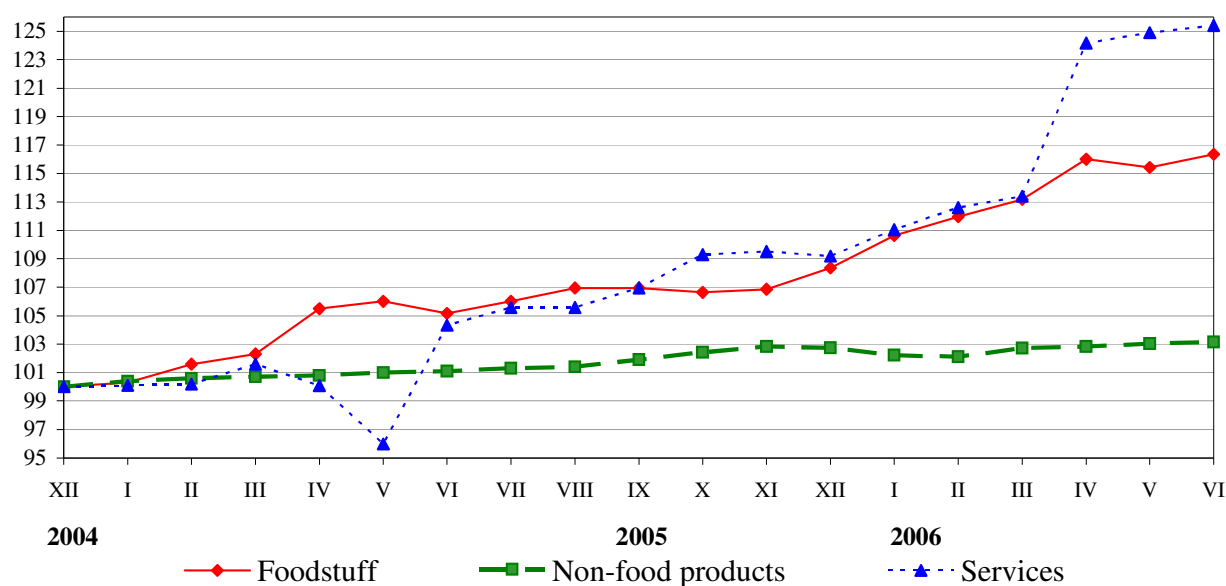
1) preliminary data

Source: State Committee on Statistics

1.2. Price and Tariff Indices

In January-June 2006, consumer price index constituted 106.6%, of which for foodstuff - 107.3%, non-food products - 100.4%, and paid services to population - 114.9%. Monthly inflation rate in consumer's sector made up 1.1% (against 0.68% in the corresponding period of the previous year).

Graph 1: Consumer price indices for foodstuff, non-food products and paid services (at the end of each month, in % to December 2003)



During the first half of 2006, the increase of prices of foods outpaced those of non-foods. More detailed information on prices of food is available in the section 3 “Access to food”.

1.3 Foreign trade

In January-June 2006, foreign trade turnover of the Republic of Tajikistan including electric power and natural gas was valued at 1476.1 million USD, which is by 438.6 mln.USD (or 42.3%) higher than in January-June 2005. The gap between exports and imports determined the deficit of trade balance valued at - (minus) 133.1 million USD.

In January-June 2006, volume of exports amounted to 671.5 mln.USD, which is by 55.4% or 239.3 mln.USD higher than in the similar period of 2005. Volume of imports amounted to 804.6 mln.USD, which is by 32.9% or 199.4 mln.USD higher than in January-June of 2005.

Major plant products in exports were fruits (6162 thsd.USD) and vegetables (1536 thsd.USD), while in imports it were wheat (11218 thsd.USD) and flour (24384 thsd.USD).

1.4 Labor market

According to preliminary estimates, the number of economically active population (employed and officially registered unemployed) in June 2006 was 2052.2 thsd.persons, of them 2003.5 thsd.persons (97.6%) were occupied in the economy, and 48.7 thsd.persons (2.4%) had official status of unemployed.

As of the end of June 2006, 77.1 thsd.persons were registered in employment offices as looking for a job, which is by 9.2% less than at the corresponding date of the previous year, and by 3.1% less than in May 2006.

From the beginning of 2006, 35.5 thsd.persons applied to employment offices for a job (which is by 6.4% higher than in 2005). Of them, 45.1% (16.0 thsd.persons) were young people aged 15-29. All applied persons were unemployed. 44.9% (15.9 thsd.persons) of them are persons who were looking for a job for the first time, and 43.1% (15.3 thsd.persons) did not have a profession / qualification.

As of the end of June 2006, the number of vacancies, offered by enterprises through employment offices decreased by 4.1% as compared to the similar period of 2005, and made up 18.3 thsd places. At the same time, the number of vacancies for blue-collar job decreased by 18.7% and made up 7.7 thsd. As compared to the May 2006, number of offered vacancies increased by 9.1%.

In January-June 2006, number of professional trainings through employment offices for registered unemployed and their engaging in public paid works increased as compared to the corresponding period of 2005. In January-June 2006, 5.1 thsd. registered unemployed were offered professional training by employment offices (which is by 29.5% higher than at the corresponding period of the previous year). 2.6 thsd.persons have completed the

training courses.

Besides, 13.9 thsd.persons were sent to public paid works (of which 7.7 thsd. persons were registered as unemployed), which is by 18.9% higher than at the corresponding period of 2005.

Employment offices provide unemployed population with various career guidance services. As of the end of June 2006, 4.4 thsd. unemployed were provided with such services.

Hidden unemployment means underemployment, when a part of workers are on forced leave or work during incomplete working week or working day due to downtime. In January - June 2006, 13.6 thsd.persons were on leave on initiative of administration, of them 11.8 thsd.persons (85.3%) were on leave without pay. 1.1 thsd.persons were working during incomplete working week or working day. Unemployment rate, including hidden unemployment, amounted to 3.1% of economically active population.

Monthly average nominal wages and salaries of employees in June 2006 was 131.05 somoni, increasing by 15.6% as compared to May 2006, and by 43.9% as compared to June 2005.

Real increase of wages and salaries (deflated by the CPI) in June 2006 made up 14.9% as compared to May 2006, and 29.0% as compared to June 2005.

In June 2006, the lowest wages and salaries in real sector were observed in agriculture and forestry, amounting to 42.37 somoni and 47.22 somoni, respectively. The highest wages and salaries were in construction (372.49 somoni), communication (288.60 somoni), industry (234.33 somoni), and transport (206.60 somoni). Average monthly salary in real sector in June 2006 was 104.11 somoni, increasing by 28.3% as compared to June 2005.

In nonmaterial sphere, the highest salary remains in the area of finance and crediting (485.96 somoni in June 2006). Average monthly salary in nonmaterial sphere in June 2006 was 158.92 somoni, increasing by 58.0% as compared to June 2005.

As of the end of June 2006, total arrears in salary payments for the republic made up 26936.4 thsd.somoni, of which arrears for June 2006 accounted for 15.4% (4152.0 thsd.somoni).

CHAPTER II. AVAILABILITY OF FOOD

Availability refers to the physical presence of food as a result of domestic production or market operations. On country level availability of food is determined by combination of food stocks, commercial imports, food aid and domestic production. The availability is also determined by the following elements: weather conditions, crop yield, livestock and productivity, producer prices for food, food prices in neighboring countries, as well as national policy defining production, trade, distribution and pricing.

2.1. Growth in agricultural production

The value of gross agricultural output in January - June 2006 in all categories of farms increased by 13.4% as compared to the corresponding period of the previous year and amounted to 638915 thsd.somoni (at current prices), of which: plant products - 312861 thsd.somoni (increased by 24.1%), and animal products - 326054 thsd.somoni (increased by 4.7%).

The value of gross agricultural output in all categories of farms in Khatlon Oblast amounted to 322420 thsd.somoni (increased by 14.3%), Soghd Oblast - 175009 thsd.somoni (by 11.1%), GBAO - 13497 thsd.somoni (by 5.1%), and regions of the republican subordination - 3127989 thsd.somoni (by 15.2%).

2.1.1. Outlook for agricultural production

Climate influence on crop production

In **April**, the average monthly air temperature was above the norm by 4-8 degrees. The most part of the month was characterized by higher temperature conditions. The warmest weather was observed during the last five days of the month. Monthly amount of precipitations was mainly below the mean annual values. During first and third decades of April, increase of water content in Yahsu, Kyzylsu rivers, and rivers of southern slope of Gissar range was observed, while the second decade was characterized by decrease of water content. During the month, the level of Sarez lake decreased, while content of Nurek reservoir increased. Water level in Kairakum reservoir decreased by 0.020 mln.m³. Monthly average water discharge in Vakhsh river was below the last year values by 83%, and below the norm by 88%.

May was characterized by relatively dry and warm weather. The average monthly air temperature was above normal by 2-5 degrees and amounted to 21-27 degrees in valleys. Decrease of day-time air temperature was observed in the second half of the month, when the maximum temperature in valleys was 30-35 degrees. During the first and second decades of May, increase of water content in the rivers of the republic was observed. In

the third decade, the water level started to decrease gradually, due to decrease in air temperature.

Monthly average water discharge of the most rivers of the republic exceeded the norm and last years values. During the month, the level of Sarez lake increased. During the month content of Nurek reservoir increased, while Water level in Kairakum reservoir decreased. Monthly average water discharge in Vakhsh river was above the last year values by 113%, and above the norm by 112%.

In **June**, the average monthly air temperature on the most part of the republic was above normal by 0.5-2 degrees. During the first half of the month, the maximum air temperature in valleys did not exceed 30-35 degrees, but the coolest weather was registered on 11 June, when the average daily temperature fell to 27-30 degrees and was below the norm by 2-3 degrees. Precipitations were very seldom. Monthly amount of precipitations was below the mean annual values (60-80%).

In June, gradual decrease of water content was registered in Yahsu and Kyzylsu (Yujnaya) rivers, while water content in other rivers of the republic was subject to fluctuations. Monthly average water discharge of the most rivers of the republic was within and below last years values.

During the month, the level of Sarez lake increased by 12 sm and amounted to 2111 sm. During the month content of Nurek reservoir increased, while water level in Kairakum reservoir decreased. Monthly average water discharge in Vakhsh river was below the last year values by 68%, and below the norm by 81%.

Table 2: Water reservoirs as of 30 June 2006

<i>Water reservoirs</i>	<i>Changes during the month</i>	<i>Volume of water in 2005</i>		<i>Volume of water in 2006</i>	
	<i>mln. cubic meters</i>	<i>mln. cubic meters</i>	<i>in % to total capacity</i>	<i>mln. cubic meters</i>	<i>in % to total capacity</i>
Kayrakkum	- 0,659	3320	79,8	2558	61,5
Nurek	+ 0,444	8421	80,2	7118	67,8

The weather reports prepared by the Hydrometeorological Agency of the Republic of Tajikistan for the second quarter of 2006 are attached at Appendix 1.

Table 3: Sown area and gross harvest

	2004	2005	1 quarter		1 half	
			2005	2006	2005	2006
Sown area (thsd.ha)	905,6	901,1	254,3	306,1	900,4	899,3
Winter crops	163,7	181,2	115,3	147,5	181,3	214,1
Cereal crops	163,7	181,2	115,3	147,5	181,2	214,1
Spring crops	741,9	719,9	139,0	158,6	719,1	685,2
Cereal crops	240,1	214,3	94,5	89,9	214,3	187,8
wheat	170,7	150,1	81,1	69,8	150,3	122,2
barley	37,5	31,3	12,1	16,9	31,1	30,4
Industrial crops	333,1	325,4	24,4	30,5	325,7	294,0
Potatoes	28,6	27,5	1,1	1,8	27,5	27,9
Vegetables	32,0	33,4	3,8	6,1	33,5	35,8
Melons	10,6	9,2	0,6	1,2	9,2	9,1
Gross harvest, thsd.tons						
Vegetables	681,5	718,5	0,4	0,5	84,5	104,9
Potatoes	527,2	555,1	-	-	73,9	85,5
Cereals	891,6	934,9	-	-	174,0	220,3
Melons	150,4	170,2	-	-	5,5	16,6
Fruits	144,4	148,3	-	-	14,5	24,5
Grapes	93,2	90,6	-	-	0,1	0,2

In the first half of 2006, the share of areas under cereals and leguminous cultures accounted for 44,7% of all sown areas, under technical cultures - 32.7%, of which under cotton - 29.3%, under feed crops - 14.5%, under potatoes, vegetables and melons - 8.1%.

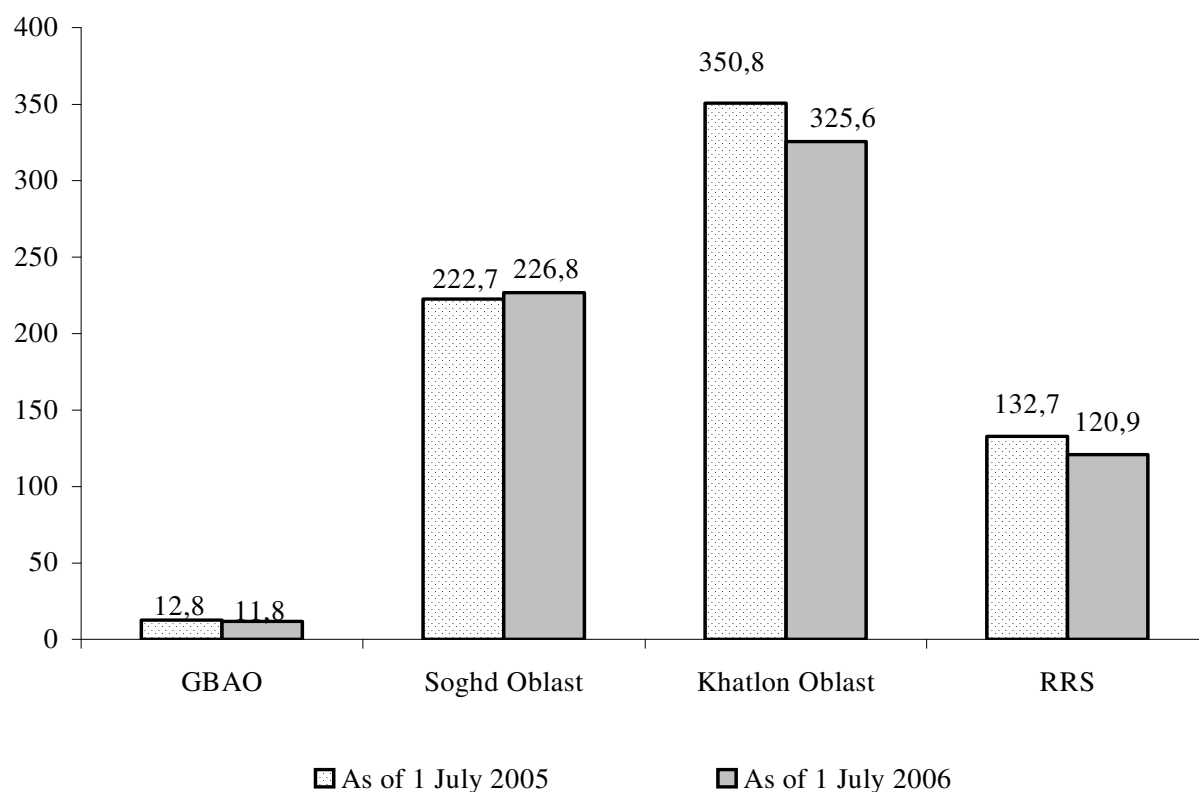
As of 1 July 2006, production of grain increased by 26.6%, potatoes - by 15.7%, vegetables - 24.2%, melons - in 2 times, fruits - 69.6%, and grapes 59.6% as compared to the similar date of the previous year.

2.1.2. Spring crops

As of 1 July of the current year, spring crops were sown on an area of 685.2 thousand ha, or 95.2% of the areas under spring crops at the corresponding time last year. Details on spring crops sowing by Oblasts are presented in Graph 2.

Graph 2: Area under spring crops

(thsd.ha)



The area sown to potatoes amounted to 27.9 thsd.ha, which is higher by 0.4 thsd.ha than at the corresponding time last year. Similarly, vegetables were sown on 35.8 thsd.ha, which is by 2.3 ths.ha higher than in the corresponding period of the last year.

2.1.3. Livestock production

As of 1 July 2006, number of cattle in farms of all categories increased by 2.2% as compared to the similar date of the previous year; the number of sheep and goats increased by 3.1%, poultry – by 8.4%. The increase in number of poultry is observed in farms of Khatlon oblast (by 5.2%), GBAO (by 2.3%), Soghd oblast (by 1.7%), and RRS (by 2.5%) . Number of poultry increased in farms of Khatlon oblast (by 13.1%), Soghd oblast (by 7.8%, and RRS (by 4.1%).

In the first half of 2006, farms of all categories produced 39.5 thsd. tons of meat or 104.4% as compared to the similar period of the previous year, 226.1 thsd.tons of milk (103.4%), and 49.2 mln.eggs (106.0%).

The average milk yield per cow for January-June 2006 was 796 kg decreasing by 15 kg as compared to the corresponding period of the previous year. During the reporting period, in average 42 calves were received from every 100 female cows. The average

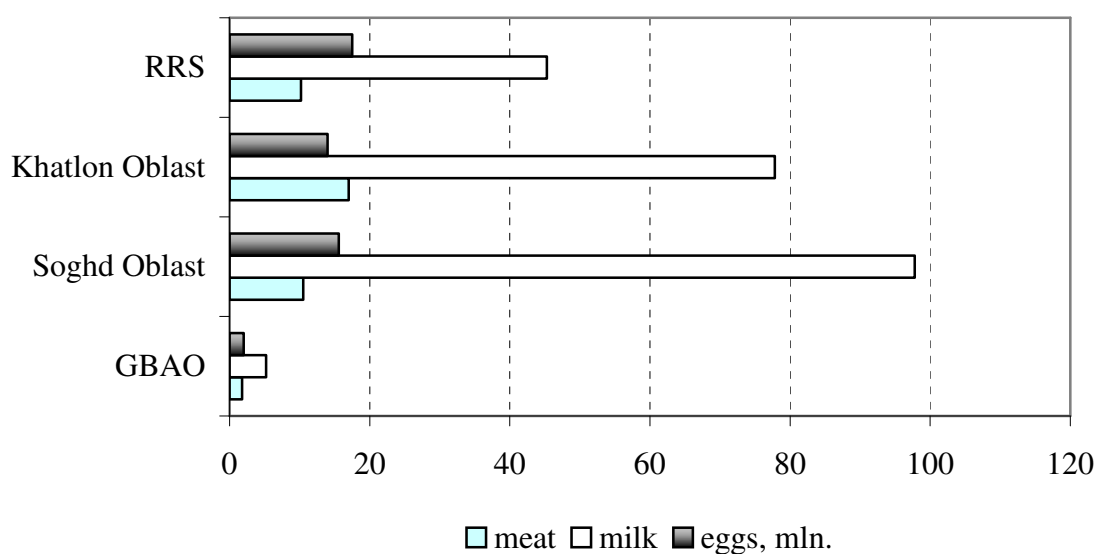
output of eggs from 1 laying hen was 62 eggs increasing by 2 pieces as compared to the similar period of 2005. Laying ability in farms of Rudaki district increased by 15 pieces, and in Shahristan district - by 11 pieces.

Table 4: Main indicators of livestock production in the Republic of Tajikistan

	2004	2005	1 quarter		1 quarter	
			2005	2006	2005	2006
Production, thsd.tons						
Meat (slaughtered)	48,2	53,7	7,3	7,7	18,9	19,8
of which:						
Beef and veal	21,8	24,3	3,3	3,5	8,5	9,0
Mutton and goats meat	23,8	26,5	3,6	3,8	9,4	9,8
Poultry	0,5	0,6	0,1	0,1	0,3	0,3
Other meat	2,1	2,3	0,3	0,3	0,7	0,7
Milk	489,5	533,0	98,1	101,5	218,5	226,1
Eggs, mln.	77,7	98,7	22,2	24,1	46,5	49,2
Productivity						
The average milk yield per cow, kg	1573	1597	359	354	860	796
The average output of eggs per laying hen, pieces	261	123	33	31	60	62

Source: data of State Committee on Statistics

Graph 3. Production of main live-stock products in all categories of farms in the first half of 2006, thsd. tons



2.2. Producer prices

Table 5: Changes in producer prices

(somoni / kg)

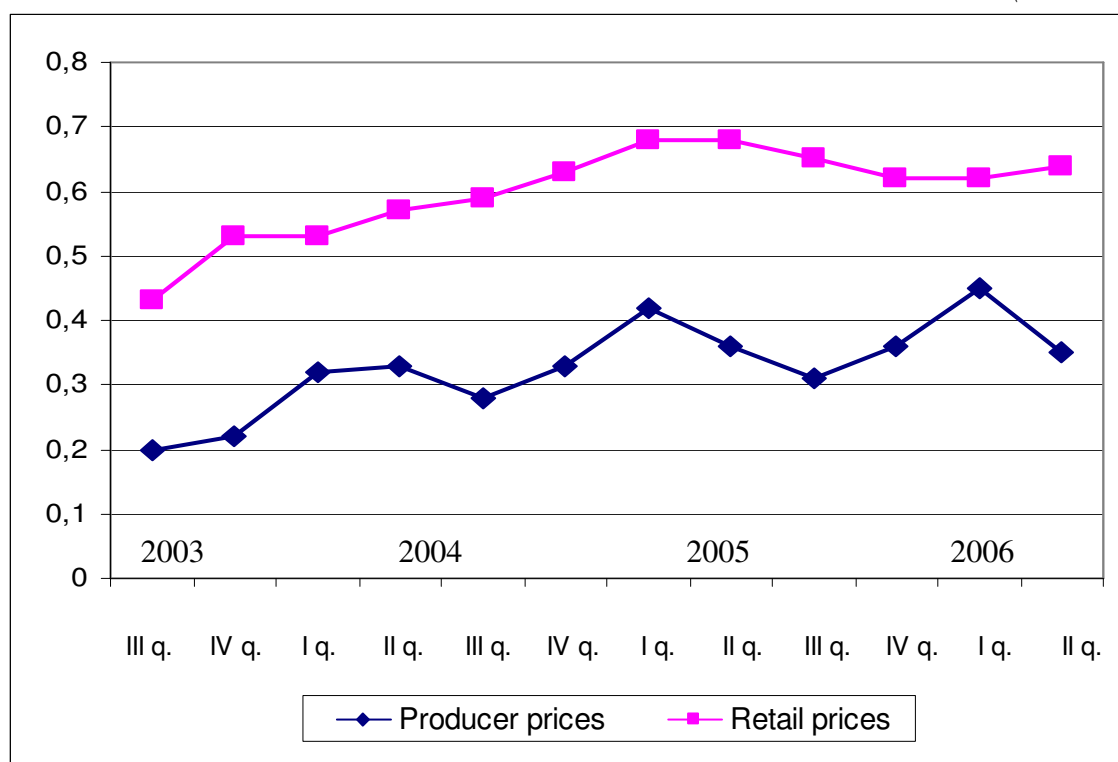
	2005				2006	
	I q.	II q.	III q.	IV q.	I q.	II q.
Wheat	0,42	0,36	0,31	0,36	0,45	0,35
Milk	0,42	0,41	0,41	0,41	0,51	0,52
Potatoes	0,19	0,19	0,29	0,36	0,28	0,35

Source: State Committee on Statistics

In the first half of 2006, the imports of wheat decreased by 15% as compared to the first half of 2005.

Graph 4. Trends in producer and retail prices of wheat

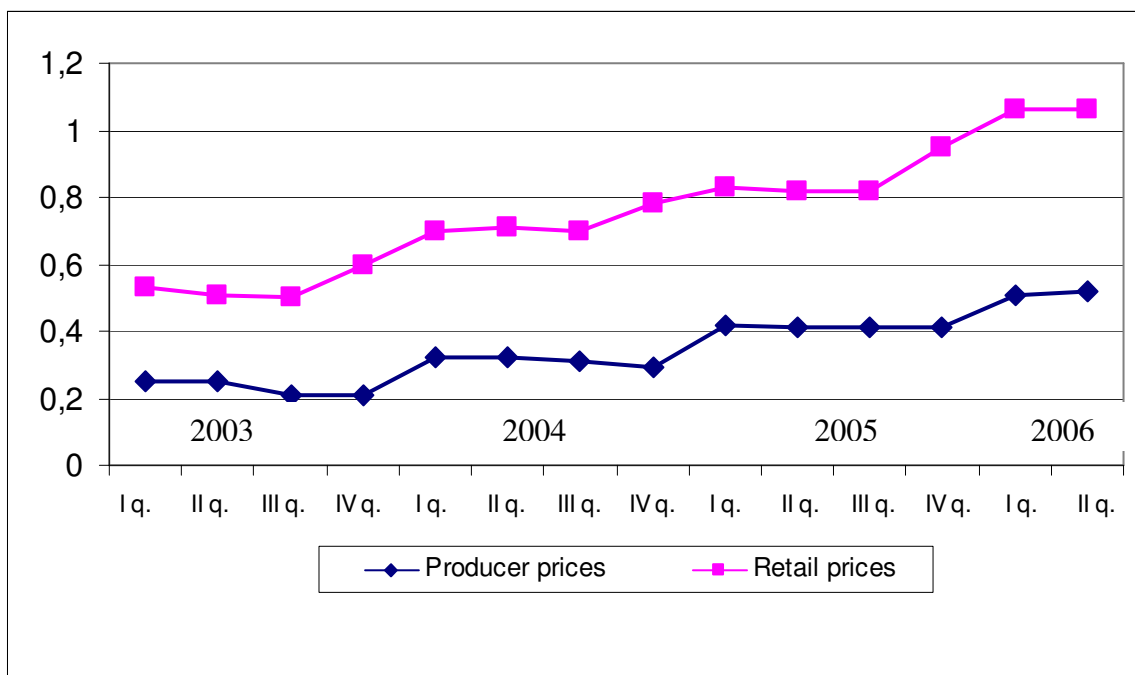
(somoni/kg)



In 2004 and 2005 the average price of milk was subject to seasonal fluctuations, and prices mainly increase in fourth quarter of each year. In the second quarter of 2006, average retail price of milk was 1.06 somoni, while wholesale price was 0.52 somoni, and increased as compared to the similar period of the previous year by 29% and 27%, respectively.

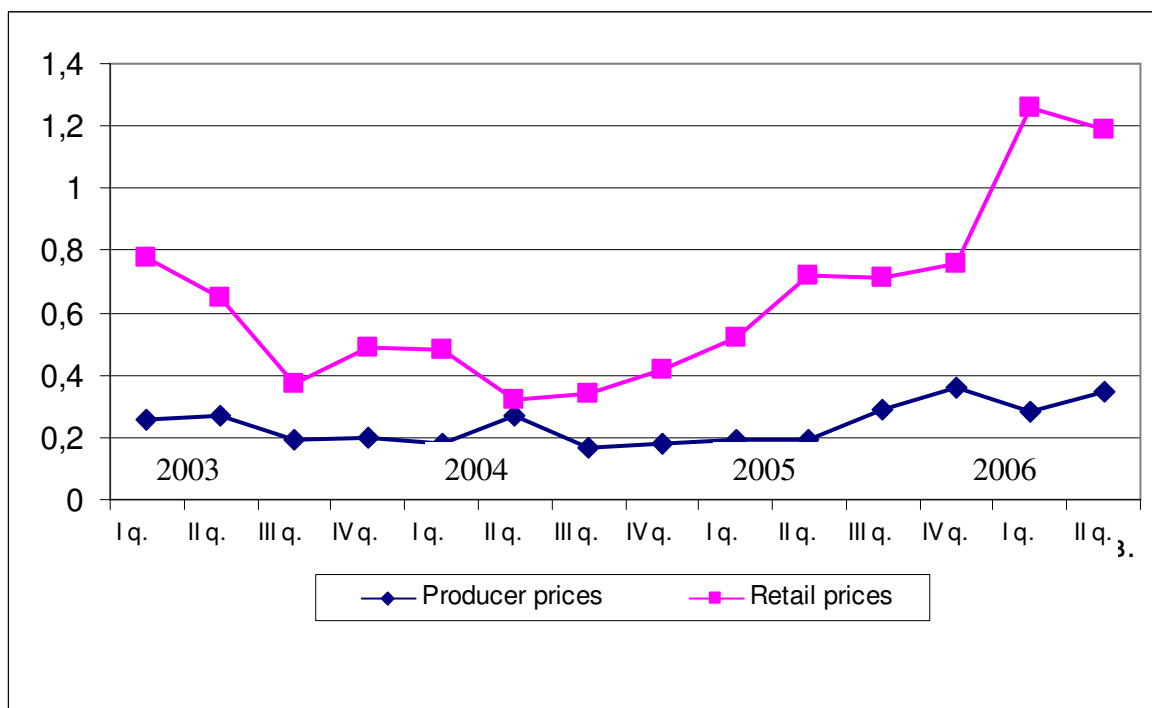
Graph 5. Trends in producer and retail prices of milk

(somoni/kg)



Graph 6. Trends in producer and retail prices of potatoes

(somoni/kg)



The given graphs show that change in retail prices is higher than in producer's ones. This trend is specific for all types of agricultural products. In the first quarter of 2006 both retail and wholesale prices of potato increased by 47 and 2.4 times, respectively, as compared to the first quarter of 2005. In the second quarter, wholesale prices continued to increase and amounted to 0.35 somoni per kg, while retail prices slightly decreased as

compared to the first quarter of 2006, but as compared to the second quarter of 2005 they increased and amounted to 1.19 somoni per kg (see Appendices 3 and 4).

2.3. Trade in basic foodstuffs

Share of food products in the total value of exports of Tajikistan accounted for 2.6% and 1.7% in the first half of 2005 and 2006, respectively. The share of food products in total volume of imports was well higher and accounted for 12.3% and 10.6%, respectively.

The major food products imported to the Republic of Tajikistan were wheat and flour (the greatest share), as well as sugar, vegetable oil, fruits, flour products (macaroni, noodles, bread, cakes, pastries), eggs, tea and others.

Imports of food products in January-June 2006 increased by 15% as compared to the similar period of the previous year. Imports of milk and dairy products increased by 67%, spaghetti, noodles and other - by 39%. Imports of wheat decreased by 15% amounting to 123.2 thsd.tons (against 145.0 thsd.tons in the similar period of 2005), and imports of flour increased by 19% amounting to 189.3 thsd.tons (against 159.1 thsd.tons in the first half of 2005).

Table 6: Exports and Imports of basic food products

	<i>(thsd.tons)</i>			
	<i>1 half of 2005</i>	<i>1 half of. 2006</i>	<i>1 half of 2005</i>	<i>1 half of 2006</i>
	<i>Exports</i>		<i>Imports</i>	
<i>Food products</i>	42,6	43,3	416,1	496,3
of which				
wheat			145,0	123,2
flour			159,1	189,3
sugar			48,1	64,3
spaghetti, noodles, elbow and other products			3,8	5,3
vegetable oil			18,8	21,9
milk and dairy products			0,9	1,5
eggs			1,8	4,7
tea	0,0	0,0	3,2	2,9
vegetables	4,0	8,4	0,7	0,4
fruits and berries	1,4	2,9	1,9	1,0
fruit and vegetable juices	7,6	6,8	0,6	1,0
Canned vegetables, tomatoes	1,8	0,8	0,3	0,7
Dry fruits	20,5	18,4	-	0,0
Share of food products in total volume, %	11,0	9,7	27,1	23,8

2.4. Availability of food per capita

The availability of food per capita is calculated using a food balance. A food balance shows for each basic food commodity, the total physical availability and utilization of that foodstuff over a given period of time, usually 1 year. **Total physical availability** is the sum of stocks at the beginning of the period, production and imports of that commodity in a given period of time. **Total utilization** covers use for human consumption + use as animal seed + seed + losses + exports + stocks at the end of the period. In any one period, the availability and utilization of the same commodity must balance. Drawn up over a succession of years, food balances usually reveal a trend in total availability, imports, exports, and the availability of food for human consumption and for feed use. Dividing the annual amount of food available for human consumption by the population gives a key indicator of availability: the average availability of food per capita per year. This measure of food availability is a national average, which takes no account of households' access (i.e. ability to produce, purchase or otherwise obtain) to food.

Table 7: Consumption of foodstuff per capita

(kg / month)

	I quarter of 2005	I quarter of 2006
Bread products (expressed in grain)	12,6	12,7
Potatoes	2,8	2,4
Vegetables and melons	5,1	5,3
Fruits and berries	1,6	1,6
Sugar and confectionery items	0,8	0,8
Meat and meat products	0,6	0,6
Milk and dairy products	3,7	4,1
Eggs (pieces)	2,0	2,0
Vegetable oil	1,0	1,0
Fish and fish products	0,0	0,0

Source: Household budget survey

The analysis of food balances shows that food availability remains stable during last years.

More detailed information is available in Appendix 5 “Food balance”.

CHAPTER III. ACCESS TO FOOD

Access to food refers to the ability of households to obtain adequate safe and appropriate foods to meet their needs for a healthy and active life. Access can be through production for own consumption, market purchases or donations / transfers.

3.1. Retail prices

During 2006 retail prices of most basic foodstuffs increased significantly as compared to December 2005, except of flour, cotton oil and eggs (See Table 8, Appendix 4).

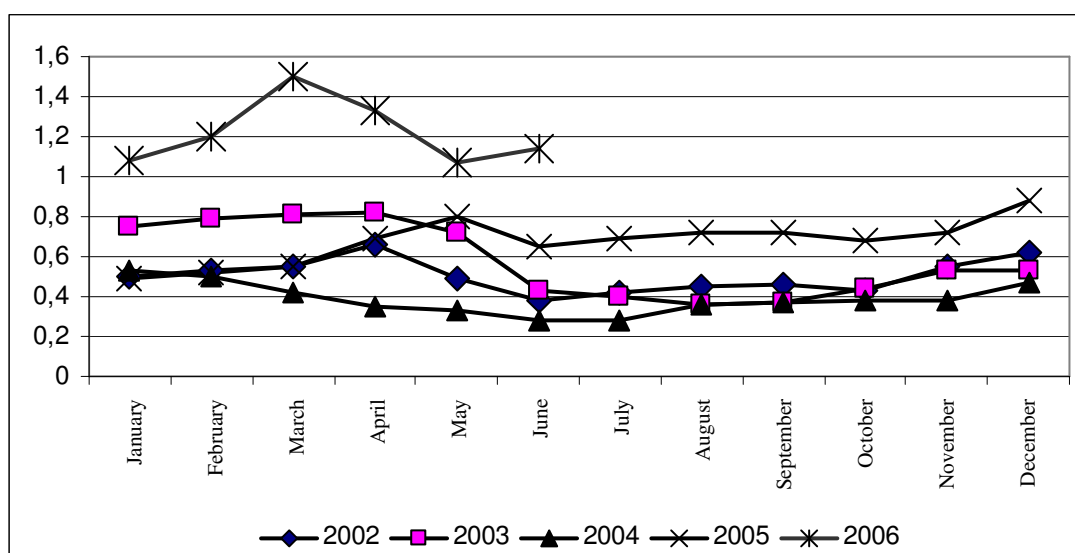
**Table 8: Average prices for some food products in consumer's sector
(average for republic)**

	2006						2005	
	January	February	March	April	May	June	June	December
Beef	7,51	7,51	7,54	7,55	7,69	7,81	6,61	7,51
Animal oil	11,35	11,45	11,35	11,37	11,42	11,42	9,76	11,39
Cotton oil	2,66	2,63	2,59	2,56	2,55	2,58	2,69	2,69
Milk	0,98	0,98	1,03	1,03	1,00	0,99	0,76	0,96
Eggs (10 pieces)	3,09	2,83	2,49	2,56	2,61	2,71	2,80	3,37
Sand sugar	1,90	2,20	2,46	2,46	2,49	2,51	1,75	1,75
Salt	0,35	0,35	0,35	0,35	0,35	0,35	0,35	0,35
Light wheat flour	0,98	0,97	0,95	0,95	0,95	0,94	1,01	0,98
Bread made from light wheat flour	1,00	1,00	1,00	1,00	1,00	1,00	1,00	1,00
Rice	2,30	2,30	2,38	2,45	2,56	2,73	2,09	2,30
Potatoes	1,08	1,20	1,17	1,33	1,07	1,14	0,64	0,88
Onion	0,54	0,57	0,67	0,66	0,49	0,50	0,33	0,46
Carrot	0,27	0,27	0,28	0,49	0,85	0,98	0,41	0,22
Apples	1,68	1,80	2,04	2,14	2,03	1,64	1,60	1,62
Vodka	5,57	5,87	5,82	5,82	5,82	5,88	5,57	5,57

During 2006, the highest increase in prices was registered for carrot (3.7 times), sand sugar (42.9%), potatoes (29.1%), rice (18.9%), cabbage (16.8%), onion (9.1%), buckwheat (6.3%), mutton (6.1%), beef (3.9%), milk and semolina (3.2%), live fish(2.6%), chocolate sweets (0.5%), and margarine (0.4%).

At the same time, the highest decrease in prices was registered for eggs (19.6%), apples (10.2%), evaporated milk formula (6.2%), pearl barley (5.1%), light wheat flour (4.2%), cotton oil (3.9%), pasta (1.8%), and poultry meat (1.5%).

Graphs 7: Average monthly retail prices for potatoes (somon / kg)



Potatoes. Retail prices of potatoes are subject to seasonal fluctuations and also to fluctuations in supply and demand. The highest seasonal price is normally recorded in the second quarter of each year, prior to the first new harvest. However, during 2005 and the first quarter of 2006, the prices of potatoes were increasing continuously. In May of the current year, the prices of potatoes decreased due to new harvest amounting to 1.07 somoni per kg, but in June they again increased by 6.5%.

Flour. In 2005 and first quarter of 2006 the price of flour was subject to slow decrease. In the first half of 2006 as compared to the first half of 2005 the prices decreased by 7% and amounted to 0.94 somoni per kg.

Beef and other kinds of meat. During 2005, the prices of *beef* were subject to increase. Thus, in January 2006 the prices of beef amounted to 6.64 somoni, and as of the end of 2005 they reached 7.6 somoni per kg. During January - June 2006, the prices increased by 4% and amounted to 7.81 somoni per kg.

During 2005, the prices of *mutton* were also subject to increase. Thus, in January 2006 the prices of mutton amounted to 8.13 somoni, and as of the end of 2005 they reached 8.76 somoni per kg. During January - March 2006, the prices increased by 0.7% and amounted to 8.85 somoni per kg. During the second quarter of 2006, prices increased by 6.1% amounting to 9.39 somoni per kg.

3.2. Incomes and expenditures

The source of information on household incomes and expenditures is the Household Budget Survey which is conducted on the basis of a monthly survey of 925 households and is comprised of the following: demographic information on the composition of the family, housing and infrastructure, volume of consumption in the family including domestically manufactured items, economic activity in both agricultural and non-agricultural sectors.

3.2.1. Incomes

In 2005 cash incomes of population amounted to 44.20 somoni in a month per capita and increased by 21.5% (adjusted for inflation) as compared to 2004. In the first quarter of 2006 as compared to the first quarter of 2005, per capita cash income increased by 27.4% and amounted to 46.65 somoni. (See Table 9).

Table 9: Trends in population incomes and expenditures

	I quarter 2005	I quarter 2006
Average per capita incomes (somoni / month)	36,63	46,65
Growth in real incomes (%)	121,9	117,4
Average monthly salary	80,23	98,75
Growth in real salary (%)	140,3	113,5
Average per capita expenditures (somoni / month)	36,52	47,22
Growth in real expenditures (%)	122,2	119,2

Source: Household Budget Survey and current statistical data

The most important sources of cash incomes of households in the first quarter of 2006 continue to remain labor incomes - 57.2% and receipts from sales of agricultural products - 14.5%. In the first quarter of 2006, the gap between the average incomes of the highest and the lowest income deciles amounted to 5.4 times.

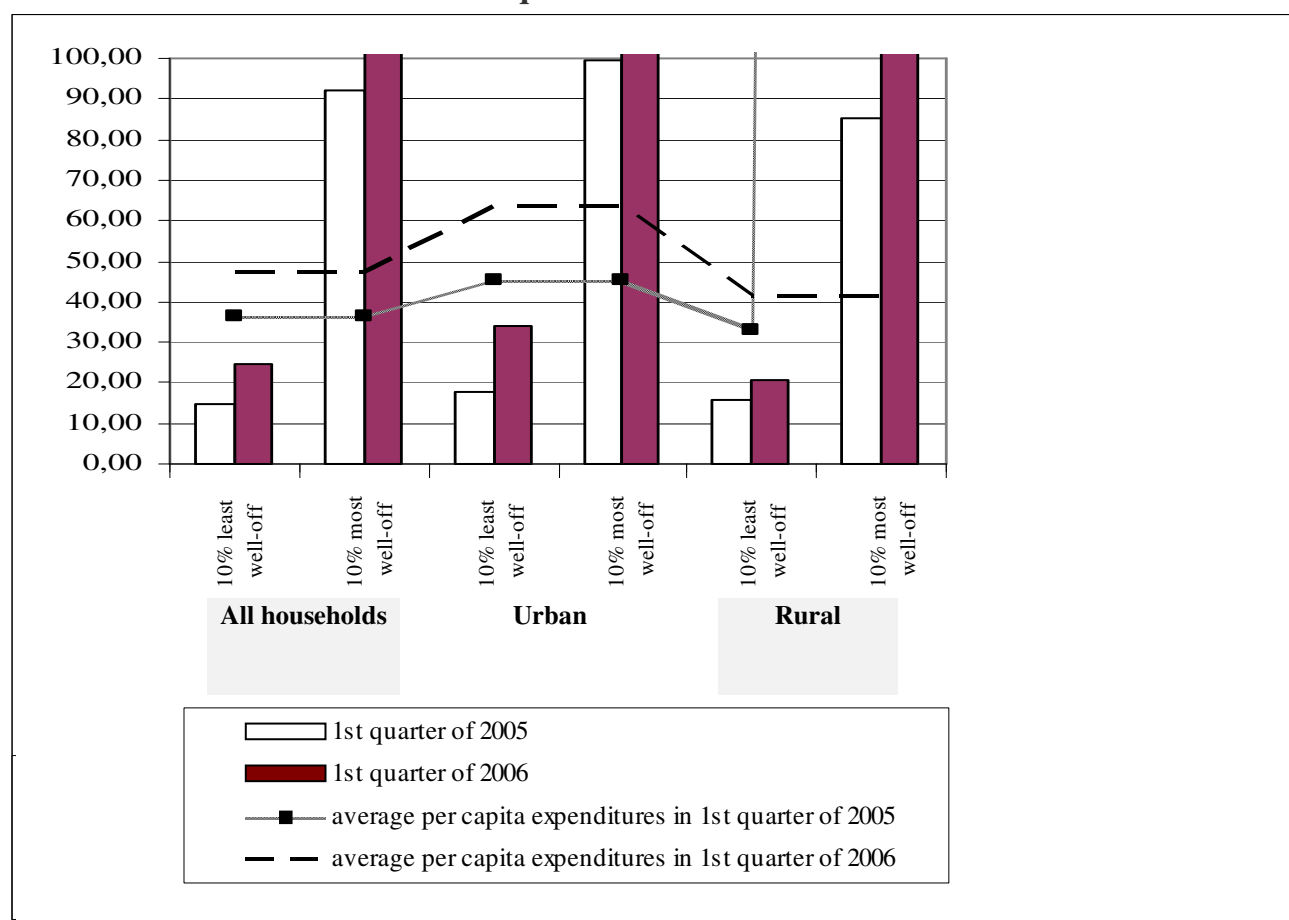
As of the end of June 2006, total arrears in salary payments for the republic made up 26.9 mln.somoni.

3.2.2. Expenditures

In 2005 and first quarter of 2006, average expenditures of population have risen mainly due to increase in prices (see Appendix 10 and Graph 8).

The gap between expenditures of the highest and the lowest deciles increased from 5.5 times in 2004 to 6.6 times in 2005. However in the first quarter of 2006, the gap decreased to 4.7 times.

Graph 8: Growth of per capita expenditures by decile groups in the first quarters of 2005 and 2006



3.3. Poverty in the Republic of Tajikistan

Poverty and food & nutrition insecurity are closely related and form a vicious circle. Food and nutrition insecurity is defined as “When people lack secure access to sufficient amounts of safe and nutritious food for normal growth and development and an active and healthy life. It may be caused by the unavailability of food, insufficient purchasing power, inappropriate distribution, or inadequate use of food at the household level. Food insecurity, poor conditions of health and sanitation, and inappropriate care and feeding practice are the major causes of poor nutritional status. Food insecurity may be chronic (persistent), seasonal or transitory.

The poor frequently suffer from any or all of the following characteristics: inadequate money, poor education, and few resources, poor access to employment opportunities, and have little power. They tend to live in poor housing and may have poor access to food, health services, sanitation. Without targeted actions to identify and alleviate poverty, the poor tend to become poorer and possibly more food insecure.

When determining poverty rate many factors that can be grouped into three groups should be considered:

- ◆ Incomes (total family income by sources)
- ◆ Wealth (movable assets and real estate, housing conditions, communal services)
- ◆ Population (access to primary health services and education, occupational activities, employment, unemployment)

Indicators of Poverty Reduction Strategy of the Republic of Tajikistan are given in Appendix 2.

3.4. Food insecurity: households spending more than 50% of expenditures on food

Food insecurity means a situation when people have no regular physical, economic or social access to adequate quantities of qualitative and safe food required for their nutrition, which meets their preferences for an active and healthy life.

The results of the Household Budget Survey show that the share of expenditures for food in the structure of total household's expenditures accounted for less than 70% and decreased by 5.9% as compared to the first quarter of 2005. The share of expenditures for food in urban area decreased by 7.4%, and in rural area - by 4.4%. At the same time, pensioners spend for food 74.57% of total consumer expenditures (Table 10).

**Table 10: Share of consumer expenditures for food
in total structure of household expenditures**

	2004	2005	I quarter of 2005	I quarter of 2006
Republic of Tajikistan	64,5	63,7	65,8	59,9
Urban	68,6	67,8	67,8	59,6
Rural	62,1	61,4	64,6	60,2
Oblasts				
Dushanbe	84,24	84,36	86,2	56,5
Sogd oblast	57,2	55,94	55,9	54,7
Khatlon oblast	66,84	66,60	67,3	67,5
RRS	66,81	65,84	72,1	60,4
Vulnerable groups of population				
Households having 3 and more children	64,76	64,8	x	61,8
Pensioners	79,21	74,57	75,4	67,1

More detailed information on expenditures, incomes and deciles is available in Appendix 6.

CHAPTER IV. USE AND UTILIZATION

Use of food refers to the selection, composition, preparation and allocation of food within the family. Utilization of good refers to the ability of the human body to take and use food within the body. Food use covers knowledge of appropriate diets, and proper allocation of food. The ability of the body to utilize food is affected by its state of health and access to clean drinking water, access to basic health services, etc. The ultimate measure of food security is the nutritional status of the population.

4.1. Consumption of food products by the population

One of the measurements of food and nutritional insecurity is the calculation of daily calorie intake per one household member. The average daily calorie intake in 2005 was 2106.53 Kcal per capita, which is higher the recommendations of the World Health Organization (WHO) (2100 Kcal per a day). In 2006, the average daily calorie intake decreased to 2045.83 Kcal per capita.

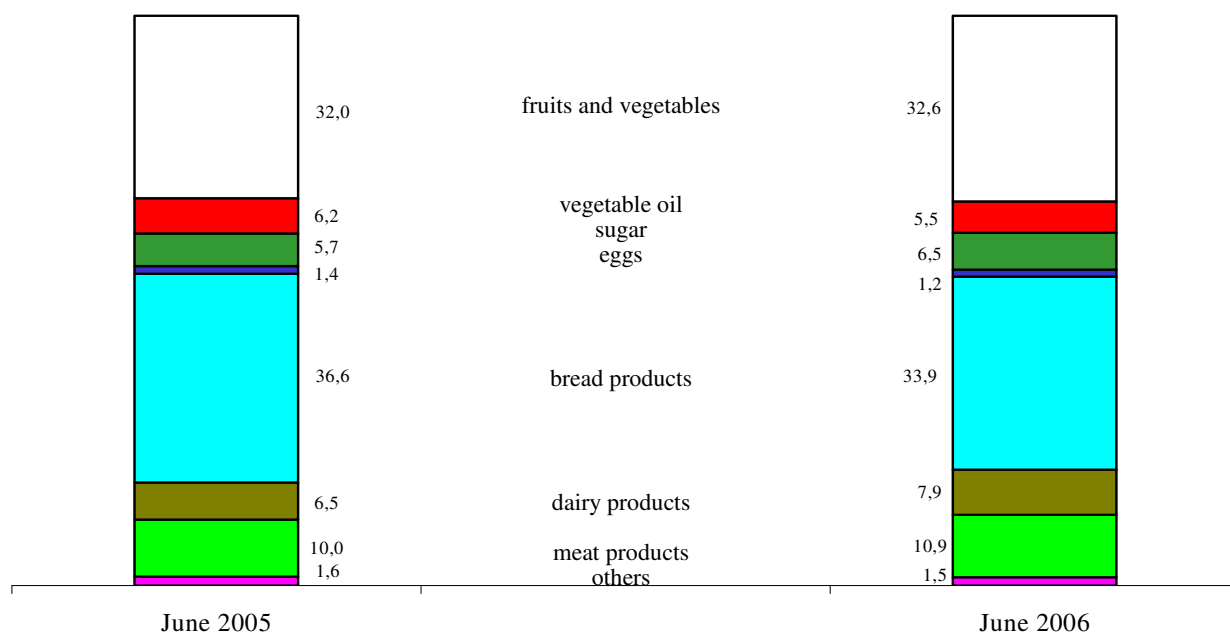
In the first quarter of 2006, in all regions of Tajikistan consumption of bread and bread products exceeded approved medical norm by 17% and amounted on average to 38 kg per one household member per a quarter.

In the first quarter of 2006, average consumption of potatoes in Tajikistan amounted to 7.1 kg per capita, vegetables and melons – 15.9 kg, milk and dairy products – 12.3 kg, meat and meat products – 1.9 kg, vegetable oil – 3.1 kg, eggs - 6 pieces, sugar and confectionery – 2.5 kg, fruits – 4. kg.

In total structure of household's expenditures for food, bread and bread products occupies the first place (39.4%).

The cost of *consumer's basket*, at actual consumption (according to household survey 2004) amounted to 44.76 somoni per one household member in prices of end of June 2006, while the cost of food basket according to rational nutritional standard would amount to 93.91 somoni.

**Structure of consumer's basket in June 2005-2006
(as of the end of the month, in %, per one household member)**



Appendix 9 shows the detailed information on per capita food consumption in the households of the Republic of Tajikistan.

Table 11: Nutritional values of foods consumed per a day (excluding beer and wine)

	<i>Per one household member per a day</i>	<i>of which:</i>		<i>Per one household member per a day</i>	<i>of which:</i>	
		<i>urban area</i>	<i>rural area</i>		<i>urban area</i>	<i>rural area</i>
	<i>1st quarter 2005</i>			<i>1st quarter 2006</i>		
Proteins, gr.	46,37	37,71	49,57	46,67	37,48	50,01
of which animal, gr.	5,82	4,50	6,30	5,94	4,92	6,32
Fats, gr.	43,66	43,56	43,69	46,00	44,05	46,72
of which animal, gr.	6,62	6,43	6,69	7,21	7,38	7,15
Carbohydrate, gr.	353,97	292,66	376,58	354,31	287,51	378,54
Caloric value of consumed food, k/calories	2023,39	1786,70	2110,58	2045,83	1764,51	2148,13
of which animal, gr.	99,64	83,97	105,44	106,78	94,42	111,28

4.2. Food security indicators not related to income

Food utilization also depends on the health status of the population as well as on the knowledge of hygiene and appropriate diets, on access to basic health services and utilities such as clean drinking water and sanitation.

4.2.1 Population morbidity

Table 12. Population morbidity caused by some specific infection diseases*(cases)*

	2004	2005	2005.		2006.	
			<i>1 quarter</i>	<i>2 quarter</i>	<i>1 quarter</i>	<i>2 quarter</i>
Total number of registered cases	99296	102907	10238	20973	10851	21963
of which:						
Acute enteric infections	70521	79927	4110	14710	5450	16662
of which:						
Bacterial dysentery (shigellosis)	1557	2103	192	373	274	481
Typhoid fever	2481	2010	320	277	233	254
Tuberculosis, new cases	3324	4204	651	1378	833	1266
Brucellosis	1309	1614	206	791	263	641

Table 13. Morbidity of children (0-14) by some specific infection diseases*(cases)*

	2004	2005	2005		2006	
			1 quarter	2 quarter	1 quarter	2 quarter
Total number of registered cases	75255	77361	6735	15028	7457	15822
of which:						
Acute enteric infections	58797	65827	3012	12719	4515	13690
of which:						
Bacterial dysentery (shigellosis)	700	760	63	147	105	171
Typhoid fever	966	810	156	112	87	94
Tuberculosis, new cases	241	291	38	119	44	102
Brucellosis	187	226	27	125	28	87

In the second quarter of 2006 incidence of infection diseases increased by 4.7% as compared to the second quarter of 2005, of which incidence of infection diseases among children 0-14 years old increased by 5.3%. Cases of acute enteric infections account for 76% of total number of infection diseases (among children of 0-14 years old this indicator reached 86.5%). As compared to the similar period of the previous year, number of cases of acute enteric infections increased by 13.3% (7.6% for children aged 0-14), of which cases of bacterial dysentery increased by 29% (16.3% for children aged 0-14), mainly due to use of poor potable water. At the same time, number of registered cases of typhoid fever decreased by 8.3%.

During the reported period, decrease in number of registered cases of tuberculosis by 8% as compared to the second quarter of 2005 was observed.

In the second quarter of 2006 as compared to the second quarter of 2005, number of cases of brucellosis decreased by 19%.

METHODOLOGY

1. Methodology of food security analysis

“Food and nutrition security is achieved if adequate food (quantity, safety, quality, social-cultural acceptance) is available and accessible for and satisfactory used and utilized by all individuals at all time to live a healthy and active life”.

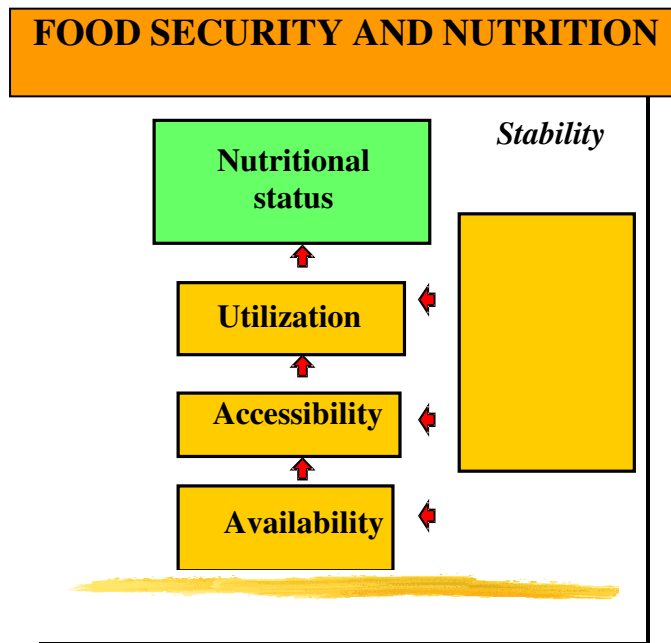
Availability physical existence of quantitatively and qualitatively adequate and safe food items.

Access: all households and household members have sufficient resources to obtain appropriate food (*through* production, purchase or donation)

Use and utilization: adequate knowledge, health and sanitation to enable the human body to digest and utilize that food

Stability: continuous ensuring of availability of, access to and appropriate use and utilization of food. If not, individuals will suffer from chronic or transitory food insecurity

For case of reference the four pillars of food and nutrition security are pictured below:



All four dimensions need to be fulfilled if there is to be food and nutrition security. As individuals and households live in a society, the 4 dimensions of FNS need to co-exist at all levels, from the individual and household level (**micro level**), to the community (village, rayon, oblast) level, representing the **meso level**, and the nation and global level

(macro level).

To monitor food security it is necessary to select relevant indicators and to measure these indicators at regular intervals.

2. Food balance methodology

Food balances for basic foodstuffs are compiled in natural terms.

In the course of the compilation of the food balance, the closing stocks as of December 31 in one year become the opening stocks on January 1 in the following year. With regard to imports and exports of products, the official data was used, in respect of production preliminary data.

Seed use is calculated on areas sown with agricultural crops as well as actual amount of seeds used for 1 ha. The calculation of lost was made according to the official norms.

In order to determine the number of eggs for the incubation the actual number of poultry offspring as well as norms on the number of chicken from the eggs laid for incubation.

The calculation of the volume of food products consumed by population as well as expenses on animal feeding was based on the data obtained during the survey of 925 households. The calculation of meat consumption also included the meat consumed in the course of observing national traditions (funeral, weddings, religious feasts, etc.)

Glossary

The *unemployed* - people of 16 and more who during period under review had no job (profitable occupation); were in search for a job i.e. applied to public employment offices or used alternative ways of job finding as well as were ready to start working.

Gross Domestic Product (GDP) - a general indicator of economic activity which is calculated in basic and market prices (nominal GDP) and in comparable prices (real GDP).

Consumer price index on goods and paid services to the population (CPI) - characterizes the change in the general price level for goods and services over time. The index measures the correlation of the value of actually set of goods and services during the given period to the value thereof during the basic period.

Average nominal monthly salary is calculated by dividing actually accrued salary fund to the staff and part-time employees by the number used for the calculation of average salary and number of months in a year during corresponding period.

Average daily per capita calorie intake measure the calories in the consumed food products per one household member as well as chemical composition in protein and fats.

Official unemployment rate - the ratio of people officially registered as unemployed to the number of economically active population, expressed in per cent.

List of abbreviations

GDP	Gross Domestic Product
GBAO	Gorno-Badakhshan Autonomous Oblast
CPI	Consumer price index on goods and paid services to the population
RRS	Regions of republican subordination
MDG	Millennium Development Goals

Appendix 1

Review of hydro meteorological conditions on the territory of the Republic of Tajikistan during the second quarter of 2006

Meteorological conditions

In **April**, the average monthly air temperature was above the norm by 4-8 degrees. The most part of the month was characterized by higher temperature conditions. The warmest weather was observed during the last five days of the month. During this period day-time air temperature reached 30-35 degrees in valleys, 38 degrees in southern regions, 20-25 degrees in mountains, and 10-15 degrees in high mountain areas.

At the end of first decade of the month and beginning of the second decade, inflow of cool air was observed. Day-time temperature in valleys fell by 7-12 degrees and didn't exceed 15-20 degrees. However, the coldest weather was registered on 9 April, when day-time air temperature in valleys fell to 7-12 degrees, and night-time temperature fell to 3-6 degrees. The average daily temperature during this period was below the mean values by 4-7 degrees.

During the rest part of the month, maximum air temperature in valleys fluctuated from 22 to 29 degrees during day-time, and from 2 degrees below zero to 3 degrees below zero at nights.

Monthly amount of precipitations was mainly below the mean annual values. During a month, fogs were observed in piedmont areas and passes. Thunderstorms growled frequently in piedmont areas, and on 6.9. and 29 April hailfalls were registered in some regions of the republic. Dust-storm was registered in Yavan on 3 April, and mist was observed on 20 and 29 April. During fallouts in some regions increase of wind force up to 17-22 m/s was registered.

May was characterized by relatively dry and warm weather. The average monthly air temperature was above normal by 2-5 degrees and amounted to 21-27 degrees in valleys, 12-17 degrees in mountains, and 6-9 degrees in high mountain areas. Hot weather prevailed during the first half of the month, however, the hottest weather was registered during the period from 10 to 16 May, when day-time temperature reached 35-39 degrees (40-43 degrees in southern regions), and average daily air temperature was above the mean annual values by 5-10 degrees.

Decrease of day-time air temperature was observed in the second half of the month, when the maximum temperature in valleys was 30-35 degrees.

Monthly amount of precipitation in valley areas of RRS and Khatlon oblast was 7-16 mm (5-20% of the norm), in Soghd oblast - 7-35 mm (30-90% of the norm), in mountain areas of RRS and GBAO - 7-49 mm (10-96% of the norm).

In **June**, the average monthly air temperature on the most part of the republic was above normal by 0.5-2 degrees, apart from the eastern part of GBAO, where it was below normal by 0.4-1.2 degrees, and amounted to 25-28 degrees in valleys, 16-20 degrees in mountains, and 7-11 degrees in high mountain areas.

During the first half of the month, the maximum air temperature in valleys did not exceed 30-35 degrees, but the coolest weather was registered on 11 June, when the average daily temperature fell to 27-30 degrees and was below the norm by 2-3 degrees.

The second half of the month was characterized by the warm weather, when day-time air temperature was 33-38 degrees (in the southern part of the republic it reached 40-43 degrees). Average daily air temperature was above the mean annual values by 3-5 degrees.

Precipitations were very seldom. Monthly amount of precipitations was below the mean annual values (60-80%).

Hydrological conditions

During first and third decades of **April**, increase of water content in Yahsu, Kyzylsu rivers, and rivers of southern slope of Gissar range was observed on 29-30 April water discharge in Yahsu, Kyzylsu and Varzob rivers were 1.5-2 times higher of the values observed during this season. The second decade was characterized by decrease of water content. Monthly average water discharge of the most rivers of the republic was within and above the norm (80-150%), and within or below last years values (70-110%).

During the month, the level of Sarez lake decreased by 81 sm and amounted to 2042 sm. Content of Nurek reservoir increased by 0.150 mln.m³ and amounted to 6127 mln.m³, which is higher than the level of the previous year by 0.130 mln.m³.

During April, water level in Kairakum reservoir decreased by 0.020 mln.m³ and amounted to 3399 mln.m³, which is less than the level of the previous year by 0.015 mln.m³.

Monthly average water discharge in Vakhsh river was below the last year values by 83%, and below the norm by 88%.

During the first and second decades of **May**, increase of water content in the rivers of the republic was observed. In the third decade, the water level started to decrease gradually, due to decrease in air temperature.

Monthly average water discharge of the most rivers of the republic exceeded the norm (110-160%) and last years values (100-140%). During the month, the level of Sarez lake increased by 57 sm and amounted to 2099 sm. Content of Nurek reservoir increased by

0.547 mln.m³ and amounted to 6674 mln.m³, which is higher than the level of the previous year by 0.585 mln.m³. Water level in Kairakum reservoir decreased by 0.182 mln.m³ and amounted to 3217 mln.m³, which is less than the level of the previous year by 0.270 mln.m³. Monthly average water discharge in Vakhsh river was above the last year values by 113%, and above the norm by 112%.

In **June**, gradual decrease of water content was registered in Yahsu and Kyzylsu (Yujnaya) rivers, while water content in other rivers of the republic was subject to fluctuations. Monthly average water discharge of the most rivers of the republic was within and below the norm (60-98%), and below last years values (30-80%).

During the month, the level of Sarez lake increased by 12 sm and amounted to 2111 sm. Content of Nurek reservoir increased by 0.444 mln.m³ and amounted to 7118 mln.m³, which is higher than the level of the previous year by 1,303 mln.m³. During the month water level in Kairakum reservoir decreased by 0.659 mln.m³ and amounted to 2558 mln.m³, which is less than the level of the previous year by 0.762 mln.m³. Monthly average water discharge in Vakhsh river was below the last year values by 68%, and below the norm by 81%.

Review of avalanches and mudflows

No avalanches were observed during **April**, no avalanche warning was given. During April 3 warning on mud-flows with total duration of 5 days were given (all forecasts were proved by 100%). Mud floods were registered on Varzob, Luchob, and Yavansu rivers. On 29 April amount of precipitation in Varzob clove (Gushar settlement) was 114 mm. As a result, the mudflows washed out roads and caused damage of power transmission line. At the same day, in HMS Ganjina (Khatlon oblast, Hurason district) mudflow was registered on nameless say iflowing to Vakhsh river, caused by rain and hailstorm. As a result, 10 km of road between Haeti Nav and Gandjina settlements was washed out. There was one victim among population.

In view of lack of snow cover, no avalanche warning was given in **May**. Road traffic through Anzob pass was opened from 20 May, and through Hurabad pass from 25 May.

Since there were no continuous and intensive rains, no mudflows were observed in May. However, on 24 May one small mudflow was registered on 214 km of Dushanbe-Tavildara road and washed out a roadway. No victims or destructions were registered.

In view of lack of snow cover, no avalanche warning was given in **June**. Since there were no continuous and intensive rains, no mudflows were observed.

Appendix 2

PRSP Indicators in the Republic of Tajikistan

Sector	Goals	Indicators	Indicators of SCS						
			1990 ⁰	1999	2003	2004	2005	1 half of 2006 ¹	
Complete PRS	Increase real incomes in the country	GDP per capita (USD)	-	178,2	236,7	309,2	337,2	-	
	Improved level of living of poorest stratum of population	Employment rate among able-bodied population (%)	-	55,6	51,7	55,3	54,3	-	
Macroeconomic management	Sequent macroeconomic management oriented to reaching economic growth required for increase of population incomes	Real GDP growth (%)	98,4*	103,7	110,2	110,6	106,7	-	
		Inflation rate (%)	-	26,3	13,7	5,7	7,1	7,5	
		Credits provided by bank sector (as percentage of GDP)	...	3,6	3,3	7,4	7,3	-	
		Share of private sector in GDP (%)	-	29,3	39,1	39,8	41,5	-	
		Direct foreign investment (in % to GDP)	x	0,2	1,7	1,1	2,4	-	
		State revenues (in % to GDP)	46,8	18,6	17,3	17,9	18,1	21,3	
		Public expenditures (in % to GDP)	43,4	17,6	16,2	17,7	19,6	20,5	
		Public expenditures for health sector (in % to GDP)	4,8	1,0	0,9	0,9	1,1	1,3	
		Public expenditures for education (in % to GDP)	10,4	2,1	2,41	2,7	3,5	4,2	
		Public expenditures for social protection and insurance ³⁾ (in % to GDP)	-	0,2 ²⁾	2,3	2,6	3,3	3,8	
		Public expenditures for environment protection (in % to GDP)	0,03	-	0,04	0,05	0,04	0,5	
		Public expenditures for agriculture (in % to GDP)			0,5	0,5	0,5	0,6	
		Public expenditures for irrigation (in % to GDP)			0,2	0,1	0,12	0,13	
		Public expenditures for infrastructure (transport and communication) ⁴⁾ (in % to GDP)			1,2	1,4	1,1	1,0	
		Average monthly salary in public sector as compared to private sector (%)			64,5	146,9	126,5	166,6	-
		Registered unemployment rate			3,0	2,4	2,0	2,0	2,4
Population incomes, according to households' survey, per one household member (somon)				35,38	44,42	55,48	-		
Reforms in public administration	Creation of effective judicial service	Average salary of judge (somon)		20,9	50,34	54,36	91,16	-	
Social protection	Guaranteed incomes of poor	Number of employed per one pensioner (persons)	2,2	3,10	3,53	3,59	3,84	-	
		Average monthly pension (somon)	x	3,53	13,07	16,92	27,51	41,69	

Sector	Goals	Indicators	Indicators of SCS						
			1990 ⁰	1999	2003	2004	2005	1 half of 2006 ¹	
	populations, ensuring effectiveness of targeted assistance	Number of pensioners receiving disability pension (thsd.persons)	48,0	67,8	78,2	79,1	84,1	85,8	
Educa tion ⁵	Increase of literacy rate and level of general education of population	Coverage by primary education ratio [7-10 years old (1-4 forms)]	90,9	97,4	99,6	99,2	99,0	-	
		Coverage by basic education ratio [7-15 years old (1-9 forms)]	94,8	89,1	95,4	95,4	95,6	-	
		Coverage by secondary education ratio [16-17 years old (10-11 forms)]	x	35,7	42,0	46,1	46,4	-	
	Ensuring access to primary and secondary education ⁵	Number of pupils per 1 teacher							
		Schools-	14	15,1	16,2	17	17		
		institutions of higher educations- specialised secondary educational establishment -	12,8 11,5	13,4 11	16,0 11,1	16,2 11,0	17,4 13	-	
	Eliminate gender disparity in access to education	Proportion of boys and girls in primary school:	boys	51,2	52,6	52,0	51,8	52,0	
			girls	48,8	47,4	48,0	48,2	48,0	
		in secondary school:	boys	49,8	59,6	60,5	60,7	51,2	-
			girls	50,2	40,4	39,5	39,3	38,8	
Healt h care		Improved quality of public health services and improved access of poor population to health services	Maternal mortality	42,9	44,2	37,7	39,0	33,1	-
			Infant mortality	43,3	65 ⁵	-
	Mortality of children under 5 years old		65,0	79 ⁵	-	
	Share of births delivered with assistance of skilled medical personnel, %		-	66,6	71,4	75,1	76,2	-	
	Percentage of children aged 1 year who received DPT vaccinations		86,8	98,7	96,3	96,0	94,5	-	
	Number of HIV cases		-	-	119	317	506	544 ⁶	
	Number of tuberculosis cases per 100000 population		44,4	42,1	66,5	66,6	60,1	30,0	
	Number of malaria cases per 100000 population		-	222,0	71,6	48,4	29,1	4,3	
	Number of typhoid fever and paratyphoid ABC per 100000 population		48,0	122,0	48,9	38,5	29,4	7,0	

Sector	Goals	Indicators	Indicators of SCS					
			1990 ⁰	1999	2003	2004	2005	1 half of 2006 ¹
		Number of measles cases per 100000 population	130,4	3	33	0,3	0	0,03
Agriculture and Irrigation	Ensure effective use of land and water, as well as fair access of poor population to land and water	Share of population engaged in agricultural sector, %	-	64,4	67,6	66,6	67,5	-
		Wages and salary in agricultural sector, somoni	-	5,38	27,00	35,63	38,39	33,04
Development of private sector	Create favorable conditions for private sector functioning	Receipt of funds from privatization by state budget, mln.somoni	-	17,7	21,7	35,9	43,5	-
Infrastructure	Ensure access to steady and satisfactory infrastructure public services for the poorest stratum of population	Number of telephone lines per 100 residents	-	3,51	3,65	3,83	3,29	3,96
		Number of mobile (cell) phones per 100 residents	-	...	0,73	2,5	5,9	8,2
		Number of Internet users per 1000 inhabitants	-	...	0,2	0,3	2,8	1,4
		Share of population having continuous access to potable water (urban and rural)	-	44%	-	-	-	-
Environment and tourism	Eliminate serious environmental threats to population health and safety of ecosystem	CO ₂ emission per capita, and use of destroying chlorine and fluorine containing compounds (metric tons of ozone depletes)	-	0,007	0,002	0,001	0,001	-
	Promote establishing of positive image of the country as well as development of tourism	Number of tourists, of which foreigners	-	/-	/887	/401	/318	/355

0 – reference year for MDG

1 – preliminary data of SCS

² - social security

³ - social protection and social insurance

⁴ – data on energy are reflected in item on «данные по энергетике отражены в статье «Fuel and energy complex»

⁵ - MICS-3 ⁶ - for the 1st May 2006 * - for 1992

APPENDIX 3. CHANGES IN AVERAGE WHOLESALE PRICES (SUPPLY) IN TAJIKISTAN (somon / kg)

Regions	I quarter			II quarter			III quarter			IV quarter		
	2004	2005	2006	2004	2005	2006		2004	2005		2004	2005
	Potatoes											
GBAO	-	-	-	0,30	0,30	-		0,27	0,30		0,29	0,40
Sogd Oblast	0,16	0,12	0,25	0,26	0,13	0,23		0,11	0,10		0,12	0,31
Khatlon Oblast	0,5	0,43	0,38	0,27	0,30	0,35		0,18	0,43		0,17	0,31
RRS	0,50	0,30	0,64	0,26	0,29	0,70		0,19	0,37		0,20	0,40
Average in the Republic	0,18	0,13	0,28	0,27	0,19	0,35		0,17	0,29		0,18	0,36
	Milk											
GBAO	0,50	-	-	0,50	0,50	1,0		0,45	-		0,44	-
Sogd Oblast	0,30	0,39	0,45	0,30	0,38	0,45		0,28	0,37		0,27	0,37
Khatlon Oblast	0,19	0,17	0,24	0,24	0,19	0,27		0,20	0,21		0,18	0,23
RRS	0,44	0,61	0,74	0,44	0,57	0,73		0,44	0,58		0,43	0,61
Average in the Republic	0,32	0,42	0,51	0,32	0,41	0,52		0,31	0,41		0,29	0,41
	Wheat											
GBAO	0,45	-	0,44	0,45	-	0,19		0,45	0,60		0,45	0,60
Sogd Oblast	0,25	0,39	0,43	0,30	0,38	0,37		0,26	0,30		0,30	0,37
Khatlon Oblast	0,46	0,62	0,54	0,43	0,29	0,33		0,28	0,28		0,32	0,30
RRS	0,35	0,54	0,48	0,36	0,46	0,47		0,33	0,60		0,36	0,46
Average in the Republic	0,32	0,42	0,44	0,33	0,34	0,35		0,28	0,31		0,33	0,36

APPENDIX 4. CHANGES IN AVERAGE CONSUMER PRICES IN TAJIKISTAN IN 2004-2006 (somon / kg)

			I quarter			II quarter		
	2004	2005	2004	2005	2006	2004	2005	2006
	Potatoes							
Dushanbe	0,46	0,77	0,55	0,62	1,25	0,38	0,85	1,23
Sogd Oblast	0,28	0,53	0,32	0,32	1,29	0,24	0,58	1,20
Khatlon Oblast	0,43	0,74	0,58	0,62	1,25	0,34	0,72	1,13
Average in the Republic	0,39	0,68	0,48	0,52	1,26	0,32	0,71	1,19
	Milk							
Dushanbe	1,16	1,44	1,15	1,37	1,80	1,15	1,40	1,77
Sogd Oblast	0,48	0,60	0,45	0,60	0,71	0,47	0,57	0,67
Khatlon Oblast	0,53	0,53	0,50	0,52	0,68	0,50	0,48	0,73
Average in the Republic	0,72	0,86	0,70	0,83	1,06	0,71	0,82	1,06
	Flour of 1st grade							
Dushanbe	1,04	1,04	1,04	1,05	1,00	1,04	1,05	0,98
Sogd Oblast	0,91	0,92	0,90	0,95	0,90	0,90	0,94	0,89
Khatlon Oblast	1,06	1,04	1,09	1,05	0,99	1,05	1,05	0,96
Average in the Republic	1,00	1,00	1,01	1,02	0,96	1,00	1,01	0,94
	Wheat							
Dushanbe	0,64	0,74	0,60	0,65	0,75	0,65	0,75	0,78
Sogd Oblast	0,52	0,56	0,47	0,59	0,48	0,53	0,59	0,49
Khatlon Oblast	0,58	0,66	0,53	0,70	0,65	0,52	0,70	0,65
Average in the Republic	0,58	0,65	0,53	0,65	0,62	0,57	0,68	0,64
	Rice							
Dushanbe	1,55	2,24	1,39	1,67	2,57	1,50	2,03	2,80
Sogd Oblast	1,32	1,91	1,26	1,44	2,23	1,28	1,72	2,44
Khatlon Oblast	1,32	1,94	1,25	1,44	2,23	1,27	1,80	2,54
Average in the Republic	1,39	2,03	1,30	1,52	2,34	1,35	1,85	2,59
	Sugar							
Dushanbe	1,54	1,68	1,44	1,53	2,20	1,42	1,67	2,50
Sogd Oblast	1,57	1,67	1,41	1,54	2,18	1,50	1,69	2,50
Khatlon Oblast	1,60	1,67	1,47	1,53	2,18	1,47	1,67	2,46
Average in the Republic	1,57	1,68	1,44	1,54	2,19	1,46	1,68	2,49

			I quarter			II quarter		
	2004	2005	2004	2005	2006	2004	2005	2006
	Onions							
Dushanbe	0,44	0,49	0,58	0,64	0,72	0,40	0,52	0,63
Sogd Oblast	0,28	0,30	0,28	0,34	0,38	0,33	0,42	0,49
Khatlon Oblast	0,42	0,47	0,56	0,65	0,68	0,38	0,52	0,55
Average in the Republic	0,38	0,42	0,47	0,54	0,60	0,37	0,49	0,56
	Cotton oil							
Dushanbe	2,78	2,81	2,75	2,82	2,80	2,75	2,80	2,75
Sogd Oblast	2,88	2,75	2,79	2,82	2,55	2,88	2,73	2,46
Khatlon Oblast	2,55	2,61	2,52	2,60	2,56	2,49	2,65	2,52
Average in the Republic	2,74	2,71	2,69	2,74	2,64	2,71	2,69	2,58
	Mutton							
Dushanbe	8,35	8,40	8,30	8,25	9,00	8,50	8,25	9,83
Sogd Oblast	8,41	8,60	8,43	8,43	9,42	8,40	8,19	9,80
Khatlon Oblast	7,65	7,63	7,49	7,67	8,13	7,70	7,37	8,53
Average in the Republic	8,13	8,21	8,07	8,12	8,85	8,20	7,93	9,39
	Beef							
Dushanbe	7,00	7,63	7,00	7,00	8,50	7,00	7,27	8,58
Sogd Oblast	6,38	6,61	6,43	6,47	7,30	6,30	6,21	7,47
Khatlon Oblast	6,42	6,59	6,44	6,40	7,02	6,46	6,30	7,23
Average in the Republic	6,60	6,94	6,62	6,62	7,61	6,59	6,59	7,76
	Chicken meet							
Dushanbe	6,24	6,22	6,22	6,22	6,38	6,22	6,22	6,22
Sogd Oblast	5,13	5,89	5,50	5,64	6,22	4,60	5,53	6,78
Khatlon Oblast	6,39	6,33	6,37	6,33	6,59	6,37	6,33	6,33
Average in the Republic	5,92	6,15	6,03	6,06	6,33	5,73	6,03	6,44
	Eggs (10 pieces)							
Dushanbe	2,83	3,13	2,53	3,03	2,80	2,50	2,93	2,87
Sogd Oblast	2,41	2,72	2,23	2,82	2,88	2,00	2,23	2,42
Khatlon Oblast	2,74	3,04	2,66	3,00	2,65	2,50	3,00	2,64
Average in the Republic	2,66	2,97	2,47	2,95	2,87	2,33	2,72	2,64

APPENDIX 5. FOOD BALANCE OF THE REPUBLIC OF TAJIKISTAN for 2002-2005

	Basic foodstuffs (physical quantities)	Bread and bread products in grain, thousand tons				Potatoes fresh, thousand tons				Vegetables and melons fresh, thousand tons				Fruits and berries fresh, thousand tons				Sugar and confectionery, in sugar, thousand tons			
		2002	2003	2004	2005	2002	2003	2004	2005	2002	2003	2004	2005	2002	2003	2004	2005	2002	2003	2004	2005
1.	Stocks at the beginning of the period	221,0	223,2	215,7	121,8	21,0	87,8	234,9	264,7	53,4	15,9	95,0	21,6	46,3	32,3	13,0	3,3	4,0	10,4	47,4	20,6
2.	Food production in the country (+)	544,6	660,2	679,0	805,0	356,7	473,3	527,2	555,1	584,9	721,5	829,8	888,8	228,6	117,3	237,6	237,6	0,3	0,4	1,6	1,9
3.	Food imports (+)	465,4	353,3	276,8	725,5	0,2	0,9	0,6	0,5	0,5	0,3	2,4	39,7	0,9	0,3	4,8	5,6	59,7	95,8	109,1	123,2
	Availability (1-3) (+)	1231,0	1236,7	1171,5	1652,3	377,9	562,0	762,7	820,3	638,8	737,7	927,2	950,1	275,8	149,9	255,4	246,5	64,0	106,6	158,1	145,7
4.	Used for seed (-)	60,8	60,0	107,2	140	90,4	104,0	162,2	84,0	-	-	-	-	-	-	-	-	-	-	-	-
5.	Used as fodder (-)	-	-	-	4,0	-	-	-	-	-	-	-	-	-	-	-	-	-	-	-	-
6.	Losses (-)	11,0	12,0	12,1	5,0	19,0	25,0	30,0	31,0	63,0	78,0	100,0	1,7	14,0	7,0	9,1	1,2	-	-	-	-
7.	Food exports (-)	-	0,3	-	0,3	-	0,3	0,3	0,3	36,5	44,2	90,6	37,5	18,5	55,1	57,9	37,6	-	-	-	0,028
8.	Availability for consumption by the population (-)	891,0	908,7	927	891,4	180,4	197,8	304,5	300,0	523,4	520,5	715,0	717,8	211,0	74,8	172,4	205,2	53,6	59,2	109,6	59,8
9.	Other utilization (-)	45	40,0	3,4	1,2	-	-	1,0	1,2	-	-	-	0,9	-	-	12,7	-	-	-	27,9	4,0
	Consumption (4-9) (-)	1007,8	1021	1049,7	1041,9	289,8	327,1	498,0	416,5	622,9	642,7	905,6	757,9	243,5	136,9	252,1	244,0	53,6	59,2	137,5	63,8
10	Stocks at the end of the period	223,2	215,7	121,8	610,4	88,1	234,9	264,7	403,8	15,9	95,0	21,6	192,2	32,3	13,0	3,3	2,5	10,4	47,4	20,6	81,9

	Basic foodstuffs (physical quantities)	Meat and meat products in carcass weight, thousand tons				Milk and dairy products, in milk, thousand tons				Eggs, million				Vegetable oil, thousand tons				Fish and fish products, tons			
		2002	2003	2004	2005	2002	2003	2004	2005	2002	2003	2004	2005	2002	2003	2004	2005	2002	2003	2004	2005
1.	Stocks at the beginning of the period	1,0	0,2	8,7	0,6	-	1,9	0,6	0,6	-	1,0	3,3	1,0	0,2	0,7	0,9	5,0	-	11,0	11,0	6,7
2.	Food production in the country (+)	39,4	49,1	48,2	53,5	416,8	459,1	489,5	533,0	46,0	57,1	77,7	98,7	31,3	36,0	28,2	22,9	324	234	146,7	178,5
3.	Food imports (+)	1,2	3,6	6,2	12,4	0,6	0,8	1,6	12,4	11,0	43,2	48,0	78,4	15,4	1,2	36,1	56,0	77	200	173	269,0
	Availability (1-3) (+)	41,6	52,9	63,1	66,5	417,4	461,8	491,7	546,0	57,0	101,3	129,0	178,1	46,9	37,9	65,2	83,9	401	445	330,7	454,2
4.	Used for seed (-)	-	-	-	-	-	-	-	-	-	-	-	-	-	-	-	-	-	-	-	-
5.	Used as fodder (-)	-	-	-	-	-	-	-	-	-	-	-	-	-	-	-	-	-	-	-	-
6.	Losses (-)	-	-	-	-	-	-	-	-	-	-	-	-	-	-	-	-	-	-	-	-
7.	Food exports (-)	-	-	-	-	-	-	0,1	-	-	-	-	-	-	-	-	0,2	-	-	-	-
8.	Availability for consumption by the population (-)	41,4	44,2	62,5	63,2	415,5	461,2	489,0	543,5	56,0	98,0	127,2	176,5	46,2	37,0	60,2	69,8	390,0	434	324,0	449,3
9.	Other utilization (-)	-	-	-	-	-	-	2,0	1,6	-	-	0,8	0,4	-	-	-	3,5	-	-	-	-
	Consumption (4-9) (-)	41,4	44,2	62,5	63,2	415,5	461,2	491,1	545,1	56,0	98,0	128,0	176,9	46,2	37,0	60,2	73,5	390,0	434	324,0	449,3
10.	Stocks at the end of the period	0,2	8,7	0,6	3,3	1,9	0,6	0,6	0,9	1,0	3,3	1,0	1,2	0,7	0,9	5,0	10,4	11,0	11,0	6,7	4,9

FOOD BALANCE OF THE REPUBLIC OF TAJIKISTAN for 2005, by quarters

	Basic foodstuffs (physical quantities)	Bread and bread products in grain, thousand tons				Potatoes fresh, thousand tons				Vegetables and melons fresh, thousand tons				Fruits and berries fresh, thousand tons				Sugar and confectionery, in sugar, thousand tons			
		I q.	II q.	III q.	IV q.	I q.	II q.	III q.	IV q.	I q.	II q.	III q.	IV q.	I q.	II q.	III q.	IV q.	I q.	II q.	III q.	IV q.
1.	Stocks at the beginning of the period	121,8	65,4	271,1	638,7	264,7	101,2	137,9	293,3	21,6	2,0	6,0	248,0	3,3	0,8	0,8	53,7	20,6	13,5	37,2	67,8
2.	Food production in the country (+)	-	174	439,0	192,0	-	73,9	236,6	244,6	0,4	89,6	516,5	282,3	-	14,6	115,0	109,4	0,4	0,8	0,7	-
3.	Food imports (+)	100,5	257,7	154,9	222,4	-	0,2	-	0,3	0,2	0,7	-	38,8	1,9	-	0,5	3,2	18,5	33,1	42,9	28,7
	Availability (1-3) (+)	222,3	497,1	865,0	1053,1	264,7	175,3	374,5	538,2	22,2	92,3	522,5	569,1	5,2	15,4	116,3	166,3	39,5	47,4	80,8	96,5
4.	Used for seed (-)	80,0	-	-	60	80,0	-	-	4,0	-	-	-	-	-	-	-	-	-	-	-	-
5.	Used as fodder (-)	-	-	-	-	-	-	-	-	-	-	-	-	-	-	-	-	-	-	-	-
6.	Losses (-)	-	-	-	5,0	7,0	-	1,0	23,0	1,7	-	-	-	0,1	0,1	-	1,0	-	-	-	-
7.	Food exports (-)	0,2	0,1	-	-	0,2	-	-	0,1	2,7	3,0	31,8	-	-	-	37,6	-	-	0,028	-	-
8.	Availability for consumption by the population (-)	76,4	225,6	226,0	363,4	76,0	37,1	79,9	107,0	15,8	83,3	242,7	376,0	4,3	14,5	25,0	161,4	25,0	9,2	12,0	13,6
9.	Other utilization (-)	0,3	0,3	0,3	0,3	0,3	0,3	0,3	0,3	-	-	-	0,9	-	-	-	-	1,0	1,0	1,0	1,0
	Consumption (4-9) (-)	156,9	226,0	226,3	428,7	163,5	37,4	81,2	134,4	20,2	86,3	274,5	376,9	4,4	14,6	62,6	162,4	26,0	10,2	13,0	14,6
10.	Stocks at the end of the period	65,4	271,1	638,7	624,4	101,2	137,9	293,3	403,8	2,0	6,0	248,0	192,2	0,8	0,8	53,7	3,9	13,5	37,2	67,8	81,9

	Basic foodstuffs (physical quantities)	Meat and meat products in carcass weight, thousand tons				Milk and dairy products, in milk, thousand tons				Eggs, million				Vegetable oil, thousand tons				Fish and fish products, tons			
		I q.	II q.	III q.	IV q.	I q.	II q.	III q.	IV q.	I q.	II q.	III q.	IV q.	I q.	II q.	III q.	IV q.	I q.	II q.	III q.	IV q.
1.	Stocks at the beginning of the period	0,6	0,5	0,6	1,5	0,6	0,6	0,6	0,8	1,0	0,5	0,5	0,3	5,0	1,0	1,0	2,4	6,7	0,7	0,5	3,7
2.	Food production in the country (+)	9,6	9,3	14,6	20,0	99,2	119,3	141,6	172,9	22,2	24,3	26,6	25,6	8,0	2,8	5,0	7,1	-	82	42,4	54,1
3.	Food imports (+)	3,3	2,0	2,3	4,8	0,3	2,4	-	9,7	17,8	11,4	15,3	^{33,9}	8,2	12,7	12,6	22,5	81	14	82,8	91,2
	Availability (1-3) (+)	13,5	11,8	17,5	26,3	100,1	122,3	142,2	183,4	41,0	36,2	42,4	59,8	21,2	16,5	18,6	32,0	87,7	96,7	125,7	149,0
4.	Used for seed (-)	-	-	-	-	-	-	-	-	-	-	-	-	-	-	-	-	-	-	-	-
5.	Used as fodder (-)	-	-	-	-	-	-	-	-	-	-	-	-	-	-	-	-	-	-	-	-
6.	Losses (-)	-	-	-	-	-	-	-	-	-	-	-	-	-	-	-	-	-	-	-	-
7.	Food exports (-)	-	-	-	-	-	-	-	-	-	-	-	-	-	-	0,2	-	-	-	-	-
8.	Availability for consumption by the population (-)	13,0	11,2	16,0	23,0	99,0	121,4	141,0	182,1	40,4	35,6	42,0	58,9	16,7	15,5	16,0	21,6	87,0	96,2	122,0	144,1
9.	Other utilization (-)	-	-	-	-	0,5	0,3	0,4	0,4	0,1	0,1	0,1	0,1	0,1	3,5	-	-	-	-	-	-
	Consumption (4-9) (-)	13,0	11,2	16,0	23,0	99,5	121,7	141,4	182,5	40,5	35,7	42,1	58,6	20,2	15,5	16,2	21,6	87,0	96,2	122,0	144,1
10.	Stocks at the end of the period	0,5	0,6	1,5	3,3	0,6	0,6	0,8	0,9	0,5	0,5	0,3	1,2	1,0	1,0	2,4	10,4	0,7	0,5	3,7	4,9

FOOD BALANCE OF THE REPUBLIC OF TAJIKISTAN for 2006, by quarters

	Basic foodstuffs (physical quantities)	Bread and bread products in grain, thousand tons				Potatoes fresh, thousand tons				Vegetables and melons fresh, thousand tons				Fruits and berries fresh, thousand tons				Sugar and confectionery, in sugar, thousand tons			
		I q.	II q.	III q.	IV q.	I q.	II q.	III q.	IV q.	I q.	II q.	III q.	IV q.	I q.	II q.	III q.	IV q.	I q.	II q.	III q.	IV q.
1.	Stocks at the beginning of the period	620,4	517,0			403,8	327,2			192,2	52,5			2,5	-			81,9	90,8		
2.	Food production in the country (+)	-	220,3			-	85,4			0,5	121,1			-	24,7			-	1,2		
3.	Food imports (+)	229,2	14,4			-	7,3			0,1	0,8			5,0	1,1			22,9	18,5		
	Availability (1-3) (+)	849,6	751,7			403,8	419,9			192,8	174,4			7,5	25,8			104,8	110,5		
4.	Used for seed (-)	81,0	-			-	111,7			-	-			-	-			-	-		
5.	Used as fodder (-)	-	-			-	-			-	-			-	-			-	-		
6.	Losses (-)	-	-			24,0	12,0			11,6	-			-	-			-	-		
7.	Food exports (-)	-	-			-	0,005			-	7,7			-	21,9			-	0,003		
8.	Availability for consumption by the population (-)	251,6	193,0			52,6	93,6			128,7	163,4			7,5	3,3			13,6	50,0		
9.	Other utilization (-)	-	0,5			-	-							7,5	-			0,4	-		
	Consumption (4-9) (-)	332,6	193,5			76,6	217,3			140,3	171,1			-	25,2			14,0	50,0		
10.	Stocks at the end of the period	517,0	558,2			327,2	202,6			52,5	3,3			-	0,6			90,8	60,5		

	Basic foodstuffs (physical quantities)	Meat and meat products in carcass weight, thousand tons				Milk and dairy products, in milk, thousand tons				Eggs, million				Vegetable oil, thousand tons				Fish and fish products, tons			
		I q.	II q.	III q.	IV q.	I q.	II q.	III q.	IV q.	I q.	II q.	III q.	IV q.	I q.	II q.	III q.	IV q.	I q.	II q.	III q.	IV q.
1.	Stocks at the beginning of the period	3,3	5,1			0,9	24,0			1,2	28,9			10,4	8,4			4,9	-		
2.	Food production in the country (+)	15,4	24,1			101,5	124,6			24,1	25,1			8,0	2,8			-	0,1		
3.	Food imports (+)	-	10,7			0,6	0,5			36,8	39,0			9,5	12,4			-	68		
	Availability (1-3) (+)	18,7	39,9			103,0	149,1			62,1	93,0			27,9	23,6			4,9	68,1		
4.	Used for seed (-)																				
5.	Used as fodder (-)																				
6.	Losses (-)																				
7.	Food exports (-)	-	0,085			-	0,016			-	-			-	0,003			-	-		
8.	Availability for consumption by the population (-)	13,6	24,5			78,0	112,1			33,2	88,0			19,5	19,8			4,9	68,1		
9.	Other utilization (-)					1,0	1,0														
	Consumption (4-9) (-)	13,6	24,6			79,0	113,1			33,2	88,0			19,5	19,8			4,9	68,1		
10.	Stocks at the end of the period	5,1	15,3			24,0	36,0			28,9	5,0			8,4	3,8			-	-		

**APPENDIX 6. MONEY INCOMES, EXPENDITURES AND CONSUMPTION OF HOUSEHOLDS, IN THE REPUBLIC OF TAJIKISTAN,
BY DECILE POPULATION GROUPS (according to sampling household budget survey)**

	All households				of which:							
					Urban				Rural			
	the poorest 10% of population		the richest 10% of population		the poorest 10% of population		the richest 10% of population		the poorest 10% of population		the richest 10% of population	
	Iq. 2005	Iq.2006	Iq. 2005	Iq.2006	Iq. 2005	Iq.2006	Iq. 2005	Iq.2006	Iq. 2005	Iq.2006	Iq. 2005	Iq.2006
Money incomes , somoni	8,80	14,56	102,14	127,77	18,04	27,97	114,06	151,47	7,95	9,62	93,69	119,01
of which:												
labor incomes	6,02	11,09	7,05	60,09	15,48	23,87	87,38	111,21	5,30	6,38	20,97	44,43
social payments (pension, scholarships, benefits and other payments)	0,85	1,40	2,98	2,41	0,84	2,05	4,00	5,46	0,75	1,16	1,75	1,30
receipts from sales of agricultural products, feeds, livestock, etc.	1,48	0,78	17,45	21,67			0,93	1,06	1,50	29,58	29,57	
Expenditures , somoni	14,95	24,40	92,09	114,21	17,81	34,21	99,62	145,19	15,56	20,79	85,22	102,89
of which:												
consumer expenditures	14,02	22,58	68,50	99,83	17,30	33,44	83,80	126,84	14,58	18,59	58,99	89,96
purchase of foods, including public catering	10,11	15,84	35,44	41,49	15,56	24,69	43,48	60,48	9,99	12,58	30,58	34,55
purchase of nonfoods for personal consumption	2,18	3,22	22,21	40,60	0,59	3,41	26,16	44,58	2,61	3,15	19,65	39,15
services	1,65	3,47	10,27	17,32	1,14	5,34	13,88	21,56	1,90	2,78	8,06	15,77
purchase of alcoholic beverages	0,07	0,06	0,58	0,42	0,01	0,01	0,28	0,22	0,08	0,07	0,70	0,49
Consumption of main foodstuffs, per 1 household member, kg												
Bread and bread products	11,38	10,65	15,57	16,27	7,20	7,81	10,70	12,54	11,67	11,71	18,44	17,59
Potatoes	2,50	1,88	3,95	3,01	1,92	1,55	3,86	3,67	2,61	2,00	3,87	2,77
Vegetables and melons	3,86	3,66	7,66	8,32	2,52	3,44	6,68	5,93	3,98	3,75	8,37	9,16
Fruits and berries, including dry	0,31	0,36	1,26	1,20	0,15	0,36	1,35	1,47	0,32	0,36	1,30	1,11
Meat and meat products	0,32	0,39	1,35	1,11	0,25	0,42	1,47	1,55	0,32	0,37	1,36	0,95
Milk and dairy products	2,03	1,86	6,60	6,24	0,87	1,82	6,09	7,13	2,39	1,88	7,45	5,92
Fish and fish products			0,01	0,02			0,03	0,04				0,01
Eggs (pieces)	2	2	3	3	1	2	4	4	2	2	3	2
Sugar and confectionery	0,65	0,58	1,11	1,12	0,48	0,61	1,28	1,25	0,66	0,58	1,08	1,07
Vegetable oil and other fats	0,68	0,75	1,27	1,31	0,57	0,83	1,34	1,31	0,68	0,72	1,34	1,30

**APPENDIX 7. DISTRIBUTION OF HOUSEHOLDS AND POPULATION IN THEM BY PER CAPITA INCOME
IN THE REPUBLIC OF TAJIKISTAN IN THE FIRST QUARTERS OF 2005-2006** (according to sampling household budget surveys, in %)

	Distribution by money income in the first quarter of 2005			
	Total income		Disposable income	
	Number of households surveyed	Population in them	Number of households surveyed	Population in them
Total number	925	5394	925	5394
Including those with monthly per capita income (somoni):				
below 5,00	11,7	12,8	11,8	13,0
5,01-8,00	8,0	9,0	8,1	9,1
8,01-11,00	8,5	10,2	9,0	10,7
11,01-14,00	11,8	13,0	11,7	12,9
14,01-17,00	9,5	9,7	10,0	10,0
17,01-20,00	8,1	8,0	8,1	8,2
20,01-23,00	8,2	8,3	8,3	8,5
23,01-26,00	6,0	5,8	6,5	6,2
26,01-29,00	5,4	4,9	4,9	4,4
29,01-32,00	3,6	3,3	3,7	3,3
32,01-35,00	3,2	2,7	3,3	2,7
35,01-38,00	2,5	2,2	2,5	2,2
38,01-41,00	2,2	1,8	2,0	1,8
41,01-44,00	2,0	1,5	1,5	0,9
44,01-47,00	1,7	1,2	1,2	0,8
47,01-50,00	0,7	0,6	0,6	0,6
50,01-53,00	0,6	0,6	0,7	0,6
53,01-56,00	0,6	0,5	0,6	0,5
56,01 and more	5,7	3,9	5,5	3,6

	Distribution by money income in the first quarter of 2006			
	Total income		Disposable income	
	Number of households surveyed	Population in them	Number of households surveyed	Population in them
Total number	925	5446	925	5446
Including those with monthly per capita income (somoni):				
below 7,00	13,9	15,5	14,1	15,8
7,01-11,00	7,4	8,1	7,5	8,3
11,01-15,00	6,3	7,3	6,4	7,5
15,01-19,00	7,9	9,5	7,9	9,6
19,01-23,00	7,0	7,9	7,0	7,8
23,01-27,00	8,1	8,4	8,7	9,0
27,01-31,00	7,2	7,6	7,7	8,0
31,01-35,00	6,7	6,4	6,6	6,3
35,01-39,00	5,2	4,9	5,2	4,6
39,01-43,00	4,5	4,3	4,3	4,0
43,01-47,00	3,4	2,9	3,3	2,9
47,01-51,00	2,4	2,2	2,4	2,1
51,01-55,00	2,3	2,0	2,3	2,0
55,01-59,00	2,1	1,8	2,1	1,7
59,01-63,00	2,2	1,7	1,7	1,2
63,01-67,00	1,2	0,9	1,2	0,9
67,01-71,00	0,8	0,5	0,9	0,7
71,01-75,00	1,4	1,1	1,4	1,1
75,01 and more	10,0	7,0	9,3	6,5

APPENDIX 8. STRUCTURE OF AVERAGE MONTHLY EXPENDITURES OF POPULATION IN THE REPUBLIC OF TAJIKISTAN
(according to sampling household budget survey)

	I quarter 2005						I quarter 2006					
	Per 1 household member, somoni / month	of which:		Per 1 household member, in %	of which:		Per 1 household member, somoni / month	of which:		Per 1 household member, in %	of which:	
		Urban area	Rural area		Urban area	Rural area		Urban area	Rural area		Urban area	Rural area
Money expenditures	36,52	45,53	33,16	100,00	100,00	100,00	47,22	63,79	41,22	100,00	100,00	100,00
of which:												
Consumer expenditures	31,41	41,27	27,73	86,0	90,6	83,6	43,17	58,61	37,57	91,4	91,9	91,1
including:												
on foods	20,65	28,00	17,91	65,7	67,8	64,6	25,88	34,91	22,60	59,9	59,6	60,2
on nonfoods	6,85	8,00	6,43	21,8	19,4	23,2	11,01	14,31	9,82	25,5	24,4	26,1
including:												
clothes, footwear, fabrics	2,98	4,17	2,54	43,5	52,1	39,5	3,73	5,61	3,06	33,9	39,2	31,2
furniture and cultural and household appliances	0,65	0,65	0,64	9,5	8,1	10,0	1,83	3,97	1,06	16,6	27,7	10,8
medicines	0,53	0,61	0,51	7,7	7,6	7,9	0,86	1,29	0,71	7,8	9,0	7,2
building materials	0,80	0,05	1,07	11,7	0,6	16,6	1,11	0,18	1,14	10,1	1,3	11,6
fuel	0,21	0,10	0,25	3,1	1,3	3,9	0,37	0,12	0,46	3,4	0,8	4,7
tobacco goods, makhorka	0,18	0,18	0,18	2,6	2,3	2,8	0,22	0,22	0,22	2,0	1,5	2,2
alcoholic beverages	0,13	0,06	0,15	0,4	0,1	0,5	0,14	0,05	0,17	0,3	0,1	0,5
services	3,78	5,21	3,24	12,0	12,6	11,7	6,14	9,34	4,98	14,2	15,9	13,3
of which:												

	I quarter 2005						I quarter 2006					
	Per 1 house- hold member, sometri / month	of which:		Per 1 house- hold member, in %	of which:		Per 1 house- hold member, sometri / month	of which:		Per 1 house- hold member, in %	of which:	
		Urban area	Rural area		Urban area	Rural area		Urban area	Rural area		Urban area	Rural area
housing and communal services	1,25	1,86	1,02	33,1	35,7	31,5	1,48	2,88	0,97	24,1	30,8	19,5
including payments for :												
dwelling space	0,03	0,07	0,01	2,4	3,8	1,0	0,06	0,17	0,02	4,1	5,9	2,1
communal services	1,20	1,79	1,01	96,0	96,2	99,0	1,42	2,71	0,95	95,9	94,1	97,9
o/w electric energy	0,59	0,57	0,59	49,2	31,8	58,4	0,70	1,14	0,54	49,3	42,1	56,8
personal services	0,26	0,24	0,27	6,9	4,6	8,3	0,70	0,62	0,73	11,4	6,6	14,7
o/w repair and individual manufacture of clothes and footwear	0,04	0,07	0,02	15,4	29,2	7,4	0,08	0,15	0,05	11,4	24,2	6,8
cultural and educational services	0,05	0,01	0,01	1,3	0,2	0,4	0,12	0,12	0,11	2,0	1,3	2,2
payments for education	0,21	0,48	0,14	5,6	9,2	4,3	0,26	0,69	0,10	4,2	7,4	2,0
payments for medical services	0,14	0,35	0,06	3,7	6,7	1,9	0,24	0,58	0,11	3,9	6,2	2,2
payments for treatment in sanatoria and health resorts, including rest	0,00	0,00	0,00	0,0	0,0	0,0	0,00	0,00	0,00	0,0	0,0	0,0
transport services	1,69	1,98	1,58	44,7	38,0	48,8	2,99	3,56	2,77	48,7	38,1	55,6
communication services	0,05	0,10	0,03	1,3	1,9	0,9	0,21	0,70	0,04	3,4	7,5	0,8
legal services	0,03	0,04	0,03	0,8	0,8	0,9	0,09		0,12	1,5	0,0	2,4
Taxes, due, and other payments	0,89	2,57	0,22	2,4	5,6	0,7	0,95	2,96	0,22	2,0	4,6	0,5
Other expenditures	4,22	1,69	5,21	11,6	3,7	15,7	3,10	2,22	3,43	6,6	3,5	8,3

Continued

DISTRIBUTION OF HOUSEHOLDS AND POPULATION IN THEM BY PER CAPITA CONSUMER EXPENDITURES in the first quarter of 2005
(according to sampling household budget survey), in %

	Number of households surveyed	Population in them	Households consisting of:					Households having children below 16	of which households having			
			1 person	2 persons	3 person	4 persons	5 and more persons		1 child	2 children	3 children	4 and more children
Total number	925	5450	24	47	66	135	653	772	177	208	188	199

of which those with monthly per capita expenditures (somon) :

below 10,00	4,0	5,1			1,5		5,5	4,8	3,4	3,4	4,3	8,0
10,01-15,00	8,0	9,8			1,5	5,2	10,1	9,1	5,7	8,2	8,0	14,1
15,01-20,00	9,7	11,8		2,2	3,0	6,0	12,1	10,6	8,5	9,1	9,6	15,1
20,01-25,00	17,2	19,4	20,8	2,2	12,1	8,2	20,7	18,0	6,8	13,5	21,3	29,7
25,01-30,00	13,4	13,4	8,3	2,2	13,6	14,2	14,2	14,4	13,6	16,8	14,9	12,1
30,01-35,00	12,5	12,3		13,3	10,6	11,9	13,3	13,1	13,6	13,9	13,8	11,1
35,01-40,00	8,9	8,6	4,2	8,9	6,1	13,4	8,4	9,3	14,7	10,1	9,0	4,0
40,01-45,00	6,4	5,4	8,3	13,3	16,7	5,2	4,9	6,0	10,2	5,8	6,9	1,5
45,01-50,00	4,2	3,2	4,2	11,1	6,1	9,0	2,5	3,8	4,5	6,3	3,2	1,0
50,01-55,00	2,8	2,0	4,2	8,9	7,6	4,5	1,5	2,1	3,4	3,4	1,6	
55,01-60,00	2,5	1,9	8,3	8,9	3,0	3,0	1,5	1,9	3,4	1,9	0,5	2,0
60,01-65,00	2,8	2,2	4,2	4,4	3,0	7,5	1,5	1,8	2,8	1,9	1,6	1,0
65,01-70,00	2,1	1,5	8,3	8,9	1,5	3,0	1,2	1,4	2,3	1,4	2,1	
70,01-75,00	1,1	0,8	12,5		1,5	0,8	0,8	0,7	0,6	1,0	1,1	
75,01-80,00	0,7	0,4		6,7		0,8	0,3	0,4	0,6		0,5	0,5
80,01-85,00	0,2	0,2			1,5		0,2	0,1			0,5	
85,01-90,00	0,4	0,3			3,0	1,5		0,4	1,1	0,5		
90,01-95,00	0,1	0,0	4,2									
95,01 and more	3,1	2,1	12,5	8,9	7,6	6,0	1,2	2,2	5,1	2,9	1,1	

Continued

DISTRIBUTION OF HOUSEHOLDS AND POPULATION IN THEM BY PER CAPITA CONSUMER EXPENDITURES in the first quarter of 2006
(according to sampling household budget survey), in %

	Number of households surveyed	Population in them	Households consisting of:					Households having children below 16	of which households having			
			1 person	2 persons	3 person	4 persons	5 and more persons		1 child	2 children	3 children	4 and more children
Total number	925	5394	24	43	71	134	653	774	172	218	194	190

of which those with monthly per capita expenditures (somon) :

below 15,00	5,30	6,75				1,49	7,20	6,33	4,07	3,67	7,21	10,53
15,01-20,00	7,89	9,02			2,82	5,22	9,80	8,79	8,72	8,26	4,64	13,68
20,01-25,00	8,86	10,25	16,67	2,32	2,82	5,22	10,41	9,56	8,14	6,88	8,25	15,26
25,01-30,00	10,49	13,12	12,50	4,65		2,99	13,48	11,76	4,07	6,88	19,07	16,84
30,01-35,00	9,72	11,13		2,32	2,82	5,97	12,10	11,11	9,88	9,63	11,34	13,68
35,01-40,00	10,59	10,93		6,98	8,45	8,21	11,94	11,24	10,47	8,72	13,40	12,63
40,01-45,00	8,54	8,36	8,33	2,33	4,23	11,94	8,73	9,17	9,88	10,09	10,31	6,32
45,01-50,00	5,95	5,51		9,30	8,45	4,48	5,97	5,94	9,30	6,42	4,64	3,68
50,01-55,00	5,95	5,22		2,33	9,86	9,70	5,21	5,68	4,65	9,17	6,19	2,10
55,01-60,00	3,79	3,36		2,33	4,22	5,97	3,52	3,62	3,49	5,50	4,12	1,05
60,01-65,00	3,35	2,70	4,17	6,98	4,22	6,72	2,30	2,45	2,33	3,67	3,61	
65,01-70,00	2,38	2,02	4,17		7,04	4,48	1,53	2,07	2,91	3,21	1,55	0,53
70,01-75,00	2,49	1,71	8,33	16,28	1,41	2,24	1,53	1,55	2,33	2,76	1,05	
75,01-80,00	1,73	1,21	4,17	2,33	2,82	5,97	0,61	1,16	4,07	0,92		
80,01-85,00	1,52	1,12	4,17	2,32	4,22	2,24	0,92	1,42	2,33	1,83	0,51	1,05
85,01-90,00	1,29	1,01		2,32	5,63	1,49	0,77	1,29	1,16	1,83	0,51	1,59
90,01-95,00	1,08	0,70	8,33	4,65	1,41	0,75	0,61	0,65	1,74	0,92		
95,01-100,00	1,73	0,99	12,50	11,63	2,82	1,49	0,61	0,91	1,74	0,92	0,51	0,53
100,01 and more	7,35	4,89	16,66	20,93	26,76	13,43	2,76	5,30	8,72	8,72	3,09	0,53

APPENDIX 9. PER CAPITA CONSUMPTION OF FOOD IN THE REPUBLIC OF TAJIKISTAN
(according to sampling household budget surveys)

(per month, kg)

	<i>I quarter of 2005</i>			<i>I quarter of 2006</i>		
	Total	of which:		Total	of which:	
		Urban area	Rural area		Urban area	Rural area
Bread products	12,62	10,24	13,50	12,68	10,10	13,62
Potatoes	2,78	2,75	2,79	2,38	2,21	2,44
Vegetables and melons	5,13	4,84	5,24	5,31	4,45	5,63
Fruits and berries, including dry	1,59	0,67	1,93	1,59	0,97	1,81
Sugar and confectionary	0,84	0,91	0,81	0,84	0,89	0,82
Meat and meat products	0,61	0,66	0,60	0,64	0,74	0,61
Fish products	-	0,01	-	0,01	0,01	0,01
Milk and dairy products	3,72	3,00	3,98	4,09	3,26	4,40
Eggs (pieces)	2	2	2	2	2	2
Vegetable oil and margarine	0,95	0,99	0,94	1,03	0,97	1,04

**FOOD SECURITY AND POVERTY
INFORMATION BULLETIN
OF THE REPUBLIC OF TAJIKISTAN**

/ Edited by Shabozov M.Sh. - Chairman
of the State Committee on Statistics
of the Republic of Tajikistan
734025 Tajikistan, Dushanbe, Bokhtar Street, 17 /

Editorial board:

Shabozov M.Sh. - Chairman of Editorial Board

Mukhammadiyeva B.Z., Asoev A.A., Ashurov I.S., Baimatov K.F., Gukasova T.P.,
Abdulloev M.A., Jdanova L.V., Ziaeva M.A., Kislitsina E.A., Turaev B.T.

Responsible for:

- sections of the Bulletin

Vital and Employment Statistics	Kislitsina E.A.	27-80-88
Social Statistics	Budnikova E.V.	27-94-88
Prices, Household Budgets and Poverty Statistics	Turaev B.T.	27-56-28
Finances	Pulatova N.T.	27-98-71
Gross Domestic Product	Ziaeva M.A.	27-98-71
Trade, External Activity	Jdanova L.V.	23-32-48
Agriculture	Abdulloev M.A.	27-81-14
Nature and Environment Statistics	Norov K.	27-82-66

-preparation of main document, systematization of parts, and design:

Economic Analysis and International
Relations Department

Gukasova T.P.

Tel. 21-23-87

e-mail: stat@tojikiston.com

-publication:

Chief of Central Computer Center
of the State Committee on Statistics
of the Republic of Tajikistan

Baimatov K.F.

Tel: 27-96-09